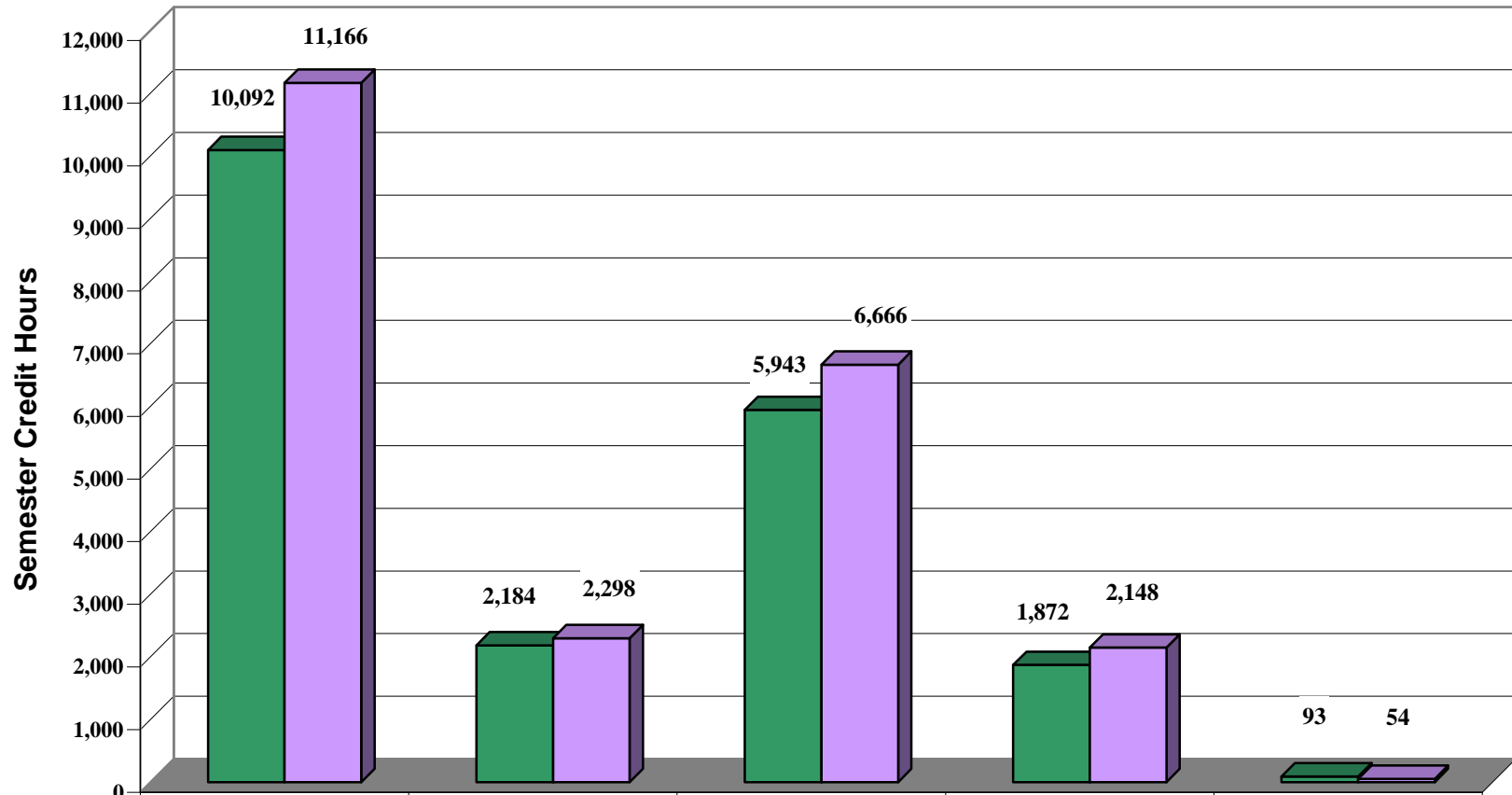


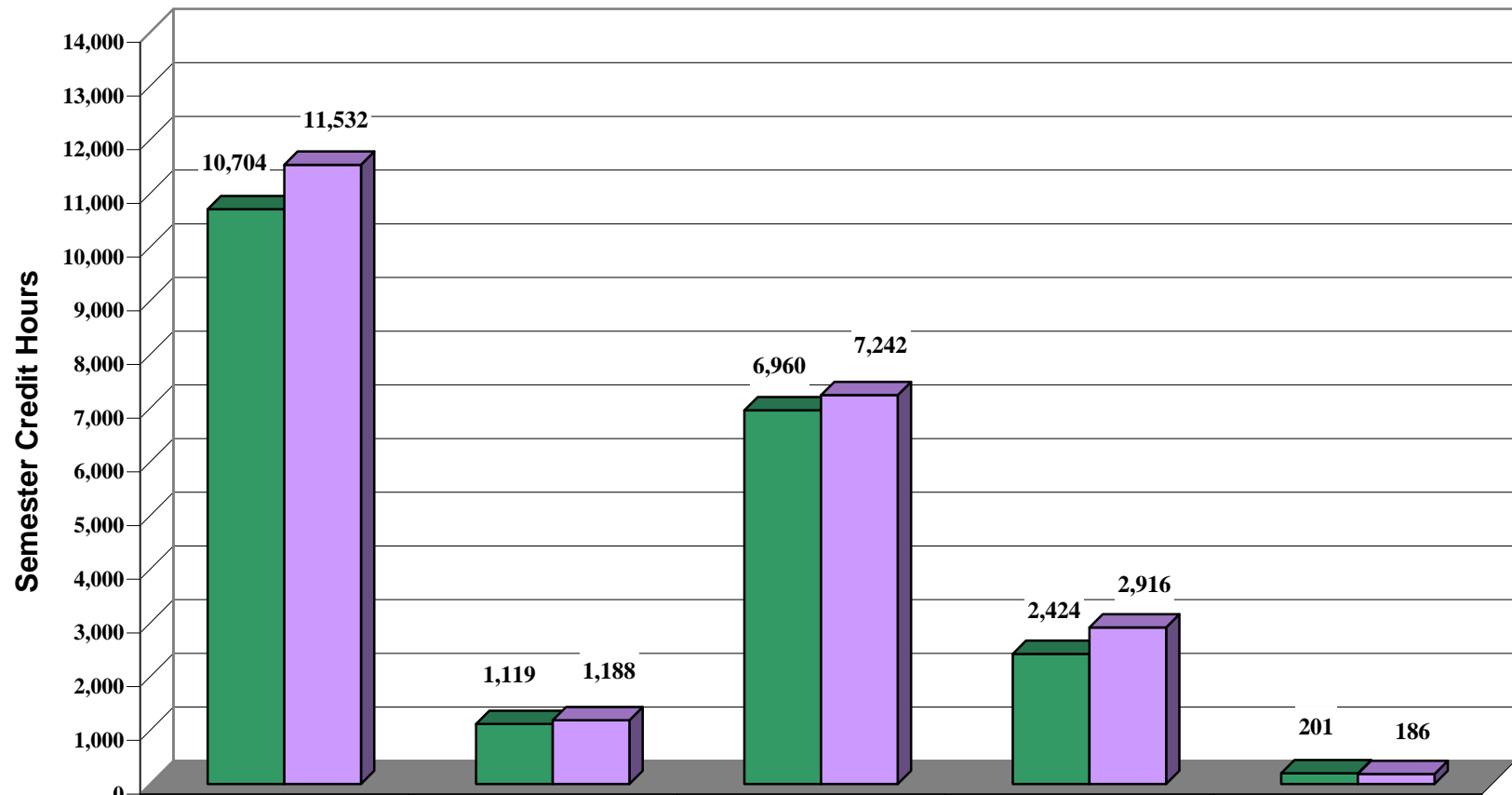
A.R. Sanchez Jr. School of Business

Semester Credit Hours - Dept: IBFS



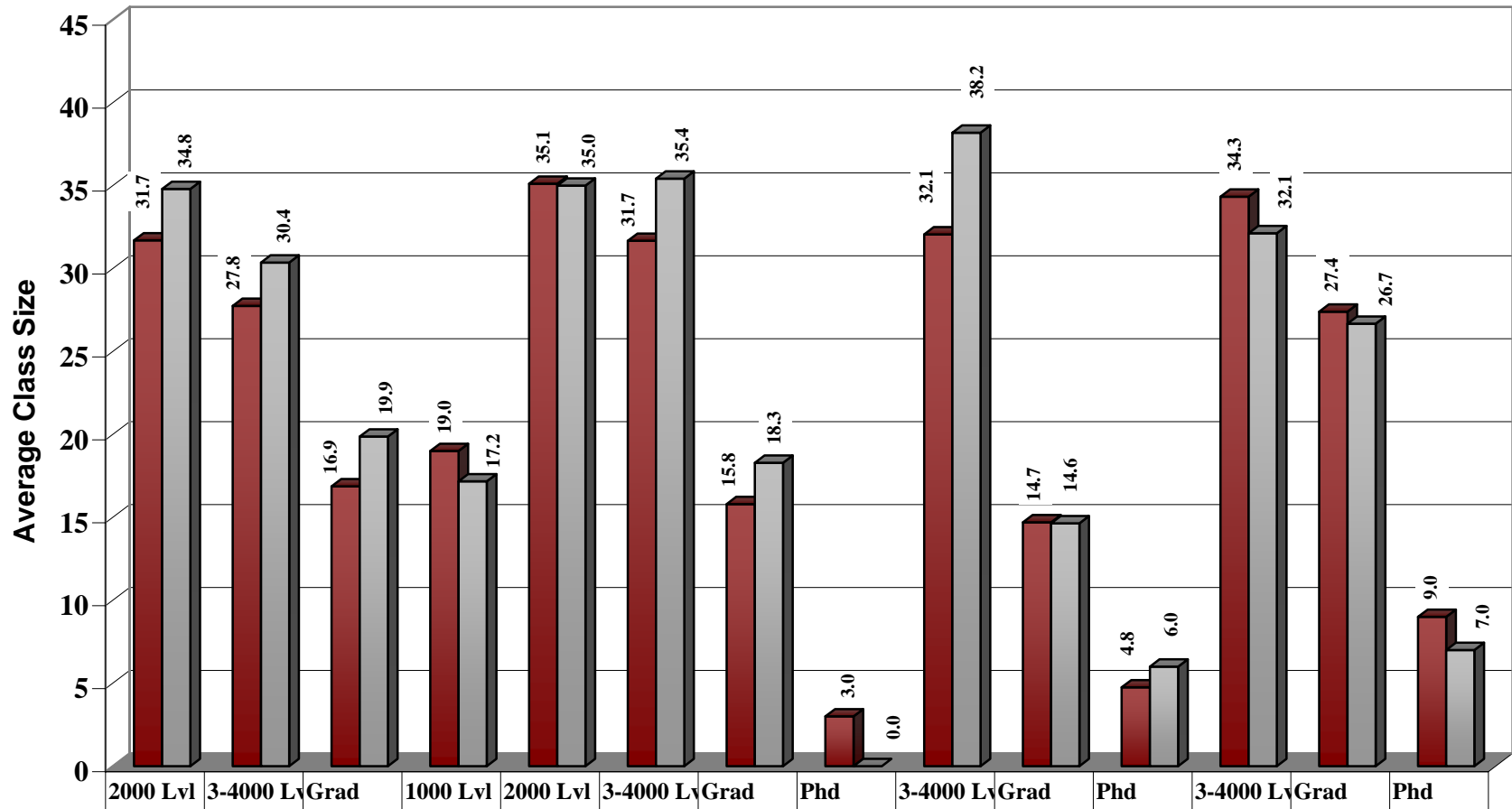
	IBFS Sch	Lower Div Courses	Upper Div Courses	Graduate Courses	Doctoral Courses
■ FY 2007	10,092	2,184	5,943	1,872	93
■ FY 2008	11,166	2,298	6,666	2,148	54

Semester Credit Hours - Dept: IBTS



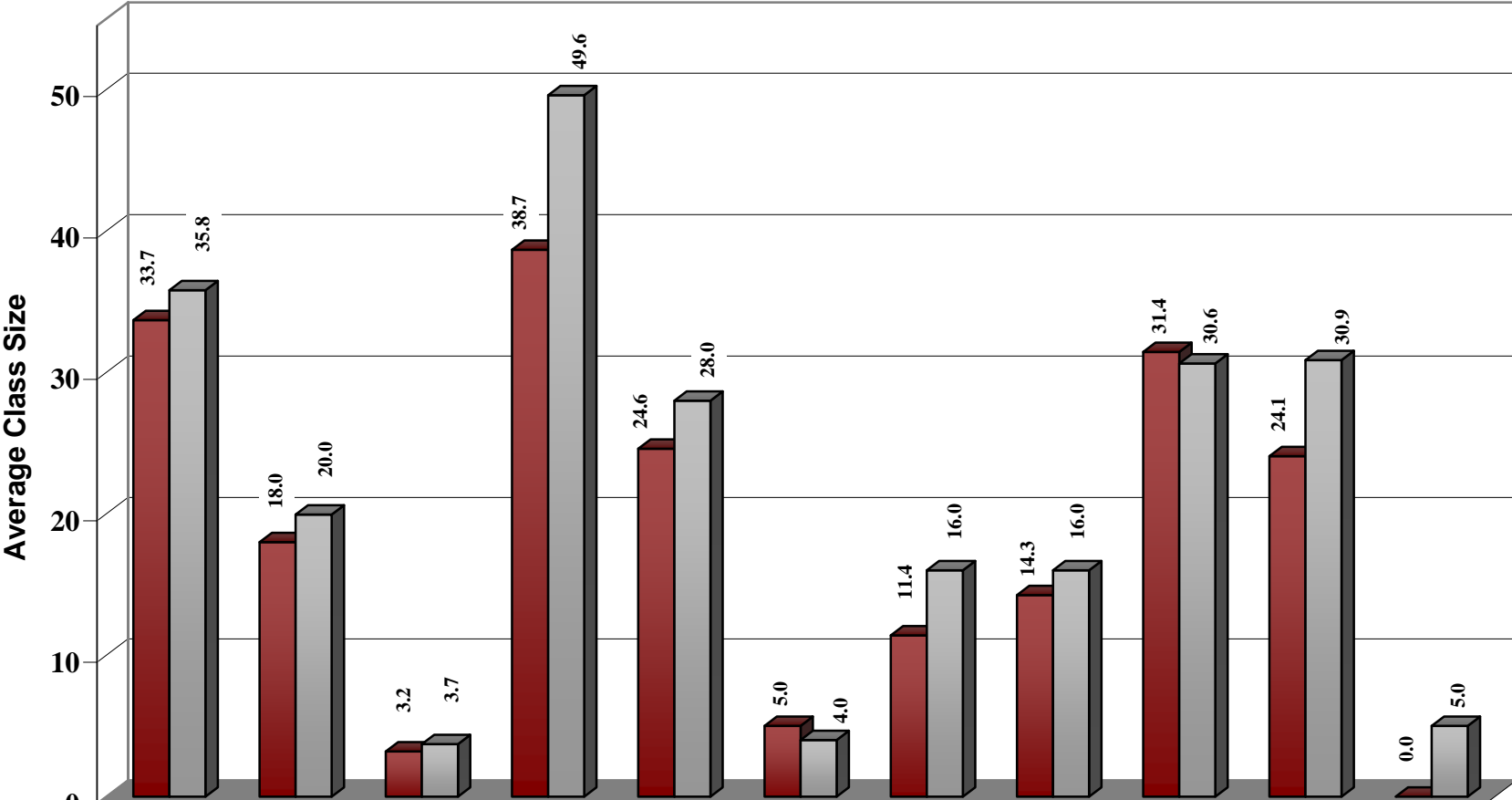
	IBFS Sch	Lower Div Courses	Upper Div Courses	Graduate Courses	Doctoral Courses
FY 2007	10,704	1,119	6,960	2,424	201
FY 2008	11,532	1,188	7,242	2,916	186

Average Class Size - Dept: IBFS



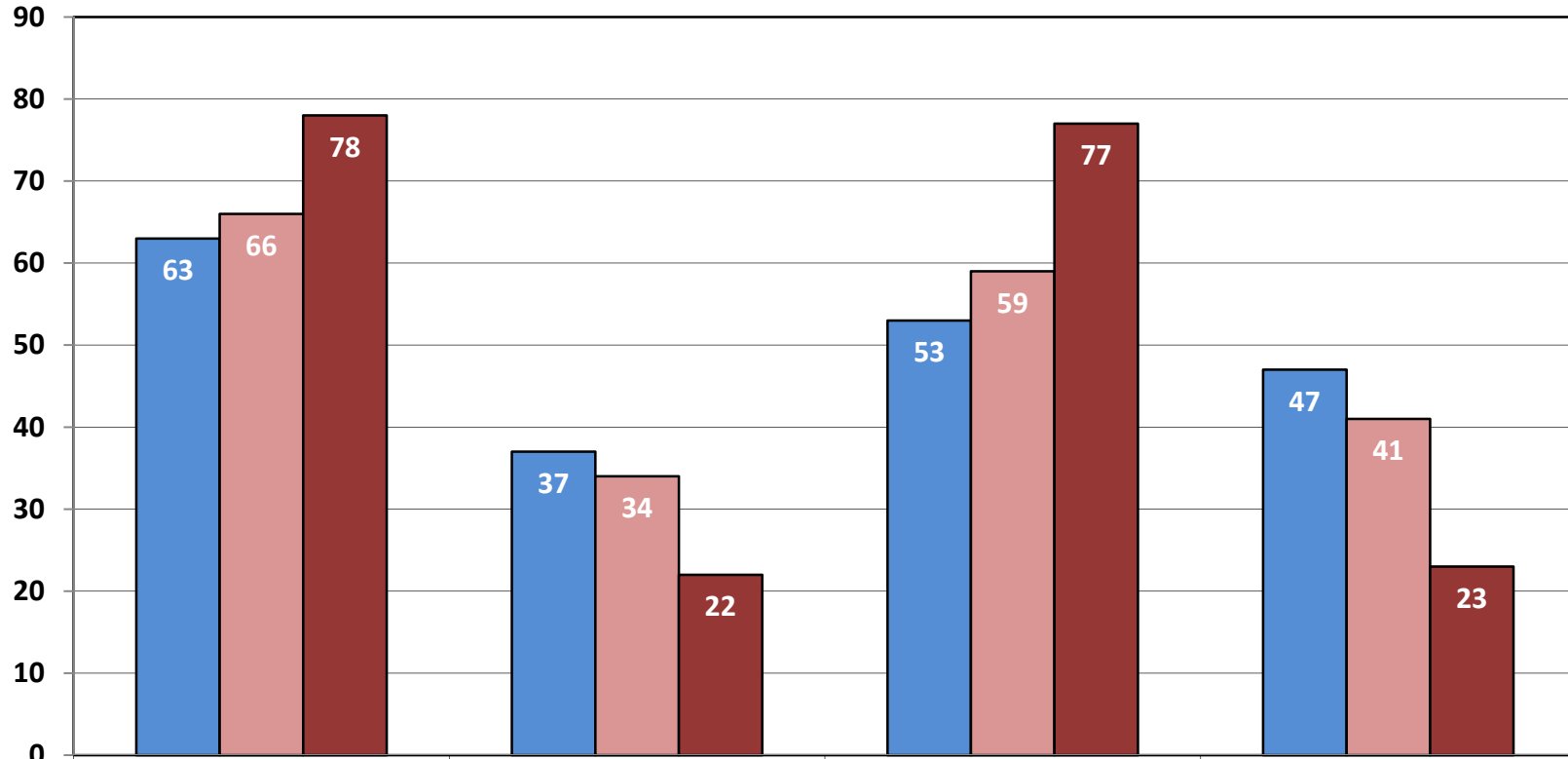
	2000 Lvl	3-4000 Lvl	Grad	1000 Lvl	2000 Lvl	3-4000 Lvl	Grad	Phd	3-4000 Lvl	Grad	Phd	3-4000 Lvl	Grad	Phd
	ACC			ECO				FIN			MKT			
FY 2007	31.7	27.8	16.9	19.0	35.1	31.7	15.8	3.0	32.1	14.7	4.8	34.3	27.4	9.0
FY 2008	34.8	30.4	19.9	17.2	35.0	35.4	18.3	0.0	38.2	14.6	6.0	32.1	26.7	7.0

Average Class Size - Dept: IBTS



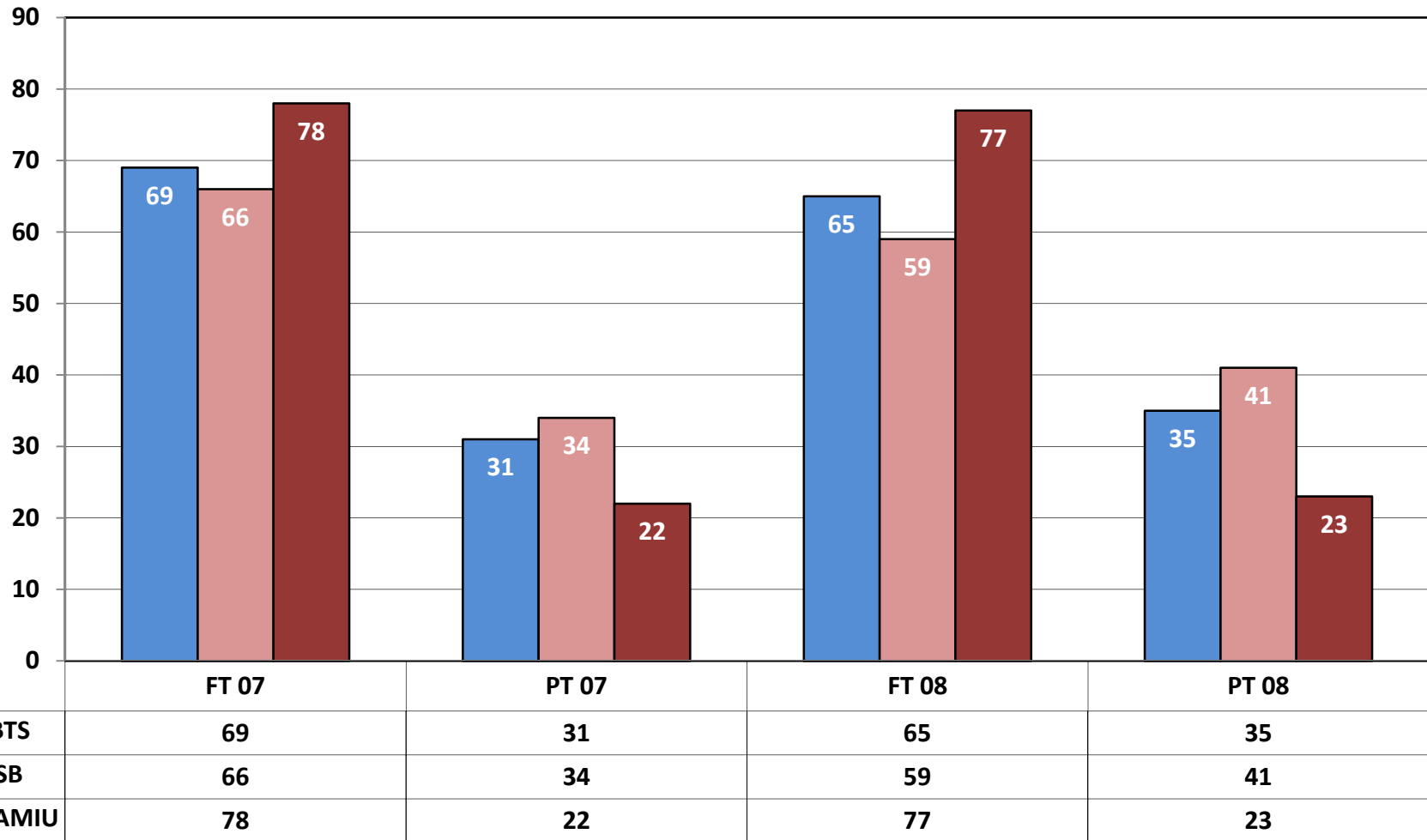
	3-4000 Lvl	Grad	Phd	3-4000 Lvl	Grad	Phd	1000 Lvl	2000 Lvl	3-4000 Lvl	Grad	Phd
FY 2007	33.7	18.0	3.2	38.7	24.6	5.0	11.4	14.3	31.4	24.1	0.0
FY 2008	35.8	20.0	3.7	49.6	28.0	4.0	16.0	16.0	30.6	30.9	5.0

FY 07-08 Percent of SCH by Full/Part Time Faculty for IBFS



	FT 07	PT 07	FT 08	PT 08
IBFS	63	37	53	47
SSB	66	34	59	41
TAMIU	78	22	77	23

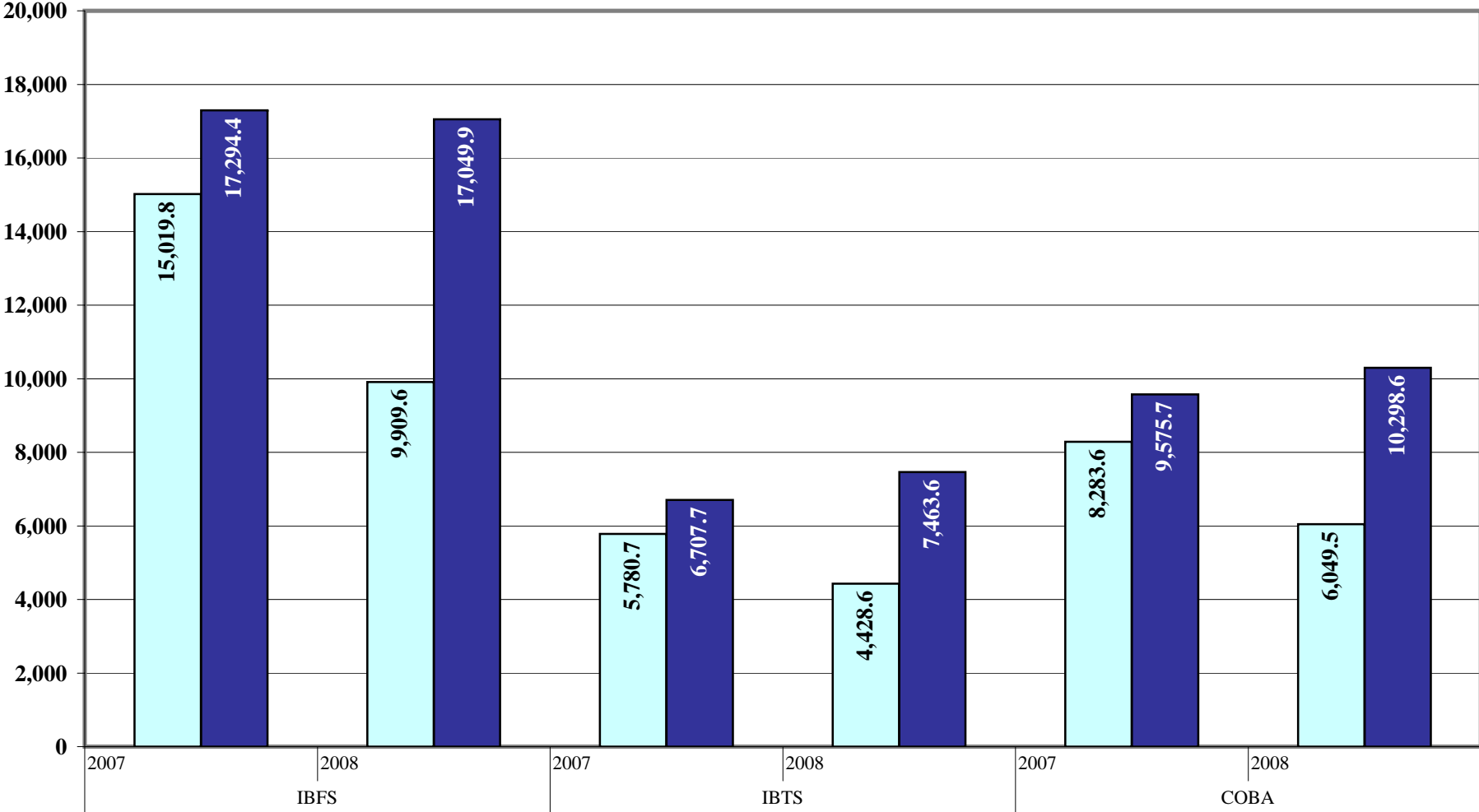
FY 07-08 Percent of SCH by Full/Part Time Faculty for IBTS



Faculty Salary and SCH Generated
WebFocus: IR_COST-REIMBURSEMENT-FY as of 01/14/09

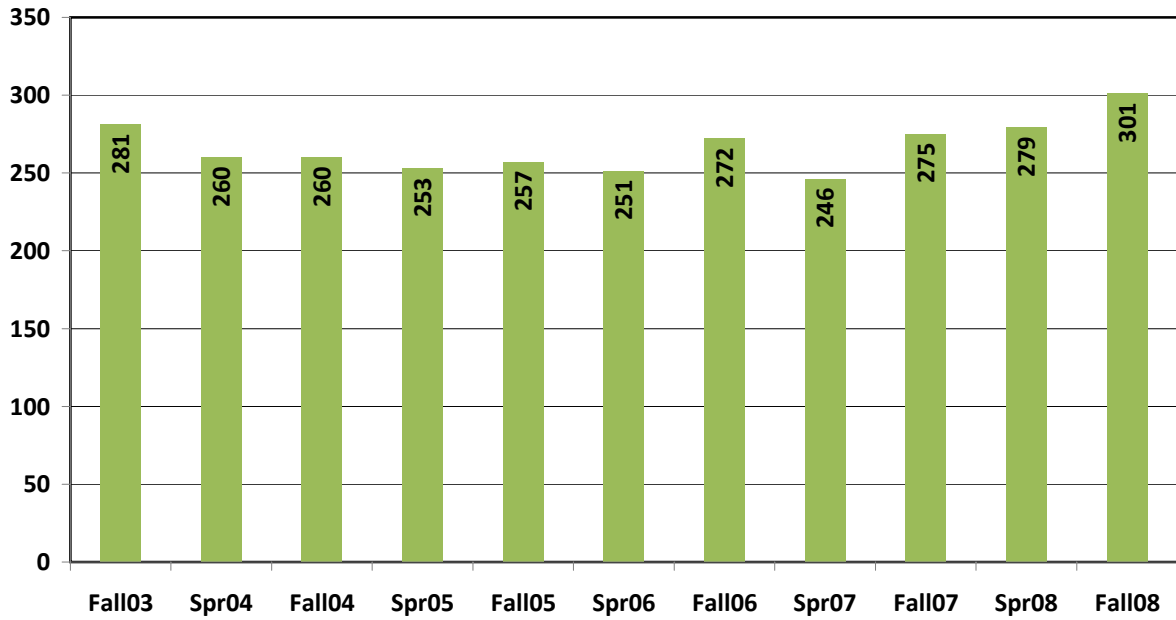
		FY 2007						FY 2008					
Col	Dept	Degrees	Salary(Cost)	Cost per Degr	\$ Gen	Reimburs per Degr	Dif from Salary	Degrees	Salary(Cost)	Cost per Degr	\$ Gen	Reimburs per Degr	Dif from Salary
AS	BACJ	143	1,124,133.32	7,861.07	1,439,155.59	10,064.03	315,022.27	125	944,479.25	7,555.83	1,508,359.28	12,066.87	563,880.03
	BC	35	821,699.75	23,477.14	1,031,841.12	29,481.17	210,141.37	33	900,974.50	27,302.26	1,197,116.59	36,276.26	296,142.09
	FPA	17	736,064.00	43,297.88	553,518.35	32,559.90	-182,545.65	26	648,950.48	24,959.63	548,452.98	21,094.35	-100,497.50
	LL	39	1,197,861.70	30,714.40	1,077,309.45	27,623.32	-120,552.25	47	1,063,950.36	22,637.24	1,219,009.32	25,936.37	155,058.96
	MPHS	17	782,939.00	46,055.24	613,580.26	36,092.96	-169,358.74	24	734,340.75	30,597.53	687,623.12	28,650.96	-46,717.63
	SSC	49	896,376.75	18,293.40	1,133,668.44	23,136.09	237,291.69	51	820,250.45	16,083.34	1,146,536.40	22,481.11	326,285.95
*TOTAL AS		300.00	5,559,074.52	18,530.25	5,849,073.21	19,496.91	289,998.69	306.00	5,112,945.79	16,708.97	6,307,097.69	20,611.43	1,194,151.90
BA	IBFS	81	1,216,600.92	15,019.76	1,400,843.13	17,294.36	184,242.21	97	961,235.00	9,909.64	1,653,843.06	17,049.93	692,608.06
	IBTS	218	1,260,185.25	5,780.67	1,462,287.96	6,707.74	202,102.71	231	1,022,997.00	4,428.56	1,724,085.24	7,463.57	701,088.24
	*TOTAL BA		299.00	2,476,786.17	8,283.57	2,863,131.09	9,575.69	386,344.92	328.00	1,984,232.00	6,049.49	3,377,928.30	10,298.56
ED	CI	192	467,605.00	2,435.44	748,348.25	3,897.65	280,743.25	191	530,546.25	2,777.73	806,283.30	4,221.38	275,737.05
	PPRO	94	781,791.00	8,316.93	899,515.93	9,569.32	117,724.93	95	698,571.73	7,353.39	989,602.32	10,416.87	291,030.59
	TCHP	30	814,349.00	27,144.97	1,176,536.75	39,217.89	362,187.75	37	650,590.69	17,583.53	1,175,294.22	31,764.71	524,703.53
	*TOTAL ED		316.00	2,063,745.00	6,530.84	2,824,400.93	8,937.98	760,655.93	323.00	1,879,708.67	5,819.53	2,971,179.84	9,198.70
GU	DEVS		201,539.00		143,924.76		-57,614.24		284,887.04		150,855.12		-134,031.92
*TOTAL GU			201,539.00		143,924.76		-57,614.24		284,887.04		150,855.12		-134,031.92
NH	NURS	57	674,362.50	11,830.92	1,062,330.89	18,637.38	387,968.39	64	607,214.81	9,487.73	748,250.60	11,691.42	141,035.79
*TOTAL NH		57.00	674,362.50	11,830.92	1,062,330.89	18,637.38	387,968.39	64.00	607,214.81	9,487.73	748,250.60	11,691.42	141,035.79
TOTAL			10,975,507.19		12,742,860.88		1,767,353.69		9,868,988.31		13,555,311.55		3,686,323.24

Cost vs Reimbursement per Degree - COBA

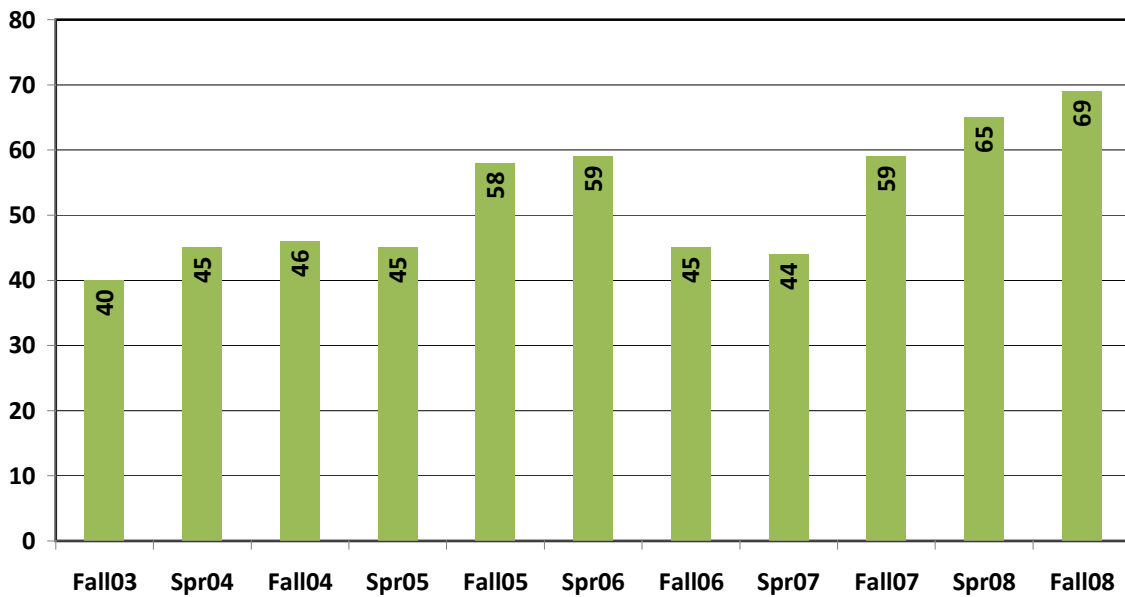


Series1	15019.8	9909.6	5780.7	4428.6	8283.6	6049.5
Series2	17294.4	17049.9	6707.7	7463.6	9575.7	10298.6

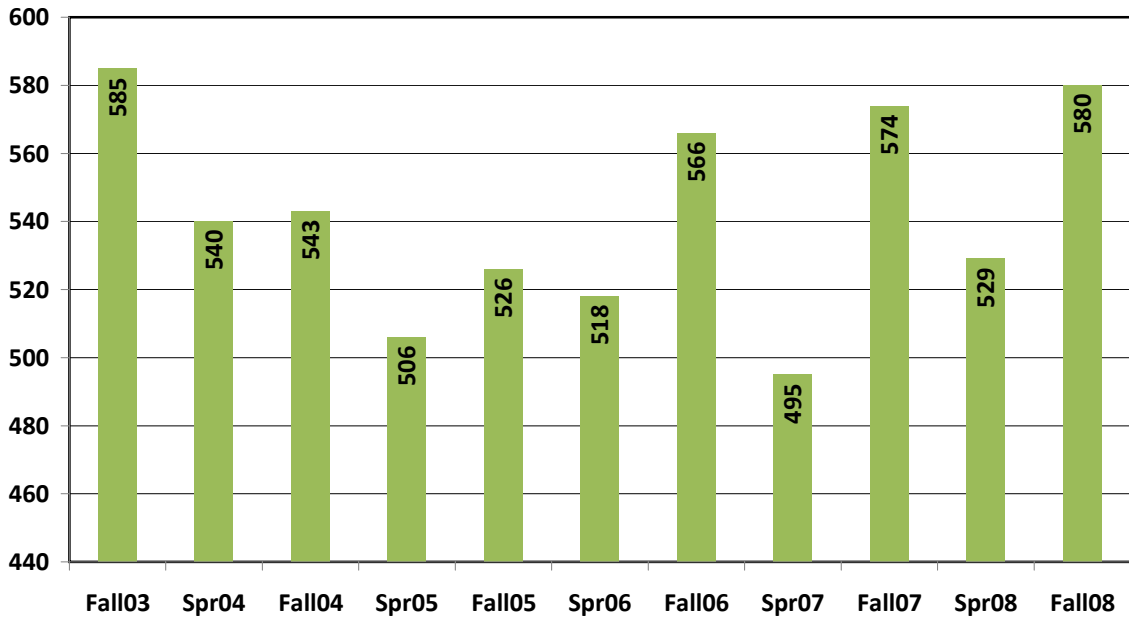
Undergraduate Majors for IBFS



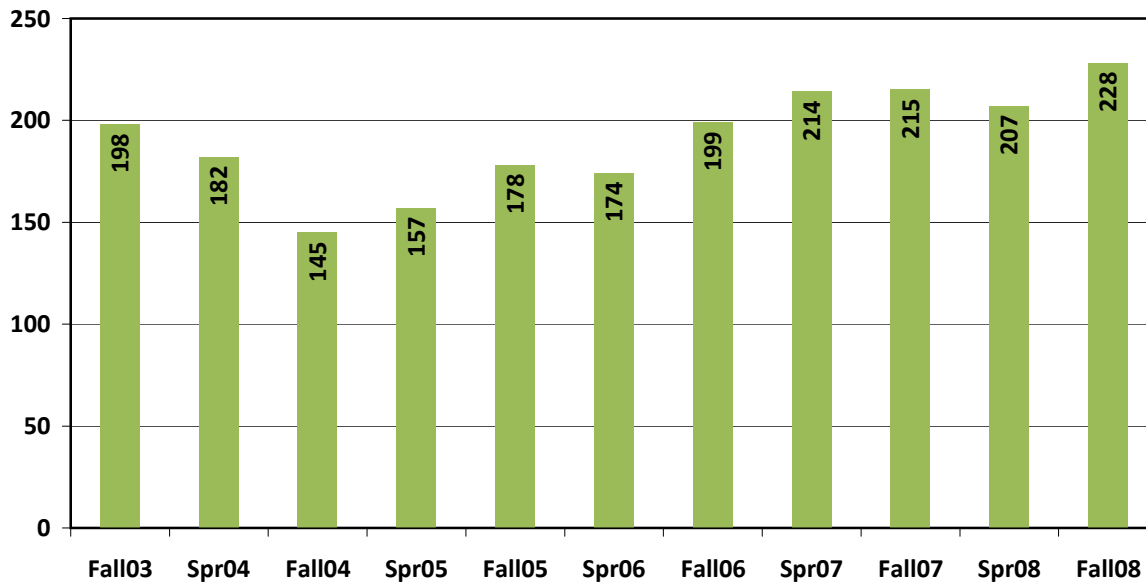
Graduate Majors for IBFS



Undergraduate Majors for IBTS



Graduate Majors for IBTS



ENROLLMENT BY MAJOR

FOC: IR_ENROLLMENT_BY_MAJOR

UNDERGRADUATE

ARTS&SCIENCES	DEPT	F03	SP04	F04	SP05	F05	SP06	F06	SP07	F07	SP08	F08	SP09
PSYCHOLOGY	BACJ	188	185	188	188	203	201	207	190	210	220	243	
SOCIOLOGY	BACJ	23	30	25	27	28	26	29	29	27	30	33	
CRIMINAL JUSTICE	BACJ	245	270	279	286	268	289	325	295	303	293	326	
SOCIAL WORK	BACJ	34	38	46	39	37	42	37	37	28	28	21	
		490	523	538	540	536	558	598	551	568	571	623	
BIOLOGY	BC	193	174	200	196	194	188	194	170	203	192	257	
CHEMISTRY	BC	17	22	28	20	27	20	22	22	20	18	30	
ENVIRONMENTAL SCIENCE	BC	3	3	4	3		2	5	8	7	8	9	
SCIENCE	BC	11	9	11	11	12	17	11	8	7	7	6	
		224	208	243	230	233	227	232	208	237	225	302	
ART	FPA		9	25	37	40	50	57	57	60	58	58	
MUSIC	FPA	51	55	58	56	59	55	67	62	61	57	66	
		51	64	83	93	99	105	124	119	121	115	124	
COMMUNICATION	LL	55	49	53	55	58	63	76	74	85	81	89	
ENGLISH	LL	60	61	47	44	45	39	55	77	70	75	90	
ENGLISH LA&READING	LL	23	36	38	44	43	41	25	13	19	18	12	
ENGLISH SOCIAL STUDIES	LL		2	2	3	3		1	1	1	2	2	
SPANISH	LL	38	40	31	37	40	44	41	44	41	37	39	
		176	188	171	183	189	187	198	209	216	213	232	
MATHEMATICS	MPHS	83	81	94	88	101	87	92	91	106	94	89	
PHYSICAL SCIENCE	MPHS	31	25	39	33	52	46	58	56	63	48	59	
SYSTEMS ENGINEERING	MPHS											5	
		114	106	133	121	153	133	150	147	169	142	153	
COMPOSITE (BAAS)	SSC	62	61	63	50	46	37	40	37	35	26	37	
HISTORY	SSC	47	43	42	37	37	36	56	58	60	65	56	
LATIN AMERICAN STUDIES	SSC	2	3	1	2	2	1	1	2	2	1	1	
POLITICAL SCIENCE	SSC	62	67	65	63	59	64	82	75	75	69	76	
SOCIAL STUDIES	SSC	5	11	14	16	17	24	22	24	36	31	32	
URBAN STUDIES	SSC	10	9	10	10	7	7	6	4	6	7	6	
		188	194	195	178	168	169	207	200	214	199	208	
UNDECIDED		198	190	227	199	211	179	423	375	514	497	1001	
		198	190	227	199	211	179	423	375	514	497	1001	
SUBTOTAL		1441	1473	1590	1544	1589	1558	1932	1809	2039	1962	2643	

BUSINESS		F03	SP04	F04	SP05	F05	SP06	F06	SP07	F07	SP08	F08	SP09
ACCOUNTING	IBFS	215	190	184	178	175	177	191	174	185	188	202	
FINANCE	IBFS	48	53	55	55	55	58	63	55	67	69	69	
ECONOMICS	IBFS	18	17	21	20	27	16	18	17	23	22	30	
		281	260	260	253	257	251	272	246	275	279	301	
BUSINESS ADMINISTRATION	IBTS	229	203	222	209	226	212	252	222	272	241	271	
MANAGEMENT INFO SYSTEMS	IBTS	163	138	134	131	134	118	128	113	121	126	120	
MANAGEMENT	IBTS	130	136	121	109	105	119	110	98	109	105	120	
MARKETING	IBTS	63	63	66	57	61	69	76	62	72	57	69	
		585	540	543	506	526	518	566	495	574	529	580	
UNDECIDED		23	12	29	23	33	16	39	31	40	25	23	
		23	12	29	23	33	16	39	31	40	25	23	
SUBTOTAL		889	812	832	782	816	785	877	772	889	833	904	

EDUCATION		F03	SP04	F04	SP05	F05	SP06	F06	SP07	F07	SP08	F08	SP09
BIS BILINGUAL EDUCATION	CI	19	15	15	13	10	9	11	16	43	31	21	
BIS EARLY CHILDHOOD	CI	105	86	109	98	108	92	128	122	133	134	118	
BIS EARLY CHILDHOOD-BIL	CI	261	283	328	315	321	325	348	357	389	401	441	
BIS EARLY CHILDHOOD-RDG	CI	24	26	25	40	65	91	91	85	70	65	46	
		409	410	477	466	504	517	578	580	635	631	626	
BIS SPECIAL EDUCATION	PPRO	28	30	39	44	45	47	56	50	69	72	73	
BS COMM DISORDERS	PPRO										1	67	
		28	30	39	44	45	47	56	50	69	73	140	
BS FITNESS NON CERTIFICATE	TCHP	19	20	19	23	22	21	33	30	45	50	50	
BS FITNESS&SPORTS	TCHP	97	111	130	125	114	126	122	125	132	105	109	
		116	131	149	148	136	147	155	155	177	155	159	
UNDECIDED		8	6	14	7	5	1	6	6	19	12	21	
		8	6	14	7	5	1	6	6	19	12	21	
SUBTOTAL		561	577	679	665	690	712	795	791	900	871	946	

SCHOOL OF NURSING		F03	SP04	F04	SP05	F05	SP06	F06	SP07	F07	SP08	F08	SP09
NURSING	NURS	224	231	229	228	239	247	276	271	294	291	304	
UNDECIDED												1	
SUBTOTAL		224	231	229	228	239	247	276	271	294	291	305	

TOTAL UNDERGRAD		3115	3093	3330	3219	3334	3302	3880	3643	4122	3957	4798	
------------------------	--	-------------	-------------	-------------	-------------	-------------	-------------	-------------	-------------	-------------	-------------	-------------	--

GRADUATE

ARTS&HUMANITIES

		F03	SP04	F04	SP05	F05	SP06	F06	SP07	F07	SP08	F08	SP09
COUNSELING PSYCH	BACJ	29	23	23	26	28	31	34	39	36	30	30	
SOCIOLOGY	BACJ	10	10	6	8	17	14	14	12	6	9	13	
CRIMINAL JUSTICE	BACJ	30	27	31	30	33	43	41	30	30	38	27	
PSYCHOLOGY	BACJ							4	7	10	10	3	
		69	60	60	64	78	88	93	88	82	87	73	
BIOLOGY	BC					9	9	14	16	18	17	13	
						9	9	14	16	18	17	13	
ENGLISH	LL	13	9	18	17	7	7	10	7	14	17	20	
SPANISH	LL	17	16	17	14	6	7	11	10	7	4	10	
		30	25	35	31	13	14	21	17	21	21	30	
MATHEMATICS	MPHS	5	7	9	2	1	2	4	3	6	8	8	
		5	7	9	2	1	2	4	3	6	8	8	
HISTORY	SSC	9	6	10	4	5	7	5	7	8	5	6	
INTERDISCIPLINARY STUDIES	SSC							3	2	8	9	3	
POLITICAL SCIENCE	SSC	8	8	9	8	10	8	6	6	3	5	2	
PUBLIC ADMINISTRATION	SSC	49	42	45	44	45	47	50	53	60	52	50	
		66	56	64	56	60	62	64	68	79	71	61	
UNDECIDED		38	26	23	24	17	33	37	40	21	38	24	
		38	26	23	24	17	35	37	40	21	38	24	
SUBTOTAL		208	174	191	177	178	210	233	232	227	242	209	

BUSINESS

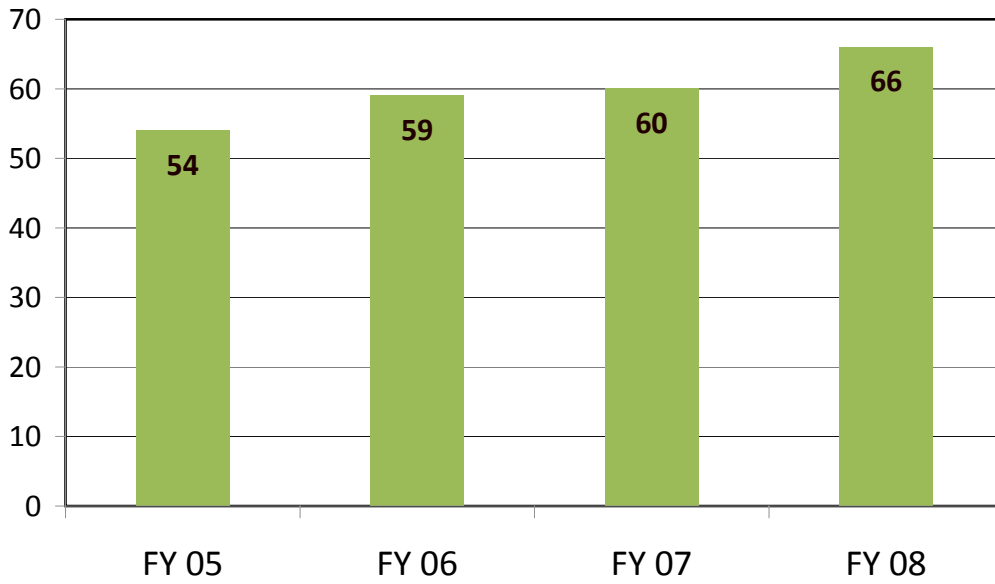
		F03	SP04	F04	SP05	F05	SP06	F06	SP07	F07	SP08	F08	SP09
ACCOUNTING	IBFS							7	4	8	7	10	
FINANCE	IBFS			1	2	6	7	3	3	9	5	11	
INTERNATIONAL BANKING	IBFS	13	13	11	10	14	11	6	6	4	5	5	
INTERNATIONAL TRADE	IBFS	14	15	17	15	13	10	7	8	13	15	12	
PROF ACCOUNTANCY	IBFS	13	17	17	18	25	31	22	23	25	33	31	
		40	45	46	45	58	59	45	44	59	65	69	
BUSINESS ADMIN	IBTS	150	103	80	76	53	33	23	13	10	8	11	
INFORMATION SYSTEMS	IBTS	48	42	26	35	44	49	58	66	74	61	73	
INTERNATIONAL BUSINESS	IBTS		29	14	14	44	51	78	90	90	90	88	
INTERNATIONAL BUS ADMIN	IBTS			8	8	13	13	16	15	15	15	20	
INTERNATIONAL LOGISTICS	IBTS											2	
MANAGEMENT	IBTS		8	16	23	24	28	20	24	23	31	30	
MARKETING	IBTS			1	1			4	6	3	2	4	
		198	182	145	157	178	174	199	214	215	207	228	
UNDECIDED		15	40	36	35	33	30	36	32	63	51	62	
		15	40	36	35	33	30	36	32	63	51	62	
SUBTOTAL		253	267	227	237	269	263	280	290	337	323	359	

EDUCATION		F03	SP04	F04	SP05	F05	SP06	F06	SP07	F07	SP08	F08	SP09
CURRICULUM&INSTRUCTION	CI	10	10	26	23	22	29	37	36	55	49	48	
BILINGUAL EDUCATION	CI	19	22	23	35	26	30	26	27	21	22	19	
EARLY CHILDHOOD ED	CI	22	22	17	14	10	9	7	7	6	5	2	
READING	CI	10	16	13	21	20	25	33	37	27	28	24	
		61	70	79	93	78	93	103	107	109	104	93	
GENERIC SPECIAL ED	PPRO	25	44	61	60	52	58	41	54	42	41	34	
SCHOOL COUNSELING	PPRO	13	42	58	63	62	68	56	51	51	50	64	
ADMIN-MIDMANAGEMT	PPRO	91	105	109	123	126	141	97	125	142	139	137	
SUPERINTENDENCY	PPRO	6	6	2	7	8	12						
CERTIFICATION	PPRO	262	248	163	179	145	131	127	114	90	98	71	
COUNSELING&GUIDANCE	PPRO	11	5	5	1								
EDUC DIAGNOSTICIAN	PPRO	9	4	2	1								
		417	454	400	434	393	410	321	344	325	328	306	
SPECIAL NON-DEGREE		24	22	21	23	20	75	71	59	49	56	65	
		24	22	21	23	20	75	71	59	49	56	65	
SUBTOTAL		502	546	500	550	491	578	495	510	483	488	464	
SCHOOL OF NURSING		F03	SP04	F04	SP05	F05	SP06	F06	SP07	F07	SP08	F08	SP09
NURSING	NURS			21	19	26	26	24	7	20	14	30	
NON-DEGREE/UNDECIDED													
SUBTOTAL				21	19	26	26	24	7	20	14	30	
TOTAL GRADS		963	987	939	983	964	1077	1032	1039	1067	1067	1062	
UNDERGRADUATES		3115	3093	3330	3219	3334	3302	3880	3643	4122	3957	4798	
GRADUATES		963	987	939	983	964	1077	1032	1039	1067	1067	1062	
TOTAL		4078	4080	4269	4202	4298	4379	4912	4682	5189	5024	5860	

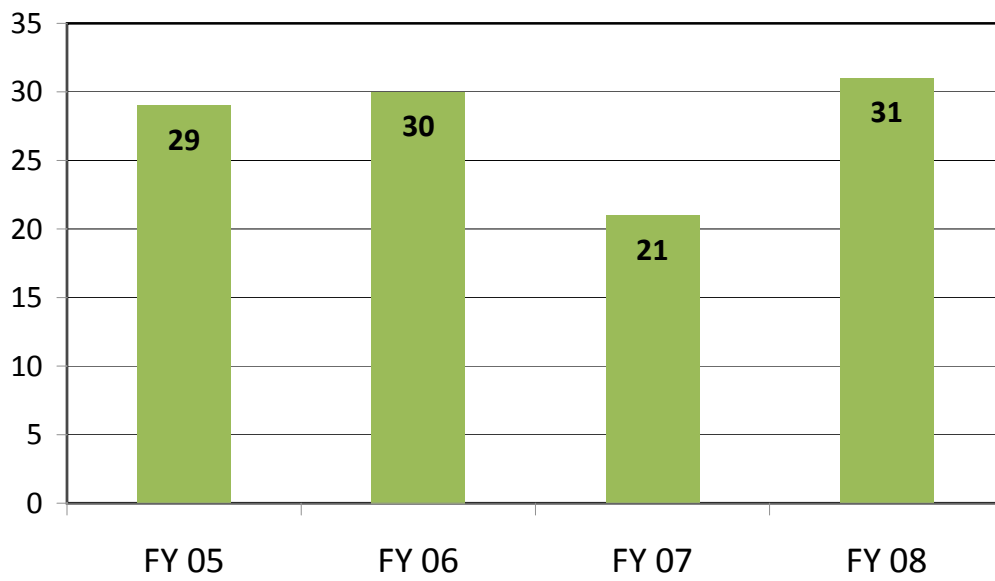
02/25/2009 17:16

Note: Data broken down by concentrations beginning Fall 2007 and updated 11/08.

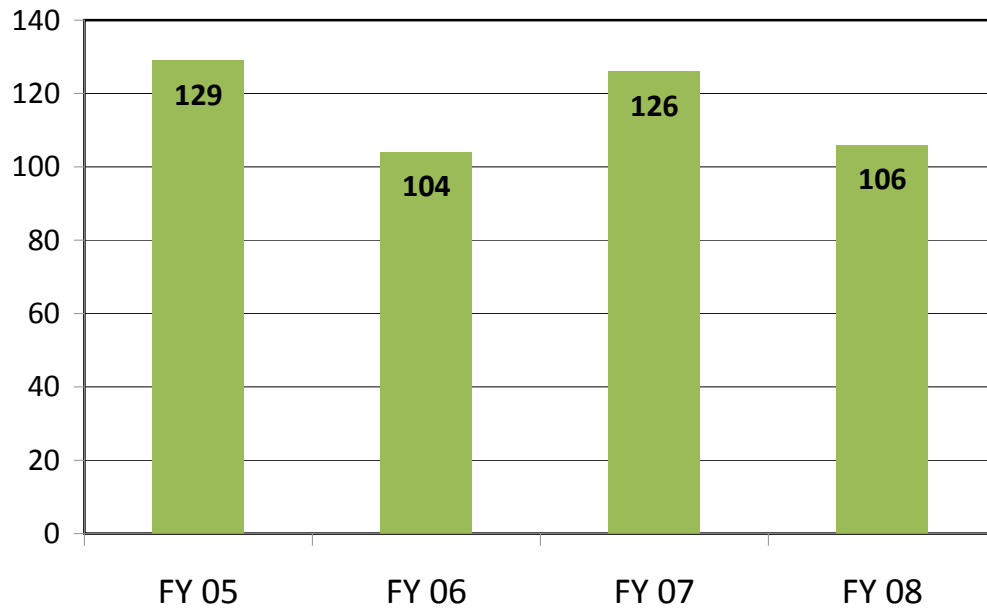
Bachelor Degrees for IBFS



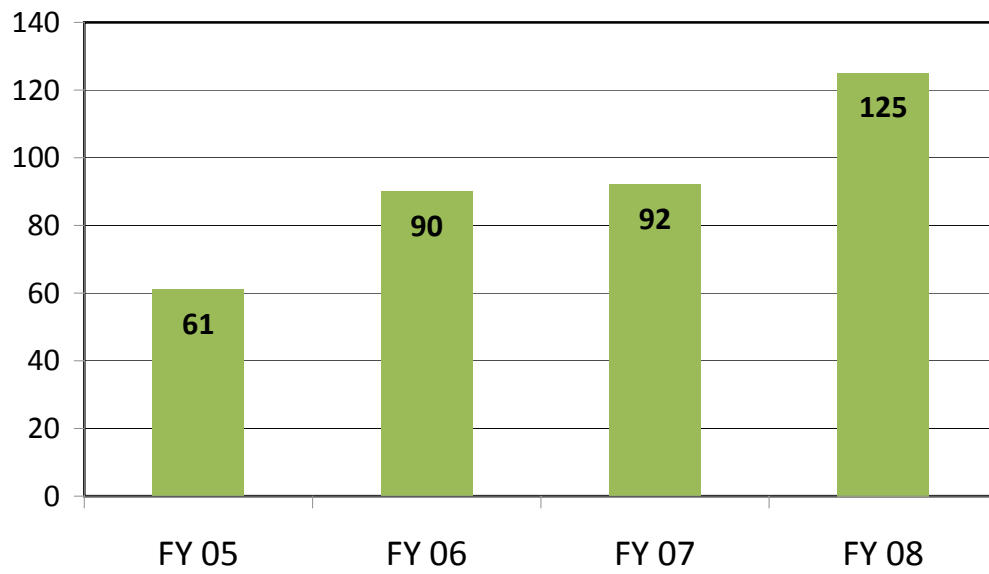
Master's Degrees for IBFS



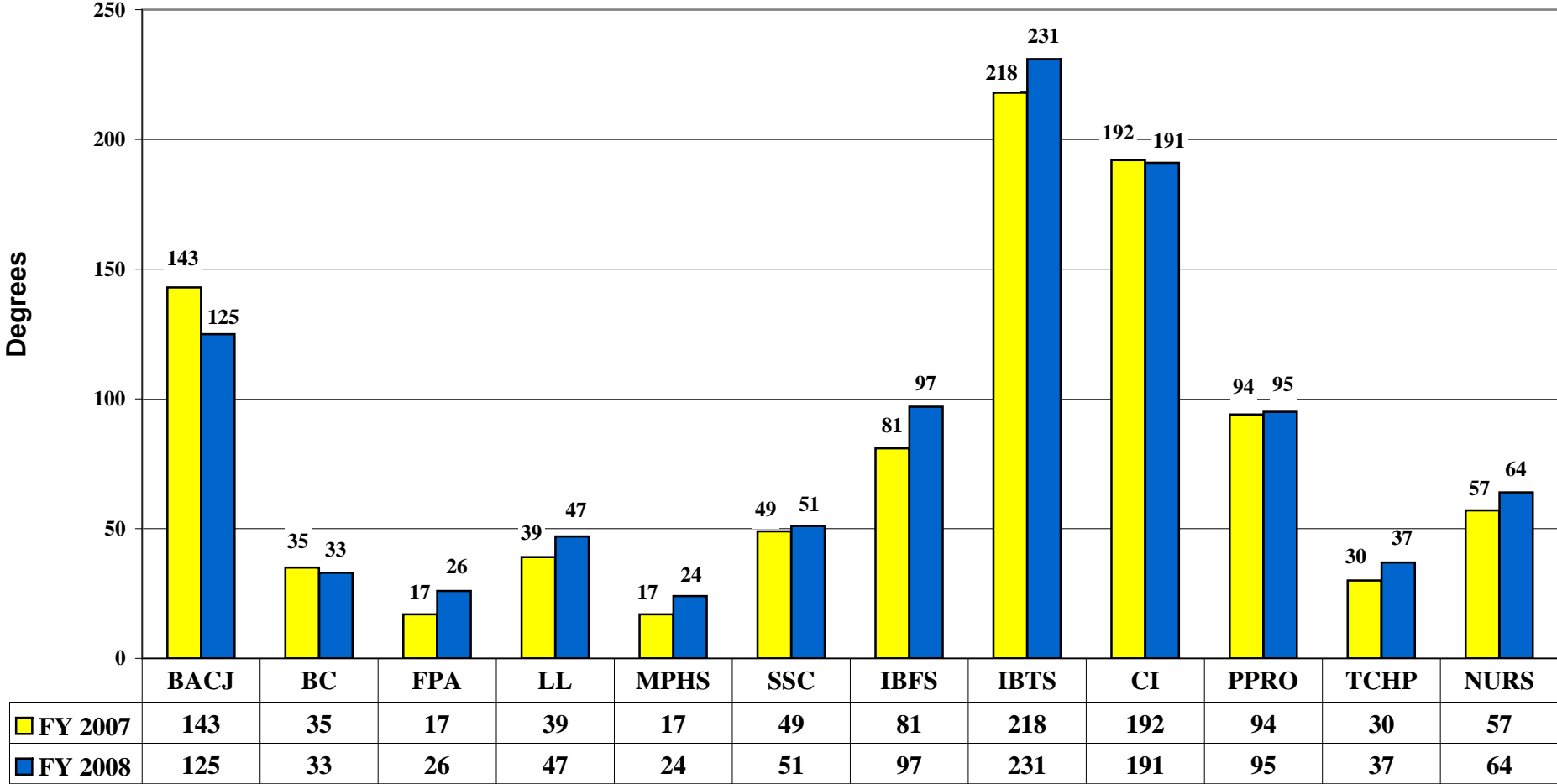
Bachelor Degrees for IBTS



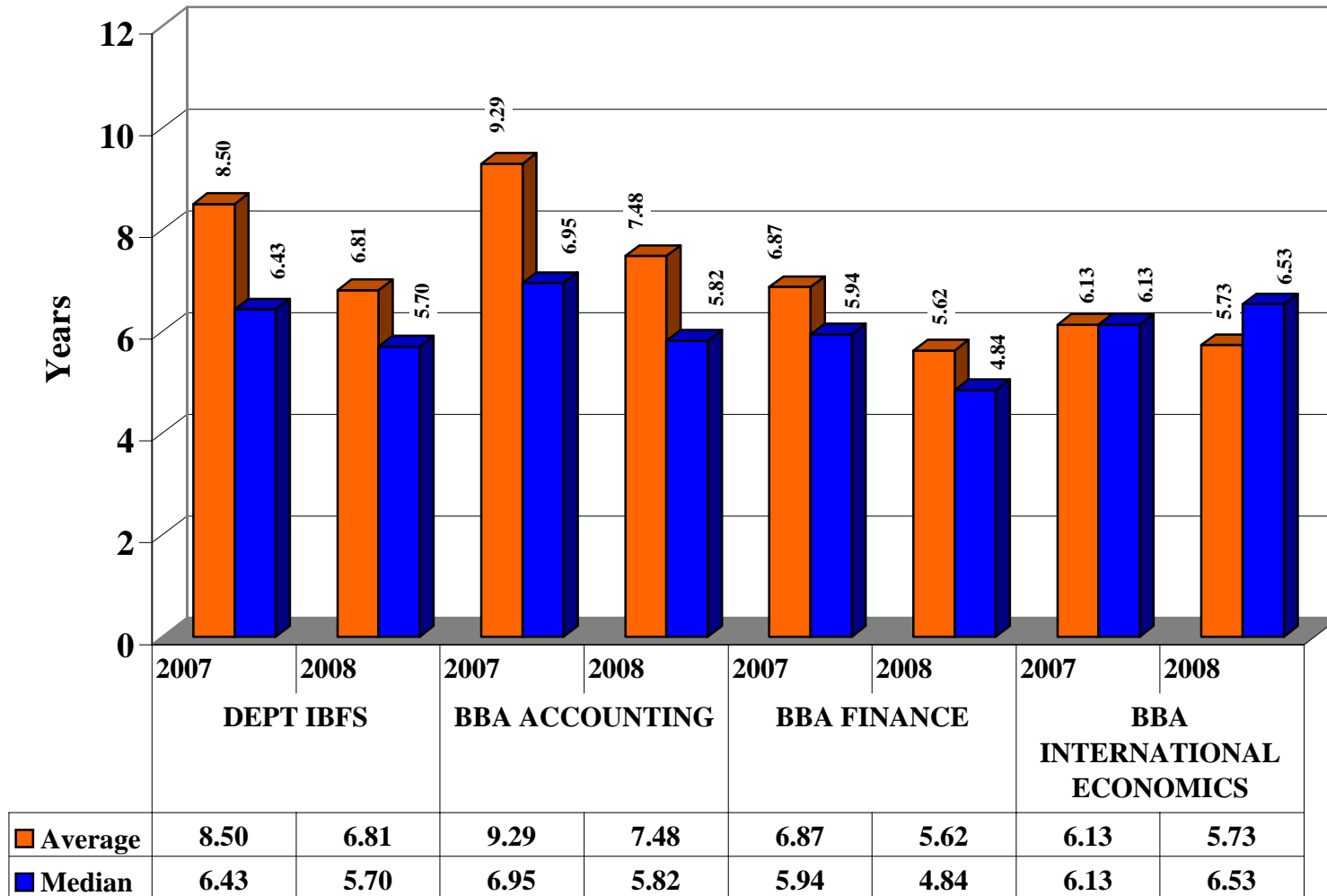
Master's Degrees for IBTS



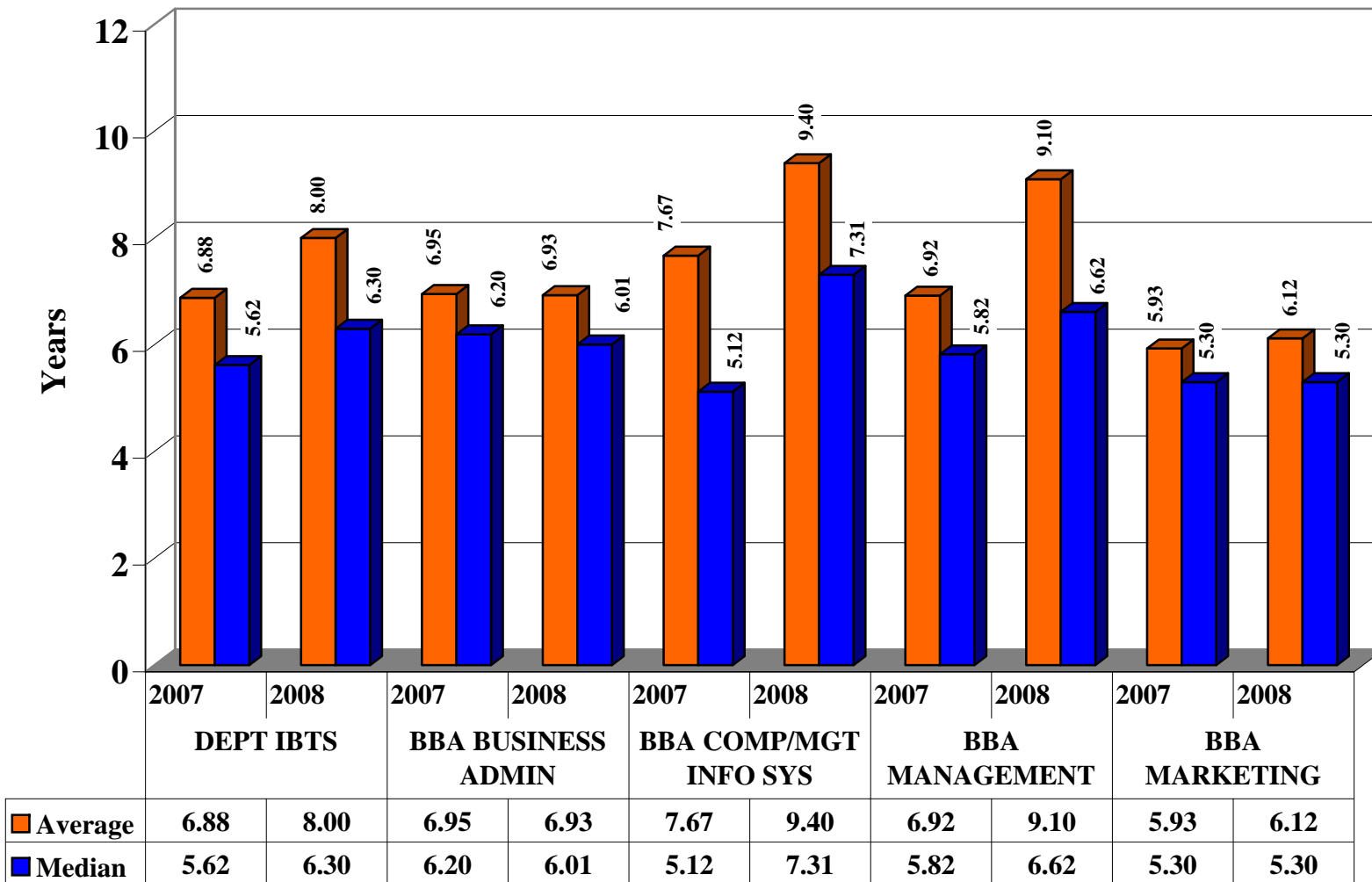
Total Degrees Awarded FY 2007-FY 2008



Average and Median Time to Undergraduate Degree Dept: IBFS



Average and Median Time to Undergraduate Degree Dept: IBTS



Graduation Candidate Survey Results for Calendar Year 2008

College of Business Administration

Indicate the extent to which you agree/disagree with the following statements about Texas A&M International University.

Col				The General Education/core requirements were a valuable component to my education.						
				Strongly Agree	Agree	Neutral	Disagree	Strongly Disagree	Total	
BA	BBA	Major	Accounting	Count	19	21	2	2	0	44
			%	43.2%	47.7%	4.5%	4.5%	.0%	100.0%	
			Business Administration	Count	52	33	6	2	1	94
			%	55.3%	35.1%	6.4%	2.1%	1.1%	100.0%	
			Management Information Systems	Count	11	6	2	0	0	19
			%	57.9%	31.6%	10.5%	.0%	.0%	100.0%	
			Total	Count	82	60	10	4	1	157
			%	52.2%	38.2%	6.4%	2.5%	.6%	100.0%	
MBA	Major	Business Administration	Count	38	21	2			61	
			%	62.3%	34.4%	3.3%			100.0%	
			International Banking	Count	1	1	0			2
			%	50.0%	50.0%	.0%			100.0%	
			International Trade	Count	2	0	0			2
			%	100.0%	.0%	.0%			100.0%	
			Total	Count	41	22	2			65
			%	63.1%	33.8%	3.1%			100.0%	
MPACC	Major	Accounting	Count	5	9	1			15	
			%	33.3%	60.0%	6.7%			100.0%	
		Total	Count	5	9	1			15	
			%	33.3%	60.0%	6.7%			100.0%	
MS	Major	Information Systems	Count	10	11	3		1	25	
			%	40.0%	44.0%	12.0%		4.0%	100.0%	
		Total	Count	10	11	3		1	25	
			%	40.0%	44.0%	12.0%		4.0%	100.0%	

Col					Most faculty were readily available to students outside class time.					
					Strongly Agree	Agree	Neutral	Disagree	Strongly Disagree	Total
BA	BBA	Major	Accounting	Count	16	23	2	3	0	44
			%	36.4%	52.3%	4.5%	6.8%	.0%	100.0%	
			Business Administration	Count	39	35	14	6	1	95
			%	41.1%	36.8%	14.7%	6.3%	1.1%	100.0%	
			Management Information Systems	Count	12	5	2	0	0	19
			%	63.2%	26.3%	10.5%	.0%	.0%	100.0%	
			Total	Count	67	63	18	9	1	158
			%	42.4%	39.9%	11.4%	5.7%	.6%	100.0%	
MBA	Major	Business Administration	Count	28	25	7	1		61	
		%	45.9%	41.0%	11.5%	1.6%		100.0%		
		International Banking	Count	1	0	1	0		2	
		%	50.0%	.0%	50.0%	.0%		100.0%		
			International Trade	Count	1	1	0	0		2
			%	50.0%	50.0%	.0%	.0%		100.0%	
			Total	Count	30	26	8	1		65
			%	46.2%	40.0%	12.3%	1.5%		100.0%	
MPACC	Major	Accounting	Count	6	7	2			15	
		%	40.0%	46.7%	13.3%			100.0%		
		Total	Count	6	7	2			15	
%	40.0%	46.7%	13.3%			100.0%				
MS	Major	Information Systems	Count	13	8	3		1	25	
		%	52.0%	32.0%	12.0%		4.0%	100.0%		
		Total	Count	13	8	3		1	25	
%	52.0%	32.0%	12.0%		4.0%	100.0%				

Col					There was a sense of personal safety/security on campus.					
					Strongly Agree	Agree	Neutral	Disagree	Strongly Disagree	Total
BA	BBA	Major	Accounting	Count	24	18	2	0	0	44
			%	54.5%	40.9%	4.5%	.0%	.0%	100.0%	
			Business Administration	Count	51	28	9	3	1	92
			%	55.4%	30.4%	9.8%	3.3%	1.1%	100.0%	
			Management Information Systems	Count	15	3	1	0	0	19
			%	78.9%	15.8%	5.3%	.0%	.0%	100.0%	
			Total	Count	90	49	12	3	1	155
			%	58.1%	31.6%	7.7%	1.9%	.6%	100.0%	
MBA	Major	Business Administration	Count	36	17	6	1		60	
		%	60.0%	28.3%	10.0%	1.7%		100.0%		
		International Banking	Count	1	1	0	0		2	
		%	50.0%	50.0%	.0%	.0%		100.0%		
			International Trade	Count	1	1	0	0		2
			%	50.0%	50.0%	.0%	.0%		100.0%	
			Total	Count	38	19	6	1		64
			%	59.4%	29.7%	9.4%	1.6%		100.0%	
MPACC	Major	Accounting	Count	7	7	1			15	
		%	46.7%	46.7%	6.7%			100.0%		
		Total	Count	7	7	1			15	
%	46.7%	46.7%	6.7%			100.0%				
MS	Major	Information Systems	Count	13	11			1	25	
		%	52.0%	44.0%			4.0%	100.0%		
		Total	Count	13	11			1	25	
%	52.0%	44.0%			4.0%	100.0%				

					Academic success was encouraged and supported.					
Col	Degr				Strongly Agree	Agree	Neutral	Disagree	Strongly Disagree	Total
BA	BBA	Major	Accounting	Count	27	11	5	1		44
				%	61.4%	25.0%	11.4%	2.3%		100.0%
			Business Administration	Count	52	28	11	3		94
				%	55.3%	29.8%	11.7%	3.2%		100.0%
			Management Information Systems	Count	10	7	2	0		19
				%	52.6%	36.8%	10.5%	.0%		100.0%
			Total	Count	89	46	18	4		157
				%	56.7%	29.3%	11.5%	2.5%		100.0%
MBA	Major	Business Administration	Count	40	17	3			60	
			%	66.7%	28.3%	5.0%			100.0%	
			International Banking	Count	2	0	0			2
			%	100.0%	.0%	.0%			100.0%	
			International Trade	Count	2	0	0		2	
			%	100.0%	.0%	.0%			100.0%	
			Total	Count	44	17	3		64	
			%	68.8%	26.6%	4.7%		100.0%		
MPACC	Major	Accounting	Count	6	9				15	
			%	40.0%	60.0%				100.0%	
		Total	Count	6	9				15	
			%	40.0%	60.0%				100.0%	
MS	Major	Information Systems	Count	11	12	1		1	25	
			%	44.0%	48.0%	4.0%		4.0%	100.0%	
		Total	Count	11	12	1		1	25	
			%	44.0%	48.0%	4.0%		4.0%	100.0%	

					I encountered few course scheduling or course availability problems.					
Col	Degr				Strongly Agree	Agree	Neutral	Disagree	Strongly Disagree	Total
BA	BBA	Major	Accounting	Count	16	19	5	4	0	44
				%	36.4%	43.2%	11.4%	9.1%	.0%	100.0%
			Business Administration	Count	27	38	15	10	5	95
			%	28.4%	40.0%	15.8%	10.5%	5.3%	100.0%	
			Management Information Systems	Count	5	7	6	0	1	19
			%	26.3%	36.8%	31.6%	.0%	5.3%	100.0%	
			Total	Count	48	64	26	14	6	158
			%	30.4%	40.5%	16.5%	8.9%	3.8%	100.0%	
MBA	Major	Business Administration	Count	19	23	9	5	5	61	
			%	31.1%	37.7%	14.8%	8.2%	8.2%	100.0%	
			International Banking	Count	1	1	0	0	0	2
			%	50.0%	50.0%	.0%	.0%	.0%	100.0%	
			International Trade	Count	0	1	0	1	0	2
			%	.0%	50.0%	.0%	50.0%	.0%	100.0%	
			Total	Count	20	25	9	6	5	65
			%	30.8%	38.5%	13.8%	9.2%	7.7%	100.0%	
MPACC	Major	Accounting	Count	5	5	2	3		15	
			%	33.3%	33.3%	13.3%	20.0%		100.0%	
		Total	Count	5	5	2	3		15	
			%	33.3%	33.3%	13.3%	20.0%		100.0%	
MS	Major	Information Systems	Count	7	11	1	4	2	25	
			%	28.0%	44.0%	4.0%	16.0%	8.0%	100.0%	
		Total	Count	7	11	1	4	2	25	
			%	28.0%	44.0%	4.0%	16.0%	8.0%	100.0%	

Indicate the impact of your experiences at this school on your attainment of each skill.

					Defining and solving problems.				
					Major Impact	Moderate Impact	Minor Impact	No Impact	Total
Col	Degr	Major		Count					
BA	BBA	Major	Accounting	Count	17	25	1	1	44
				%	38.6%	56.8%	2.3%	2.3%	100.0%
			Business Administration	Count	42	39	11	2	94
				%	44.7%	41.5%	11.7%	2.1%	100.0%
			Management Information Systems	Count	8	9	0	0	17
				%	47.1%	52.9%	.0%	.0%	100.0%
			Total	Count	67	73	12	3	155
				%	43.2%	47.1%	7.7%	1.9%	100.0%
MBA	Major	Business Administration	Count	34	21	4	1	60	
			%	56.7%	35.0%	6.7%	1.7%	100.0%	
			International Banking	Count	1	1	0	0	2
			%	50.0%	50.0%	.0%	.0%	100.0%	
			International Trade	Count	0	1	1	0	2
			%	.0%	50.0%	50.0%	.0%	100.0%	
Total			Count	35	23	5	1	64	
			%	54.7%	35.9%	7.8%	1.6%	100.0%	
MPACC	Major	Accounting	Count	5	9	1		15	
			%	33.3%	60.0%	6.7%		100.0%	
Total			Count	5	9	1		15	
			%	33.3%	60.0%	6.7%		100.0%	
MS	Major	Information Systems	Count	12	11	2		25	
			%	48.0%	44.0%	8.0%		100.0%	
Total			Count	12	11	2		25	
			%	48.0%	44.0%	8.0%		100.0%	

					Thinking objectively about beliefs, attitudes and values.					
					Major Impact	Moderate Impact	Minor Impact	No Impact	E	Total
Col	Degr	Major		Count						
BA	BBA	Major	Accounting	Count	18	24	1	1		44
				%	40.9%	54.5%	2.3%	2.3%		100.0%
			Business Administration	Count	47	33	9	5		94
				%	50.0%	35.1%	9.6%	5.3%		100.0%
			Management Information Systems	Count	7	8	1	1		17
				%	41.2%	47.1%	5.9%	5.9%		100.0%
			Total	Count	72	65	11	7		155
				%	46.5%	41.9%	7.1%	4.5%		100.0%
MBA	Major	Business Administration	Count	37	20	4			61	
			%	60.7%	32.8%	6.6%			100.0%	
			International Banking	Count	2	0	0			2
			%	100.0%	.0%	.0%			100.0%	
			International Trade	Count	1	1	0		2	
			%	50.0%	50.0%	.0%			100.0%	
Total			Count	40	21	4			65	
			%	61.5%	32.3%	6.2%			100.0%	
MPACC	Major	Accounting	Count	5	7	3			15	
			%	33.3%	46.7%	20.0%			100.0%	
Total			Count	5	7	3			15	
			%	33.3%	46.7%	20.0%			100.0%	
MS	Major	Information Systems	Count	13	9	1	1	1	25	
			%	52.0%	36.0%	4.0%	4.0%	4.0%	100.0%	
Total			Count	13	9	1	1	1	25	
			%	52.0%	36.0%	4.0%	4.0%	4.0%	100.0%	

					Making and exercising a lifelong commitment to learning.				
Col	Deqr				Major Impact	Moderate Impact	Minor Impact	No Impact	Total
BA	BBA	Major	Accounting	Count	19	21	4	0	44
				%	43.2%	47.7%	9.1%	.0%	100.0%
		Business Administration	Count	51	32	7	3	93	
			%	54.8%	34.4%	7.5%	3.2%	100.0%	
Management Information Systems	Count	8	8	1	0	17			
	%	47.1%	47.1%	5.9%	.0%	100.0%			
Total	Count	78	61	12	3	154			
	%	50.6%	39.6%	7.8%	1.9%	100.0%			
MBA	Major	Business Administration	Count	42	18	1		61	
			%	68.9%	29.5%	1.6%		100.0%	
		International Banking	Count	1	1	0		2	
			%	50.0%	50.0%	.0%		100.0%	
International Trade	Count	1	1	0		2			
	%	50.0%	50.0%	.0%		100.0%			
Total	Count	44	20	1		65			
	%	67.7%	30.8%	1.5%		100.0%			
MPACC	Major	Accounting	Count	7	7	1		15	
			%	46.7%	46.7%	6.7%		100.0%	
		Total	Count	7	7	1		15	
%	46.7%	46.7%	6.7%		100.0%				
MS	Major	Information Systems	Count	18	6	1		25	
			%	72.0%	24.0%	4.0%		100.0%	
		Total	Count	18	6	1		25	
%	72.0%	24.0%	4.0%		100.0%				

					Accessing and using a variety of information resources.				
Col	Deqr				Major Impact	Moderate Impact	Minor Impact	No Impact	Total
BA	BBA	Major	Accounting	Count	21	19	3	1	44
				%	47.7%	43.2%	6.8%	2.3%	100.0%
		Business Administration	Count	56	29	5	4	94	
			%	59.6%	30.9%	5.3%	4.3%	100.0%	
Management Information Systems	Count	7	10	0	0	17			
	%	41.2%	58.8%	.0%	.0%	100.0%			
Total	Count	84	58	8	5	155			
	%	54.2%	37.4%	5.2%	3.2%	100.0%			
MBA	Major	Business Administration	Count	37	21	1	2	61	
			%	60.7%	34.4%	1.6%	3.3%	100.0%	
		International Banking	Count	1	1	0	0	2	
			%	50.0%	50.0%	.0%	.0%	100.0%	
International Trade	Count	2	0	0	0	2			
	%	100.0%	.0%	.0%	.0%	100.0%			
Total	Count	40	22	1	2	65			
	%	61.5%	33.8%	1.5%	3.1%	100.0%			
MPACC	Major	Accounting	Count	5	7	3		15	
			%	33.3%	46.7%	20.0%		100.0%	
		Total	Count	5	7	3		15	
%	33.3%	46.7%	20.0%		100.0%				
MS	Major	Information Systems	Count	13	7	5		25	
			%	52.0%	28.0%	20.0%		100.0%	
		Total	Count	13	7	5		25	
%	52.0%	28.0%	20.0%		100.0%				

					Getting along with people from various cultures, races, backgrounds, etc.				
Col	Degr				Major Impact	Moderate Impact	Minor Impact	No Impact	Total
BA	BBA	Major	Accounting	Count	22	17	5	0	44
				%	50.0%	38.6%	11.4%	.0%	100.0%
			Business Administration	Count	48	31	8	7	94
				%	51.1%	33.0%	8.5%	7.4%	100.0%
			Management Information Systems	Count	7	9	1	0	17
				%	41.2%	52.9%	5.9%	.0%	100.0%
			Total	Count	77	57	14	7	155
				%	49.7%	36.8%	9.0%	4.5%	100.0%
MBA	Major		Business Administration	Count	28	24	5	4	61
				%	45.9%	39.3%	8.2%	6.6%	100.0%
			International Banking	Count	1	1	0	0	2
				%	50.0%	50.0%	.0%	.0%	100.0%
			International Trade	Count	1	1	0	0	2
				%	50.0%	50.0%	.0%	.0%	100.0%
			Total	Count	30	26	5	4	65
				%	46.2%	40.0%	7.7%	6.2%	100.0%
MPACC	Major		Accounting	Count	5	9	1		15
				%	33.3%	60.0%	6.7%		100.0%
			Total	Count	5	9	1		15
				%	33.3%	60.0%	6.7%		100.0%
MS	Major		Information Systems	Count	14	6	5		25
				%	56.0%	24.0%	20.0%		100.0%
			Total	Count	14	6	5		25
				%	56.0%	24.0%	20.0%		100.0%

					Using effective verbal communication skills.				
Col	Degr				Major Impact	Moderate Impact	Minor Impact	No Impact	Total
BA	BBA	Major	Accounting	Count	27	14	3	0	44
				%	61.4%	31.8%	6.8%	.0%	100.0%
			Business Administration	Count	52	28	12	2	94
				%	55.3%	29.8%	12.8%	2.1%	100.0%
			Management Information Systems	Count	8	9	0	0	17
				%	47.1%	52.9%	.0%	.0%	100.0%
			Total	Count	87	51	15	2	155
				%	56.1%	32.9%	9.7%	1.3%	100.0%
MBA	Major		Business Administration	Count	27	29	5		61
				%	44.3%	47.5%	8.2%		100.0%
			International Banking	Count	1	1	0		2
				%	50.0%	50.0%	.0%		100.0%
			International Trade	Count	1	1	0		2
				%	50.0%	50.0%	.0%		100.0%
			Total	Count	29	31	5		65
				%	44.6%	47.7%	7.7%		100.0%
MPACC	Major		Accounting	Count	6	7	2		15
				%	40.0%	46.7%	13.3%		100.0%
			Total	Count	6	7	2		15
				%	40.0%	46.7%	13.3%		100.0%
MS	Major		Information Systems	Count	14	7	4		25
				%	56.0%	28.0%	16.0%		100.0%
			Total	Count	14	7	4		25
				%	56.0%	28.0%	16.0%		100.0%

Col					Using effective written communication skills.					
						Major Impact	Moderate Impact	Minor Impact	No Impact	Total
BA	BBA	Major	Accounting	Count	0	27	14	2	1	44
				%	.0%	61.4%	31.8%	4.5%	2.3%	100.0%
			Business Administration	Count	1	53	29	9	3	95
				%	1.1%	55.8%	30.5%	9.5%	3.2%	100.0%
			Management Information Systems	Count	2	9	7	1	0	19
				%	10.5%	47.4%	36.8%	5.3%	.0%	100.0%
			Total	Count	3	89	50	12	4	158
				%	1.9%	56.3%	31.6%	7.6%	2.5%	100.0%
MBA	Major	Business Administration	Count		31	26	4		61	
			%		50.8%	42.6%	6.6%		100.0%	
			International Banking	Count	1	0	1		2	
			%		50.0%	.0%	50.0%		100.0%	
			International Trade	Count	2	0	0		2	
				%	100.0%	.0%	.0%		100.0%	
			Total	Count	34	26	5		65	
				%	52.3%	40.0%	7.7%		100.0%	
MPACC	Major	Accounting	Count		6	8	1		15	
			%		40.0%	53.3%	6.7%		100.0%	
			Total	Count	6	8	1		15	
				%	40.0%	53.3%	6.7%		100.0%	
MS	Major	Information Systems	Count		11	11	3		25	
			%		44.0%	44.0%	12.0%		100.0%	
			Total	Count	11	11	3		25	
				%	44.0%	44.0%	12.0%		100.0%	

Col					Developing and using effective leadership skills.				
					Major Impact	Moderate Impact	Minor Impact	No Impact	Total
BA	BBA	Major	Accounting	Count	21	19	3	0	43
				%	48.8%	44.2%	7.0%	.0%	100.0%
			Business Administration	Count	55	27	10	2	94
				%	58.5%	28.7%	10.6%	2.1%	100.0%
			Management Information Systems	Count	10	6	1	0	17
				%	58.8%	35.3%	5.9%	.0%	100.0%
			Total	Count	86	52	14	2	154
				%	55.8%	33.8%	9.1%	1.3%	100.0%
MBA	Major	Business Administration	Count		37	20	2	1	60
			%		61.7%	33.3%	3.3%	1.7%	100.0%
			International Banking	Count	1	1	0	0	2
			%		50.0%	50.0%	.0%	.0%	100.0%
			International Trade	Count	0	2	0	0	2
				%	.0%	100.0%	.0%	.0%	100.0%
			Total	Count	38	23	2	1	64
				%	59.4%	35.9%	3.1%	1.6%	100.0%
MPACC	Major	Accounting	Count		6	7	2		15
			%		40.0%	46.7%	13.3%		100.0%
			Total	Count	6	7	2		15
				%	40.0%	46.7%	13.3%		100.0%
MS	Major	Information Systems	Count		11	11	3		25
			%		44.0%	44.0%	12.0%		100.0%
			Total	Count	11	11	3		25
				%	44.0%	44.0%	12.0%		100.0%

Col					Working cooperatively in groups, working as team member.				
					Major Impact	Moderate Impact	Minor Impact	No Impact	Total
BA	BBA	Major	Accounting	Count	28	12	3	1	44
				%	63.6%	27.3%	6.8%	2.3%	100.0%
			Business Administration	Count	61	21	10	2	94
				%	64.9%	22.3%	10.6%	2.1%	100.0%
			Management Information Systems	Count	8	7	2	0	17
				%	47.1%	41.2%	11.8%	.0%	100.0%
			Total	Count	97	40	15	3	155
				%	62.6%	25.8%	9.7%	1.9%	100.0%
MBA	Major	Business Administration	Count	42	18	1		61	
			%	68.9%	29.5%	1.6%		100.0%	
			International Banking	Count	1	0	1		2
			%	50.0%	.0%	50.0%		100.0%	
			International Trade	Count	1	1	0	2	
				%	50.0%	50.0%	.0%	100.0%	
			Total	Count	44	19	2	65	
				%	67.7%	29.2%	3.1%	100.0%	
MPACC	Major	Accounting	Count	6	9			15	
			%	40.0%	60.0%			100.0%	
			Total	Count	6	9			15
				%	40.0%	60.0%		100.0%	
MS	Major	Information Systems	Count	11	13	1		25	
			%	44.0%	52.0%	4.0%		100.0%	
			Total	Count	11	13	1		25
				%	44.0%	52.0%	4.0%	100.0%	

Col					Understanding international issues (political, economic, etc.).					
					Major Impact	Moderate Impact	Minor Impact	No Impact	Total	
BA	BBA	Major	Accounting	Count	0	17	23	3	1	44
				% within Major	.0%	38.6%	52.3%	6.8%	2.3%	100.0%
			Business Administration	Count	1	48	31	13	2	95
				% within Major	1.1%	50.5%	32.6%	13.7%	2.1%	100.0%
			Management Information Systems	Count	2	7	8	2	0	19
				% within Major	10.5%	36.8%	42.1%	10.5%	.0%	100.0%
			Total	Count	3	72	62	18	3	158
				% within Major	1.9%	45.6%	39.2%	11.4%	1.9%	100.0%
MBA	Major	Business Administration	Count	41	16	4		61		
			% within Major	67.2%	26.2%	6.6%		100.0%		
			International Banking	Count	1	1	0		2	
			% within Major	50.0%	50.0%	.0%		100.0%		
			International Trade	Count	2	0	0	2		
				% within Major	100.0%	.0%	.0%	100.0%		
			Total	Count	44	17	4		65	
				% within Major	67.7%	26.2%	6.2%		100.0%	
MPACC	Major	Accounting	Count	5	6	4		15		
			% within Major	33.3%	40.0%	26.7%		100.0%		
			Total	Count	5	6	4		15	
				% within Major	33.3%	40.0%	26.7%		100.0%	
MS	Major	Information Systems	Count	8	12	3	2	25		
			% within Major	32.0%	48.0%	12.0%	8.0%	100.0%		
			Total	Count	8	12	3	2	25	
				% within Major	32.0%	48.0%	12.0%	8.0%	100.0%	