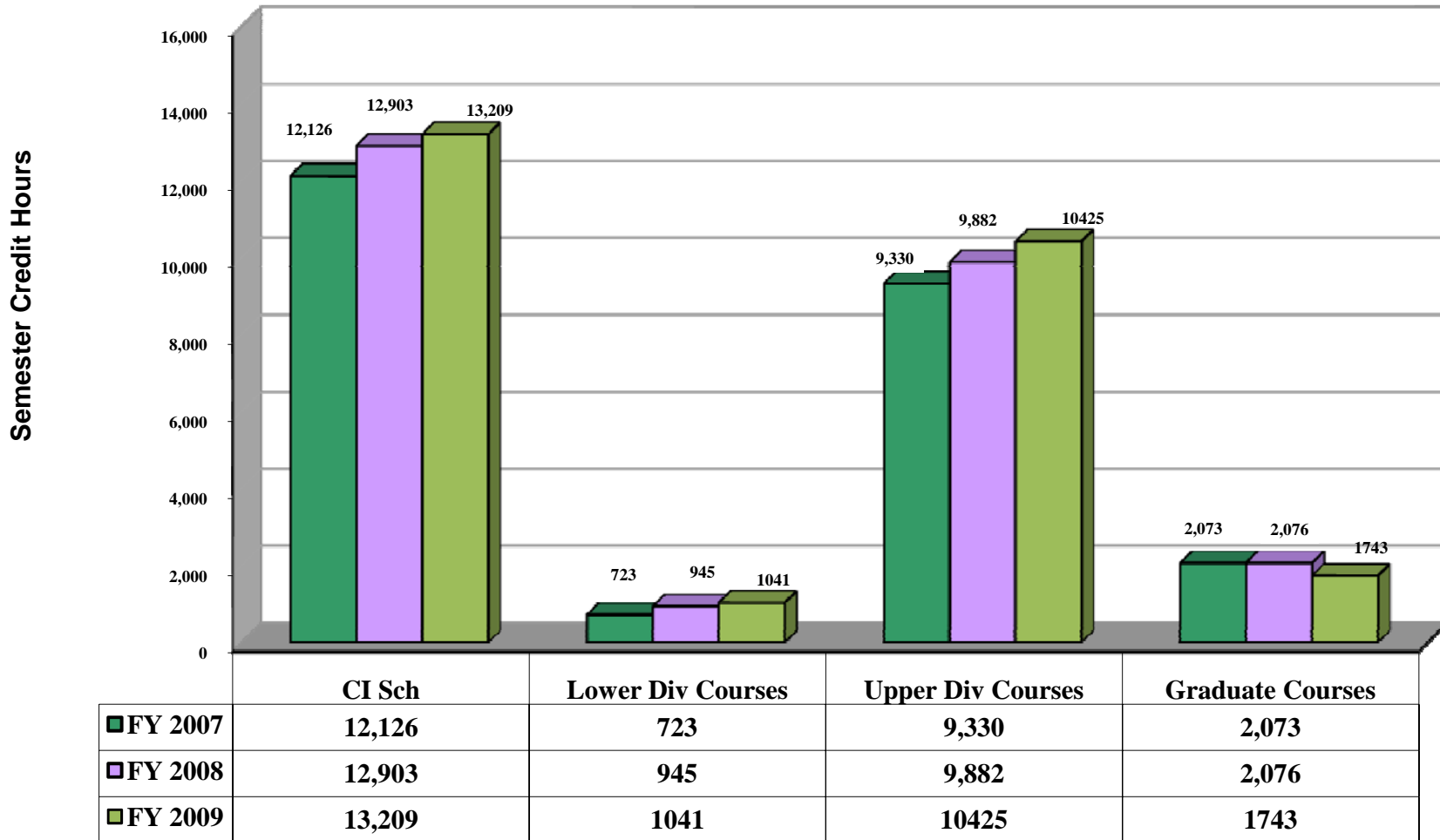


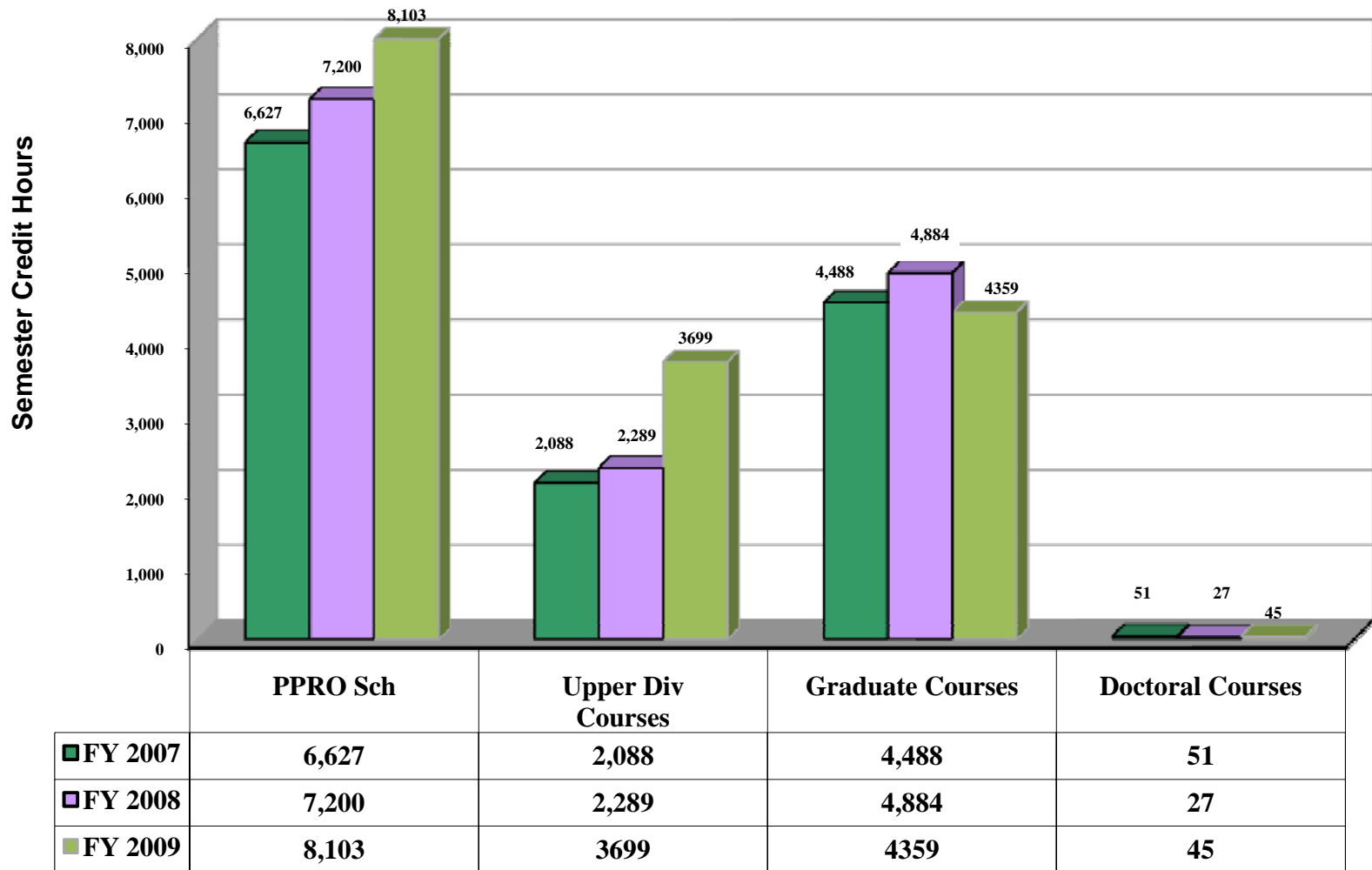
College of Education

Semester Credit Hours - Dept: CI



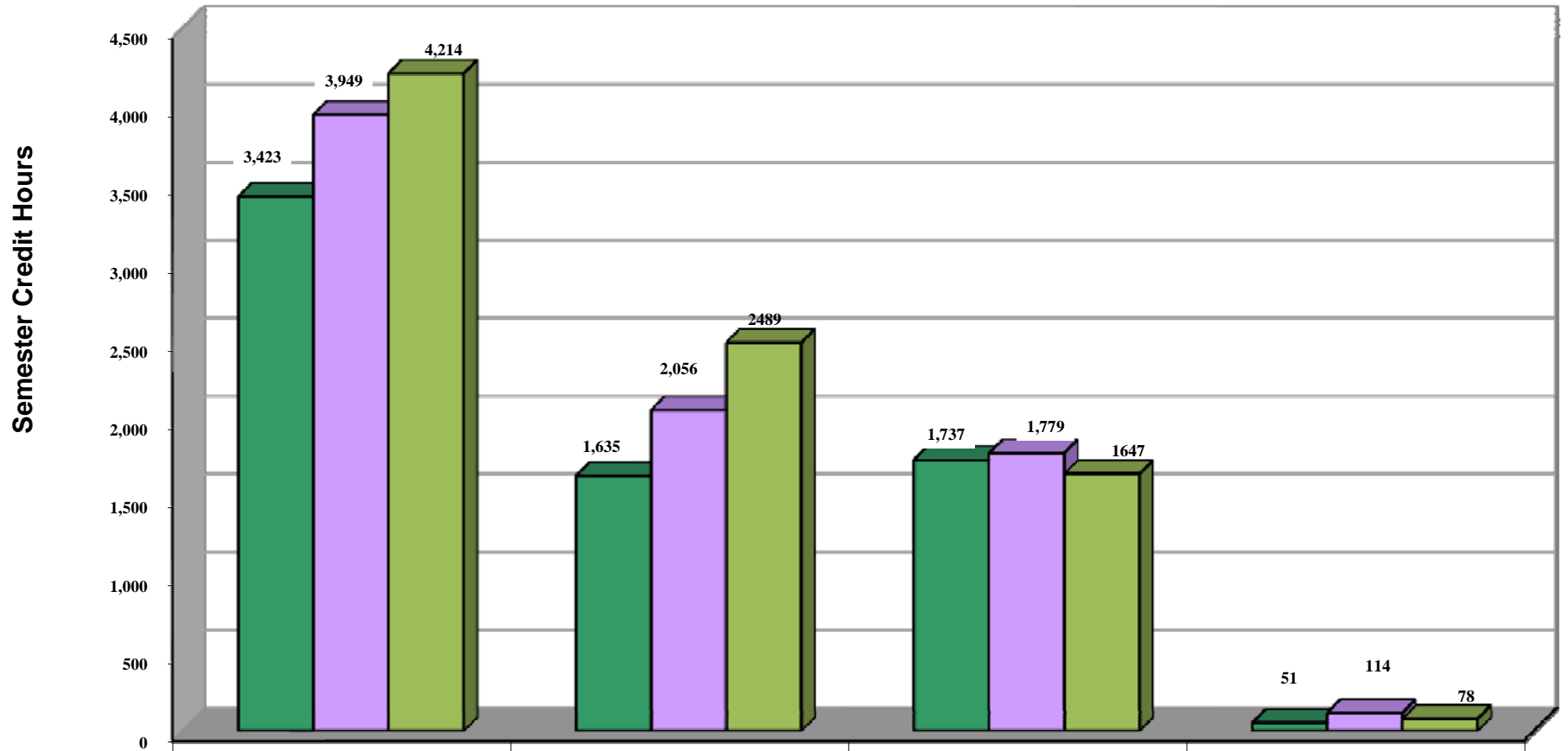
	CI Sch	Lower Div Courses	Upper Div Courses	Graduate Courses
FY 2007	12,126	723	9,330	2,073
FY 2008	12,903	945	9,882	2,076
FY 2009	13,209	1041	10425	1743

Semester Credit Hours - Dept: PPRO



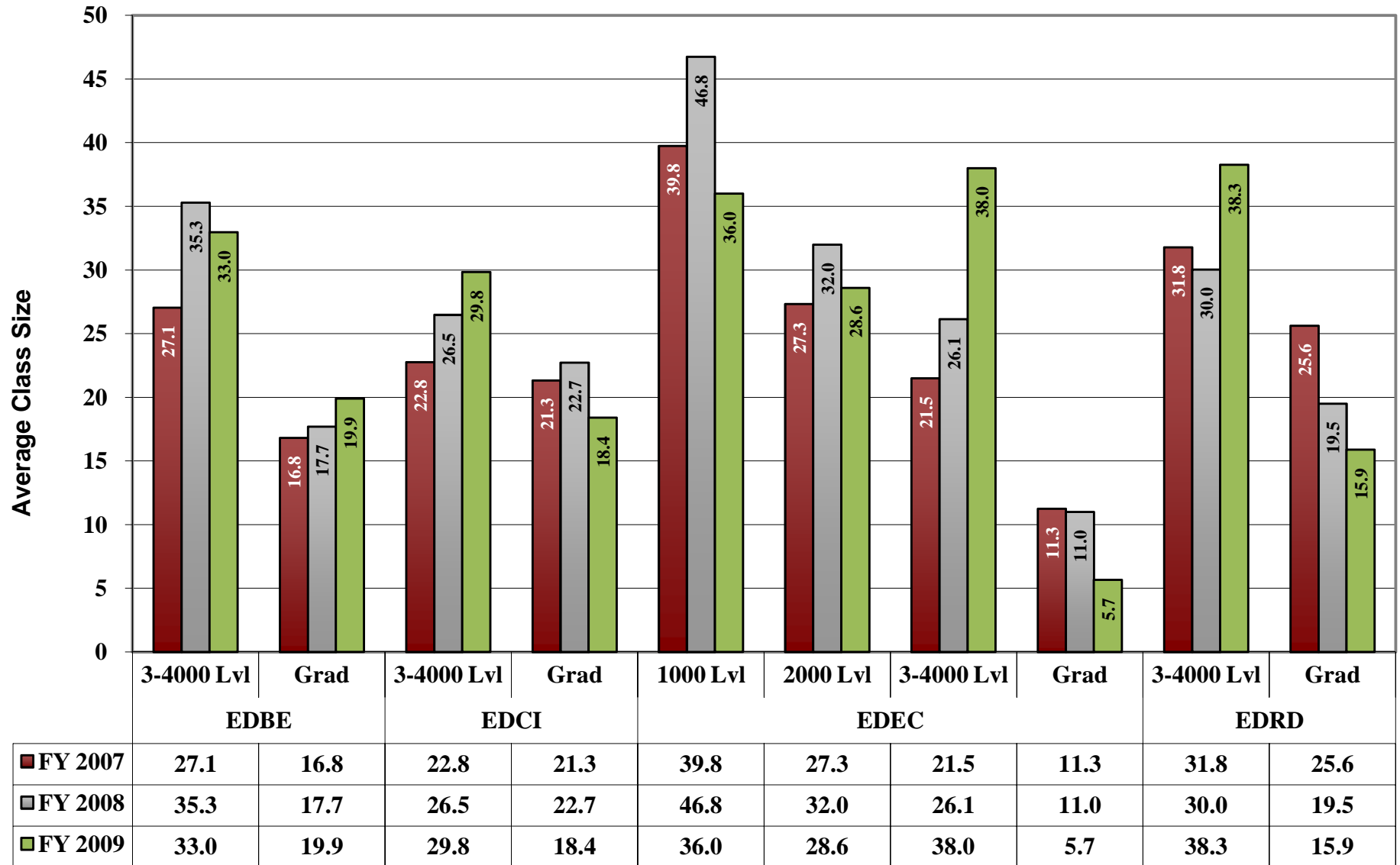
FY 2007	6,627	2,088	4,488	51
FY 2008	7,200	2,289	4,884	27
FY 2009	8,103	3,699	4,359	45

Semester Credit Hours - Dept: TCHP

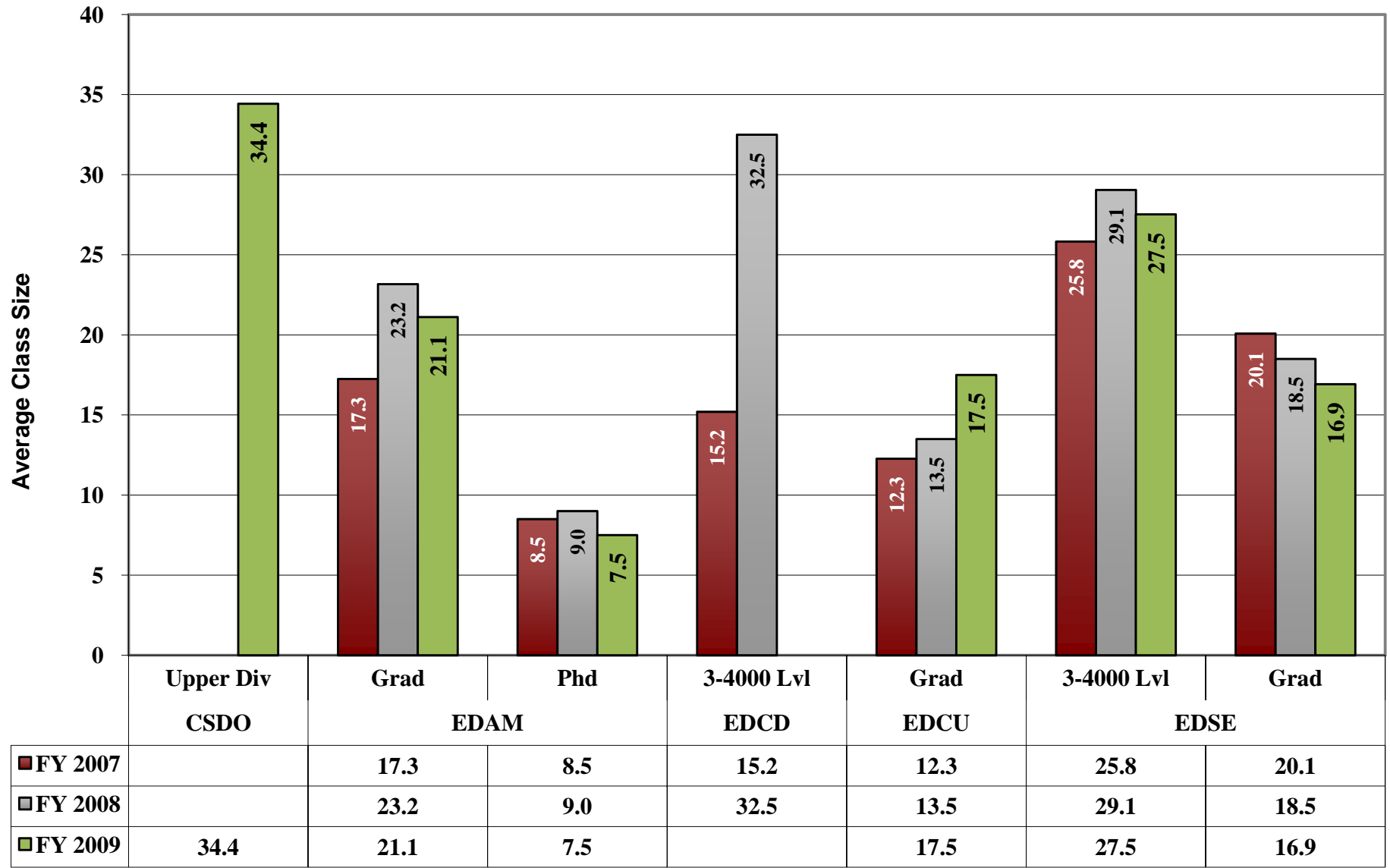


	TCHP Sch	Lower Div Courses	Upper Div Courses	Graduate Courses
FY 2007	3,423	1,635	1,737	51
FY 2008	3,949	2,056	1,779	114
FY 2009	4,214	2,489	1,647	78

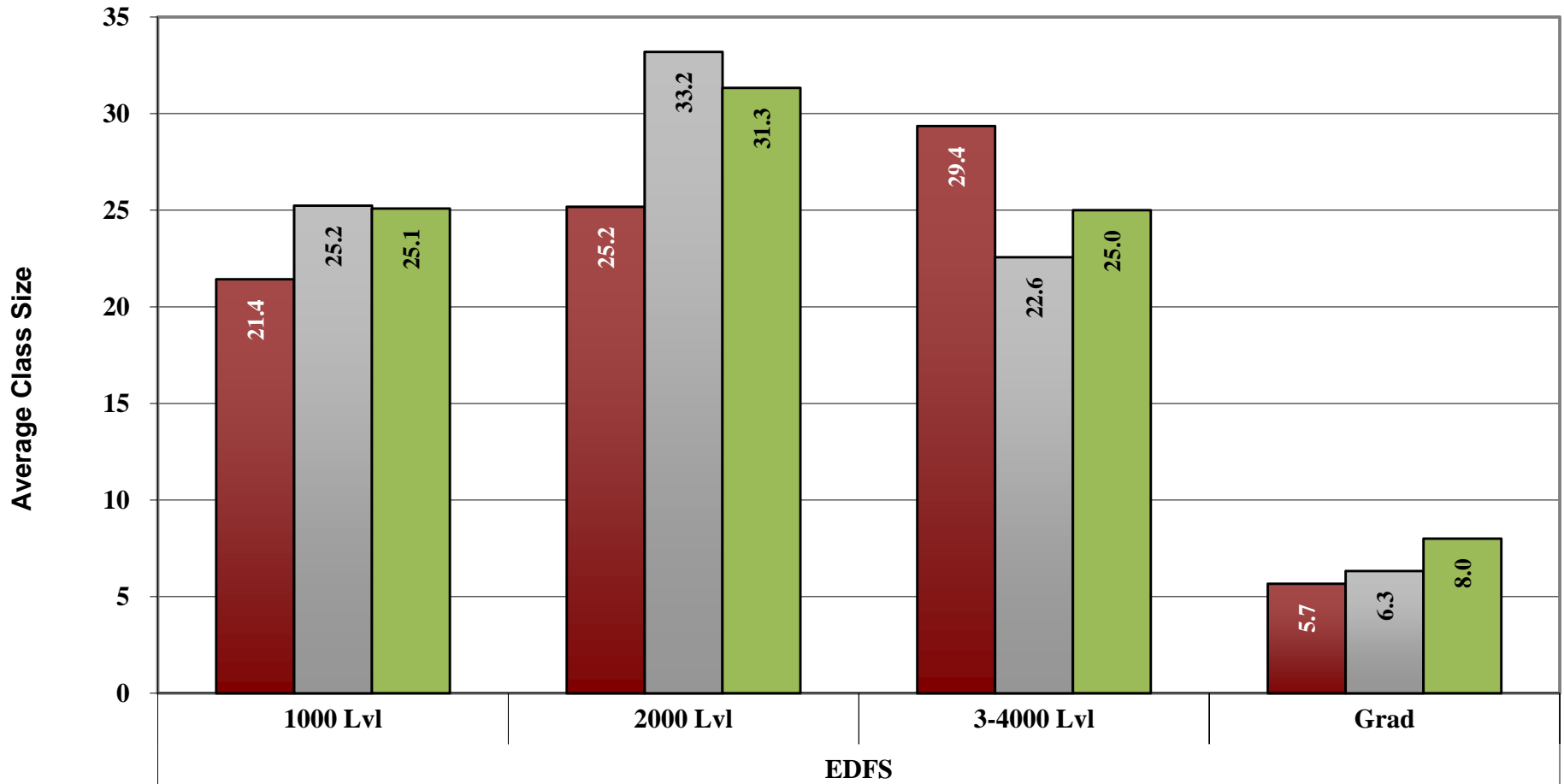
Average Class Size - Dept: CI



Average Class Size - Dept: PPRO

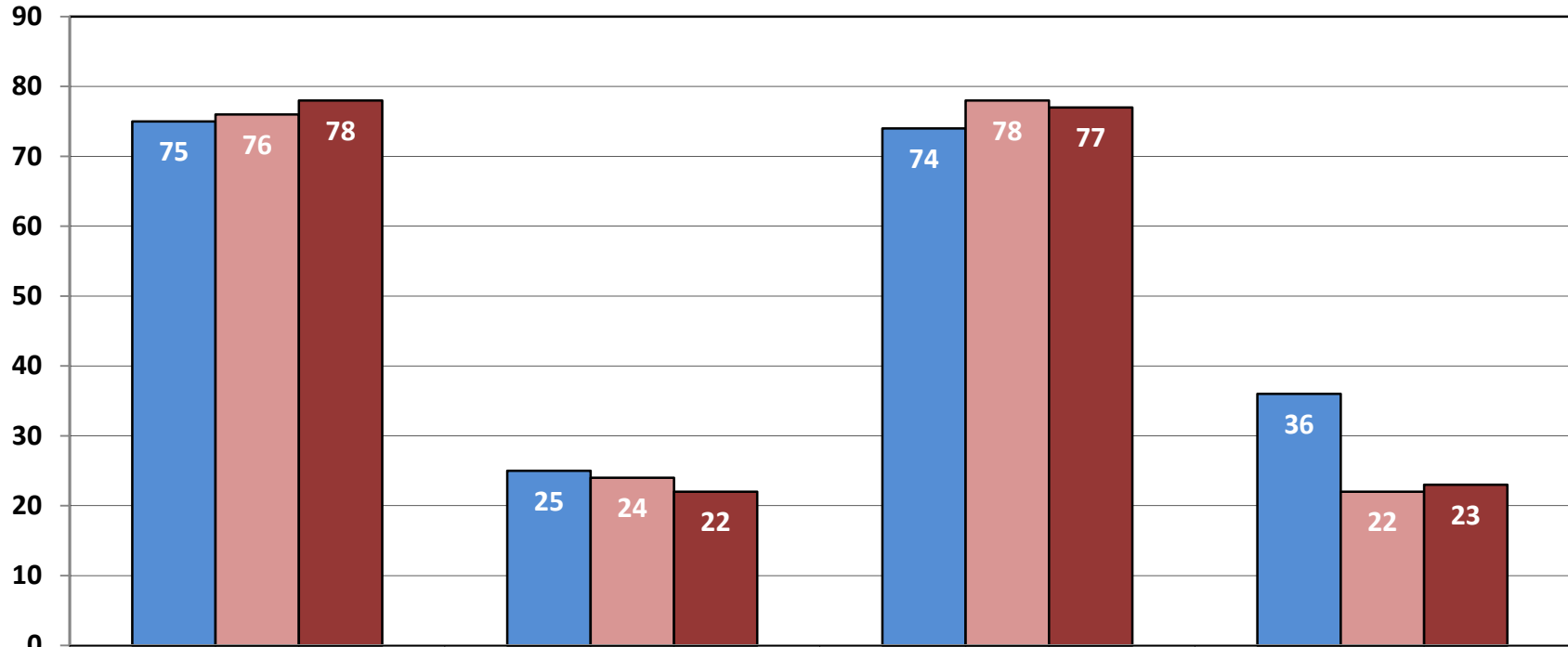


Average Class Size - Dept: TCHP



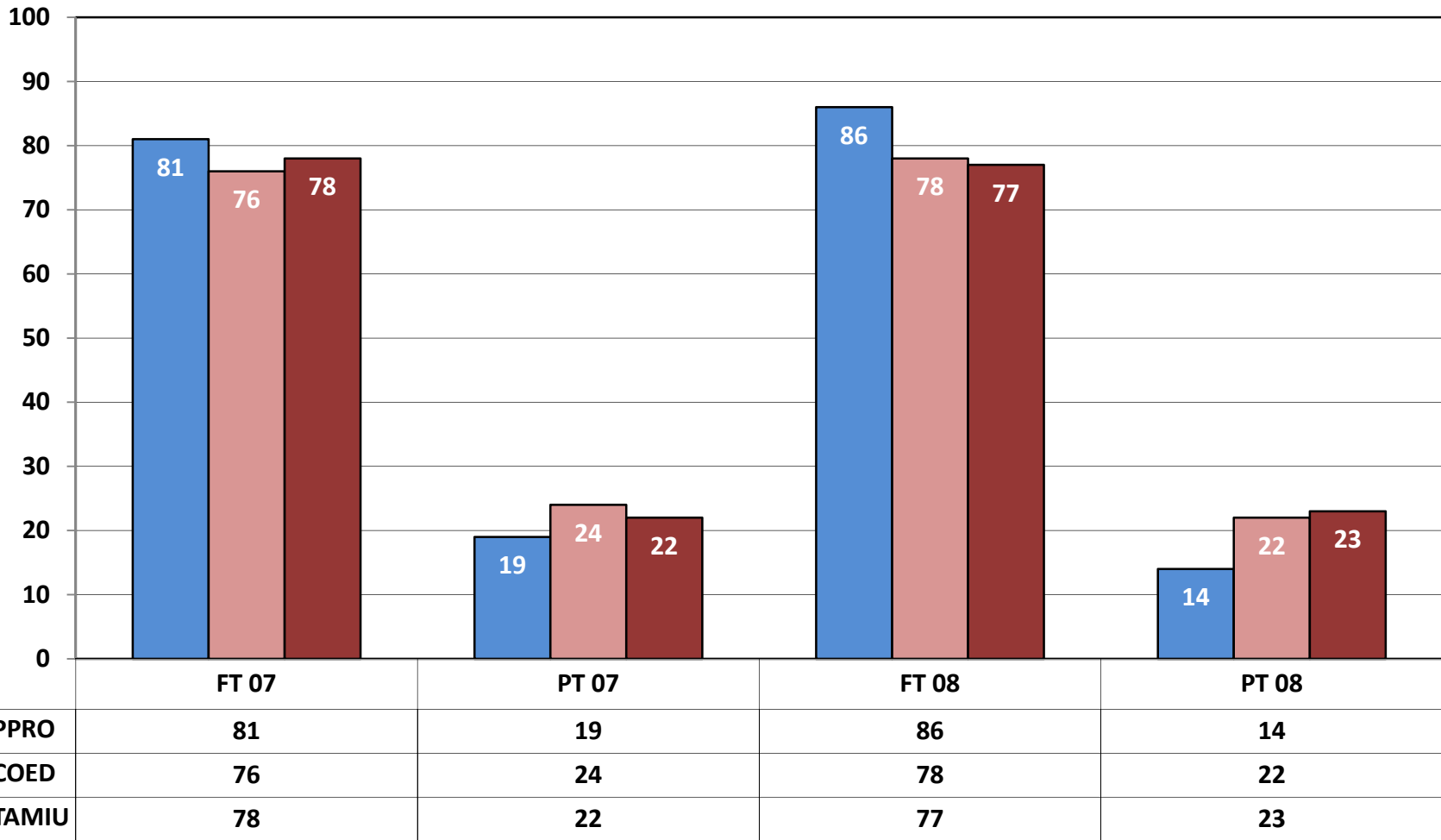
FY 2007	21.4	25.2	29.4	5.7
FY 2008	25.2	33.2	22.6	6.3
FY 2009	25.1	31.3	25.0	8.0

FY 07-08 Percent of SCH by Full/Part Time Faculty for CI

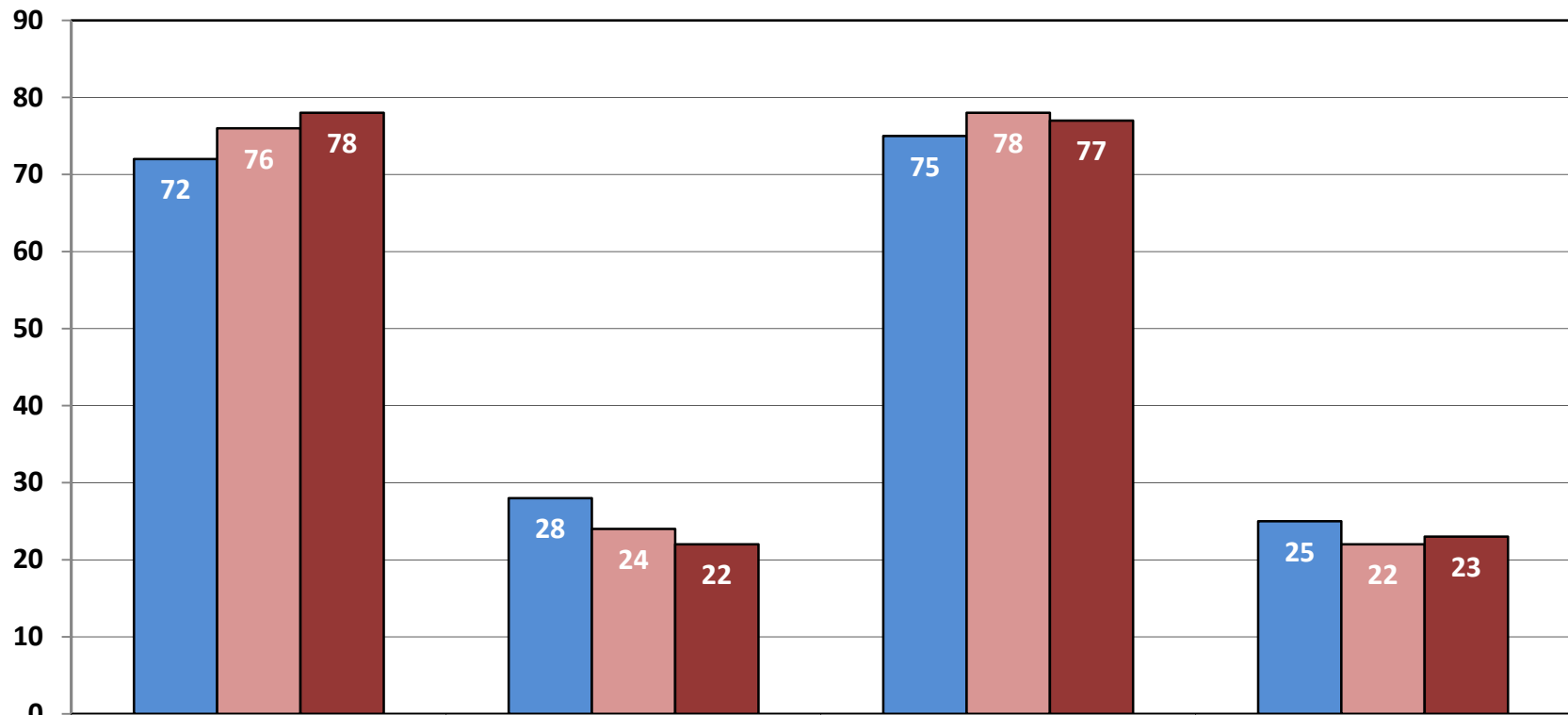


	FT 07	PT 07	FT 08	PT 08
■ CI	75	25	74	36
■ COED	76	24	78	22
■ TAMIU	78	22	77	23

FY 07-08 Percent of SCH by Full/Part Time Faculty for PPRO



FY 07-08 Percent of SCH by Full/Part Time Faculty for TCHP

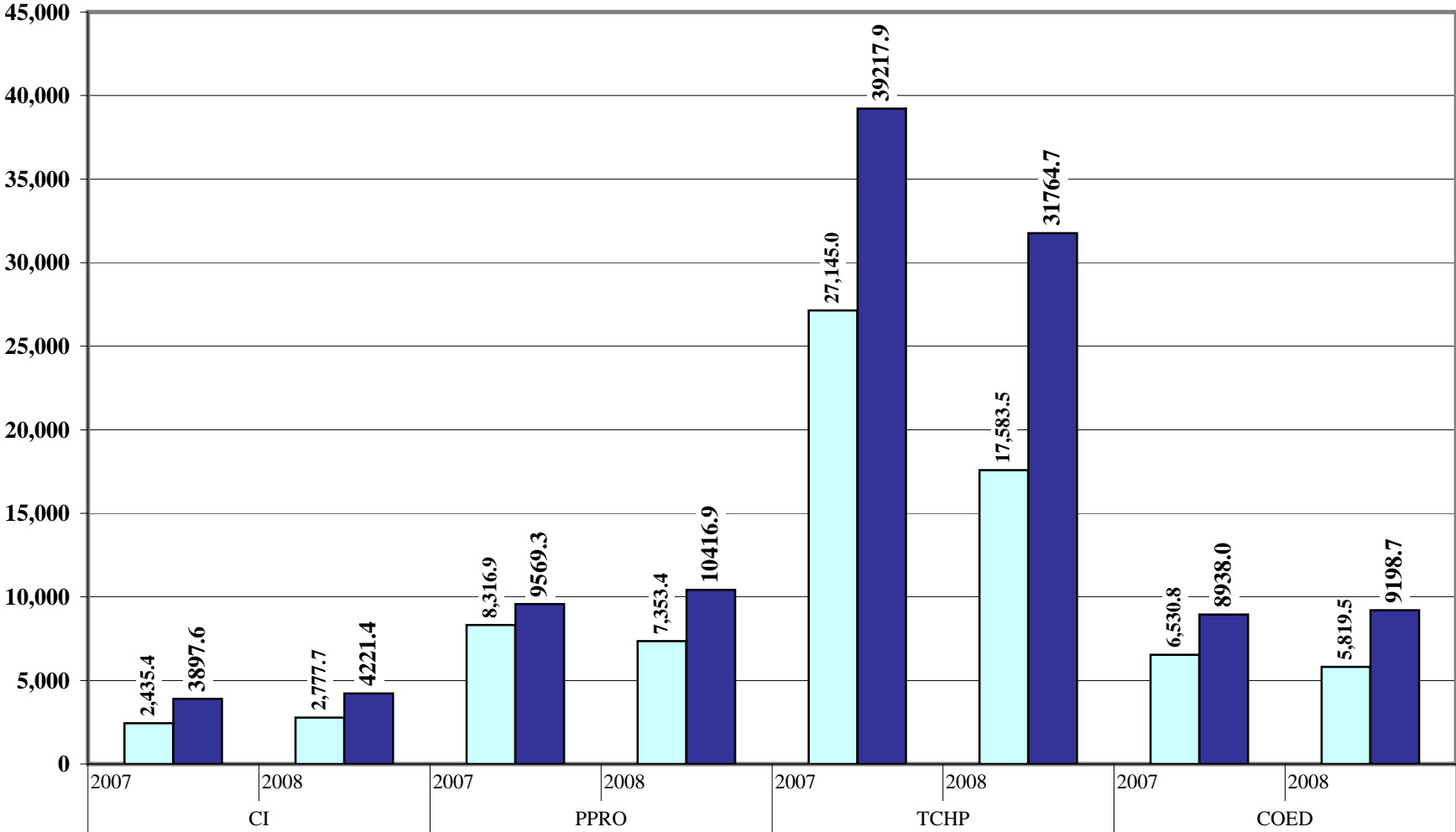


	FT 07	PT 07	FT 08	PT 08
TCHP	72	28	75	25
COED	76	24	78	22
TAMIU	78	22	77	23

Faculty Salary and SCH Generated
WebFocus: IR_COST-REIMBURSEMENT-FY as of 01/14/09

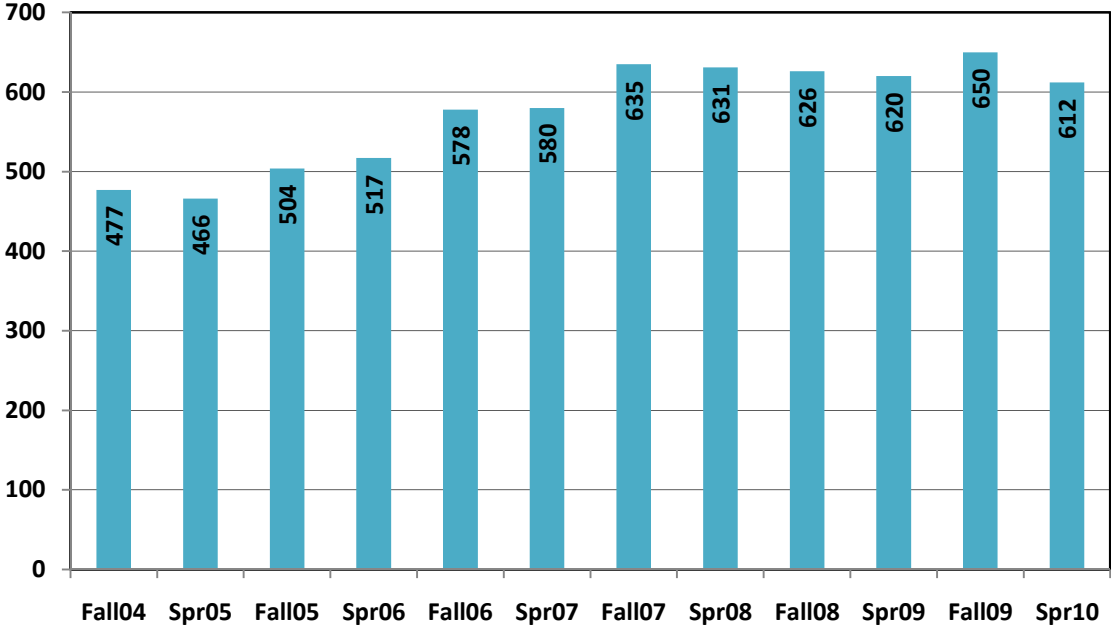
		FY 2007						FY 2008					
Col	Dept	Degrees	Salary(Cost)	Cost per Degr	\$ Gen	Reimburs per Degr	Dif from Salary	Degrees	Salary(Cost)	Cost per Degr	\$ Gen	Reimburs per Degr	Dif from Salary
AS	BACJ	143	1,124,133.32	7,861.07	1,439,155.59	10,064.03	315,022.27	125	944,479.25	7,555.83	1,508,359.28	12,066.87	563,880.03
	BC	35	821,699.75	23,477.14	1,031,841.12	29,481.17	210,141.37	33	900,974.50	27,302.26	1,197,116.59	36,276.26	296,142.09
	FPA	17	736,064.00	43,297.88	553,518.35	32,559.90	-182,545.65	26	648,950.48	24,959.63	548,452.98	21,094.35	-100,497.50
	LL	39	1,197,861.70	30,714.40	1,077,309.45	27,623.32	-120,552.25	47	1,063,950.36	22,637.24	1,219,009.32	25,936.37	155,058.96
	MPHS	17	782,939.00	46,055.24	613,580.26	36,092.96	-169,358.74	24	734,340.75	30,597.53	687,623.12	28,650.96	-46,717.63
	SSC	49	896,376.75	18,293.40	1,133,668.44	23,136.09	237,291.69	51	820,250.45	16,083.34	1,146,536.40	22,481.11	326,285.95
*TOTAL AS		300.00	5,559,074.52	18,530.25	5,849,073.21	19,496.91	289,998.69	306.00	5,112,945.79	16,708.97	6,307,097.69	20,611.43	1,194,151.90
BA	IBFS	81	1,216,600.92	15,019.76	1,400,843.13	17,294.36	184,242.21	97	961,235.00	9,909.64	1,653,843.06	17,049.93	692,608.06
	IBTS	218	1,260,185.25	5,780.67	1,462,287.96	6,707.74	202,102.71	231	1,022,997.00	4,428.56	1,724,085.24	7,463.57	701,088.24
	*TOTAL BA		299.00	2,476,786.17	8,283.57	2,863,131.09	9,575.69	386,344.92	328.00	1,984,232.00	6,049.49	3,377,928.30	10,298.56
ED	CI	192	467,605.00	2,435.44	748,348.25	3,897.65	280,743.25	191	530,546.25	2,777.73	806,283.30	4,221.38	275,737.05
	PPRO	94	781,791.00	8,316.93	899,515.93	9,569.32	117,724.93	95	698,571.73	7,353.39	989,602.32	10,416.87	291,030.59
	TCHP	30	814,349.00	27,144.97	1,176,536.75	39,217.89	362,187.75	37	650,590.69	17,583.53	1,175,294.22	31,764.71	524,703.53
	*TOTAL ED		316.00	2,063,745.00	6,530.84	2,824,400.93	8,937.98	760,655.93	323.00	1,879,708.67	5,819.53	2,971,179.84	9,198.70
GU	DEVS		201,539.00		143,924.76		-57,614.24		284,887.04		150,855.12		-134,031.92
*TOTAL GU			201,539.00		143,924.76		-57,614.24		284,887.04		150,855.12		-134,031.92
NH	NURS	57	674,362.50	11,830.92	1,062,330.89	18,637.38	387,968.39	64	607,214.81	9,487.73	748,250.60	11,691.42	141,035.79
*TOTAL NH		57.00	674,362.50	11,830.92	1,062,330.89	18,637.38	387,968.39	64.00	607,214.81	9,487.73	748,250.60	11,691.42	141,035.79
TOTAL			10,975,507.19		12,742,860.88		1,767,353.69		9,868,988.31		13,555,311.55		3,686,323.24

Cost vs Reimbursement per Degree - COED

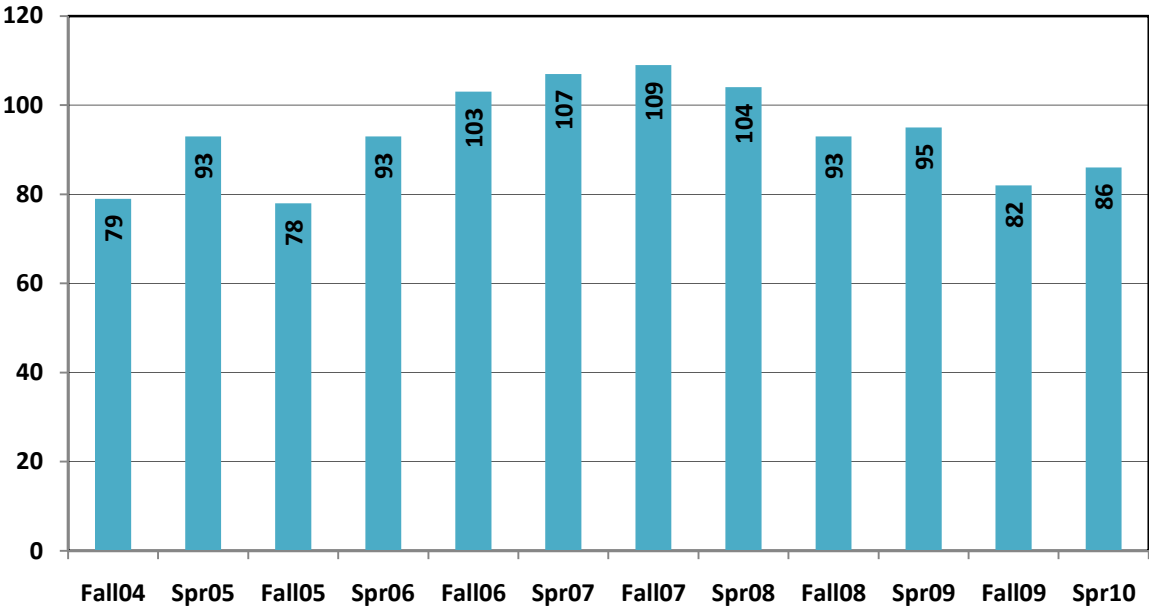


Cost per Degr	2435.4	2777.7	8316.9	7353.4	27145.0	17583.5	6530.8	5819.5
Reimburs per Degr	3897.6	4221.4	9569.3	10416.9	39217.9	31764.7	8938.0	9198.7

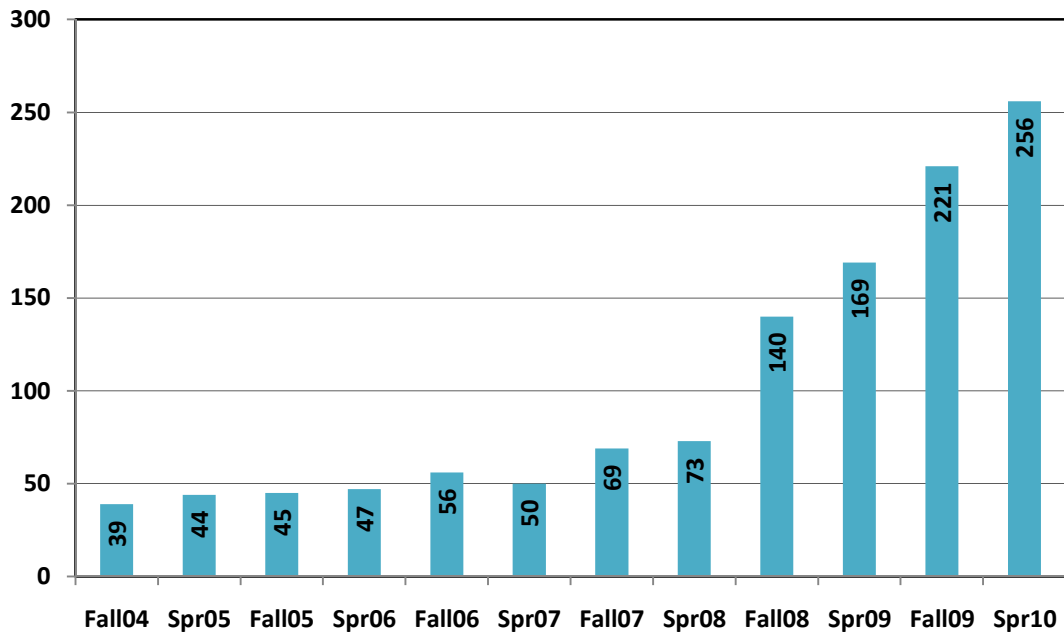
Undergraduate Majors for CI



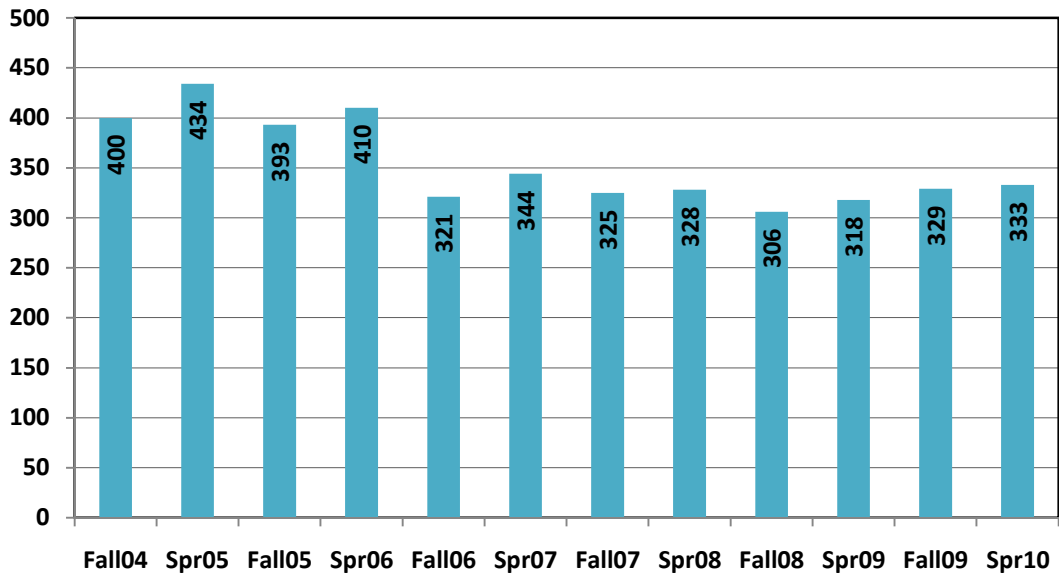
Graduate Majors for CI



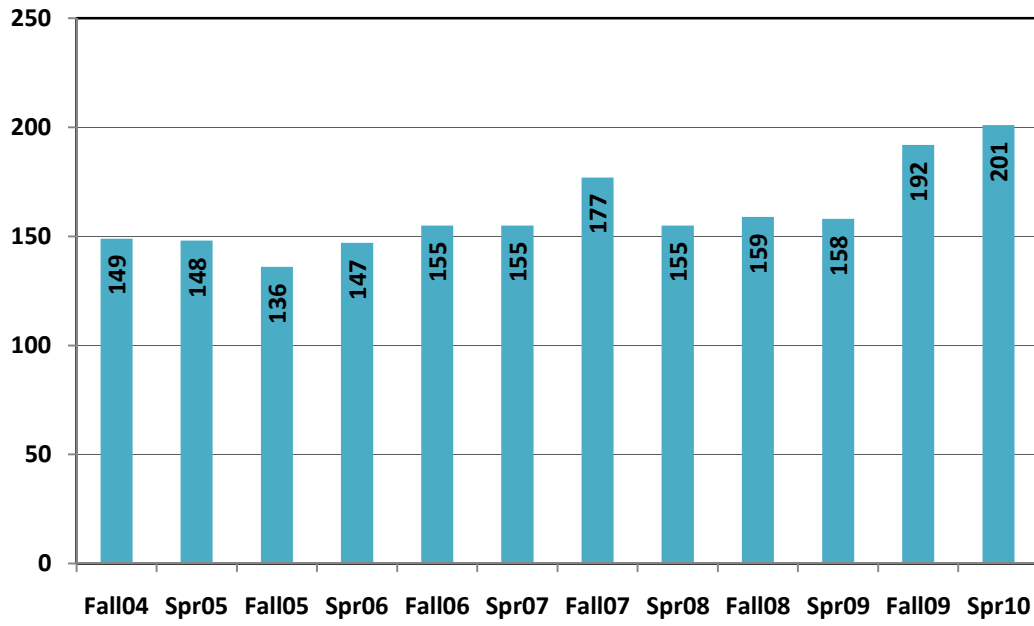
Undergraduate Majors for PPRO



Graduate Majors for PPRO



Undergraduate Majors for TCHP



ENROLLMENT BY MAJOR - UNDERGRADUATE

FOC: IR_ENROLLMENT_BY_MAJOR

UNDERGRADUATE

ARTS&SCIENCES	DEPT	F05	SP06	F06	SP07	F07	SP08	F08	SP09	F09	SP10
PSYCHOLOGY	BACJ	203	201	207	190	210	220	243	261	301	288
SOCIOLOGY	BACJ	28	26	29	29	27	30	33	34	34	41
CRIMINAL JUSTICE	BACJ	268	289	325	295	303	293	326	301	347	382
SOCIAL WORK	BACJ	37	42	37	37	28	28	21	20	11	9
		536	558	598	551	568	571	623	616	693	720
BIOLOGY	BC	194	188	194	170	203	192	257	270	342	313
CHEMISTRY	BC	27	20	22	22	20	18	30	18	22	19
ENVIRONMENTAL SCIENCE	BC		2	5	8	7	8	9	9	15	14
SCIENCE	BC	12	17	11	8	7	7	6	6	15	8
		233	227	232	208	237	225	302	303	394	354
ART	FPA	40	50	57	57	60	58	58	53	55	65
MUSIC	FPA	59	55	67	62	61	57	66	60	70	67
		99	105	124	119	121	115	124	113	125	132
COMMUNICATION	LL	58	63	76	74	85	81	89	90	101	111
ENGLISH	LL	45	39	55	77	70	75	90	86	98	97
ENGLISH LA&READING	LL	43	41	25	13	19	18	12	11	11	8
ENGLISH SOCIAL STUDIES	LL	3		1	1	1	2	2	2	2	2
SPANISH	LL	40	44	41	44	41	37	39	36	51	55
		189	187	198	209	216	213	232	225	263	273
MATHEMATICS	MPHS	101	87	92	91	106	94	89	90	123	120
PHYSICAL SCIENCE	MPHS	52	46	58	56	63	48	59	33	34	27
PRE-ENGINEERING	MPHS								20	33	47
SYSTEMS ENGINEERING	MPHS							5	11	21	28
		153	133	150	147	169	142	153	154	211	222
COMPOSITE (BAAS)	SSC	46	37	40	37	35	26	37	42	45	37
HISTORY	SSC	37	36	56	58	60	65	56	63	65	74
LATIN AMERICAN STUDIES	SSC	2	1	1	2	2	1	1	1		
POLITICAL SCIENCE	SSC	59	64	82	75	75	69	76	75	84	80
SOCIAL STUDIES	SSC	17	24	22	24	36	31	32	36	35	42
URBAN STUDIES	SSC	7	7	6	4	6	7	6	4	2	2
		168	169	207	200	214	199	208	221	231	235
UNDECIDED		211	179	423	375	514	497	1001	730	1043	866
		211	179	423	375	514	497	1001	730	1043	866
SUBTOTAL		1589	1558	1932	1809	2039	1962	2643	2362	2960	2802

ENROLLMENT BY MAJOR - UNDERGRADUATE

		F05	SP06	F06	SP07	F07	SP08	F08	SP09	F09	SP10
BUSINESS											
ACCOUNTING	IBFS	175	177	191	174	185	188	202	189	189	164
FINANCE	IBFS	55	58	63	55	67	69	69	69	72	64
ECONOMICS	IBFS	27	16	18	17	23	22	30	32	32	30
		257	251	272	246	275	279	301	290	293	258
BUSINESS ADMINISTRATION	IBTS	226	212	252	222	272	241	271	226	262	226
MANAGEMENT INFO SYSTEMS	IBTS	134	118	128	113	121	126	120	102	94	77
MANAGEMENT	IBTS	105	119	110	98	109	105	120	104	134	119
MARKETING	IBTS	61	69	76	62	72	57	69	70	68	58
		526	518	566	495	574	529	580	502	558	480
UNDECIDED		33	16	39	31	40	25	23	23	28	27
		33	16	39	31	40	25	23	23	28	27
SUBTOTAL		816	785	877	772	889	833	904	815	879	765

		F05	SP06	F06	SP07	F07	SP08	F08	SP09	F09	SP10
EDUCATION											
BIS BILINGUAL EDUCATION	CI	10	9	11	16	43	31	21	19	56	99
BIS EARLY CHILDHOOD	CI	108	92	128	122	133	134	118	107	129	109
BIS EARLY CHILDHOOD-BIL	CI	321	325	348	357	389	401	441	458	435	368
BIS EARLY CHILDHOOD-RDG	CI	65	91	91	85	70	65	46	36	30	36
		504	517	578	580	635	631	626	620	650	612
BIS SPECIAL EDUCATION	PPRO	45	47	56	50	69	72	73	72	70	75
BS COMM DISORDERS	PPRO						1	67	97	151	181
		45	47	56	50	69	73	140	169	221	256
BS FITNESS NON CERTIFICATE	TCHP	22	21	33	30	45	50	50	57	63	62
BS FITNESS&SPORTS	TCHP	114	126	122	125	132	105	109	101	129	139
		136	147	155	155	177	155	159	158	192	201
UNDECIDED		5	1	6	6	19	12	21	9	14	10
		5	1	6	6	19	12	21	9	14	10
SUBTOTAL		690	712	795	791	900	871	946	956	1077	1079

		F05	SP06	F06	SP07	F07	SP08	F08	SP09	F09	SP10
SCHOOL OF NURSING											
NURSING	NURS	239	247	276	271	294	291	304	320	397	378
UNDECIDED								1		2	
SUBTOTAL		239	247	276	271	294	291	305	320	399	378

TOTAL UNDERGRAD		3334	3302	3880	3643	4122	3957	4798	4453	5315	5024
------------------------	--	-------------	-------------	-------------	-------------	-------------	-------------	-------------	-------------	-------------	-------------

ENROLLMENT BY MAJOR - GRADUATE

		F05	SP06	F06	SP07	F07	SP08	F08	SP09	F09	SP10
ARTS&HUMANITIES											
COUNSELING PSYCH	BACJ	28	31	34	39	36	30	30	31	37	40
SOCIOLOGY	BACJ	17	14	14	12	6	9	13	15	18	20
CRIMINAL JUSTICE	BACJ	33	43	41	30	30	38	27	33	38	37
PSYCHOLOGY	BACJ			4	7	10	10	3	4	8	10
		78	88	93	88	82	87	73	83	101	107
BIOLOGY	BC	9	9	14	16	18	17	13	14	15	23
		9	9	14	16	18	17	13	14	15	23
ENGLISH	LL	7	7	10	7	14	17	20	23	32	27
SPANISH	LL	6	7	11	10	7	4	10	13	20	21
		13	14	21	17	21	21	30	36	52	48
MATHEMATICS	MPHS	1	2	4	3	6	8	8	4	11	15
		1	2	4	3	6	8	8	4	11	15
HISTORY	SSC	5	7	5	7	8	5	6	13	12	7
INTERDISCIPLINARY STUDIES	SSC			3	2	8	9	3	3	1	
POLITICAL SCIENCE	SSC	10	8	6	6	3	5	2	6	7	7
PUBLIC ADMINISTRATION	SSC	45	47	50	53	60	52	50	52	43	39
		60	62	64	68	79	71	61	74	63	53
UNDECIDED		17	33	37	40	21	38	24	21	17	11
		17	35	37	40	21	38	24	21	17	11
SUBTOTAL		178	210	233	232	227	242	209	232	259	257

		F05	SP06	F06	SP07	F07	SP08	F08	SP09	F09	SP10
BUSINESS											
ACCOUNTING	IBFS			7	4	8	7	10	14	16	16
FINANCE	IBFS	6	7	3	3	9	5	11	14	11	9
INTERNATIONAL BANKING	IBFS	14	11	6	6	4	5	5	6	4	5
INTERNATIONAL TRADE	IBFS	13	10	7	8	13	15	12	15	10	9
PROF ACCOUNTANCY	IBFS	25	31	22	23	25	33	31	34	42	49
		58	59	45	44	59	65	69	83	83	88
BUSINESS ADMIN	IBTS	53	33	23	13	10	8	11	25	23	7
INFORMATION SYSTEMS	IBTS	44	49	58	66	74	61	73	61	75	47
INTERNATIONAL BUSINESS	IBTS	44	51	78	90	90	90	88	99	93	108
INTERNATIONAL BUS ADMIN	IBTS	13	13	16	15	15	15	20	21	25	21
INTERNATIONAL LOGISTICS	IBTS							2	2	3	5
MANAGEMENT	IBTS	24	28	20	24	23	31	30	48	60	67
MARKETING	IBTS			4	6	3	2	4	5	8	12
		178	174	199	214	215	207	228	261	287	267
UNDECIDED		33	30	36	32	63	51	62	23	14	3
		33	30	36	32	63	51	62	23	14	3
SUBTOTAL		269	263	280	290	337	323	359	367	384	358

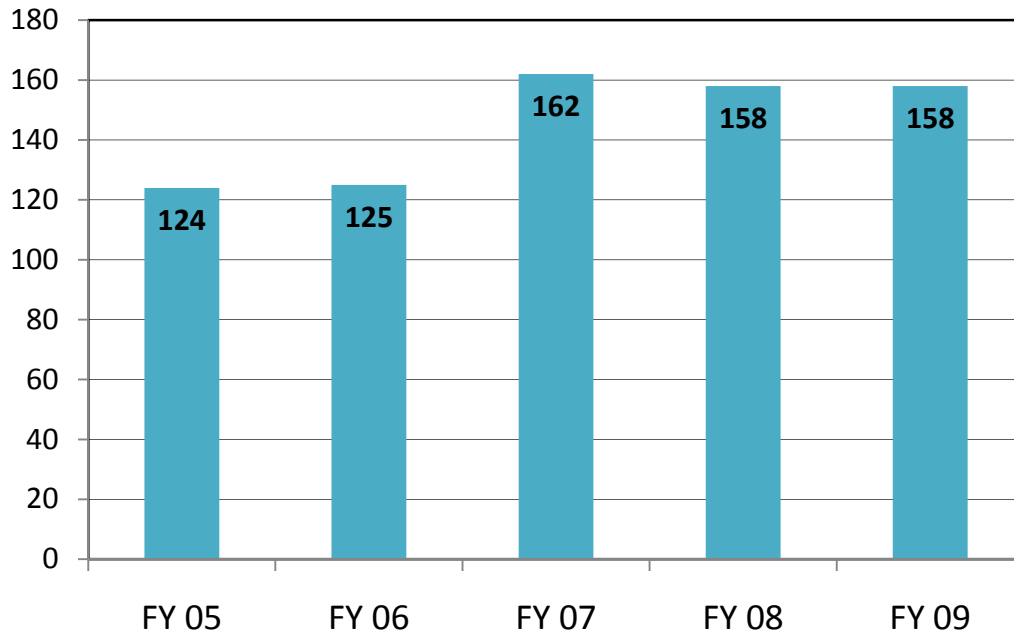
ENROLLMENT BY MAJOR - GRADUATE

EDUCATION		F05	SP06	F06	SP07	F07	SP08	F08	SP09	F09	SP10
CURRICULUM&INSTRUCTION	CI	22	29	37	36	55	49	48	57	43	45
BILINGUAL EDUCATION	CI	26	30	26	27	21	22	19	15	16	23
EARLY CHILDHOOD ED	CI	10	9	7	7	6	5	2	3	5	3
READING	CI	20	25	33	37	27	28	24	20	18	15
		78	93	103	107	109	104	93	95	82	86
GENERIC SPECIAL ED	PPRO	52	58	41	54	42	41	34	34	45	46
SCHOOL COUNSELING	PPRO	62	68	56	51	51	50	64	64	65	68
ADMIN-MIDMANAGEMT	PPRO	126	141	97	125	142	139	137	125	101	95
SUPERINTENDENCY	PPRO	8	12								4
CERTIFICATION	PPRO	145	131	127	114	90	98	71	95	118	120
COUNSELING&GUIDANCE	PPRO										
EDUC DIAGNOSTICIAN	PPRO										
		393	410	321	344	325	328	306	318	329	333
SPECIAL NON-DEGREE		20	75	71	59	49	56	65	62	20	22
		20	75	71	59	49	56	65	62	20	22
SUBTOTAL		491	578	495	510	483	488	464	475	431	441
SCHOOL OF NURSING		F05	SP06	F06	SP07	F07	SP08	F08	SP09	F09	SP10
NURSING	NURS	26	26	24	7	20	14	30	31	30	12
NON-DEGREE/UNDECIDED											
SUBTOTAL		26	26	24	7	20	14	30	31	30	12
TOTAL GRADS		964	1077	1032	1039	1067	1067	1062	1105	1104	1068
UNDERGRADUATES		3334	3302	3880	3643	4122	3957	4798	4453	5315	5024
GRADUATES		964	1077	1032	1039	1067	1067	1062	1105	1104	1068
TOTAL		4298	4379	4912	4682	5189	5024	5860	5558	6419	6092

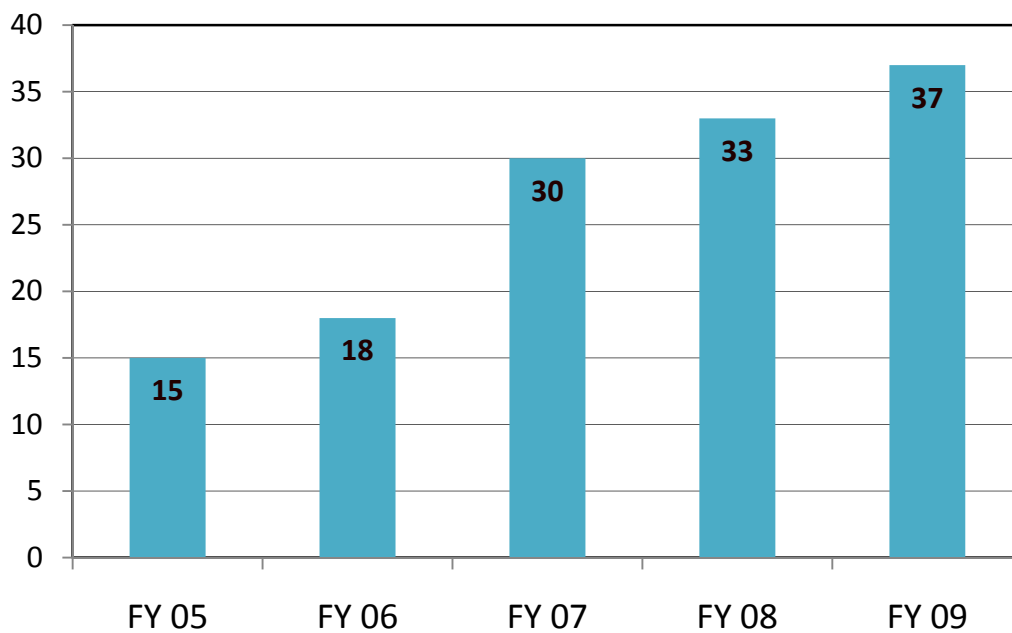
4/1/2010 11:27

Note: Data broken down by concentrations beginning Fall 2007 and updated 11/08.

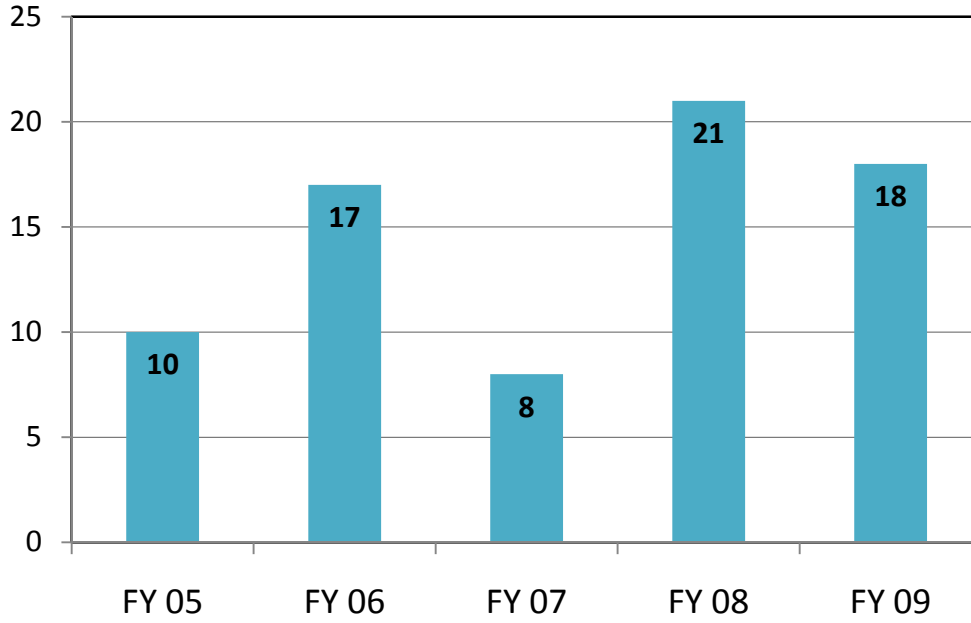
Bachelor Degrees for CI



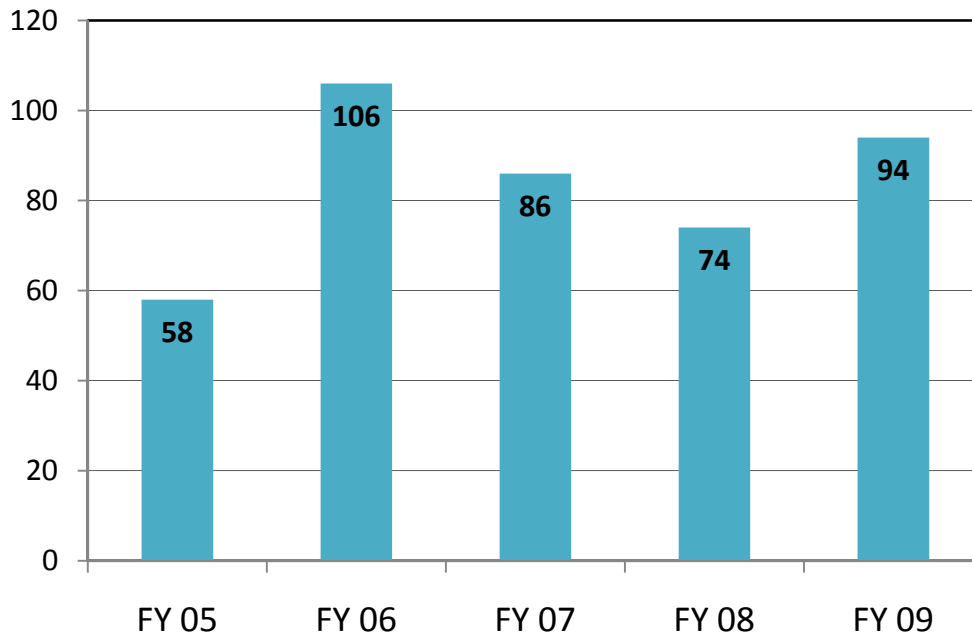
Master's Degrees for CI



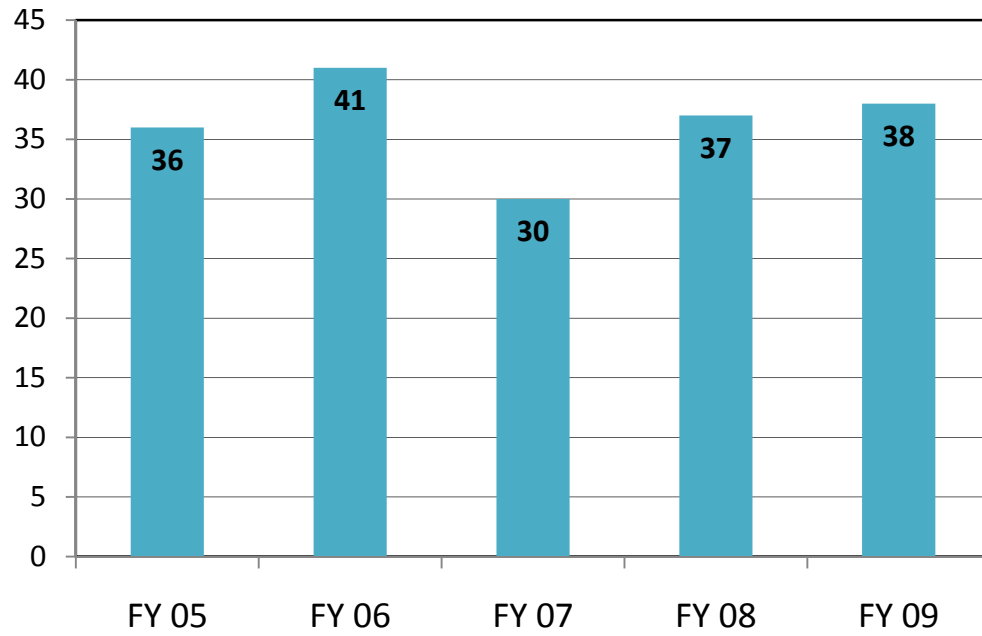
Bachelor Degrees for PPRO



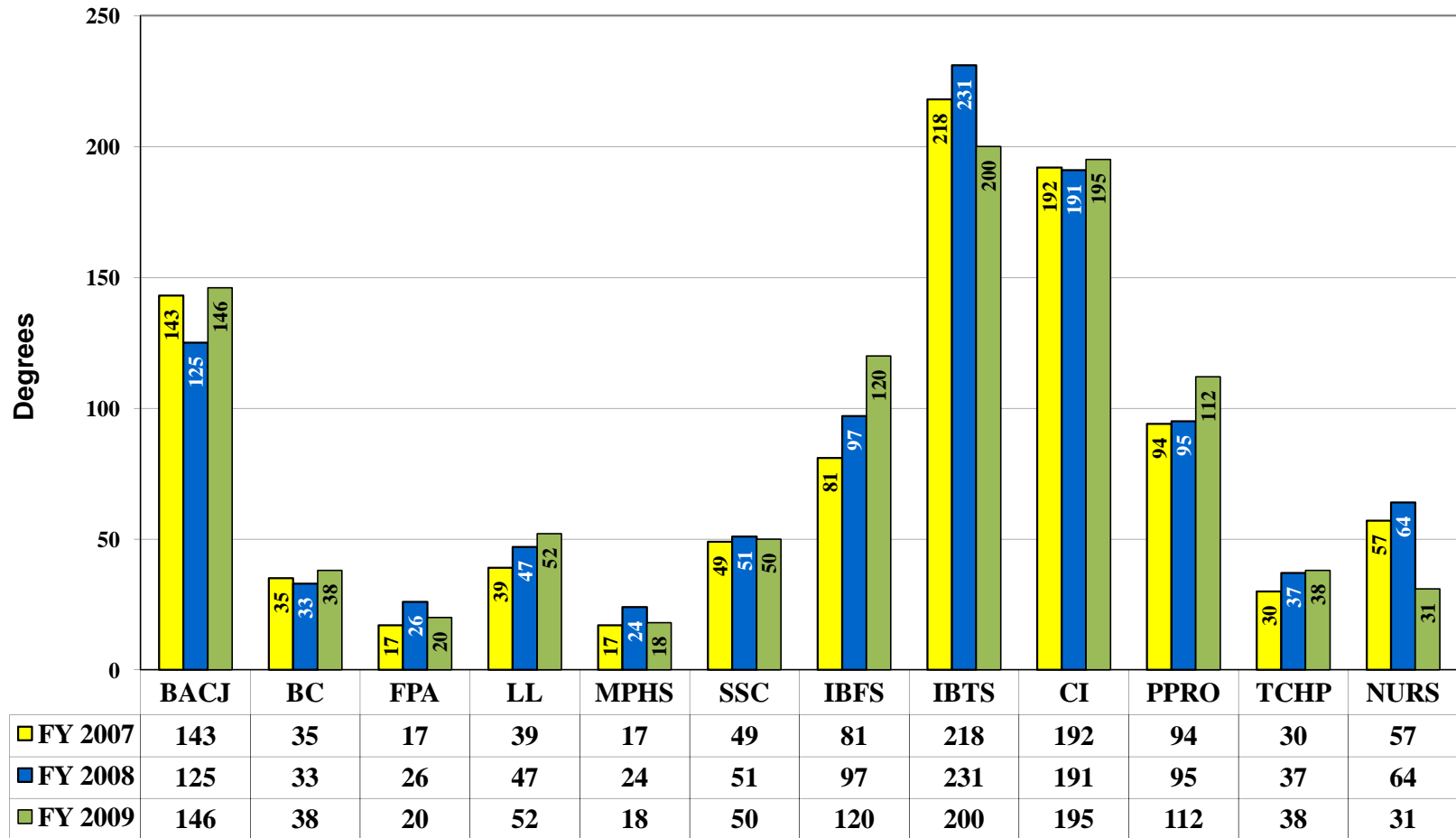
Master's Degrees for PPRO



Bachelor Degrees for TCHP



Total Degrees Awarded FY 2007-FY 2009



TEXAS A&M INTERNATIONAL UNIVERSITY GRADUATES BY DEPARTMENT BY COLLEGE BY LEVEL

CIP	UNDERGRADUATE DEGREES	Dept	AY				AY				AY				AY				5 YR	TTL			
			DEC 2005	MAY 2006	AUG 2006	TTL	DEC 2006	MAY 2007	AUG 2007	TTL	DEC 2007	MAY 2008	AUG 2008	TTL	DEC 2008	MAY 2009	AUG 2009	TTL			DEC 2009	MAY 2010	AUG 2010
42010100	BA PSYCHOLOGY	BACJ	16	22	6	44	23	24	5	52	15	17	3	35	18	21	9	48	28			28	179
45110100	BA SOCIOLOGY	BACJ	2	1	2	5	2	3		5	4	3		7	3	4	1	8	6			6	25
43010700	BS CRIMINAL JUSTICE	BACJ	15	29	4	48	22	27	6	55	20	20	10	50	26	30	7	63	16			16	216
44070100	BS SOCIAL WORK	BACJ	2	10		12	1	11		12	1	8		9	1	7		8	1			1	41
			35	62	12	109	48	65	11	124	40	48	13	101	48	62	17	127	51	0	0	51	
26010100	BA BIOLOGY	BC	2	2	1	5	2	4		6	4	3	1	8	1	4		5				0	24
26010100	BS BIOLOGY	BC	4	14		18	8	15		23	7	14		21	4	15	5	24	6			6	86
40050100	BS CHEMISTRY	BC	1	5		6			2	2						1		1	1			0	9
03010400	BS ENV SCIENCE	BC															3	3				0	3
30999901	BS SCIENCE	BC	1	3		4	3	1		4					2	1		3				0	11
30999901	BSIS SCIENCE	BC				0						1		1			1	1				0	2
			8	24	1	33	13	20	2	35	11	18	1	30	7	21	9	37	7	0	0	7	
50070200	BA ART	FPA		2		2	5	6		11	6	4	2	12	5	6		11	4			4	36
50090100	BA MUSIC	FPA	1	1		2				2	1			1	1			1				0	4
50090100	BM MUSIC	FPA	2			2	2	1	3	6	3	9	1	13	3	5		8	6			6	29
			3	3		6	7	7	3	17	10	13	3	26	9	11		20	10	0		10	
09010100	BA COMMUNICATION	LL	2	1	1	4	3	5		8	4	8	1	13	3	15		18	7			7	43
23010100	BA ENGLISH	LL	8	2	1	11	4	12	1	17	7	6	1	14	9	8	1	18	10			10	60
23010100	BA ENGLISH, L ARTS, RDG	LL	5	6	1	12		1		1	1			1	3	2	1	6				0	20
23010100	BA ENGLISH, L ARTS, SST	LL							1	1												1	1
16090500	BA SPANISH	LL	3	5	2	10	1	6	2	9	4	4	2	10	4	4	1	9	1			1	38
30999901	BSIS ENGLISH, L ARTS, RDG	LL										2	1	3									3
			18	14	5	37	8	24	4	36	16	20	5	41	19	29	3	51	18	0	0	18	
27010100	BA MATHEMATICS	MPHS	4	5		9	3	6	1	10	4	9	1	14	4	6	1	11	7			7	44
40010100	BA PHYS SCIENCE	MPHS									1			1									1
27010100	BS MATHEMATICS	MPHS	6	5	2	13	3	3		6	3	1		4		1		1				0	24
30999901	BSIS MATHEMATICS	MPHS							1	1		4	1	5	3	2		5				0	11
14270100	BS SYSTEMS ENGR																						
			10	10	2	22	6	9	2	17	8	14	2	24	7	9	1	17	7	0	0	7	
54010100	BA HISTORY	SSC		2		2	1	4	1	6	4	6	3	13	3	7		10	3			3	31
05010700	BA LATIN AMER STUDIES	SSC	1			1										1		1				0	2
45120100	BA PLANG&ADMIN	SSC	2	1		3	2			2		1		1									6
45100100	BA POLITICAL SCIENCE	SSC	5	4		9	12	4	3	19	8	3	3	14	4	7	1	12	5			5	54
45010100	BA SOCIAL STUDIES	SSC																					0
30999940	BAAS APPLIED ARTS&SCI	SSC	8	6	1	15	5	3	1	9	4	1		5	2	4		6				0	35
45010100	BS SOCIAL STUDIES	SSC														1		1	2			2	1
30999901	BSIS SOCIAL STUDIES	SSC		2		2	1	1		2	2	2	1	5	2	1		3				0	12
			16	15	1	32	21	12	5	38	18	13	7	38	11	20	2	33	10	0	0	10	
TOTALS COAS			90	128	21	103	137	27		103	126	31		101	152	32		103	0	0			

TEXAS A&M INTERNATIONAL UNIVERSITY GRADUATES BY DEPARTMENT BY COLLEGE BY LEVEL

UNDERGRADUATE DEGREES		Dept	DEC	MAY	AUG	AY	DEC	MAY	AUG	AY	DEC	MAY	AUG	AY	DEC	MAY	AUG	AY	DEC	MAY	AUG	AY	
			2005	2006	2006	TTL	2006	2007	2007	TTL	2007	2008	2008	TTL	2008	2009	2009	TTL	2009	2010	2010	TTL	
52030100	BBA ACCOUNTING	IBFS	25	16		41	16	23	2	41	11	23	8	42	19	27	4	50	26			26	174
52080100	BBA FINANCE	IBFS	3	6	2	11	9	5	3	17	8	8	5	21	15	8	4	27	14			14	76
52060100	BBA INTERNTL ECONOMICS	IBFS	4	3		7	1	1		2	1	1	1	3	1	5		6	4			4	18
			32	25	2	59	26	29	5	60	20	32	14	66	35	40	8	83	44	0	0	44	
52020100	BBA BUSINESS ADMIN	IBTS	12	10	6	28	16	11	5	32	10	12	6	28	9	10	6	25	18			18	113
52120100	BBA COMP/MGT INFO SYS	IBTS	10	11	1	22	8	13	3	24	10	11		21	12	12	2	26	16			16	93
52020100	BBA MANAGEMENT	IBTS	11	20	3	34	25	20	1	46	20	14	2	36	21	17	7	45	23			23	161
52020100	BBA MARKETING	IBTS	8	10	2	20	12	11	1	24	13	5	3	21	6	6	1	13	16			16	78
			41	51	12	104	61	55	10	126	53	42	11	106	48	45	16	109	73	0	0	73	
TOTALS COBA			73	76	14	87	84	15	73	74	25	83	85	24	117	0	0						
30999901	BSIS BILINGUAL GEN	CI	1	1		2	1			1	3	1		4		1	1	2	2			2	9
30999901	BSIS EARLY CHILDHOOD	CI	16	4	10	30	16	68	6	90	12	25	27	64	9	12	4	25	9			9	209
30999901	BSIS ECE BILINGUAL	CI	30	36	17	83	47		13	60	30	44		74	42	52	12	106	45			45	323
30999901	BSIS ECE READING	CI	3	4	3	10	7		4	11	16			16	12	7	6	25	6			6	62
			50	45	30	125	71	68	23	162	61	70	27	158	63	72	23	158	62	0	0	62	
51020100	BS COMM SCIENCES	PPRO											1	1	1	6		7	8			8	8
30999901	BS SPECIAL EDUCATION	PPRO	7	7	3	17	2	4	2	8	11	8	1	20	3	6	2	11	9			9	56
			7	7	3	17	2	4	2	8	11	8	2	21	4	12	2	18	17	0	0	17	
31010110	BS FITNESS&SPORTS	TCHP	12	19	10	41	10	16	4	30	12	20	5	37	18	14	6	38	16			16	146
30999901	BIS INTERDIS STUDIES																						
			12	19	10	41	10	16	4	30	12	20	5	37	18	14	6	38	16	0	0	16	
TOTALS COED			69	71	43	83	88	29	84	98	34	85	98	31	95	0	0						
51160100	BS NURSING	NURS	2	30		32	3	32	8	43	1	46	10	57	2	17	12	31	2			2	163
TOTALS CNHS			2	30	0	32	3	32	8	43	1	46	10	57	2	17	12	31	2	0	0	2	
SUBTOTALS			234	305	78	276	341	79	261	344	100	271	352	99	317	0	0						
ANNUAL BACCALAUREATE SUBTOTALS				617			696			705			722			317							

TEXAS A&M INTERNATIONAL UNIVERSITY GRADUATES BY DEPARTMENT BY COLLEGE BY LEVEL

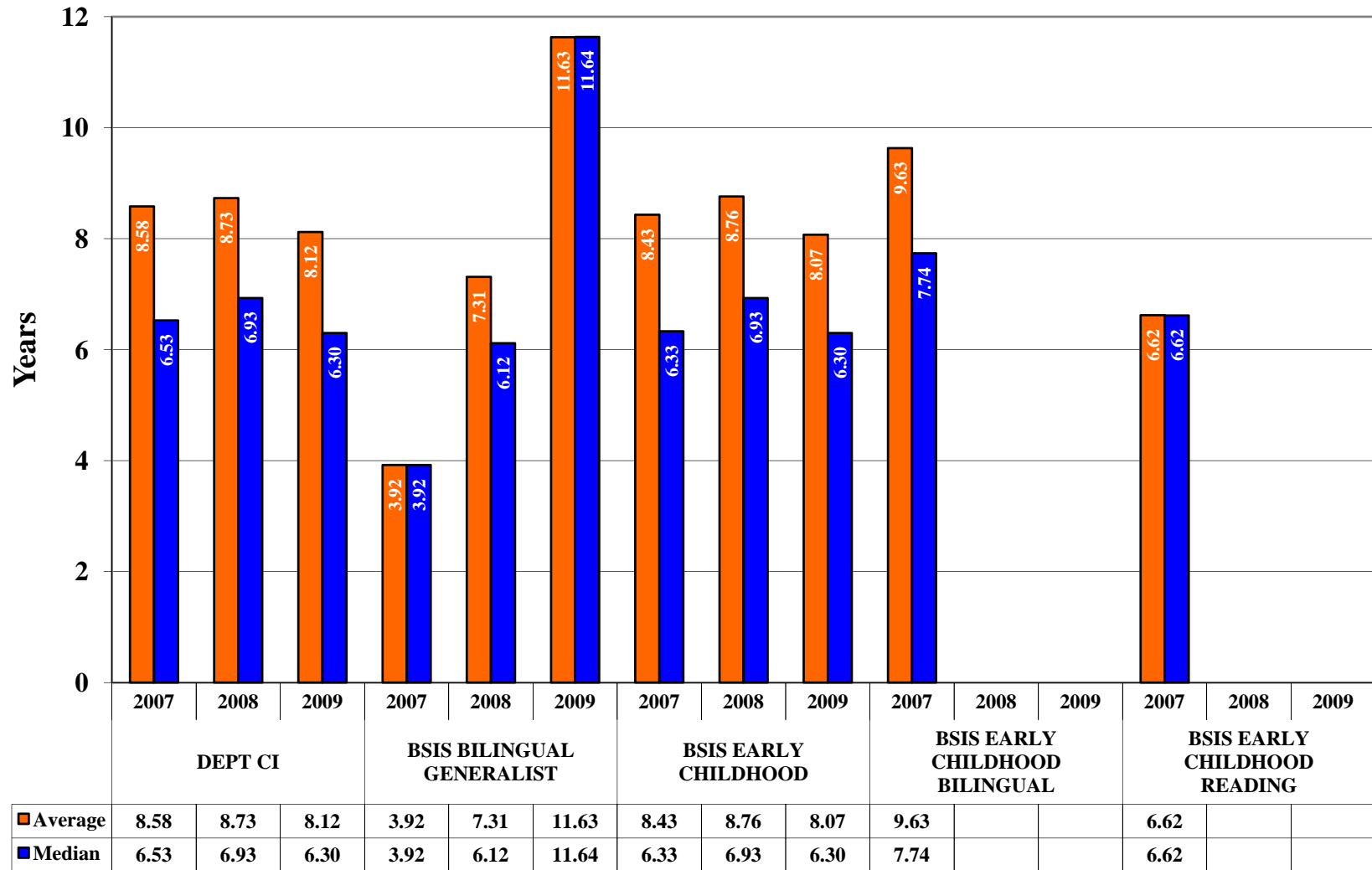
GRADUATE DEGREES

		DEC	MAY	AUG	AY	DEC	MAY	AUG	AY	DEC	MAY	AUG	AY	DEC	MAY	AUG	AY	DEC	MAY	AUG	AY		
		2005	2006	2006	TTL	2006	2007	2007	TTL	2007	2008	2008	TTL	2008	2009	2009	TTL	2009	2010	2010	TTL		
42060100	MA COUNSELING PSY	BACJ		2		2	1	5	3	9	8	5		13	4	6	1	11	2		2	35	
45110100	MA SOCIOLOGY	BACJ		1		1	2	2	1	5	1	1		2		1		1			0	9	
43010300	MS CRIMINAL JUSTICE	BACJ	2	5		7	4	1		5	3	5	1	9	5			5	3		3	26	
42010100	MS PSYCHOLOGY	BACJ			0	0			0	0			0	0	1	1		2			0	2	
			2	8	0	10	7	8	4	19	12	11	1	24	10	8	1	19	5	0	0	5	
26010100	MS BIOLOGY	BC									3			3	1			1			0	4	
											3			3	1			1	0		0		
23010100	MA ENGLISH	LL	2	2		4	1			1		1		1	1			1	3		3	7	
16090500	MA SPANISH	LL			0	0	1	1		2		5		5			0	0		0	0	7	
			2	2	0	4	2	1		3		6		6	1		0	1	3		0	3	
27010100	MS MATHEMATICS	MPHS													1			1			0	1	
															1			1	0		0		
54010100	MA HISTORY	SSC									1			1	2			2	1		1	3	
30999901	MA INTERDIS STUDIES	SSC		1		1	1			1				1	1	2	1	4			0	6	
45100100	MA POLITICAL SCIENCE	SSC	1	1		4	2	2		4		1		1		2		2			0	9	
44040100	MPADM PUBLIC ADMIN	SSC	7	8		15	2	4	0	6	4	7		11	6	3		9	6		6	41	
			8	10		18	5	6	0	11	4	9		13	9	7	1	17	7	0	0	7	
TOTALS COAS			12	20	0		14	15	4		16	29	1		21	16	2		15	0	0		
52020100	MBA ACCOUNTING	IBFS	2	2		4	2			2	3			3	2	2	1	5	1		1	14	
52020100	MBA INTNL FINANCE	IBFS	1	4	1	6				6	6			6	4	4	1	9	2		2	21	
52020100	MBA INTNL BANKING	IBFS																				0	
52020100	MBA INTNL TRADE	IBFS																				0	
52020100	MBAIBK INTNL BANKING	IBFS	3	1	2	6	1	1	1	3	1	1	1	3		1	2	3	1		1	15	
52110100	MBAIT INTNL TRADE	IBFS	3	2	3	8	3		1	4	1	5		6	2	6		8	1		1	26	
52030100	MPACC PROF ACCTNCY	IBFS	4	3	1	8	4	7	1	12	4	8	2	14	5	7		12	2		2	46	
			13	12	7	32	10	8	3	21	14	10	8	32	13	20	4	37	7	0	0	7	
52020100	MBA BUSINESS ADMIN	IBTS																				0	
52020100	MBA INFO SYSTEMS	IBTS					1	1		2		1		1		2		2	1		1	5	
52020100	MBA INTNL BUSINESS	IBTS	20	9	9	38	6	19	5	30	26	17	12	55	17	15	14	46	26		26	169	
52020100	MBA MANAGEMENT	IBTS	6	7	2	15	7	7	2	16	7	5	4	16	5	7	4	16	8		8	63	
52020100	MBA MARKETING	IBTS									2			2								2	
52120100	MS INFOR SYSTEMS	IBTS	13	10	13	36	16	8	19	43	26		25	51	22	5		27	37		37	157	
52020300	MS INTNL LOGISTICS	IBTS																				0	
52110100	PhD INTNL BUSINESS	IBTS			0	0		1		1			0	0			0	0	2		2	1	
			39	26	24	89	30	36	26	92	61	23	41	125	44	29	18	91	74	0	0	74	
TOTALS COBA			52	38	31		40	44	29		75	33	49		57	49	22		81	0	0		

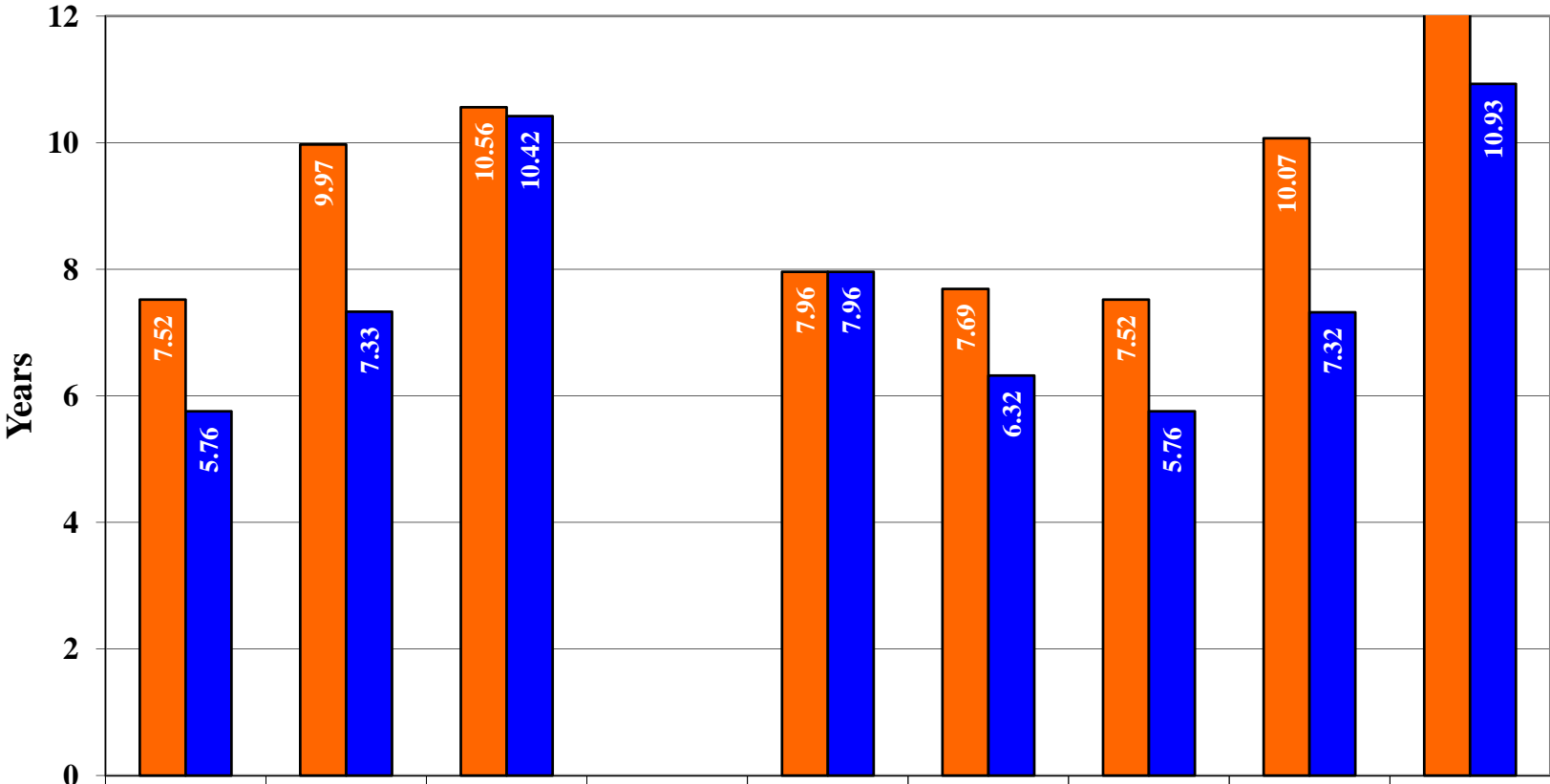
TEXAS A&M INTERNATIONAL UNIVERSITY GRADUATES BY DEPARTMENT BY COLLEGE BY LEVEL

GRADUATE DEGREES			DEC	MAY	AUG	AY	DEC	MAY	AUG	AY	DEC	MAY	AUG	AY	DEC	MAY	AUG	AY	DEC	MAY	AUG	AY		
			2005	2006	2006	TTL	2006	2007	2007	TTL	2007	2008	2008	TTL	2008	2009	2009	TTL	2009	2010	2010	TTL		
13030100	MS CURR&INSTR	CI	1	2	6	9	2	1	3	6	6	5	2	13	6	8	6	20	6			6	48	
13020100	MSED BILINGUAL ED	CI	1	5	1	7	4	3	4	11	4	2	2	8	4		1	5				0	31	
13121000	MSED EARLY CHILD ED	CI	1	1		2	1	1		2	2		1	3	1			1				0	8	
13131500	MSED READING	CI					2	7	2	11	4	1	4	9	6	3	2	11	1			1	31	
			3	8	7	18	9	12	9	30	16	8	9	33	17	11	9	37	7	0	0	7		
13100100	MS GEN SPEC EDUCATION	PPRO	6	18	9	33	3	8	3	14	4	7	4	15	7	4	2	13	1			1	75	
13110100	MS SCHOOL COUNSELING	PPRO	5	11	13	29	3	8	12	23	8	1	6	15	5	7	2	14	6			6	81	
13040100	MSED ED ADMINISTRATION	PPRO	14	17	13	44	14	17	18	49	10	7	27	44	19	23	25	67	11			11	204	
			25	46	35	106	20	33	33	86	22	15	37	74	31	34	29	94	18	0	0	18		
	TOTALS COED		28	54	42		29	45	42		38	23	46		48	45	38		25	0	0			
51160500	MS NURSING	NUR				0	14		0	14	7			7				0	17			17	21	
	TOTALS CNHS						14				7				0				17					
	SUBTOTALS		92	112	73		97	104	75		136	85	96	0	126	110	62	0	138	0	0	0		
	ANNUAL MASTERS SUBTOTALS				277				276				317				298					138		
	TOTALS		326	417	151		373	445	154		397	429	196		397	462	161		455	0	0			
	ANNUAL TOTALS				894				972				1022				1020					455		

Average and Median Time to Undergraduate Degree Dept: CI

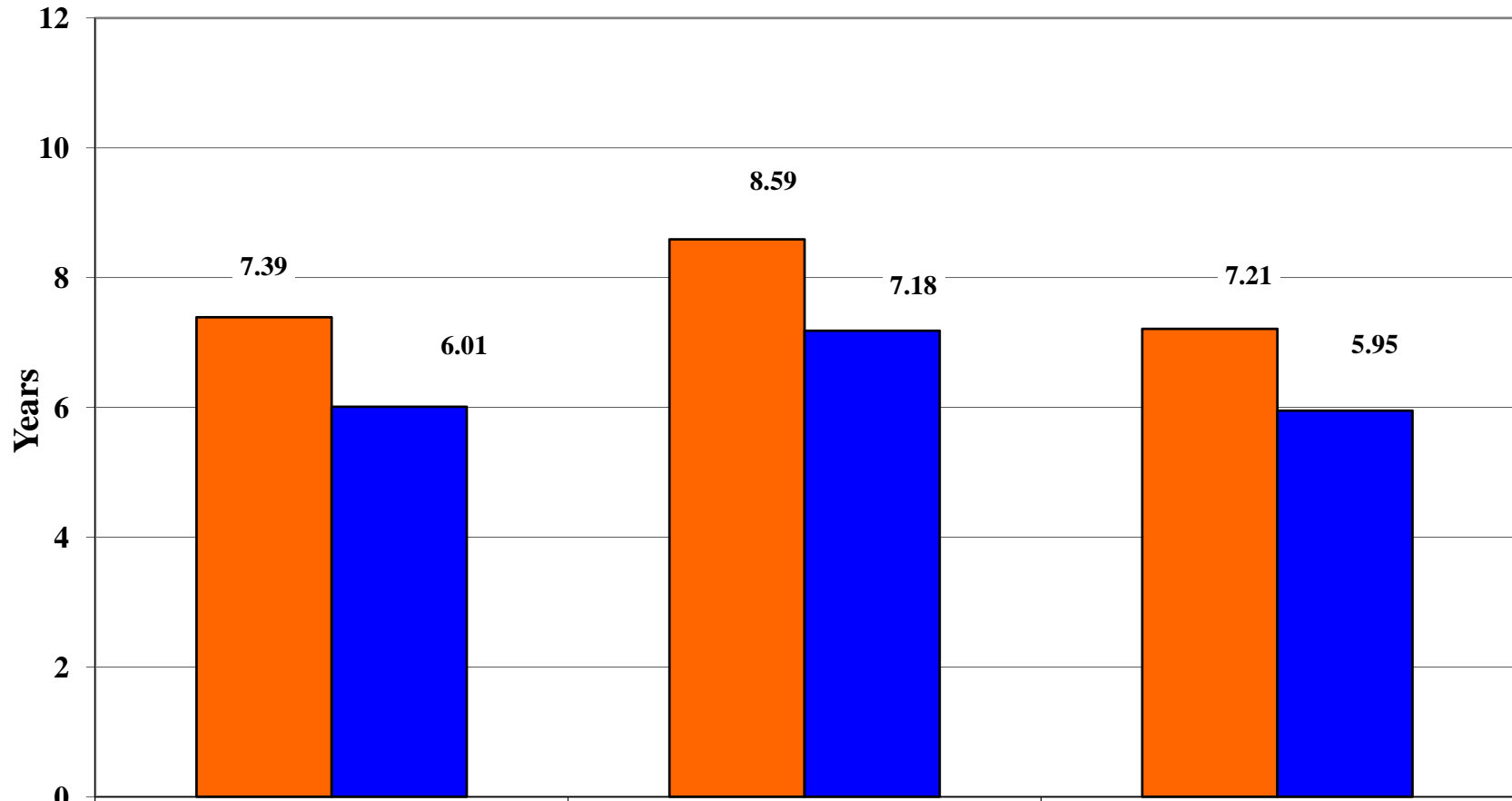


**Average and Median Time to Undergraduate Degree
Dept: PPRO**



	2007	2008	2009	2007	2008	2009	2007	2008	2009
DEPT PPRO									
BS COMMUNICATION SCIENCES									
BS SPECIAL EDUCATION									
Average	7.52	9.97	10.56		7.96	7.69	7.52	10.07	12.39
Median	5.76	7.33	10.42		7.96	6.32	5.76	7.32	10.93

**Average and Median Time to Undergraduate Degree
Dept: TCHP**



BS FITNESS AND SPORTS

Average	7.39	8.59	7.21
Median	6.01	7.18	5.95