

Intelometry

TAMIU Internship Opportunity

- ***Energy Consulting and Software***

- *Founded in 2003*
- *Primarily Focused on the Retail Energy Market*
- *Houston Headquarters*
- *Nashville Product Development and Data Center*
- *Tallinn Development Office*

- ***Intelometry Differentiators***

- Unique Blend of Business and Technology Talent
- Depth and Breadth of Market Knowledge
- Disciplined Approach and Methodologies

Generation

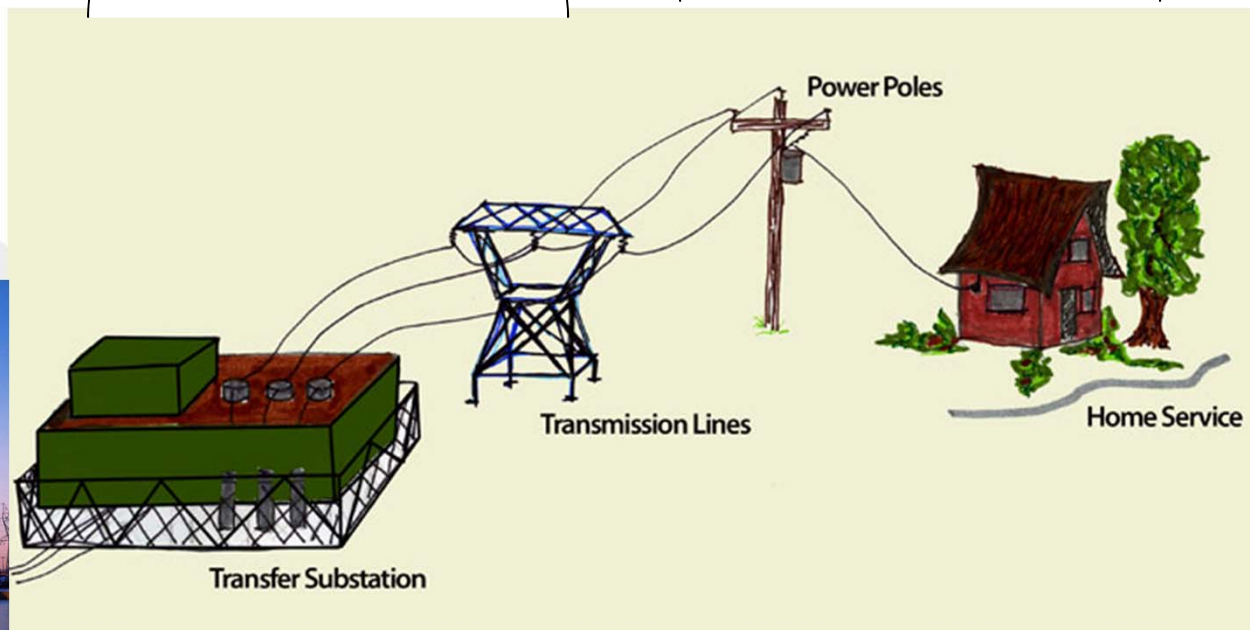


Transmission

Generally >69 kV

Distribution

Generally <69 kV

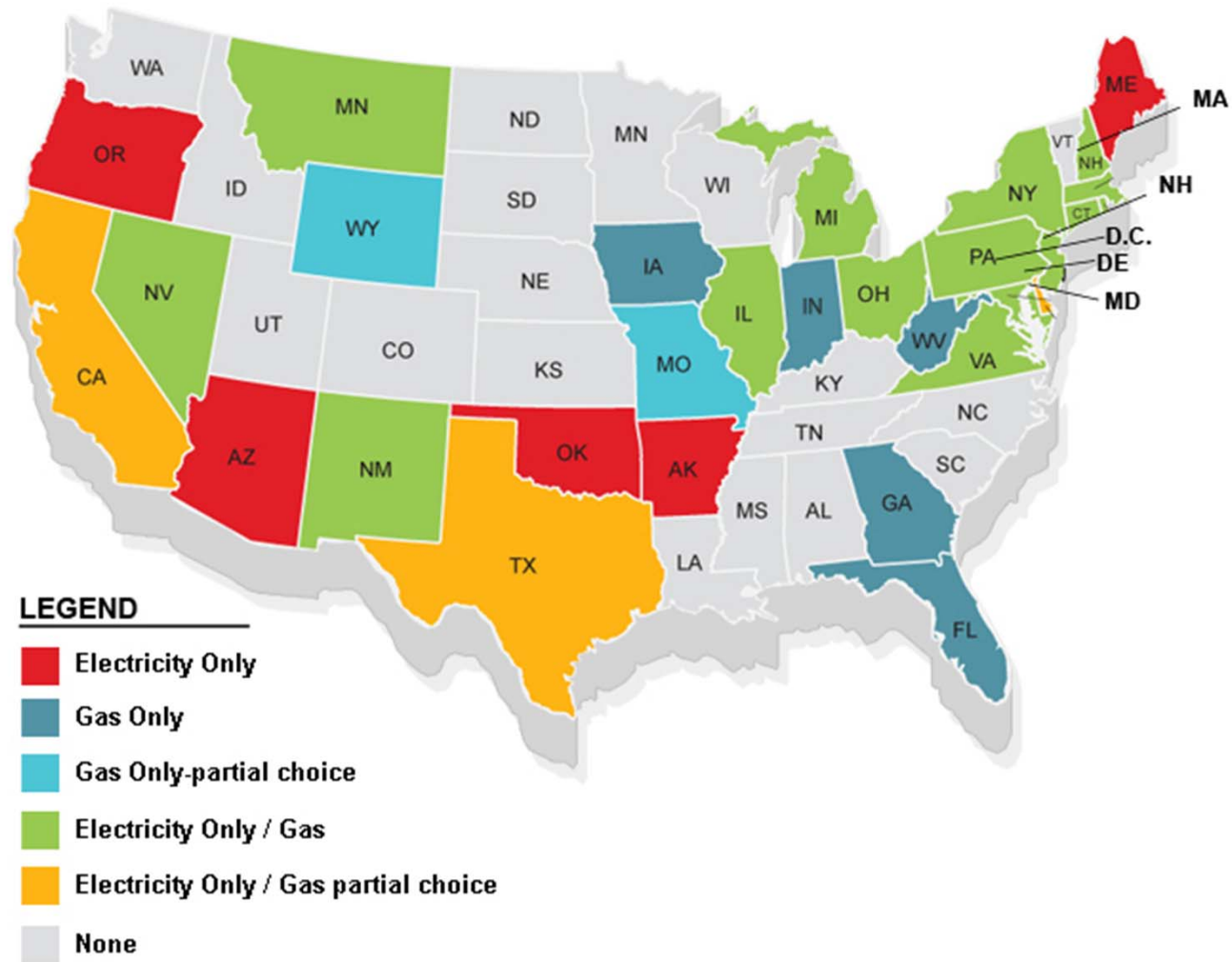


Competitive

Others Companies Beside Incumbent Utility Can Provide

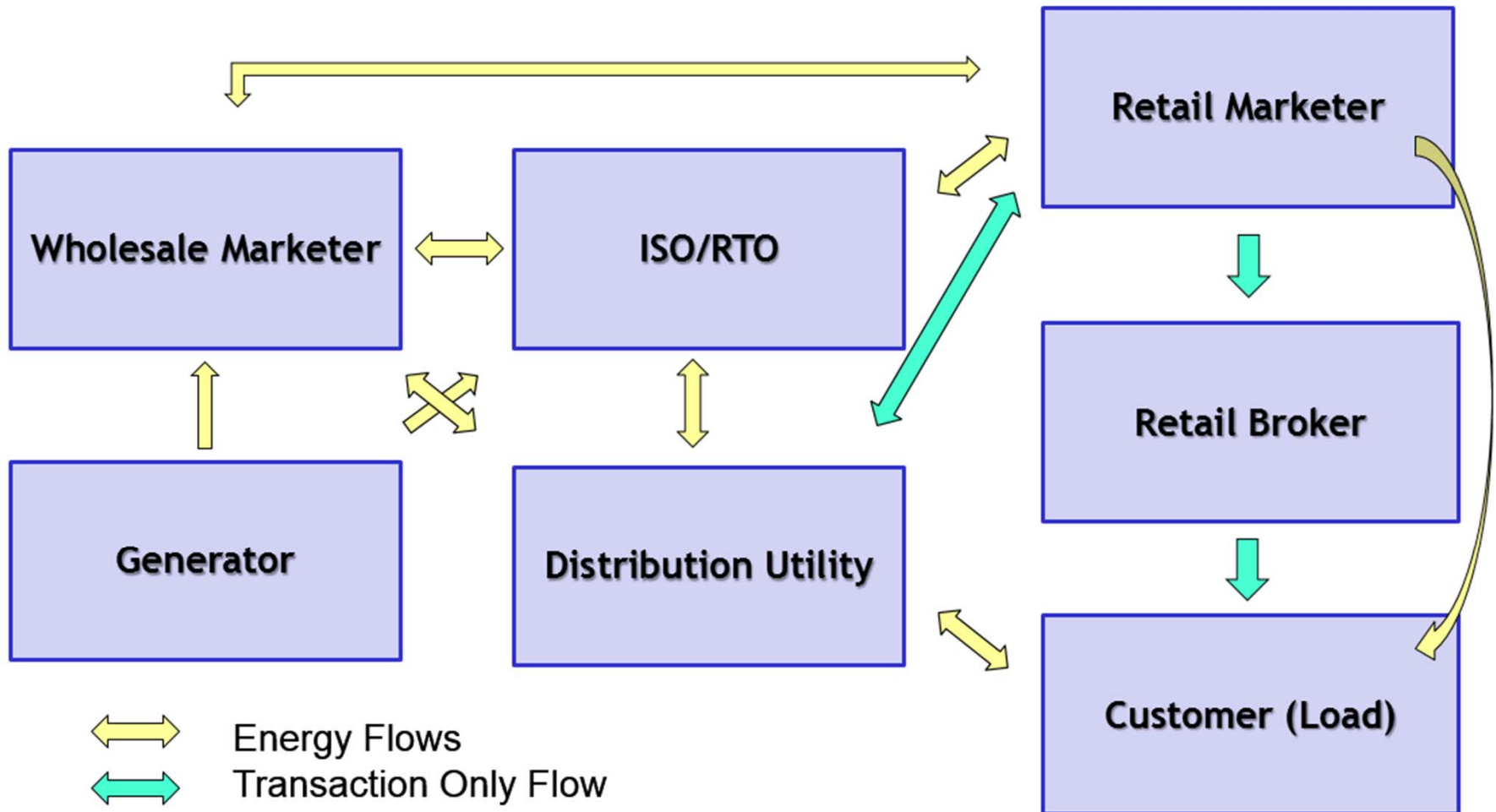
Monopoly

Only the Incumbent Utility Can Provide

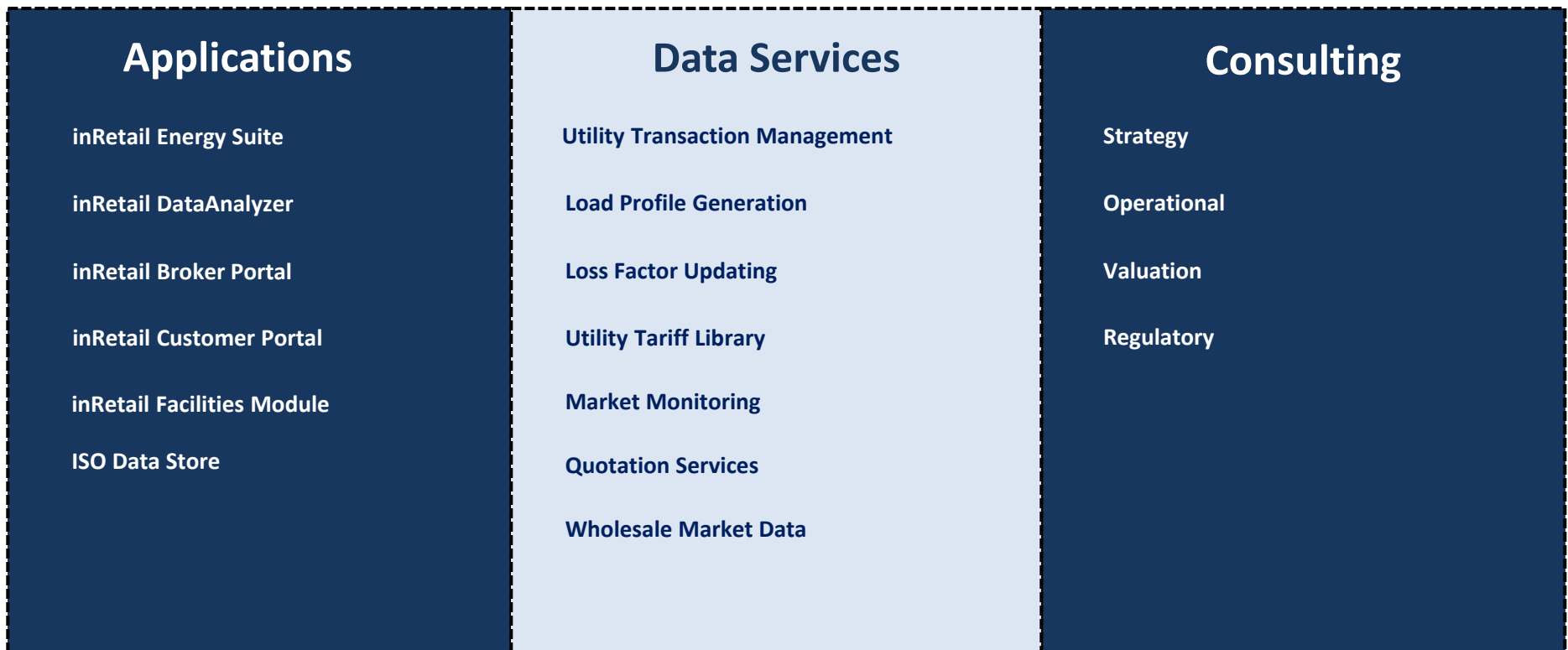


Microsoft Excel
Worksheet

- **Electric Choice aka “Deregulation”, “Competition”**
 - Allows customers (load) to purchase generation from a retail supplier
 - Not all areas have introduced choice – mostly northeast, midwest, TX, CA.
 - For markets that have choice, there is **little to no homogeneity**.
 - Every market has different terms for the same thing and much different ways to do business.
 - Generation suppliers may or may not own generation.



One set of integrated solutions for retail power and natural gas markets





Intelometry's inRetail™ suite covers the full spectrum of the energy deal life cycle



Why Should I Work for Intelometry?

- *Fast Paced and Dynamic Environment*
- *Virtually Unlimited Opportunities to Learn and Grow*
- *Little Corporate Bureaucracy*
- *Opportunity to Learn About an Entire Business Instead of a Single Silo*
- *Flexible Work Environment*
- *Competitive Salaries and Excellent Benefits*

- **College Credit Eligible**

- Pending on the corresponding department approval

- **Paid Experience**

- **Business School Students**

- Position will be determined at time of employment

- **Non-Business School Students**

- Subscription Services

■ Candidate Profile

- Junior, Senior, or Graduate students
- Highly analytical
- Strong mathematical background
- Great communication skills
- Proactive and willing to go above & beyond
- Familiar with statistical software
- Willingness to learn about the energy industry

- **Business School Students**

- Submit resume to Mrs. Leiza Nochebuena-Evans at Inochebuena@tamiu.edu

- **Non-Business School Students**

- Apply via DustyWorks

- **Two Interview Rounds**

- 1st On-Campus
- 2nd Phone Interview