



PORT CORPUS CHRISTI

The Port
of the
Lone Star
State.™

“How to Become a Stakeholder
in the Port of Corpus Christi?”

Texas Energy Summit 2014
Laredo, TX



History

Maritime District of the State of Texas



Opened its doors to commerce on September 14, 1926



Port POLITICAL Structure

Governed by an
Appointed 7-Member
Commission



City of Corpus Christi (3)
Nueces County (3)
San Patricio County (1)

2014 Port Commission



Judy Hawley - Chair
Richard Borchard – Vice Chair
Charlie Zahn - Secretary



Al Jones
Barbara Canales
David Engel
Richard Valls



Port CORPUS CHRISTI

Fifth Largest U.S. Port by Tonnage
Approx. 90,000,000 Tons/Year
50 Private and Public Docks
45-Ft Deep Channel – Existing
52-Ft Deep Channel – Authorized & Permitted





Port CORPUS CHRISTI Programs



PCCA is in the sixth year of certification of our Environmental Management System to the ISO 14001 standard. EMS ensures we are compliant but also gives us a framework to go above and beyond the requirements. The significant environmental improvements that we achieve make us good stewards of the environment and have sustainable operations.



Our employees are our most important resource. We protect this resource by maintaining a world class safety program. Working with established safety policies, is an absolute requirement for all employees.



The Port's Police department provides a nationally recognized, multi-layered security structure leveraging intelligent video analytics, physical security barrier systems, and interoperable radio communications systems, working in concert with our local, state, and federal partners.



Northside CAPABILITIES

Dockside Truck and Rail Transfer

45-ft Draft

Up to 750-ft Vessel

122,000 sq ft Covered Storage

48-ft Canopy

Ro/Ro Ramp





Southside CAPABILITIES

Up to 45-ft Draft

Dockside Truck and Rail Transfer

Receive vessels above 1000-ft

Dock can handle 1500-lbs/sq-ft

Adjacent Covered Storage

- CD 14 = 65,000 sq ft
- CD 15 = 100,000 sq ft





Wind Components

WIND Components

2014 YTD

13 Vessel calls
200 blades
100 towers
50 hubs
50 nacelles

2014 FORECAST

30 vessel calls
900 blades
300 towers
300 hubs
300 nacelles
300 rotors





Surface TRANSPORTATION

Direct Access to Major Interstate Highways

Direct BNSF, UP and KCS Rail Service

Uncongested Routes

Minimal Escort Requirements





Surface Connectivity - Rail

INTERNATIONAL RAIL CONNECTIONS

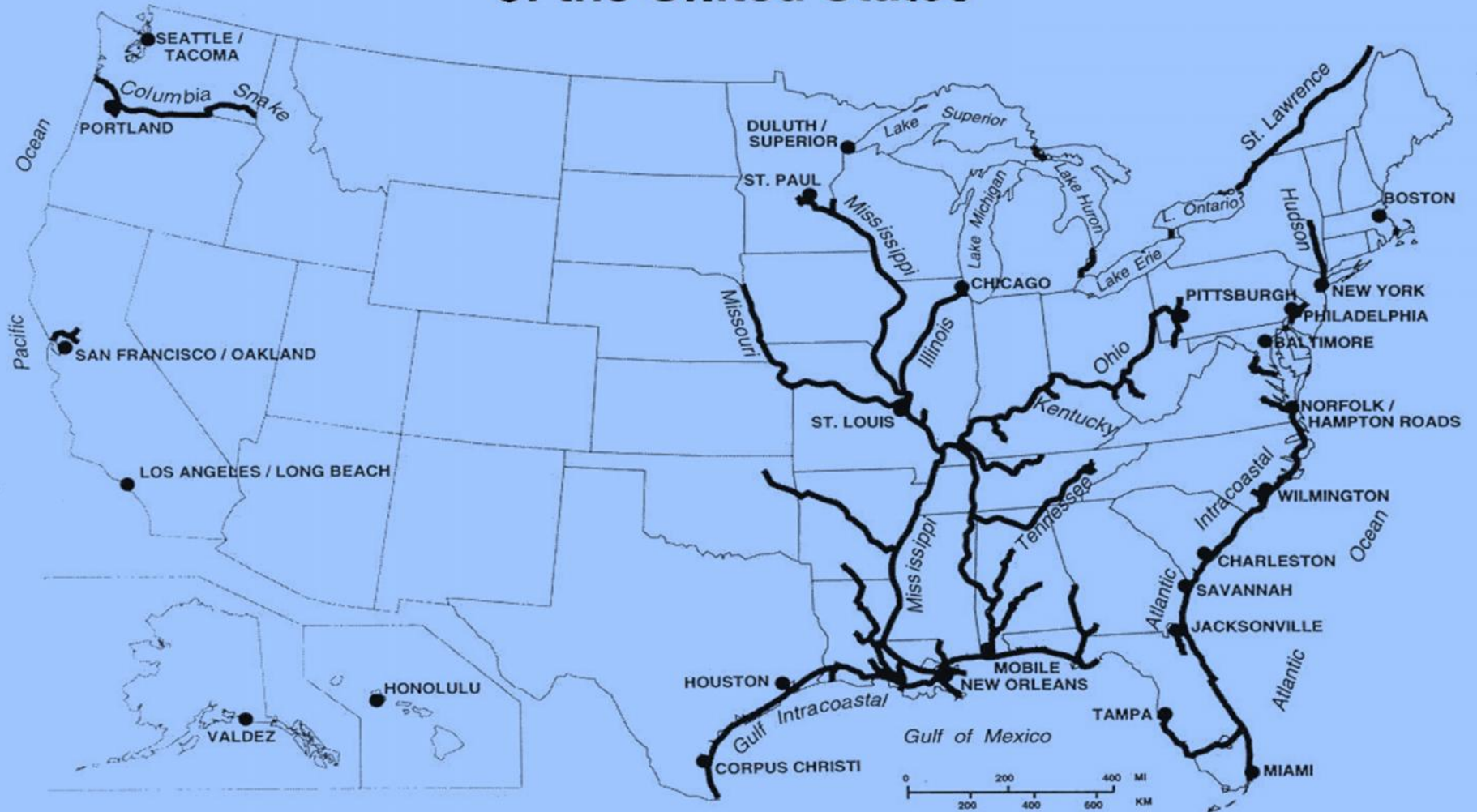


P.O. BOX 1541
CORPUS CHRISTI
TEXAS 78403
1-800-580-7110
www.portofcorpuschristi.com



Waterways CONNECTIVITY

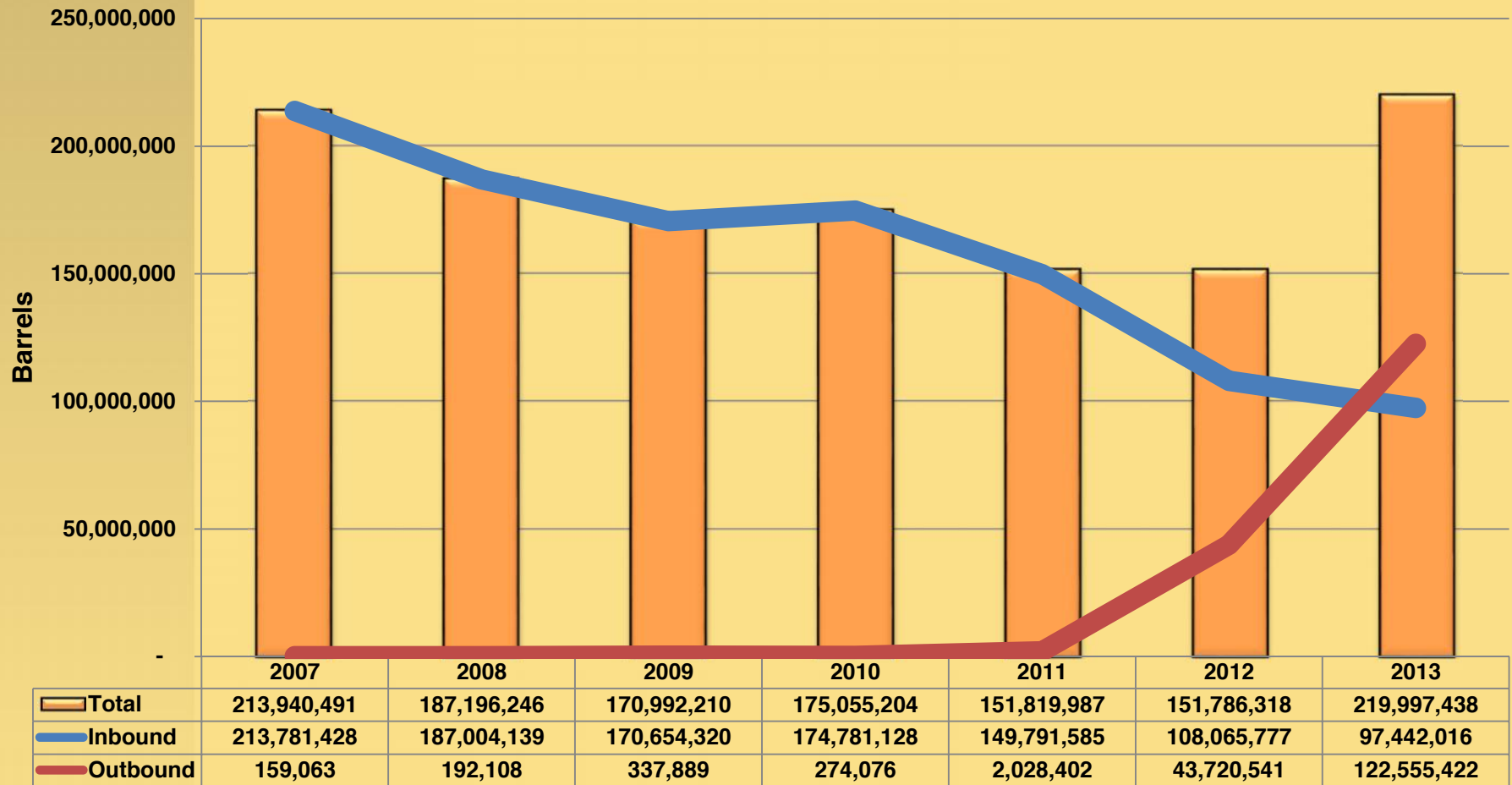
Ports and Navigable Waterways of the United States





CRUDE OIL Impact to Tonnage

**Crude
Inbound - Outbound
2007 - 2013**



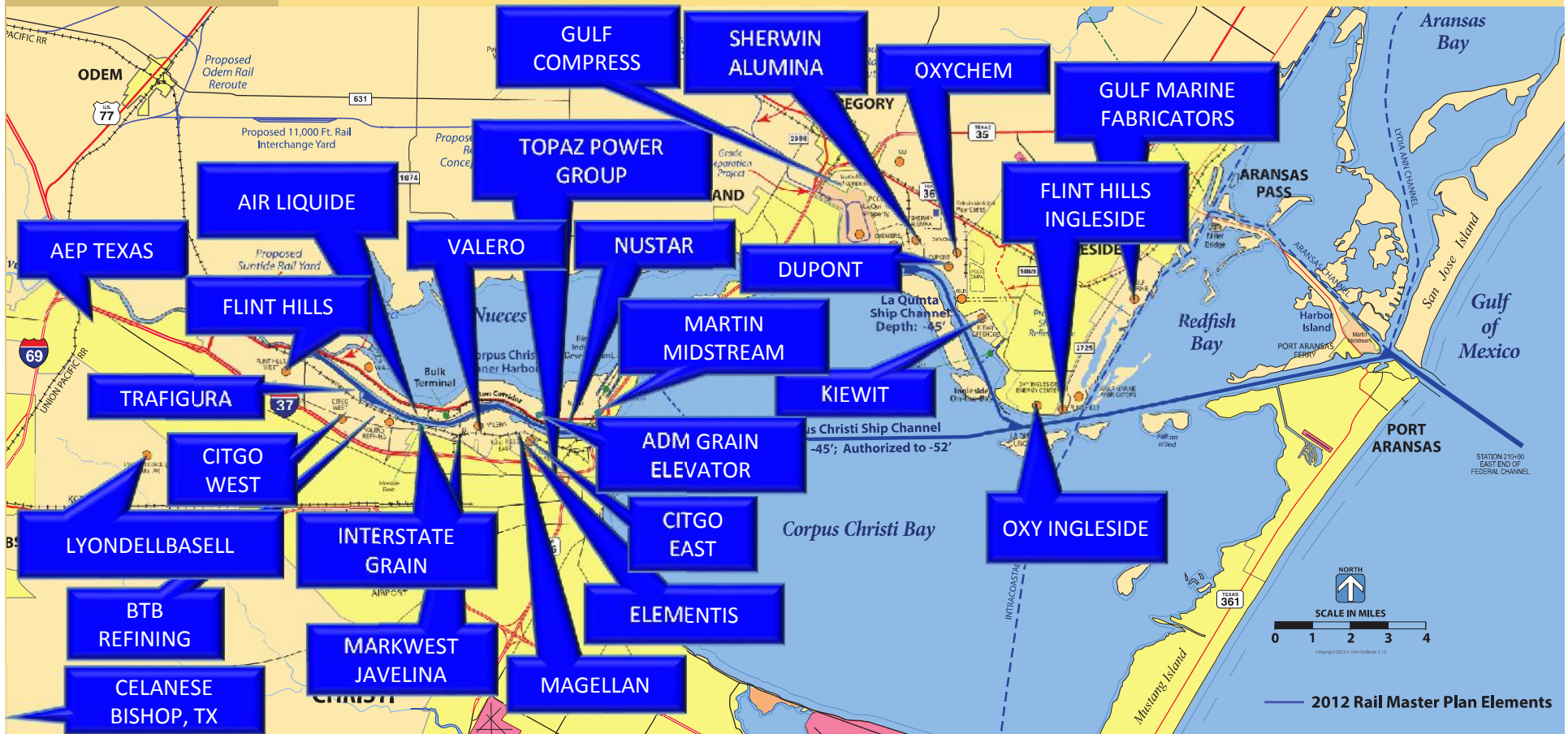


EAGLE FORD Shale Play





POCCA Today \$21 B+





Cheniere Energy

Cheniere

State & Federal
Permitting
Underway

4-5 Year
Construction

200 Jobs

\$13 Billion
Investment





TPCO America

TPCO America

Phase 1 complete

Phase 2 starting
2014

600-800 new jobs

\$1.3 Billion
Investment





Voestalpine

voestalpine

Air Permit Filed
with TCEQ

Broke Ground
2014

150 jobs (Phase 1)

\$850 Million
Investment





M & G

M&G

Projected to be
largest PET plant
in the world

Filed Air Permit
with TCEQ

220 Jobs

\$751 Million
Investment





Trafigura & Plains Pipeline

Trafigura

Trafigura & Plains
Marketing

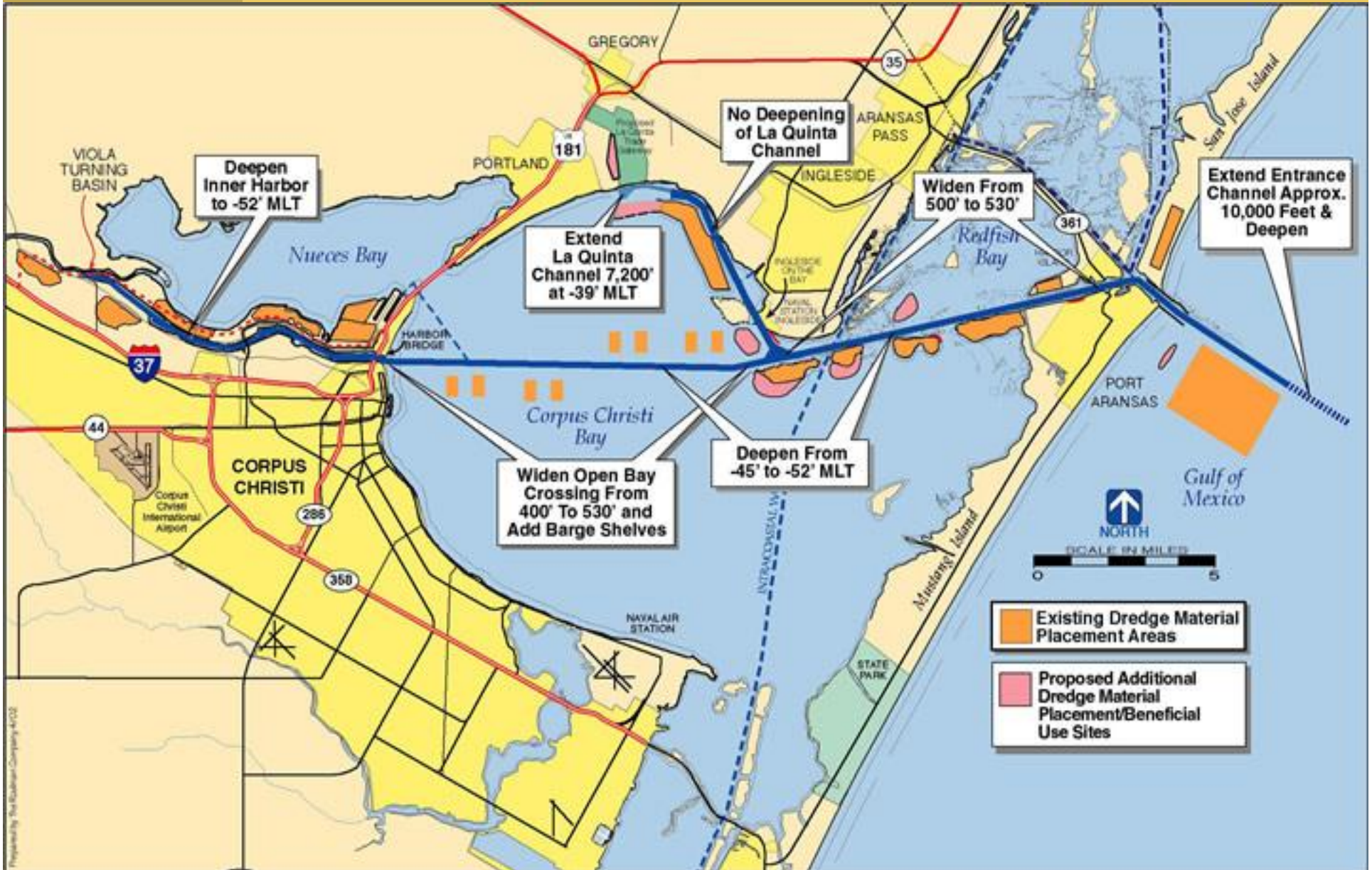
Adding storage
tanks for Eagle
Ford Shale

\$800 Million
Investment



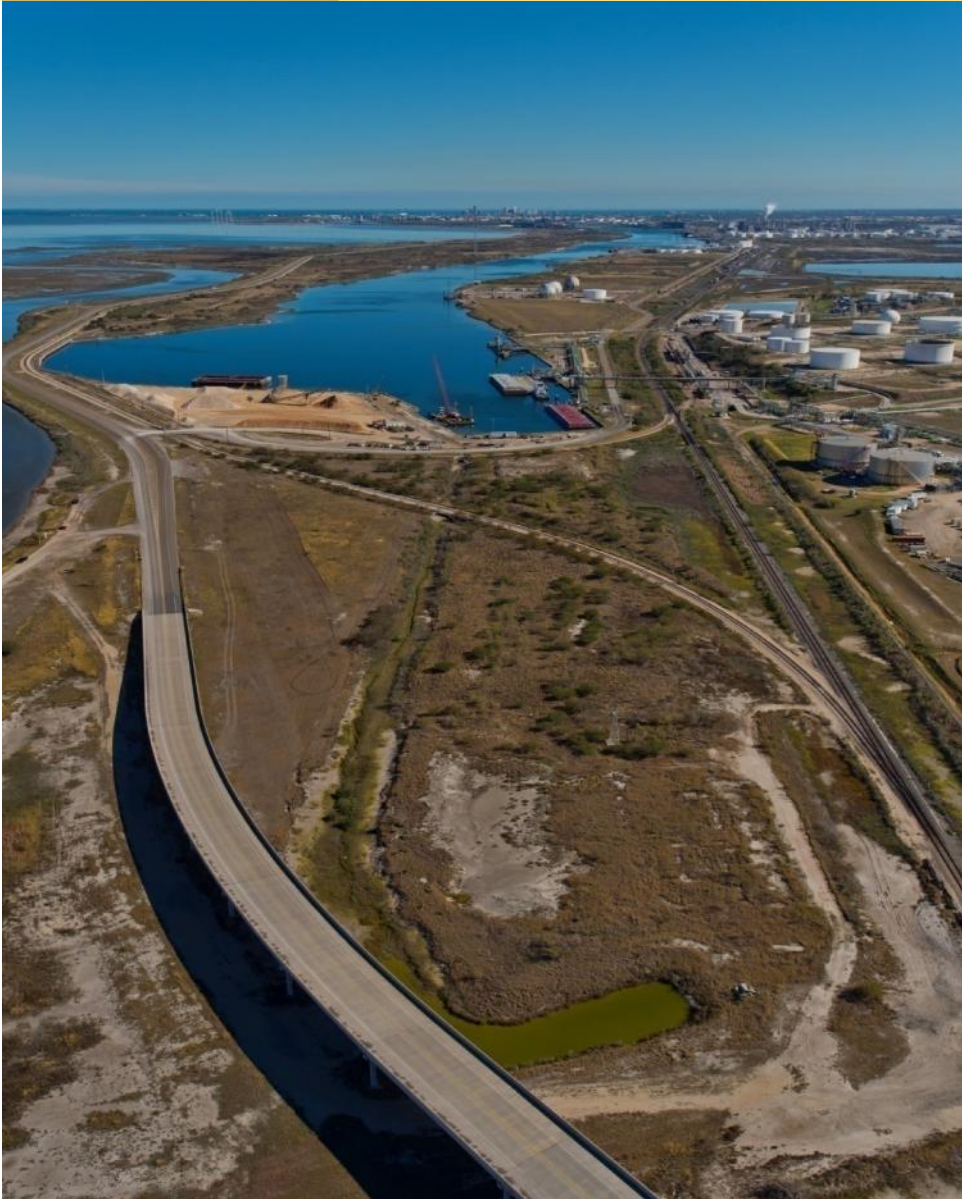


Channel IMPROVEMENT Project





The JOE FULTON Corridor





NUECES RIVER Rail Yard



Project Update:

- Mitigation & Storm water controls completed
- Earth work underway placing lime stone base on interchange yard.
- Rail lines delivery expected Feb 2014
- **Phase 1** – Completion Nov 2014
- **Phase 2** - Under design



La Quinta Channel EXTENSION Project



Extended La Quinta Channel
1.4 miles

Construct Ecosystem Restoration
Features to Protect Endangered
Species, Wetlands & Seagrass

Total Cost \$73 Million

- \$ 58 Million Federal Funds
- \$15 Million Port Funds



La Quinta Channel TRADE GATEWAY





Foreign Trade Zone BENEFITS

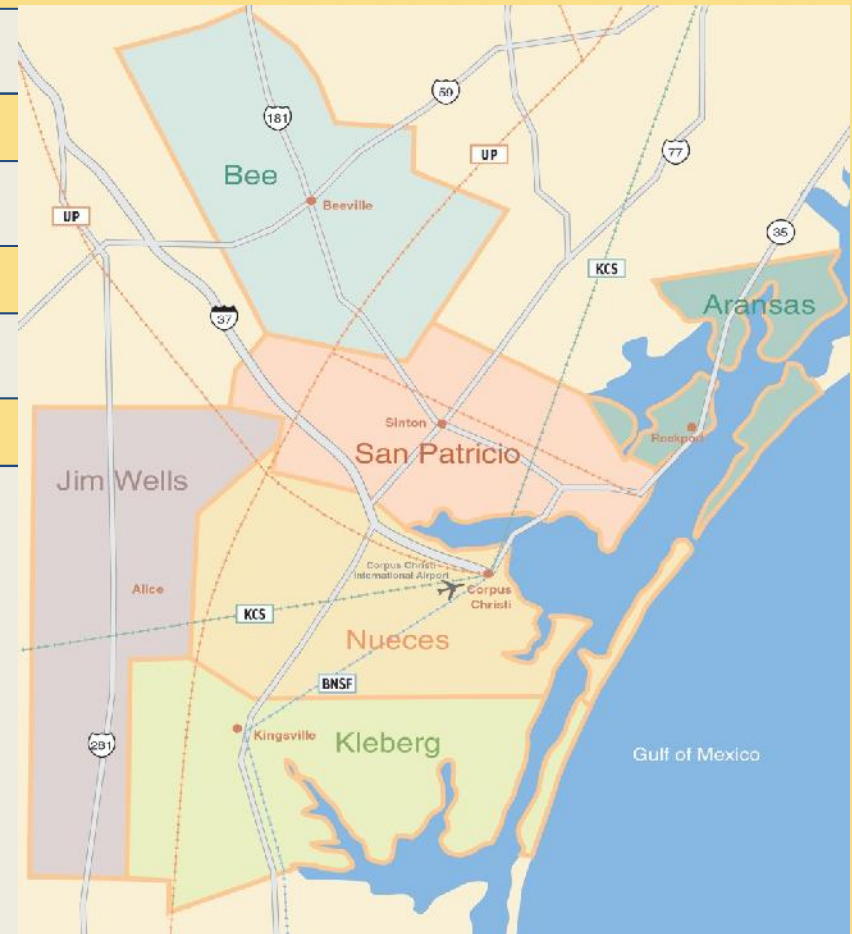
FTZ #122 One of the Largest Zones in the U.S

Handles Variety of goods and Products

Secured Areas Under Supervision of U.S. Customs and Border Protection

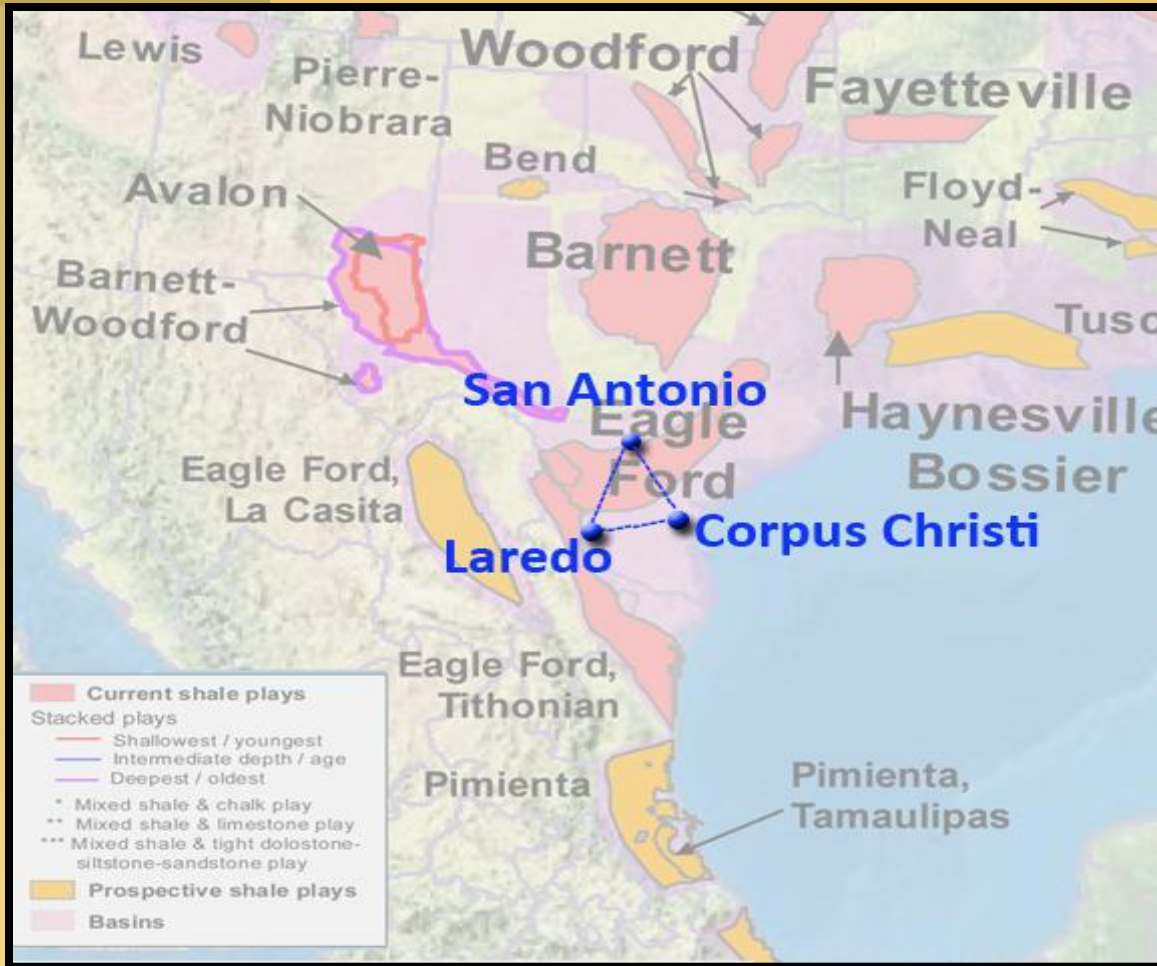
Benefits and Advantages:

- Defer Duties
- Reduced Duties
- Eliminate Duties
- Minimize Security Costs
- Eliminate inventory/Ad Valorem Tax
- Eliminate Drawbacks
- Avoid Quotas
- Simplify Inventory Controls





A TEXAS REGION Full of Opportunities



Laredo
Largest Inland Port
in the United States

San Antonio
Region's Largest
Industrial Airport

Corpus Christi
5th Largest Port
in the United States

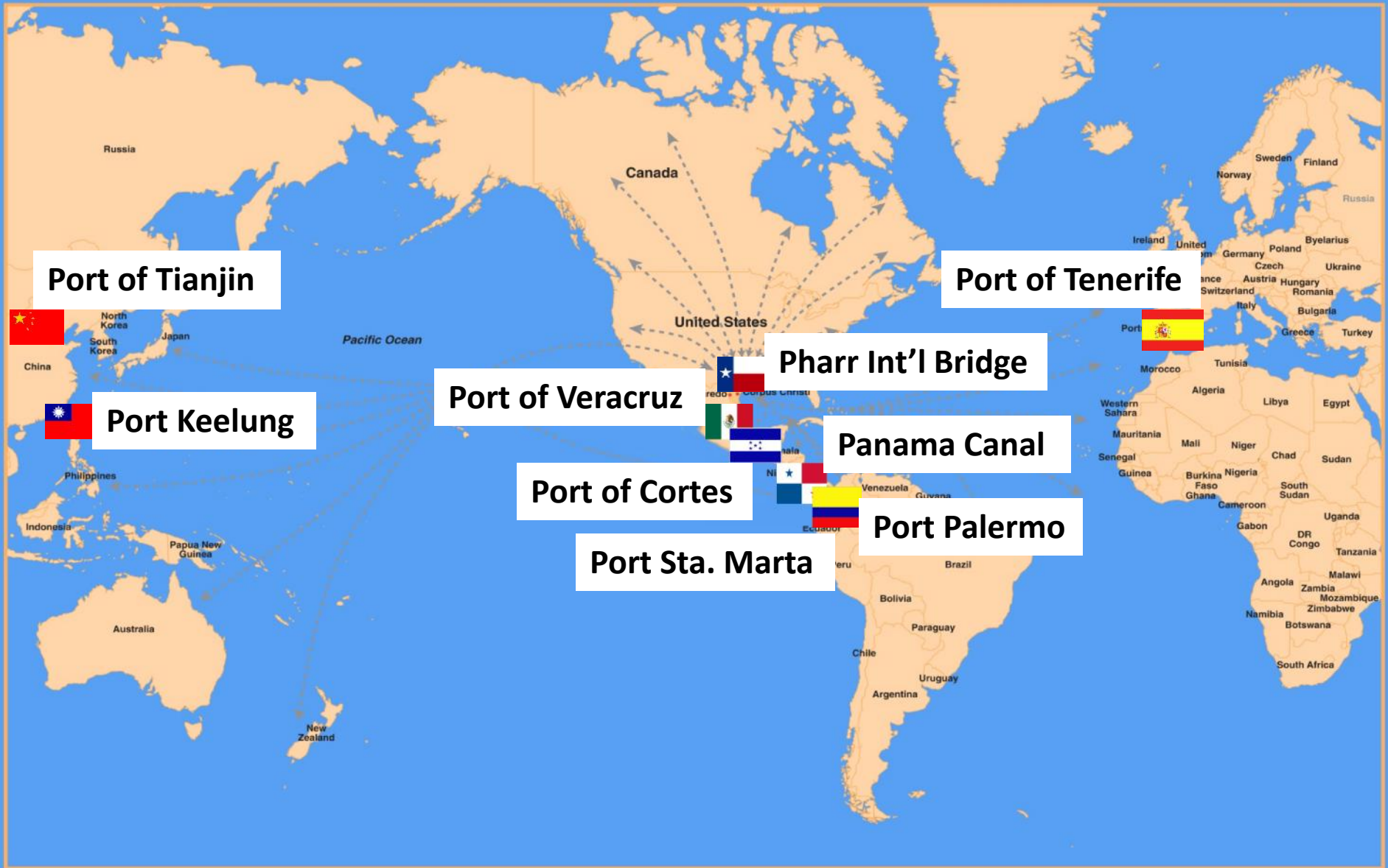


REGIONAL INDUSTRIES

- Energy
- Aerospace
- Automotive
- Manufacturing
- Consumer Goods/Retail
- Agriculture
- Military

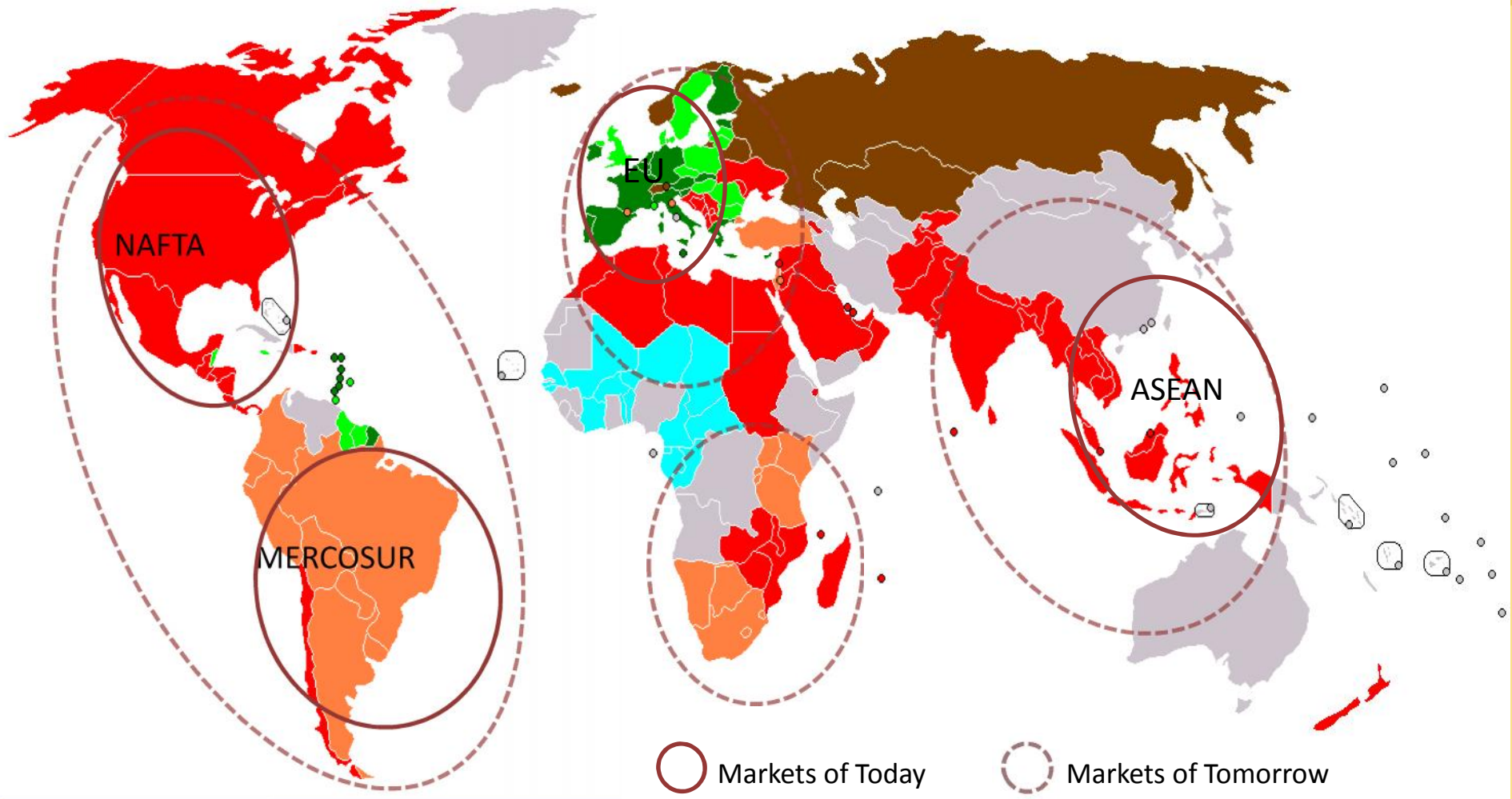


Worldwide MOU Alliances





Future Global Trade Perspective



Legend: NAFTA = North American Free Trade Agreement

MERCOSUR = Common Market of the South – Argentina, Brazil, Paraguay, Uruguay

EU = European Union

ASEAN = Assoc. of Southeast Asian Nations – Indonesia, Malaysia, Philippines, Singapore, Thailand, Cambodia, Laos, Vietnam, Burma



Global Seaborne Trade 2030 FORECAST




World seaborne trade will reach 24 billion tons a year by 2030 compared to the current 9 billion tons.



Approximately 90% of world trade by volume is carried by sea

China will overtake USA to become the world's largest oil consumer



Coal consumption will double by 2030 to around 8.4 billion tons. China accounting for 60%

Natural gas will double to 5.4 billion tons by 2030, from 2.7 billion in 2010. The USA largest consumer.



Source-Reuters



Courtesy of the Panama Canal Authority



PANAMA CANAL Expansion

The Panama Canal - 2015



It's all about economies of scale!

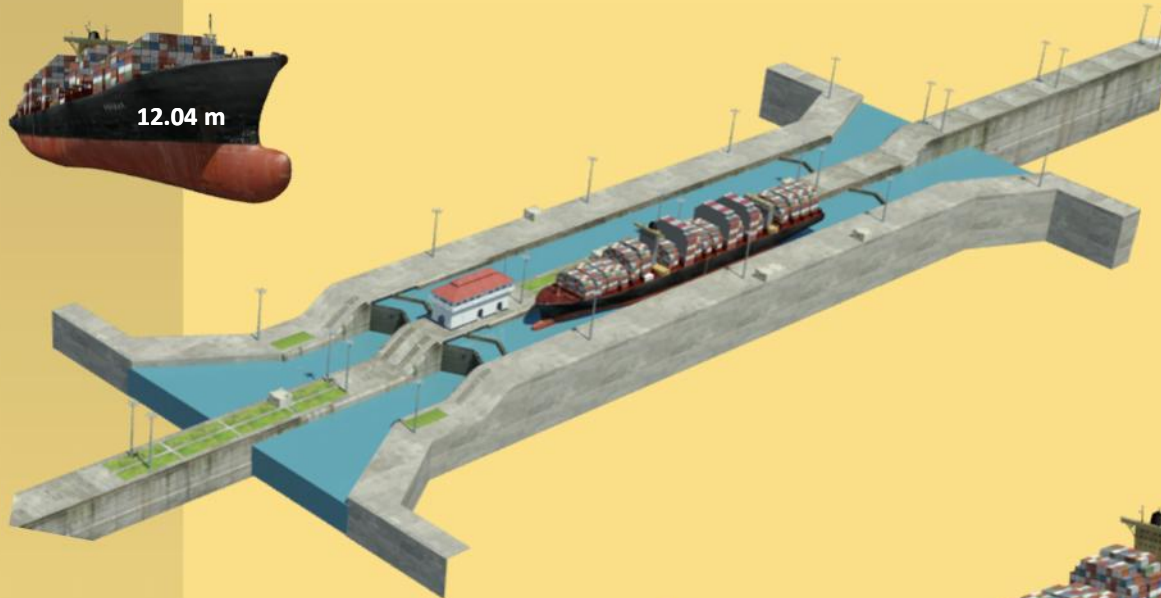
Courtesy of the Panama Canal Authority

Binational Center Library / Texas A&M International University



Impact on VESSEL SIZE

Maximum size of vessels in existing Locks: 4,400 TEU



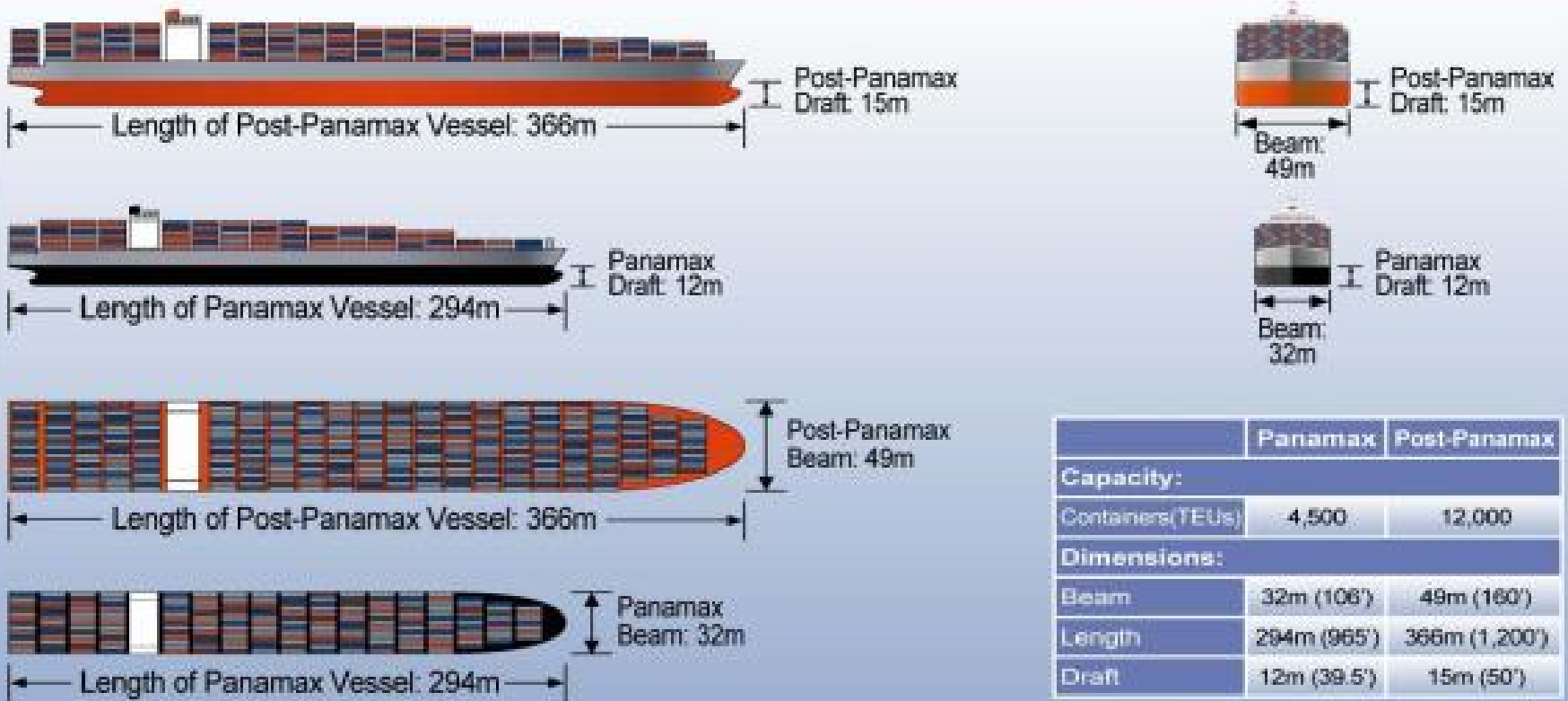
Maximum size of vessels in new Locks:

13,000 – 14,000 TEU

Courtesy of the Panama Canal Authority

The Present & The Future

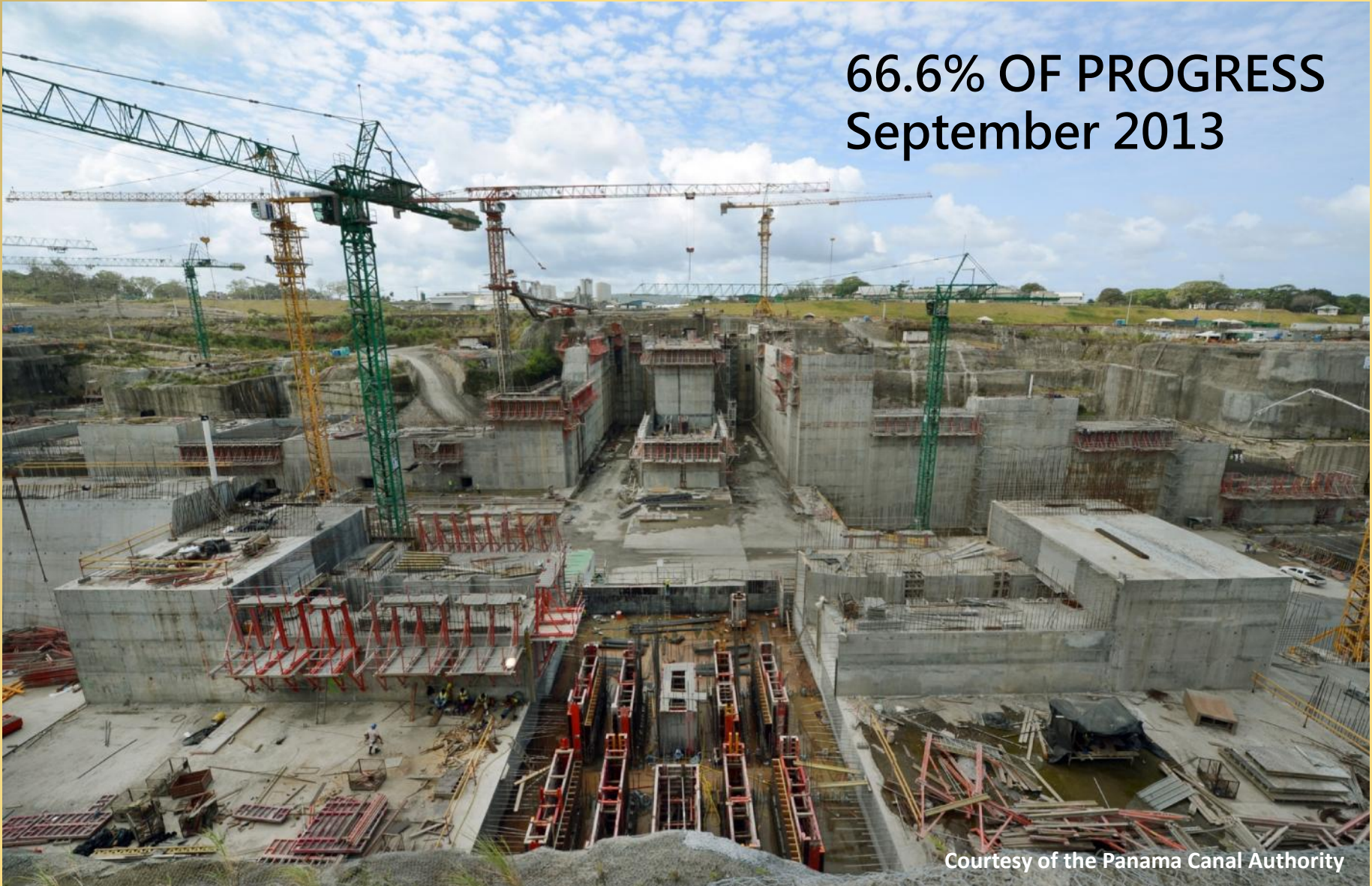
Comparison between Panamax and Post-Panamax Container Vessels





Complex Construction

**66.6% OF PROGRESS
September 2013**



Courtesy of the Panama Canal Authority



1939 Excavations – Pacific Site

2013



Courtesy of the Panam



Locks – Atlantic Site





Gates Transport and Installation

Pacific Site



Courtesy of the Panama Canal Authority



PANAMA CANAL Expansion Impact



Panama Canal expansion—coupled with continued population growth in Texas, energy sector developments, and the emergence of new trading partners throughout the world—represents opportunities to expand Texas' position as a global gateway for the nation.

***Lower US/ASIA LNG
shipping cost***

**Only 21 of 370 LNG Tankers
currently move through the
Panama Canal. More than 80%
of fleet will be able to pass
once expansion is complete**

Thank You



PORTCORPUSCHRISTI

The Port
of the
Lone Star
State.™

Ruben Medina
Director of Business Development
rubenm@pocca.com