

MAKING CONNECTIONS FOR YOU

THE OFFICE OF CAREER SERVICES TEXAS A&M INTERNATIONAL UNIVERSITY 5201 UNIVERSITY BOULEVARD SC-114 LAREDO, TX WWW.TAMU.EDU/CAREER

TAMU'S PROGRAM OF THE MONTH:

*The Office of
Graduate Studies
and Research*

Dr. Jeff Brown, Dean

The Key to Success in
Engineering (page 9)

TAMU'S Pre-Engineering
Program
(Page 4)

The Top 100 Employers By
Rank
(page 9)





INSIDE THIS ISSUE

Cover Story: TAMIU Program of the Month.....	2
Coffee Talk with Cassandra	2
Meet the Staff	2
Tips from Terry!	3
TAMIU Engineering program	4
Featured Article	5
Dress to Impress	6
AUTMUS	7
Top 100 Employers	8
Keys to Success in Engineering	9
HESTAC Job Fair.....	10

TAMIU Program: Graduate Studies and Research

Jeffrey M. Brown, PhD, [Dean of Graduate Studies & Research](#) at [Texas A&M International University](#) has served 12 years as a Psychology faculty member here at TAMIU, three years in administration as an interim Director, then Director, followed by Dean of Graduate Studies & Research.

As Dean of Graduate studies and research, Brown’s responsibility is to manage the grant submission process, while also managing the internal grant award process - University Research Grants. On the Graduate Studies’ side of the operation, Brown also manages what could best be described as smaller versions of many larger offices on campus: managing the graduate admissions process, graduate recruiting, financial aid via the Lamar Bruni Vergara Educational Fund, and graduate registration while a student is in the middle of the admissions process.

Each one of these items just listed is a process or system that entails many different and sometimes unique sub-processes or interfaces. For example, from the perspective of the Office of Graduate Studies, graduate admission requires interfaces with the Office of Admissions, the Registrar’s Office (on occasion) and each and every academic department on campus. Each of these departments has a slightly different nature or personality, which requires a slightly different approach. One simple example of this is that different departments have a preference about how to interface with different individuals in their department - e.g., secretaries, department chairs, program directors, or the chair of the department admissions committee. Within this framework, Graduate Studies routes and processes over 4,000 applications every year.

According to Brown the most challenging part of the job is also the most rewarding, “When I was originally hired there was no Office of Graduate Studies & Research, no staff and no budget. In four short years, the office now has 7 employees and an operating budget of roughly \$750,000. Needless to say, this growth pattern entailed a tremendous amount of work, research, networking and persuasion. On the other hand, I enjoy building things and giving birth to new ideas. It’s very exciting and rewarding to see your ideas become a reality!”



Coffee Talk With Cassandra



[Cassandra Wheeler, Executive Director, Office of Career Services](#)

Welcome to CAREER CORNER! This newsletter provides information to the University community about our services, and special programming. In addition we connect alumni and students to employers regarding networking and employment opportunities. The Office of Career Services is committed to provide the best services to the University community and is continually “Making Connections for You.”

This month, we will feature one of TAMIU’s programs, Graduate Studies and Research and introduce you to a *new* program, pre-Engineering.

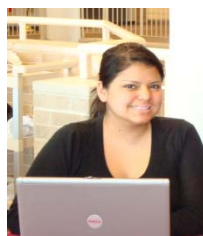
We hope you enjoy this issue. Email us at [Career Corner Newsletter](#) for comments or ideas for future newsletters. We would love to hear from you!

MEET THE STAFF



[Lygia Perez](#)
[Data & Information Specialist](#)

My job is to update the Division of Institutional Advancement’s WebPages & newsletters.



[Dulce Gutierrez](#)
[Staff Assistant](#)

My job is to tell you about our services and to help students, alumni and employers with Dusty Works.



“Simply put, graduate education gives you the tools to make your dreams a reality, and improve your future outlook immensely”.

-Jeffrey Brown

Tips from Terry!



[Teresa Chapa-Cantú, M.Ed.](#)
[Director, Student Relations](#)

Study Beyond a Bachelor's Degree

When I was an undergraduate studying Biology, I was sure I knew what I wanted to do for the rest of my life, be a Veterinarian! Well, as you can tell, I changed my mind somewhere along the way. Deciding on a career is not a straight shot. It takes some time, self-exploration, a few freshman (maybe sophomore) classes, and yes, frustration. Still, my eventual decision to be a psychologist was based on the knowledge that I needed to earn a graduate degree.

So, what *is* graduate school, and how do you apply to get in? Let's start at the beginning, that is after high school, and work our way up. If you were to chart advanced education degrees, your flowchart might look something like this:



So you see, advanced education can take on various forms. Graduate degrees are those beyond your Bachelor's [i.e., Master's, Juris Doctor, Doctorate of Philosophy (Ph.D.), and Doctorate of Medicine (M.D.)]. As you might expect, the fields that most often require a graduate degree are law, medicine, psychology or teaching at the university level.

Admission requirements for graduate programs differ from school to school, and vary by field of study. In general, there is often an admission test, like the Graduate Record Examination (GRE), that is required for full admission into a graduate program of study. Law schools require the Law School Admission Test (LSAT), while medical schools require the Medical College Admission Test (MCAT). Graduate programs in business may require a Graduate Management Admission Test (GMAT). There will usually be a minimum cutoff score required on the graduate admission test in order to be accepted for your program of interest. Your advisor can provide more information about testing.

Also as part of the application process, schools will require the student to write an essay or statement of purpose. This essay can take time to develop, so it is best to start on this as soon as possible. The essay can convey a great deal of information to the admission committee, including writing ability, personality, creativity, motivation, and level of maturity.

Finally, along with your official college transcripts, letters of recommendation may be required. Often, the school is interested in letters from previous professors or employers that can attest to your ability to succeed in a graduate program of study. It is better to approach a past instructor/employer who knows you, and your work, well. You will want to do this ahead of time to give the letter writer ample opportunity to write a strong letter for you.

Remember that there is financial aid available for graduate study, too. You may even qualify for scholarships and fellowships (which are like grants and work-study), for which you need to apply ahead of time.

Now, before you go off applying to just any school, it is important to research various programs at different schools to be sure these programs meet your educational needs. One way to do this is through a graduate school fair. TAMIU will be holding its Graduate and Professional School Fair next month, on October 20th from 10 a.m. to 3 p.m. in the Student Center Rotunda.

Graduate & Professional School Fair

Everyone is invited!

Monday, October 20th

Student Center Rotunda

10:00 - 3:00

Dental, Graduate, Law, Medical and Professional schools will be on site with information!

Learn strategies for taking the GRE (location and time to be determined). Watch your TAMIU email for more information!

Texas A&M International University Starts Engineering Program

This Fall, Texas A&M International University (TAMIU) will offer a B.S. degree in Systems Engineering, in addition to a pre-engineering program that allows transfer of students to Texas A&M University.

Systems engineering is an interdisciplinary field that enables the realization of complete engineering systems. The TAMIU curriculum prepares students to work in the broad field of Systems Engineering, and provide them with the solid foundations required to continue graduate school in a wide scope of disciplines if they decide to do so.

The curriculum includes courses in probability and stochastic modeling, systems optimization and control, systems integration, robotics, intelligent systems, engineering economics, and computer programming and simulation. Skills such as critical thinking, problem solving, communications, teamwork, and computer programming are emphasized. TAMIU already has several laboratories in place to support the engineering program. These include a Computer Integrated Manufacturing System Lab, a Computer science Lab, and an Electrical Engineering lab.

The Pre-engineering program allows students to take the first two or three years of core and engineering courses at TAMIU and if they maintain a minimum 3.0 grade point average, can be admitted to the engineering program of their choice at Texas A&M University (TAMU). In order to qualify for automatic admission at TAMU, students must complete a total of at least 42 credits from a degree plan, including required courses, maintain a minimum 3.0 GPA and meet all other general transfer admission requirements for transfer to TAMU.

This opportunity makes it possible for Laredo students to have access to one of the best engineering programs in the world.

For more information, please contact Dr. Ray Bachnak, Professor of Systems Engineering and Chair, Dept. of Mathematical and Physical Sciences, TAMIU or call (956) 326-2408, and email rbachnak@tamiu.edu

TAMIU Program: *Graduate Studies and Research*

Cont'd from page 2

Brown was chosen for this job based on his ability to analyze complex situations or processes, and simplify them in order to gain additional value from them. Brown is also fairly adept at using numbers and data to "paint a picture" of a situation or process, and present various scenarios based on the data.

Brown is an alumnus from Texas A&M University, '96 (Ph.D.) and '91 (M.S.), both in Cognitive Psychology; and Miami University '89 (B. A.), Psychology.

Texas A&M International University graduate students now have the opportunity to apply for scholarships thanks to the Lamar Bruni Vergara (LBV) Educational Fund. The LBV Educational Fund provides scholarships, assistantships and GRE/GMAT reimbursements to students who qualify. The LBV Trust was established in 1989. The legacy of its namesake continues through the enhancement of the Catholic Church, education and health institutions, and numerous local social service organizations.

After the passing of Laredoan Lamar Bruni Vergara, a Trust was formed to provide continuous support of the social, religious, health and educational initiatives of the community. This trust has provided gifts and support for the Dr. F.M. Canseco School of Nursing and its programs, student scholarships, faculty research, the Lamar Bruni Vergara Memorial Garden, and most recently, the Lamar Bruni Vergara Science Center and Planetarium. Trustees are Joe Martin, Jr. and Judge Solomon Casseb, Jr.

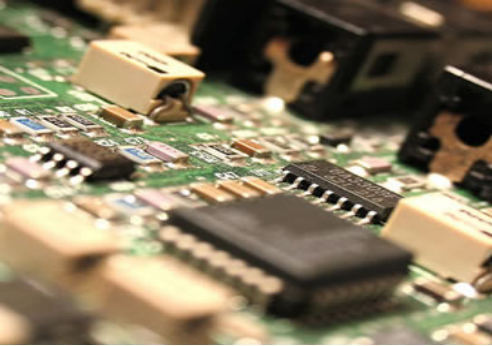
For additional information, contact Dr. Jeff Brown at 326.3020, graduateschool@tamiu.edu or visit his office in the Sue and Radcliffe Killam Library 332.

Below are links to application forms and information:

[Lamar Bruni Vergara Brochure](#)
[Scholarship Application](#)
[Assistantship Application](#)
[GRE/GMAT Reimbursement Application](#)
[Lamar Bruni Vergara Press Release](#)



Engineering Grads: Take a Different Route with Your Degree



This article is reprinted here with permission from jobpostings, available on college campuses, through personal subscriptions, or online at www.jobpostings.net. It may not be reprinted or electronically reproduced further without permission of the publisher.

Just because you have an engineering degree does not mean you have to be an "engineer." Engineering students are actually prepared for a lot of careers. With their strong problem-solving and critical thinking skills, grads are successful in a variety of fields outside the traditional engineering realm, specifically Law, as patent agents.

What is a Patent Agent?

To protect others from ripping off their creation, inventors apply to have their invention patented. Essentially a patent gives the inventor the exclusive rights to their new idea or invention for a set amount of time by protecting its public disclosure.

Patent agents typically deal with copyrighting inventions, and, generally speaking, deal with all classifications as opposed to specializing in just one. Classifications include utility, design, and plant and international patents.

Agents are responsible for reviewing patent applications, determining the protection needed, and, of course, for researching any similar inventions. After passing, 'the patent bar,' they can represent their client before the Patent Office. While they do deal with legal issues, they are not lawyers and cannot represent clients in court or provide any other legal services.

What skills and requirements are there?

Here comes the good news, being a patent agent does not require forking out mega bucks to attend law school! So, what kind of educational background do you need? Well, you need a strong technical background, a Bachelor's degree in natural science, or engineering, and, a license to patent.

To earn your license, you need to pass the United States Patent and Trade Mark Office (USPTO) exam, commonly referred to as the 'patent bar.'

For more information about the exam, go to www.uspto.gov

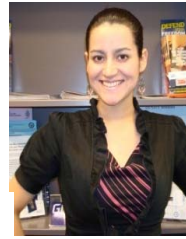
Finding a job

Though there are ample jobs available to graduates, competition can be fierce. Make sure your resume adequately represents you and your ability and aptitude.

Tips on Finding Your First Job

- **Get experience** - Internships, co-op assignments, or part-time work are all great experiences to have on your resume and they boost your chances of landing an awesome job.
- **Network** - Keep in touch with your alumni contacts to see if they can help with getting job interviews or give you any helpful leads.
- **Get Involved** - Contact professional organizations and perhaps join their student chapters online to stay in the know about job openings.
- **Check out industry job sites** - Take a look at these:
 - www.jobpostings.net
 - www.graduatingengineer.com
 - www.engineerjobs.com





Dress to Impress

First impressions are the most important to an employer. One of the first judgments to an interviewer is based on how professional your attire is. It is always important to dress professionally for a job interview, even if the work environment may be casual.

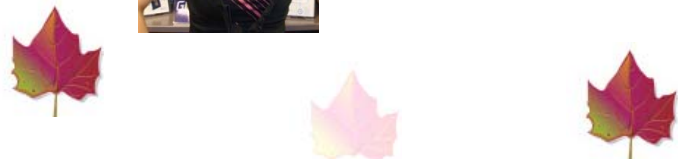
The candidate that is dressed in a suit and tie is going to make a much better impression than the candidate dressed in torn jeans and a t-shirt.

Fall wardrobe interview tips

- Don't wear bright colors
- Wear nice tailored suits
- Jacket combination with a simple blouse
- Try to wear season colors like brown, grey, beige, black, orange, navy blue, olive green, maroon, purple, red and dark yellow.

If you apply to a job that is more casual consider khakis, button-down shirts and belt. Make sure the color of your belt matches the color of your shoes.

Make sure you keep your interview accessories professional for instance, take a nice portfolio to carry your resume and other required documentation.





AUTUMN MUSIC FESTIVAL 2008 A TAMIU ALUMNI EVENT

Click here to get more information about AutMus Fest and to download the volunteer form
[AutMusVolunteerForm](#)

The McKee Educational Foundation Scholarship

The McKee Educational Foundation Scholarship will award \$11,000.00 in scholarship funds during the 2008-2009 academic year. The goal of the Foundation is to assist deserving individuals, who have both demonstrated financial need and academic promise, to be able to continue their undergraduate education.

The Foundation expects to award three (3) \$3,000.00 and two (2) \$1,000.00 scholarships in mid to late October. One half of the scholarship amount will be paid each semester of the current school year. The recipient must maintain the required academic average to receive the second installment. Deadline is September 26, 2008!

For more information and application instructions, contact the Office of Financial Aid or call 956.326.2225.

What else can I do on Dusty Works?

Check out the Vault where you can research companies and network with professionals.

If you are an alumnus, faculty member or employer, you can sign up to be a mentor, just email our office at careerservices@tamiu.edu and we can show you how to e-network with students.

You can sign up for CAREER EVENTS such as the HESTAC job fair, Graduate & Professional School Fair and other workshops sponsored by the Office of Career Services. Just login the system, go to the top of the page, and click on CAREER EVENTS.

Logon on to [Dusty Works](#) and check out these jobs:

Position

Program Director
2009 Teach for America Corp Member
Internal Revenue Agent
Music Instructor
Sales Position
COPD Specialist
Full-Time/Part-Time
Customer Service Associate & Data Entry Clerk
Police Officer Exam
Direct Sales Representative
Customer Service Representative
Account Manager
Brand Ambassadors/Internships

Employer

South Texas Council on Alcohol and Drug Abuse
Teach for America
Internal Revenue Service
Children's Fountain of Knowledge Learning Center
Mall Del Norte
South Texas Council on Alcohol and Drug Abuse
Best Buy
At Work Personnel
Laredo Police Department (see announcements section)
Time Warner Cable
TAMIU Bookstore – Follett
SwiftKick (contact careerservices@tamiu.edu)
PMG (contact careerservices@tamiu.edu)

Call us or stop by our office. We will be happy to help you logon the system and show you the newest features on Dusty Works. So let Dusty Works work for you!

Let Dusty Work for you!



The job outlook for graduates of 2008 appears promising as employers prepare to seek out the best and the brightest....

Excerpted from the [Black Collegian Magazine](#)--Each year, THE BLACK COLLEGIAN conducts a survey of major employers to determine the most active recruiters of college graduates. This survey results in our Top 100 Employers List, which is published in this, the Second Semester Super issue.

Employers were asked about the number of projected hires from on-campus recruiting and the number of campuses they are recruiting on. They were also asked to list the majors they are seeking.

According to Dr. Philip Gardner's [Job Outlook survey](#) included in this issue, large employers with more than 4,000 employees are aggressively pursuing college graduates this year - with 40,000 jobs up for grabs. In addition, employers are prepared to pay more, with 53 percent planning to raise salary offers by an average of 4.2 percent. Much of the growth in opportunities is due to baby-boomer turnover.

If you've completed internships, that investment just may pay off, as the largest expansion in hiring is expected to come from employers using applicants from their internship and co-op talent pools.

Rank	Employer	Total Hires	Campuses
31	Union County Public Schools	700	26
32	Macy's, Inc.	693	95
33	Procter & Gamble	690	80
34	GEICO	650	307
35	RSM McGladrey and McGladrey & Pullen	650	160
36	Halliburton	628	70
37	Cummins Inc.	600	40
38	Northwestern Mutual Financial Network	525	300
39	Yahoo!	450	12
40	Aetna	450	52
41	Hyatt Hotels Corporation	420	50
42	North East Florida Education Consortium	402	0
43	BAE SYSTEMS	400	60
44	Compass Group, North America	360	15
45	United States Steel Corporation	350	45
46	John Deere	340	40
47	Marriott International, Inc.	335	72
48	HDR	325	75
49	Harford County Public Schools	300	85
50	Turner Construction company	280	100

Some of the majors most in demand this year are civil engineering, environmental sciences, nursing, accounting, electrical engineering, marketing, business administration, finance, mechanical engineering, computer science, agricultural business, and mathematics. You should visit your career services office to determine if the employers listed in our survey are recruiting on your campus, and meet with a career counselor to plan a strategy for getting an interview with the employers of your choice. THE BLACK COLLEGIAN wishes you much success in your job search! The above list was excerpted from *The Black Collegian Magazine*. In the next issue we will publish another excerpt containing the next 50 top employers.



The Key to Success in Engineering? Professionalism

You're working hard at completing your engineering degree, and like thousands of others across the country, you're looking for a way to make yourself stand out to future employers. The question is how?

Job postings spoke with Bernard Berson, President of the National Society of Professional Engineers on how to set yourself up for success in engineering. Read on to see what Berson has to say?

1. What to do while in school

First things first. You need to focus on mastering the technical material you're being taught, of course. But, Berson also notes the importance of getting involved in extracurricular activities.

"Whether it's working for a paper or participating in the school government, students need to work on rounding themselves out to get beyond the technical skills that are being furnished in the classroom," he says.

Why is this so important? Because companies aren't just looking for technical skills anymore, they're looking for engineers who are team players and who demonstrate leadership ability.

2. Tips for building a skills base while in school

One of the most important things you can do, according to Berson, is to begin preparing yourself to become a good professional. Start familiarizing yourself with ethics and other important issues facing the industry. Berson also stresses the value of gaining leadership skills, whether through an internship or co-op placement or an extracurricular activity.

3. What to Do After Graduation

You've donned the cap and gown, you're officially an engineer now, right? **WRONG!** "College doesn't turn you into an engineer; it turns you into someone who can become an engineer. One of the most important things for a recent graduate is to focus on becoming a professional engineer."

What Makes a New Engineer Stand Out to an Employer?

Well, according to Berson, who ran his own engineering company for 30 years, the engineers who stood out, "were not necessarily the ones who did the best calculations, but the ones who showed an interest in promoting the best interests of the company, the ones who showed an interest in becoming true professionals, the ones who sought out membership in an engineering or technical society." He continues, "They were the ones who came into my office and asked what they could do to round themselves out."

Many employers want a well-rounded engineer who can do the calculations, yes, but also who can lead, who can be a member of the professional community, who cares about what laws are coming down the line for engineers, and who pays attention to the profession not just the job."

When you're further along in your career, mentoring is your opportunity to give back by helping the next generation of engineers.

4. Mastering the Technical Knowledge

Last, but certainly not least, you won't get far without really mastering the technical skills and knowledge necessary to succeed in your field of engineering.

This article is reprinted here with permission from jobpostings, available on college campuses, through personal subscriptions, or online at www.jobpostings.net. It may not be reprinted or electronically reproduced further without permission of the publisher.

"These Keys to Success are what I believe make a person not just a good worker, but a good professional, and which transcend the hands-on work." --- Bernard Berson



Welcome to UTPA's
Largest Expo Ever!

Sponsored by 



HESTEC CAREER Expo

Friday, Sept. 26, 2008
10 am-3 pm
UTPA Fieldhouse
and Wellness and Recreational Sports Complex

Job opportunities available for all majors.



University of Texas- Pan American and Texas A&M International University would like to invite, students, alumni, faculty and staff to the Valley's Biggest Job Fair on Friday, September 26th. Transportation will be provided FREE of charge to and from the event (limited to 47 persons). You will need to bring money for lunch. Style of dress is business casual. To sign up, email careerservices@tamiu.edu or via Dusty Works under CAREER EVENTS.