

Texas A&M International University
Emergency Quick Reference Guide

Fire:

1. Dial 2911 or 9-911(campus phone) or 326-2911 (cell phone) and report location and extent of fire.
2. Set off a fire alarm and alert building occupants.
3. Evacuate the building, using nearest available exit.
4. Do not re-enter building until given “all clear” by University Police.



Medical Emergency/Injury/Accident:

1. Check for safe conditions in area and assess victim.
2. Dial 2911 or 9-911 (campus phone) or 326-2911 (cell phone) for University PD. Provide essential information and follow Dispatcher’s instructions and remain on line.



3. While waiting, render whatever aid you can to victim and send someone to meet emergency personnel.

Weapons on Campus/Active Shooter:

1. If anyone brings a weapon into a campus building, dial 2911 or 9-911 (campus phone) or 326-2911 (cell phone) for University PD. Stay on line with Dispatchers if possible.
2. Remember...If possible:
 - A. **Get out** of the building and if possible **Call out** for help.
 - B. **Hide out** if imminent danger is near you
 - C. **Take out** assailant as an option of last resort



Violence or Threats

1. Dial 2911 or 9-911 (campus phone) or 326-2911 (cell phone) for University PD. Stay on line with Dispatchers if possible.



Chemical Spill

1. Make sure the scene is safe.
2. Dial 2911 or 9-911 (campus phone) or 326-2911 (cell phone) for University PD. Report location of Spill. University PD will contact Physical Plant and Environmental Health and Safety (EH&S).



3. If possible, alert others of spill and stay clear of area.
4. Do NOT attempt to clean spill if dealing with unknown substance.

Severe Weather

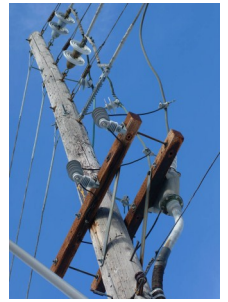
If severe weather (lightning, tornado, hurricane, wind storm) is reported or seen in area:

1. Seek shelter immediately, preferably away from windows. A middle hall or corridor is best.
2. Listen for emergency info through TAMIU's mass notification system or Dusty-ALRT.
3. Seek shelter until hazard has passed.
4. If trapped, dial 2911 or 9-911 (campus phone) or 326-2911 (cell phone) for University PD.



Utility, Water or Telecommunication Failure

Report any utility, water or telecommunication failure to TAMIU's Physical Plant by calling 2325 (campus phone) or 326-2325 (cell phone).



Missing Person(s)

If you believe someone may be missing:

1. Dial 2911 or 9-911 (campus phone) or 326-2911 (cell phone) for University PD. Stay on line with Dispatchers if possible.

Wildlife

If you encounter wildlife on campus:

1. Stay away (animals are not domesticated)
2. Do not feed animals

If you encounter an injured/abandoned animal, do not touch it or approach it. Also, please report snakes/bats to UPD by dialing 2911 or 9-911 (campus phone) or 326-2911 (cell phone).



Key Numbers

TAMIU University Police Department:

1. (956) 326-2911 (Dispatch)
2. (956) 326-2100 (Office)

TAMIU Physical Plant:

1. (956) 326-2325

TAMIU Environmental Health & Safety:

1. (956) 326-2194
 2. (956) 326-2756
- safety@tamiu.edu

TAMIU Student Health Services:

1. (956) 326-2236

TAMIU Office of Student Affairs:

1. (956) 326-2280

City of Laredo Police Department:

1. (956) 795-2800 or 911

City of Laredo Fire Department:

1. (956) 718-6000 or 911

Webb County Sheriff's Office:

1. (956) 523-4500

National Poison Center:

- 1-800-222-1222

Texas A&M International University

Emergency Notification Methods

TAMIU may use one or a combination of the following methods to deliver emergency notifications:

- 1. Mass Notification System**
- 2. DustyALRT**
- 3. Social Media (Facebook & Twitter)**
- 4. TAMIU Website**
- 5. TAMIU Uconnect Portal**
- 6. Building Emergency Coordinators (BECs)**
- 7. Local media and radio.**