



General TAMIU Information

TAMIU's campus represents more than a \$170 million investment in new facilities. You will take courses on the first new campus in Texas in over 20 years.

Our campus is situated in the heart of South Texas along the U.S.-Mexico border which affords you immense opportunities for international, comparative, and developmental studies. You will study in our new state-of-the-art classrooms and facilities.

Our classrooms and facilities incorporate the latest trends in the evolving Internet and information exchange. On-campus housing facilities are also wired for high-speed free Internet. Ten computer labs help assure that you will work in an environment where the student-to-computer ratio is 10 to 1.

You can also work in our modern media center to make multi-media and audio-video presentations while the University's Computer and Telecommunications Services department offers you extensive technology training.

Another essential element in your graduate study at TAMIU is the Sue and Radcliffe Killam Library, the cornerstone of our on-campus support centers, which recently completed a \$4.5 million addition to its collection.

How Do I Apply?

- Complete and submit University application to the Office of Admissions and submit undergraduate transcripts to the Registrar's Office.
- Download an application at <http://www.tamtu.edu/coas/gradstudies>
- Submit undergraduate transcripts to the Director of Graduate Studies.
- Have official GRE test scores sent directly from ETS.
- International students must also submit adequate TOEFL scores and financial documentation.
- Spring application deadline is November 1; Fall application deadline is April 1.

For more detailed information including program costs and courses, please visit or call:

Website: www.tamtu.edu/coas/psy/sociology.htm
E-mail: sociology@tamtu.edu
Telephone: 956.326.2475
Fax: 956.326.2474

TEXAS A&M INTERNATIONAL UNIVERSITY
COLLEGE OF ARTS AND SCIENCES



MASTER OF ARTS IN SOCIOLOGY



Texas A&M International University
College of Arts and Sciences
Office of Graduate Studies
5201 University Boulevard
Laredo, Texas 78041-1999

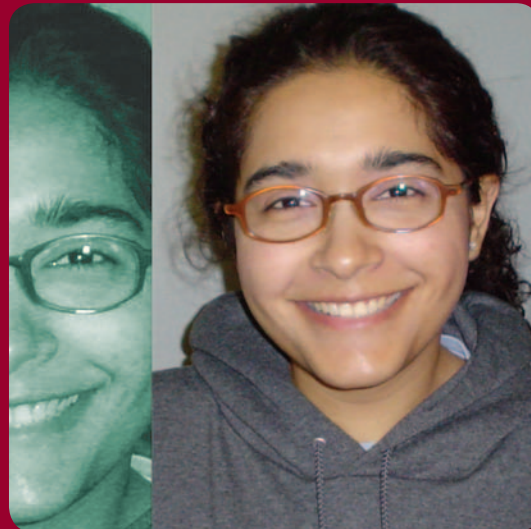


Master of Arts in Sociology

About Our Program

TAMIU's Sociology program seeks to develop your understanding of the dynamics of the social world. Our goal is to assist you in seeing the less obvious, by instructing you in the methods and observation techniques of social science. We seek to provide you with first-rate skills in critical thinking, research, problem-solving and writing so that upon graduation you will be qualified for professional advancement. Following the motto of our International Honor Society, Alpha Kappa Delta, we seek to inspire you "to investigate humanity for the purpose of service." Your MA in Sociology will enable you to play a vital role in the political, economic and social development of the region, state, and nation.

The Masters degree in Sociology requires that you complete 36 hours of graduate work for the non-thesis track and 30 hours for the thesis track. There are three essential core courses and thereafter you select courses that best meet your individual interests. You choose a minor in another discipline to complement your major. We offer a 4000 level class, the Professional Seminar (SOCI 4183), that fulfills the stem work needed for those who did not major in sociology as an undergraduate.



"The Sociology department at TAMIU has contributed greatly to my interests and studies of people and society. My dedicated professors have helped me gain a plethora of knowledge throughout my undergraduate and graduate career at TAMIU. Thanks to their encouraging efforts, I look forward to continuing my studies in Sociology this Fall at Texas A&M- College Station, were I have recently been awarded the Pathways to Doctorate Fellowship."

Lorena Murga
Sociology Graduate Student

Why Should You Come Here?

Texas A&M International University, the newest and one of the fastest growing in the A&M University System, is situated in the heart of South Texas along the U.S.-Mexico border that offers immense opportunities for international, comparative, and developmental studies. Our new state-of-the-art facilities, especially the ultra modern Student Center and Center for the Fine and Performing Arts, provide our students with a congenial environment to develop themselves fully as skilled and conscientious professionals.

About Our Faculty

Our full time Ph.D. faculty has diverse interests and skills. We are dedicated to applying sociological analyses to further our understanding of the local environment and South Texas. Areas of faculty interest include but are not limited to: border issues, GIS (geographic information systems), spatial

analyses, family violence, education, research methods and urban development, all through the lens of race, class and gender.

Careers

A Master's degree in Sociology prepares you for many different careers in public and nonprofit organizations, as well some private organizations that interact with government and other public agencies including careers in business, state, local and federal government, international organizations and finance. A Master's degree in Sociology is an ideal major for careers in the following areas:

Local Government

- city management
- financial administration
- budget analysis
- general services
- community affairs

Environment

- natural resource management
- environmental policy
- environmental materials

Federal Government

- professional
- administrative
- technical

International Affairs

- international business
- education
- communication
- international health
- policy

Health/Medical

- health care administration
- personnel/human resources

Non-Profit Sector

- feasibility and impact assessment
- program planning and evaluation
- personnel training and development

Business

- personnel/human resources
- project monitoring
- management
- sales/marketing