

# Floor Plans & Rates

## University Village

The following installments are based on an individual liability lease and are listed per bedroom/per person. All accommodations are fully furnished.

For more information visit our website <https://www.tamui.edu/housing>

### Utilities Included:

Electricity  
Internet  
Water  
Sewer  
Trash  
Cable Tv

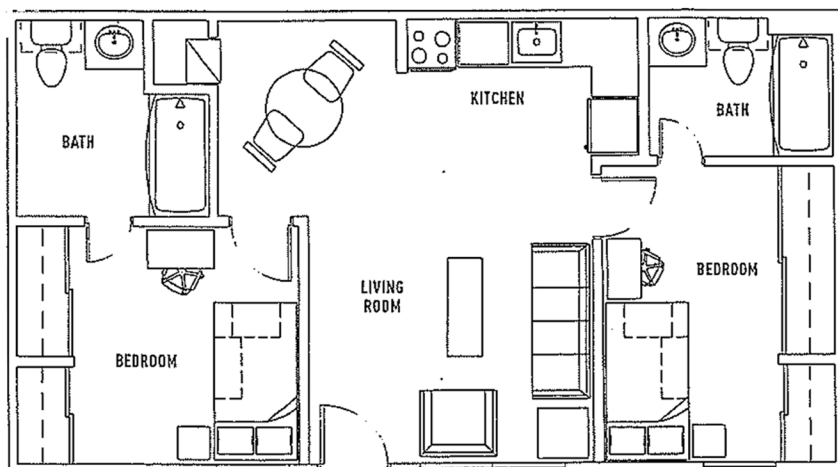
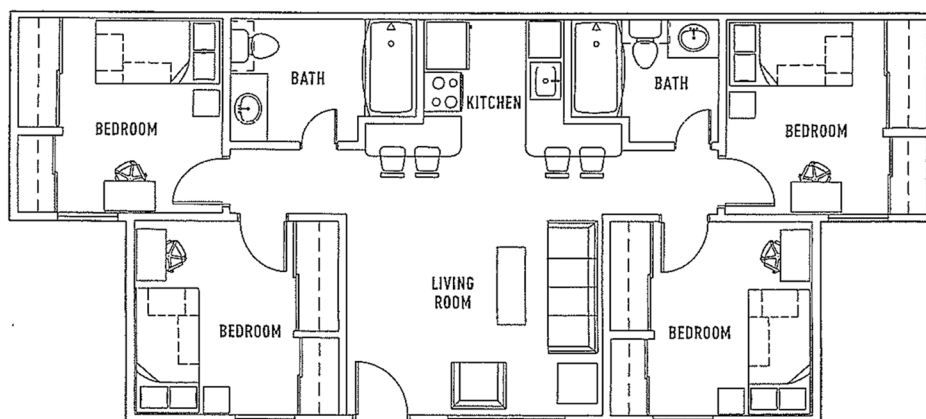
### Scan to Apply



### 4 Bed - 2 Bath

Private Bedroom, Shared Bathroom

\$3,240 Per semester



### 2 Bed - 2 Bath

Private Bedroom, Private Bathroom

\$4,325 Per semester