

Fall 2009

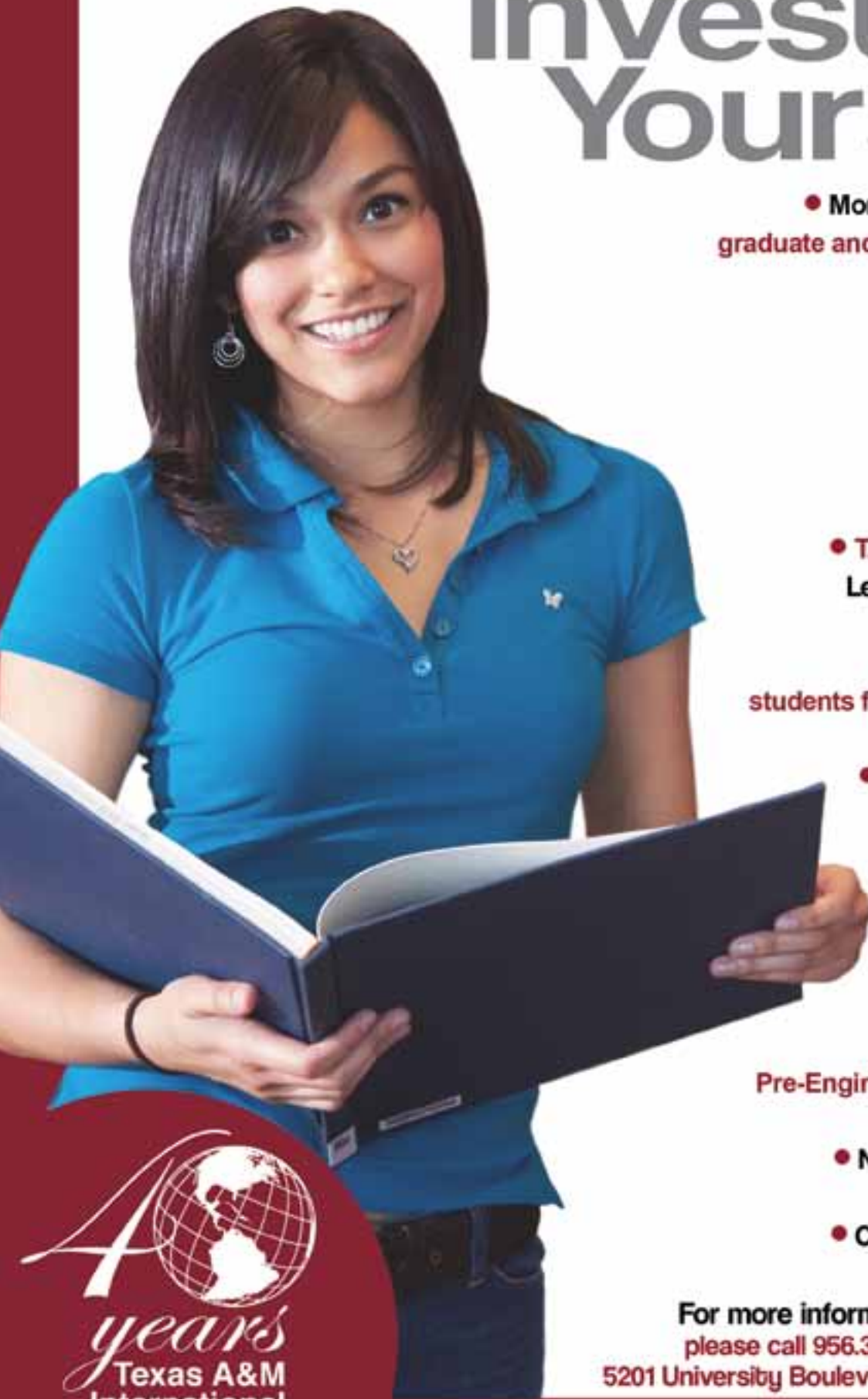
prism

The Magazine of Texas A&M International University



Texas A&M International University

Invest ⁱⁿ Yourself



- More than 70 undergraduate, graduate and doctoral Degree Offerings

- Over 77% of students receive Financial Aid

- A Gifted Faculty from all over the world

- TAMIU is one of the State's Least Expensive universities

- Diverse Student Body, students from here and everywhere

- Females: 62% Males: 38%

- Study Abroad make the world yours

- On-Campus Housing

- Pre-Med, Pre-Dental, Pre-Engineering, Pre-Law Programs

- NCAA II Dustdevil Athletics

- Cultural Events on campus!

For more information or a campus tour,
please call 956.326.2270 or visit tamiu.edu
5201 University Boulevard, Laredo, TX 78041-1900



Prism Magazine:

Dr. Ray M. Keck III, President

Candy Hein, Publisher

Editor: Steve Harmon ('91)

Art Director: Ana P. Clamont ('00)

Contributing Photographers:
Ana P. Clamont, Catarina Colunga,
Dan Lathey, Rebecca M. Martínez ('08),
Eugene Ruiz, Daniel Tijerina

Contributing Writers:
Mika Akikuni ('02), Melissa Barrientos-
Whitfield, Steve Harmon, Dr. Ray Keck III,
Rebecca M. Martínez,
Jessica Rodríguez, Senator Judith Zaffirini

Cover Photo Illustration:
Ana P. Clamont

CHANGE OF ADDRESS ONLY:
Please send to
Office for Institutional Advancement
5201 University Boulevard
Laredo, Texas 78041-1900
Telephone: 956.326.4483
Facsimile: 956.326.2174
E-mail: prism@tamiu.edu
If you receive duplicate copies,
kindly send both mailing labels
to the above address.

OTHER MAGAZINE QUERIES:
Please send to
Prism Magazine
Office of Public Relations, Marketing
and Information Services
5201 University Boulevard
Laredo, Texas 78041-1900
Telephone: 956.326.2180
Facsimile: 956.326.2179
E-mail: prism@tamiu.edu

All contents © 2009 *Prism Magazine*,
except where noted. Opinions
expressed in *Prism* are those of the authors
and do not necessarily reflect
the opinions of its editors or policies of
Texas A&M International University.

POSTMASTER:
Send address corrections to
5201 University Boulevard
Laredo, Texas 78041-1900.

MISSION: *Prism* is published twice a
year for Texas A&M International University
friends. By highlighting the University's life and
its programs, faculty, students and alumni, *Prism*
reflects the diverse educational excellence of
Texas' fastest growing University.

Texas A&M International University is
committed to the preparation of students for
leadership roles in their chosen profession
and in an increasingly complex and culturally
diverse state, national and global society.



INSIDE THIS EDITION

2



4



10



14



PRESIDENT'S THOUGHTS 2 MAKING THE IMPROBABLE REAL

OUR CAMPUS 4 NEW THEATRE BOWS WITH 'MAN OF LA MANCHA'

ANNUAL GIVING 16

READING THE GLOBE 8 'A LONG WAY' IS SECOND ENTRY IN TAMIU READING INITIATIVE

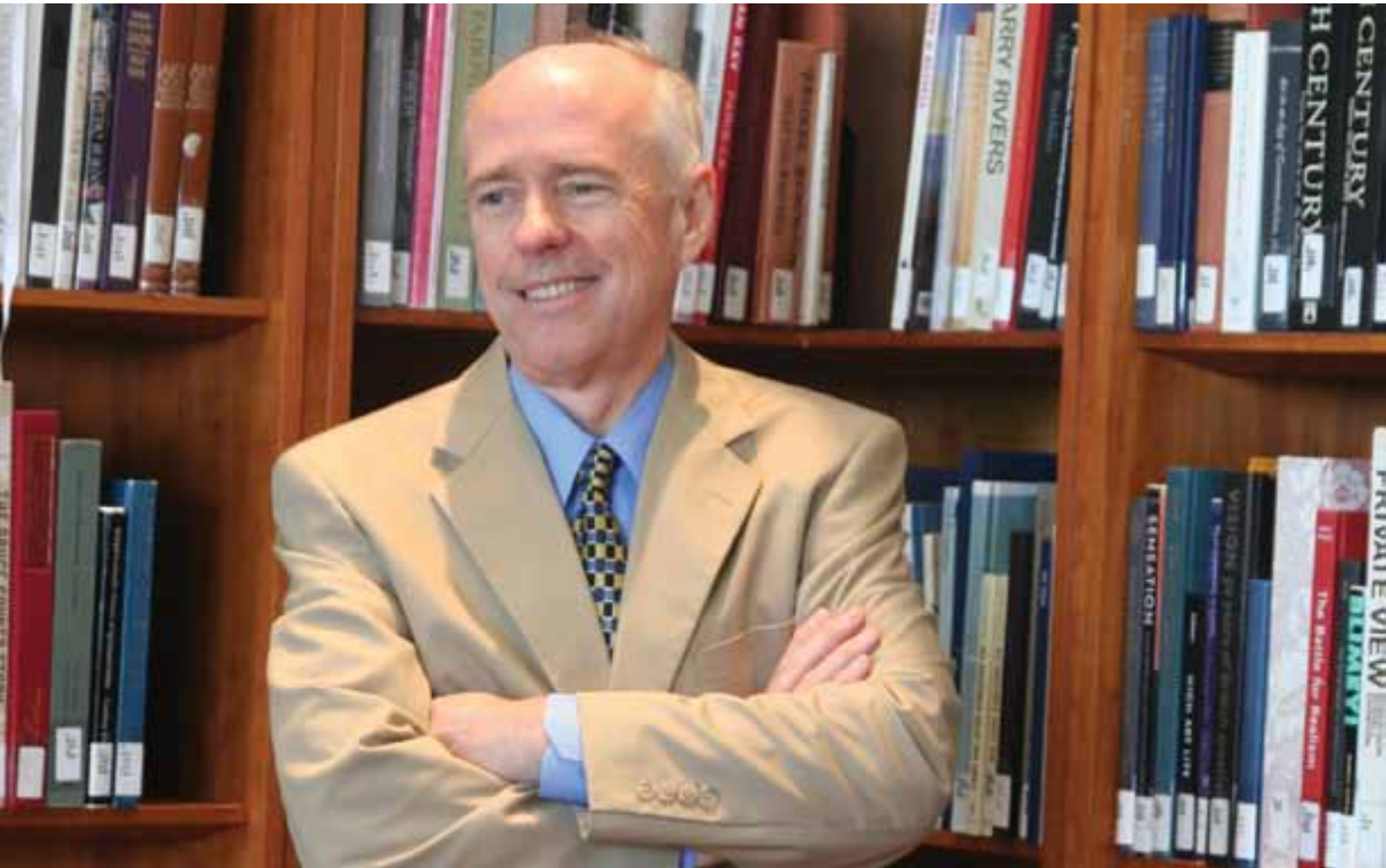
40 YEARS 10 A LIFETIME OF CHANGE, A LEGACY OF IMPACT

OUR LEGACY 14 KILLAM LIBRARY SPECIAL COLLECTIONS AND ARCHIVES

WELCOME OUR NEW FACULTY 6

UNIVERSITY NEWS AND LIFE 21

NOMINATIONS OPEN FOR ALUMNI AWARDS 22



40 YEARS LATER: MAKING THE IMPROBABLE REAL

Since its appearance as a play in 1959 and then as a Broadway musical in 1965, “Man of La Mancha” has brought to a popular audience the enduring central message of Cervantes’s masterpiece. The impossible dream. Identity is a made thing. We can decide what and whom we will be. Hearts and minds can change and, even if the Earth does not move, the human spirit can soar far beyond its meager clothing of flesh, its bounded identity in time and place. We can even experience, against all rational expectations, reality altered by the power of the spirit, the conviction of the soul.

But the process is not an easy one. A quotidian dullness neutralizes heroic action; the hungry soul imagines dreams and truth to be one. In one of his first sallies, don Quijote, ablaze with the dream of his beautiful lady, stops a group of merchants on their way to market in Toledo and demands that they share his faith.

“What matters is that without seeing her (Dulcinea), you are to believe in her beauty, to confess, affirm, swear, and defend it. If not, I challenge you to combat,” don Quijote tells the startled merchants. Stupefied, the merchants ask before they are to swear for a picture of Dulcinea: “A small one will do, even if it is the size of a grain of sand.” Enraged at their insistence that a dream must assume a palpable presence before it can be acted upon, don Quijote charges the group. His nag stumbles. He falls and suffers a sound thrashing at the hands of a strong and slightly irritated young man.

A university is about an imagined future, a dreamed identity, a new life, laid hold of slowly as a student pursues his or her studies. It was a dream of new life for all South Texas that created Texas A&M International University. Long before Governor Ann Richards turned that initial spade of dirt in February 1994, Laredoans and South

“Hearts and minds can change and, even if the Earth does not move, the human spirit can soar far beyond its meager clothing of flesh, its bounded identity in time and place.”

Dr. Ray M. Keck III, President

Texans first imagined a better way and then, like don Quijote, set about to bring it into being. The obstacles, far more formidable than the merchants don Quijote faced, were attitudinal, material, political, a cyclical pattern of exclusion that had long kept the dream of higher education for this region a seemingly impossible one.

Like don Quijote, citizens and elected officials continued to push and to press, to rage and to insist, to plot and to promise, until the dream of new life began to acquire a body. And that body, this magnificent new campus, continues to grow and develop: hope given corporeal form, no longer impossible, just enormously difficult to create.

As we celebrate our 40th year, reflections upon the creation of Texas A&M International University assert forcefully a lesson well-known to Cervantes. The larger and more improbable, the more pharaonic the dream, the greater the possibility that it may become true. The task to build this University, the zeal to see it become real, awakened in Laredo both an energy and strength beyond anything seen since colonial days. Our legislators in Austin and leaders and philanthropists in the Laredo community imagined what could not be, and it was.

When contemplating our Laredo miracle, gazing over the beauty of these marvelous and *fermosas salidas*, a wise man captured well the dream, its challenge, and its fruition.

“It must be,” he said, “that the first 250 years are the hardest.” ■



Dr. Ray M. Keck III,
President

An impossible dream comes true this October at Texas A&M International University as the beloved musical “Man of La Mancha” inaugurates the new Center for the Fine and Performing Arts Theatre Oct. 15-18.

Dale Wasserman’s musical adaptation of his non-musical teleplay will be presented by the Laredo Theatre Guild International as part of the University’s 40th Anniversary Celebration.

Inspired by the 17th century masterpiece “Don Quixote” by Miguel de Cervantes, it details the adventures of “Don Quixote de la Mancha” and his weary “squire,” Sancho Panza.

The winner of five Tony Awards, it has been revived on Broadway four times, performed around the world, and was the basis for a popular movie starring Peter O’Toole and Sophia Loren (1972).

UPCOMING 40TH ANNIVERSARY EVENTS

Oct. 14

New Theatre Ribbon Cutting / Champagne Toast
6:30 p.m.

Center for the Fine and Performing Arts Theatre (CFPA)

Oct. 15-17

“Man of La Mancha”

Laredo Theater Guild International
7:00 p.m.

CFPA Theatre

Oct. 18

Matinee – “Man of La Mancha”

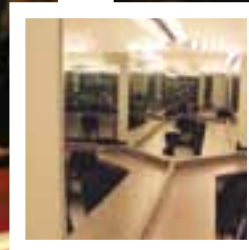
3:00 p.m.

CFPA Theatre

For additional 40th Anniversary events, go to @TAMIU, our online calendar, available at tamiu.edu. Click on 40th Anniversary for an updated listing of year-round activities! ■



Written by Dale Wasserman • Music by Mitch Leigh • Lyrics by Joe Darion • Original Production Staged by Albert Mann • Originally Produced by Albert W. Selden and Hal James
Produced by arrangement with, and musical and dialogue material furnished by TAMS-WITMARK MUSIC LIBRARY, INC., 560 Lexington Ave., NY, NY 10022



NEW THEATRE BOWS THIS FALL AT TAMIU

If all the world's a stage, then this fall there's a global addition to Texas A&M International University, with the opening of the new Center for the Fine and Performing Arts Theatre.

The 472-seat theatre takes its bow as a state-of-the-art performance venue with a special production of "Man of La Mancha" in collaboration with the Laredo Theater Guild International, part of the University's 40th Anniversary Celebration.

Bede Leyendecker, chair of the College of Arts and Sciences' department of fine and performing arts, said the new theatre affords a remarkable setting for the University's drama, musical theatre and dance productions.

"It's an incredibly spacious stage, but there's a real intimacy in the seating. I think our audiences are going to be dazzled by the venue, and equally impressed by the caliber of productions we'll now be able to accommodate," she said.

"It's also a great place for us to nurture our theatre and dance programs and a fine home for our collaborative efforts with the Laredo Philharmonic Orchestra, Laredo Philharmonic Chorale, and our latest collaboration with the Laredo Theatre Guild International, which is making the theatre its new home," she added.

The cavernous theatre features a three-story fly space, a proscenium-style stage with trap door and a hydraulics-powered descending stage and orchestral pit.

A complex lighting system, including more than 250 lighting units, provides an impressive array of lighting possibilities and effects. The theatre's sound system is a state-of-the-art Yamaha Digital System with some of the most advanced technology available in south Texas.

Both are located within the theatre, providing the University's theatre staff with ideal control of all effects and capabilities. ■



Laredo Theater Guild International founders with Dr. Ray Keck (left to right) Joe Arciniega, Hortense Offerle, Dr. Keck and Sam Johnson.



CHAIR OF THE SENATE HIGHER EDUCATION COMMITTEE, Senator Judith Zaffirini, Ph.D., is the highest-ranking senator for the border region and Bexar County. For the first time in the history of the Texas Senate, higher education issues were addressed exclusively by a full committee.

2009 LEGISLATIVE SESSION A SUCCESS FOR HIGHER EDUCATION

by Senator Judith Zaffirini, Ph.D.

Higher education leaders in general and those for Texas A&M International University in particular had much to celebrate when the Texas Legislature adjourned on June 1. Our actions were particularly important as our university celebrates its 40th Anniversary and considers new and exciting ways to deliver its mission.

As Chair of the newly upgraded Senate Higher Education Committee, I prioritized legislation that increased access to higher education, improved student success and enhanced excellence at our universities and community colleges.

To address one of the most controversial issues of the session, the rising cost of tuition and fees, I authored Senate Bill (SB) 1443, which would have defined the shared responsibility among students and their families, the legislature and institutions to keep higher education affordable and accessible without sacrificing excellence. It would have capped total academic costs and linked them to formula funding.

Because the bill exempted from caps universities whose total academic costs were below the state median, TAMIU would not have been impacted. The Senate passed my bill unanimously with the support of Lt. Gov. David Dewhurst, R-Houston, and with 26 co-sponsors, but it died in the

House of Representatives during the explosive Voter ID debate.

Throughout the session we intensified our emphasis on prioritizing excellence and increased funding for all Texas universities.

My SB 9, the companion to House Bill (HB) 51 that I sponsored, for example, began with a focus on research for seven universities. It developed into a bill about excellence in higher education, with additional funding opportunities for all public universities in Texas.

Our new law focuses on student success, centers of excellence and the development and maintenance of excellent fields of study and programs. It offers matching funding for research expenditures and promotes research at the graduate and undergraduate levels.

It also provides \$80 million in incentive funding for universities to increase the number of degrees awarded; and the number of degrees awarded to at-risk students and in critical fields, thereby reducing time-to-degree while simultaneously improving our workforce and the economy of the region. Because of its high-quality student success programs, TAMIU should secure some of these funds.

HB 51 also provides incentive grants for comprehensive universities, including TAMIU, that demonstrate success in developing or improving a

designated program or field of study.

Because undergraduate research programs improve student retention and graduation rates while increasing students' likelihood to pursue graduate studies, I authored and passed SB 44, which provides research opportunities for undergraduate students. My hope is that this new law will help prepare our future faculty by improving student success, especially by involving more students at TAMIU in research activities.

Impressively, during a difficult economy, funding for higher education was increased by \$1.5 billion, 6.9 percent, for 2010-11. TAMIU's funding was increased by \$4.8 million, 8 percent. In spite of strong opposition, because Lt. Gov. Dewhurst intervened, TAMIU received an additional \$2 million for student success in the supplemental appropriations bill.

The interim at-hand provides us opportunities to build upon our successes and to develop additional policies to enhance quality, improve student success and increase access. I look forward to working with President Ray Keck and other leaders, including students, to ensure that Texas A&M International University continues to grow and to excel.

My prayer is that our next 40 years will be even more productive and exciting! ■

OUR NEW FACULTY

The 2009 Fall semester sees the University welcome 33 new faculty members to its three Colleges and School. These latest additions to our gifted faculty come to us from all around the country and world, providing remarkable learning and research opportunities for our students and community at large.

A.R. Sanchez, Jr. School of Business



Dr. R. Stephen Sears
Dean, Killam Professor of Finance
Ph.D. University of North Carolina



Dr. George R. G. Clarke
Killam Distinguished Associate
Professor of Economics
Ph.D., University of Rochester



Robert Evans
Visiting Assistant Professor of Marketing
M.B.A., Murray State University



Dr. Paul Madlock
Assistant Professor of
Business Communication
Ph.D., West Virginia University



Dr. Abhijit Patwardhan
Assistant Professor of Marketing
Ph.D., University of Mississippi

College of Education



Sandra Garrett
Associate Professor of
Curriculum & Instruction
Ed.D., University of North Texas-Denton



Mayra Lee Peña
Assistant Professor of Teacher Preparation
CPDT Director
M.S., Texas A&M International University



Dr. Lynn M. Hemmer
Assistant Professor of Educational
Administration
Ph.D., Texas A&M University-
College Station

University College



Veronica Garza
Instructor of Freshman Seminar
M.B.A., St. Edward's University

College of Nursing and Health Sciences



Dr. Regina C. Aune
Dean, Professor of Nursing
Ed.D., University of Utah



Rita Haber
Clinical Assistant Professor of Nursing
M.S.N., Texas A&M International University



Jessie M. Mena
Clinical Assistant Professor of Nursing
M.S.N., Texas A&M University-
Corpus Christi



Dr. Rosemary Plank
Associate Professor of Nursing
Director of the PROF Center
Ph.D., University of California-
San Francisco



Dr. Alfred K. Addo-Mensah
Visiting Assistant Professor of Chemistry
Ph.D., Florida Atlantic University



Dr. Alison L. Bory
Visiting Assistant Professor of Dance
Ph.D., University of California-Riverside



Dr. Manuel Broncano-Rodríguez
Chair, Language and Literature
Professor of American Literature
Ph.D., University of Salamanca



Dr. Irma L. Cantú
Assistant Professor of Spanish
Ph.D., University of Texas at Austin



Dr. Anna B. Cieslicka
Assistant Professor of Psychology
Ph.D., Adam Mickiewicz University



Dr. John E. Dean
Visiting Assistant Professor of English
Ph.D., Indiana University of Pennsylvania



Dr. David García
Assistant Professor of Music
Ph.D., Ohio State University



Michael P. Harrington
Visiting Assistant Professor of
Criminal Justice
M.S., University of Wisconsin-Milwaukee



Dr. Michael R. Kidd
Assistant Professor of Biology
Ph.D., University of New Hampshire



Mark A. Menaldo
Visiting Assistant Professor
of Political Science
B.A., Colorado College



Dr. Mónica O. Méndez
Assistant Professor of Biology
Ph.D., University of Arizona



Dr. David K. Milovich
Assistant Professor of Mathematics
Ph.D., University of Wisconsin-Madison



Dr. Young-Man Kim
Visiting Assistant Professor
of Engineering
Ph.D., Wichita State University



Andrea L. Moon
Visiting Assistant Professor of Art
M.F.A., Texas Tech University



Jerry Quintero
Visiting Instructor of Music
M.S., Texas A&M International University



Joaquina M. Reed
Visiting Instructor of Communication
M.A., University of
Louisiana - Monroe



Megan Smith
Visiting Instructor of Communication
M. A., University of
Louisiana - Monroe



Dr. Penny Vlagopoulos
Visiting Assistant Professor of English
Ph.D., Columbia University

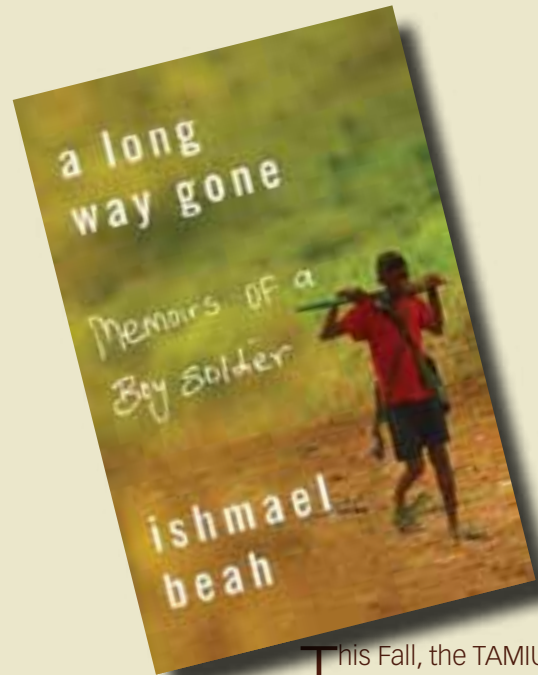


Brittan Anne Wilson
Assistant Professor of Biology
Ph.D., University of Massachusetts-Boston



Shudong Zhang
Visiting Assistant Professor of
Criminal Justice
M.A., University of Missouri-Columbia

'A LONG WAY' SECOND ENTRY IN TAMIU READING INITIATIVE



This Fall, the TAMIU "Reading the Globe" campus-wide reading initiative shares the harrowing journey of a 12-year-old boy from Sierra Leone who becomes a front-line refugee as civil war injustices shadow his young life.

"A Long Way Gone" is being read by all entering TAMIU freshmen and the campus community. Its insight will be shared in classes, conversation and during a special visit to TAMIU by its acclaimed author, Ishmael Beah.

After a competitive essay contest, a select group of TAMIU freshmen will have an opportunity to travel to Ghana to explore this remarkable part of the world.

Last year, the first in the "Reading the Globe" program, the campus read Gerda Weismann Klein's "All But My Life." A group of 15 students traveled to Poland to visit the book's setting. Their experience is documented at <http://www.tamtu.edu/spotlight/poland>.

Travel for the Poland group was made possible by the University's International Education Fee Scholarship and generous gifts from the Guadalupe and Lilia Martínez Foundation and the Rosendo A. and Mary Kathryn Carranco Family.

The University is actively seeking partners to help support this year's study travel program.

To learn more, contact the University's Office for Institutional Advancement at 956.326.GIVE, e-mail chein@tamtu.edu or click on tamtu.edu/adminis/vpia/ ■

SERVICE DOGS ON CAMPUS AT TAMIU THIS FALL

There are some new faces on campus this Fall at Texas A&M International University and they're quite furry. They're TAMIU students' service dogs.

A service dog is a specially trained assistance dog that is trained to perform tasks to help a person who has a disability. The addition of assistance dogs to the campus has prompted an on-campus change in etiquette.

When coming in contact with service dogs it's important to follow certain etiquette, because you're not dealing with just a dog, explained Rita Hernández, counselor, TAMIU Office of Student Counseling Services.

"It's proper etiquette to speak to the service dog owner before thinking of greeting the dog. It is also not in the best interest to pet the service dog or touch its owner without asking permission. Touching the service dog might distract it from its work and touching the person might be interpreted as an assault by the service dog, explained Hernández.

Hernández said there are certain things one should do when approaching a service dog.

"When coming across the service dog, please resist the temptation to treat the service dog as you would a regular pet. Refrain from offering the dog treats or making noises such as barking, meowing, whistling, and making any other rude noises, it just makes you look silly," she said.

"At TAMIU we aim to foster greater awareness both of, and for, persons with disabilities in our multilingual, multicultural and international environment," said Hernández.

"Counseling and Disability Services for Students at TAMIU combines its efforts to help students with challenges and disabilities to complete their academic career. Services have been created to make sure that every attempt is made to grant equal access to students with permanent or temporary disabilities, explained Hernández.

For more information, about service dogs at TAMIU, call the Office of Counseling and Disability Services for Students at 326.2230, or visit offices located in the Student Center, room 124. ■

NEWS



Technology Helps Students Connect and Community Connect

Starting this semester at Texas A&M International University, students can reach University services through a single doorway; community members and visitors can be instantly alerted to the riches of the University's cultural and artistic offerings and anyone can make purchases or donations without ever leaving the comfort of home.

Through an aggressive embrace of technology, the University has placed itself shoulder-to-shoulder with the nation's top universities as all work to effectively increase availability, boost responsiveness and underscore relevance.



That technology includes:

The University's portal entry to

University content and services for enrolled students, faculty and staff. Uconnect truly connects the campus community through strategic, targeted messaging, self-tailored content and single-point access to University services.



The University's online event calendar, gives visitors a chance

to make a date with a robust calendar that can be downloaded to one's desktop, send e-mail or text alert reminders or provide RSS feeds.

@TAMIU: <http://www.tamiau.edu/calendar/>

Market Place



The University's online store, it provides an opportunity for visitors to review and purchase merchandise or make a contribution to the University.

So get to your keyboard, click your mouse and bring your University home.

New Home for TAMIU Student Success Coming

In the summer of 2010, Texas A&M International University students will find a new Student Success Center that will function as their primary entry point to the University.

Being built at an approximate cost of \$25 million, the new Center will centralize offices for the University's Admissions, Financial Aid, Bursar, Enrollment Management/Recruitment Office, Bookstore, Registrar, OneCard, Dean for Student Success, Testing Center, University College and First Year Success offices and programs. These offices are currently housed in three different buildings around campus.

The first floor of the Student Success Center is styled as an "information mall" with storefront-style offices facing a central, light-filled corridor.

"It's going to be a spectacular building that celebrates students and clearly addresses their needs with open, welcoming spaces," said Dean of Student Success Dr. Minita Ramirez. "The first floor is a central communications hub that provides support and directs students to the appropriate service office. This area also includes computer kiosks and seating areas. We'll also have multi-purpose rooms that can be easily reconfigured to accommodate a variety of needs," she continued.

Of special interest is that the new Student Success Center is being designed to Leadership in Energy and Environmental Design (LEED) Silver standards — powered in part by solar panels on the west side of the building and incorporating an educational exhibit on solar energy.

With the opening of the Student Success Center, the current Student Center will see campus bookstore and food service areas expanded to provide additional store and seating capacity respectively.





40 Years: A Lifetime of Change, A Lega

While every anniversary is important, there's something especially powerful about the 40th Anniversary of a University. The arc of years in a University's life easily encompasses generations of students, faculty and thousands of lives measurably changed.

For Texas A&M International University, the 40-year span of history has propelled South Texas forward and advanced both individual lives and the overall quality of life for the region.

From its initial inception in a study carrel at the former

Laredo Junior College to a pair of buildings at the West End of Washington, and the eventual construction of a new cherished campus in northeast Laredo, the University's default has been change...some days on a daily basis.

Locations aside, there have been some other changes:

Name Changes: Texas A&I University at Laredo...Laredo State University...Texas A&M International University.

Mission Changes: The University moved from a hybrid upper-division University only offering junior, senior and



cy of Impact

graduate study to a full four-year University.

And then there are changes that have elevated the University's role and presence.

Now, a mascot cheers on an NCAA Division II Athletics Program with 11 sports teams. Honors Programs flourish and the '09 entering freshmen class includes students from 75 regional high schools and 32 countries. Early Medical School and professional school admissions programs are well-established and students now have access to the University's

first Ph.D. degree in International Business and four other doctoral programs offered in collaboration with other members of the Texas A&M University System.

The 40th Anniversary also encompasses some of the University's struggles and challenges: efforts to expand programs that bucked the standards of the day; to make a voice for South Texas heard in important funding discussions; to rally public support when the first drumbeats of possible closure began to sound.

(continued on p. 12)

(continued from p. 11)

At every juncture, University, students, faculty, staff, alumni and community partners joined hands and strengthened their commitment to a future that would always include Laredo's university.

It's no mistake that one of the most visible events of the 40th Anniversary Celebration will be the presentation of the time-honored classic, "Man of La Mancha," in an impressive new theatre that anchors the University's Center for the Fine and Performing Arts.

While no windmills tilt on campus, Don Quixote's impossible dream has special resonance for a University that has indeed had its challenges, but clearly has earned its triumphs and made possible many dreams. ■



1969

Community members traveled to Austin with 8,000 signatures, seeking a branch or center of Texas A&I University Kingsville at Laredo. Within months, State Representative Honore Ligarde pushes a bill through the House of Representatives, creating the Center.



1970

Texas A&I University at Laredo opened its doors as the first upper-level institution in the State of Texas. 286 students registered.

1978



Sept. 1, The University officially becomes Laredo State University.

1990

Set to enter its third decade, the University welcomes the donation of 200 acres of land in northeast Laredo for a new campus. Sue and Radcliffe Killam's donation would eventually grow to 300 acres.

TAMIU 2009 ECONOMIC IMPACT

Impact Factor	Jobs	Income	Jobs	Income	Jobs	Income
Employees & Payroll*	1,075	34.8m	773	19.3m	1848	54.1m
Expenditures – Operations & Maintenance*	---	11.2m	249	6.2m	249	17.4m
Expenditures – Construction *	258	18.6m	413	10.3m	671	28.9m
Student Spending*	---	5.7m	127	3.2m	127	8.9m
Visitor Spending*	---	1.3m	29	0.7m	29	2.0m
Total	1,333	71.6m	1,591	39.7m	2,924	111.3m

*Assuming that 85% of spending is local, 15% outside of Laredo/Webb Co. area

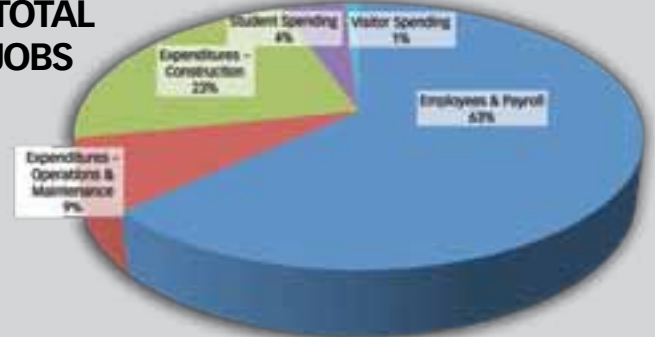
TAMIU employees: 1,075 (636 full-time, 439 part-time)
 TAMIU payroll: \$40.9 million
 TAMIU expenditures on operations & maintenance: \$13.2 million
 TAMIU expenditures on construction: \$21.9 million
 Student enrollment: 5,707
 Student spending: \$5.7 million
 Visitor spending: \$1.3 million
 TAMIU Alumni living in Laredo/Webb County area: 8,643

Summary

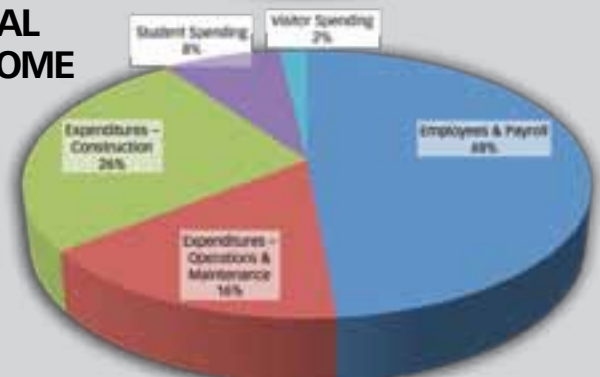
In 2009, TAMIU economic impact (direct and indirect) on Laredo included 2,924 jobs and \$111.3 million. Through the “multiplier effect” employee, student, and visitor spending and university expenditures on operations and maintenance and construction during 2009, TAMIU created an additional 1,591 jobs and \$39.7 million in spending in Laredo.

TAMIU’s economic impact on Laredo results from (direct) employee spending and university expenditures (for operations and maintenance and construction) on goods and services provided by local businesses. Local businesses engage in subsequent (indirect) rounds of spending to produce and provide the goods and services purchased by TAMIU, further stimulating the local economy through the “multiplier effect.”

TOTAL JOBS



TOTAL INCOME



(Data analysis provided by Dr. Michael Patrick, Faculty Emeritus)



6



7

- 1) The Kazen College Center at then-Laredo Junior College was a hub of shared life for Texas A&I University at Laredo and Laredo State University. (1978)
- 2.) University Hall was one of two buildings owned by then-Laredo State University at the West End of Washington Street. (1982)
- 3.) Construction cranes at work on the Sue and Radcliffe Killam Library as Texas A&M International University begins to grow. (1994)
- 4.) A rarely seen view of the centerpiece of the Killam Library, a two-story apse that fronts the Great Room. (1994)
- 5.) The Center for the Fine and Performing Arts, a Phase III addition, shines like a beacon in the night. (2003)
- 6.) Workmen add the luminous pearl-like coating to the Planetarium Dome that anchors the Lamar Bruni Vergara Science Center. (2005)
- 7.) Leaders gather to break ground on the Kinesiology and Convocation Center (2006)

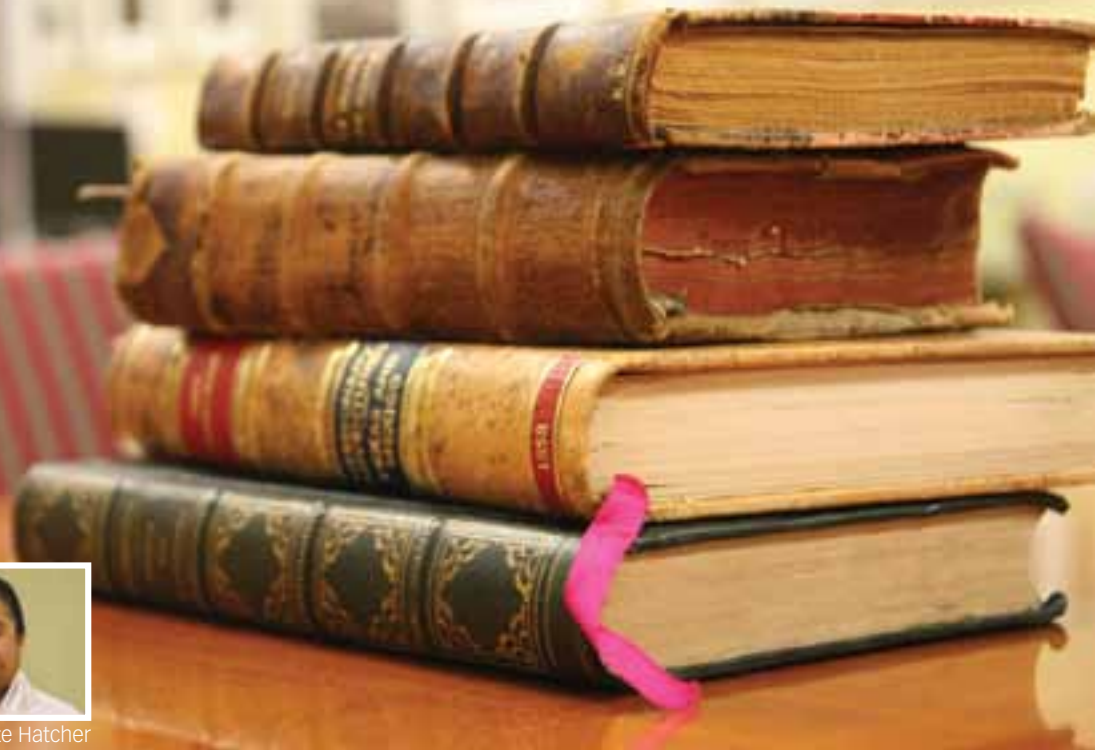


1992

The Finance Committee approves name change to Texas A&M International University.



Jeanette Hatcher



ACCESS YOUR HISTORY AND SECURE YOUR LEGACY WITH TAMIU KILLAM LIBRARY SPECIAL COLLECTIONS AND ARCHIVES

You can become a part of a long lasting legacy of supporting education by donating archival materials or donating monetary contributions, suggests Texas A&M International University Killam Library Special Collections and Archives Librarian Jeanette Hatcher.

“By donating to the Killam Library Special Collections and Archives, you become a part of a lasting legacy of supporting education for our local and global communities,” Hatcher said.

The Special Collections and Archives is a specific repository within the Library that stores materials of a special nature, including rare books, archives and collected manuscripts. They are valuable, rare, unique or fragile.

“We are very interested in collecting material documenting all aspects of our regional history—maps, photos, journals, books and other types

of material. Selection for inclusion to the Special Collections is based on individual assessment,” Hatcher explained.

One example of that type of acquisition is the Laurie Mann Guerrero Viejo Exhibit that features a series of 20 large, black and white photographs taken of Guerrero Viejo, Tamaulipas, México.

“The subject of this exhibit is a town of regional historical significance because Laredo and Guerrero Viejo have a shared history,” she said.

The Special Collections and Archives also acquired the 8,000-plus books that form the Edmund L. and Willard F. King Collection.

“Besides a wide range of works in Hispanic literature, the King Collection has concentrations on the life and works of Gabriel Miró, Gustavo Adolfo Bécquer and Lópe de Vega and includes the only original paper copy in

the U.S. of Miró’s ‘La mujer de Ojeda,’ ” Hatcher added.

In 2006, the Library’s Special Collections and Archives was designated a Regional Historical Resource Depository (RHRD). It serves as a depository for a six-county region that includes Webb, Zapata, Zavala, Dimmit, La Salle and Maverick counties.

The designation helped further develop the Special Collections and Archives as a center for regional historical research.

These items are accessible to everyone in the community. The Special Collections area consists of closed stacks and items are usually non-circulating.

For more information, contact Hatcher at jhatcher@tamiu.edu or call 326.2404.

For more information on TAMIU’s Special Collections and Archives, click on library.tamiu.edu ■

ALUMS NAVARRO AND CAVAZOS... THEY'RE SIMPLY TOPS



IMELDA NAVARRO

Two Texas A&M International University graduates, Imelda Navarro ('81) and Kristina Cavazos ('06), have recently received top honors for their accomplishments.

Imelda Navarro, Senior Executive VP, CFO, COO and a 29-year employee of International Bank of Commerce, has been recognized as one of the top 25 finalists in the country for *Hispanic Business Magazine's* 7th annual Woman of the Year Award. The award recognizes the accomplishments of successful Hispanic women and the challenges they have overcome in their personal and professional life. Navarro was honored as a finalist at a June dinner gala in Houston.

Navarro began her career at 16 with IBC Bank as a file clerk. Throughout her 29 years at IBC Bank, she quickly moved up the corporate ladder obtaining greater responsibility within the corporation. In 1998, she was promoted to Senior Executive Vice President, a role that puts her second-in-command to President and CEO, Dennis E. Nixon. She also serves on the board of directors of IBC Bank and its holding company, International Bancshares Corporation.

"It is truly an honor to be recognized as a finalist among such a talented, well-educated and strong group of women who have all made a positive impact as Hispanic role models in varying industries," Navarro said, "IBC Bank has provided me with the opportunity and tools to become a leader and I am grateful for the bank's continued support throughout my years of service in the financial industry."

Kristina R. Cavazos and her family have been named the 2009 Ambassador Family by the March of Dimes chapter in Laredo for sharing the miracle story of their youngest child, Carlos, who was born at 23 weeks weighing no more than one pound.

After Carlos' birth, the Cavazos Ramírez family unexpectedly became part of life that often characterizes many preemies: severe health complications with little expectations for survival. For several months, Kristina and her husband Ismael witnessed Carlos fighting for his life in an incubator.

However, after first being told that he would not survive more than a day to a week, a glimmer of hope began to emerge as Carlos pushed through several stormy months. Kristina explained that Carlos "is a little fighter," which has motivated the family to keep looking forward.

It has now been over a year and a half since that difficult time, and both Carlos' older siblings, Alexa and Ismael Jr., have welcomed the baby as full-time sibling at home.

Today, the family celebrates the regularity of home life and each other. Kristina has returned to work as a teacher at Colonel Santos Benavides Elementary and Carlos attends his daily therapy sessions.

"I'm so blessed with my family," exclaimed Kristina. ■



KRISTINA R. CAVAZOS AND HER FAMILY

ANNUAL GIVING 08-09

Alumni Annual Giving 08-09

Scholar's Circle - (\$1000.00 +)

Gina G. '87 and Mario A. Mejía '92
Virginia C. Muller '76

University Partner's Circle - (\$500.00 +)

Orlando D. Navarro '94
Christine A. Treviño '80

Century Circle - (\$100.00 +)

Doris L. Bell '81
Gabriella F. Castro '98
Melissa de Jesús Davis '00
Clara O. Flores '80
Edward L. Foster '77
The Honorable Rosalva Guerra '84, '06
Lizette Gutiérrez '98
Anna M. Haynes '93
Conrado M. Hein Jr. '78
José Luis Lara '88
Clara Lockridge '72, '75
Graciela López '74, '82
Patricia R. '00, '04 and David D. Pérez '90, '95
Cynthia H. Ramírez '79
Alfredo Santos IV '06
Rene Solís '72
Dr. Robert F. Thomas '00
Anthony D. Treviño '00
Ernestina G. Treviño '77
Adriana A. Villarreal '07

Maroon & Silver Circle - (\$1.00 +)

Luis R. Abascal-Oropesa '09
Miriam S. Aco '08
Verónica P. Adame '08
Erica Jean J. Adams '08
Melissa E. Aguayo '09
Carolina J. Aguero '09
Cristina Aguero '08
Jessica Y. Aguero '09
Diana Aguilar '05, '08
Rosalie P. Aguilar '08
Karina M. Aguillón '09
Melissa A. Aguillón '08
Jorge V. Aguiñaga '07
Rosa E. Alanis '09
Hadith J. Alatorre '08
Melissa Alegría '09
Elizabeth Alejandro '08
Héctor Alejandro '08
Leticia Alfaro '08
José R. Alicea '09
Abigail Almaguer '08
Enrique Alvarado Jr. '08
Gerardo Alvarado '09
Óscar Alvarado '08
Esthela A. Alvarez '08
María E. Alvarez '08
Olga Anderson '08
Ingrid Arandía '07, '08
Jason Archer '08
Jessica Y. Arellano '08
Porfirio R. Arguelles '08
Hacel M. Arias '08
Karina Arispe '08
Cheryl D. Arnold '08
Melissa M. Arreazola '08
Mariana Arredondo-Gamez '09
José F. Arreola '08
Rosa E. Arreola '08
Daisy Arteaga '08
Lesley Arteaga '09
Stephanie P. Atwell '08
Lydia L. Avalos '04, '08 and Arturo Treviño '08
Francisco Ayala '08
Ida Bah '08
Raquel Baker '09
Ruben Barberena '08
Irma I. Barrera '09
Marc D. Barrera '08
Norma D. Barrera '03, '08
Rene A. Barrera '98
Tabata I. Barrera '08
Elsa Barron '08
Héctor S. Basoria '08
Adrianna Bautista '09
Norma L. Bazan '08
Jannette A. Belloc '08
María D. R. Beltrán '08
Claudia Benavides '08
Gladys A. Benavides '09

Ingrid Benavides '07, '09
José D. J. Benavides Jr. '08
Laura M. Benavides '09
Sandra G. '77 and José R. Benavides '84
Luis A. Blancas '08
Nora E. Bolanos '09
Elsy D. Borgstedte '08
Elizabeth M. Botello '08
Juan Botello '08
Blanca G. Briseño '08
Iris B. Briseño '08
María D. Brizuela '09
Cynthia E. Bryand '08
Elizabeth Burdette '09
Emelinne D. Caballero '08
Maxine Caballero '08
Erika M. Cabello '09
Elias D. Cabrera '05, '08
Verónica Cadena '09
Raymundo Caldera '09
Aaron Calderón '09
Dahlia S. '08 and Federico J. Calderón '08
José A. Calderón '08
Martha E. Camacho '09
Adán Camarillo Jr. '09
Ariadna Camarillo Bañuelos '08
Benigna M. Campos '09
Claudia Canales '09
Omar Canizalez '08
Julio A. Cano '08
Jessica Cantero '09
Samuel Cantrell '08
Abundio R. Cantú '08
Angélica P. Cantú '93, '08
Wenceslado Cantú III '08
Adriana Cárdenas '09
Jessica A. Cárdenas '09
Patricia Cárdenas '04, '09
Sandra M. Cárdenas '09
Katya J. '08 and Dana R. Carpenter Jr. '08
Linda J. Carr '98
Leslie D. Carreon '08
Cindy Carrillo '08
Jessica Carrillo '08
Raquel Carrillo '09
Rosa M. Carrillo '08
Antonio J. Casarez '09
Eliezer Castañeda '09
Manuel Castañeda Jr. '09
Gerardo Castellanos Jr. '08
Rosalie Castilleja '09
Antonio Castillo III '08
Brenda Castillo '08
Gilberto A. Castillo '08
Maricela Castillo '01
Marta Castro '00
Meliza A. Castro '09
Jorge A. Cavazos '08
Maribel Ceballos '09
Cynthia M. Cervantes '08
Laura Cervera '08
María F. Chaires '08
Adriana L. Chapa '08
Elizabeth M. Chapa '08
Imelda G. Chapa '02, '06
Rene Chapa '08
Brenda A. Charles '08
María d. C. Chavarría '08
Diana E. Chávez '08
Claudia Chávez '09
Javier E. Chávez Mendez '09
Diana L. Chesney '96
Hon Y. Cheung '08
Ana C. Cisneros '08
Mónica Colunga '08
Cynthia E. '08 and Gerardo A. Contreras '08
Jacqueline Contreras '08
Verónica Contreras '08
Irasema Cornejo '01
Judith L. Coronado '06, '09
Rodrigo Corral '08
Dr. Guadalupe M. Cortés '79
Christine A. Cortez '08
Laura B. Cortez '08
Óscar Cortez '08
Anita N. Coston '09
Alicia M. Cruz '08
Vanessa B. Cruz '08
Verónica Cruz '09
Geoffrey E. Daves '09
Debra '09 and Omar G. Dávila '07
Sheila N. De La Cruz '09

Alondra A. De La Fuente '08
Carlos A. de la Garza '07
Topacio V. De La Rosa '06
Arturo Diaz Jr. '09
Bibiana Diaz '09
Lilia Diaz '08
Sonia Diaz '06
Alba G. Domínguez '09
Edgar Domínguez '08
Emmanuel A. Domínguez '08
Joann Domínguez '09
Roxana J. Domínguez '08
Vicente Domínguez III '01
Elizabeth M. Dovalina '08
Sonia M. Dovalina '09
Luciano Duarte '75
Miguel A. Duran '08
Nancy G. Duran '04, '08
Adolfo Duron Jr. '08
Jessica L. Durrance '08
Kristina L. Ehrenzweig '08
Araceli C. Elizondo '09
Viviana Elizondo '09
Sahar Emami Khaledi '08
Ramin Emami '08
José L. Encalada III '08
Angel R. Encinas '09
Elizabeth Enríquez '08
Erika L. Enríquez '08
Johana L. Enríquez '08
Juanita Y. Escamilla Deliganis '08
Miguel A. Escobedo '04, '06
Christian M. Esparza '08
Leticia Espinosa '09
Alicia E. Espinoza '08
Manuel D. Espinoza '09
Moses E. Espinoza '08
Sylvia A. Espinoza '08
Melissa E. Estevis '08
Erik D. Estrada '08
Gabriel E. Estrada '08
María A. Estrada '08
María E. Estrada '08
Linda Evans '09
Marlene Evans '08
Jacqueline P. Ferdin '08
Dawn R. Ferrer '07, '08
Adrian Flores '09
Alicia V. Flores '09
Araceli M. Flores '08
Beatriz Flores '08
Daniel E. Flores '09
Delinda A. Flores '09
Imelda Flores '02
Jessica D. Flores '99, '08
Juanita H. Flores '08
Letycia R. Flores '01, '08
Michael A. Flores '09
Miguel A. Flores '08
Rosa Flores '99, '08
Serena Flores '08
Sylvia I. Flores '08
Ofelia M. Fonseca '90
María D. S. Galindo '08
Alberto Galvan '09
Salvador Gamboa '09
Agustin Gamez '76
Cassandra R. Gamez '09
Sonia Gamez '08
Ashwin Reddy Gantareddy Ramathirtham '08
Linda M. Garay '09
Araceli R. García '09
David A. García '08
Eduardo A. García '05
Erika A. García '08
Erika G. García '08
Francisco A. García '08
Gerardo J. García '94, '06
Gladys A. García '08
Christine R. '06 and Héctor E. García '03
Karla D. García '08 and Juan P. Orozco '07
Krystal García '09
Lillian García '07, '08
Linda García '09
Linda L. García '08
Mabel J. García '09
María G. García '08
María R. García '99, '08
Martha García '08
Martha E. García '09
Melissa García '09
Priscilla García '08

Alicia M. García Quiñones '08
Rosa M. García '08
Ruben García '08
Samantha J. García '08
Samuel García Jr. '08
Vanessa G. García '09
Adriana Garza '05, '08
Alberto Garza III '08
Blanca E. Garza '08
Claudia Garza '07
Cordelia Y. Garza '08
Deena L. Garza '08
Elsa B. Garza '08
Erika Garza '08
Esmeralda D. Garza '09
Eva M. Garza '08
Gabriela A. Garza '08
Gabriela V. Garza '05, '08
Gilberto J. Garza '09
Irma O. Garza '08
Jessica Garza '08
Jesús Garza Jr. '08
Joe Garza Jr. '08
Karla K. Garza '08
Linda M. Garza '01, '06
María L. Garza '00, '08
Nancy M. Garza '08
Nancy N. Garza '08
Nayra A. Garza '08
Reynaldo Garza Jr. '08
Samantha M. Garza '09
Susana M. Garza '09
Verónica Garza-Ydrogo '08
Ivan Gaxiola '08
Abraham Gaytan '08
Cipriana G. Gaytan '08
Salome Gaytan Jr. '08
Eloy Gloria Jr. '08
Dania K. Gomez '09
David C. Gomez '06
Manuel Gomez III '01
Pamela Gomez '09
Diann N. Gonzáles '09
Peter A. Gonzáles '08
Ana M. González '08
Andrea González '08
Angélica González '08
Anna L. González '08
Armando M. González '08
Brenda E. González '08
Brianna Y. González '08
Carina B. González '09
Christopher A. González '08
Claudia C. '04, '07 and Roberto González '06
Cynthia A. González '09
Cynthia L. González '09
Liliana M. González de Moreno '09
Dulce M. González '09
Elizabeth González '09
Esperanza C. González '09
Gilberto González '09
Gloria P. González '08
Hilda V. González '99
Jackie J. González '01
Jesús A. González '09
José A. González '08
Juan I. González '03, '08
Julissa González '08
Karla M. González '09
María A. González '08
María E. González '08
Maryela González '08
Michele W. González '09
Nelicia González '09
Remigio González, III '08
Ricardo González '08
Sandra González '08
Teresa V. González '08
Martha A. Guajardo '08
Vijaya Lakshmi Gudipati '08
Angela M. Guerra '08
Elizabeth Guerra '08
Gabriela D. Guerra '01, '08
Mayra P. Guerra '08
Dagoberto Guerrero Jr. '08
Erica P. Guerrero '08
Ismael Guevara Jr. '08
Marissa Guevara '08
Genelle K. Gutiérrez '08
Kimberly R. Gutiérrez '08
Marie G. Gutiérrez '09
Saida M. Gutiérrez '09

Teresita D. J. Gutiérrez '81, '05
Amelia B. Guzmán '09
Michael Guzmán '08
Omar O. Guzmán '09
Raúl Guzmán Jr. '08
Nancye L. Hagy '05, '09
Magdalena Hall '74
Matthew D. Hall '09
Valerie M. Haugen '08
Sdeyne Heredia '08
Adriana Hernández '08
Alexandra M. Hernández '09
Alma Hernández '08
Christina Hernández '08
Cristina J. Hernández '09
Cynthia Hernández '08
David Hernández '06, '08
Diana R. Hernández '08
Edgar J. Hernández '07
Heriberto Hernández '09
Juan F. Hernández '03, '08
Kristina Y. Hernández '09
Marco A. Hernández '08
Marissa C. Hernández '08
Natalie Hernández '08
Patricia Hernández '08
Rosa A. Hernández '08
Sandra A. Hernández '08
Tanya K. '08 and Agustín Hernández Jr. '05
Teodora Hernández '08
Vanessa Hernández '08
Vanessa L. Hernández '09
Claudia S. Herrera '08
Eduardo J. Herrera '08
Laura S. Herrera '00, '08
Sarah Herrera-Sánchez '07, '08
Sabrina Y. Hill '09
Cristina P. Hinojosa '09
Linda L. Hinojosa '08
María L. Hinojosa '09
Priscilla M. Hinojosa '08
Jonathan J. Hoguet '08
Mónica H. '02, '09 and Raúl Holguín Jr. '00
Daniel B. Ibarra '08
Martha L. Ibarra '09
Oneida Ibarra '09
Raúl Infesta Jr. '08
Anna C. Izaguirre '08
Guadalupe Jaramillo '08
Rocio Jaramillo '09
Guadalupe Jenkins '94
Cynthia P. Jiménez '09
Marina E. Jiménez '09
Verónica G. Jiménez '09
Mary F. Jones '04
María D. Kelechian '08
Verónica M. Khan '08
Harun Rao Lakkakula '08
Ana G. Lara '03, '08
Gina R. Lara '08
Maureen Lara '09
Christopher S. Laurel '08
Éfrain J. Laurel '96
Gabriela Leal '08
Eliana Ledesma '08
Juan Ledesma Jr. '08
Jessica Y. Ledet '09
Debbie E. '03, '06 and José Leija '08
Patricia Leija '08
Xareny G. Leon '08
Cynthia Leyendecker '09
Jennifer Lidsky '81, '02
María L. Liendo '01, '08
Rebecca Link '05
Angelica M. Llanes '09
Óscar O. Llano '08
Rocio Lona '09
Brenda Longoria '08
Alexandra L. López '08
Andrea López '08
Brenda I. López '08
Claudia G. López '09
Denise López '08
Eduardo S. López '08
Eloy A. López Jr. '08
Hugo E. López '08
Liliana López '09
María J. López '03
Mariza López '08
Priscilla M. López '08
Ricarda G. López de Niño '08
Ruben López Jr. '04
Mayra K. Lozano '08
Sarah R. Luan '08
Vanessa M. Lucio-Medina '08
Myra J. Luera '08
Cindy M. Lugo '08

Julio Lujano '02, '06
Óscar Luna '08
Jennifer M. Macias '08
Melinda Macias '08
Alexander G. Madriaga '05, '07, '09
Maribel M. '05 and Alejandro Madrigal '04, '06
Melissa C. Madrigal '08
Vanessa R. Madrigal '09
Selina Magaña '08
Dora A. Maldonado '92
Jessica M. Maldonado '08
Lucía I. Maldonado '07, '09
Martha E. Maldonado '08
Sandra Maldonado '08
Belinda L. Manning '98, '08
Monica G. Mante '08
Velma Marin '08
Javier S. Márquez '09
Alejandro Martínez '08
Alexandria Martínez '09
Ana M. Martínez '05
Analisa Martínez '09
Belinda Martínez '06, '09
Blas A. Martínez Jr. '08
Cynthia Martínez '08
Daniel Martínez '06
Dolores Martínez '05, '08
Elsa C. Martínez '09
Elsie Martínez '09
Leticia A. '75 and Felipe Martínez '77
Felipe A. Martínez Jr. '09
Guadalupe Martínez '08
José A. Martínez Jr. '06
Luz M. Martínez '08
Lynda M. Martínez '09
Olga Martínez '72
Óscar Martínez '84
Raúl A. Martínez '08
Rebecca M. Martínez '08
Roberto Martínez '09
Saul Martínez '09
Sylvia A. Martínez '76
Trinidad Martínez III '08
Valeria V. Martínez '99, '08
Valerie M. Martínez '09
Dina M. Mastee '08
Etelvina Mata '09
Juan A. Mata '09
Selina M. Mata '09
Yolanda L. Mauricio '03, '08
Alina J. Medina '08
Ana L. Medina '08
Cynthia M. Medina '09
Dania L. Medina '08
Mario R. Medina '90 '93
Mireyda M. Medina '09
Héctor G. Medina-Villarreal '08
Esmeralda Melendez '08
Briseida Mendoza '08
Erika Mendoza '09
María E. Mendoza '08
Selina G. Mendoza '08
Juan Meza '08
Justin S. Meza '08
Marissa C. Meza '06, '08
Sagrario B. Meza '08
Elizabeth A. Miller '08
Nathalie M. Miranda '09
Gloria A. Miravete '08
Deborah A. Mitchell '02, '08
Eloisa V. Moctezuma '08
Patricia V. Moctezuma '99, '07
Madison L. Mojica '09
Diana L. Molina '09
Luis A. Molina Jr. '09
María D. Molina '08
Thelma E. Molina '09
Verónica R. Molina '08
April Moncivais '08
Lori L. Montalvo '08
María G. Montalvo '93
Melissa E. Montalvo '09
Rebecca D. Montalvo '08
Lucía T. '96, '09 and Roberto Montante '88
Christian A. Montemayor '09
Vanessa Montemayor '05, '09
Mayra E. Montes '08
Norma A. Montes '08
Lilia I. Montoya-Valdéz '08
Jennifer L. Moore '08
Dinesh S. Moorjani '08
Adolfo R. Mora '09
David A. Morales '09
Diana C. Morales '09
Erica M. Morales '07
Francisco Morales '08
Marisa L. Morales '08

Marissa V. Morales '02, '07
Rodolfo Morales III '08
Sergio Morales '09
Jessicka T. Moran '08
Adriana P. Moreno '08
Armida H. Moreno '08
Elsa E. Moreno '08
Miguel A. Moreno '08
Ivan A. Morua '08
Mary E. Moubark '08
José R. Muñoz '07
Karla Y. Muñoz '09
Kristina R. Muñoz '09
Edgar Murillo '08
Jenny D. Murillo '08
Belinda N. Nangah '08
Leonor G. Narváez '99, '08
Esther D. Navarro '84
Gilberto A. Neira Jr. '08
Sra. K. Neppalli '08
Cindy L. Neri '08
Viridiana Nevarez '08
Ashly B. Newcomb '09
Cassandra J. Nieto '08
Natalia Nieto '08
Ninfa O. Nieto '89
David L. Nuñez '08
Wendoly Nuñez '02, '09
Santiago Nuño '08
Valeria D. Ochoa González '08
Ricardo Ochoa '08
Jesús G. Olay Ramírez '08
Vickie L. Oliva '08
Verónica M. Ollervides '08
José M. Ordoñez '08
Patricia C. Orduña '08
Alicia Orozco '08
Edmundo Orozco '06
Montserrat Orozco '05
Raquel Orozco '09
Luis A. Orozco-Arredondo '08
Gloria Ortiz '08
Ignacio Ortiz Jr. '08
María A. Ortiz '08
Olga S. Ortiz '84, '08
Ana C. Oviedo '08
Carolina Ozorio '09
Sandra K. Pacheco '09
Cristina A. Paez '08
Magda V. Paez '09
Becky L. Pagola '98
Citlaly B. Palau '08
Gloria Palau '09
María E. Palencia '91
Gerardo I. Palma '08
Janet R. Palomo '08
Noe H. Pantoja '08
Verónica V. Paramo '09
Guillermo Parra III '08
Yire A. Parra '08
Erica M. Patterson '08
Adriana C. Pelayo '91, '96
Sonia J. Pelico '08
Adriana V. Peña '96
Brenda Peña '08
Dalhi Peña '08
Gladys J. Peña '08
Isis Peña '08
Laura E. Peña '08
Liza J. Peña '04 '08
Valerie L. '01, '05 and Merced J. Peña '98
Elisa Peña Nuno '08
Andrea C. Pequeno '08
Ailed Pérez '00
Anna L. Pérez '09
Brenda G. Pérez '09
Camillia E. Pérez '02
Jessica Pérez '09
Martha E. Pérez '09
Melissa D. '05 and Armando I. Pérez '98
Miriam E. Pérez '08
Perla A. Pérez '00, '08
Rosario Pérez '08
Gisselle Pérez-Millicua '08
Melissa M. Peters '08
Isela Picazo '09
Marco A. Piñeda '08
Maribel Piñeda '04, '09
Marlina S. Ponce de Leon '09
Elizabeth Portales '08
Sandra Portales '08
Sujith Chandra Potlapalli '08
Bernice Pruneda '08
Cynthia L. Pruneda '09
Joanna E. Pruneda '08
Jorge L. Quijano '09
Cristina Quintanilla '08

Sandra Quintanilla '08
Gracie L. Quiroga '08
Rocio C. Quiroga '08
Alma C. Ramírez '09
Angie Ramírez '08
Arturo Ramírez '77
Debbi D. Ramírez '04, '08
Esmeralda J. Ramírez '09
Gabriella H. Ramírez '94, '00
Heberto A. Ramírez '98
Irene Ramírez '85
José L. Ramírez Jr. '09
Julie T. Ramírez '08
Lorraine Ramírez '08
Lucía I. Ramírez '09
Luis A. Ramírez '08
María E. Ramírez '08
María E. Ramírez '09
Mario A. Ramírez '08
Omar E. Ramírez '08
Sergio G. Ramírez '09
Verónica E. Ramírez '09
Erika B. Ramon '08
Christina M. Ramos '09
Roberta M. Ramos '92
Rosa M. Ramos '08
Virginia Ramos '08
Alma R. Rangel '08
Antonio R. Rangel '74
Carlos A. Rangel '08
Juanita E. Rangel '08
Miguel A. Rangel '08
Christopher A. Rea '08
Stephanie N. Reed '08
Karla P. Regalado '09
Melissa A. Rendon '08
Adriana Rentería '09
Laura E. '04, '06, '07 and
Gilberto Requena '04, '07
Cynthia Resendez '08
Lilia Resendez '08
Alexis E. Reyes '08
Jessika R. Reyes '08
Juan C. Reyes '09
Maricela Reyna '08
Melissa N. Reyna '06
Stephanie Reyner '08
Elias Rincon-García '08
Rebecca D. Rios '08
Belinda Ríos '08
Jaime A. Ríos '08
Jessica Y. Ríos '09
Yolanda M. '76, '80 and Gilberto Rios '79
Federico Rioseco '06, '08
Mario A. Robledo '08
Yuri M. Robles '09
Alfredo O. Roca Reyna '08
Armando Rodríguez Jr. '08
Clara E. Rodríguez '08
Elizabeth A. Rodríguez '09
Elva G. Rodríguez '03 '08
Florice Rodríguez '08
Amanda '95 and George D. Rodríguez '82, '95
Héctor A. Rodríguez '08
Laura L. Rodríguez '85
Luis G. Rodríguez '08
Michelle Rodríguez '09
Nicolas Rodríguez Jr. '09
Ricardo A. Rodríguez '08
Lluvia '05 and Roberto Rodríguez III '02
Rosario C. Rodríguez '09
Venissa Rodríguez '08
Verónica '08 and Humberto Rodríguez '06
Verónica Y. Rodríguez '09
Yvette Rodríguez '08
María D. Rojas '08
Yadira Rojas '09
Melina Roman '08
Melissa Y. Roman '08
Carlos D. Romero '08
Blanca S. Rosales '09
Estela Rosales '09
José G. Rosales '09
Christian A. Rubio '08
Rocio M. Rubio '08
Azeneth Ruiz '08
Marissa Ruiz '08
Michelle L. Ruiz '08
Patricia Ruiz '08
Patricia A. H. Ruiz '08
Priscilla Ruiz '08
Rosálinda Ruiz '08
Adrian Rull '09
Dhanesh S. Rupani '97, '01
Stephanie Saavedra '08
Tania I. Saavedra '08
Kristian A. Saenz '04, '08

Miguel A. Saito '08
Irene Salas '08
Karla E. Salas '08
Michael R. Salas '08
Tina L. Salazar '08
Erika M. Saldaña '06
Liliana Saldaña '09
Myrna B. Saldaña '08
Pablo Saldaña III '00, '04
Vanessa L. Saldaña '02, '06
Kristina Saldívar '09
Carmelita Z. Salinas '08
Laura A. Salinas '08
Maricella Salinas '08
Jessica V. Samaniego '09
Martha A. San Miguel '08
Ana M. Sánchez '09
Anabelly Sánchez '09
Claudia Sánchez '08
Dennise D. Sánchez '08
Dubelza E. Sánchez '05
Francisco Sánchez '98, '08
José L. Sánchez Jr. '09
Juan E. Sánchez '09
Julia M. Sánchez '08
Natalia Sánchez '09
Óscar Sánchez Jr. '09
Rebecca Sánchez '08
Rebecca G. Sánchez '09
Ruby R. Sánchez '09
Sandra P. '95, '08 and Francisco Sánchez '98, '08
Simon E. Sánchez '08
Ana E. Sandoval '08
María M. Santa Cruz '08
Roberto Santa Cruz III '04, '09
David B. Santos '09
Faustino Santos '08
Johanna Santos '09
María C. Santos '08
Mónica C. Santos '08
Sanjuanita N. Santos '08
Michelle Saucedo '08
María De Los Angeles S. Saucedo '78
Friedrich Schaffler '93
Calixto Seca Jr. '88
Gabriela D. Serna '08
Isela A. Serrano '08
Jorge R. Serrato '08
Claudia G. Sierra '08
Jorge I. Siller '04
Ricardo Siller '08
Michelle L. Silva '08
Verónica C. Slaughter '06
Alma C. Slown '09
Michael C. Smith '09
Christina Solís '08
Delia P. Solís '93, '07
Leslie E. Solís '08
María E. Solís '06, '08
Yolanda Solís '09
Serena Sons '09
Mary C. Sosa '09
Leonor A. Soto '08
Vanessa E. Sportsman '08
Jacqueline C. '98, '99 and
Randal C. Spring '97, '09
Sheethal Surendran '06
Kenneth Taylor '08
Aaron P. Tobias '09
Angélica M. Reyes '04 and
Erasmus J. Tobias '02
Laura A. '03 and José S. Tobias Jr. '05, '08
Cristina L. Torres '09
Jennifer Torres '08
Virginia Torres '08
Yolanda G. Torres '08
María L. Trejo '04, '08
Alicia C. Treviño '08
Armida Treviño '08
Emily A. Treviño '08
Isabel Treviño '08
Lilia L. '08 and Matthew A. Treviño '04
Mirella Treviño '09
Pauline Treviño '99
Ramón Treviño Jr. '08
Rose Marie C. Treviño '06, '08
Saralyia '09 and Hugo Benavides Jr. '04
Trinidad M. Treviño '08
Bianira E. Tristan '08
María del Pilar '91, '05 and José A. Tristan '89
Yessenia Ubaldo '09
Gilberto Urdiales III '08
Christina A. Uribe '09
Nancy M. Valadez '08
Adriana Valdez '92, '09
Ana L. Valdez '09
Sofía Valdez '08

Clara A. Valles '08
Manasa Vankamamidi '08
Iliana M. Vargas '09
Beatriz A. Vásquez '09
Carmen G. Vásquez '09
Dennese Vásquez '08
Kellie Vásquez '08
Omar Vásquez '09
Rosa M. Vásquez '08
Ruby Vásquez '08
Samantha Vásquez '08
Briseida Vázquez '08
Claudia I. Vázquez '09
Erika J. Vázquez '02, '08
Ociel Vázquez '06, '09
Alberto D. Vela '08
Cesar E. Vela Jr. '98, '06
Jorge L. Vela '02
Krystal A. Vela '09
María G. Vela '08
Noe A. Vela '08
Karla V. Velarde '09
Sylvia Velasco '09
Angie C. Velez-Busby '09
Judith Ventura '08
Sonia M. Vera '99, '04
Deborah L. Vidal '09
Valerie R. Vidaurri '08
Vanessa Y. Vigil Ortegon '08
Yolanda V. Vigil '07
Juan Villa III '02
Virginia M. Villalobos '08
Antonio G. Villanueva '09
Krystal R. Villanueva '09
Liza Villanueva '08
Mildred Villanueva '08
Angélica Villarreal '08
Arianna E. Villarreal '08
Carlota Villarreal '08
Cynthia M. Villarreal '04
Héctor Villarreal '78
Kristina K. Villarreal '06
Sandra L. Villarreal '08
Sowmya Vinta '08
Judith I. Wawroski '08
Catherine H. Welles '09
Óscar Widales '09
San Juana V. Winans '08
Norma I. Ybarra '06, '08
Agustín G. Zamarripa '08
Mabel Zamarripa '08
Arturo Zavala '75
Joséfina Zavala '09
Miguel Zavala '09
Ariane Y. Zecca '08
Linda E. Zepeda '08
Nayeli G. Ziga '09
Griselda Zúñiga '08
Ivan G. Zúñiga '08
Michelle Zúñiga '08
Sara A. Zúñiga '92

Community Giving 08-09

President's Circle - (\$10,000.00 +)

Anonymous
Border Media Partners-BMP
Canseco Foundation
Mary Kathryn and Rosendo A. Carranco
ConocoPhillips, Inc.
Matias de Llano Charitable Trust
Doctors Hospital of Laredo
D. D. Hachar Charitable Trust Fund
Guadalupe C. Haynes
International Bank of Commerce
John G. and Marie Stella Kenedy
Memorial Foundation
Laredo Medical Center
Elsa Laurel
Rebecca and Óscar M. Laurel
Leyendecker Construction, Inc.
Guadalupe and Lilia Martínez Foundation
Elsa Nicholson
A.R. and María J. Sanchez Family Foundation
South Texas Academic Rising Scholars
Mr. and Mrs. Carroll E. Summers, Jr.
TG
Texas Instruments, Inc.
University of Texas at San Antonio
Union Pacific Foundation
Lamar Bruni Vergara Trust
Dolly Richter Watson Foundation
Webb Consolidated Independent
School District
Robert A. Welch Foundation

Dean's Circle - (\$5,000.00 +)

Commerce Bank
Farm Credit Bank of Texas
Mr. and Mrs. Kenneth A. James
Kinder Morgan Foundation
Laredo Asian Association
Laredo Development Foundation
Laredo Medical Center Gift Center
Laredo Specialty Hospital
Logistics and Manufacturers Association
Port Laredo
Mary Kay
Mr. and Mrs. Erle A. Nye
University of Texas at Austin
Walgreens Drug Store
Wells Fargo Bank, N.A.

Scholar's Circle - (\$1,000.00 +)

ABC Radio Control Hobbies
AEP - American Electric Power
Allegiant Air
B.P. Newman Investment Co.
Arturo N. Benavides, Sr.
Mr. and Mrs. Tad Brittingham
Mr. and Mrs. Thomas D. Brittingham
Mr. and Mrs. Ernest M. Brun, Jr.
Mr. and Mrs. Vidal Cantú, Jr.
Communities in School, Inc.
Construction Management Solutions LLC
Jean Copeland
Emerson Electric Co.
Minita M. Freeman
French American Cultural Exchange
Estate of Rudolph Hafernik
Hector Hall
Henri D. Kahn Insurance Service LLC
Ingram Park Nissan Mazda
Jett Racing and Sales Inc.
Jiffy Lube #2439
Laredo Encino LTD
Laredo Theater Guild
Stephen P. Magee
Marcis and Associates Inc.
Diana Montemayor
Mr. and Mrs. George E. Neel, Jr.
Popeyes Chicken and Biscuits
Princess Pocahontas Council
Dr. Maria del Carmen Rathmell and
Mr. Jacob Rathmell
Mr. and Mrs. Richard E. Sames
San Antonio CPA CE Foundation
Mr. and Mrs. Frank M. Staggs, Sr.
Sunbelt Air Conditioning and
Refrigeration Service, Inc.
Target Corporation
Texas Community Bank
James P. Walker
Mr. and Mrs. Abe S. Wilson
Women's City Club

University Partner's Circle - (\$500.00 +)

Adelanto HealthCare Ventures LLC
Allstate Foundation
Allstate Marcus Moreno Insurance Agency Inc.
Aramark Corporation
Mr. and Mrs. Bradley S. Buttermore
Coca-Cola Bottling Company Inc.
Marta Dodier
Fidelity Investments
Freeman and Castillon
Carlos A. Guzmán
L & F Distributor LTD
Laredo Arena Operating LP / Laredo
Entertainment Center
Laredo Federal Credit Union
Mr. and Mrs. Elmo López, Sr.
Adrian A. Martínez
Hector Mendes
Raveneaux Country Club
Saguaro Anesthesia Associates
Kimberly and Tano E. Tijerina '02
Toyota of Laredo
Dr. and Mrs. César J. Tula
Mr. and Mrs. Ernesto Uribe
USTA Texas Section
Mr. and Mrs. Jesús G. Vela-Cuéllar

Century Circle - (\$100.00 +)

Anonymous
Law Office of Elizabeth Martínez PLLC
A.H. Beck Foundation Co. Inc.
Academy Sports and Outdoors
Amco Insurance Group Inc.
Mr. and Mrs. Reymundo Alvarez, Jr.
Mr. and Mrs. Joe M. Arizola

Mr. and Mrs. José L. Arreguin
Rosa L. Arrellano
Mr. and Mrs. Michael E. Austin
Best Buy
Mr. and Mrs. James Bonugli
Brenco Inc.
Broadwater Design
Norberto Cantú
Carrizo Springs High School
The Honorable Solomon Casseb, Jr.
Mr. and Mrs. Guillermo J. Castro, Jr.
Chick-fil-A of Laredo FSU
City of Laredo Convention and Visitors Bureau
Mr. and Mrs. Gilbert M. Cornejo
Dr. and Mrs. Billy F. Cowart
Lucy A. Hansen and Lupe B. Cruz
Donnie Britt State Farm
Mr. and Mrs. C. N. Degeus
Dissinger Insurance Services LLC
Mr. and Mrs. Jose O. Dodier, Jr.
Mr. and Mrs. Larry Dovalina
Mr. and Mrs. Gerardo Echavarría, Jr.
EIB Contractors Inc.
Elizondo & Elizondo
Mr. and Mrs. Jaime Escobar
Ana Esparza
ETA Cuisenaire
Elvia C. Falcon
Federico Falcon
Falcon Holdings
First City Loan Inc.
First National Bank of Hebbronville
Mr. and Mrs. Robert Freeman, II
Fuddrucker
G-4 Trucking Service, Inc.
Mr. and Mrs. Eddie L. García
Mr. and Mrs. José García
Mr. and Mrs. Gerald Garza
Mr. and Mrs. Hilario M. Garza
Irma P. Garza-Santos
Mr. and Mrs. Tom Gates
Mr. and Mrs. George E. Glassford
Dr. and Mrs. Reynaldo Godines
Mr. and Mrs. John L. González
Mr. and Mrs. Roberto V. Liendo, Jr.
Warren J. Graffeo
Sandra R. Green
Mr. and Mrs. Irving Greenblum
Gloria G. Guajardo
Annabelle Hall
Mr. and Mrs. Óscar D. Hein
Irma G. Hernández
Mr. and Mrs. Richard M. Hernández
Herrera Pharmacy
Lamar Hinojosa
Mr. and Mrs. Eduardo J. Hinojosa
Holiday Inn Express
Jason Forklift Service Inc.
Dr. and Mrs. Dan Jones
Deborah M. Kamplain
Mr. and Mrs. John H. Keck
Joyce Keck
Kell Muñoz Architects Inc
Mr. and Mrs. E. Joe Kierstead
Laredo Cotton Transfer, Inc.
Laredo Salsa's Restaurant and Sushi Grill
Laurel Highlands Health Center
Laurel Insurance Company
Lois C. Leifeste
Levenson and Hill LLC
Limasol International Cuisine and Lounge
Leah F. Longoria
Mr. and Mrs. Gilberto Mancha
Mariscos El Pescador
Raymond Martínez
Mr. and Mrs. William H. McKendrick
Carlos Mejía
National Educational Systems Inc.
Mr. and Mrs. Larry A. Norton
Olympia International Inc.
Mr. and Mrs. Rolando G. Ortiz
Mr. and Mrs. Carlos F. Peña
Mr. Michael Portman
Powered by the Son LLC
Print X-Press
Rafael Quiroz
Rafael Reyes Madrigal
Mr. and Mrs. John S. Roberts
RS Group
Mr. Velma A. Ruiz
Shahi Inc.
Somos Seis LTD
Starr Telecommunications Etc LLC
Studio 55
Mr. and Mrs. Robert Summers
The Honorable Rosaura and and Omar Tijerina
Mr. and Mrs. José S. Treviño

Union Pacific Corporation
United Way of Laredo
Valero Alamo Bowl
Mr. and Mrs. Gene S. Walker, Sr.
Mr. and Mrs. James D. Walker
Washington's Birthday Celebration Association
Nancy M. Welch
Mr. and Mrs. Steve A. Whitworth
Mr. and Mrs. Salvador Rosas
Estate of Julia S. Watson
Josephine P. and Fernando F. Zúñiga, Jr. *
Dr. Maya Guerra and Fernando Zúñiga, III
Gloria N. Zúñiga

Maroon & Silver Circle - (\$1.00 +)

Anonymous
A&M Care BlueCross BlueShield
Mr. and Mrs. Héctor M. Aguilar
Mr. and Mrs. Edelmiro Alanis
Mr. and Mrs. Dick M. Allen
Cristina A. Alvarez
Mr. and Mrs. Luis Aranda
Sulamith R. Arriaga
Irma D. Ayala
B & M Forwarding Agency Inc
Nancy Baichi
Mr. and Mrs. José J. Barrera
Mr. and Mrs. Billy Beck
Bed Bath and Beyond
Mr. and Mrs. Bennie Belew
Peggy R. Bendele
Bennie L. Benford, Jr.
Jesus G. Blanco
Silvestra Blanco
Johnny J. Bonugli
Tamara L. Boven
Mr. and Mrs. Paul C. Bueno
Nellie H. Cano
Berta V. Cantú
Leonte T. Cantú
Rafael J. Carrera
Mr. Mary F. Castañeda
Mr. and Mrs. Jorge Luis Castillo
Mr. and Mrs. Paul Christensen, Jr.
Cinemark Theaters
Rosario G. Cisneros
Lee E. Colin
Andrea Contreras
Mr. and Mrs. Albert M. Cornejo
Mr. and Mrs. Rafael Cortez, Jr.
Mr. and Mrs. Juan A. Cruz
Daniels Bookkeeping and Income Tax Service
Eva U. Delgado
María C. Dovalina
Paula H. Duffy
Laurie M. Dufour
Mr. and Mrs. Anthony L. Duranti
EDM Farms Inc.
Eduardo's Mexican Food Steaks
Emperador Garden
Federico U. Enriquez
María T. Escobar
Mr. and Mrs. Jeffrey L. Ferrell
Margarita A. Flores
Chantel Flynn
Kelley R. Flynn
Follett Bookstores
Roger A. Fournier
Mr. and Mrs. Gerardo J. García
Luz A. García
Magdalena García
Marcos García
María A. García
Mr. and Mrs. Enrique C. García
Mr. and Mrs. Jorge García
Mr. and Mrs. Javier A. Paz
Mr. and Mrs. Alejandro Garza
Lydia G. Garza
Mr. and Mrs. Oliver F. Garza, III
Vilma Garza
Gold Canyon
Mr. and Mrs. Azael C. González
Eliza González
Mariza V. González
Mr. and Mrs. Noe González, Jr.
Mr. and Mrs. Alfredo R. González
Mr. and Mrs. Juan Guerra
Sylvia C. Guerra
Mr. and Mrs. Jesús Gutiérrez, Jr.
Jorge Gutiérrez
H-E-B
Kimberly A. Haines
Mr. and Mrs. Byron D. Hardin
Mr. and Mrs. Daniel B. Hastings, Jr.
Linda M. Hein
Benita M. Hernández
Ramiro Hernández

Mr. and Mrs. Juan Herrera
Juan A. Hinojosa
Paul T. Hissem
Hollywood Theatres
Mr. and Mrs. Barry Houg
Ishq Salon and Spa
Shari L. John
Johnny Carino's
Arthur L. Johnson
Julia Watson Jones and Manuel Salinas
The Honorable George P. Kazen and
Barbara Kazen
Drs. Roger and Gladys Keene
Mr. and Mrs. Dexter Koehler
Mr. Eileen M. Koerlin
Kowalsky, Rose and Company PC
Mr. and Mrs. Javier H. Leal
Mr. and Mrs. Armando Leza
Logans Roadhouse
Ernest G. López
Mr. and Mrs. Ricardo H. Lozano
Mr. and Mrs. Rodolfo R. Martínez
Mr. and Mrs. Sid H. Mazurek
Mr. and Mrs. Chad A. Mehling
Olga L. Meyer
Marianne Y. Mojica
Mr. and Mrs. David J. Moore
Pat V. Moya
Mr. and Mrs. Ronald M. Muñiz
Jayme L. Murphy
My Dentist
Jesse T. Newsome
Mary C. Northrup
Frank G. Novak
Olive Garden Restaurant
Jesús Paez
Mr. and Mrs. James E. Pearce
Diana C. Pérez
Mr. Javier Pérez
Mr. and Mrs. Bradley A. Pigeon
Ana Portillo
Barbara Powell
Powell Watson Motors, Inc.
Sylvia R. Ramírez
Mr. and Mrs. Iván J. Ramos
Mr. and Mrs. Daniel Rash
Laura Reyna
Stephanie Ríos
Teresa G. Rivas
Gonzalo M. Rodríguez
Mr. and Mrs. Michael Rogers
Roy R. González, D.D.S., M.S.D., PA
Ann R. Rupel
Ryan Elementary School
Claudia Saenz
Mr. and Mrs. Mario Salazar
Mr. and Mrs. Frank Saldaña, Sr.
Gerardo G. Salinas
Mr. and Mrs. Gerardo G. Salinas
Mr. and Mrs. José T. Sánchez
Verónica Santos
Mr. and Mrs. Jason Scott Schell
Mr. and Mrs. Melvin L. Schlink
Mr. and Mrs. James F. Sloan
Leonard D. Smith
Smoothie King
Mr. and Mrs. Larry Soliday
Star Income Tax Services
Dr. and Mrs. Larry Stein
Stein Insurance Agency
Mr. and Mrs. James Sullivan
Juanita M. Sustaita
Mirasol Tabarez
Pastry Shop
Sports Center
Tony Roma's Restaurant
Mr. and Mrs. Gregory J. Toolan
Irma C. Tremillo
Velia E. Uribe *
Velocity Window
Villarreal and Romero PLLC Attorneys and
Counselors at Law
Mr. and Mrs. Farzan R. Rhemtulla
Robert J. Williams
Mr. and Mrs. Lupe Ybarra
Bernadette and Antionette Yearwood
Mr. and Mrs. Thomas W. Zahn
Zapata National Bank
Mr. and Mrs. Delmiro Zarate

Employee Giving 08-09

Scholar's Circle - (\$1000.00 +)

Dr. Jesse R. Aros
Candy Hein
Dr. Ray M. Keck III

Barbara J. Mathieu
Lupita Mosqueda
Dr. Alan L. Seitel
María T. Treviño '72

University Partner's Circle - (\$500.00 +)

Dr. Whitney R. Bischoff
Celita Borchers
Dr. Jeffrey M. Brown
Dr. Randel D. Brown
Natalie C. Burkhalter
Juan J. Castillo Jr.
Dr. Carlene M. Henderson
Dr. Ken Hung
Trevor C. Liddle
Dr. Julio F. Madrigal
Dr. Alfredo Ramirez Jr. '93, '98
Gloria and Dr. Jacky So

Century Circle - (\$100.00 +)

Patricia I. Abrego '85
Dr. Ronald J. Anderson
Anonymous
Jacqueline H. Arguindegui
Dr. Louise A. Autio
Dr. Rafic Bachnak
Dr. Rex H. Ball
Julie E. Barrera '08
Graciela Buentello '08
María Elena Carroll
Alberto Chávez Jr. '01, '08
Dr. Wei-Chih Chiang
Cathy M. Colunga
Dr. Carlos E. Cuéllar '90
Dr. Faridoun Farrokh
Ernst D. Feisner
Jannet W. García
Juan G. García Jr. '05, '07
Rebecca L. García
Cassandra Wheeler and Leebrían E. Gaskins
Richard E. Gentry
Dr. Timothy Goles
Georgina D. González '99, '01
Dr. Humberto R. González
Verónica A. González
Dr. Michael M. Grayson
Dr. San Juanita G. Hachar '91
Dr. Roberto R. Heredia
Cristina Hernández
María E. Hernández '82
Rita R. Hernández '04, '08
Concepción C. Hickey
Dr. Tongdan Jin
Hayley D. Kazen '05
Dr. John C. Kilburn Jr.
Daniel A. Lathey
Christopher N. Lawrence
Dr. Juan R. Lira '75
Alejandro A. Martínez Jr. '89
Elena M. Martínez '93
Elizabeth N. Martínez '80, '01
Verónica G. Martínez '96, '98
Dr. Thomas R. Mitchell
Dr. Daniel J. Mott
Pamela Caballero and Dr. Jaime S. Ortiz
Jessica Palacios '03
Gerardo A. Pérez '08
Janette L. Pérez '04
Richard P. Pérez
Dr. Lem L. Railsback
Dr. Minita R. Ramirez '83
Christine M. Rebori '09
Óscar E. Reyna
Dr. William W. Riggs
Siobhan A. Rosales
Dr. Bonnie A. Rudolph
Dr. Tagi Sagafi-Nejad
Gustavo Salazar II '99
Janet K. Salinas
Stephen J. Sayward
Dr. Debbie L. Snell
Juanita M. Soliz '99
Miguel Angel Treviño
Dr. Patricia E. Uribe '91
Dr. Miroslava B. Vargas '75, '80
Petra Vela
Rodney M. Webb
Mark E. Webber

Maroon & Silver Circle - (\$1.00 +)

Dulce M. Aguilera
Ariana M. Aguillón '08
Dr. Ramón Alaniz
Aide Alvarado '02
Claudio E. Arias
Dr. Candace K. Baker
Aquilés Barrera

Dr. Aleta R. Belcher
Dr. Susan M. Berdahl
María Magdalena Blasco '98, '01
James M. Bonnette
Carmen L. Bruni
M. Isabel Cantú '03
Patricia Cardona
María Elena Carroll
Teresa Y. Chapa-Cantú
Juan Cisneros III '01
Melissa L. Compean
María I. Contreras
Dr. Jennifer M. Coronado
Dana H. Crabtree
Dr. Wanda J. Creaser and Mr. Rehn Kovacic
Rebecca E. Currie
Elizabeth Dodier
Richard M. Edgerton
María L. Elizondo '95
Melinda G. Elizondo '06
Dr. Neela A. Emanuel
Angie Escamilla
Scheiby C. Fisher '07
Linda D. Flores
Samuel Flores '02
Anne R. Frey
Nora U. Gaona
Hugo L. García '99, '03
María de los Ángeles García
Nilda M. García '06, '09
Sandra B. García
Verónica E. García
Vivian I. García
Felipe E. Garza
Juan de Dios Garza '05
Julissa Garza
Romelia Garza
Dr. Sergio D. Garza
Dr. Frances Gates Rhodes '78, '79
Dr. Friedrich C. Gechter
Anna M. Girdwood
Jesse González III '06
María G. González
Victor H. González Jr.
Jared D. Goodwin
Dr. Stanley C. Green
Dr. Barbara J. Greybeck
Dr. Cathy Guerra
Rocio Gutiérrez '08
Dr. Peter F. Haruna
John P. Hastings
Dr. Robert W. Haynes
Patricia Hernández '09
Rogelio H. Hinojosa
Destine D. Holmgreen '00
Andrés I. Jaime
Federico Juárez III '92 '08
Jorge C. Juárez
Dr. Firooz Khosraviyani
Geraldine Laurel
Dr. Sukho H. Lee
Nora A. Lerma
Scott E. Libby
Dr. Arturo Limón '90
Alberto López
Araceli Lozano
Norma G. Maciel
Sofía C. Maldonado '04, '06
Andrés E. Marin '08
Christy L. Martínez '07
José A. Martínez '03
Mayra A. Martínez '08
Patricia A. Martínez '06
Roberto C. Martínez '06
John M. Maxstadt
Shannon H. McBurnette-Arguelles
Linda McCreight
Wendy S. McManus
Julio C. Medina '04, '07
Esperanza Mejía
Amanda Mills
Miguel A. Montemayor
Virginia A. Morales
Melissa Morin
Blanca M. Naudin '07
Dr. Qingwen Ni
Dr. Paul J. Niemeyer
Lola Norris '99 and Dr. James A. Norris
Enid E. Nuñez
Norma C. Nuñez '06, '08
Jesse J. Olivarez
Samuel Oliveros '84
Patricia Ornelas '04
José C. Orta
Amelia Palacios '08
Anabel Palacios
Dr. Kimber J. Palmer

Sandra E. Peña
Dr. Mary A. Petron
Dr. Trace Pirtle
Chad A. Porter
Sylvia Portlock
Rene G. Prado '02
Juan A. Ramirez '03 '05
Norma S. Ramirez
Humberto Rangel
Jeni K. Ratliff '87
Laura C. Rea
Jaime Rios
Amelia V. Rodriguez
Cynthia L. Rodriguez
Nicole M. Romanos
Isabel L. Salazar
Christopher E. Saldivar '09
Rose A. Saldivar
Roberto G. Sanchez '84
Christina Y. Sandoval '07
Kimberlee D. Sandoval
Denise L. Schuster
Debra K. Segovia
Pamela A. Short
Michael Andrew Smith '02
Cindy Solano
Carmen G. Soto
Dr. Lynne M. Stamoulis
Marivic Torregosa
Julio César Tovar
Brendan S. Townsend
Martha S. Treviño '05
Elizabeth R. Valdez
Itiel Valdez
Sonia L. Vela
Maria Irene Vela-Mendoza
José L. Velasquez '76
David E. VerMilyea
Jessica S. Villanueva
Firely V. Vincent
Virginia D. Watkins
Nico J. Wiersema
Maria I. Woods '00
Dr. Richard B. Wright
Dr. Ruby A. and Dr. Marcus A. H. Ynalvez

Heritage Society Cumulative Giving 1979-2009

Platinum Society - (\$1,000,000.00 +)

BBVA Compass
Belia Benavides and Family
Canseco Foundation
E. H. Corrigan Foundation
Matias de Llano Charitable Trust
D. D. Hachar Charitable Trust Fund
Mr.* and Mrs. Radcliffe Killam and Family
Family of Oscar M. Laurel
Anthony J. and Georgia * Pellegrino
Mr. and Mrs. Renato Ramirez
Fernando A. Salinas Charitable Trust
Mr. and Mrs. Harry E. Sames, III
Mr. and Mrs. A. R. Sanchez, Jr. and Family
Dolly Richter Watson Foundation
Lamar Bruni Vergara Trust

Gold Society - (\$500,000.00 +)

H-E-B
Guadalupe and Lilia Martínez Foundation
Sisters of Mercy and Mercy Health Center
Person, Whitworth, Borchers and Morales LLP
SBC Foundation
Evelyn and Carroll Summers, Jr.

Silver Society - (\$250,000.00 +)

City of Laredo
International Bank of Commerce
South Texas Academic Rising Scholars
TAMIU Faculty and Staff
Time Warner Cable
Shashi and Priya Vaswani

Bronze Society - (\$100,000.00 +)

AEP Texas
Commerce Bank
ConocoPhillips, Inc.
Doctors Hospital of Laredo
Helene Fuld Health Trust
Elizabeth Gill
Greater Texas Foundation
Adela and Manuel Guerra
Mr. and Mrs. Daniel B. Hastings, Jr.
Nancy Smith Hurd Charitable Trust
J. A. Kawas Charitable Trust

Edmund L. and W. King *
Laredo Daybreak Rotary Club
Laredo Medical Center
Laredo Rotary Club
Leyendecker Construction, Inc.
Logistics & Manufacturers Association
Port Laredo
Mall Del Norte
B. P.* and Peggy Newman and Family
Mr. and Mrs. Brian O'Brien
Hortense Offerle
Martha C. Pradeau Charitable Remainder Trust
Sandia National Labs
Union Pacific Foundation
Robert A. Welch Foundation
Wells Fargo Bank, N.A.
Women's City Club

Pewter Society - (\$50,000.00 +)

Anonymous
Arguindegui Oil Company
AT&T Foundation
The Honorable C. Y. Benavides, Jr.
Norma Zúñiga Benavides
Mrs. Josephine Brand *
Chemtura Company
Rosendo A. and Mary Kathryn Carranco and Family
Coca-Cola Foundation
Mr. and Mrs. Isaac Epstein
Excelencia in Educacion
Ford Motor Company
Mr. and Mrs. Albert E. Friedman
Emilia Rodríguez García
Mr. and Mrs. Eduardo A. Garza-Robles
Lasker O'Keefe Hereford
Norma A. Hunt
Dr. and Mrs. Ray Keck, III
Lakeside Subdivision, LLC
Laredo Development Foundation
Mr. William N. Mayo
Mejia Engineering Company
Janet M. Payne
Mr. and Mrs. George Person
Etta T. Russell *
Servicios Industriales Peñoles S. A. de C. V.
South Texas Higher Education Foundation
TAMIU Alumni Association
TG
Javier A. Zapata, MD *
Mr. and Mrs. Renato Zapata, Sr. *

Copper Society - (\$25,000.00 +)

American Petroleum Institute-Border Chapter
The Honorable Bob Bullock and Mrs. Jan Felts Bullock
CONAHEC
Dr. Henry Cuellar
Educational Foundation of America
Falcon International Bank
Estate of Rudolph Hafernik
J. J. and Minnie Dora Haynes
Guadalupe C. Haynes
International Good Neighbor Council
Laredo Chapter
The John G. and Marie Stella Kenedy Memorial Foundation
Khaledi Family
Laredo Chamber of Commerce
Laredo Licensed U.S. Customs Brokers Association, Inc.
Laredo Morning Times
Laredo Specialty Hospital
Mr.* and Mrs. Max Mandel
Suzy Mayo
Meadows Foundation
Mercy Health Plans
Mr. and Mrs. Rudolph M. Miles
Pan American Express, Inc.
Ed Rachal Foundation
Family of Lupita Ramirez and the Villa de San Agustín de Laredo Genealogical Society
Minnie Ramirez and Family
State Farm Mutual Automobile Insurance Company
Summerlee Foundation
The Honorable Aldo and Alice Tatangelo *
Texas Guaranteed Student Loan Corporation
VOS-MITA
Josephine P. Fernando F. Zúñiga, Jr.* and Family

Donor Designated Scholarships 08-09

President's Circle - (\$10,000.00 +)

H. E. Butt Grocery Company
D. D. Hachar Charitable Trust Fund
Hispanic Scholarship Fund
International Bank of Commerce
Laredo Independent School District
Educational Foundation
Laredo Medical Center Gift Shop
San Angelo Area Foundation
Scholarship America
South Texas Academic Rising Scholars
Texas Association of Developing Colleges
United Independent School District

Dean's Circle - (\$5,000.00 +)

Hispanic Association of Colleges & Universities
Houston Endowment Inc.
Laredo Daybreak Rotary Club
LULAC National Educational Service Centers Inc.
Saunders Foundation
The National Collegiate Athletic Association
Valley Alliance of Mentors for Opportunities and Scholarships

Scholar's Circle - (\$1,000.00 +)

A. R. Sanchez Memorial Scholarship Fund
ACT Corporation
Alamo AFA Aerospace Education Foundation
Alpha Delta Kappa
American Cancer Society
Anonymous
Arbor E&T LLC South Texas Support Services Imprest
Badger Mountain Lodge #57
BBVA Compass
Center for Scholarship Admin Inc.
Chick-fil-A Inc.
Communities in School Inc.
ConocoPhillips
County of La Salle
Doctors Hospital Auxiliary
Marta Dodler
Dr. Leo Cigarroa High School
Elysian Social Club
Encore Trust
Foresters
GEO Group Inc
Greater Houston Lumber and Building Material Dealers Assoc Inc
Harlingen High School
Hispanic College Fund
Hon-Dah Resort-Casino
Houston Livestock Show and Rodeo
IBC Foundation
International Scholarship and Tuition Services Inc.
J. W. Nixon Orchestra Parents Association
John B. Alexander High School
La Salle County Fair Association Inc.
Laredo Builders Association Inc.
Laredo Gateway Rotary Club
Laredo Golf Association
Laredo Independent School District
Laredo Medical Center
Logistics & Manufacturers Association
Port Laredo
Lyndon B. Johnson High School
Ronald McDonald House Charities of San Antonio
Medina Electric Cooperative
Mis Raices No Border-One Heart
Mr. South Texas Foundation
News Laredo Hoops
Ornelas, Castillo and Ornelas PLLC
Pan American Round Table of Laredo
Project GRAD
San Antonio Area Foundation
South TX Co. Judges and Commissioners Assoc.
Super S Foods
Texas A&M University
Texas Interscholastic League Foundation
Texas Migrant Council
United South High School
Vietnam Veterans of Laredo Association
Washington's Birthday Celebration Association
Estate of Helen R. Watson
Zapata VFW Post No. 7768

University Partner's Circle - (\$500.00 +)

Alethea Society
American Petroleum Institute-Border Chapter
Association for Retarded Citizens Texas
Don Miller Fund
Joe Barnhart Scholarship Program
Blood Systems Inc.
Delphi Automotive Systems
Delta Kappa Gamma Alpha N.U. Chapter
Edinburg High School Club Fund
Federal Bar Association-Del Rio Chapter
First Presbyterian Church
J O Roofing
J. W. Nixon Booster Club
J. W. Nixon High School
Jerico Concrete Foundations Inc.
Laredo Community College
Laredo Letter Carriers for Scholarships
Laredo Pan American Golf Association
Laredo Webb County Policy Council
Maemco Social Club
Martha Wright-Martinez LLC
McDonald's Restaurants
MHS Class of 1974
Redman Redwing Council, No 16
Sheldon Independent School District
Southern Distributing Company Inc.
St. Vincent de Paul Society
TAFT Raiders Athletic Booster Club
Texas Department of Public Safety
Officers Association
Texas League of United Latin American Citizens
Tuesday Music & Literature Club
Zapata VFW Post # 7768

Century Circle - (\$100.00 +)

5 H Partnership LTD
Capital Bank of Texas
Ladies of Harley-Roadrunner Harley Owners Group Chapter 1837
Langley and Banack Inc.
Laredo Police Officers Association
Laredo Tennis Association
Adrian A. Martinez
NALC Branch 354
National American Miss
Salute to Education Region Two Inc.
San Antonio Education Fund
Scan Inc.
Texas A&M Foundation
United High School Activity Fund Scholarship

Tributes In Memory of:

Elmer Buckley
Joyce Clark
T. R. Esquivel
John E. Foster
Nancy Hall
Mary Carolyn Josey
Lacey Cigarroa Keck
Edward R. Leyendecker
Isidra L. Madrigal
Mercurio Martínez, IV
Manuel Martínez
B. P. Newman
Annette M. Olsen-Fazi
Lawrence Reedman
Carroll E. Summers, III
William Dean Swisher
Velía E. Uribe
Fernando F. Zúñiga, Jr.

In Honor of:

Doris Epstein

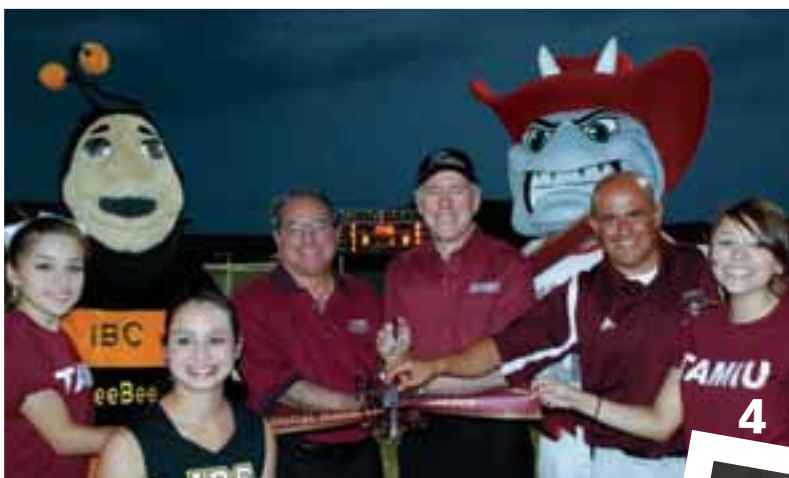
**Denotes deceased*



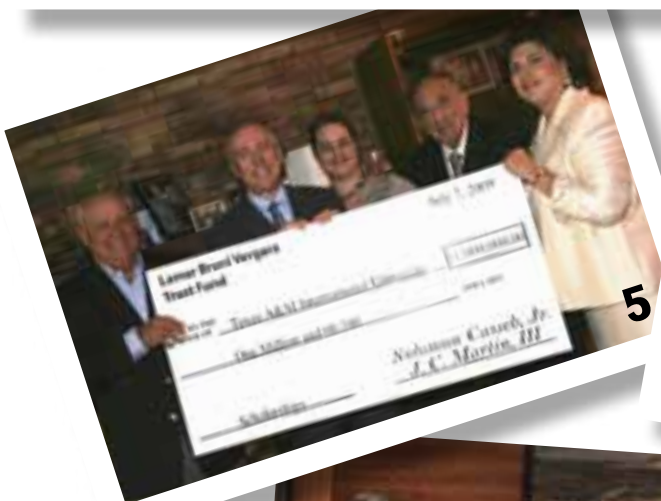
1



2



4



5



6



7

- 1 TAMIU students, faculty, staff and alumni joined in partnership with Operation Homefront of Texas for the first-ever Freedom Walk on campus Sept. 11, 2009.
- 2 Go Dustdevils! Dr. Ray Keck welcomes new Women's Basketball Head Coach David Beaver at a special news conference at the Kinesiology Convocation Center.
- 3 Texas A&M International University information systems students David Santos, Juan Reyes, and Manuel Castañeda (left to right), recently won First Place in an international video-making contest that promotes the field of information systems. The contest drew 12 participating international student groups.
- 4 Jorge Verduzco, executive vice president for sales and marketing for International Bank of Commerce (left); TAMIU President Dr. Ray Keck (center); and Claudio Arias, TAMIU Head Men's Soccer Coach (right), dedicated the new TAMIU Men's Soccer scoreboard at a recent Men's Soccer exhibition game against Our Lady of the Lake University. The scoreboard was purchased thanks to a generous donation from IBC. TAMIU and IBC Cheerleaders pictured from left to right are: Jessica Alvarado (TAMIU), Esmeralda González (IBC), and Julie Medina (TAMIU).
- 5 The Trustees of the Lamar Bruni Vergara Trust have provided Texas A&M International University (TAMIU) with a generous gift of \$1 million that will endow a scholarship fund to provide emergency financial assistance to qualified TAMIU students. Left to right, Trustee J. C. Martin III; TAMIU president Ray Keck; Trust secretary Dana Orfila; Judge Solomon Casseb Jr. and Candy Hein, TAMIU vice president for Institutional Advancement.
- 6 Shane Rinner assumes head coaching duties for the first time after serving as the associate head coach and recruiting coordinator at the University of Alaska Anchorage the last six years.
- 7 State Senator Judith Zaffirini was on hand to present a special award of \$635,895 from the Texas Higher Education Coordinating Board's Commissioner, Dr. Raymund A. Paredes in support of the Math, Science and Technology Teacher Preparation Academy at TAMIU. Left to right are College of Education dean Dr. Humberto González, COE faculty members and project directors Dr. Arturo Limón and Dr. Aleta Belcher; State Sen. Zaffirini and TAMIU president Dr. Ray Keck.

NOMINATIONS OPEN FOR TAMIU DISTINGUISHED ALUMNI AWARDS

The TAMIU Alumni Association has formed a committee to assist the University in recognizing the accomplishments of its alumni and their personal, professional and community contributions. Ten alumni will be selected as TAMIU Distinguished and recognized at a Spring ceremony.

Nominations can be made by anyone: family, friends and TAMIU employees.

Nominees must meet the following criteria.

- Provide humanitarian services and contributions to society.
- Involved in TAMIU-sponsored events or programs.
- Provided significant contributions to creating, implementing or maintaining an Alumni Association program or event.
- Display positive image of TAMIU for community.
- Achieved outstanding or noteworthy incident/activity.
- Accomplishments in his/her chosen field of endeavor or life's work.
- Volunteer or civic involvement.

Other requirements for the nomination:

- Nominees must be living graduates of TAMIU, holding a bachelor's, master's or doctoral degree.
- Nominees must be able to attend the awards ceremony.
- Current TAMIU faculty, staff, and administration are not eligible



Provide your nomination on line at www.tamtu.edu/alumni or mail to:

Texas A&M International University
Office of Alumni Relations
Alumni Selection Committee
5201 University Boulevard, Laredo, TX 78041.
For more information, call 956.326.GIVE (4483)

**Texas A&M International University
Office of Institutional Advancement
5201 University Boulevard
Laredo, Texas 78041-1900**

NON PROFIT ORG
U. S. Postage
PAID
Permit # 1457
Dallas, TX