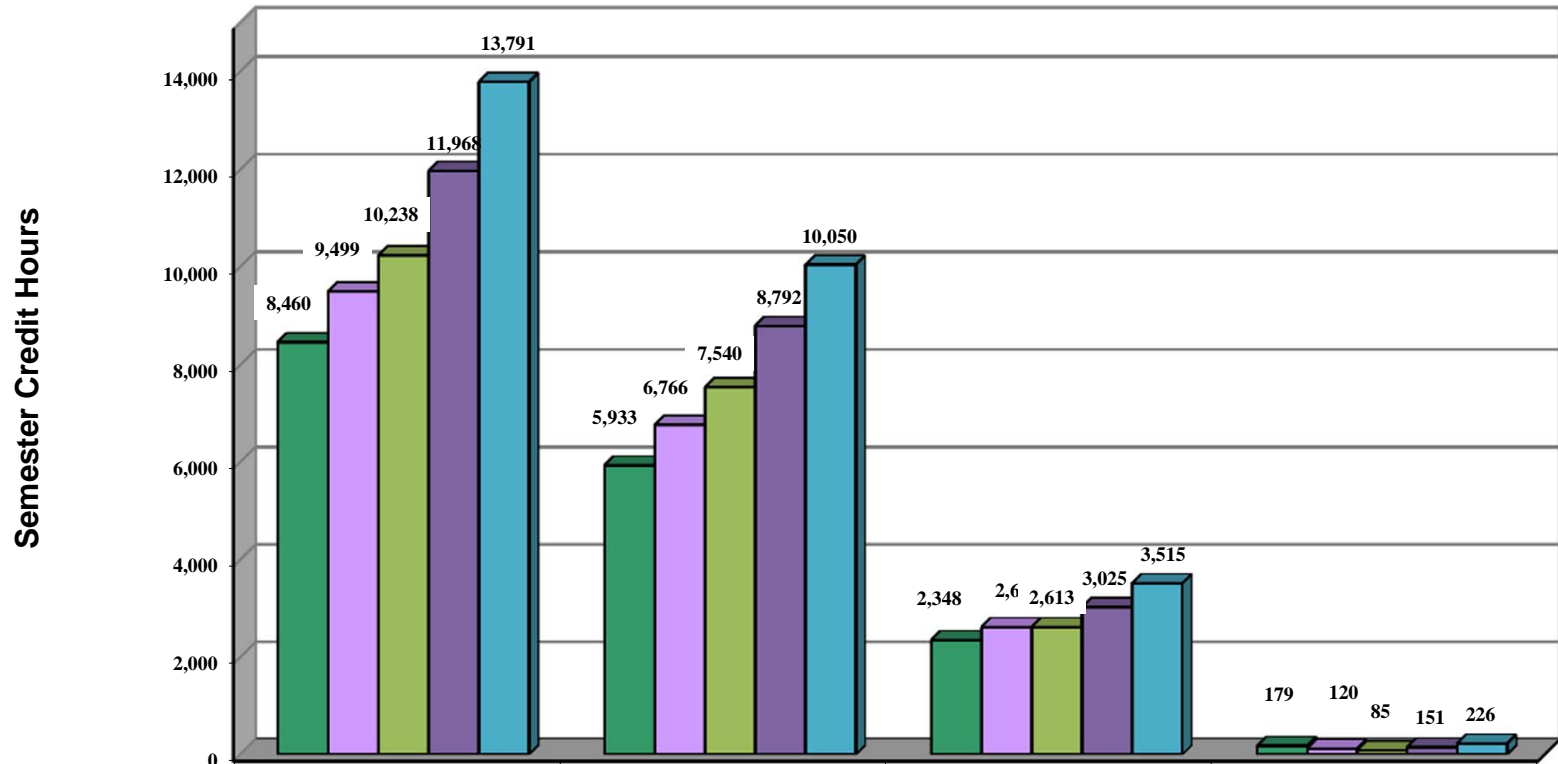


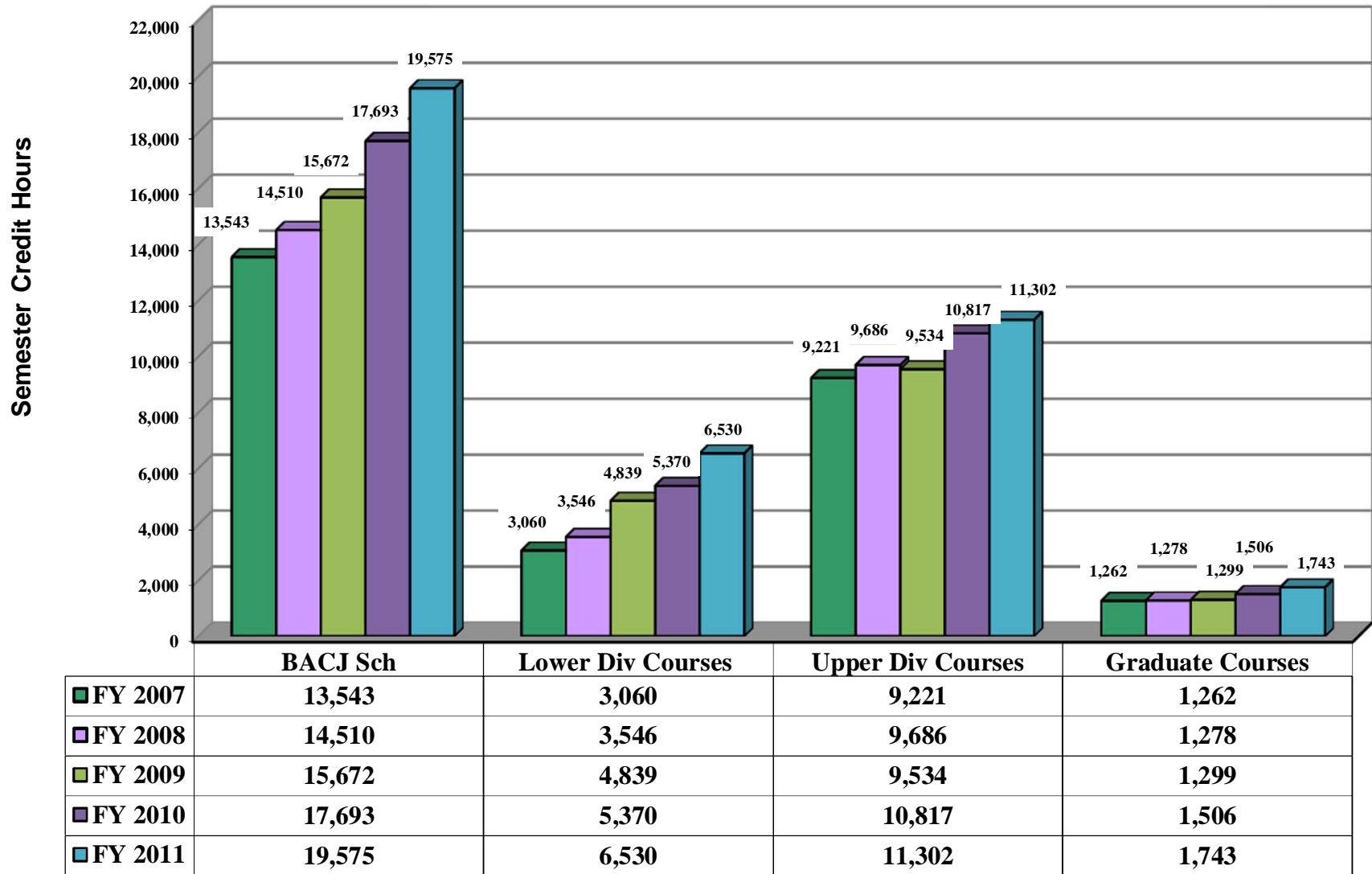
College of Arts & Sciences

Semester Credit Hours - Dept: BC

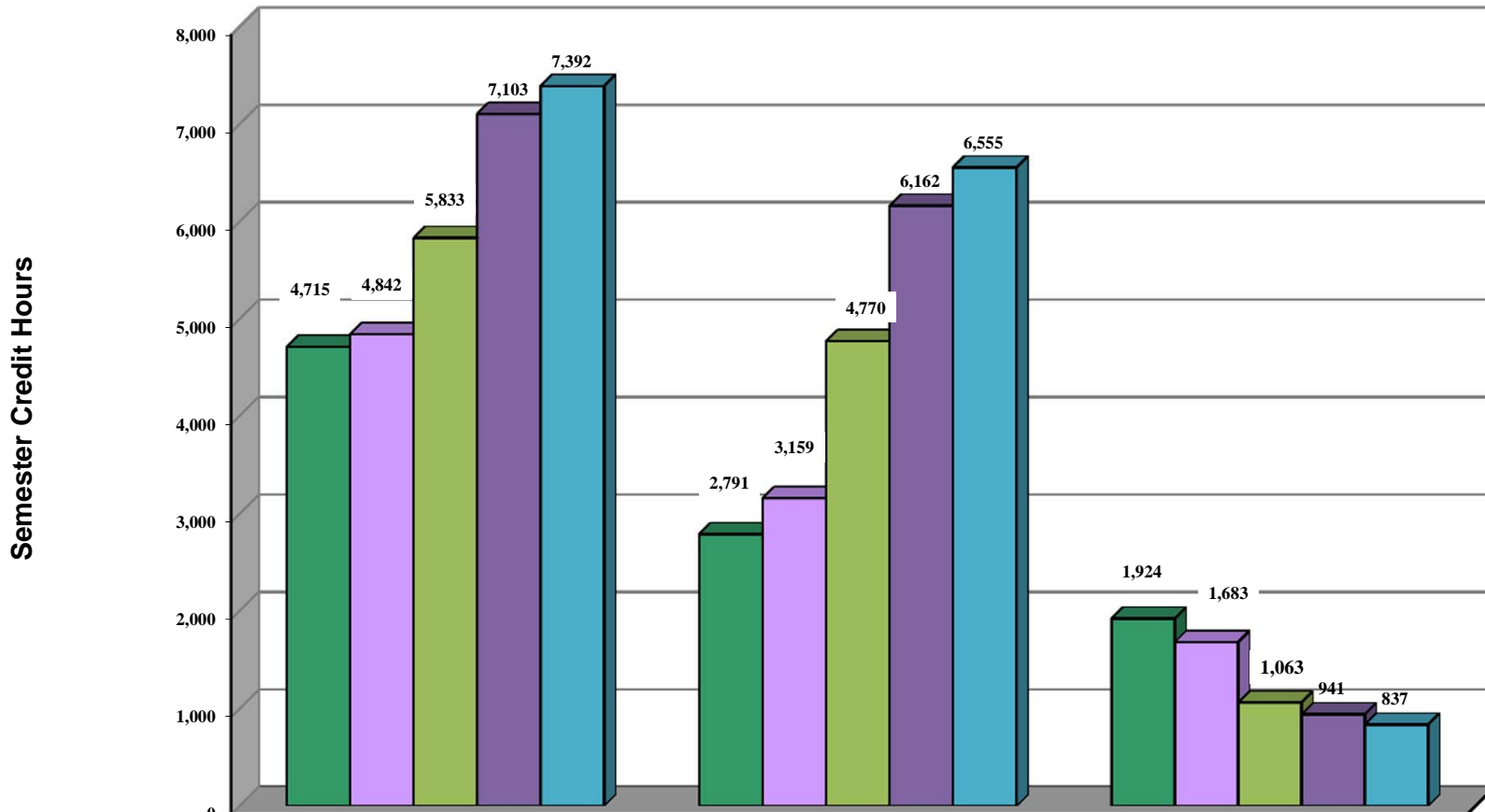


	BC Sch	Lower Div Courses	Upper Div Courses	Graduate Courses
FY 2007	8,460	5,933	2,348	179
FY 2008	9,499	6,766	2,613	120
FY 2009	10,238	7,540	2,613	85
FY 2010	11,968	8,792	3,025	151
FY 2011	13,791	10,050	3,515	226

Semester Credit Hours - Dept: BS

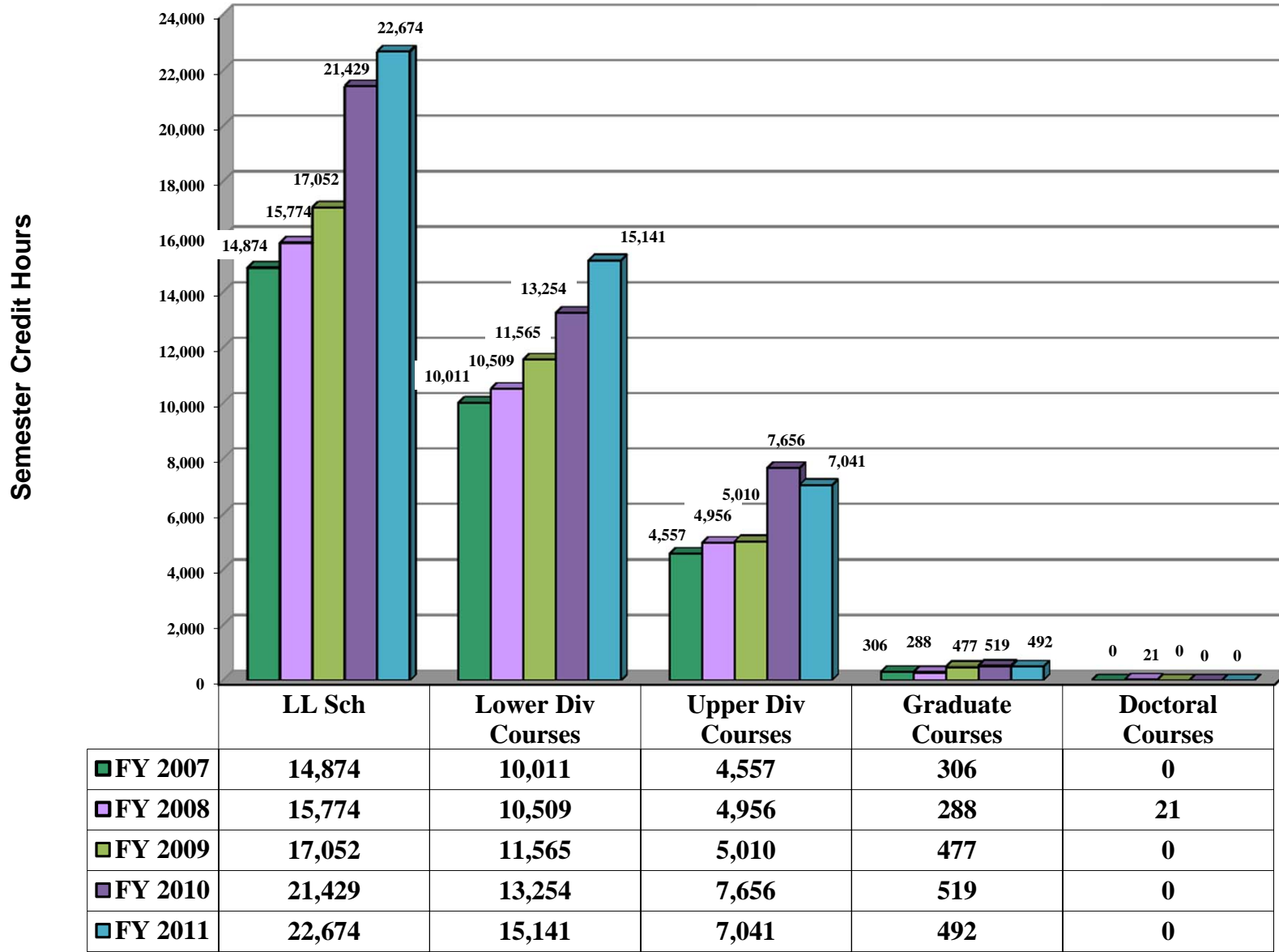


Semester Credit Hours - Dept: FPA



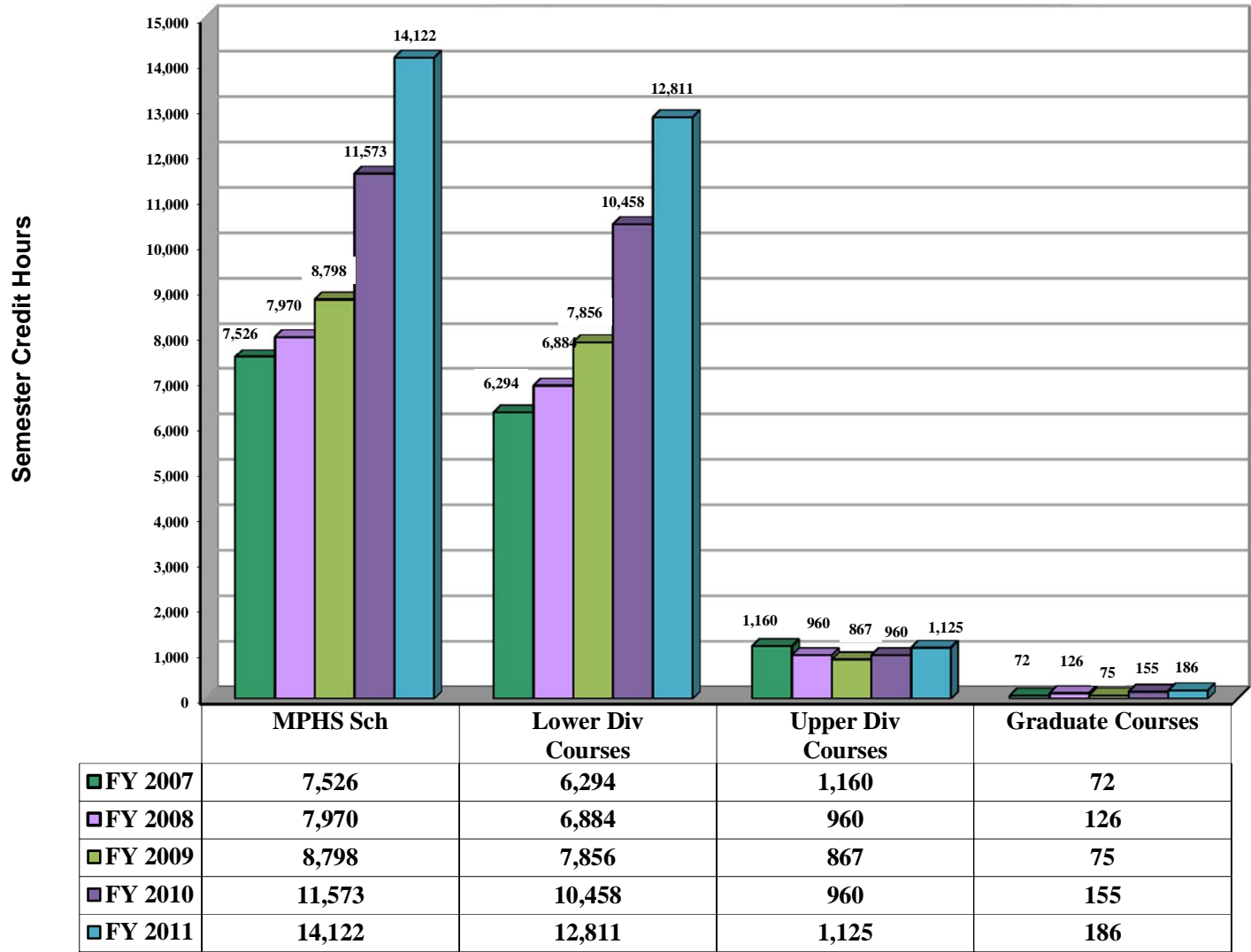
	FPA Sch	Lower Div Courses	Upper Div Courses
■ FY 2007	4,715	2,791	1,924
■ FY 2008	4,842	3,159	1,683
■ FY 2009	5,833	4,770	1,063
■ FY 2010	7,103	6,162	941
■ FY 2011	7,392	6,555	837

Semester Credit Hours - Dept: LL



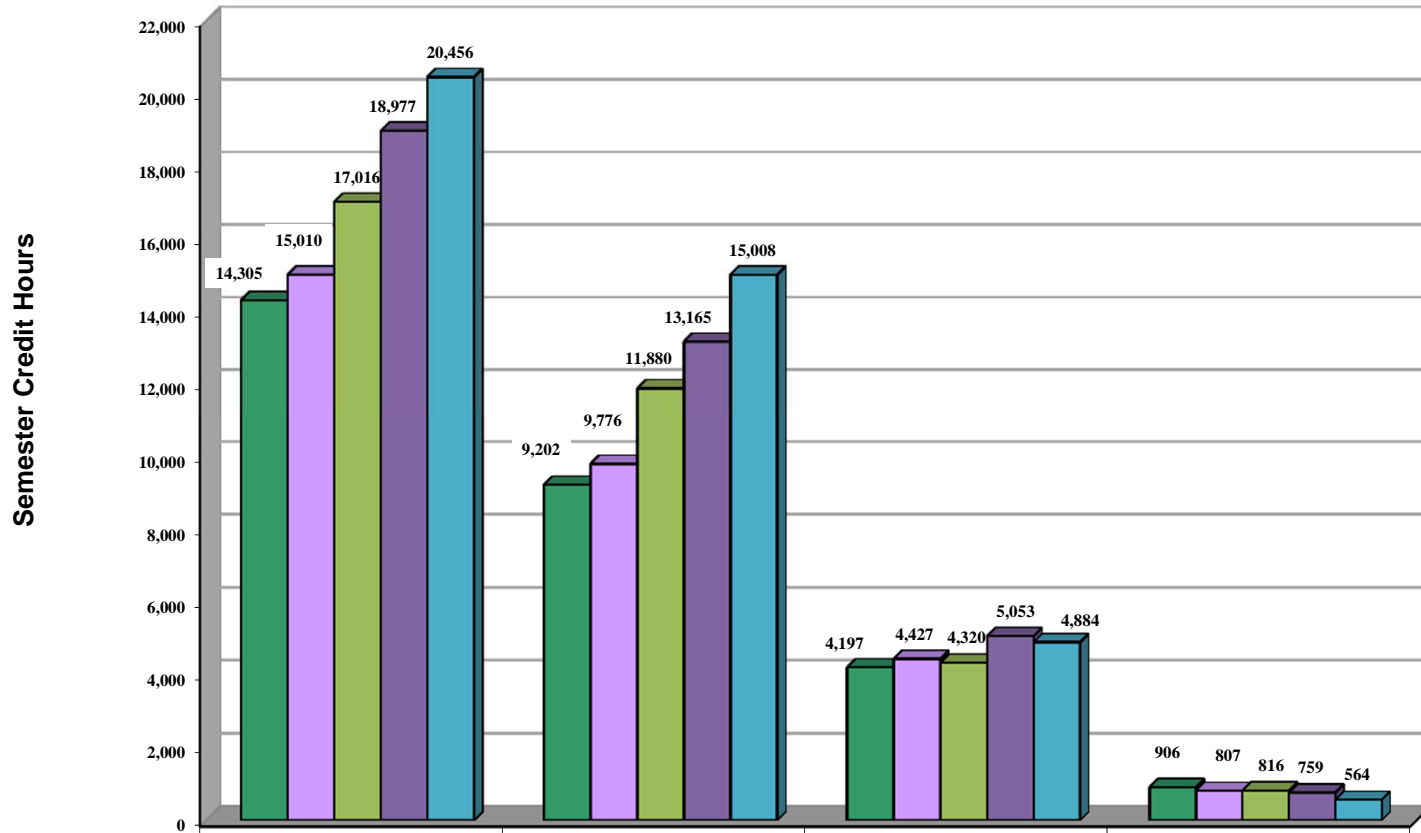
	LL Sch	Lower Div Courses	Upper Div Courses	Graduate Courses	Doctoral Courses
FY 2007	14,874	10,011	4,557	306	0
FY 2008	15,774	10,509	4,956	288	21
FY 2009	17,052	11,565	5,010	477	0
FY 2010	21,429	13,254	7,656	519	0
FY 2011	22,674	15,141	7,041	492	0

Semester Credit Hours - Dept: EMAP



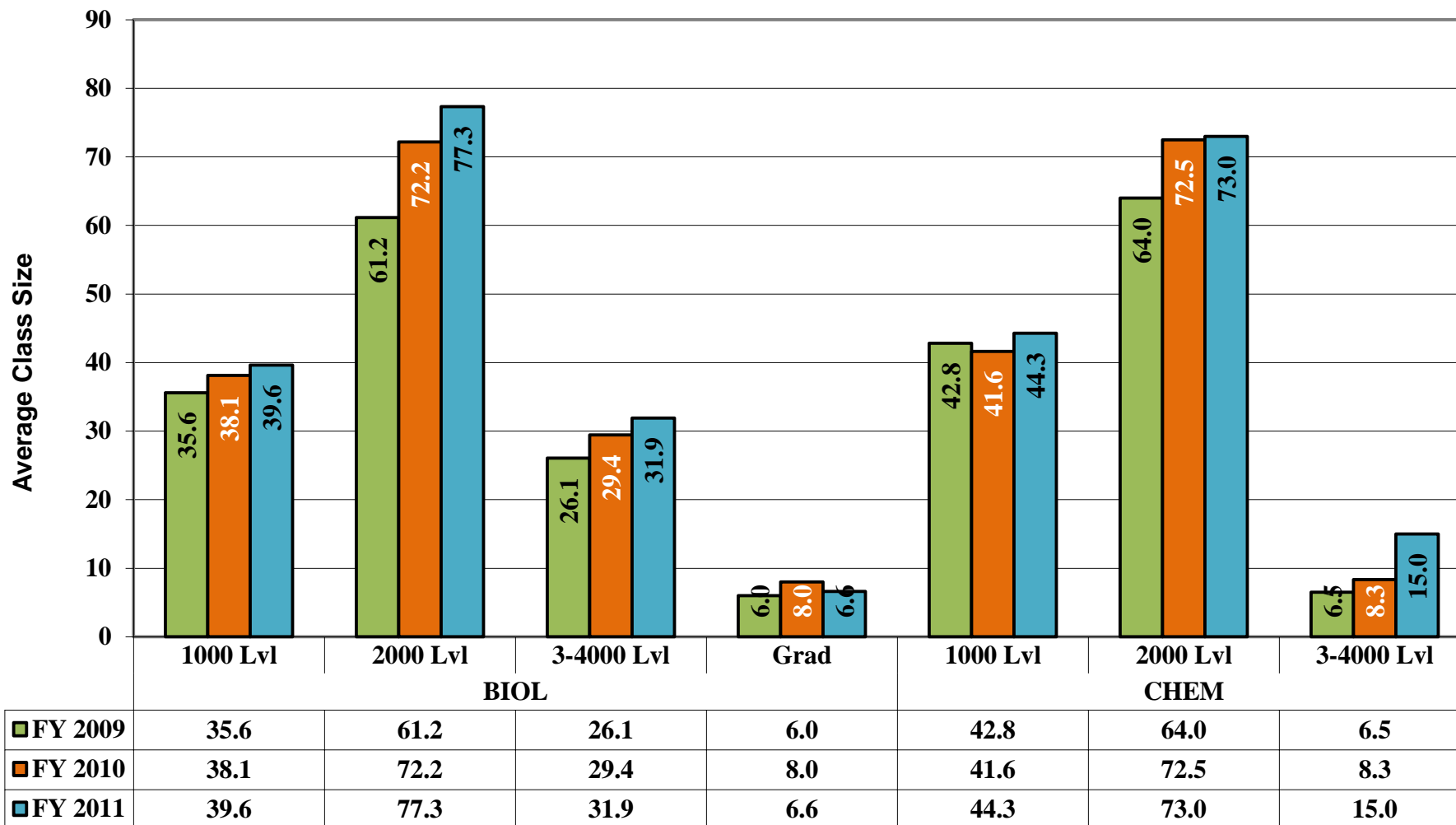
FY 2007	7,526	6,294	1,160	72
FY 2008	7,970	6,884	960	126
FY 2009	8,798	7,856	867	75
FY 2010	11,573	10,458	960	155
FY 2011	14,122	12,811	1,125	186

Semester Credit Hours - Dept: SSC

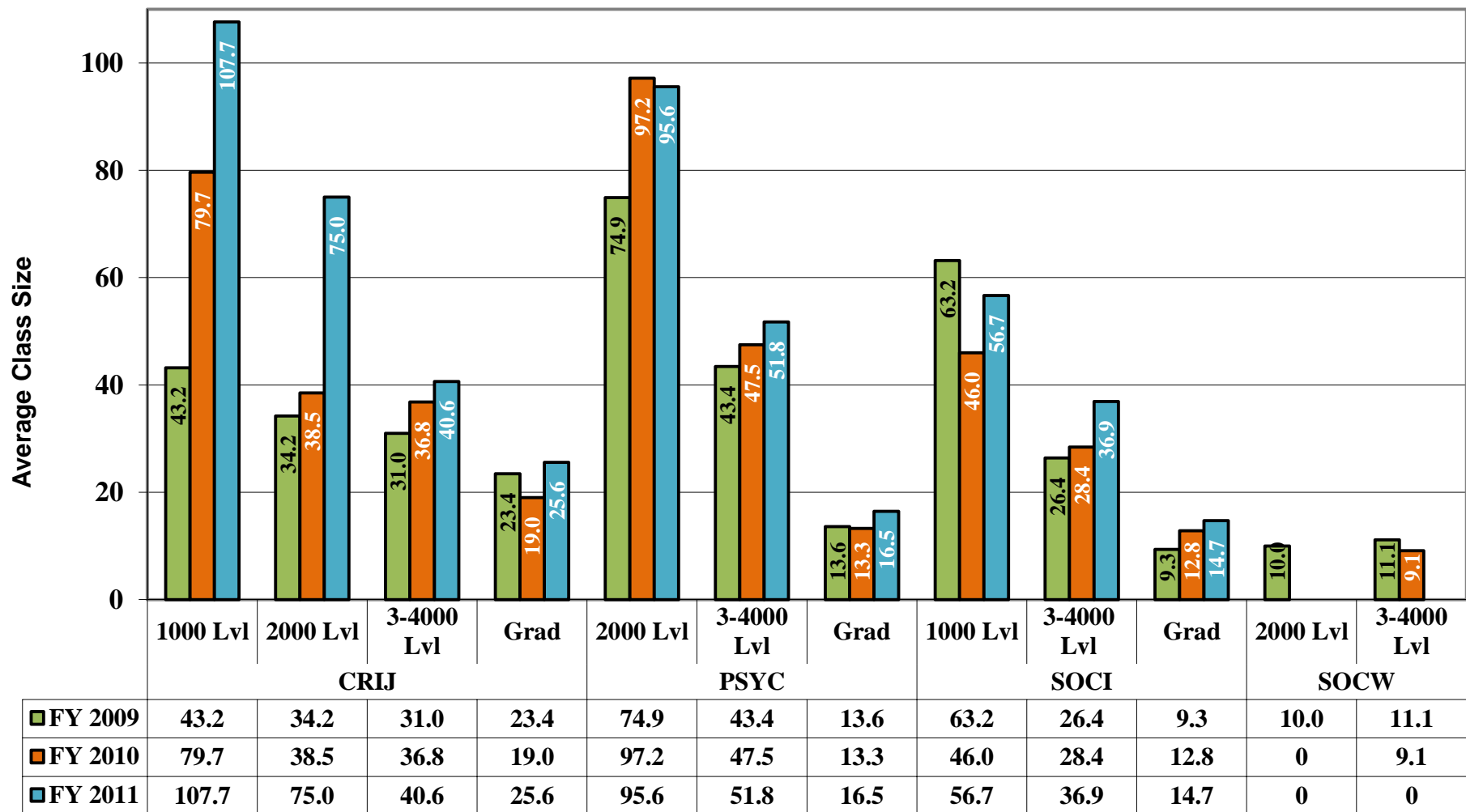


	SSC Sch	Lower Div Courses	Upper Div Courses	Graduate Courses
FY 2007	14,305	9,202	4,197	906
FY 2008	15,010	9,776	4,427	807
FY 2009	17,016	11,880	4,320	816
FY 2010	18,977	13,165	5,053	759
FY 2011	20,456	15,008	4,884	564

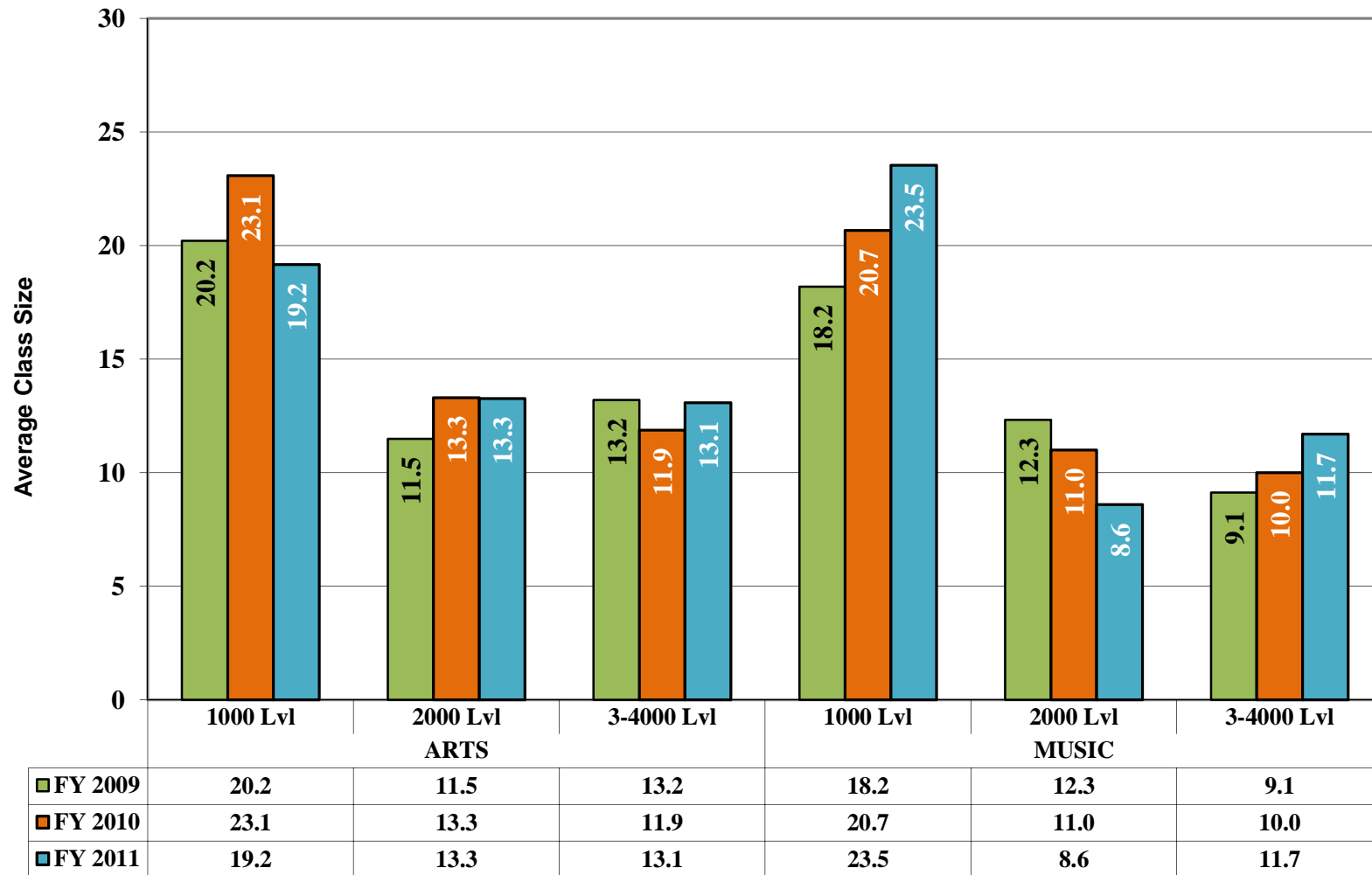
Average Class Size - Dept: BC



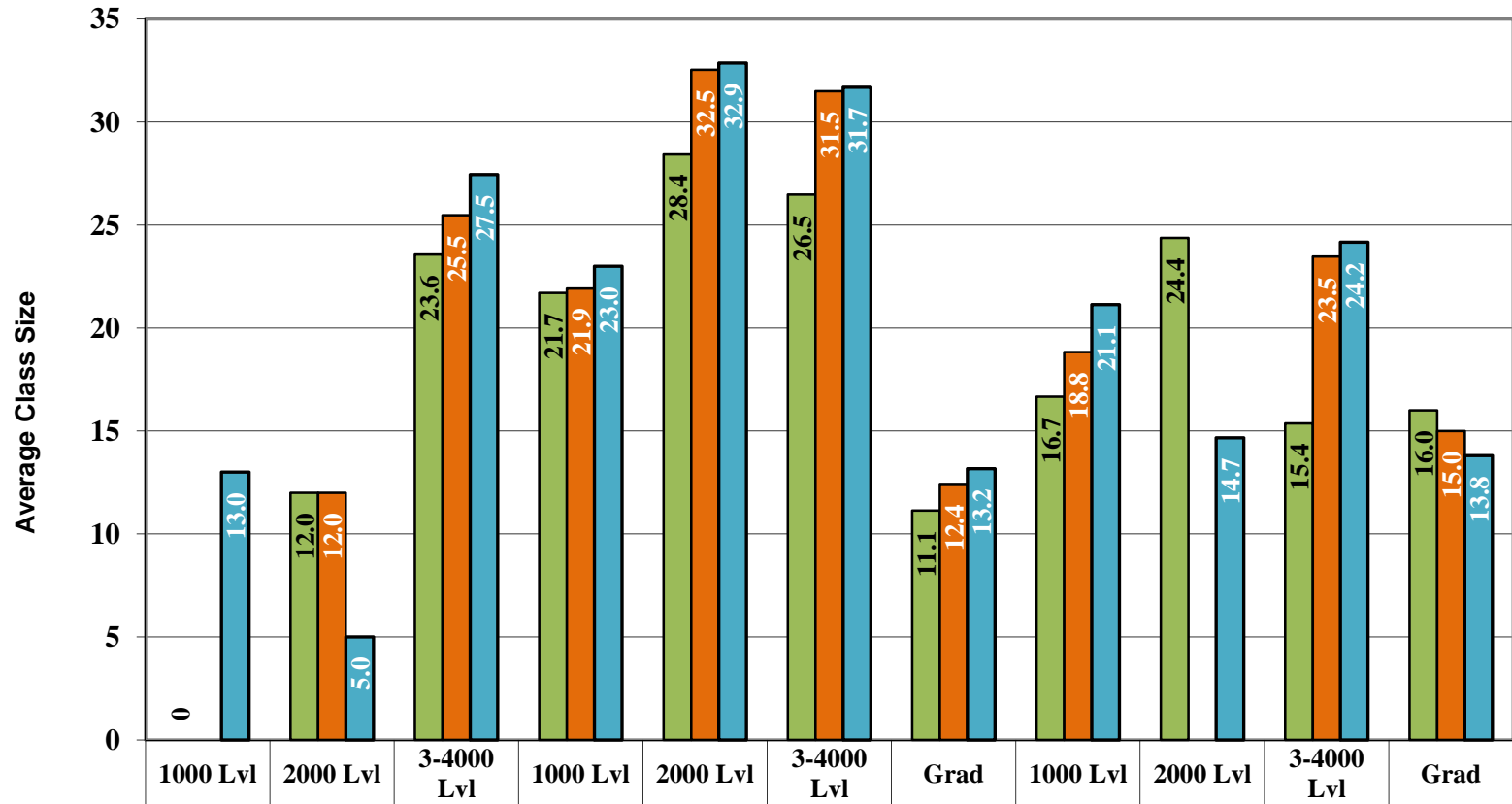
Average Class Size - Dept: BS



Average Class Size - Dept: FPA

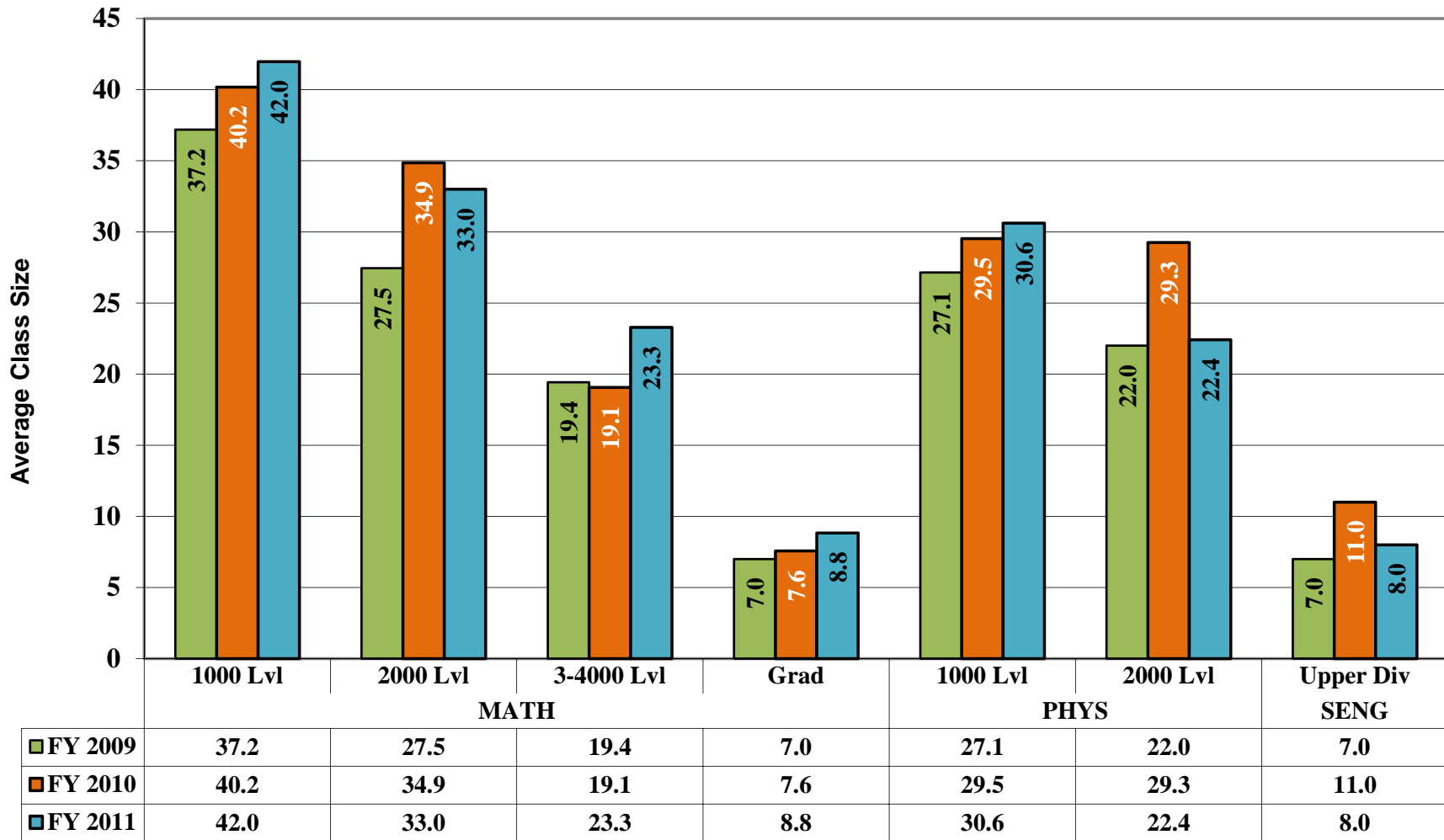


Average Class Size - Dept: LL

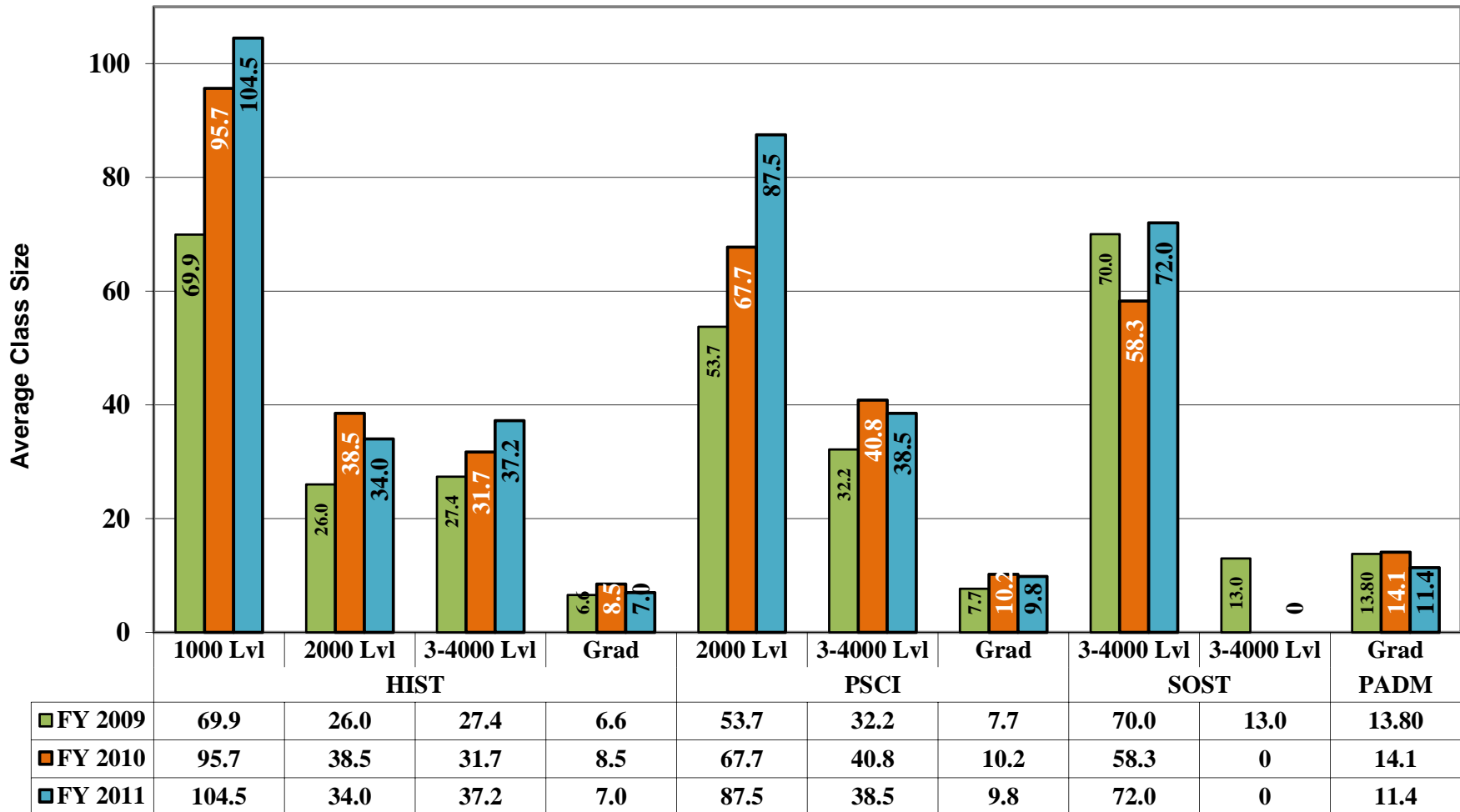


■ FY 2009	0	12.0	23.6	21.7	28.4	26.5	11.1	16.7	24.4	15.4	16.0
■ FY 2010	0	12.0	25.5	21.9	32.5	31.5	12.4	18.8	0.0	23.5	15.0
■ FY 2011	13.0	5.0	27.5	23.0	32.9	31.7	13.2	21.1	14.7	24.2	13.8

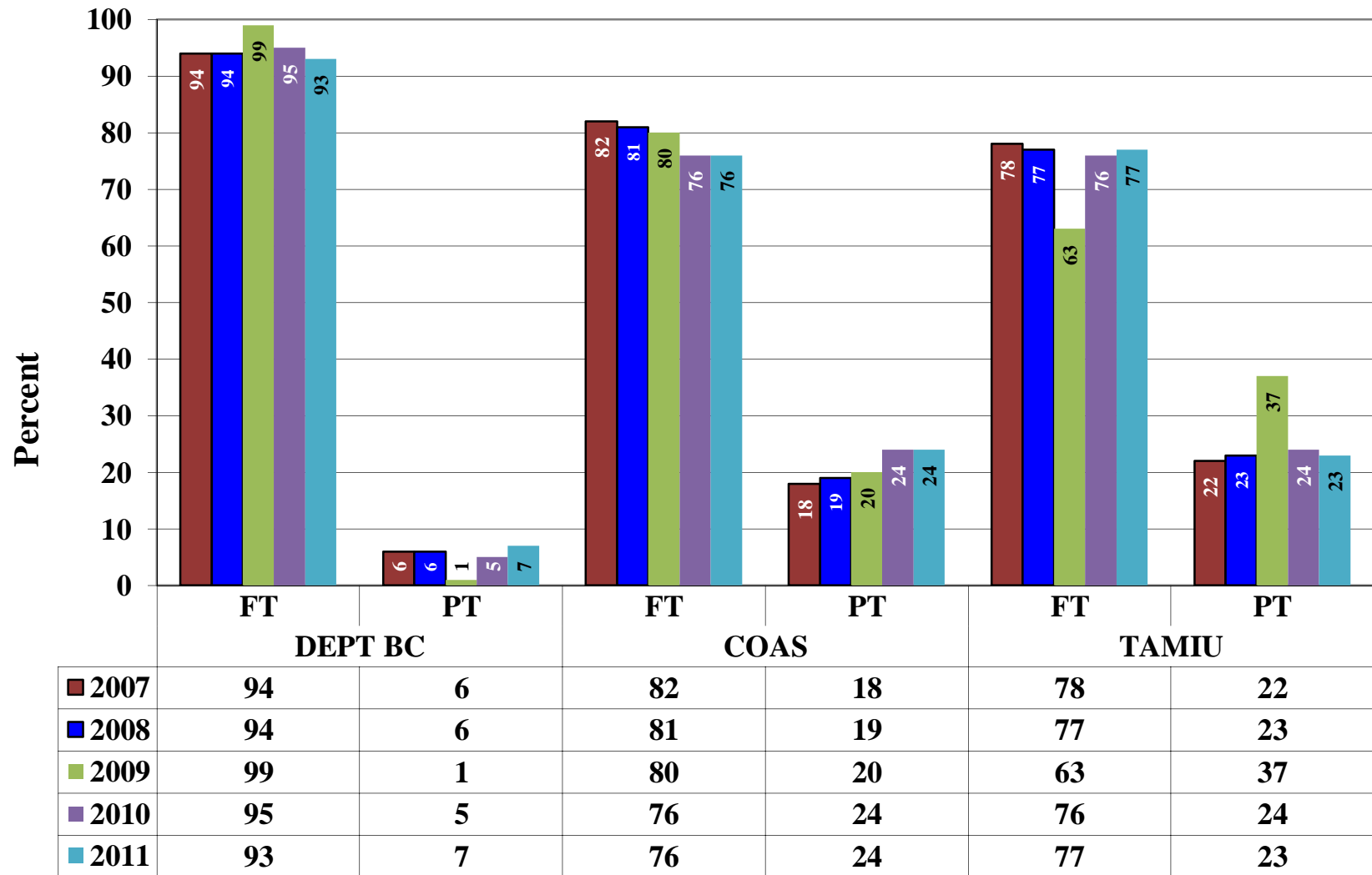
Average Class Size - Dept: EMAP



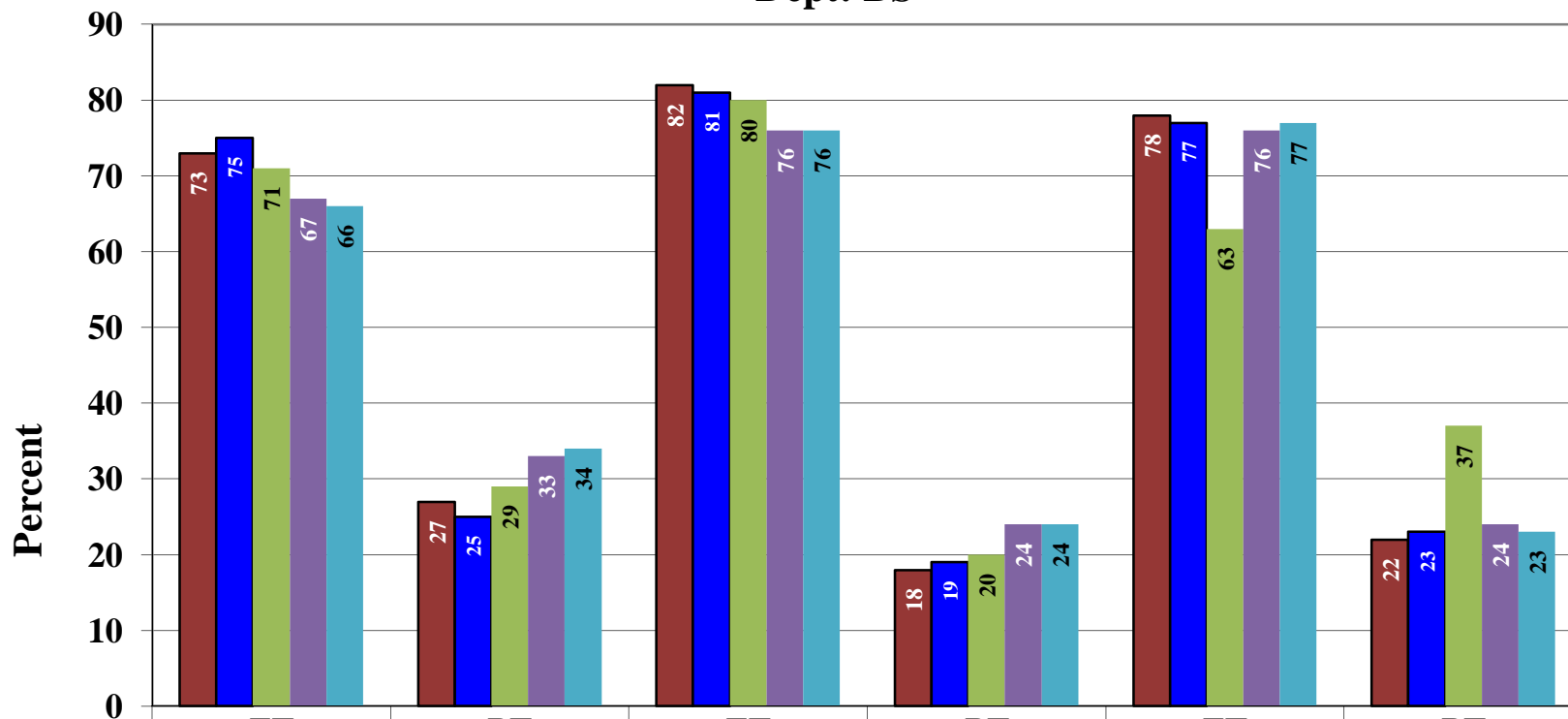
Average Class Size - Dept: SSC



**FY 07-11 Percent of SCH by Full/Part Time Faculty
Dept: BC**

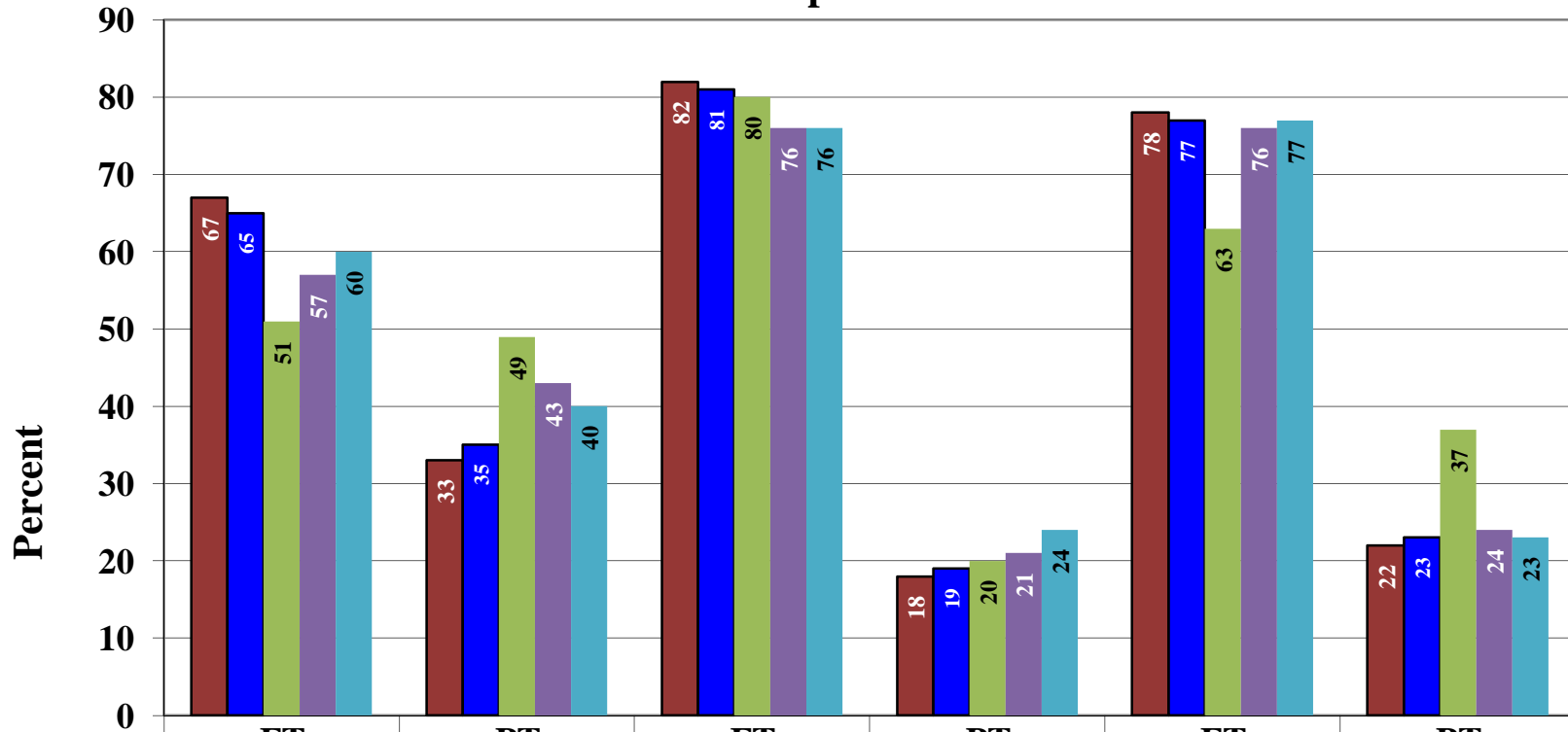


**FY 07-11 Percent of SCH by Full/Part Time Faculty
Dept: BS**



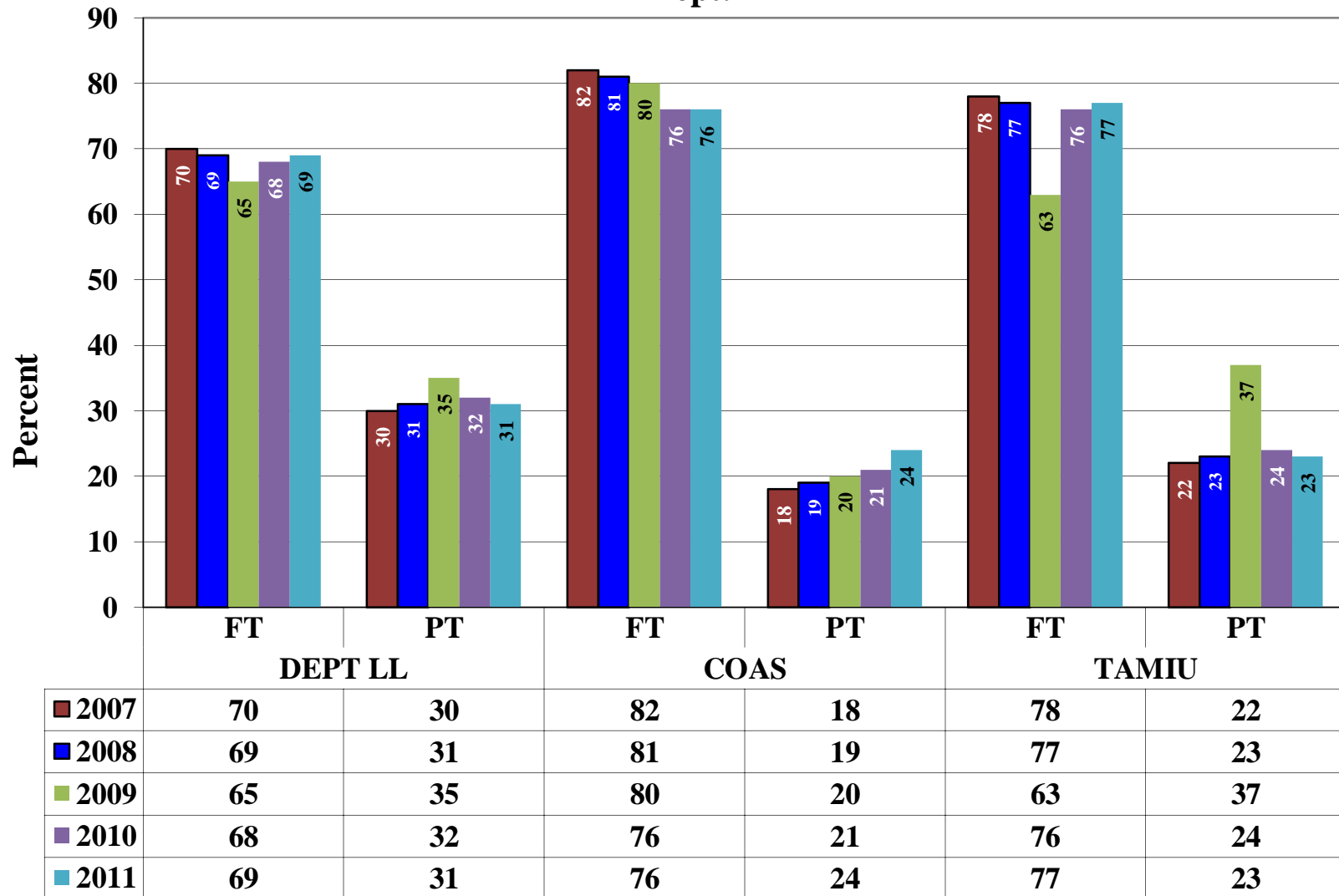
	BS		COAS		TAMIU	
	FT	PT	FT	PT	FT	PT
■ 2007	73	27	82	18	78	22
■ 2008	75	25	81	19	77	23
■ 2009	71	29	80	20	63	37
■ 2010	67	33	76	24	76	24
■ 2011	66	34	76	24	77	23

**FY 07-11 Percent of SCH by Full/Part Time Faculty
Dept: FPA**

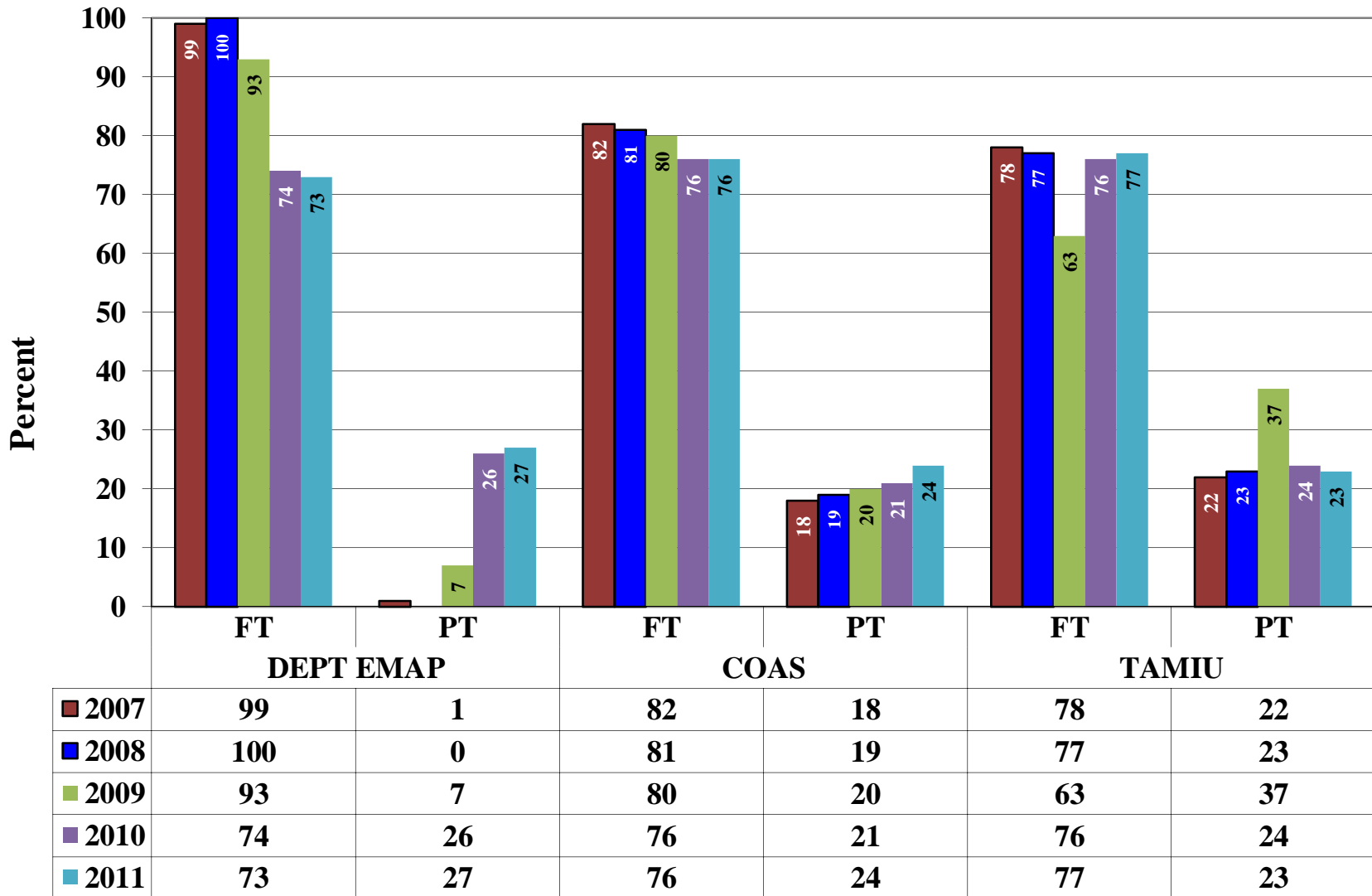


	DEPT FPA		COAS		TAMIU	
■ 2007	67	33	82	18	78	22
■ 2008	65	35	81	19	77	23
■ 2009	51	49	80	20	63	37
■ 2010	57	43	76	21	76	24
■ 2011	60	40	76	24	77	23

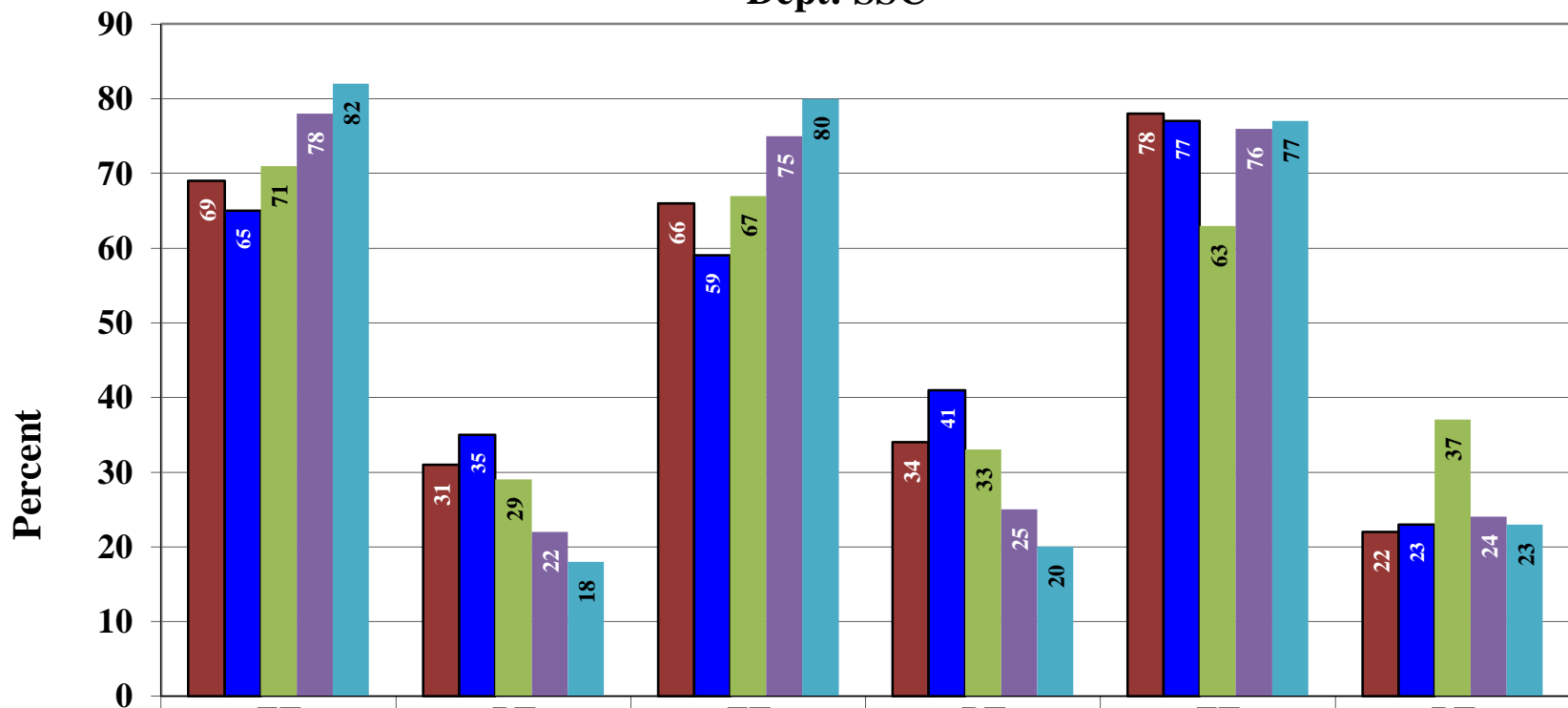
**FY 07-11 Percent of SCH by Full/Part Time Faculty
Dept: LL**



**FY 07-11 Percent of SCH by Full/Part Time Faculty
Dept: EMAP**



**FY 07-11 Percent of SCH by Full/Part Time Faculty
Dept: SSC**



	DEPT IBTS	ARSSB	TAMIU
2007	69	31	22
2008	65	35	23
2009	71	29	37
2010	78	22	24
2011	82	18	23

Faculty Salary and SCH Generated
WebFocus: IR_COST-REIMBURSEMENT-2011 as of 09/06/11

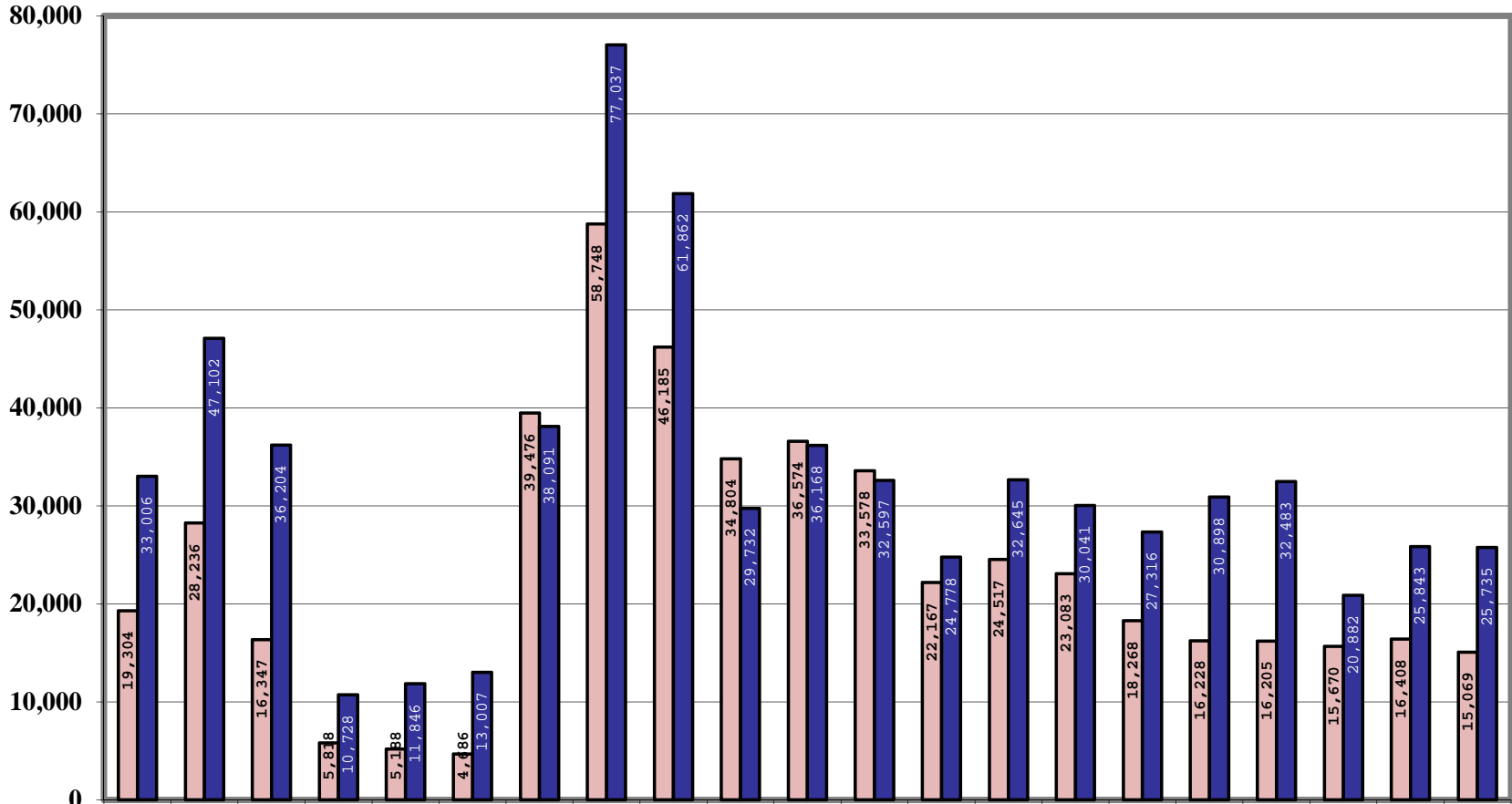
FY 2009							
Col	Dept	Degrees	Salary(cost)	Cost per Degr	\$ Gen	Reimburs per Degr	Dif from Salary
COAS	BC	38	733,538.08	19,303.63	1,254,225.63	33,005.94	520,687.55
	BS	146	849,477.69	5,818.34	1,566,225.31	10,727.57	716,747.62
	EMAP	19	750,045.02	39,476.05	723,721.54	38,090.61	-26,323.48
	FPA	20	696,079.10	34,803.96	594,638.19	29,731.91	-101,440.91
	LL	52	1,152,681.90	22,166.96	1,288,438.47	24,777.66	135,756.57
	SSC	49	895,152.48	18,268.42	1,338,463.50	27,315.58	443,311.02
Total COAS		324	5,076,974.27	15,669.67	6,765,712.64	20,881.83	1,688,738.37
ARSSB	IBFS	120	1,057,214.00	8,810.12	1,575,169.35	13,126.41	517,955.35
	IBTS	200	964,846.25	4,824.23	1,746,425.97	8,732.13	781,579.72
	Total ARSSB	320	2,022,060.25	6,318.94	3,321,595.32	10,379.99	1,299,535.07
COED	CI	195	543,048.85	2,784.87	887,944.98	4,553.56	344,896.13
	PPRO	112	706,786.26	6,310.59	1,176,791.91	10,507.07	470,005.65
	TCHP	38	662,269.35	17,428.14	1,161,242.96	30,559.03	498,973.61
	Total COED	345	1,912,104.46	5,542.33	3,225,979.85	9,350.67	1,313,875.39
NH	NURS	31	530,294.46	17,106.27	922,485.21	29,757.59	392,190.75
	Total NH	31	530,294.46	17,106.27	922,485.21	29,757.59	392,190.75
UC	DEVS		300,191.83		177,355.10		-122,836.73
	Total UC		300,191.83		177,355.10		-122,836.73
Total			9,841,625.27		14,413,128.12		4,571,502.85

FY 2010							
Col	Dept	Degrees	Salary(cost)	Cost per Degr	\$ Gen	Reimburs per Degr	Dif from Salary
COAS	BC	34	960,016.39	28,235.78	1,601,471.90	47,102.11	641,455.51
	BS	158	819,634.50	5,187.56	1,871,640.46	11,845.83	1,052,005.96
	EMAP	13	763,725.63	58,748.13	1,001,483.61	77,037.20	237,757.98
	FPA	19	694,898.17	36,573.59	687,194.94	36,168.15	-7,703.23
	LL	55	1,348,440.50	24,517.10	1,795,477.53	32,645.05	447,037.03
	SSC	50	811,393.25	16,227.87	1,544,916.93	30,898.34	733,523.68
Total COAS		329	5,398,108.44	16,407.62	8,502,185.37	25,842.51	3,104,076.93
ARSSB	IBFS	112	1,106,213.26	9,876.90	1,670,281.71	14,913.23	564,068.45
	IBTS	256	904,909.25	3,534.80	1,850,527.26	7,228.62	945,618.01
	Total ARSSB	368	2,011,122.51	5,465.01	3,520,808.97	9,567.42	1,509,686.46
COED	CI	196	381,822.34	1,948.07	594,445.04	3,032.88	212,622.70
	PPRO	112	803,414.22	7,173.34	1,249,220.80	11,153.76	445,806.58
	TCHP	32	688,881.50	21,527.55	1,225,961.80	38,311.31	537,080.30
	Total COED	340	1,874,118.06	5,512.11	3,069,627.64	9,028.32	1,195,509.58
NH	NURS	68	498,922.44	7,337.09	798,738.25	11,746.15	299,815.81
	Total NH	68	498,922.44	7,337.09	798,738.25	11,746.15	299,815.81
UC	DEVS		252,505.00		195,587.55		-56,917.45
	Total UC		252,505.00		195,587.55		-56,917.45
Total			10,034,776.45		16,086,947.78		6,052,171.33

Faculty Salary and SCH Generated
WebFocus: IR_COST-REIMBURSEMENT-2011 as of 09/06/11

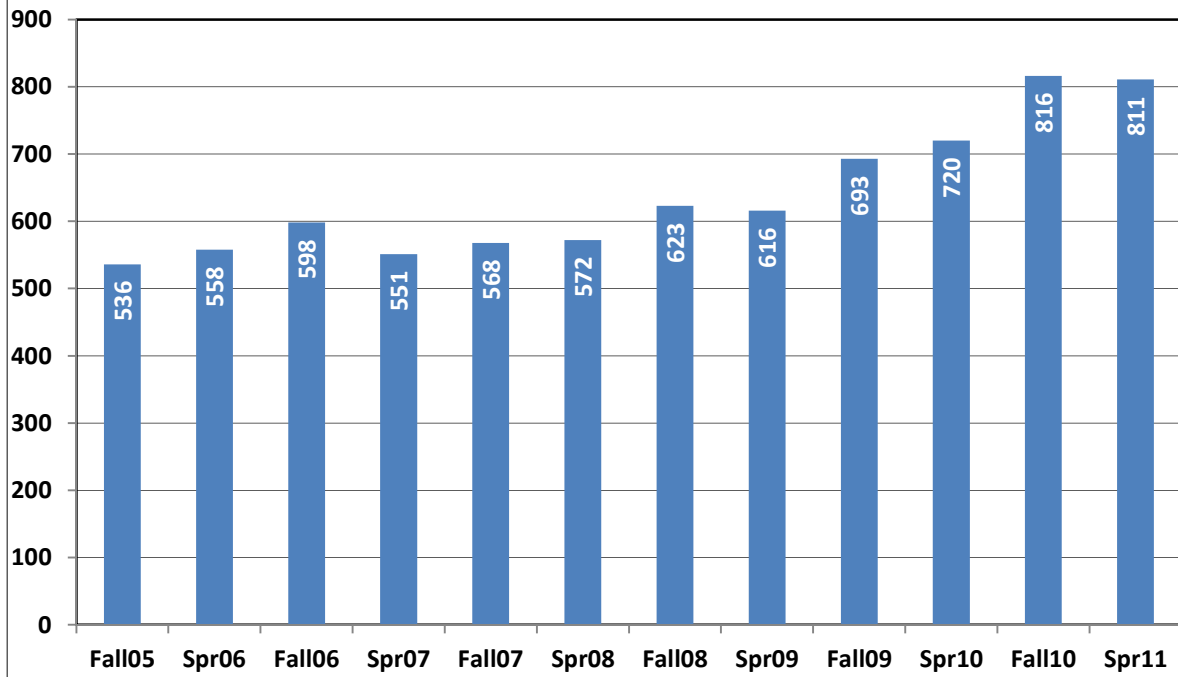
FY 2011							
Col	Dept	Degrees	Salary	Cost per Degr	\$ Gen	Reimburs per Degr	Dif from Salary
COAS	BC	52	850,035.70	16,346.84	1,882,589.82	36,203.65	1,032,554.12
	BS	158	740,410.00	4,686.14	2,055,135.38	13,007.19	1,314,725.38
	EMAP	20	923,696.28	46,184.81	1,237,234.49	61,861.72	313,538.21
	FPA	22	738,706.38	33,577.56	717,137.52	32,597.16	-21,568.86
	LL	61	1,408,075.11	23,083.20	1,832,476.71	30,040.60	424,401.60
	SSC	49	794,062.20	16,205.35	1,591,649.22	32,482.64	797,587.02
Total COAS		362	5,454,985.67	15,069.02	9,316,223.14	25,735.42	3,861,237.47
ARSSB	IBFS	89	1,026,663.50	11,535.54	1,535,347.32	17,251.09	508,683.82
	IBTS	214	946,227.70	4,421.62	1,521,278.46	7,108.78	575,050.76
	Total ARSSB	303	1,972,891.20	6,511.19	3,056,625.78	10,087.87	1,083,734.58
COED	CI	151	443,436.57	2,936.67	550,162.70	3,643.46	106,726.13
	PPRO	105	852,660.99	8,120.58	1,322,576.27	12,595.96	469,915.28
	TCHP	37	715,323.53	19,333.07	1,204,105.68	32,543.40	488,782.15
Total COED		293	2,011,421.09	6,864.92	3,076,844.65	10,501.18	1,065,423.56
NH	NURS	71	507,808.42	7,152.23	912,784.79	12,856.12	404,976.37
	Total NH	71	507,808.42	7,152.23	912,784.79	12,856.12	404,976.37
UC	DEVS		406,836.58		210,513.15		-196,323.43
	Total UC		406,836.58		210,513.15		-196,323.43
Total			10,353,942.96		16,572,991.51		6,219,048.55

Cost vs Reimbursement per Degree - COAS

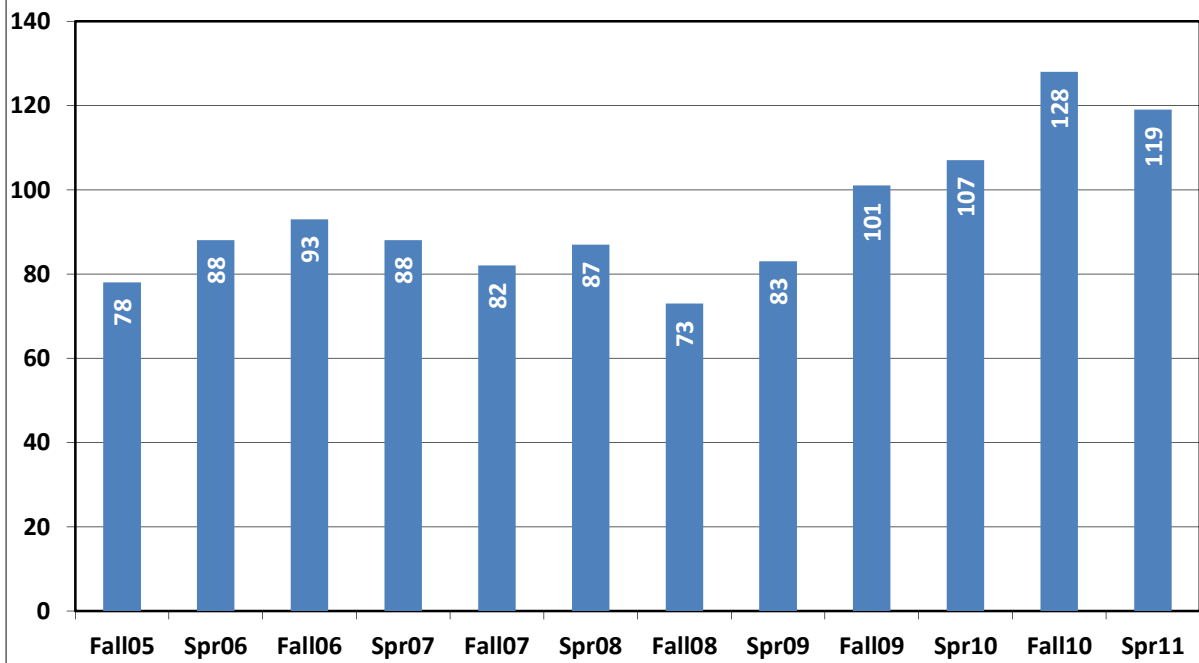


■ Cost per Degr	19304	28236	16347	5818	5188	4686	39476	58748	46185	34804	36574	33578	22167	24517	23083	18268	16228	16205	15670	16408	15069
■ Reimburs per Degr	33006	47102	36204	10728	11846	13007	38091	77037	61862	29732	36168	32597	24778	32645	30041	27316	30898	32483	20882	25843	25735

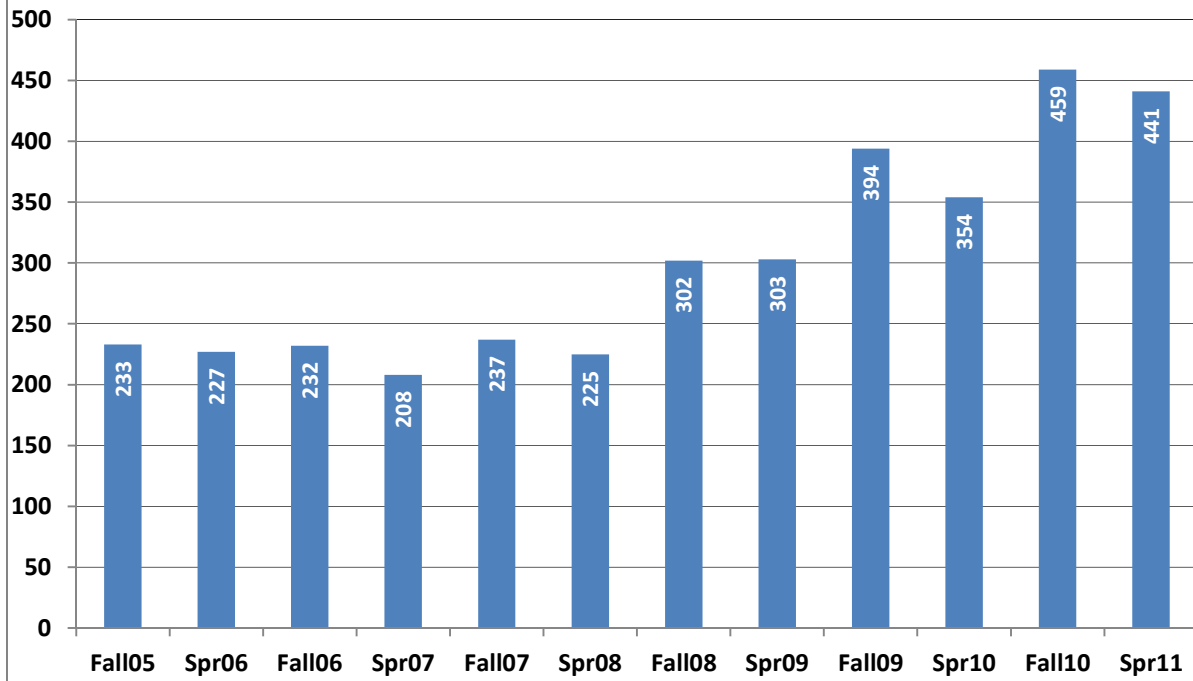
Undergraduate Majors for BS



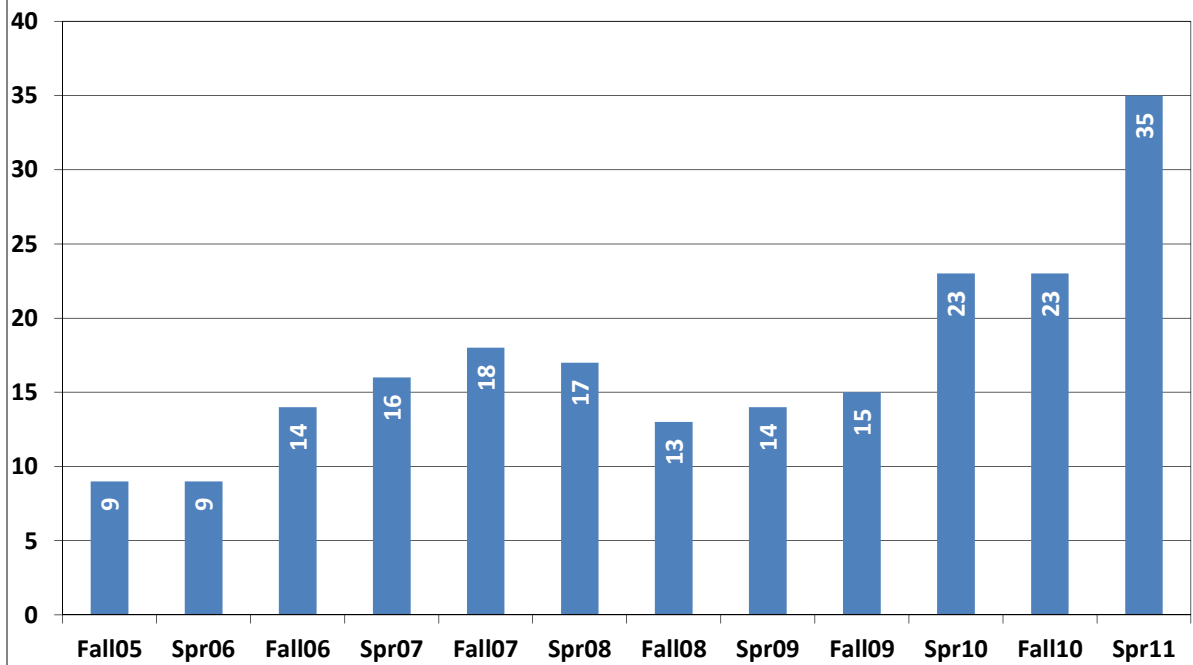
Graduate Majors for BS



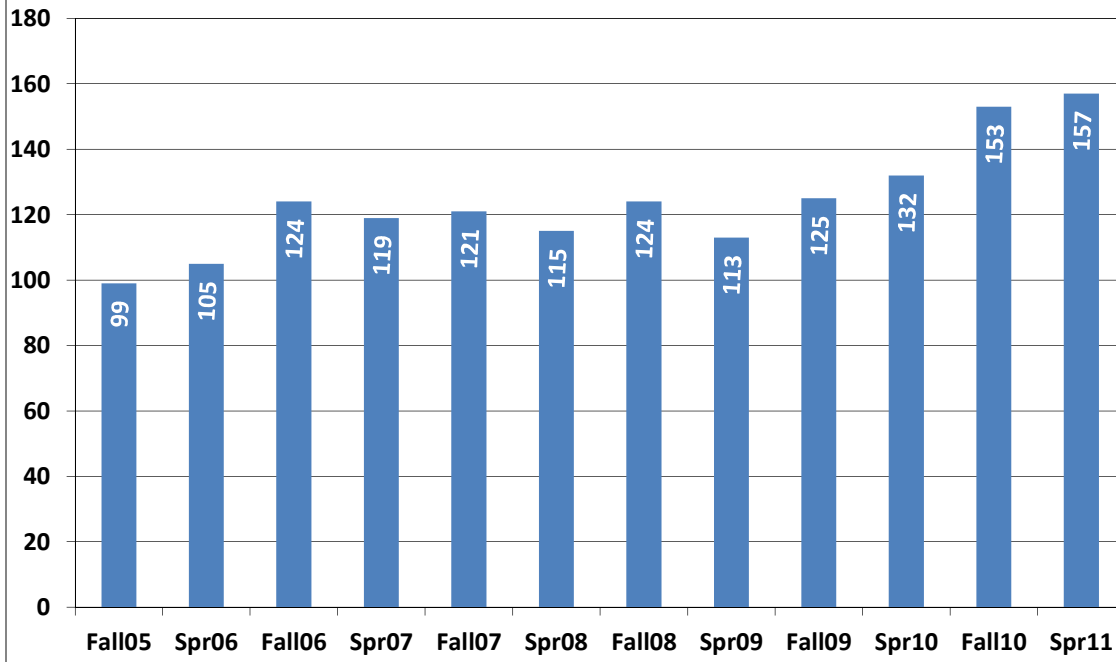
Undergraduate Majors for BC



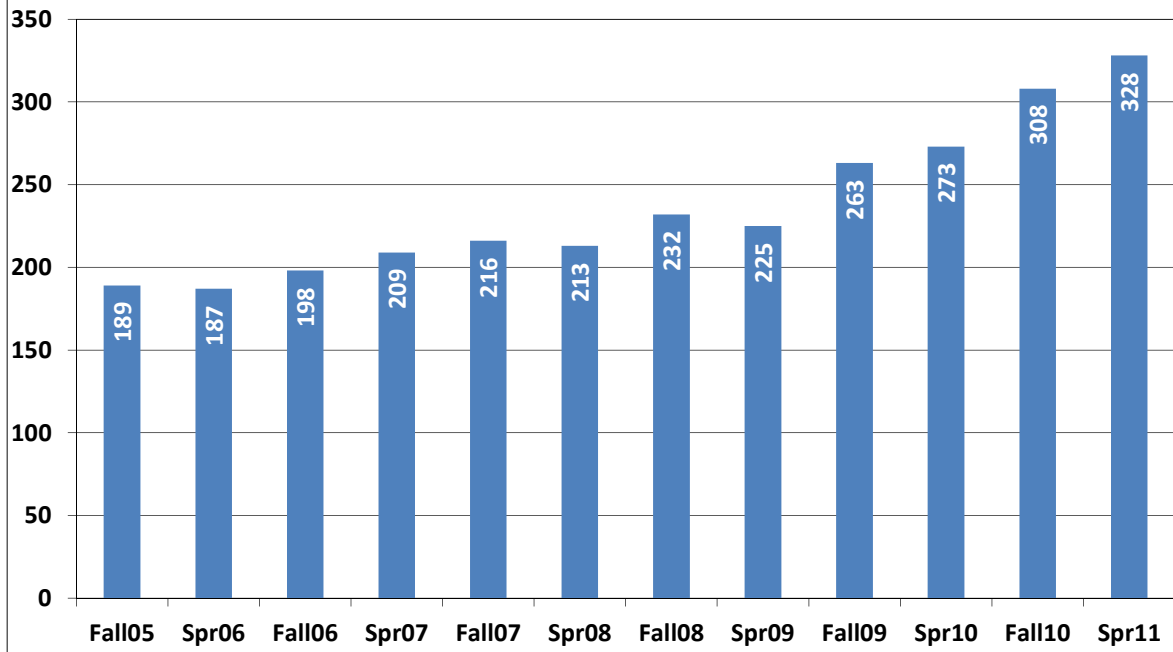
Graduate Majors for BC



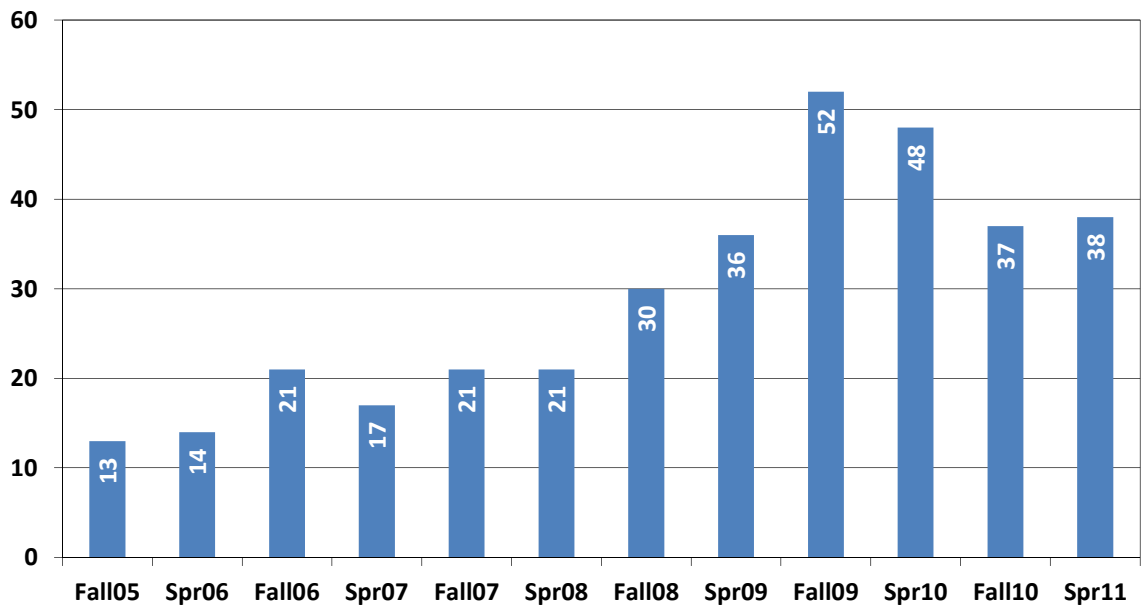
Undergraduate Majors for FPA



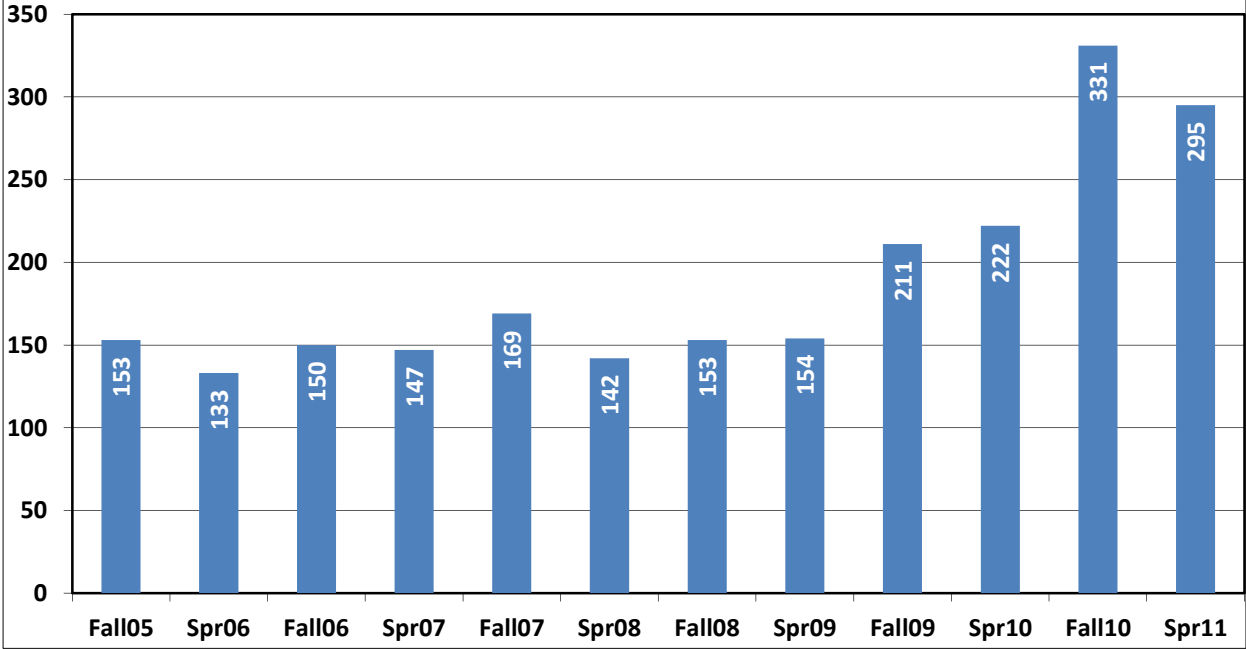
Undergraduate Majors for LL



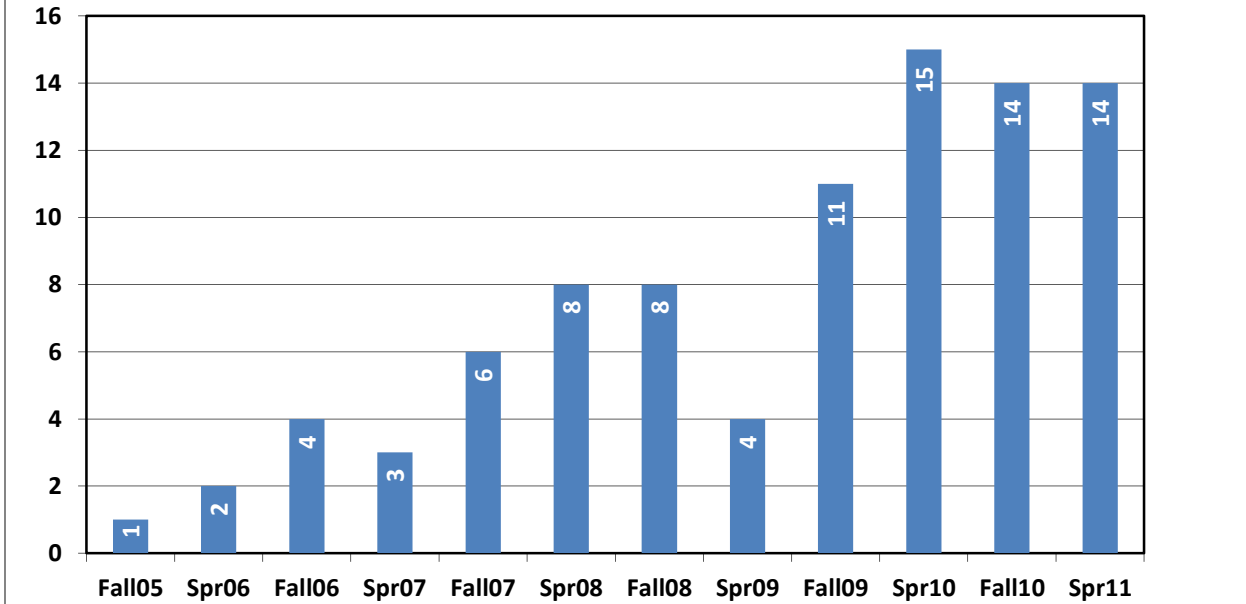
Graduate Majors for LL



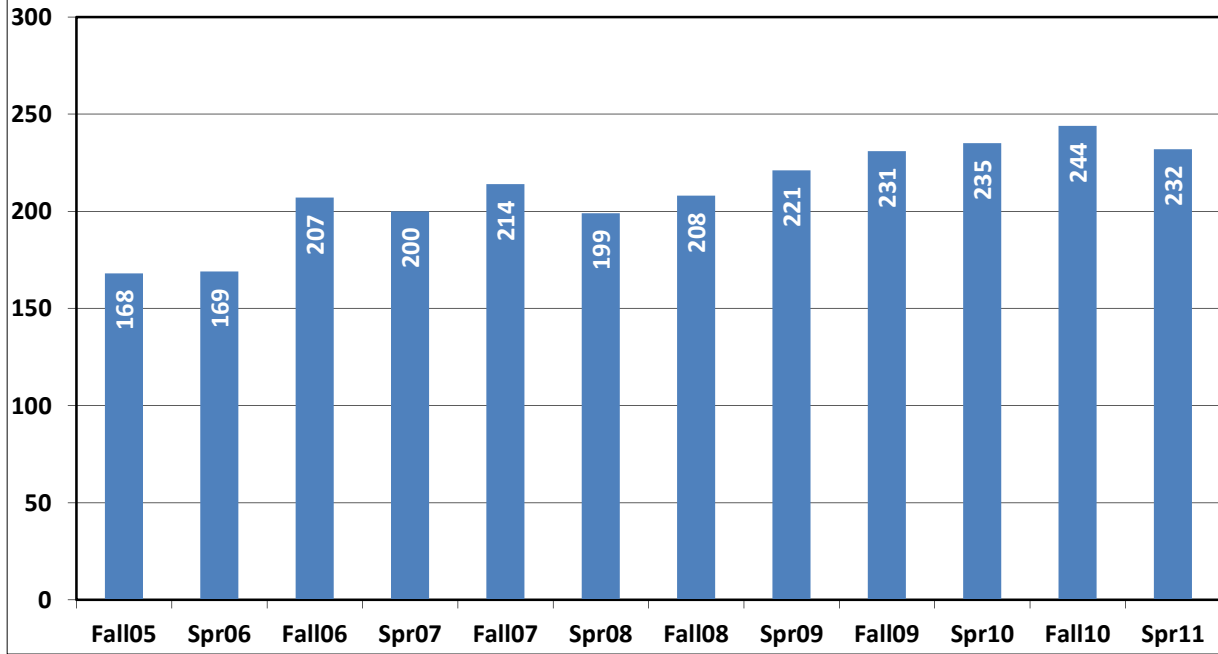
Undergraduate Majors for EMAP



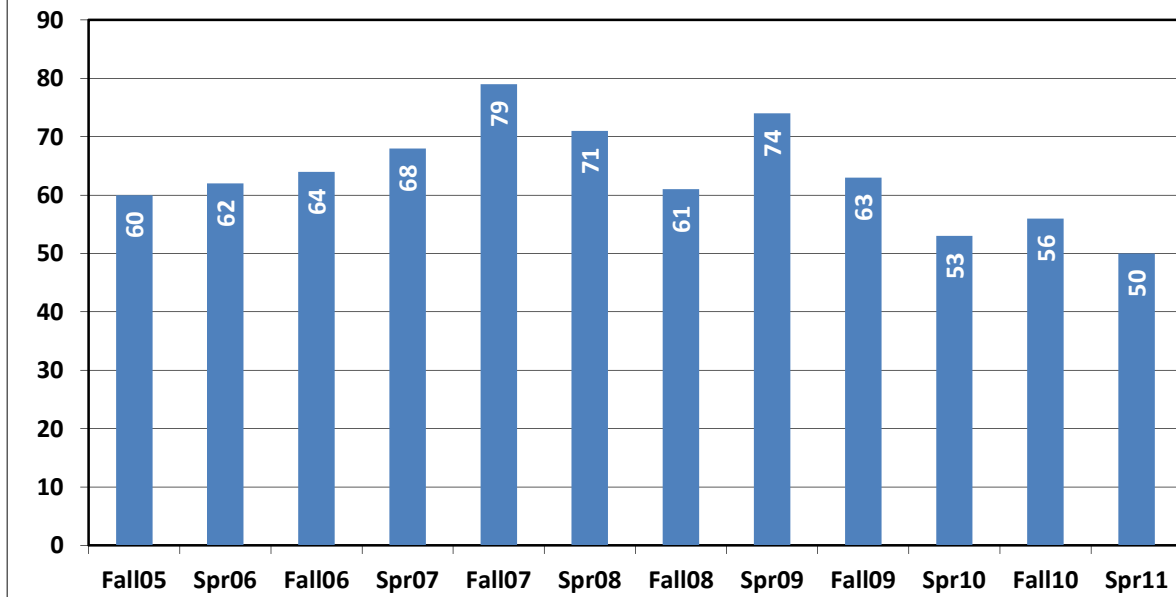
Graduate Majors for EMAP



Undergraduate Majors for SSC



Graduate Majors for SSC



ENROLLMENT BY MAJOR - UNDERGRADUATE

FOC: IR_ENROLLMENT_BY_MAJOR

UNDERGRADUATE

ARTS&SCIENCES		DEPT	F05	SP06	F06	SP07	F07	SP08	F08	SP09	F09	SP10	F10	SP11
PSYCHOLOGY	BACJ		203	201	207	190	210	220	243	261	301	288	327	324
SOCIOLOGY	BACJ		28	26	29	29	27	30	33	34	34	41	50	50
CRIMINAL JUSTICE	BACJ		268	289	325	295	303	293	326	301	347	382	439	437
SOCIAL WORK	BACJ		37	42	37	37	28	28	21	20	11	9		
			536	558	598	551	568	571	623	616	693	720	816	811
BIOLOGY	BC		194	188	194	170	203	192	257	270	342	313	396	378
CHEMISTRY	BC		27	20	22	22	20	18	30	18	22	19	34	29
ENVIRONMENTAL SCIENCE	BC			2	5	8	7	8	9	9	15	14	15	19
SCIENCE	BC		12	17	11	8	7	7	6	6	15	8	14	15
			233	227	232	208	237	225	302	303	394	354	459	441
ART	FPA		40	50	57	57	60	58	58	53	55	65	83	86
MUSIC	FPA		59	55	67	62	61	57	66	60	70	67	70	71
			99	105	124	119	121	115	124	113	125	132	153	157
COMMUNICATION	LL		58	63	76	74	85	81	89	90	101	111	129	136
ENGLISH	LL		45	39	55	77	70	75	90	86	98	97	117	120
ENGLISH LA&READING	LL		43	41	25	13	19	18	12	11	11	8	7	8
ENGLISH SOCIAL STUDIES	LL		3		1	1	1	2	2	2	2	2	1	0
SPANISH	LL		40	44	41	44	41	37	39	36	51	55	54	64
			189	187	198	209	216	213	232	225	263	273	308	328
MATHEMATICS	MPHS		101	87	92	91	106	94	89	90	123	120	141	130
PHYSICAL SCIENCE	MPHS		52	46	58	56	63	48	59	33	34	27	22	10
PRE-ENGINEERING	MPHS									20	33	47	117	102
SYSTEMS ENGINEERING	MPHS								5	11	21	28	51	53
			153	133	150	147	169	142	153	154	211	222	331	295
COMPOSITE (BAAS)	SSC		46	37	40	37	35	26	37	42	45	37	41	38
HISTORY	SSC		37	36	56	58	60	65	56	63	65	74	74	73
LATIN AMERICAN STUDIES	SSC		2	1	1	2	2	1	1	1				
POLITICAL SCIENCE	SSC		59	64	82	75	75	69	76	75	84	80	84	81
SOCIAL STUDIES	SSC		17	24	22	24	36	31	32	36	35	42	44	39
URBAN STUDIES	SSC		7	7	6	4	6	7	6	4	2	2	1	1
			168	169	207	200	214	199	208	221	231	235	244	232
UNDECIDED			211	179	423	375	514	497	1001	730	1043	866	1087	906
			211	179	423	375	514	497	1001	730	1043	866	1087	906
SUBTOTAL			1589	1558	1932	1809	2039	1962	2643	2362	2960	2802	3398	3170

ENROLLMENT BY MAJOR - UNDERGRADUATE (cont.)

		F05	SP06	F06	SP07	F07	SP08	F08	SP09	F09	SP10	F10	SP11
BUSINESS													
ACCOUNTING	IBFS	175	177	191	174	185	188	202	189	189	164	178	160
FINANCE	IBFS	55	58	63	55	67	69	69	69	72	64	58	66
ECONOMICS	IBFS	27	16	18	17	23	22	30	32	32	30	28	21
		257	251	272	246	275	279	301	290	293	258	264	247
BUSINESS ADMINISTRATION	IBTS	226	212	252	222	272	241	271	226	262	226	221	211
MANAGEMENT INFO SYSTEMS	IBTS	134	118	128	113	121	126	120	102	94	77	77	78
MANAGEMENT	IBTS	105	119	110	98	109	105	120	104	134	119	135	118
MARKETING	IBTS	61	69	76	62	72	57	69	70	68	58	82	84
		526	518	566	495	574	529	580	502	558	480	515	491
UNDECIDED		33	16	39	31	40	25	23	23	28	27	26	20
		33	16	39	31	40	25	23	23	28	27	26	23
SUBTOTAL		816	785	877	772	889	833	904	815	879	765	805	761
EDUCATION													
BIS BILINGUAL EDUCATION	CI	10	9	11	16	43	31	21	19	56	99	35	27
BIS EARLY CHILDHOOD	CI	108	92	128	122	133	134	118	107	129	109	138	115
BIS EARLY CHILDHOOD-BIL	CI	321	325	348	357	389	401	441	458	435	368	388	383
BIS EARLY CHILDHOOD-RDG	CI	65	91	91	85	70	65	46	36	30	36	29	24
		504	517	578	580	635	631	626	620	650	612	590	549
BIS SPECIAL EDUCATION	PPRO	45	47	56	50	69	72	73	72	70	75	76	79
BS COMM DISORDERS	PPRO						1	67	97	151	181	235	265
		45	47	56	50	69	73	140	169	221	256	311	344
BS FITNESS NON CERTIFICATE	TCHP	22	21	33	30	45	50	50	57	63	62	82	90
BS FITNESS&SPORTS	TCHP	114	126	122	125	132	105	109	101	129	139	149	161
		136	147	155	155	177	155	159	158	192	201	231	251
UNDECIDED		5	1	6	6	19	12	21	9	14	10	18	4
		5	1	6	6	19	12	21	9	14	10	18	5
SUBTOTAL		690	712	795	791	900	871	946	956	1077	1079	1150	1149
SCHOOL OF NURSING													
NURSING	NURS	239	247	276	271	294	291	304	320	397	378	473	448
UNDECIDED								1		2		1	1
SUBTOTAL		239	247	276	271	294	291	305	320	399	378	474	449
TOTAL UNDERGRAD		3334	3302	3880	3643	4122	3957	4798	4453	5315	5024	5827	5529

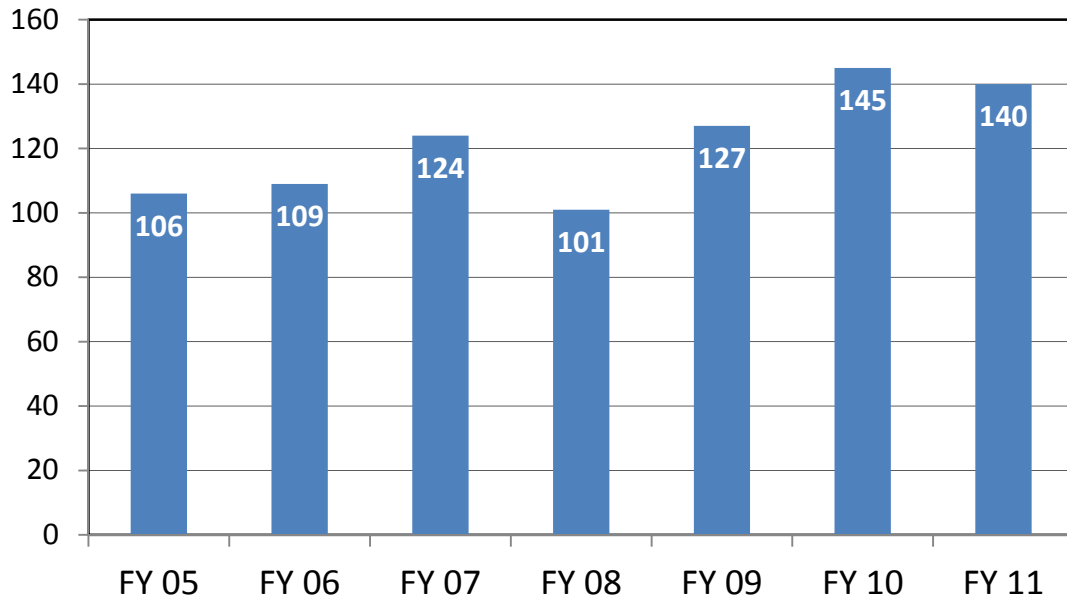
ENROLLMENT BY MAJOR - GRADUATE

		F05	SP06	F06	SP07	F07	SP08	F08	SP09	F09	SP10	F10	SP11
ARTS&HUMANITIES													
COUNSELING PSYCH	BACJ	28	31	34	39	36	30	30	31	37	40	50	49
SOCIOLOGY	BACJ	17	14	14	12	6	9	13	15	18	20	24	18
CRIMINAL JUSTICE	BACJ	33	43	41	30	30	38	27	33	38	37	40	43
PSYCHOLOGY	BACJ			4	7	10	10	3	4	8	10	14	9
		78	88	93	88	82	87	73	83	101	107	128	119
BIOLOGY	BC	9	9	14	16	18	17	13	14	15	23	23	35
		9	9	14	16	18	17	13	14	15	23	23	35
ENGLISH	LL	7	7	10	7	14	17	20	23	32	27	21	21
SPANISH	LL	6	7	11	10	7	4	10	13	20	21	16	17
		13	14	21	17	21	21	30	36	52	48	37	38
MATHEMATICS	MPHS	1	2	4	3	6	8	8	4	11	15	14	14
		1	2	4	3	6	8	8	4	11	15	14	14
HISTORY	SSC	5	7	5	7	8	5	6	13	12	7	11	11
INTERDISCIPLINARY STUDIES	SSC			3	2	8	9	3	3	1			
POLITICAL SCIENCE	SSC	10	8	6	6	3	5	2	6	7	7	7	11
PUBLIC ADMINISTRATION	SSC	45	47	50	53	60	52	50	52	43	39	38	28
		60	62	64	68	79	71	61	74	63	53	56	50
UNDECIDED		17	33	37	40	21	38	24	21	17	11	18	9
		17	35	37	40	21	38	24	21	17	11	18	9
SUBTOTAL		178	210	233	232	227	242	209	232	259	257	276	265
BUSINESS													
ACCOUNTING	IBFS			7	4	8	7	10	14	16	16	15	19
FINANCE	IBFS	6	7	3	3	9	5	11	14	11	9	12	15
INTERNATIONAL BANKING	IBFS	14	11	6	6	4	5	5	6	4	5	5	5
INTERNATIONAL TRADE	IBFS	13	10	7	8	13	15	12	15	10	9	14	14
PROF ACCOUNTANCY	IBFS	25	31	22	23	25	33	31	34	42	49	39	40
		58	59	45	44	59	65	69	83	83	88	85	93
BUSINESS ADMIN	IBTS	53	33	23	13	10	8	11	25	23	7	5	2
INFORMATION SYSTEMS	IBTS	44	49	58	66	74	61	73	61	75	47	48	39
INTERNATIONAL BUSINESS	IBTS	44	51	78	90	90	90	88	99	93	108	84	78
INTERNATIONAL BUS ADMIN	IBTS	13	13	16	15	15	15	20	21	25	21	18	19
INTERNATIONAL LOGISTICS	IBTS							2	2	3	5	3	4
MANAGEMENT	IBTS	24	28	20	24	23	31	30	48	60	67	65	62
MARKETING	IBTS			4	6	3	2	4	5	8	12	11	8
		178	174	199	214	215	207	228	261	287	267	234	212
UNDECIDED		33	30	36	32	63	51	62	23	14	3	3	3
		33	30	36	32	63	51	62	23	14	3	3	3
SUBTOTAL		269	263	280	290	337	323	359	367	384	358	322	308

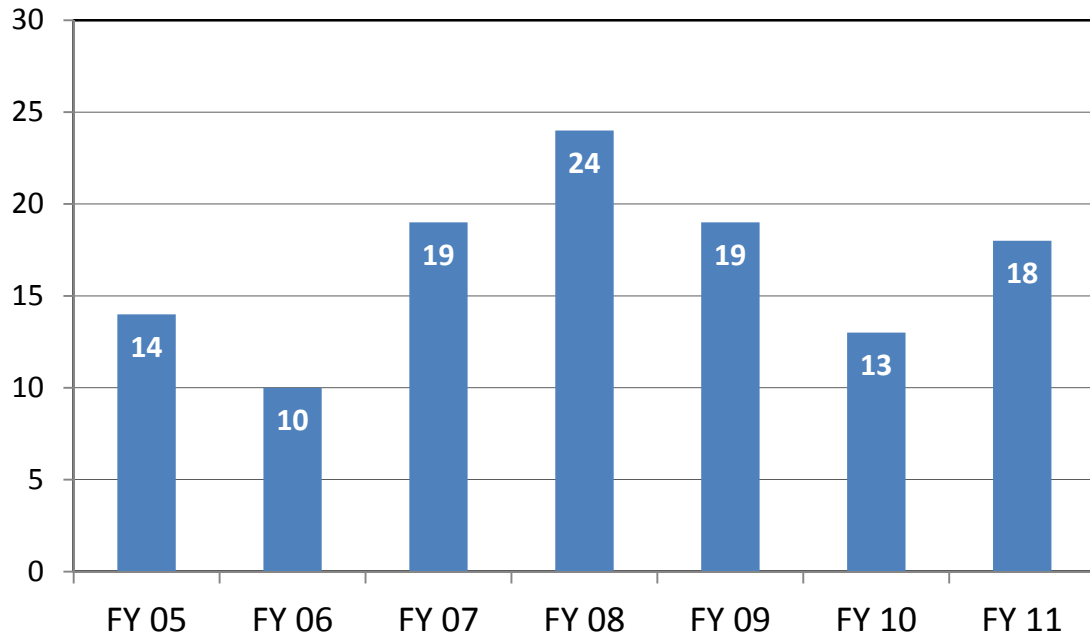
ENROLLMENT BY MAJOR - GRADUATE (cont.)

EDUCATION		F05	SP06	F06	SP07	F07	SP08	F08	SP09	F09	SP10	F10	SP11
CURRICULUM&INSTRUCTION	CI	22	29	37	36	55	49	48	57	43	45	42	34
BILINGUAL EDUCATION	CI	26	30	26	27	21	22	19	15	16	23	25	21
EARLY CHILDHOOD ED	CI	10	9	7	7	6	5	2	3	5	3	4	3
READING	CI	20	25	33	37	27	28	24	20	18	15	8	11
		78	93	103	107	109	104	93	95	82	86	79	69
GENERIC SPECIAL ED	PPRO	52	58	41	54	42	41	34	34	45	46	42	46
SCHOOL COUNSELING	PPRO	62	68	56	51	51	50	64	64	65	68	60	61
ADMIN-MIDMANAGEMT	PPRO	126	141	97	125	142	139	137	125	101	95	83	88
SUPERINTENDENCY	PPRO	8	12								4	7	6
CERTIFICATION	PPRO	145	131	127	114	90	98	71	95	118	120	111	144
		393	410	321	344	325	328	306	318	329	333	303	345
SPECIAL NON-DEGREE		20	75	71	59	49	56	65	62	20	22	27	19
		20	75	71	59	49	56	65	62	20	22	27	19
SUBTOTAL		491	578	495	510	483	488	464	475	431	441	409	433
SCHOOL OF NURSING		F05	SP06	F06	SP07	F07	SP08	F08	SP09	F09	SP10	F10	SP11
NURSING	NURS	26	26	24	7	20	14	30	31	30	12	26	14
NON-DEGREE/UNDECIDED													
SUBTOTAL		26	26	24	7	20	14	30	31	30	12	26	14
TOTAL GRADS		964	1077	1032	1039	1067	1067	1062	1105	1104	1068	1033	1020
UNDERGRADUATES		3334	3302	3880	3643	4122	3957	4798	4453	5315	5024	5827	5529
GRADUATES		964	1077	1032	1039	1067	1067	1062	1105	1104	1068	1033	1020
TOTAL		4298	4379	4912	4682	5189	5024	5860	5558	6419	6092	6860	6549

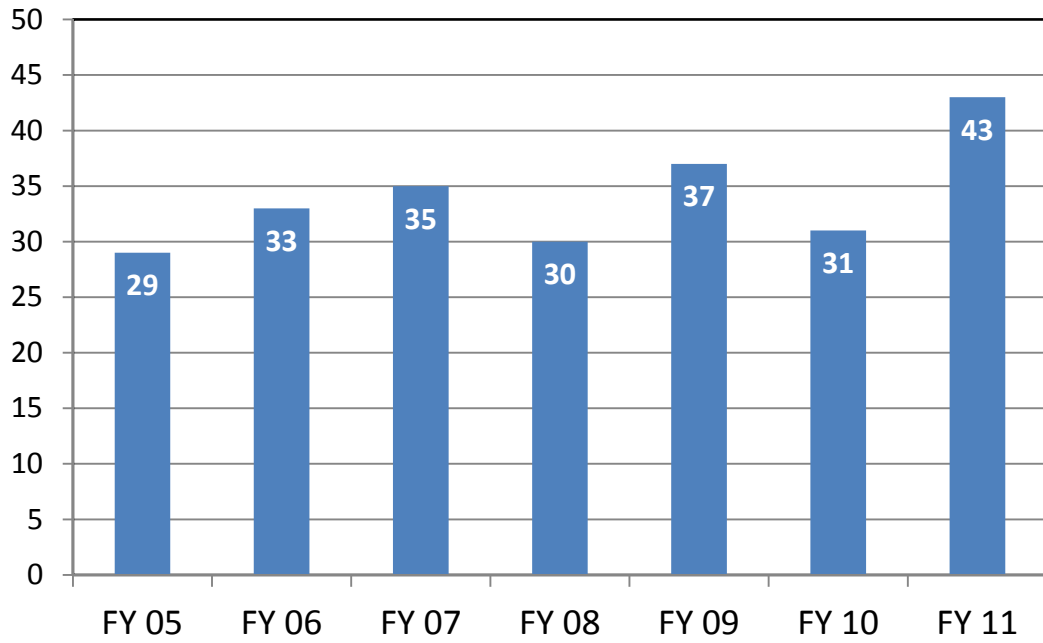
Bachelor Degrees for BS



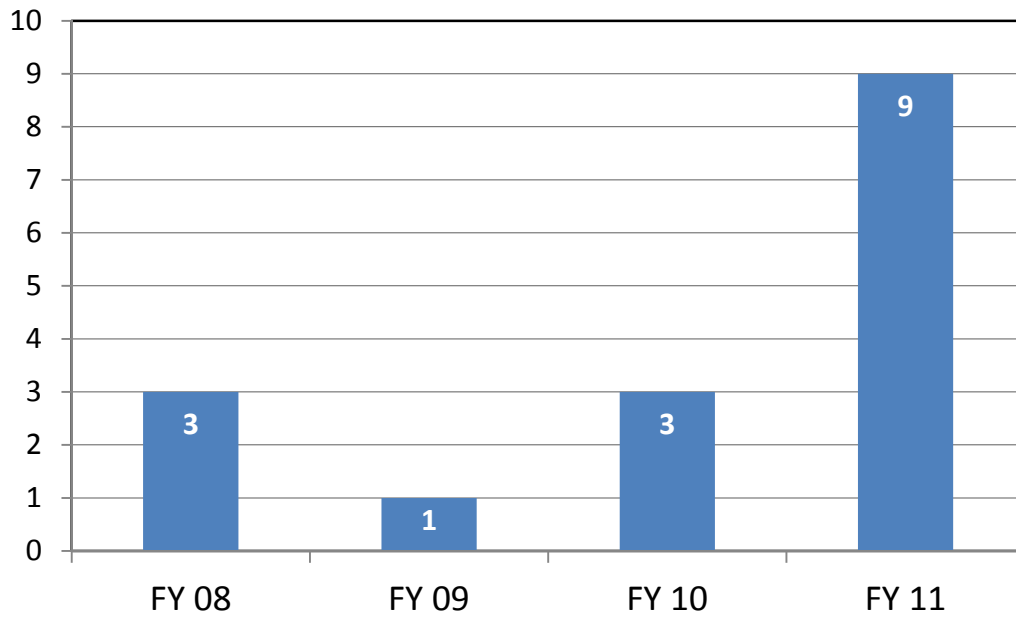
Master's Degrees for BS



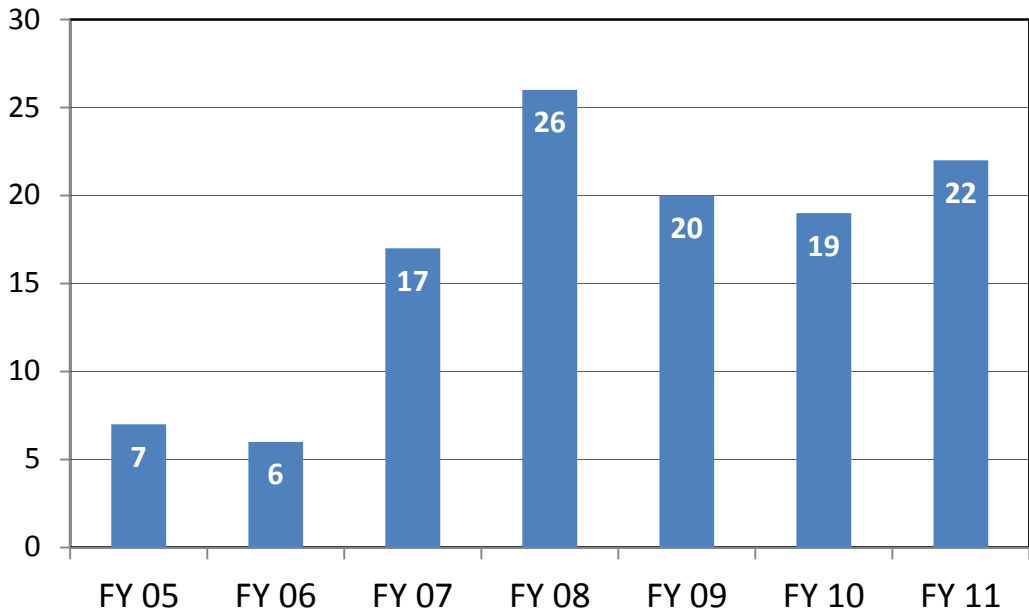
Bachelor Degrees for BC



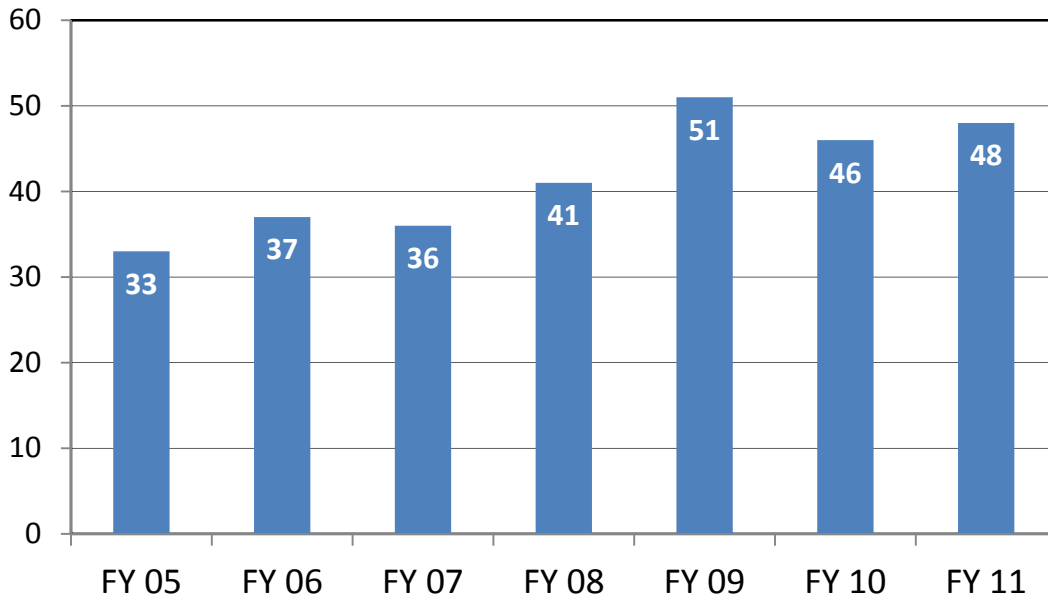
Master's Degrees for BC



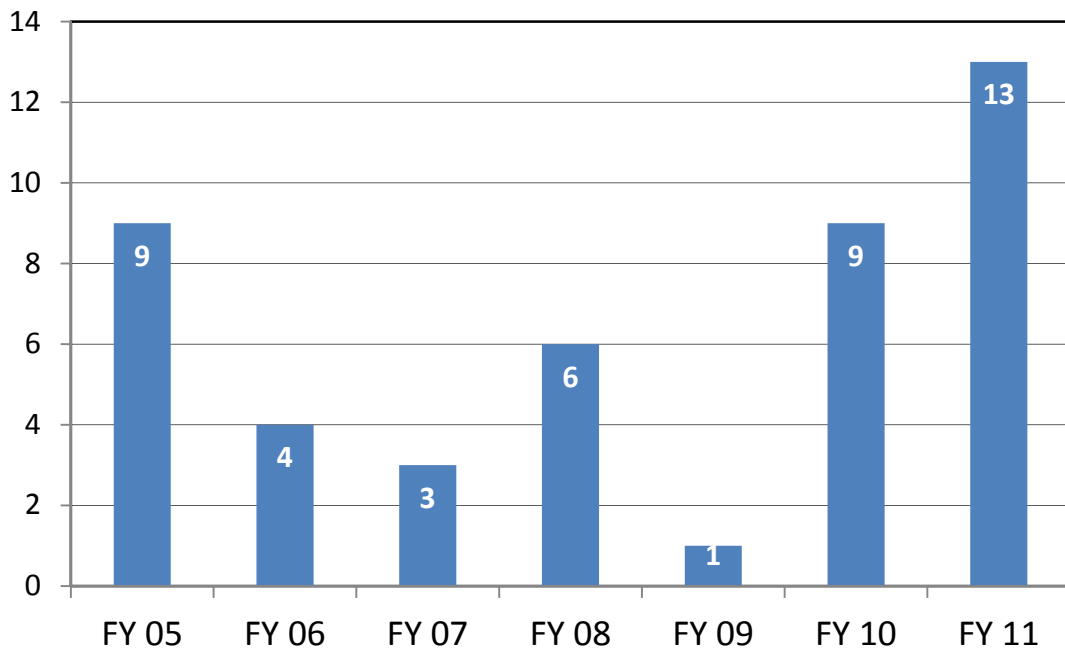
Bachelor Degrees for FPA



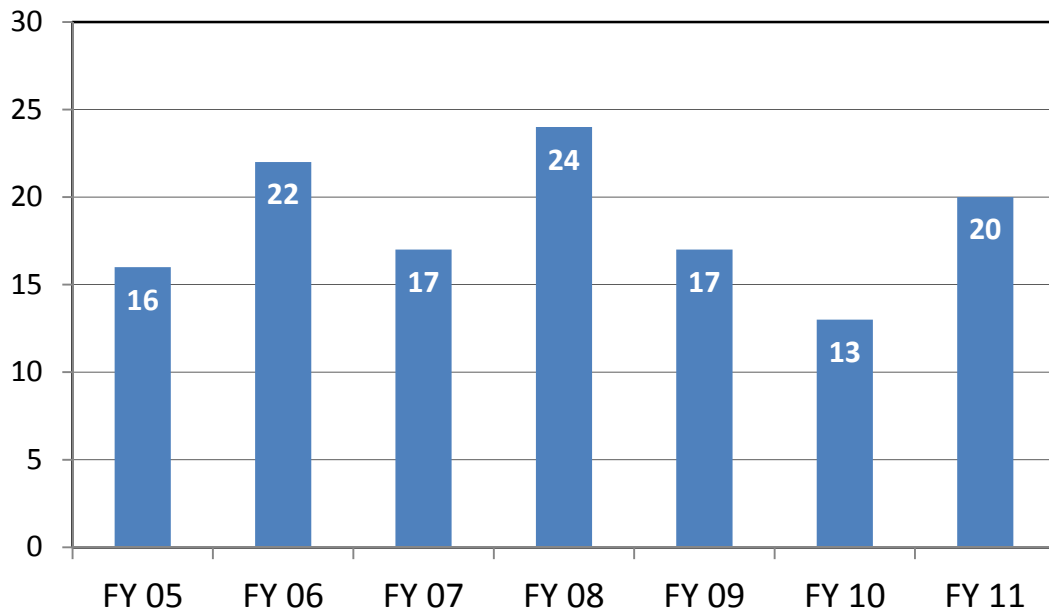
Bachelor Degrees for LL



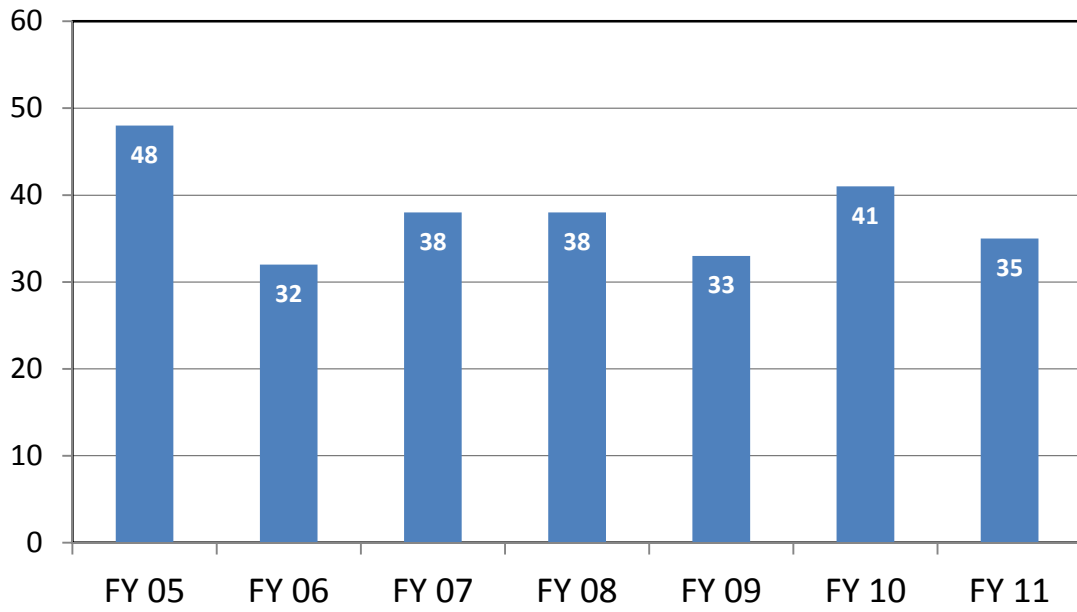
Master's Degrees for LL



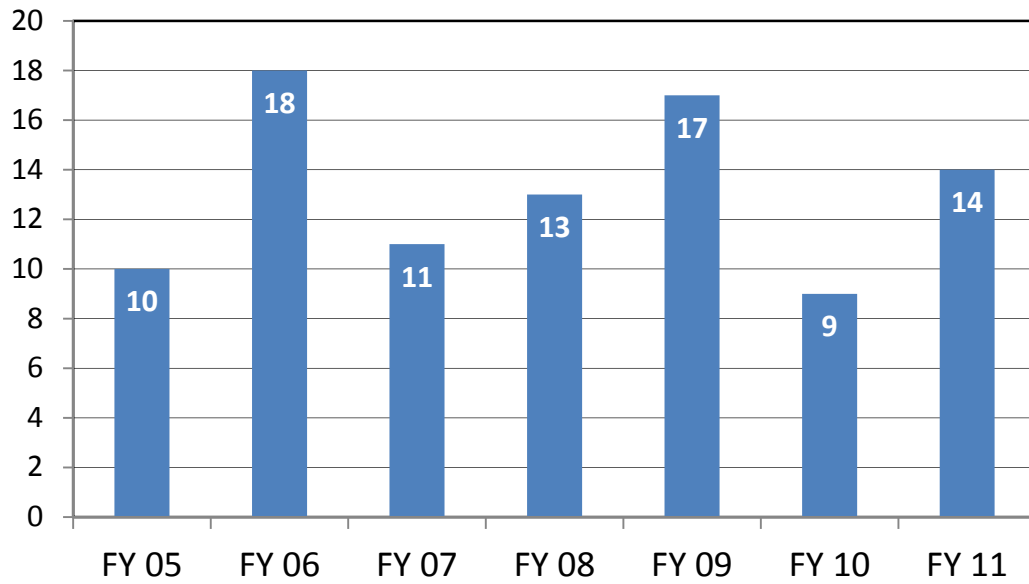
Bachelor Degrees for EMAP



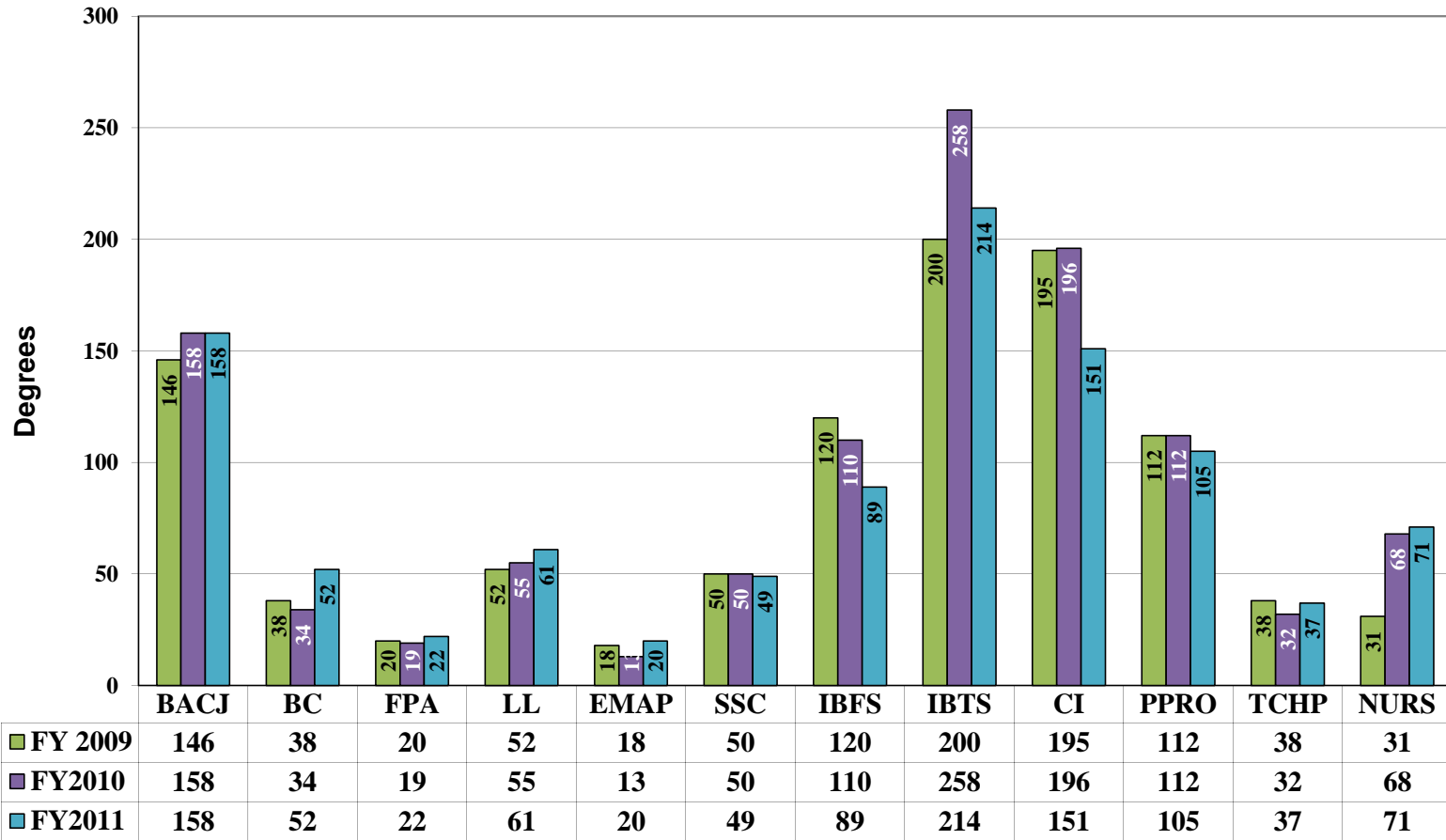
Bachelor Degrees for SSC



Master's Degrees for SSC



Total Degrees Awarded FY 2009-FY 2011



TEXAS A&M INTERNATIONAL UNIVERSITY GRADUATES BY DEPARTMENT BY COLLEGE BY LEVEL
Undergraduate Degrees

CIP	UNDERGRAD DEGREES	Dept	DEC 2006	MAY 2007	AUG 2007	AY TTL	DEC 2007	MAY 2008	AUG 2008	AY TTL	DEC 2008	MAY 2009	AUG 2009	AY TTL	DEC 2009	MAY 2010	AUG 2010	AY TTL	DEC 2010	MAY 2011	AUG 2011	AY TTL
42010100	BA PSYCHOLOGY	BS	23	24	5	52	15	17	3	35	18	21	9	48	28	27	6	61	27	31	7	65
45110100	BA SOCIOLOGY	BS	2	3		5	4	3		7	3	4	1	8	6	1	1	8	4	4	1	9
43010700	BS CRIMINAL JUSTICE	BS	22	27	6	55	20	20	10	50	26	30	7	63	16	43	7	66	35	26	5	66
44070100	BS SOCIAL WORK	BS	1	11		12	1	8		9	1	7		8	1	9		10				0
Total Dept: BS			48	65	11	124	40	48	13	101	48	62	17	127	51	80	14	145	66	61	13	140
26010100	BA BIOLOGY	BC	2	4		6	4	3	1	8	1	4		5		1	1	2		5		5
26010100	BS BIOLOGY	BC	8	15		23	7	14		21	4	15	5	24	6	20	2	28	1	27	6	34
40050100	BS CHEMISTRY	BC			2	2						1		1	1			1	1			1
03010400	BS ENV SCIENCE	BC											3	3				0		1	1	2
30999901	BS SCIENCE	BC	3	1		4				2	1			3				0		1		1
30999901	BSIS SCIENCE	BC					1			1				1				0				0
Total Dept: BC			13	20	2	35	11	18	1	30	7	21	9	37	7	21	3	31	2	34	7	43
50070200	BA ART	FPA	5	6		11	6	4	2	12	5	6		11	4	4		8	6	8	1	15
50090100	BA MUSIC	FPA					1			1	1			1		1		1			2	2
50090100	BM MUSIC	FPA	2	1	3	6	3	9	1	13	3	5		8	6	4		10		4	1	5
Total Dept: FPA			7	7	3	17	10	13	3	26	9	11		20	10	9		19	6	12	4	22
09010100	BA COMMUNICATION	LL	3	5		8	4	8	1	13	3	15		18	7	6	1	14	5	15	1	21
23010100	BA ENGLISH	LL	4	12	1	17	7	6	1	14	9	8	1	18	10	8	3	21	6	11	1	18
23010100	BA ENG,L ARTS,RDG	LL		1		1	1			1	3	2	1	6			1	1	2			2
23010100	BSIS ENGL,L ARTS,SST	LL			1	1																
30999901	BSIS ENGL,L ARTS,RDG	LL						2	1	3												
16090500	BA SPANISH	LL	1	6	2	9	4	4	2	10	4	4	1	9	1	6	3	10	1	5	1	7
Total Dept: LL			8	24	4	36	16	20	5	41	19	29	3	51	18	20	8	46	14	31	3	48
27010100	BA MATHEMATICS	EMAP	3	6	1	10	4	9	1	14	4	6	1	11	7	1	1	9	4	5		9
40010100	BA PHYS SCIENCE	EMAP					1			1												
27010100	BS MATHEMATICS	EMAP	3	3		6	3	1		4		1		1		1		1		1		1
30999901	BSIS MATHEMATICS	EMAP			1	1		4	1	5	3	2		5		3		3	6	3		9
14270100	BS SYSTEMS ENGR																					
Total Dept: EMAP			6	9	2	17	8	14	2	24	7	9	1	17	7	5	1	13	10	9	0	19
54010100	BA HISTORY	SSC	1	4	1	6	4	6	3	13	3	7		10	3	7	3	13	6	2	1	9
05010700	BA L AM STUDIES	SSC											1	1				0				0
45120100	BA PLANG&ADMIN	SSC	2			2		1		1					1					1		1
45100100	BA POLITICAL SCIENCE	SSC	12	4	3	19	8	3	3	14	4	7	1	12	5	8	3	16	5	9	1	15
45010100	BA SOCIAL STUDIES	SSC																				
30999940	BAAS APPLIED ARTS&SCI	SSC	5	3	1	9	4	1		5	2	4		6		3	2	5	5	3	1	9
45010100	BS SOCIAL STUDIES	SSC										1		1	2	3		5		1		1
30999901	BSIS SOCIAL STUDIES	SSC	1	1		2	2	2	1	5	2	1		3		1		1				0
Total Dept: SSC			21	12	5	38	18	13	7	38	11	20	2	33	10	23	8	41	16	16	3	35
TOTALS COAS			103	137	27	267	103	126	31	260	101	152	32	285	103	158	34	295	114	163	30	307

Undergraduate Degrees(cont.)

CIP	UNDERGRAD DEGREES	Dept	DEC 2006	MAY 2007	AUG 2007	AY TTL	DEC 2007	MAY 2008	AUG 2008	AY TTL	DEC 2008	MAY 2009	AUG 2009	AY TTL	DEC 2009	MAY 2010	AUG 2010	AY TTL	DEC 2010	MAY 2011	AUG 2011	AY TTL
52030100	BBA ACCOUNTING	IBFS	16	23	2	41	11	23	8	42	19	27	4	50	26	21	3	50	24	16	2	42
52080100	BBA FINANCE	IBFS	9	5	3	17	8	8	5	21	15	8	4	27	14	13		27	9	7		16
52060100	BBA INTL ECONOMICS	IBFS	1	1		2	1	1	1	3	1	5		6	4	2		6	3	1		4
Total Dept: IBFS			26	29	5	60	20	32	14	66	35	40	8	83	44	36	3	83	36	24	2	62
52020100	BBA BUSINESS ADMIN	IBTS	16	11	5	32	10	12	6	28	9	10	6	25	18	12	9	39	3	18		21
52120100	BBA MGT INFO SYS	IBTS	8	13	3	24	10	11		21	12	12	2	26	16	6	1	23	8	11	1	20
52020100	BBA MANAGEMENT	IBTS	25	20	1	46	20	14	2	36	21	17	7	45	23	17		40	29	12	3	44
52020100	BBA MARKETING	IBTS	12	11	1	24	13	5	3	21	6	6	1	13	16	5		21	5	14	2	21
Total Dept: IBTS			61	55	10	126	53	42	11	106	48	45	16	109	73	40	10	123	45	55	6	106
TOTALS COBA			87	84	15	186	73	74	25	172	83	85	24	192	117	76	13	206	81	79	8	168
30999901	BSIS BILINGUAL GEN	CI	1			1	3	1		4		1	1	2	2	2		4	1	1		2
30999901	BSIS EARLY CHILDHOOD	CI	16	68	6	90	12	25	27	64	9	12	4	25	9	4	6	19	5	10	1	16
30999901	BSIS ECE BILINGUAL	CI	47		13	60	30	44		74	42	52	12	106	45	82	10	137	50	49	6	105
30999901	BSIS ECE READING	CI	7		4	11	16			16	12	7	6	25	6	6	2	14	2	6		8
Total Dept: CI			71	68	23	162	61	70	27	158	63	72	23	158	62	94	18	174	58	66	7	131
51020100	BS COMM SCIENCES	PPRO							1	1	1	6		7	8	13	2	23	17	27	6	50
30999901	BS SPECIAL EDUCATION	PPRO	2	4	2	8	11	8	1	20	3	6	2	11	9	7	1	17	4	10		14
Total Dept: PPRO			2	4	2	8	11	8	2	21	4	12	2	18	17	20	3	40	21	37	6	64
31010110	BS FITNESS&SPORTS	TCHP	10	16	4	30	12	20	5	37	18	14	6	38	16	10	6	32	9	24	4	37
30999901	BIS INTERDIS STUDIES																					
Total Dept: TCHP			10	16	4	30	12	20	5	37	18	14	6	38	16	10	6	32	9	24	4	37
TOTALS COED			83	88	29	200	84	98	34	216	85	98	31	214	95	124	27	246	88	127	17	232
51160100	BS NURSING	NURS	3	32	8	43	1	46	10	57	2	17	12	31	2	43	6	51		45	14	59
TOTALS CNHS			3	32	8	43	1	46	10	57	2	17	12	31	2	43	6	51	0	45	14	59
SUBTOTALS			276	341	79		261	344	100		271	352	99		317	401	80		283	414	69	
ANNUAL BACCALAUREATE SUBTOTALS						696				705				722				798				766
PERCENT 1st GENERATION						66				49				63				52				50

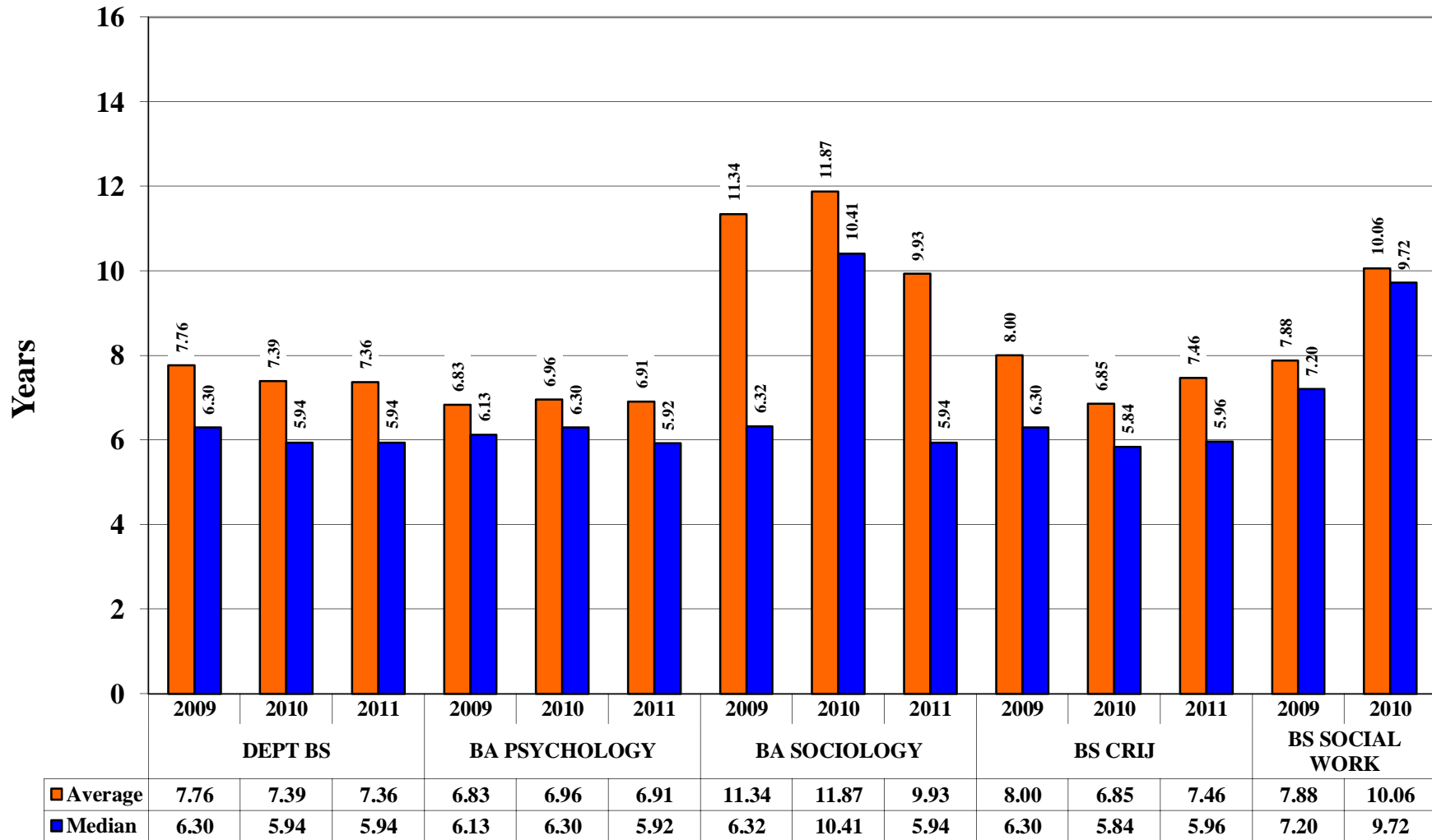
Graduate Degrees

CIP	GRADUATE DEGREES	Dept	DEC 2006	MAY 2007	AUG 2007	AY TTL	DEC 2007	MAY 2008	AUG 2008	AY TTL	DEC 2008	MAY 2009	AUG 2009	AY TTL	DEC 2009	MAY 2010	AUG 2010	AY TTL	DEC 2010	MAY 2011	AUG 2011	AY TTL
42060100	MA COUNSELING PSY	BS	1	5	3	9	8	5		13	4	6	1	11	2	2		4		4		4
45110100	MA SOCIOLOGY	BS	2	2	1	5	1	1		2		1		1				0	5	2		7
43010300	MS CRIMINAL JUSTICE	BS	4	1		5	3	5	1	9	5			5	3	5		8	2	3		5
42010100	MS PSYCHOLOGY	BS			0	0			0	0	1	1		2			1	1	1	1		2
Total Dept: BS			7	8	4	19	12	11	1	24	10	8	1	19	5	7	1	13	8	10	0	18
26010100	MS BIOLOGY	BC						3		3	1			1		3		3	2	4	3	9
Total Dept: BC								3		3	1			1	0	3		3	2	4	3	9
23010100	MA ENGLISH	LL	1			1		1		1	1			1	3	3	1	7	7	2	1	10
16090500	MA SPANISH	LL	1	1		2		5		5			0	0		2	0	2	2	1		3
Total Dept: LL			2	1		3		6		6	1		0	1	3	5	1	9	9	3	1	13
27010100	MS MATHEMATICS	EMAP										1		1				0			1	1
Total Dept: EMAP												1		1		0		0		0	1	1
54010100	MA HISTORY	SSC						1		1	2			2	1			1		1		1
30999901	MA INTERDIS STUDIES	SSC	1			1				1	1	2	1	4				0				0
45100100	MA POLITICAL SCIENCE	SSC	2	2		4		1		1		2		2		1		1		2		2
44040100	MPADM PUBLIC ADMIN	SSC	2	4	0	6	4	7		11	6	3		9	6	1		7	8	4		12
Total Dept: SSC			5	6	0	11	4	9		13	9	7	1	17	7	2	0	9	8	7	0	15
TOTALS COAS			14	15	4	33	16	29	1	46	21	16	2	39	15	17	2	34	27	24	5	56
52020100	MBA ACCOUNTING	IBFS	2			2	3			3	2	2	1	5	1			1	2		2	4
52020100	MBA INTNL FINANCE	IBFS					6			6	4	4	1	9	2	2	2	6	3	3		6
52020100	MBA INTNL BANKING	IBFS																				
52020100	MBA INTNL TRADE	IBFS																				
52020100	MBAIBK INTNL BANKING	IBFS	1	1	1	3	1	1	1	3		1	2	3	1	1		2		1		1
52110100	MBAIT INTNL TRADE	IBFS	3		1	4		1	5	6	2	6		8	1			1	1	4	2	7
52030100	MPACC PROF ACCTNCY	IBFS	4	7	1	12	4	8	2	14	5	7		12	2	14	1	17	3	6		9
Total Dept: IBFS			10	8	3	21	14	10	8	32	13	20	4	37	7	17	3	27	9	14	4	27
52020100	MBA BUSINESS ADMIN	IBTS																				
52020100	MBA INFO SYSTEMS	IBTS	1	1		2		1		1		2		2	1		1	2	1	1	1	3
52020100	MBA INTNL BUSINESS	IBTS	6	19	5	30	26	17	12	55	17	15	14	46	26	27	10	63	21	12	14	47
52020100	MBA MANAGEMENT	IBTS	7	7	2	16	7	5	4	16	5	7	4	16	8	9	1	18	7	10	7	24
52020100	MBA MARKETING	IBTS					2			2									1	2		3
52120100	MS INFOR SYSTEMS	IBTS	16	8	19	43	26		25	51	22	5		27	37	8	1	46	20	8	1	29
52020300	MS INTNL LOGISTICS	IBTS																				
Total Dept: IBTS			30	35	26	91	61	23	41	125	44	29	18	91	72	44	13	129	50	33	23	106
TOTALS COBA			40	43	29	112	75	33	49	157	57	49	22	128	79	61	16	156	59	47	27	133

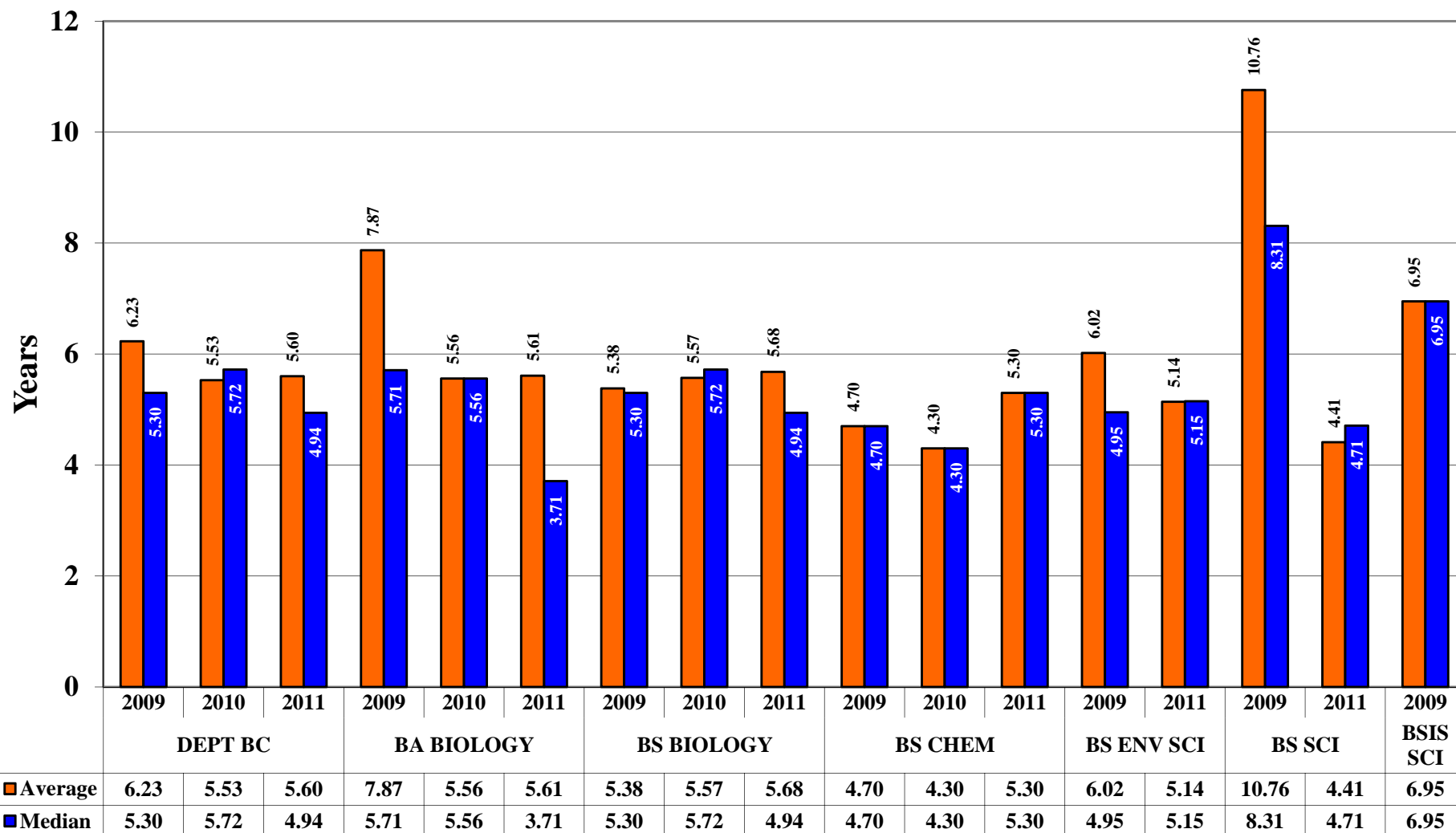
Graduate Degrees(cont.)

CIP	GRADUATE DEGREES	Dept	DEC 2006	MAY 2007	AUG 2007	AY TTL	DEC 2007	MAY 2008	AUG 2008	AY TTL	DEC 2008	MAY 2009	AUG 2009	AY TTL	DEC 2009	MAY 2010	AUG 2010	AY TTL	DEC 2010	MAY 2011	AUG 2011	AY TTL
13030100	MS CURR&INSTR	CI	2	1	3	6	6	5	2	13	6	8	6	20	6	4	5	15	5	7		12
13020100	MSED BILINGUAL ED	CI	4	3	4	11	4	2	2	8	4		1	5		2	2	4	3	4		7
13121000	MSED EARLY CHILD ED	CI	1	1		2	2		1	3	1			1				0				0
13131500	MSED READING	CI	2	7	2	11	4	1	4	9	6	3	2	11	1	2		3	1			1
Total Dept: CI			9	12	9	30	16	8	9	33	17	11	9	37	7	8	7	22	9	11	0	20
13100100	MS SPEC EDUCATION	PPRO	3	8	3	14	4	7	4	15	7	4	2	13	1	3	1	5		8		8
13110100	MS SCHL COUNSELING	PPRO	3	8	12	23	8	1	6	15	5	7	2	14	6	13	2	21	5	6	1	12
13040100	MSED ED ADMIN	PPRO	14	17	18	49	10	7	27	44	19	23	25	67	11	20	15	46	6	9	6	21
Total Dept: PPRO			20	33	33	86	22	15	37	74	31	34	29	94	18	36	18	72	11	23	7	41
TOTALS COED			29	45	42	116	38	23	46	107	48	45	38	131	25	44	25	94	20	34	7	61
51160500	MS NURSING	NUR	14		0	14	7			7				0	17			17	12			12
TOTALS CNHS			14			14	7			7	0			0	17			17	12	0		12
SUBTOTALS			97	103	75		136	85	96		126	110	62		136	122	43		118	105	39	
ANNUAL MASTERS SUBTOTALS					275				317				298				301				262	
Doctoral Degrees																						
52110100	PhD INTNL BUSINESS	IBTS		1		1			0	0			0	0	2	4		6		2		2
ANNUAL DOCTORAL SUBTOTALS				1		1			0	0			0	0	2	4		6	0	2		2
TOTALS			373	445	154		397	429	196		397	462	161		455	527	123		401	521	108	
ANNUAL TOTALS					972				1022				1020				1105				1030	

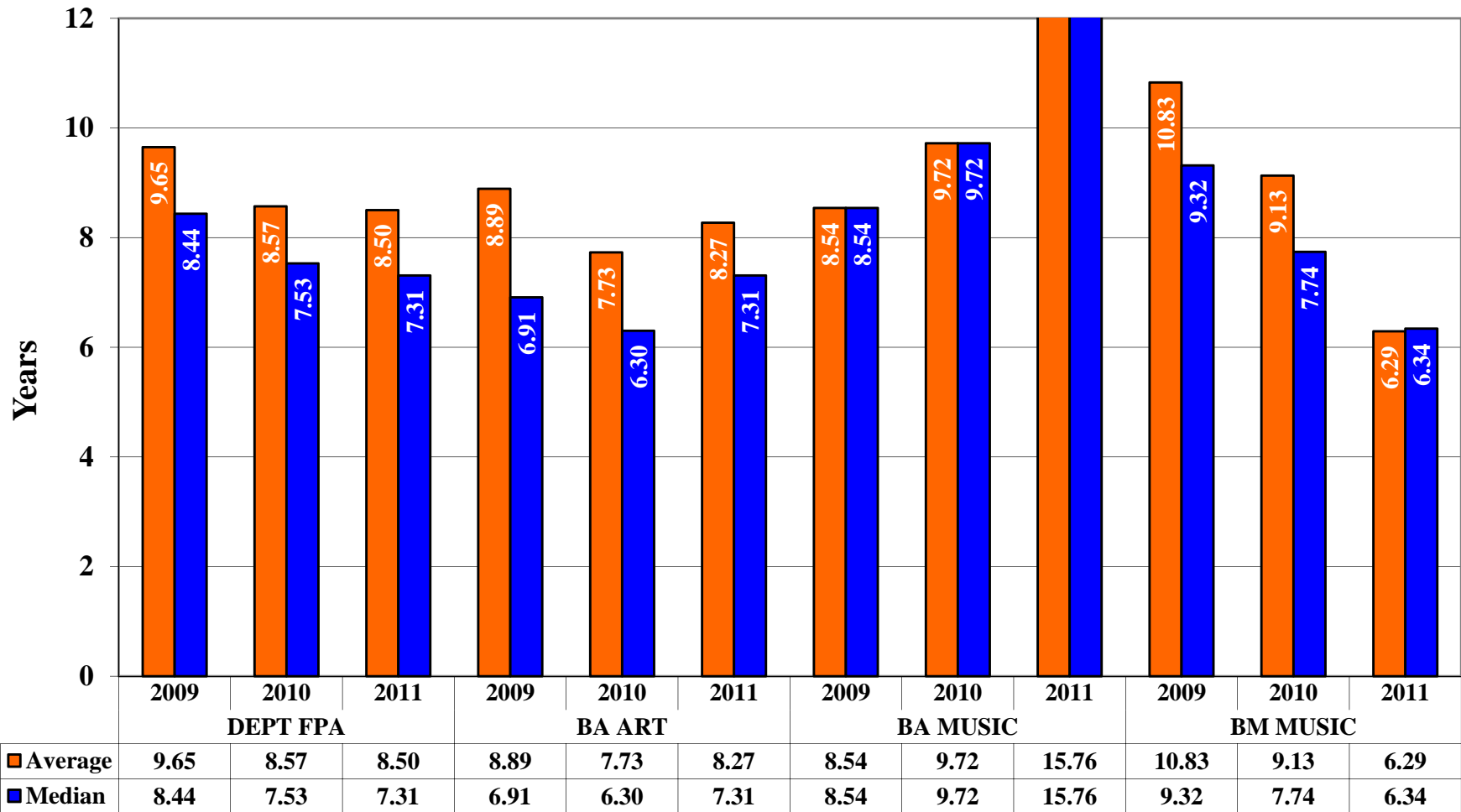
Average and Median Time to Undergraduate Degree Dept: BS



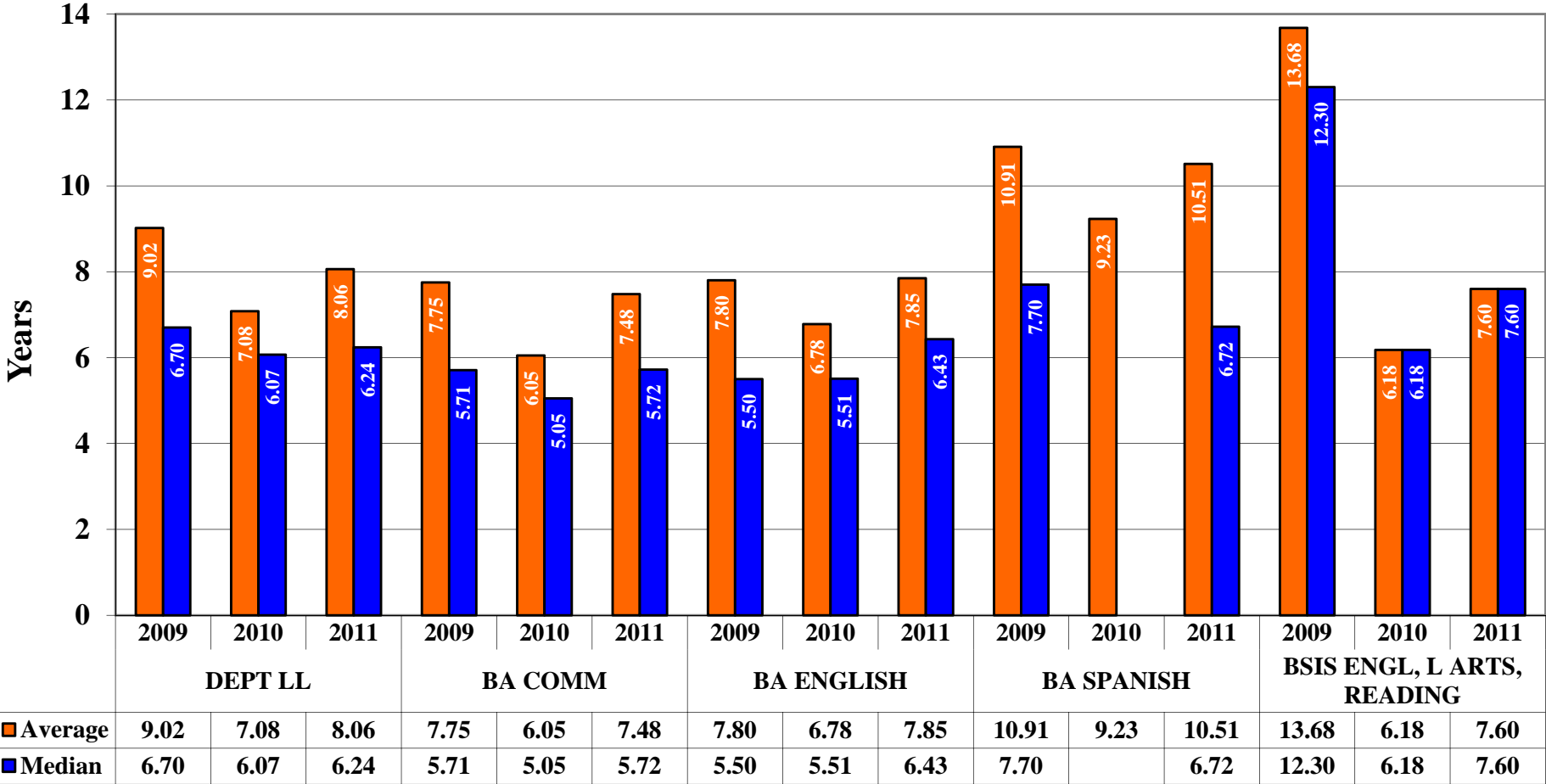
Average and Median Time to Undergraduate Degree Dept: BC



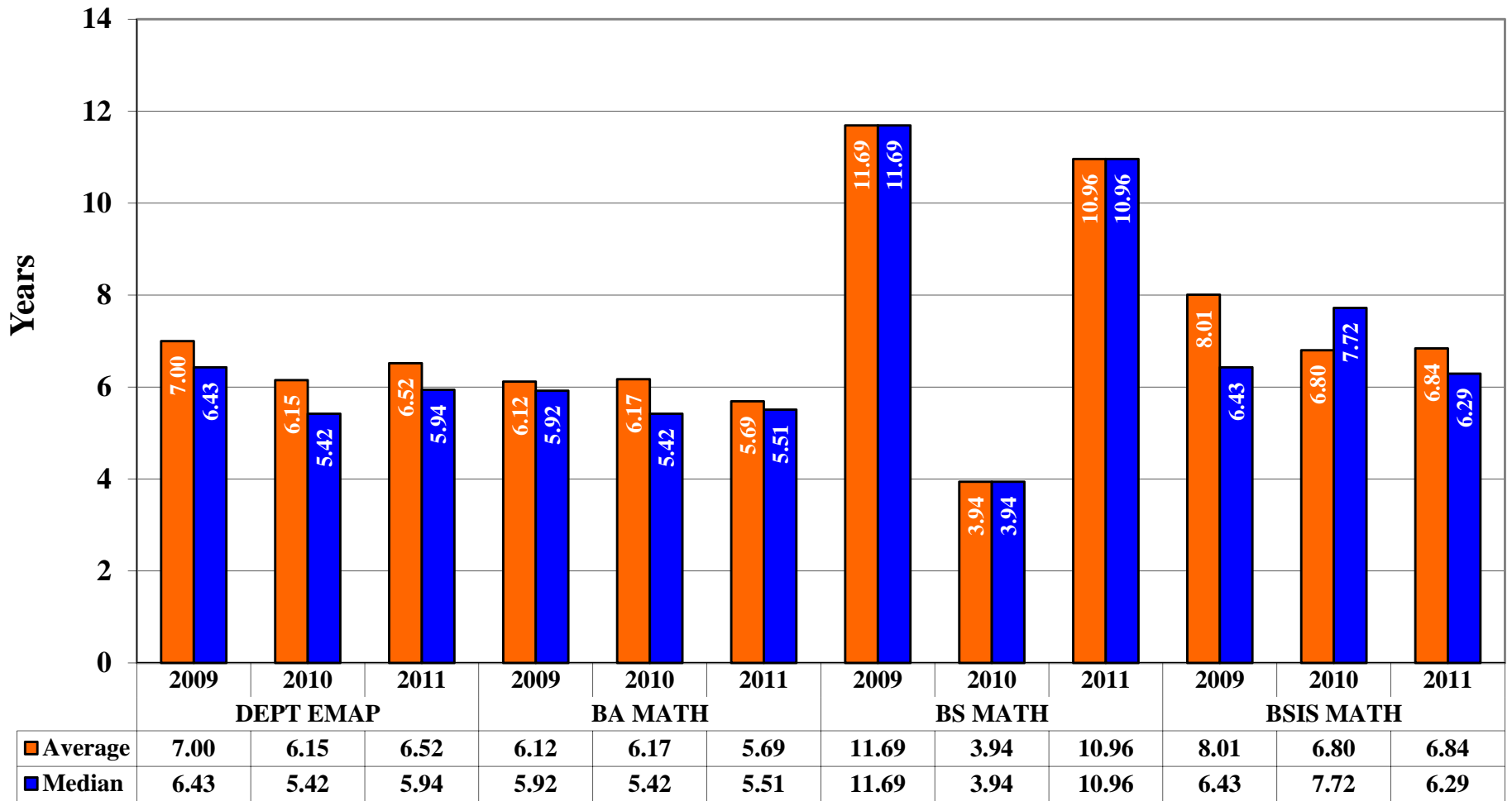
Average and Median Time to Undergraduate Degree Dept: FPA



**Average and Median Time to Undergraduate Degree
Dept: LL**



Average and Median Time to Undergraduate Degree Dept: EMAP



Average and Median Time to Undergraduate Degree Dept: SSC

