

A Region of Influence

Texas A&M International University
Office of Global Initiatives

Binational Consortium
Texas/Mexico Border





Centers of Influence-300 miles





Regional Value

- Total U.S. Int'l Trade: **\$3.97 Trillion**
- Regional Ports: **\$533.32 Billion**
- 13% comes through this region
 - Port data: **\$280.03 billion - Laredo**
\$253.29 billion – Houston
- **Laredo's trade increased 10.61% through Dec 2014**

USA Ports

Laredo 2013: top 20 U.S. customs districts

All numbers are in billions

U.S. TOTAL TRADE		
Total Trade	\$3.85 trillion	0.65%
Exports	\$1.58 trillion	2.14%
Imports	\$2.27 trillion	-0.97%
Deficit	\$(689.00) billion	

17 LOW VALUE SHIPMENTS		
Total Trade	\$68.28	4.59%
Exports	\$4.83	4.96%
Imports	\$13.44	3.52%
Surplus	\$41.39	

14 BUFFALO		
Total Trade	\$86.63	-3.85%
Exports	\$44.19	-7.62%
Imports	\$42.44	0.40%
Surplus	\$1.75	

2 NEW YORK CITY		
Total Trade	\$378.95	-0.77%
Exports	\$155.12	-2.05%
Imports	\$223.83	0.13%
Deficit	\$(68.71)	

19 NORFOLK		
Total Trade	\$59.13	4.68%
Exports	\$79.79	7.61%
Imports	\$29.34	1.87%
Surplus	\$0.45	

18 CHARLESTON		
Total Trade	\$66.01	2.36%
Exports	\$25.75	3.91%
Imports	\$40.25	1.40%
Deficit	\$(14.50)	

12 MIAMI		
Total Trade	\$120.49	-3.20%
Exports	\$67.93	-7.17%
Imports	\$52.56	2.21%
Surplus	\$15.37	

15 PHILADELPHIA		
Total Trade	\$76.52	-2.05%
Exports	\$17.61	4.52%
Imports	\$58.90	-3.83%
Deficit	\$(41.29)	

5 DETROIT		
Total Trade	\$243.83	-3.62%
Exports	\$121.47	-5.49%
Imports	\$122.36	-1.89%
Deficit	\$(0.90)	

11 CLEVELAND		
Total Trade	\$122.46	3.83%
Exports	\$33.06	4.73%
Imports	\$89.39	3.49%
Deficit	\$(56.33)	

7 CHICAGO		
Total Trade	\$192.53	2.70%
Exports	\$40.09	5.49%
Imports	\$152.44	2.09%
Deficit	\$(112.35)	

10 SAN FRANCISCO		
Total Trade	\$123.90	3.89%
Exports	\$54.23	7.28%
Imports	\$69.68	1.39%
Deficit	\$(15.45)	

1 LOS ANGELES		
Total Trade	\$414.80	2.65%
Exports	\$126.96	4.70%
Imports	\$287.84	1.81%
Deficit	\$(160.88)	

16 DALLAS/FORT WORTH		
Total Trade	\$72.32	6.03%
Exports	\$18.79	-2.48%
Imports	\$53.52	9.38%
Deficit	\$(34.73)	

9 ATLANTA/SAVANNAH		
Total Trade	\$129.54	-2.13%
Exports	\$47.65	-7.92%
Imports	\$81.88	1.59%
Deficit	\$(34.23)	

6 NEW ORLEANS		
Total Trade	\$234.00	-3.76%
Exports	\$93.99	1.09%
Imports	\$140.02	-6.75%
Deficit	\$(46.03)	

13 EL PASO		
Total Trade	\$91.37	1.18%
Exports	\$39.70	3.06%
Imports	\$51.67	-0.65%
Deficit	\$(11.97)	

20 SAN DIEGO		
Total Trade	\$58.91	4.26%
Exports	\$20.63	3.69%
Imports	\$38.28	4.58%
Deficit	\$(17.65)	

3 LAREDO		
Total Trade	\$253.15	5.87%
Exports	\$112.42	6.89%
Imports	\$140.74	5.14%
Deficit	\$(28.32)	

4 HOUSTON		
Total Trade	\$251.98	-8.02%
Exports	\$129.09	1.79%
Imports	\$122.89	-16.49%
Surplus	\$6.20	

- 2013 Ranking**
- Los Angeles
 - New York City
 - Laredo
 - Houston
 - Detroit
 - New Orleans
 - Chicago
 - Seattle
 - Atlanta/Savannah
 - San Francisco
 - Cleveland
 - Miami
 - El Paso
 - Buffalo
 - Philadelphia
 - Dallas
 - Low Value Shipments
 - Charleston
 - Norfolk
 - San Diego

Source: WorldCity analysis of U.S. Census Bureau data



Shift from Maritime—Why?

Outstanding Model of Experience & Reputation

- Port deliveries - timely, efficient, and on demand
- Example: HEB

Trans Pacific Partnership

- Chaos in California - 2 Billion lost daily
- Bring manufacturing to our region



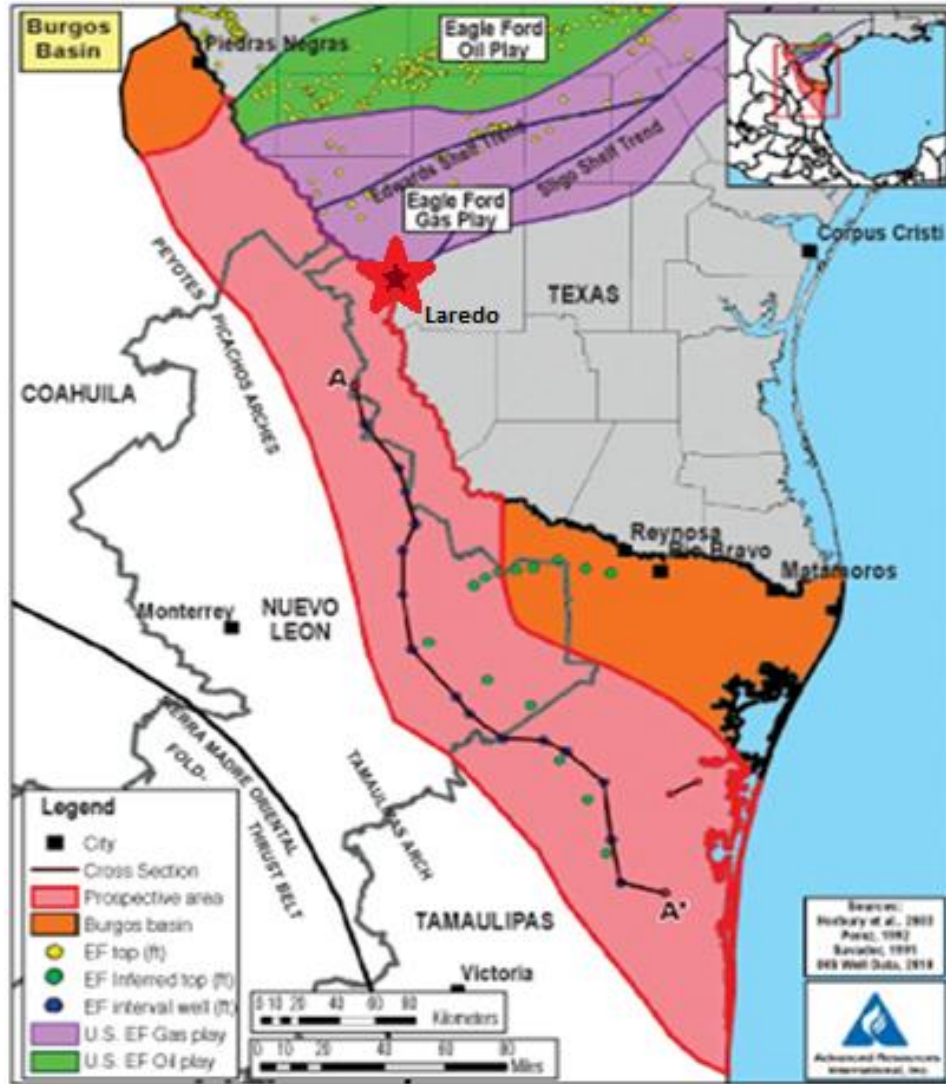
Industrial Development

PRO

- Regional Access to Abundant & Inexpensive Energy
- Experienced logistic managers
- Vast expanse of underdeveloped urban areas available



Where can Industrialization happen?





Infrastructure

Readiness-

We have and need to expand

- Highways - best quality
- Bridges - we need more
- Seaports & Inland ports - expand capacity

http://www.wilsoncenter.org/sites/default/files/Border_Economy_Transition_Wilson_Lee.pdf



What is our next step?

Agenda Conjunta

– A Binational Collaboration For a Successful Region



THANK YOU

For more information please contact:

**Maria Eugenia Calderon-Porter,
Asst. Vice President, Texas A&M International University
Office of Global Initiatives/Binational Center
Laredo, Texas
Telephone: 956-326-2834
Email: Mcalderon@tamiu.edu**

www.tamiu.edu/binationalcenter