



# Tamaulipas and Texas Border Economic Development

*A presentation for the  
Binational Consortium*



**DISCOVER THE INTERNATIONAL YOU!**



THE INTERNATIONAL

TEXAS A&M  
INTERNATIONAL  
UNIVERSITY



BINATIONAL  
CENTER

RESEARCH  
EDUCATION  
LEADERSHIP  
PUBLIC SERVICE



TEXAS  
CENTER

Border Economic and Enterprise Development

#	AGENDA
1	Welcome. Opening remarks
2	Introduction and Objectives
3	Tamaulipas Energy Agenda Presentation
4	Bi-national Consortium Presentation
5	Phases of the Project
6	Brainstorming
7	Conclussions
8	Our Next Meeting

# Who are we?

We are at the center of influence of a Binational, Bicultural and Bilingual region.

We are the leaders in international trade in the Western Hemisphere.

We have accessible energy generation and processing capacity and potential in two countries.

We are a natural laboratory for economic development for two countries.



Source:  
Binational Center:  
Eagle Ford –Cuenca  
Burgos Community  
Program. TAMIU.

**DISCOVER THE INTERNATIONAL YOU!**

# Center of Influence



THE INTERNATIONAL

TEXAS A&M  
INTERNATIONAL  
UNIVERSITY

Texas A&M  
International  
University

BINATIONAL  
CENTER

RESEARCH  
EDUCATION  
LEADERSHIP  
PUBLIC SERVICE

TEXAS A&M INTERNATIONAL UNIVERSITY  
TEXAS  
CENTER

Border Economic and Enterprise Development



300 miles

Source:  
Binational Center:  
Eagle Ford –Cuenca  
Burgos Community  
Program. TAMIU.

DISCOVER THE INTERNATIONAL YOU!

# Regional Value/Trade (2013)



THE INTERNATIONAL

TEXAS A&M  
INTERNATIONAL  
UNIVERSITY

- Total U.S. Int'l Trade: \$ **3.97 Trillion**
- Regional Ports: **\$533.32 Billion**
- 13% comes through this region



**Port Data:**

**Population (2010)**

**\$280.03 billion – Laredo**

( 236,086)

**\$253.29 billion – Houston**

(2,096,798)

- **Laredo's trade increased 10.61%  
from 2013 to 2014 – we went from #3 to #2**

Source:

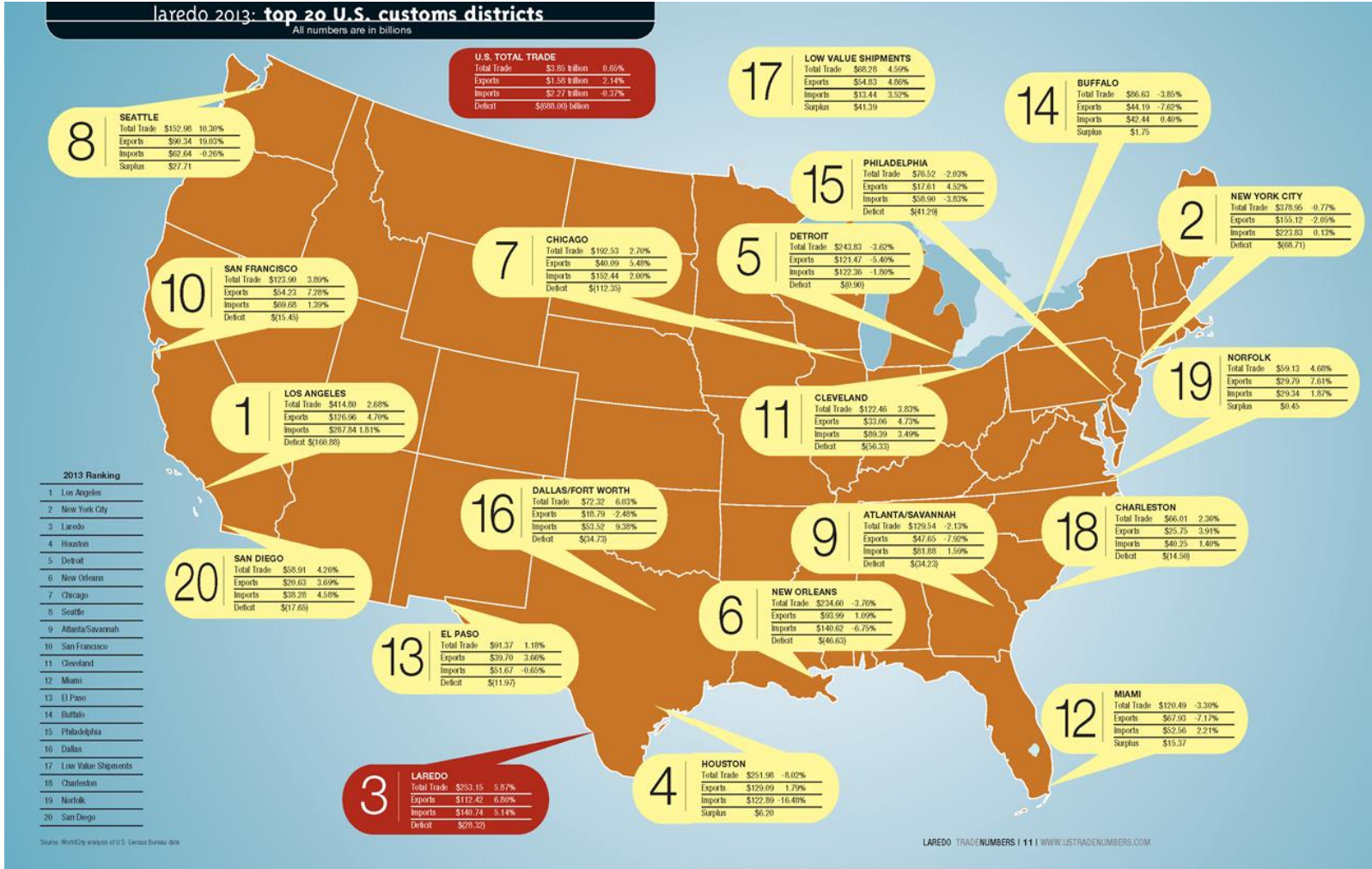
Binational Center:  
Eagle Ford –Cuenca  
Burgos Community  
Program. TAMIU.

**DISCOVER THE INTERNATIONAL YOU!**

# USA Custom Districts/Ports (2013)



TEXAS A&M  
INTERNATIONAL  
UNIVERSITY



WorldCity - Laredo Trade Numbers

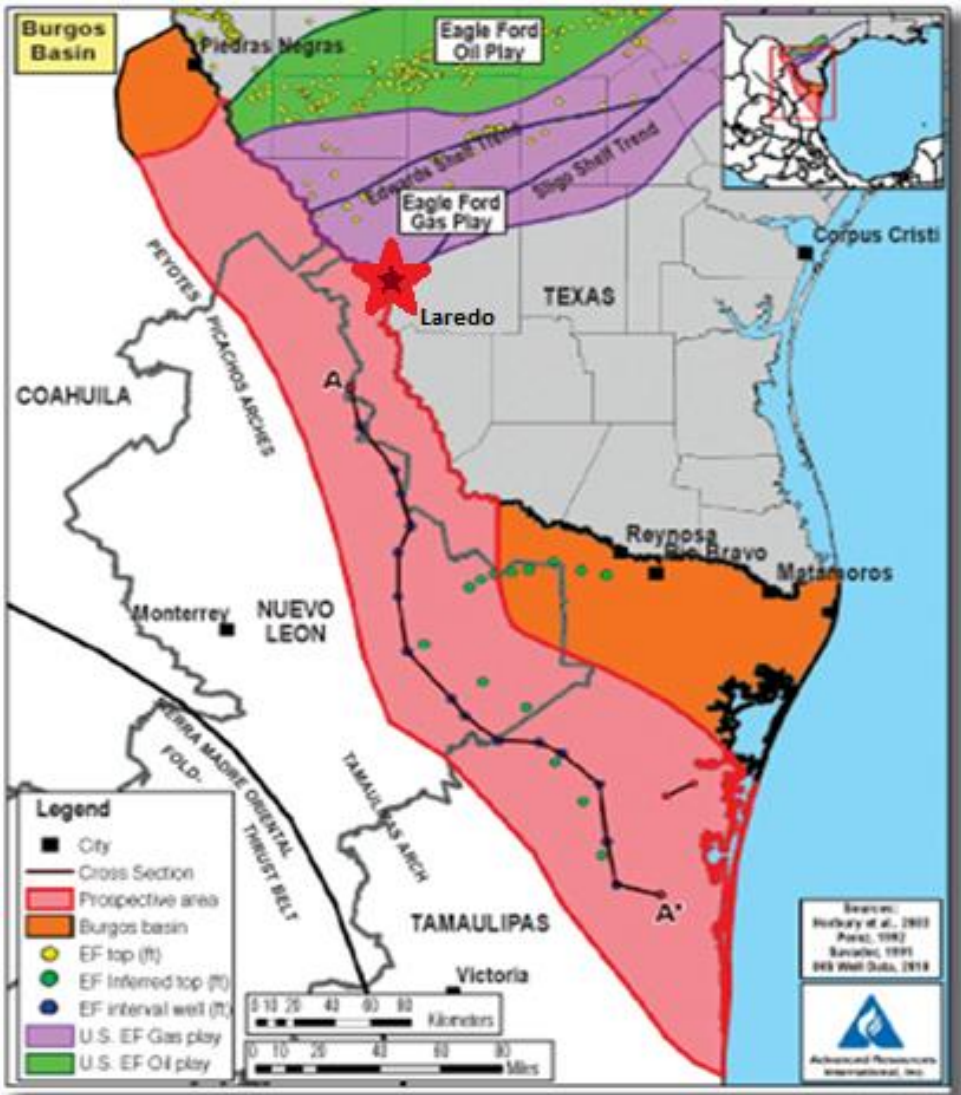
DISCOVER THE INTERNATIONAL YOU!

Source:  
Binational Center:  
Eagle Ford -Cuenca  
Burgos Community  
Program. TAMIU.

# Regional Value/Energy & Industry



TEXAS A&M  
INTERNATIONAL  
UNIVERSITY



## Energy industry:

Eagle Ford Shale (US)

Cuenca de Burgos (Mexico)

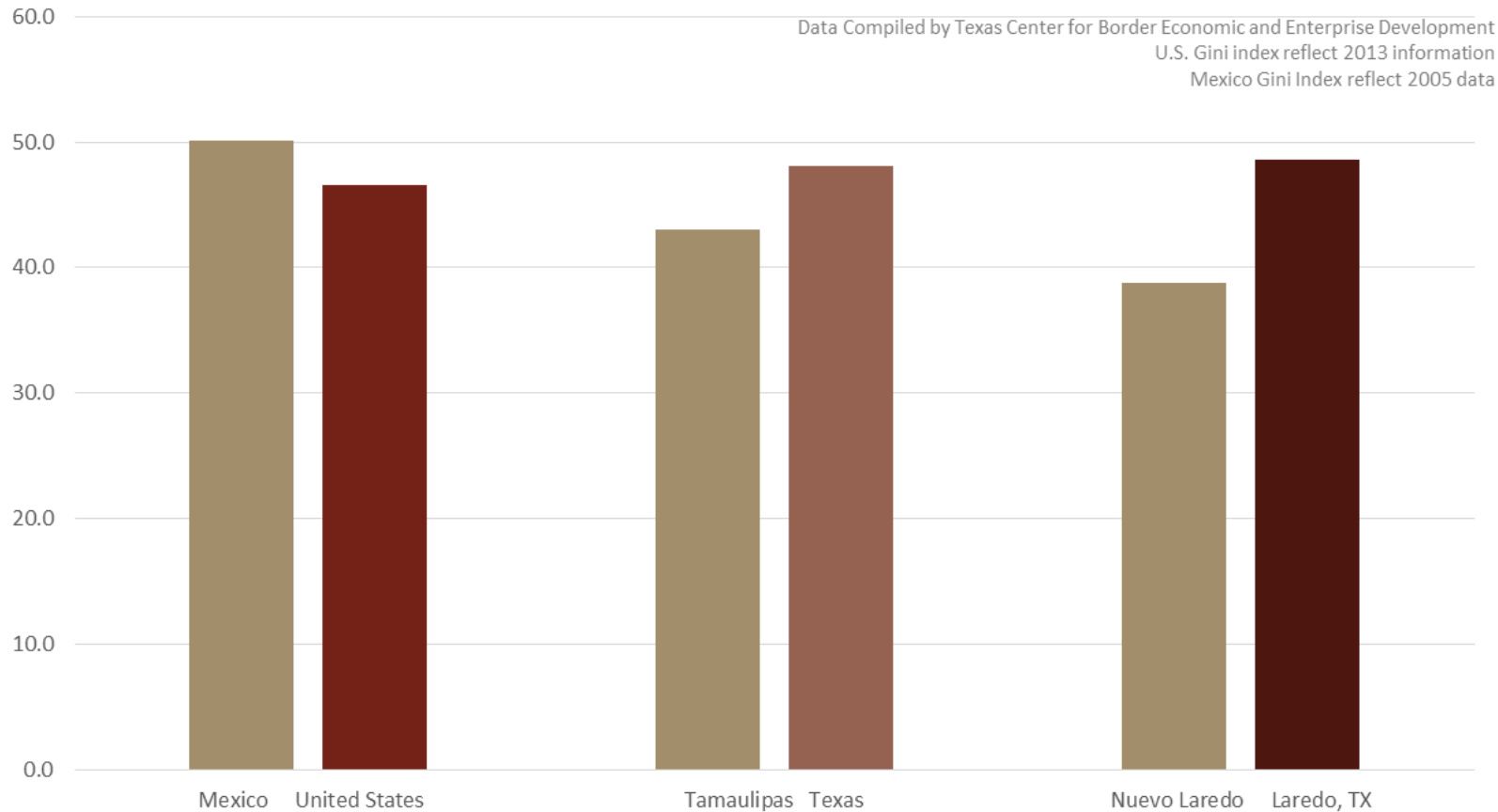
## Maquiladora and industrial production:

Laredo/Nuevo Laredo  
McAllen-RGV/Reynosa  
Brownsville/Matamoros

Source:  
Binational Center:  
Eagle Ford –Cuenca  
Burgos Community  
Program. TAMIU.

DISCOVER THE INTERNATIONAL YOU!

# Gini Index: US/Mexico Border Region



Source: <http://www.coneval.gob.mx/Medicion/Paginas/Mapas-de-desigualdad-2000-2005-en.aspx>  
U.S. Census' Historical Income Tables: Income Inequality - <http://www.census.gov/hhes/www/income/data/historical/inequality/>  
Source: Pediacities, <http://www.pediaciti>

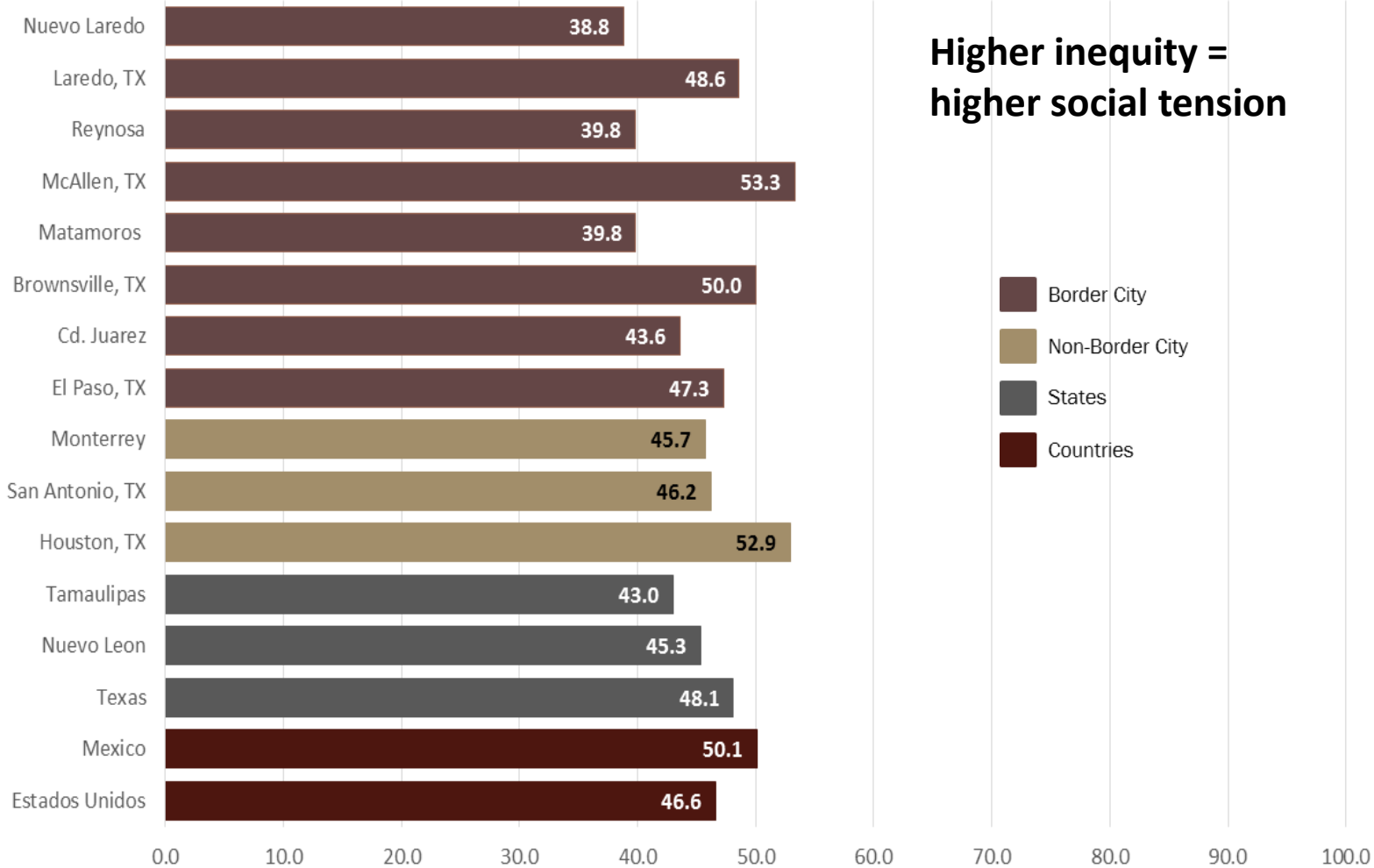
Source:  
Texas Center for  
Border Economic and  
Enterprise  
Development. TAMIU.

Measuring inequality:  
0=Perfect equality      100=Perfect Inequality

DISCOVER THE INTERNATIONAL YOU!



# Gini Index: Tamaulipas and Texas



Data Compiled by Texas Center for Border Economic and Enterprise Development  
 Source: Pediacities Gini Index 2013

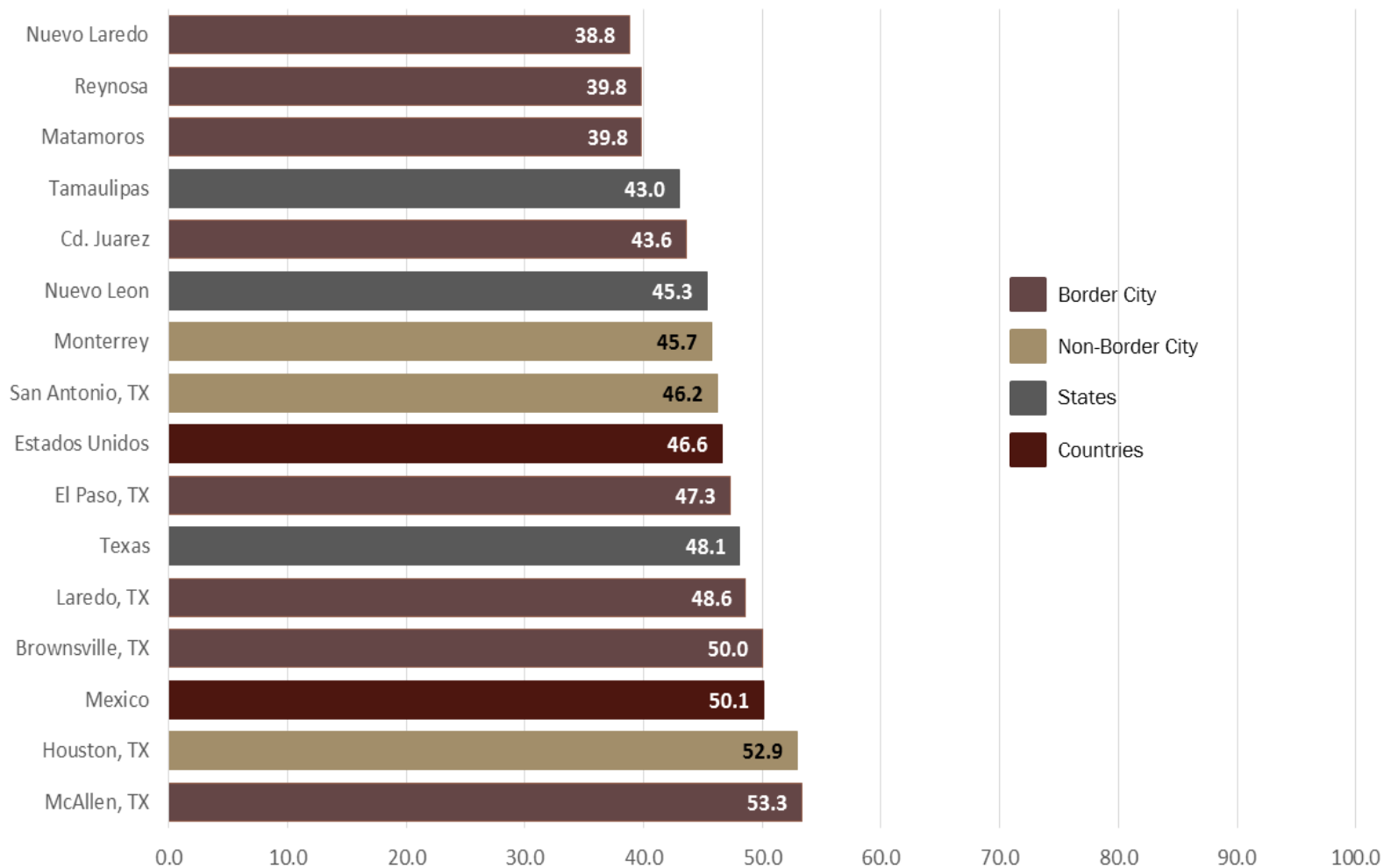
Source: U.S. Census' Historical Income Tables: Income Inequality 2013  
 Mapas de Desigualdad 2000-2005 Coneval

Measuring inequality:  
 0=Perfect equality      100=Perfect Inequality



**DISCOVER THE INTERNATIONAL YOU!**

# Gini Index: US, Texas and Selected Cities



Data Compiled by Texas Center for Border Economic and Enterprise Development  
 Source: Pediacities Gini Index 2013

Source: U.S. Census' Historical Income Tables: Income Inequality 2013  
 Mapas de Desigualdad 2000-2005 Coneval

Measuring inequality:  
 0=Perfect equality      100=Perfect Inequality

**DISCOVER THE INTERNATIONAL YOU!**

Source:  
 Texas Center for  
 Border Economic and  
 Enterprise  
 Development. TAMIU.

# Conflict and Commerce

USA Ranks 97 of 162 nations in Global Peace Index\*

## US Top Ten Trade Partners

# 1	Mexico .....	135 of 162
# 2	China .....	101 of 162
# 3	Malaysia .....	29 of 162
# 4	Japan .....	6 of 162
# 5	Thailand .....	120 of 162
# 6	Nicaragua .....	64 of 162
# 7	United Kingdom ...	43 of 162
# 8	Germany .....	16 of 162
# 9	Canada .....	8 of 162
#10	Taiwan .....	27 of 162

\**Vision of Humanity.org*

Source:  
Binational Center:  
Eagle Ford –Cuenca  
Burgos Community  
Program. TAMIU.

**DISCOVER THE INTERNATIONAL YOU!**



THE INTERNATIONAL

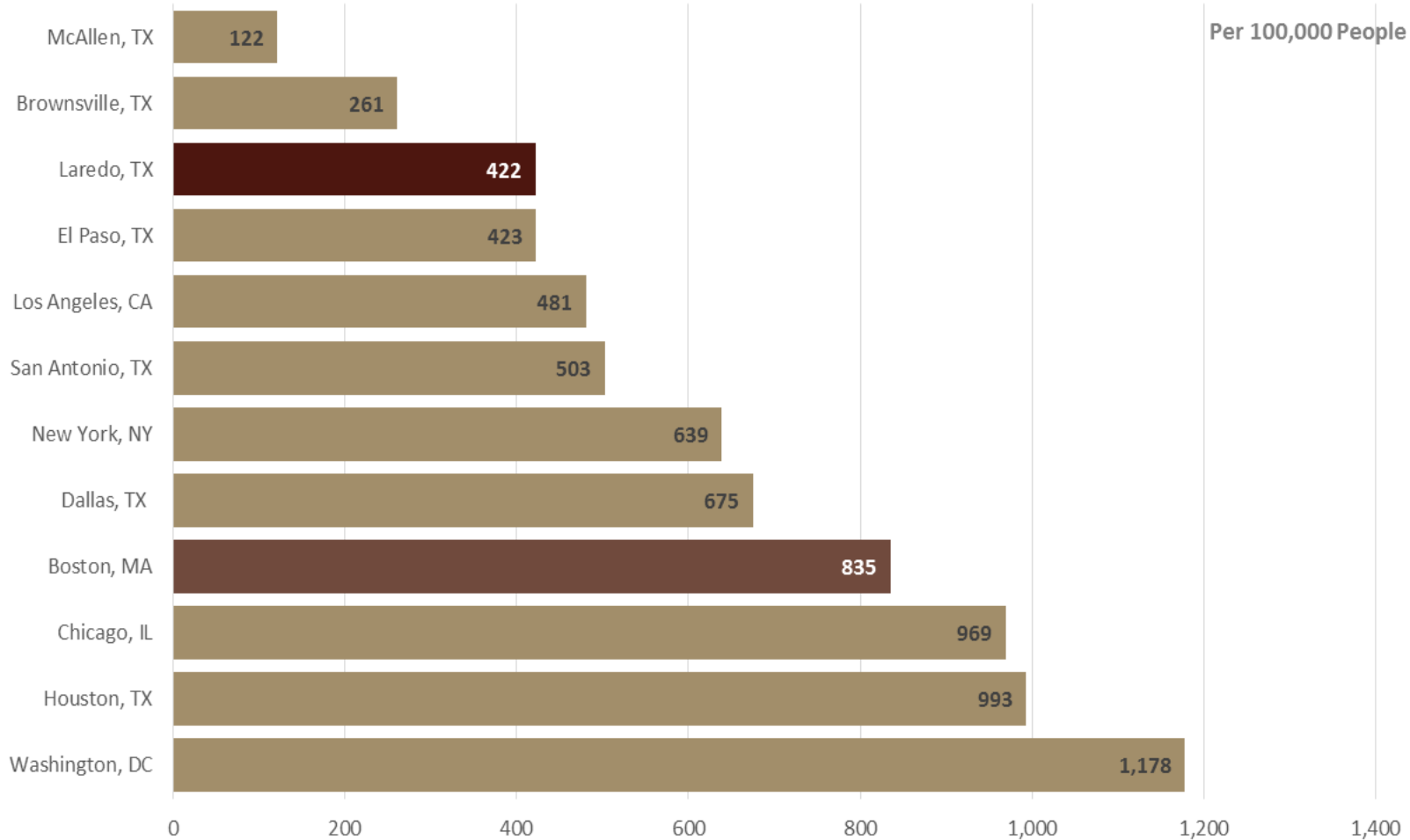
TEXAS A&M  
INTERNATIONAL  
UNIVERSITY



Border Economic and Enterprise Development

# National Crime Rates

## 2012 Uniform Crime Report - Violent Crime Totals



Violent Crimer include : Aggravated Assault, Forcible Rape, Murder and Nonnegligent Manslaughter, and Robbery  
Source: <http://www.ucrdatatool.gov/index.cfm> Compiled by the Texas Center for Border Economic and Enterprise Development.



THE INTERNATIONAL

TEXAS A&M  
INTERNATIONAL  
UNIVERSITY



Source:  
Texas Center for  
Border Economic and  
Enterprise  
Development. TAMIU.

DISCOVER THE INTERNATIONAL YOU!

# How safe is Mexico?



THE INTERNATIONAL

TEXAS A&M  
INTERNATIONAL  
UNIVERSITY



Texas A&M  
International  
University

BINATIONAL  
CENTER

RESEARCH  
EDUCATION  
LEADERSHIP  
PUBLIC SERVICE



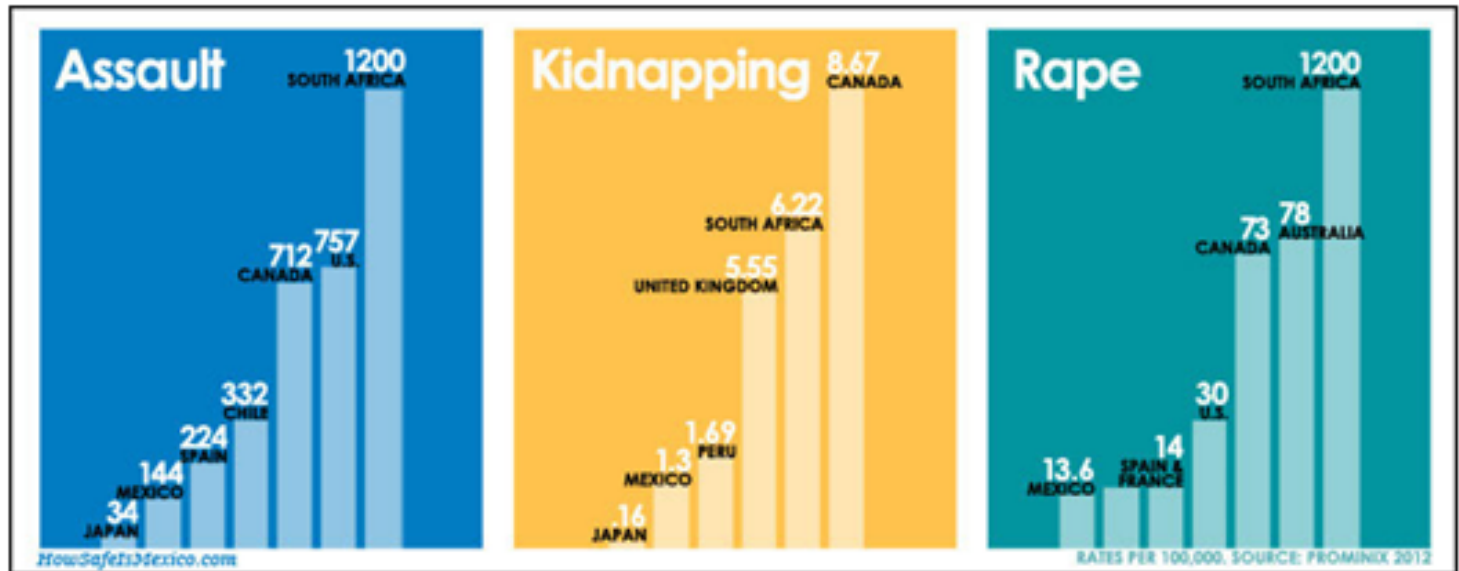
TEXAS  
CENTER

Border Economic and Enterprise Development

## Mexico has very low violent crime rates.

The U.S. Assault rate is 5 times higher than Mexico's. Mexico's violent crime rates for Assault, Kidnapping and Rape are substantially lower than Canada's and yet the U.S. State Department issues no such warnings for Canada. The rate for Rape in the U.S. is more than double the rate in Mexico. The numbers in the charts below have been adjusted for unreported crime from the respected 2012 Prominix report and are the most accurate statistics available on this subject.

Unless you are involved in the drug trade, you are statistically safer in Mexico than anywhere else in North America. Even though the U.S. murder rate of 4 per 100,000 is lower than Mexico's, tourists and visitors are statistically safer in Mexico and much less likely to be a victim of violent crime than in the U.S., Canada and many other countries regarded as safe.



[http://howsafeismexico.com/global\\_crime\\_rates.html](http://howsafeismexico.com/global_crime_rates.html)

While the infamous cartel crimes in Mexico are disturbing, the rate of violent crimes in Mexico is still lower than the rates in many countries thought of as "safe." [COMPARE TRAVEL DESTINATIONS](#)

DISCOVER THE INTERNATIONAL YOU!



THE INTERNATIONAL

TEXAS A&M  
INTERNATIONAL  
UNIVERSITY

# Undisputed facts. What are we proud of?

## Laredo, Texas\*:

- #1 Land port in the U.S. and Western Hemisphere
- #3 Customs District in the U.S. (2013)
- #7 Cargo airport in the U.S.

## Nuevo Laredo, Mexico\*\*:

- #1 land port and customs district of Mexico (trucks and rail cars).
- 343 National Custom Brokers operate in the city (217 local and 126 from other cities, out of a total of 829 Custom Brokers in all Mexico).
- 22.64% of all Mexican global trade operations cross through Nuevo Laredo (77.36% crosses through the other 48 Mexican ports combined).
- 42.41% of all U.S.-Mexico trade operations cross through Nuevo Laredo (57.59% crosses through the other 56 border ports combined).

- **Tamaulipas-Texas Border has 17 border crossings.**



Sources:

\* Mayor Pete Saenz  
"State of the City of  
Laredo address",  
March 18, 2015.

\*\* Nuevo Laredo  
Custom Brokers  
Association.

DISCOVER THE INTERNATIONAL YOU!



THE INTERNATIONAL

TEXAS A&M  
INTERNATIONAL  
UNIVERSITY



## Laredo, Texas:

- 3.0% annual job growth rate
- 4.6% unemployment rate
- 28.5% reduction in crime since 2009

## Laredo, Texas + Nuevo Laredo, Mexico:

- Combined population (2010): 620,119
- 12,000 daily commercial truck crossings
- 26,000 daily non-commercial vehicle crossings
- 1,800 daily rail car crossings
- 17,000 daily pedestrian crossings



Sources:

\* Mayor Pete Saenz  
"State of the City of  
Laredo address",  
March 18, 2015.

Texas Center for  
Border Economic and  
Enterprise  
Development. TAMIU.

# *What do we want?*

- **Create more well paid jobs**
- **Have more prosperity**
- **Have a sustainable quality of life**
- **Have well planned and safe urban areas**
- **Increase economic development**
- **Have more businesses and industries**
- **Strength in numbers**
- **Capitalize the potential of our region**





# *How can we achieve this?*

- **Pooling our strengths and resources**
- **Developing a common strategic plan**
- **Defining common goals and objectives**
- **Bridging the public and private sectors objectives with research and data useful for decision makers**
- **Introducing our region to the global community**
- **Working together**



# Who are the partners?

- **Government**
  - *US: State, County and Cities*
  - *Mexico: Estado y Municipios*
- **Industry**
  - *Organizations (Canacintra, CODEIN, LDF, LMA, INDEX, etc).*
- **Commerce**
  - *Organizations (CANACO, COPARMEX, Chamber of Commerce, etc.).*
- **Services**
  - **US Professionals (Custom Brokers, Engineers, etc).**
  - **Mexican Professionals (Agentes Aduanales, Transportistas, etc).**
- **Academia**



TEXAS A&M  
INTERNATIONAL  
UNIVERSITY



DISCOVER THE INTERNATIONAL YOU!

# *Working Together: What's next?*

## **Strategic areas**

*Energy*

*International Trade and Logistics*

*Industry*

*Businesses and Services*

*Agriculture*

*Tourism*

## **Cross-Cutting Requirements**

*Environmental Sustainability*

*Building Social Capital*

*Increased Competitiveness*

*Better use of Technology*

## **Consequences**

*Economic and Infrastructural Development*

*Social Cohesion and Development*

*Human Resources Development*

## **Actions**

*Benchmarking*

*Replicating of Cases of Success*

*Added Value to the Region*



THE INTERNATIONAL

TEXAS A&M  
INTERNATIONAL  
UNIVERSITY

Texas A&M  
International  
University

BINATIONAL  
CENTER

RESEARCH  
EDUCATION  
LEADERSHIP  
PUBLIC SERVICE

TEXAS A&M INTERNATIONAL UNIVERSITY  
**TEXAS  
CENTER**  
Border Economic and Enterprise Development

**DISCOVER THE INTERNATIONAL YOU!**

# Phases of the Project

## Phase 1

***Texas-Tamaulipas Border Cities and Counties***

***Deliverable:***

***Magazine and Website (January 2016).***

## Phase 2

***Texas-Tamaulipas Cities not on the border***

***Deliverables:***

***Magazine and Website***

***(SemiAnnual Updates June 2016 and January 2017).***

## Phase 3

***Region of Influence: Texas-Tamaulipas-Nuevo Leon-Coahuila***

***Deliverables:***

***Magazine and Website***

***(SemiAnnual Updates June 2017 and January 2018).***



THE INTERNATIONAL

TEXAS A&M  
INTERNATIONAL  
UNIVERSITY



# *Brainstorming*



**DISCOVER THE INTERNATIONAL YOU!**

# *Brainstorming*



DISCOVER THE INTERNATIONAL YOU!

# *Next Meeting/Agenda*



TEXAS A&M  
**INTERNATIONAL**  
UNIVERSITY



**DISCOVER THE INTERNATIONAL YOU!**

*For more information please contact:*



TEXAS A&M  
INTERNATIONAL  
UNIVERSITY

**Maria Eugenia Calderon-Porter**

Asst. Vice President of Office of Global Initiatives

Director of the Binational Center

Laredo, Texas

Telephone: (956) 326-2834

Email: [mcalderon@tamiu.edu](mailto:mcalderon@tamiu.edu)

[www.tamiu.edu/binationalcenter](http://www.tamiu.edu/binationalcenter)



**Dr. Federico Schaffler**

Director of the Texas Center for Border Economic and Enterprise Development

Laredo, Texas

Telephone: (956) 326-2520

Email: [wfschaffler@tamiu.edu](mailto:wfschaffler@tamiu.edu)

<http://texascenter.tamiu.edu>



**DISCOVER THE INTERNATIONAL YOU!**