



LAREDO STATE UNIVERSITY

CAMPUS FACILITIES
PHASE ONE

Job No. 115-2729
FPC/JK JV: #54501

MECHANICAL-BLDG. B
LEVEL 1 & 2 FLOOR PLANS

Checked By SAK

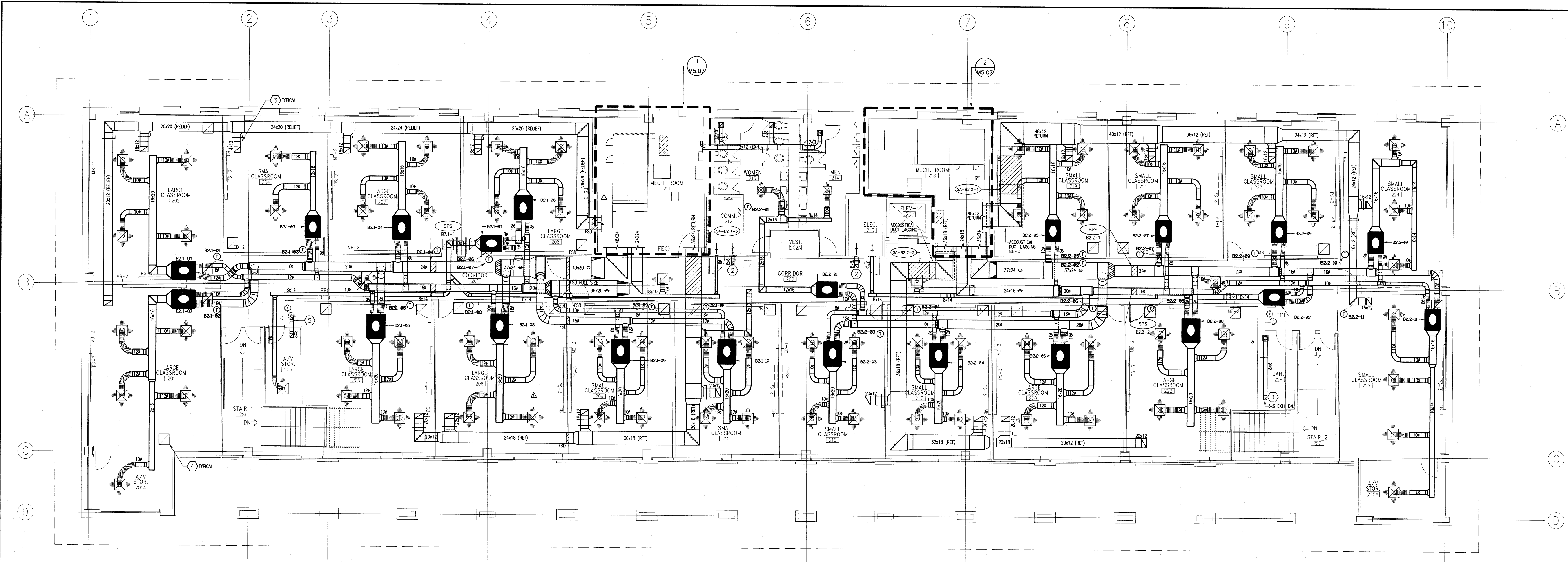
Drawn By DJK

Date 07/25/1993

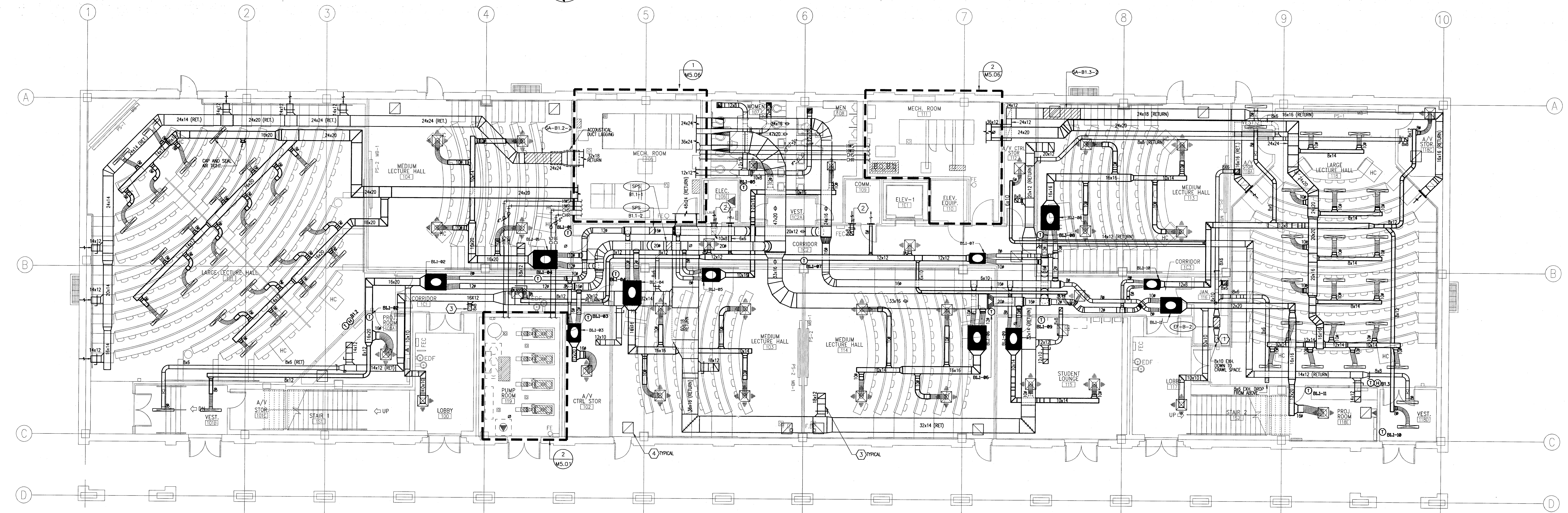
Sheet No.

M4.14

of 52



MECHANICAL - 2ND LEVEL FLOOR PLAN-BLDG. B
SCALE: 1/8" = 1'-0"



MECHANICAL - 1ST LEVEL FLOOR PLAN-BLDG. B
SCALE: 1/8" = 1'-0"

GENERAL NOTES:
1. ALL LOW PRESSURE DUCT BRANCHES (SUPPLY, RETURN & CHASIS) SHALL BE PROVIDED WITH A MANUAL DAMPER. DAMPER SHALL BE LOCATED IMMEDIATELY AFTER BRANCH DIVISION. SUPPLY BRANCHES SHALL BE PROVIDED WITH A BELMOUTH SPIN-IN FITTING WITH MANUAL BALANCING DAMPER (RE: 12/M3.04).
2. REFER TO M7 SERIES DRAWINGS FOR AIR DISTRIBUTION AND TERMINAL UNIT SCHEDULES.

- GENERAL NOTES:**
1. PROVIDE FIRE DAMPER AND ACCESS DOOR AT FLOOR PENETRATION.
 2. RETURN AIR TRANSFER DUCT WITH SIDEWALL RETURN AIR GRILLE.
 3. RETURN AIR DUCT WITH SOUND BOOT.
 4. RETURN AIR GRILLE WITH SOUND Baffle. RE: 13/M3.05
 5. RETURN AIR TRANSFER DUCT.
 6. 1" DRAIN TO DOWN AND CONNECT TO SINK CONDENSATE TRAP/PIPE.

RECORD DRAWING
DATE: 04/05/96
These Record Drawings have been prepared, in part, on the basis of information compiled and furnished by others. The Architect/Engineer cannot ensure its accuracy, and therefore cannot be responsible for any errors or omissions which have been incorporated into this document as a result.