

Revisions

RECORD DRAWING	04/05/98

**FORD, POWELL & CARSON, INC.**  
**JONES & KELL INC.**  
*Joint Venture Architects*

1108 East Commerce Street / San Antonio, Texas 78205 / 210-226-1216 / Fax 210-226-9462



**LAREDO STATE UNIVERSITY**  
**CAMPUS FACILITIES PHASE ONE**

Job No. TAMUS- #16-2729  
FPC/JK JV: #54501

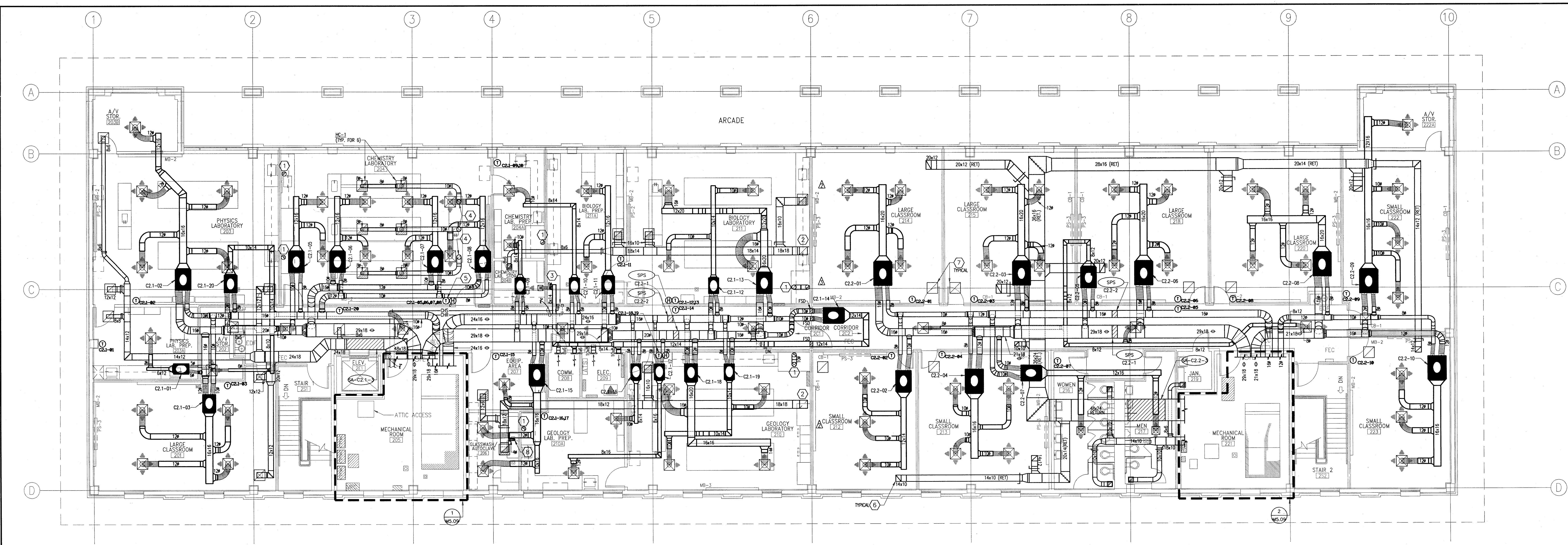
**MECHANICAL-BLDG. C  
LEVEL 1 & 2 FLOOR PLANS**

Checked By SAK  
Drawn By DJK

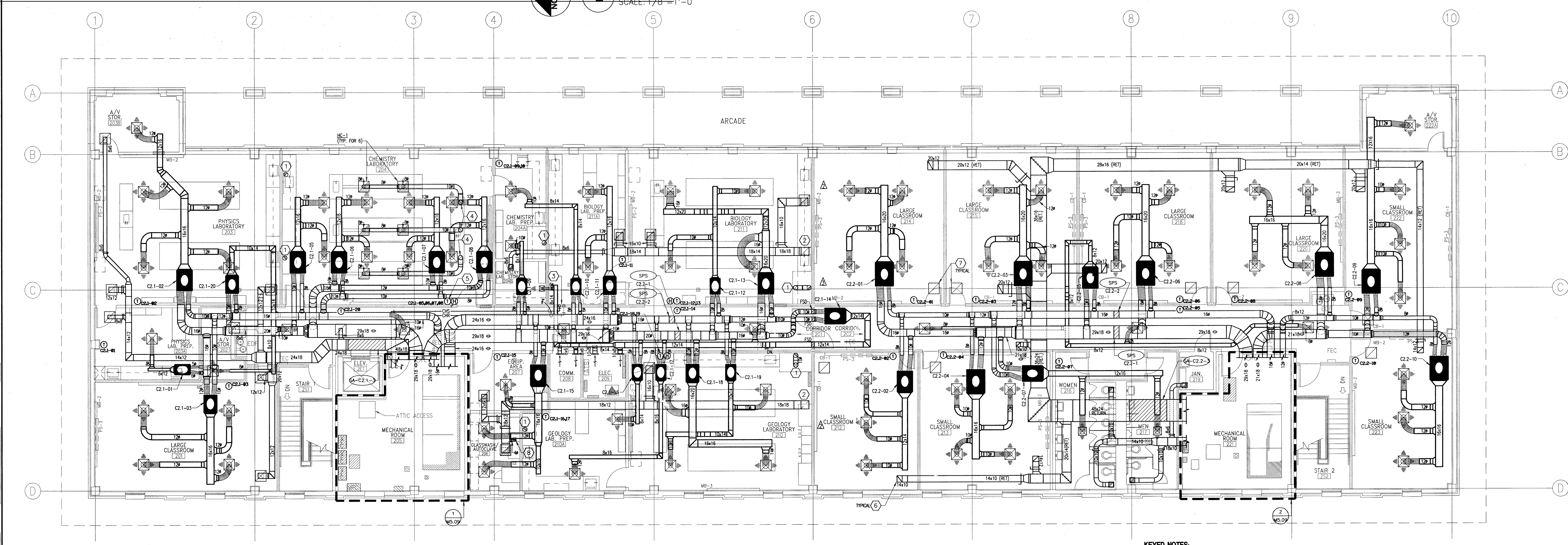
Date 07/25/1993

Sheet No. **M4.15**  
of 52

6 & A Job No. 1-287-88-00



**MECHANICAL - 2ND LEVEL FLOOR PLAN-BLDG. C**  
SCALE: 1/8" = 1'-0"  
NORTH



**MECHANICAL - 1ST LEVEL FLOOR PLAN-BLDG. C**  
SCALE: 1/8" = 1'-0"  
NORTH

**GENERAL NOTES:**

- ALL LOW PRESSURE DUCT BRANCHES (SUPPLY, RETURN & EXHAUST) SHALL BE PROVIDED WITH A MANUAL GATE. LOWER SHALL BE LOCATED IMMEDIATELY AFTER BRANCH DIVISION. SUPPLY BRANCHES SHALL BE PROVIDED WITH A BELLOWSH SPIN-IN FITTING WITH MANUAL BALANCING DAMPER (RE: 12/A3.04).
- REFER TO M7 SERIES DRAWINGS FOR AIR DISTRIBUTION AND TERMINAL UNIT SCHEDULES.

- KEYED NOTES:**
- 10" STAINLESS STEEL FUME HOOD EXHAUST RISE TO ATTIC. RE: 4/M5.01. PROVIDE STAINLESS STEEL MOTORIZED DAMPER AT HOOD DISCHARGE.
  - EXHAUST DUCT RISE TO ATTIC. RE: 4/M5.01
  - 3/4" CHS & CHR DROP IN WALL AND CONNECT TO PLANT GROWTH CHAMBER.
  - 10" STAINLESS STEEL CANOPY HOOD EXHAUST RISE TO ATTIC. RE: 4/M5.01
  - WALL MOUNTED "ON-OFF" SWITCH FOR CANOPY HOOD EXHAUST FAN. LABEL SWITCH "CANOPY HOOD EXHAUST".
  - RETURN AIR DUCT WITH SOUND BOOT.
  - RETURN AIR GRILLE WITH SOUND Baffle. RE: 13/M3.05
  - SUPPLY GRILLE. SB, 12X12, 465 CFM.
  - RETURN GRILLE. RB, 12X12, 465 CFM.

**RECORD DRAWING**  
DATE: 04/05/98  
These Record Drawings have been prepared, in part, on the basis of information compiled and furnished by others. The Architect/Engineer cannot assume its accuracy, and therefore cannot be responsible for any errors or omissions which have been incorporated into this document as a result.

NAME: 28788M02.DWG LITS: SCALE: 9/8 DATE: 04-16-1998 BY: 03/28 PLOTTED BY: DJK