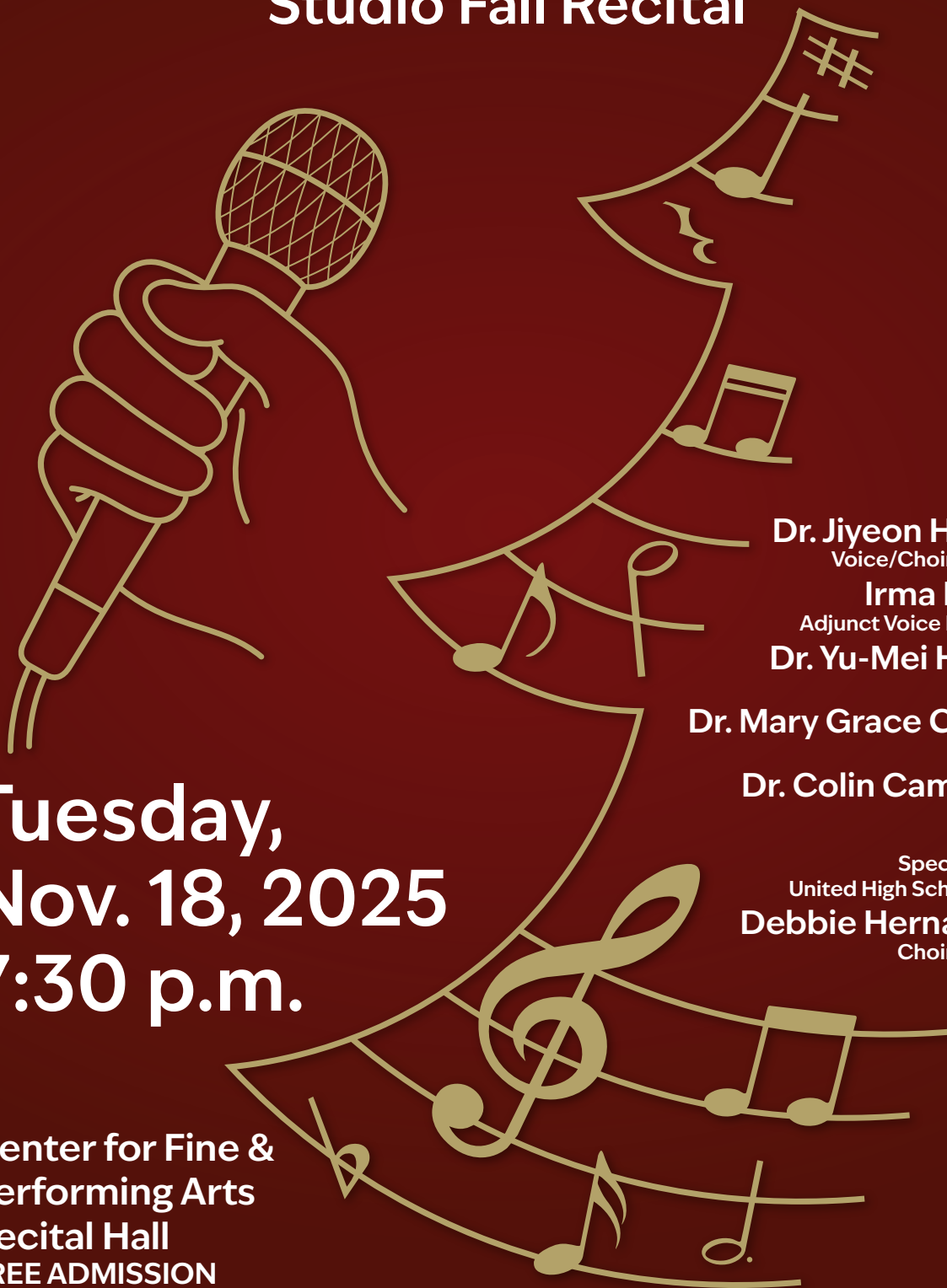




TEXAS A&M INTERNATIONAL UNIVERSITY
COLLEGE OF ARTS AND SCIENCES DEPARTMENT OF FINE AND PERFORMING ARTS

CHOIR/VOICE

Studio Fall Recital



**Tuesday,
Nov. 18, 2025
7:30 p.m.**

Dr. Jiyeon Hwang,
Voice/Choir Director

Irma Reyes,
Adjunct Voice Professor

Dr. Yu-Mei Huang,
Pianist

Dr. Mary Grace Carroll,
Pianist

Dr. Colin Campbell,
Organist

Special Guest:
United High School Choir
Debbie Hernandez,
Choir Director

Center for Fine &
Performing Arts
Recital Hall
FREE ADMISSION
Donations gratefully
accepted at the door

TAMIU Voice & Chorale Recital

Texas A&M International University
Department of Fine and Performing Arts
November 18, 2025 | 7:30 PM

Voice Faculty : Dr. Jiyeon Hwang, Mrs. Irma Reyes | Collaborative Pianist : Dr. Yu-Mei Huang

Program

Oración de las madres que tienen a sus
hijos en brazos

Manuel de Falla
(Spain, 1876-1946)

Sop. Carolina Pena

Con amores, la mi madre

Fernando Obradors
(Spain, 1897-1945)

Mezzo. Mia zamora

Chiquitita la novia

Fernando J. Obradors
(Spain, 1897-1945)

Sop. Valeria

Flor Roja
From “Los Gavilanes”

Jacinto Guerrero
(Spain, 1895-1951)

Ten. Rogelio Santiago Monto

Estrellita

Agustín Lara
(Mexico, 1897-1970)

Sop. Cris Lopez

Júrame

María Grever
(Mexico, 1885–1951)

Sop. Leslie Coronado

Granada

Agustín Lara
(Mexico, 1897–1970)

Ten. Jared Garcia-Lopez

Intermission

Choir Director: Dr. Jiyeon Hwang
Collaborative Pianist: Dr. Mary Grace Carroll | Organist: Dr. Colin Campbell
Featured Choir: United High School Choir, directed by Mrs. Debbie Hernandez

Cantique de Jean Racine

Piano Dr. Mary Grace Carroll

Gabriel Fauré
(France, 1845–1924)

Sing We Now of Christmas

arranged by F. Prentice

Merry Christmas, Merry Christmas

Ding! Dong! Merrily on high

Organ Dr. Colin Campbell

Featuring United High School Choir

Vivaldi – Gloria

(Gloria in excelsis Deo)

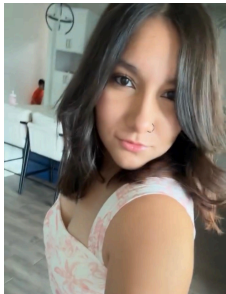
Featuring United High School Choir

Antonio Vivaldi
(Italy, 1678–1741)

Profile



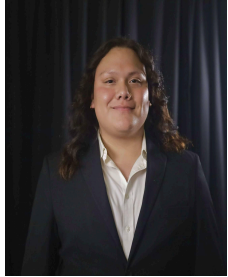
Carolina Pena is a junior at Texas A&M International University, pursuing a degree in Music Education. She hopes to become a music teacher and shares her passion for music through performance and study. Carolina enjoys listening to music and hopes the audience enjoys her performance as well. In her free time, she loves to start her mornings by enjoying the sunrise. She is a student of Ms. Irma Reyes.



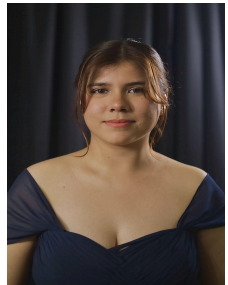
Mia Zamora, Mezzo-Soprano, is currently a Music Education major at Texas A&M International University. She teaches piano and voice to children, sharing her passion for music with young students. Mia has performed with the Laredo Philharmonic Orchestra and Choir in major choral works, including *Handel's Messiah* (2022) and the 2023 Christmas Concert. She continues to expand her experience as both a performer and educator. She is a student of Ms. Irma Reyes.



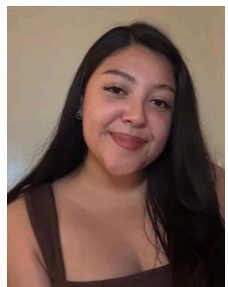
Valeria Gutierrez, Soprano, is currently a student at Texas A&M International University, majoring in Music Education with an All-Level Certification. She has performed with the Laredo Philharmonic Choir in choral works such as “Handel’s Messiah” and “Vesperae Solennes”. Valeria has also been an active member of the Texas A&M International University’s Chorale and Voice Studio. In being a part of these ensembles, she has performed many choral works and given life to roles such as Adele (Die Fledermaus), Mallika (Lakme), Susanna (Le Nozze di Figaro), and Despina (Così fan Tutte). Valeria plans on continuing her education and experience within the music education field through new challenges and efforts. She is a student of Dr. Jiyeon Hwang



Rogelio Santiago Montoya is a Music Performance student at Texas A&M International University. He has been an active performer in the musical theater community, appearing in productions such as *Ride the Cyclone* (Noel), *Company* (David), *Matilda* (Ensemble), and *The Little Mermaid* (Ensemble). His operatic experience includes roles in *Bastien und Bastienne* (Bastien), *The Pirates of Penzance* (Frederic), *The Mikado* (Nanki-Poo), and *Der Schauspieldirektor* (Monsieur Vogelsang). Rogelio has also performed with the Laredo Philharmonic Choir in choral works such as *Handel's Messiah* and *Vesperae Solennes*. During his university experience, he has portrayed roles including Tamino and Monostatos (*Die Zauberflöte*), Don Ottavio (*Don Giovanni*), Tonio (*La Fille du Régiment*), and Tony (*West Side Story*). Rogelio hopes to continue gaining experience in opera and musical theater while sharing his love for the performing arts with his family, friends, and community. He is a student of Dr. Jiyeon Hwang.



Cristian Lopez is a Lyric coloratura soprano, Music Performance major at Texas A&M International University. She has been an active performer in the TAMIU Voice Studio, participating in every studio recital since beginning her studies. Cristian has also sung with the Laredo Philharmonic Choir in choral works such as *Melodies Around the World*. Throughout various university concerts and recitals, she has portrayed roles such as Papagena, Pamina, and the First Lady (*Die Zauberflöte*), Zerlina (*Don Giovanni*), and Lakmé (Lakmé). She is a student of Dr. Jiyeon Hwang.



Leslie Coronado is a lyric leggero soprano and Music Performance major with a concentration in Voice at Texas A&M International University, where she studies under Dr. Jiyeon Hwang. She is an active performer recognized for her versatility and artistry across a wide range of repertoire. Leslie has performed with several distinguished ensembles, including Mariachi Internacional, the TAMIU Orchestra, the Laredo Philharmonic Chorale, and the TAMIU Chorale, where she was featured as the soprano soloist in Mozart's *Vesperae Solennes de Confessore*. Her operatic stage experience includes performances

as the Second Lady and Pamina (The Magic Flute), Zerlina (Don Giovanni), Mimi (La Bohème), and Maria (West Side Story). She continues to pursue performance opportunities that highlight her vocal abilities while contributing to the vibrant musical life of her university and community. She is a student of Dr. Jiyeon Hwang.



Jared Garcia, Tenor, is a senior Music Performance student at Texas A&M International University. He is an active performer within the Laredo community, known for his versatility and expressive artistry across a wide range of musical genres. Jared has performed with several distinguished ensembles, including Mariachi Internacional, Mariachi Arrieros, the TAMIU Chorale, and TAMIU Jazz. His operatic stage experience includes portraying Mario Cavaradossi (*Tosca*), Rodolfo (*La Bohème*), Nemorino (*L'elisir d'amore*), Roméo (*Roméo et Juliette*), the Duke of Mantua (*Rigoletto*), and Tony (*West Side Story*). He continues to pursue performance opportunities that showcase his vocal skills and artistic growth. He is a student of Dr. Jiyeon Hwang.

TAMIU Voice Studio Recital Program Notes

Oración de las madres que tienen a sus hijos en brazos

Manuel de Falla (Spain, 1876–1946) Soprano: Carolina Pena

A tender and heartfelt song, *Oración de las madres* portrays the loving prayers of mothers holding their children. Listen for Falla's delicate harmonic textures and the gentle, expressive line that evokes deep maternal affection. Carolina's lyrical interpretation highlights the warmth and intimacy of this Spanish art song.

Con amores, la mi madre by Fernando Obradors (Spain, 1897–1945)

Mezzo-soprano: Mia Zamora

This charming Spanish art song celebrates love and family. Obradors' lyrical melody and subtle rhythmic nuances reflect traditional Spanish song style. Listen for the expressive phrasing and warmth in the mezzo line, which brings the affectionate text to life.

Chiquitita la novia by Fernando J. Obradors (Spain, 1897–1945)

Soprano: Valeria Gutierrez

A playful and romantic song, *Chiquitita la novia* shows Obradors' gift for capturing the character of Spanish folk melodies. Listen for Valeria's clarity in articulation, expressive ornamentation, and lyrical elegance that conveys the humor and charm of the text.

Flor Roja (from *Los Gavilanes*) by Jacinto Guerrero (Spain, 1895–1951)

Tenor: Rogelio Santiago Montoya

This famous zarzuela aria tells the story of offering a red flower as a symbol of love. Listen for the soaring tenor lines and Spanish lyrical style, combining expressive legato phrasing with dramatic flair. Rogelio brings life to Gustavo's passionate and romantic expression.

Estrellita by Agustín Lara (Mexico, 1897–1970)

Soprano: Cristian Jacqueline Lopez

A beloved Mexican song, *Estrellita* (“Little Star”) is tender and lyrical. Listen for the gentle melodic lines and delicate harmonic shifts that reflect the song’s simplicity and charm. Cristian’s clear tone and expressive phrasing highlight the beauty and innocence of this classic song.

Júrame by María Grever (Mexico, 1885–1951) Soprano: Leslie Coronado

Júrame is a passionate bolero asking for love and devotion. Listen for Grever’s sweeping melodies and emotional intensity, with long, expressive lines that showcase the soprano’s vocal warmth and dramatic interpretation. Leslie brings the heartfelt plea to life with elegance and depth.

Granada by Agustín Lara (Mexico, 1897–1970) Tenor: Jared Garcia-Lopez

A dramatic and romantic song celebrating the beauty of Granada, Spain. Listen for sweeping melodic lines and rhythmic intensity that capture the city’s passion and history. Jared conveys the grandeur and drama of Lara’s iconic composition with powerful expression and vocal strength.

TAMIU Chorale Concert Program Notes

Cantique de Jean Racine, Gabriel Fauré (France, 1845–1924)

One of Fauré’s most beloved choral works, *Cantique de Jean Racine* combines elegance, lyricism, and a serene, spiritual atmosphere. Composed in 1865 while Fauré was still a student at the École Niedermeyer, the piece sets a text by the 17th-century poet Jean Racine. Listen for the flowing melodic lines in the choir, the rich harmonic textures, and the subtle interplay between the voices, which create a peaceful, meditative mood.

Sing We Now of Christmas (arr. F. Prentice, United Kingdom, 20th century)

A lively and joyful carol celebrating the Christmas season. This arrangement by F. Prentice features rhythmic energy and bright harmonies. Listen for the cheerful articulation and playful call-and-response between sections of the choir, which bring the festive text to life.

Merry Christmas, Merry Christmas (USA, 20th century)

A warm and spirited holiday song that captures the excitement of the season. The piece combines accessible harmonies with light, flowing textures. Listen for the melodic clarity and joyful expression in the choir, highlighting the communal and celebratory spirit of Christmas.

Ding! Dong! Merrily on High (Traditional, arr. 20th century)

This traditional Christmas carol, arranged for organ and choir, is filled with festive energy and rhythmic vitality. Listen for the joyful “ding-dong” motifs that mimic the ringing of bells, and the lively interplay of the choral voices, creating a sense of celebration and holiday cheer.

Gloria (Gloria in excelsis Deo), Antonio Vivaldi (Italy, 1678–1741)

One of Vivaldi’s most iconic sacred works, *Gloria* is a brilliant example of Baroque choral writing. The piece alternates between exuberant, fast-moving sections and lyrical, expressive passages. Listen for the dramatic contrasts, virtuosic vocal lines, and bright, joyful harmonies, which convey the text’s praise and exultation. The organ accompaniment supports and enhances the choir’s brilliance

TAMIU Choir Ensemble

Soprano	Alto	Tenor	Bass
Abby Rangel Anaya	Aylin Vazquez	Rogelio Santiago Montoya	Alan Canales Alvarez
Leslie Coronado	Carolina Pena		Conner Reimund
Valeria Gutierrez	Itzel Cabrera		Eduardo Rayo
	Karina Ramirez Carrillo		
	Mia Zamora		
	Yura shin		



TEXAS A&M **INTERNATIONAL** UNIVERSITY
COLLEGE OF ARTS AND SCIENCES, DEPARTMENT OF FINE AND PERFORMING ARTS

TAMU.EDU/COAS/FPA • 956.326.2654 • @TAMUICFPA

FOR RECORDED EVENTS INFORMATION 24/7, CALL 956.326.3044



Thank You!

For your support of TAMU Fine and Performing Arts



SCAN HERE to donate
to the MUSIC program



SCAN HERE to donate
to the DANCE program



SCAN HERE to donate
to the ARTS program



SCAN HERE to donate
to the MARIACHI program



SCAN HERE to donate
to the THEATER program



SCAN HERE for upcoming
events information

