

F.M CANSECO
SCHOOL OF NURSING



STUDENT HANDBOOK
2006-2008

TEXAS A&M INTERNATIONAL UNIVERSITY
LAREDO, TEXAS

Table of Contents

	Page
I. INTRODUCTION.....	1
A. About the Canseco School of Nursing.....	2
B. Accreditation	4
II. PHILOSOPHY and GOALS.....	5
A. Texas A&M International University Mission Statement.....	6
B. Philosophy of the Canseco School of Nursing.....	7
C. Conceptual Framework.....	9
D. Program Objectives.....	11
III. ORGANIZATIONAL STRUCTURE.....	12
A. Texas A&M International University.....	13
B. School of Nursing.....	14
C. Campus Wellness Services.....	15
D. Nursing Faculty Bylaws.....	16
IV. CURRICULUM.....	19
A. Degree Requirements.....	20
B. Course Descriptions.....	21
C. Basic Curriculum Degree Plan 2005-2006.....	26
D. Basic Curriculum Degree Plan 2006-2007.....	27
E. Sequence of Courses RN/BSN.....	28
F. Credit for Prior Learning.....	29
G. Theory & Clinic Laboratory Hours.....	30
V. FACILITIES.....	31
A. F.M. Canseco School of Nursing.....	32
B. Library.....	33
C. International Language Institute.....	35
D. Computer Lab.....	35
E. Clinical Sites.....	36
VI. STUDENT LIFE.....	37
A. Student Rights.....	38
B. Student Responsibilities.....	40
C. Academic Honesty.....	41
D. Student Health.....	41
1. admission requirements.....	41
2. OSHA requirements.....	41

3.	drug, alcohol, tobacco & firearm policies.....	41
4.	Nursing Student Chemical Abuse or Dependency Policy.....	42
5.	TPAPN.....	44
6.	Report Form.....	45
E.	Clinical Guidelines.....	46
F.	Student Organizations.....	47
G.	Student-faculty Communication.....	48
H.	Financial Aid Opportunities.....	49
VII.	PROCEDURES AND POLICIES.....	50
A.	Admission to the Basic Nursing Program.....	51
1.	application process.....	51
2.	admission to clinical courses.....	51
B.	Admission to the RN/BSN Program.....	55
1.	application process.....	55
2.	student health requirements for clinical nursing courses.....	55
C.	Criminal Background and Drug Screening Policy and Procedure.....	56
D.	Transfer Applicants.....	61
E.	Licensure as a Registered Nurse.....	62
F.	Core performance Standards.....	64
G.	Student Selection.....	66
H.	Progression.....	66
1.	grading policies.....	66
2.	attendance policies.....	66
3.	course policies.....	67
4.	examination policy and guidelines.....	67
5.	grievance.....	68
6.	add, drop, withdraw and incomplete.....	69
7.	academic probation.....	70
8.	re-admission.....	70
I.	Graduation Requirements.....	71
1.	eligibility for graduation in basic nursing.....	71
Appendix A.....	72

INTRODUCTION

- ❖ ABOUT THE CANSECO SCHOOL OF NURSING
- ❖ ACCREDITATION

THE CANSECO SCHOOL OF NURSING

HISTORICAL OVERVIEW

Summer 1994	Approved by BOR, THECB for RN/BSN program Initial accreditation RN/BSN by State Board of Nurse Examiners
Spring 1995	First class of 32 RN/BSN students admitted
Spring 1996	First BSN graduates Full accreditation RN/BSN by State Board of Nurse Examiners
Spring 1997	Dedication of Canseco Hall Initial accreditation RN/BSN by National League for Nursing Accrediting Commission
Summer 1998	Approval by BOR, THECB for Basic BSN program Initial accreditation Basic BSN by State Board of Nurse Examiners
Fall 1998	Recruitment of faculty and students for Basic Program
Spring 1999	First class of 34 Basic BSN students began coursework Planning authority from THECB for MSN program
Fall 1999	75% of RN/BSN graduates were enrolled in Masters Education
Spring 2000	Second group of 30 Basic BSN students admitted
Spring 2001	Third group of 32 Basic students admitted First group of Basic BSN students graduate 86% pass rate on NCLEX-RN
Spring 2002	Fourth group of 40 basic nursing students admitted Full accreditation by NLNAC 95% pass rate on NCLEX-RN
Spring 2003	Fifth group of 40 basic students admitted 92% pass rate on NCLEX-RN
Spring 2004	Sixth cohort admitted 95% pass rate on NCLEX-RN
Summer 2004	First summer group of 20 basic BSN students admitted
Fall 2004	Initial approval of MSN program First cohort of 14 admitted
Spring 2005	Seventh Cohort admitted 100% pass rate on NCLEX-RN
Summer 2005	Second summer cohort admitted
Spring 2006	First graduates
Fall 2006	307 students enrolled with major in Nursing

FACULTY

In Fall 2006, the Canseco School of Nursing operates with twelve full-time faculty, and eighteen part time clinical adjunct faculty

STUDENTS

Since its inception in Spring 1995, the CSON has grown from an RN/BSN program with enrollment of 32 RN's seeking a Baccalaureate Degree to a full inventory of programs at Basic, RN/BSN and MSN levels. Fall 2006 enrollment includes 307 Nursing majors at TAMIU and a projected 150 prospective students completing prenursing coursework elsewhere.

SCHOLARSHIP

Scholarly activities of the School of Nursing include publication of journal articles and book chapters, presentations by faculty and/or students at local, national and international professional meetings, and applied research. The School has also actively sought grant support and has received funding from both private foundations and governmental resources.

CLINICAL PRACTICE

All faculty of the Canseco School of Nursing hold advanced practice credentials and maintain active practice as required to renew those credentials. Ongoing involvement in clinical practice is essential to effective, up-to-date teaching.

COMMUNITY PARTNERSHIPS

The School of Nursing is an integral part of Laredo's effort to provide accessible, high quality health care in the mid-Rio Grande border region. The growth and development of the School has been made possible by outstanding financial support (currently in excess of \$5 million) received from the Laredo community. The Lamar Bruni Vergara Trust and Mercy Health Systems of Texas provided funding for program development and faculty and student support. Spacious, state-of-the-art facilities in Canseco Hall and an endowed scholarship fund serve as a family memorial to a noted Laredo physician and his wife, Dr. F.M. and Mrs. Consuelo Canseco. Three other endowed scholarships honor Laredo families.

The School of Nursing, in turn, is highly aware of its responsibility to prepare nurses to help meet the health care needs of Laredo's culturally diverse population. The innovative, community-based curriculum combines mastery of acute clinical nursing competencies with effective community development strategies. Students and faculty work in community agencies and neighborhoods alongside other health care professionals throughout the program. In the final semester, two unique courses provide an opportunity for students to synthesize their knowledge. One course, Emergent Care Nursing, prepares nurses to meet the high demand for trauma care and intensive care in Laredo, the nation's busiest inland port. During this course, students gain competence in both Advanced Cardiac Life Support and the Trauma Nursing Core Curriculum. Clinical experiences include disaster preparedness and terrorism training prepare them to become the leaders of emergency nursing in Laredo. At the same time, students are enrolled in the other synthesis course, International Health Nursing, which challenges them to become active global citizens and advocates for "health for all."

ACCREDITATION

The BSN program has full accreditation from the Texas Board of Nurse Examiners and the NLNAC. The MSN program has initial approval from the Texas Board of Nurse Examiners, pending consideration for full accreditation upon graduation of the first class in December 2006.

PHILOSOPHY AND GOALS

- ❖ TEXAS A&M INTERNATIONAL UNIVERSITY
- ❖ CANSECO SCHOOL OF NURSING
- ❖ CONCEPTUAL FRAMEWORK
- ❖ PROGRAM OBJECTIVES

TEXAS A&M INTERNATIONAL UNIVERSITY MISSION STATEMENT

Texas A&M International University (TAMIU), a Member of The Texas A&M University System, prepares students for leadership roles in their chosen profession in an increasingly complex, culturally diverse state, national, and global society. TAMIU provides students with a learning environment anchored by the highest quality programs built on a solid academic foundation in the arts and sciences. To fulfill its mission, the University offers a range of baccalaureate and master's programs and the Doctor of Philosophy degree in International Business Administration. In addition to offering excellent undergraduate and graduate programs, the University pursues a progressive agenda for global study and understanding across all disciplines.

Through instruction, faculty and student research, and public service, TAMIU embodies a strategic point of delivery for well-defined programs and services that improve the quality of life for citizens of the border region, the State of Texas, and national and international communities

PHILOSOPHY OF THE SCHOOL OF NURSING

The Faculty believe that the School of Nursing of Texas A&M International University is in a unique position, as a result of geographic location and institutional affiliation, to prepare professional nurses to improve the well-being of complex and diverse populations. As an international city spanning the border between the United States and Mexico, Laredo (with its sister city Nuevo Laredo) offers a culturally, economically and politically unique setting in which health problems originating in either country merge as residents of Texas and Mexico live and work together. Faculty believe that professional nursing education must address a wide range of health beliefs in combination with dynamic political, social, economic and legal issues. The border setting provides students the opportunity to appreciate that people's health beliefs often vary in significant and meaningful ways, that solutions for health problems are defined by radically different health care contexts, and that measures for resolving or managing health problems are affected by economic and social value systems. Despite the complexities inherent in such an environment, the Faculty are convinced that this bicultural setting affords an ideal opportunity for students to learn to appreciate that clients are unique, worthy of respect, and capable of making their own life choices about matters of health and illness.

The Faculty believe that professional nurses have distinct educational needs and practice responsibilities. As adult learners, students enter the program with a foundation of knowledge and their own unique values, understandings and experiences. The Faculty believe that nursing education is a lifelong process that includes formal and informal components, and that teaching and learning are reciprocal activities during which faculty and students learn from each other. To effectively serve a diverse population and to address rapid changes in health care systems and treatment, nurses must develop critical thinking skills which will enhance creative and flexible problem solving within their own practice. The Faculty believe that diverse and changing health care needs can best be met by practice based on theory and research that is continually evaluating and modifying the standards of care. The Faculty of the School of Nursing are committed to educating outstanding clinicians, scholars, health advocates, mentors and leaders who will be instrumental in addressing the health care needs of communities. The Faculty believe that strong communication skills are essential to enactment of these roles, and that professional nurses must also be increasingly concerned with the ethical, legal, political and socioeconomic dimensions of their practice. The Faculty believe it is essential to promote the personal development and educational advancement of its students, to provide opportunities for research and creative expression, and to remain highly responsive through its educational program to the community. The Faculty believe that nurses graduating from this program will be instrumental in realizing the University mission of improving the quality of life for citizens of South Texas and nearby international communities.

Nursing is a learned and complex therapeutic process through which the nurse engages individuals, families, or communities for the purpose of meeting health needs. Nurses understand health and illness to be relative conditions of human existence involving intricate balances between life experiences and biological phenomena. To be effective in the nursing role, the nurse is required to develop, synthesize, and work from a broad framework based on the humanities and the social and biological sciences. Furthermore, the unique nature of nurse-client relationships is derived from a broad understanding of persons within their environments and the therapeutic use of self. Effective nurses design and implement innovative strategies that reflect caring through understanding, respect, appreciation, involvement, and advocacy.

Nursing roles and responsibilities in the 21st Century are likely to change significantly from nursing practice as we know it today. The current foundation of health information on which

nurses must base their practices is often unclear concerning how many health problems can be prevented. Until research can provide explanatory and predictive models on which to build effective preventive strategies, much nursing time and effort will continue to be devoted to caring for people with health problems and helping people either regain health status jeopardized by illness or adapt to significant, permanent changes in health. Although the present structure of the US health care system has dictated for decades that most of the nursing care provided to ill persons be delivered within institutional settings, current trends suggest that nurses will be increasingly involved in broader community-based health care models and systems. Institution-based care in the future will serve as a short-term, highly technical, and procedure-driven component of the larger community-based system. Nurses will be responsible for overseeing the health care of members of communities over prolonged time intervals. Demands for such changes in the nurses' role will require added emphases on analytic, education, leadership, and scholarship functions. It is also anticipated that nurses in the emergent health care system will need to provide and manage health care in ways that are cost effective, consumer-oriented, and likely to result in optimal health.

There are many challenges which lie ahead for professional nurses. Community-based health care, including care provided in hi-tech institutions, will have to be culturally appropriate and connected with persons at some very personal and intimate level to be effective. Nursing education in a border community presents opportunities for the advancement of nursing practice through the examination and exploration of concepts of culture and human caring.

CONCEPTUAL FRAMEWORK

The conceptual framework of the Canseco School of Nursing is portrayed as a pair of hands joined within a globe. The globe signifies the international context of the nursing program. The hands are joined in such a way that the individual fingers are intertwined and hidden within the clasp of the two hands.



At one level, the clasped hands represent the interaction between nurse and partner, be that client, community, family or other health care provider. In this interchange, the fingers of the two hands become so intertwined that it becomes difficult to determine which fingers derive from which hand.

At another level, the two hands represent the two foci of the curriculum: expertise in clinical nursing care and nursing in partnership with communities. Together these two capacities can effect dramatic changes in the world with which they interact.

The hand clasp can be loosened somewhat to reveal individual fingers that represent the strands of the nursing curriculum, as described by the nine curricular objectives: (1) a broad base of knowledge; (2) cultural competence; (3) critical thinking and the research process; (4) the nursing process; (5) health promotion; (6) professional nursing roles; (7) societal trends; (8) law and ethics; and (9) life-long learning.



The nine strands are defined within the context of the overall program philosophy of cultural diversity and community partnership, as follows:

- (1) **A broad base of knowledge** includes grounding in the natural and social sciences, the liberal arts as well as awareness of tradition and prior learning and experience in nursing.

- (2) **Transcultural nursing and cultural aspects of care** include awareness of individual and cultural variations in health status, human development, values, beliefs, attitudes, history and environment and how these differences affect the need for and acceptance of nursing care within a global context.
- (3) **Critical thinking** includes the use of problem solving, clinical judgment and the research process to apply appropriate principles for the resolution of ever changing societal and professional problems. It includes a search for structural causes of illness outside the narrow confines of a biomedical paradigm.
- (4) **The nursing process** involves planning, implementing and evaluating theory-based and culturally-appropriate nursing care in collaboration with individuals, families and communities. It requires an understanding of necessary linkages to other sectors and levels - i.e., state, regional, national, international.
- (5) **Health promotion** strategies incorporate the three modes of Transcultural nursing care (preservation, accommodation and repatterning) to promote health of individuals, families and communities within the limits of culturally acceptable behaviors.
- (6) **Professional nursing roles** of the baccalaureate nurse include those of provider of care, health care team member/collaborator, leader/manager, teacher, scholar, advocate, activist, mentor and entrepreneur.
- (7) **Societal trends** involve analysis of the impact of evolving socioeconomic and political forces on nursing practice and health care systems. Poverty is examined as a primary cause of illness.
- (8) **Legal and ethical principles** that guide professional nursing practice include analysis of the Texas Nurse Practice Act, standards of professional nursing and its specialty organizations, and the application of nursing codes of ethics and statutory and case law and acknowledgment of professional responsibility to strive for systemic change.
- (9) **Life long learning** is a manifestation of professional accountability that involves incorporation of updated knowledge of nursing and health care standards with ongoing service to and empowerment of the community.

SCHOOL OF NURSING

Program Objectives

During the course of studies, the student will have had opportunities to:

1. Synthesize knowledge from the arts, humanities, sciences, and other disciplines in developing a framework for nursing knowledge and practice.
2. Explore needs for nursing care as functions of variations in health status, developmental processes, values, beliefs and attitudes, history, and environment.
3. Use critical thinking, clinical judgment, problem-solving, and the research process in the development of nursing knowledge and practice.
4. Plan, implement, and evaluate theory-based and culturally-appropriate nursing care with individuals, families, and communities.
5. Synthesize health promotion strategies in the development of nursing practice.
6. Develop professional nursing practice frameworks and roles, including the provider of care, health care team member/collaborator, leader/manager, teacher, scholar, advocate, activist, mentor, and entrepreneur.
7. Evaluate the impact of evolving socioeconomic and political forces on nursing practice and health care systems.
8. Synthesize legal and ethical principles in the development of nursing practice.
9. Articulate a commitment to life-long learning, professional accountability, and community service.

Reaffirmed 2004

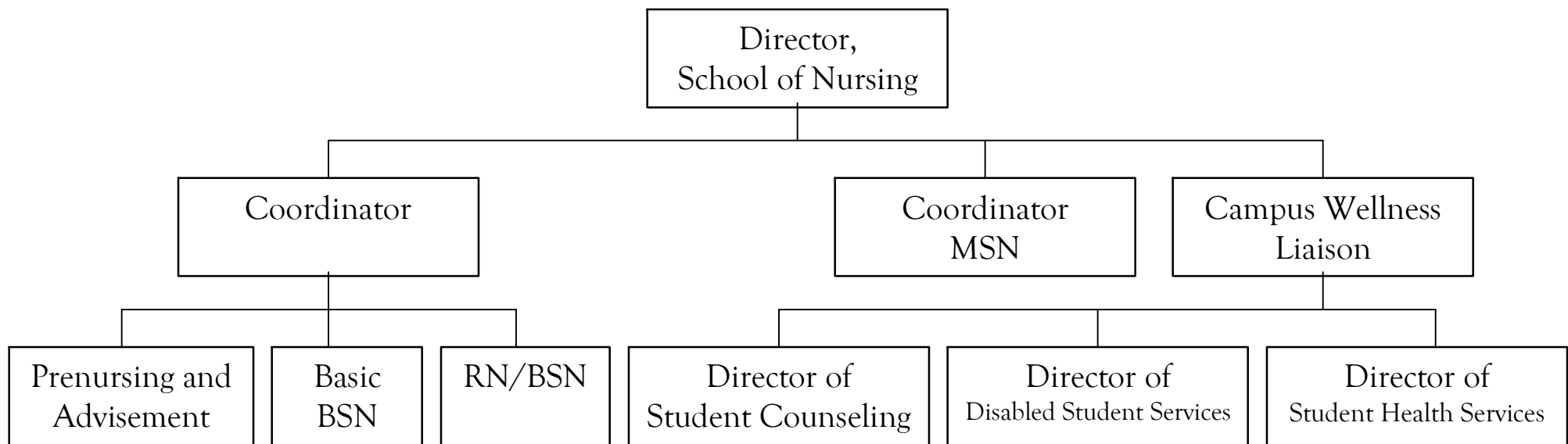
ORGANIZATIONAL STRUCTURE

- ❖ TEXAS A&M SYSTEM
- ❖ SCHOOL OF NURSING
- ❖ CAMPUS WELLNESS SERVICES
- ❖ NURSING FACULTY BYLAWS

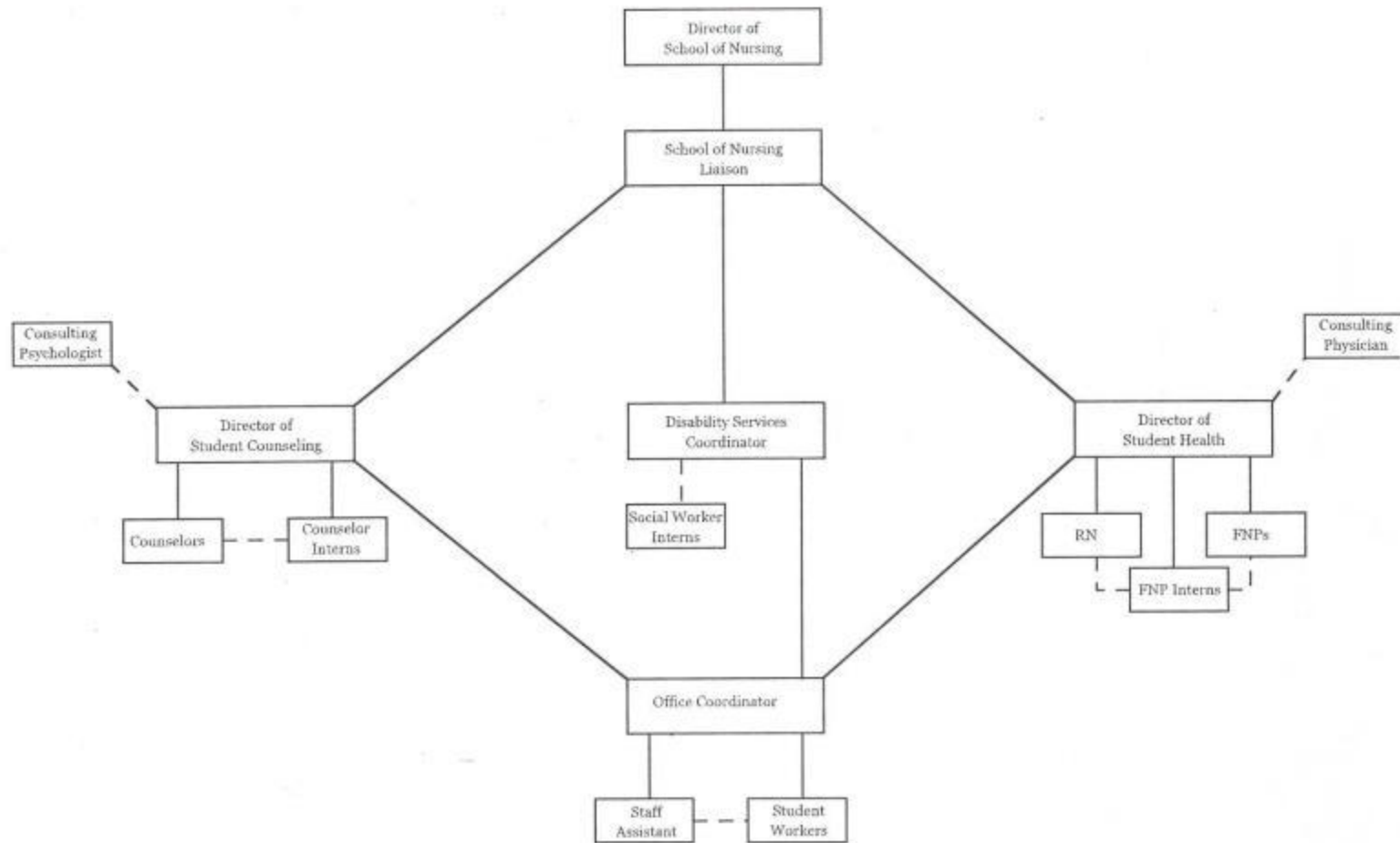
TEXAS A&M INTERNATIONAL UNIVERSITY

CANSECO SCHOOL OF NURSING

Organizational Chart



Proposed Organizational Chart Campus Wellness Services



By-Laws of the Canseco School of Nursing Faculty Organization
Revised 2004

ARTICLE I: NAME

The name of this organization is the Canseco School of Nursing Faculty Organization, hereinafter referred to as the Organization.

ARTICLE II: MISSION STATEMENT

The object of the organization is to promote excellence of the programs and activities of the Canseco School of Nursing.

ARTICLE III: FUNCTIONS

The functions of the organization shall be to:

1. Establish and implement the philosophy, purposes and objectives of the Canseco School of Nursing.
2. Establish and implement the curriculum content and sequence of the Nursing major.
3. Establish and implement nursing student admission, progression and graduation policies and practices.
4. Promote the rights and facilitate the responsibilities of Nursing faculty and students.
5. Improve the total programs in the Canseco School of Nursing through systematic evaluation and revision based on the Accreditation Criteria for baccalaureate and masters degree programs of the Texas Board of Nurse Examiners and of the National League for Nursing Accrediting Commission.
6. Arrange for facilities, resources and services needed to implement the curriculum.
7. Participate in the development of the annual School of Nursing budget.
8. Develop and maintain relationships with external agencies and organizations.
9. Participate in the recruitment and selection of faculty.
10. Develop and implement a plan for peer evaluation of teaching effectiveness.
11. Establish and monitor a university-wide nursing peer review plan.

ARTICLE IV: MEMBERSHIP

1. Active members, all full and part time nursing faculty: voice and vote privileges.
2. Associate members, one BASIC, one RN/BSN, and one MSN student representative: voice privilege.

ARTICLE V: OFFICERS

The officers of the Organization shall be the Chair and the Secretary.

1. The Director of the School of Nursing shall serve as Chair.
2. The Secretary shall be elected annually and will serve to review and approve the minutes.

ARTICLE VI: COMMITTEES

The Committees of the Organization shall consist of the following:

1. Curriculum and Evaluation

A. Function

1. Formulate, interpret and implement the nursing program curriculum.
2. Evaluate, on a systematic basis, all aspects of the curriculum and the resource services that support it.
3. Determine revisions needed in course content, objectives, clinical expectations, evaluation and teaching methods in relation to the total curriculum.
4. Recommend to the University administration, through the Director, necessary facilities, resources or services essential to the curriculum.

B. Membership

1. Undergraduate subcommittee
 - a. Three active members and one associate (student) member of The Nursing Faculty Organization.
 - b. Chair selected by the membership
2. Graduate subcommittee
 - a. Three active members and one associate (student) member of The Nursing Faculty Organization.
 - b. Chair selected by the membership

C. Meeting

1. Once each semester, spring and fall

2. Admissions, Progressions, Graduation and Scholarship

A. Function

1. Interpret and implement the policies established by the faculty for admission, progression, graduation and scholarship.
2. Review and revise the policies for admission, progression, graduation and scholarship in conjunction with evaluation of the total curriculum.
3. Plan and implement student recruitment initiatives.
4. Act on any admission, progression, graduation or scholarship decisions in instances where the established policy does not provide for the specific instance.
5. Recommend to the Chairperson the certification for graduation of all candidates for graduation with a nursing major. Associate members will be excused when individual decisions about students are made.
6. Recommend to the Director, names of candidates for scholarship/honors recognition as deemed appropriate by the Nursing Faculty Organization.

B. Membership

1. Undergraduate
 - a. Three active members and one associate (student) member of the Nursing Faculty Organization.
 - b. Chair selected by the membership
2. Graduate
 - a. Three active members and one associate (student) member of the Nursing Faculty Organization.
 - b. Chair selected by the membership

B. C. Meeting

At least once each semester, spring and fall

1. **Nursing Peer Review Committee**

A. Function

1. Evaluate nursing services, the qualifications of nurses, and the quality of patient care rendered by nurses or nursing students affiliated with the Canseco School of Nursing.
2. Evaluate the merits of complaints concerning nurses, student nurses, and nursing care.
3. Make determinations or recommendations regarding complaints.

B. Membership

1. Two permanent members and one rotating member elected each September by the Canseco School of Nursing faculty from the full time nursing faculty.
2. Permanent members will serve one-year terms and may be reelected.
3. Rotating member familiar with area of practice under review to be appointed as needed by permanent members.

C. Meeting

1. Committee will meet on as needed basis, initiated by any RN employed by TAMIU who has a concern needing to come before this committee.
2. A quorum shall require presence of all committee members.

ARTICLE VII: AMENDMENTS

These by-laws may be amended by a majority vote of the Canseco School of Nursing Faculty Organization.

Three active members and one associate (student) member of The Nursing Make.

BSN CURRICULUM

- ❖ DEGREE REQUIREMENTS
- ❖ COURSE DESCRIPTIONS
- ❖ CURRICULUM
- ❖ SEQUENCE OF COURSES
- ❖ CREDIT FOR PRIOR LEARNING
- ❖ THEORY & CLINICAL LABORATORY HOURS

DEGREE REQUIREMENTS

Hours Required: A minimum of 127 Semester Credit Hours (SCH): 45 hours must be advanced, and fulfillment of degree requirements as specified

University Core Curriculum: 41 Semester Credit Hours (SCH) as outlined in the suggested plans and as specified in the Graduation.
Wellness/Activity requirements met within nursing courses.

Social/Behavioral Science Elective: 3 SCH designated as:
PSYC [2314](#).

Other Education Requirements: 11 SCH including:
BIOL [2415](#)
CHEM [1406](#)
MATH [1342](#) .

Major: 72 SCH. Nursing courses for the Basic BSN include:

NURS [2310](#) Nutrition
NURS [2311](#) Pharmacology
NURS [2312](#) Foundations of Professional Nursing
NURS [2313](#) Basic Nursing Skills Lab
NURS [1302](#) Cultural Determinants of Health Behavior
NURS [3305](#) Nursing Research
NURS [3314](#) Pathophysiology
NURS [3315](#) Health Assessment
NURS [3558](#) Psychosocial Nursing
NURS [3625](#) Maternal Child Health Nursing
NURS [3665](#) Introduction to Adult Health Nursing
NURS [4290](#) Senior Lab Seminar
NURS [4375](#) Issues in Transcultural Nursing
NURS [4199 - 4799](#) Current Topics
NURS [4340](#) International and Border Health Nursing
NURS [4470](#) Comprehensive Emergent Care
NURS [4622](#) Community Health Nursing
NURS [4463](#) Leadership and Management in Nursing
NURS [4665](#) Advanced Adult Health Nursing .

Nursing courses for RN/BSN include:

NURS [3302](#) Cultural Determinants of Health
NURS [3305](#) Nursing Research
NURS [3314](#) Pathophysiology
NURS [3315](#) Health Assessment
NURS [3590](#) Nurse Role and Practice Transitions (RN/BSN only)
NURS [4375](#) Issues in Transcultural Nursing
NURS [4399](#) Current Topics
NURS [4340](#) International and Border Health Nursing
NURS [4463](#) Leadership and Management in Nursing
NURS [4470](#) Comprehensive Emergent Care
NURS [4622](#) Community Health Nursing

COURSE DESCRIPTIONS

NURS 1302 (Basic Nursing Program)/3302 (RN/BSN) *Cultural Determinants of Health Behavior.* Three semester hours, theory only.

This course examines relationships between cultural phenomena and health behavior. The meaning and expression of personal health behaviors are explored as consequences of family and community life set within developmental contexts. For both children and adults, the ways and conditions under which individuals define health status are explored. Cultural forces that enhance or reduce the capacity of individuals, families, or communities to maintain health are analyzed. Prerequisite: None..

NURS 2310 *Nutrition.* Three semester hours, theory only.

Life cycle nutrition is presented in conjunction with diet therapy principles. Nutritional assessments will include the influencing variables of culture, religion, economics, physiology, and medical regimen. Relevant research will be identified. Counseling and other interventions will be taught within the framework of the nursing process. (Advanced standing for RNs.)(Advanced standing for Registered Nurses).

NURS 2311 *Pharmacology.* Three semester hours, theory only.

Focuses on principles of pharmacology and drug classifications by body system; approaches clinical application of drug therapy through the nursing process. Nursing implications of drug therapy are emphasized and competency in dosage calculations is required. Regional and cultural variables affecting use of medications are discussed. (Advanced standing for Registered Nurses.)

NURS 2312 *Foundations of Professional Nursing.* Three semester hours, theory only.

This course provides the student with an organizing framework for defining professional nursing practice as a learned and complex therapeutic process through which the nurse engages individuals, families, or communities for the purpose of meeting health needs. Nursing philosophies are explored, with special emphasis given to interpretation of the influence of culture and caring on health. Processes deemed essential to professional nursing are emphasized, including informatics, critical thinking, nursing process, therapeutic communication and teaching-learning. Emerging nursing roles are examined within a historical and cultural context. The student is encouraged to consider a broad scope of roles in establishing a professional nurse identity with special attention to ecology, social justice, gender, and other ethical considerations. (Advanced standing for Registered Nurses.) Pre- or Co-requisites: Admission to Clinical Nursing, BIOL 2415 or 2421, CHEM, NURS 1302, NURS 2310, NURS 2311.

NURS 2313 *Basic Nursing Skills.* Three semester hours, clinical only (9 clock hours).

This three-credit hour laboratory and clinical course provides an introduction to the psychomotor skills involved in providing basic nursing care to a culturally diverse population. Students are exposed to a variety of psychomotor skills applicable to nursing and other disciplines; such as body mechanics, vital signs, patient transport, range of motion exercises, hot and cold therapies, stress management, hygiene, skin and wound care, and cardio-pulmonary resuscitation (CPR). In addition, through laboratory and clinical assignments students gain competence in nursing technique, including comfort measures, positioning and transporting, asepsis and sterile procedures, and therapeutic modalities related to preoperative and postoperative care. Students will be expected to apply critical thinking to their mastery of basic nursing skills. Opportunities for challenge exams available for currently licensed vocational or practical nurses with 2 years current

medical-surgical hospital nursing experience. (Advanced standing for Registered Nurses.) Co-requisite: NURS 2311, NURS 2312.

NURS 3314 *Pathophysiology*. Three semester hours, theory only.

This course is a comprehensive study of underlying concepts common to the major pathophysiologic processes of the body. The influence of psychoneuroimmunologic mechanisms upon structure and function of the body's adaptive and compensatory needs will be explored. The interaction of age, life-style, culture, gender differences, and intrinsic and extrinsic environmental factors will be examined in relation to these psychoneuroimmunologic mechanisms. Emphasis is placed upon the pathophysiological concepts essential for understanding the rationale for preventive and therapeutic nursing interventions. Prerequisites: NURS 2311, NURS 2312, NURS 2313 and all core requirements (for basic students). NURS 3590 for RN/BSN. A 2.5 GPA is required for all four science courses. Co-requisites: NURS 3315, NURS 3665

NURS 3315 *Health Assessment*. Three semester hours, laboratory only (6 clock hours).

This seminar and lab course builds upon the theoretical basis for physical, social, psychological, and cultural assessment of clients. The student applies knowledge of pathophysiology of each body system from health assessments to determine nursing diagnoses. Students compile a health history which includes an assessment of cultural values, health beliefs, and caring practices. Legal and ethical issues implicated in obtaining and managing health data are explored. Students practice in a supervised laboratory setting the procedural steps of a comprehensive health assessment. The importance of the professional nursing role in health assessment is examined. Prerequisites: NURS 2311, NURS 2312, NURS 2313, and all core requirements (for basic students). NURS 3590 for RN/BSN. A 2.5 GPA is required for all four science courses. Co-requisites: NURS 3314, NURS 3665.

NURS 3665 *Introduction to Adult Health Nursing*. Six semester hours, 3 theory, 9 clinical.

This six credit hour clinical course provides an introduction to culture specific caregiving for adult clients experiencing acute and chronic illnesses. An anatomical systems, adult life span approach will structure the course; critical thinking, research applications and professionalism are to be demonstrated. Diverse practice settings will be used for the 135 required hours of student clinical experience. (Advanced standing for Registered Nurses.) Prerequisites: NURS 2311, NURS 2312, NURS 2313 and all core requirements. Co-requisites: NURS 3314, NURS 3315.

NURS 3625 *Maternal/Child Health Nursing*. Six semester hours, 3 theory, 9 clinical.

This course focuses on clinical application of the nursing process in providing culturally specific care to childbearing women and to infants, children, adolescents and their family systems during the child rearing period. Clinical experiences in acute care and community/school based settings provide students with the opportunity to apply primary, secondary and tertiary prevention within childbearing, child rearing family-client systems and women's health across their life span. Critical thinking, health promotion, family-centered care and cultural diversity are stressed. Each content area (childbearing and child rearing) will be covered over a 7 week period with appropriate unit and final examinations and clinical rotations. In order for a student to pass the NURS 3625 course, the student will have to demonstrate mastery of each area with a test average of 75 and passing clinical experience. Students who cannot achieve these objectives will be required to repeat NURS 3625 in its entirety. (Advanced standing for Registered Nurses.) Prerequisites: NURS 3314, NURS 3315, NURS 3665. Co-requisite: NURS 4463.

NURS 3558 *Psychosocial Nursing*. Five semester hours, 3 theory, 6 clinical.

This clinical course focuses on culturally competent nursing care for persons experiencing alterations in mental health status, applying the nursing process with individuals, families and groups adapting to those alterations. Particular attention is given to cultural influences and caring psychosocial interventions in a variety of residential and community-based settings. Student competence in therapeutic communication, group process and the counselor role will be further developed. (Advanced standing for Registered Nurse students.) Prerequisites: NURS 3314, NURS 3315, NURS 3625, NURS 3665, NURS 4463. Co-requisite: NURS 3305.

NURS 3305 *Nursing Research*. Three semester hours, theory only.

Nursing research focuses on the introductory use of the research process in the development of nursing knowledge and practice. Steps in the research process are detailed. Research questions are explored with regard for theoretical underpinnings, methods of data collection and analysis, and the interpretation and use of study findings in the care of individuals, families and communities. Pre or Co-requisite: Statistics (Math 1342), NURS 3590 (RN/BSN), Co-requisite: NURS 3558 (Basic)

NURS 3590 *Nurse Role and Practice Transitions*. Five semester hours, three theory, six clinical.

This course provides the student with an organizing framework for defining professional nursing practice as a learned and complex therapeutic process through which the nurse engages individuals, families, or communities for the purpose of meeting health needs. The health needs of individuals, families and communities are examined within relevant theoretical contexts. Nursing philosophies are explored, with special emphasis given to the interpretation of the influence of culture and caring on health. Prerequisite: Admission to RN/BSN track, completion of all core requirements.

NURS 4199-4799 *Current Topics*. One - seven semester hours, theory and/or clinical.

An in-depth focus upon current issues impacting the profession of nursing and/or the health of society. May be repeated when topic changes. Open to all students with permission of the instructor.

NURS 4375 *Issues in Transcultural Nursing*. Three semester hours, theory only.

This course focuses on prominent national, state and local issues in nursing and health care. Key practice, education, and governance issues in nursing are examined in both historical and evolving contexts. Elements that determine the culture of nursing and health care organizations are considered with regard for inherent issues concerning the development of nursing roles. Students will explore political and legal foundations of the health care professions, the control of health care resources and decision making, and the rights and duties of providers and recipients of health care. Prerequisites: NURS 3314, NURS 3315, NURS 3665 or permission of instructor. Co-requisite: NURS 3625, NURS 4463.

NURS 4340 *International Health Nursing.* 3 semester hours, theory only.

This synthesis level course examines international problems and challenges within the context of current political-social-cultural-economic international realities. Looking at health and health care as a basic human right students will explore basic health-related concepts and trends within a global context. Immigration, socioeconomic conditions and environmental factors will be analyzed in relationship to border health. Special attention will be paid to the impact NAFTA and various "maquila" phenomena have had on border health, the profession of nursing and the future socioeconomic growth and/or development of the two Laredos. Prerequisite: NURS 4622 or permission of instructor.

NURS 4463 *Leadership and Management in Nursing.* Four semester hours, 2 theory, 6 clinical.

In this theoretical and experiential course, current theories of management and leadership are examined and related to nursing practice. Leadership is examined as a process which can be learned. The essential components of this process include the knowledge and skills for the effective use of power as a positive force in bringing about desired change and influencing health care. Critical thinking is used to develop innovative and creative approaches to nursing practice through clinically related applications. Management theories are compared and contrasted in relation to nursing management and the nursing process. Prerequisite: Basic: NURS 3314, NURS 3315, NURS 3590, NURS 3665; RN/BSN: NURS 3590. Co-requisite: NURS 3625, NURS 4375.

NURS 4470 *Comprehensive Emergent Care.* Four Semester Hours, 1 theory, 9 clinical.

This course focuses on the development of advanced nursing knowledge and skills in the acute care of high risk populations. Because students will have contact during the course with individuals and families from diverse cultural groups, health care problems and needs are examined with regard for the unique influences of divergent cultural, economic, and political forces. However, the emphasis of the course is on the mastery of competencies and confidence in the provision of direct nursing care to high risk individuals demanding emergent care. Prerequisites: Basic: NURS 4665 and consent of faculty: RN/BSN: NURS 3302, NURS 3590, NURS 3314, and NURS 3315, and all other degree requirements. Co-requisite: NURS 4290, Basic only.

NURS 4622 *Community Health Nursing.* Six semester hours, 3 theory, 9 clinical .

Community health nursing emphasizes the development of knowledge and skills integral to working with communities. Epidemiological principles will provide the framework for conducting community assessments. Students will work in mutuality with community groups to assess their health care needs, emphasizing the cultural and environmental contexts of health problems. In partnership with this group, students will examine the entire range of health needs and resources (folk and traditional) available within this community, identify strengths and weaknesses of those resources, and work in partnership with the community to address its felt needs. Prerequisites: NURS 3302, NURS 3314, NURS 3315, NURS 3590, NURS 3665. Pre- or Co-requisite: NURS 3305, NURS 4665.

NURS 4665 *Advanced Adult Health Nursing.* Six semester hours, 3 theory, 9 clinical.

This course offers expanded knowledge based on clinical experiences in acute care settings. The focus of the course is providing culturally congruent comprehensive nursing care to adults with multi-system and complex health care needs. Post conferences will coordinate clinical experience with theory-based practice and ethical and legal ramifications. During the 135 required hours of clinical practice, students will be introduced to the nurse's professional, provider and coordinator of care roles. (Advanced standing for Registered Nurses.) Prerequisites: NURS 3305, NURS 3314, NURS 3315, NURS 3558, NURS 3665. Co-requisite: NURS 4622.

NURS 4290 *Senior Lab Seminar.* Two semester hour, laboratory only (6 clock hours).

This laboratory course provides in-depth diagnosis of mastery and reinforcement of all curricular content in basic nursing knowledge and skills. Critical thinking is used to apply the nursing process to plan and evaluate culturally based care for individuals, families and groups across the life span experiencing alterations in physical and psychosocial health. Computer assisted instruction and standardized testing are used to evaluate student readiness for professional licensure and practice. Successful completion of course requirements includes satisfactory performance on a nationally recognized standardized readiness evaluation instrument. (Advanced standing for Registered Nurses.) Co-requisites: NURS 4340, NURS 4470. Prerequisite: All other degree requirements.

Texas A&M International University
 Canseco School of Nursing
 Curriculum: Basic Bachelor of Science in Nursing
 2006-2007

Pre Nursing Coursework

FALL		SPRING		SUMMER	
FRESHMAN					
English I	3	English II	3	English III	3
Anatomy/Physiol. I	4	Anatomy/Physiol. II	4	Math II - Statistics	3
Math I - College Algebra	3	Life Span Growth and Development	3	Gov't. I	3
Psychology	3	Cultural Determinants	3	History I	3
Total	13	Total	13	Total	12
SOPHOMORE					
Gov't. II	3	<u>Start Clinical Nursing Coursework</u>		Fine Arts	
Chemistry	4	<u>FOR Students admitted Spring 2007</u>	4	Speech/Writing	3
Nutrition	3	Microbiology	3		3
History II	3	Pharmacology	3	Total	6
		Foundations Prof. Nsg.	3		
		Skills Lab			
Total	13	Total	13		
JUNIOR					
Pathophysiology	3	Maternal/Child Health Nsg.	6	Psych. Mental Health	5
Health Assessment	3	Leadership/Mgmt	4	Research	3
Adult Health I	6	Issues	3	Nursing Elective	3
Total	12	Total	13	Total	11
SENIOR					
Adv. Adult Health	6	Border Health	3		
Community Health	6	Emergent Care	4		
Total	12	Senior Lab Seminar	2		
		Total	9		

Texas A&M International University
 Canseco School of Nursing
Curriculum: Basic Bachelor of Science in Nursing
2006-2007

Pre Nursing Coursework

FALL		SPRING		SUMMER	
FRESHMAN					
English I	3	English II	3	English III	3
Anatomy/Physiol. I	4	Anatomy/Physiol. II	4	Math II - Statistics	3
Math I - College Algebra	3	Fine Arts	3	Gov't. I	3
Psychology	3	Cultural Determinants	3	History I	3
Total	13	Total	13	Total	12
SOPHOMORE					
Gov't. II	3	<u>Start Clinical Nursing Coursework</u>			
Chemistry	4	Microbiology	4		
Nutrition	3	Speech	3		
History II	3	Foundations Prof. Nsg.	3		
		Skills Lab	4		
Total	13	Total	14		
JUNIOR					
Pathophysiology	3	Childbearing Newborn Nursing	5	Psych. Mental Health	5
Health Assessment	3	Child Health Nursing	5	Research	3
Adult Health I	6	Issues in Nursing Mgmt.	3	Total	8
Total	12	Total	13		
SENIOR					
ADV Adult Health	6	Border Health	3		
Community Health	6	Emergent Care	5		
Total	12	Senior Lab Seminar	2		
		Total	10		

SEQUENCE OF COURSES FOR RN/BSN PLAN

Registered Nurse students are admitted in the Spring semester on a space available basis and upon completion of all core coursework. Students are responsible for reviewing the Program of Study Requirements and the requirements of the Dr. F.M. Canseco School of Nursing.

SOPHOMORE YEAR

SPRING	CREDITS
NURS 3590 Nurse Role & Practice Transitions	5
NURS 3302 Cultural Determinants	3
	8

JUNIOR YEAR

FALL	CREDITS
NURS 3314 Pathophysiology	3
NURS 3315 Health Assessment	3
	6
SPRING	CREDITS
NURS 4463 Leadership & Mgmt in Nursing	4
NURS 4375 Issues	3
	7
SUMMER	CREDITS
NURS 4399 Current Topics	3
	3

SENIOR YEAR

FALL	CREDITS
NURS 3305 Nursing Research	3
NURS 4622 Community Health Nursing	6
	9
SPRING	CREDITS
NURS 4340 International Health Nursing	3
NURS 4470 Comprehensive Emergent Care	4
	7

CREDIT FOR PRIOR LEARNING

TRANSFER APPLICANTS

Transfer applicants must meet the same academic criteria for admission to Clinical Studies as stipulated above for pre-clinical students. Admission is competitive and contingent on available space. Applicants must meet all admission requirements of the University, and in addition, must meet the following criteria:

1. Accepted into the school of nursing on space available basis only.
2. Have a GPA of 2.5 overall on all previous required nursing course work.
3. Have four hours required science courses within the last 5 years with a GPA of 2.5.
4. Pass the HESI entrance exam with a predictive score of 75% or greater on each of the required areas.
5. Have completed all previous nursing course work within the previous 3 years.
6. Meet all other university requirements for transfer and be eligible for a degree from TAMIU.
7. Verification of drug and criminal background screening by a designated company or agency at student expense.

Criteria for acceptance of transfer work is as follows:

1. Courses taken in pharmacology and nutrition will be evaluated for course transferability.
2. Courses in foundations and skills will be evaluated for course compatibility with the SON, credit may be given for foundations and skills if grade is C or better.
3. Introductory medical surgical/adult health nursing, pediatric nursing, mental health nursing, and maternity nursing (if previously taken) must be validated by an exit exam required by the SON for all nursing students. A predictive score of 75% or better is considered passing.

Registered Nurse Students

All RN/BSN students are transfer students. The need 60 semester credit hours to be admitted junior status at TAMIU. Negotiated articulation plans with neighboring community college A.D.N. programs and challenge exams such as NLN Mobility Profile II are used to grant college credit. Because of its international character, TAMIU also attracts foreign nurses who wish to pursue a baccalaureate degree. TAMIU already has extensive experience with foreign students and has policies for them, as described in the TAMIU catalog.

THEORY AND CLINIC LABORATORY HOURS

Credit hour allocation follows the standard university ratio of one semester credit hour for one clock hour of class time and one semester credit hour for every three clock hours of clinical experience. One course, NURS 3315 Health Assessment has a ratio of two clock hours of intensive laboratory experience to one course credit. The reason for a different ratio for this health assessment laboratory is the intensity of the clinical laboratory experience in contrast to a field clinical experience.

Nursing is a practice discipline, requiring substantial hands-on clinical experience in support of classroom learning. Beginning students require more background classroom learning and supportive laboratory instruction, whereas advanced students require increased hours of clinical field experience in preparation for transition to the nursing workplace.

FACILITIES

- ❖ OFFICES AND CLASSROOMS
- ❖ LIBRARY
- ❖ INTERNATIONAL LANGUAGE INSTITUTE
- ❖ COMPUTER FACILITIES AND SERVICES
- ❖ CLINICAL SITES

OFFICES AND CLASSROOMS

The School of Nursing is located in Canseco Hall (CH), on the East side of the TAMIU campus. The main office of the School of Nursing and that of the Director are in CH 315 and the Graduate Program coordinator's office is in CH 312. Teaching laboratories, classrooms, and the computer laboratory are located on the first floor of the building.

KILLAM LIBRARY

The Sue and Radcliffe Killam Library at Texas A&M International University in Laredo is a fully automated library facility constructed in 1995. The library occupies the eastern side of the four-floor Sue and Radcliffe Killam Library building. Book holdings are 197,980 titles in 230,000 volumes. The library subscribes to 1,405 print subscriptions in paper and microfilm, of which 61 relate directly to Nursing and the Biomedical Sciences. The library also has access to over 6,300 additional titles electronically through ProQuest Direct, Science Direct, IDEAL, Academic Universe, TexShare, the Health Reference Center, CINAHL and other databases.

Reference librarian services are available, as well as interlibrary loan services, government documents, and GPS access. Detailed information on library services is available on the university web site (<http://library.tamiu.edu>) or by telephone (956)326-2400. Library hours are generally Monday-Thursday 7:30 am – 10 pm, Friday 7:30 am – 5 pm, Saturday 10 am – 6:30 pm and Sunday 12 pm – 8 pm.

The Killam Library is automated using the Voyager integrated online system for online catalog, circulation, cataloging, acquisitions, and serials. Through the Internet, library patrons can access the online catalogs of other Texas A&M University system libraries for interlibrary loan purposes. The library subscribes to both the OVID and the ProQuest Direct versions of Periodical Abstracts Research II and ABI/Inform. It also provides online access to PsycInfo, First Search, Health Reference Center (full text), Science Direct, IDEAL, Academic Universe's Health and Medicine News and Health and Medicine journals, Medline, PreMedline, the Nursing Research Collections I and II, the New York Times, the Wall Street Journal, The Christian Science Monitor, the Washington Post, College Source online, the TexShare Gale databases, ERIC, MLA Bibliography, JSTORE, Books in Print, and Marcive among others. A complete list of databases can be found in the following URL: <http://www.tamiu.edu/library/hot-link.htm>

All databases available through Killam library can be accessed both from any computer on campus and from home if you are affiliated with Texas A&M International University.

In CD ROM, the library subscribes to the New York Times, the Wall Street Journal, ERIC, CINAHL, LILACS, the Grolier and Britannica multimedia encyclopedias, and Artemisa. The Texas USMTR/NAFTA Information Center supplies the library with access to their home-grown NAFTA database. The library also has full access to the Internet, and over 450 databases through Knight Ridder's Dialog, which includes 49 databases in the categories of medicine, bioscience, and the health care industry).

Database Descriptions

The *Health Reference Center* database is produced by IAC and uses the Infotrac search engine. It includes indexing and full text of over 364,824 articles from 1996 - present (last update Oct 6, 2000). Subject coverage includes: Fitness, Pregnancy, Medicine, Nutrition, Diseases, Public Health, Occupational Health & Safety, Alcohol and Drug Abuse, HMO's Prescription Drugs, etc. We access the Health Reference Center through any Internet browser at: <http://web2.infotrac.galegroup.com/itw/session/>.

The *Medline* database is produced by the National Library of Medicine and uses the National Library of Medicine search engine. It includes indexing and abstracts of more than 11 million articles from over 4,000 journals published in the United States and 70 other countries from 1965 - present, plus selected monographs of congresses and symposia. Subject coverage includes: medical and biomedical information, the biological and physical sciences; humanities and information science as they relate to medicine and health care. We access Medline through the Internet at: <http://www.ncbi.nlm.nih.gov/pubmed/>

The *CINAHL database* (Cumulative Index to Nursing and Allied Health Literature) is produced by Cinahl Information Systems and uses the WinsPirs search engine. It provides authoritative coverage of the literature related to nursing and allied health disciplines. It includes more than 300,000 records from over 950 English-language journals as well as references to healthcare books, nursing dissertations, selected conference proceedings, standards of professional practice, educational software, nurse practice acts, critical paths, and research instruments. It also includes virtually all publications of the American Nurses' Association and the National League for Nursing. It covers relevant material from Biomedicine, management, behavioral sciences, health science librarianship, education, and consumer health. The library accesses the CINAHL through the Internet at:
<http://webspirs3.silverplatter.com/cgi-bin/customers/c122909/c122909.cgi>

The **Nursing Collection I** uses the Ovid search engine, and provides full text access, including all graphics, tables, figures and photographs, to the following 14 nursing journals: Advances in Nursing Science, AJIC (American Journal of Infection Control), AORN Journal, Dermatology Nursing, Heart & Lung, Image Journal of Nursing Scholarship, Journal of Advanced Nursing, Journal of Clinical Nursing, Journal of Emergency Nursing, Nurse Researcher, Nursing & Health Care Perspectives on Community, Nursing Management (RCN Publication), Nursing Standard, and RN. Current coverage 1995 to present, updated monthly. The Nursing Collection I can be accessed at:
<http://www.texshare.edu/ovidweb/ovidweb.cgi?T=dbList&D=nurc&S=PHMKBKJPGEDIKK>

The **Nursing Collection II** also uses the Ovid search engine, and provides full text, including all graphics, tables, figures and photographs, to the following additional 14 nursing journals: AWHONN Lifelines, American Journal of Nursing, Cancer Nursing, Computers in Nursing, JONA Journal of Nursing Administration, JNSD Journal of Nurses in Staff Development, JOGNN Journal of Obstetric, Gynecologic, and Neonatal Nursing, Journal of

Intravenous Nursing, Lippincott's Primary Care Practice, MCN, the American Journal of Maternal/Child Nursing, Nurse Educator, Nursing Case Management, Nursing Research, and Outcomes Management for Nursing Practice. Current coverage 1996 to present updated monthly. The Nursing Collection I can be accessed at:
<http://www.texshare.edu/ovidweb/ovidweb.cgi?T=dbList&D=nc2&S=PHMKBKJPGEDIKK>

Lilacs is a database on CD ROM produced in Brazil by the Latin American and Caribbean Health Sciences Information Center (BIREME). *Lilacs* (Latin American and Caribbean Literature on the Health Sciences) covers literature related to the health sciences and has been published in countries of the Region since 1982. It contains articles from about 670 of the most well-known journals in medicine field, reaching approximately more than 150,000 records and other documents, such as: theses, chapters of theses, books, chapters of books, congress and conference proceedings, technical and scientific reports and governmental publications.

Artemisa is a database on CD ROM produced in Mexico by the National Health Information and Documentation Center (CENIDS). It is updated on an annual basis. It contains the full text articles of the 28 most relevant Mexican biomedical journals.

One of the most recent database services added in Killam Library is ScienceDirect, which includes the image and full text of thousands of journals.

THE INTERNATIONAL LANGUAGE INSTITUTE

The International Language Institute (ILI) offers intensive language instruction in English and Spanish as a foreign language. This program is designed to meet the needs of individuals interested in preparing for social/professional growth in either language or for those preparing for academic course work in the United States. The ILI offers six intensive levels of English as a Second Language (ESL). These courses are given in intensive format (2 months) or the semi-intensive format (4 months). Each course consists of a TOEFL Preparation Course to prepare students for either the International or Institutional TOEFL. The Michigan Placement Test is used to evaluate student level.

COMPUTER FACILITIES AND SERVICES

The School of Nursing has adequate and up-to-date computer hardware and software resources. All faculty offices have a computer and printer, with direct on-line access to the Internet and a variety of computer based services, both within the School of Nursing and the University. School of Nursing faculty can access Killam Library services from their offices, including CINAHL (the online Cumulative Index of Nursing and Allied Health) and are directly connected with the rest of the University's 400 staff and faculty computers through e-mail.

There are over 300 student computers on campus, in eight computer laboratories in four buildings, giving a student: computer ratio of 10:1. Computers are available to students 90 hours a week over all seven days. In the School of Nursing there is a computer laboratory with 48 computers. In addition, an adjacent room presently designated for group study is designed for future expansion of computer laboratory facilities in the School of Nursing. The Computer Laboratory of the School of Nursing is used for a variety of computer-assisted tutorials as well as giving students access to the Internet, e-mail and word-processing for the preparation of reports and projects. All computers are networked through fiberoptics building-to-building and floor-to-floor. All students can have e-mail accounts and over half of the 5,000 students at Texas A&M International actually do have e-mail accounts.

The School of Nursing has access to telecommunications links to the School of Nursing of the University of Texas Health Science Center at San Antonio and to the Texas A&M University System. These resources increase student and faculty opportunities for collaboration and enrichment.

Support staff for computer education, troubleshooting and repairs are available within the School of Nursing and from the University. All staff are knowledgeable about computer utilization, with varying levels of expertise. Specialized knowledge and skills are available from the University Office of Instructional Technology.

CLINICAL SITES

**Inpatient Facilities
Hospitals**

Laredo Medical Center
Border Region MHMR
Doctors Hospital of Laredo
San Antonio State Hospital (MHMR)
Providence Hospital
Laredo Specialty Hospital
Ben Taub Hospital Trauma Center
(through affiliation with Prairie View
A&M)

Long Term Care Facilities

Border Region MHMR
Retama South LTC

Community-Based Settings

Mercy Ministries Primary Care
Colonias Project, community clinics, Child Care,
etc.
Border Region MHMR outreach
Gateway Community Health Center
City of Laredo Health Department
Laredo Independent School District
United Independent School District
City of Laredo Fire Department
Cowl Rehabilitation Center
City of Laredo Employee Health

STUDENT LIFE

- ❖ RIGHTS AND RESPONSIBILITIES
- ❖ ACADEMIC HONESTY
- ❖ STUDENT HEALTH
- ❖ STUDENT CHEMICAL
ABUSE/DEPENDENCY/IMPAIRMENT POLICY
- ❖ CLINICAL GUIDELINES
- ❖ STUDENT ORGANIZATIONS
- ❖ STUDENT FACULTY COMMUNICATION
- ❖ FINANCIAL AID OPPORTUNITIES

RIGHTS¹

1. Students should be encouraged to develop the capacity for critical judgment and engage in a sustained and independent search for truth.
2. The freedom to teach and the freedom to learn are inseparable facets of academic freedom: students should exercise their freedom with responsibility.
3. Each institution has a duty to develop policies and procedures which provide and safeguard the student's freedom to learn.
4. Under no circumstances should a student be barred from admission to a particular institution on the basis of race, creed, sex, or marital status.
5. Students should be free to take reasoned exception to the data or views offered in any course of study and to reserve judgment about matters of opinion, but they are responsible for learning the content of any course of study for which they are enrolled.
6. Students should have protection through orderly procedures against prejudiced or capricious academic evaluation, but they are responsible for maintaining standards of academic performance established for each course in which they are enrolled.
7. Information about student views, beliefs, and political associations which instructors acquired in the course of their work should be considered confidential and not released without the knowledge or consent of the student.
8. The student should have the right to have a responsible voice in the determination of the curriculum.
9. Institutions should have a carefully considered policy as to the information which should be a part of a student's permanent educational record and as to the conditions of this disclosure.
10. Students and student organizations should be free to examine and discuss all questions of interest to them, and to express opinions publicly and privately.
11. Students should be allowed to invite and to hear any person of their own choosing, thereby taking the responsibility of furthering their education.
12. The student body should have clearly defined means to participate in the formulation and application of institutional policy affecting academic and student affairs.
13. The institution has an obligation to clarify those standards of behavior which it considers essential to its educational mission and its community life.
14. Disciplinary proceedings should be instituted only for violations of standards of conduct formulated with significant student participation and published in advance through such means as a student handbook or a generally available body of institutional regulations. It is the responsibility of the student to know these regulations. Grievance procedures should be available for every student.
15. As citizens and members of an academic community, students are subject to the obligations which accrue them by virtue of this membership and should enjoy the same freedoms of citizenship.
16. Students have the right to belong or refuse to belong to any organization of their choice.
17. Students have the right to personal privacy in their living space to the extent that the welfare of others is respected.
18. Adequate safety precautions should be provided by schools of nursing, for example, to and from student dorms, adequate street lighting, locks, etc.
19. Dress code, if present in school, should be established by student government in conjunction with the school director and faculty, so the highest professional standards possible are maintained, but also taking into consideration points of comfort and practicality for the student.

¹The Student Bill of Rights and Responsibilities was adopted by the NSNA House of Delegates in April 1975

20. Grading systems should be carefully reviewed periodically with students and faculty for clarification and better student-faculty understanding.

STUDENT RESPONSIBILITIES²

Students should assume responsibility for:

1. Representative participation in curriculum development by:
 - attending all scheduled meetings
 - preparing ideas, comments, reactions, and suggestions
 - sharing ideas, comments, reactions, and suggestions
 - polling students for their views, comments, reactions, and suggestions
 - formulating mechanisms to increase input
 - following through with assignments regarding curricular activities
 - developing jointly with faculty policies for grading, promotion, and retention

2. Participation in curriculum implementation by:
 - attending classes
 - following through with class and laboratory assignments
 - preparing in advance of scheduled classes and laboratory sessions
 - maximizing all learning opportunities
 - resisting a focus limited to minimal achievement
 - sharing learning experiences with peers
 - striving constantly to broaden their general education base
 - transferring previous learning
 - fostering effective relationships with members of the interdisciplinary health team
 - abiding by the established policies and procedures
 - assuming responsibility for their own learning experiences
 - seeking out new and different learning experiences
 - finding opportunities for decision making, independent judgment, and self-direction
 - operationalizing the philosophy and conceptual frameworks
 - contributing to research and scholarly activities.
 - preparing one's own projects, papers, thesis, dissertation, and other assignments
 - maximizing learning through independent study

3. Participation in the evaluation of the curriculum by:
 - appraising self in relation to stated course, level, and end-of-program behavioral expectations
 - appraising faculty in relation to their facilitation of the meeting of stated course, level and program goals

²Adopted from the NLN publication by Dorothy Ozimek and Helen Yura. [Students Have Responsibilities as Well as Rights](#)

ACADEMIC HONESTY

The highest standards of academic honesty are expected of the student. Wilson (1985) succinctly described plagiarism in Research in Nursing:

Plagiarism and paraphrasing. Plagiarism means to steal and pass off the work of another as one's own. It usually results from bad paraphrasing or improper referencing. Both paraphrasing that merely substitutes a few word changes for those of the original author and forgetting to use quotation marks and a reference citation are technically considered plagiarism, even if you somehow hypnotize yourself into thinking that those really were your own words to express your own ideas. The only safe way to paraphrase is to read the original over several times and then write your conception of what you've read without looking at the original. In other words, when paraphrasing, keep the source book closed.(p.523)

STUDENT HEALTH

ADMISSION REQUIREMENTS

Application to the School of Nursing includes evidence of current rubella, varicella, and TD immunization, PPD, mantoux or chest X ray, Hepatitis B vaccines or signed informed refusal, and physical exam certifying good health/no restrictions.

OSHA REQUIREMENTS

An employee should:

- < Read the OSHA poster at the jobsite.
- < Comply with all applicable OSHA standards.
- < Follow all employer safety and health regulations, and wear or use prescribed protective equipment while working.
- < Report hazardous conditions to the supervisor.
- < Report any job-related injury or illness to the employer, and seek treatment promptly.
- < Cooperate with the OSHA compliance officer conducting an inspection if he or she inquires about safety and health conditions in the workplace.
- < Exercise rights under the Act in a responsible manner.

DRUG, ALCOHOL, TOBACCO & FIREARM POLICIES

Refer to Texas A&M International University's Student Handbook.

NURSING STUDENT CHEMICAL ABUSE OR DEPENDENCY POLICY

A. Purposes

1. To comply with the reporting requirements of the “Nurse Practice Act,” Texas Revised Civil Statutes Annotated, Section 301.452:
2. To provide a program for educating students and faculty regarding professional and personal problems associated with chemical abuse or dependency.
3. To encourage a student who abuses or becomes dependent upon chemicals to contact the University Student Health Service for evaluation, advice, and referral to a qualified counseling or rehabilitation service, if appropriate.
4. To provide an environment that supports and encourages a student who has successfully completed recommended counseling or rehabilitation program to return to the School of Nursing and complete academic work.

B. Reporting Requirements

Pursuant to the “Nurse Practice Act,” any Registered Nurse associated with Texas A&M International University, either as an employee or a student in the Canseco School of Nursing, who has reasonable cause to suspect that the ability of any professional nursing student to perform the services of the nursing profession may be expected to be impaired by chemical abuse or dependency must take one of the following actions:

- (1) Submit a signed, written report to the Texas Board of Nurse Examiners identifying the student and provide any additional information required by the Board; or
- (2) Report the student to a member of the faculty of the Director of the Canseco School of Nursing.

Pursuant to the law, if the Canseco School of Nursing has reasonable cause to suspect the ability of a professional nursing student to perform the services of the nursing profession may be expected to be impaired by chemical abuse or dependency, representatives of the School of Nursing must submit a signed, written report to the Board of Nurse Examiners identifying the student and providing any additional information required by the Board.

C. School Committee on Chemical Abuse and Dependency

1. The Canseco School of Nursing Peer Review Committee will serve to review reports of student nurse chemical abuse or dependency. In such cases, committee membership will include representation of the TAMIU student health services.
2. In the development and implementation of the program, the Committee will utilize the existing services, facilities, and personnel of the University and will not duplicate such services or facilities, in whole or in part, within the School of Nursing.

D. Status of a Student Who Enters a Counseling or Rehabilitation Program

1. A Student who enters a counseling or rehabilitation program for chemical abuse or dependency must inform the Director of the School of Nursing and authorize the professional responsible for the student's counseling or rehabilitation program to provide the Peer Review Committee.
 - a. the nature, severity, and prognosis of the student's problem
 - b. periodic reports concerning the student's progress and
 - c. a final report indicating whether the program was successfully completed and assessing the student's ability to avoid future abuse of chemicals.
2. Upon receipt of initial information, the Committee will recommend to the Director whether the student should continue in the nursing curriculum while participating in a counseling or rehabilitation program or should be withdrawn from the program.
3. A student who is withdrawn from the nursing program pending successful completion of a counseling or rehabilitation program must apply for readmission. The Committee will review the final report form the professional who was responsible for the student's program and recommend to the Director whether the student should be readmitted.
4. If the Committee recommends that a student should continue in the nursing curriculum while participating in a counseling or rehabilitation program or that a student who has been withdrawn should be readmitted after successful completion of such a program, the Committee will include in the recommendation any restrictions or conditions that will apply to the student's future participation in the nursing curriculum. The student's participation in the nursing curriculum will be conditioned upon the written agreement of the student to comply with such restrictions or conditions. The restrictions or conditions may not be the type that are authorized as student disciplinary penalties.

5. The Committee will be responsible for determining whether a student complies with the restrictions or conditions established for participation in the nursing curriculum. The Committee will inform a student of any allegations that he or she has failed to comply with such terms and conditions and will meet with the student and hear his or her response. If the Committee determines that the allegations are true, the Committee may impose additional restrictions or conditions or recommend to the Director that the student be withdrawn.
6. The decision of the Director regarding all recommendations of the Committee is final.
7. Participation in a counseling or rehabilitation program for chemical abuse or dependency will not be considered as a mitigating factor in determining whether a student meets the performance standards for the nursing curriculum.

E. Office of Associate Vice President for Student Life

The Director of the School of Nursing is responsible for informing the Associate Vice President for Student Life when any student is participating in a counseling or rehabilitation program for chemical abuse or dependency. The AVPSL will take such actions as may be appropriate under the circumstances.

TPAPN

The purpose of TPAPN is to identify and assist Licensed Vocational Nurses and Registered Nurses of Texas whose ability to provide nursing services has been impaired by chemical dependency or mental illness so that they can return to competent practice and be a useful member of the profession. Emphasis of the program is on education, advocacy, and opportunity as opposed to punitive action against the nurse. All aspects of the program are conducted with compassion, dignity, and confidentiality.

TPAPN helps provide referral, support, and monitoring services to nurses whose ability to practice nursing has been impaired by chemical dependency or mental illness. TPAPN also assists the employers of such nurses. For additional information, contact the office of the Director of the School of Nursing or call TPAPN at 1-800-288-5528.

REPORT FORM- REPORTING RN/LVN/ NURSING STUDENT TO PEER REVIEW COMMITTEE

1. Nurse Being Reported (Please provide the following information about the Nurse being reported.)

Name: _____ Phone Number: _____
RN _____ LVN _____ Student: _____ Position: _____

2. Incident Being Reported (Describe briefly. Do not use patient's name. Please indicate dates. If more space is needed, use additional sheets.)

Date: _____ Time: _____
Location: _____
Summary: _____

3. Witness (Identify other persons who have information about the incident/conduct.)

4. Minor Incident

Do you consider the incident to be minor? If so, why?

5. Chemical Dependency or Mental Illness

Do you suspect the nurse's behavior is related to chemical dependency or mental illness?

Dependency _____ Mental Illness _____ Neither _____

6. Report to BNE/BVNE (Optional: It is not required that this section be completed.)

Have you ever reported the incident to the BNE/BVNE? No _____ Yes _____ Date: _____

7. Person Making Report (Provide the following information about yourself.)

Name: _____
RN _____ LVN _____ Lic. # _____ Other: _____
Phone Number: _____ Position: _____

CLINICAL GUIDELINES

Nursing courses include a variety of clinical activities. Some of these will involve independent application of the theoretical content to the nurse's own practice. Other clinical activities will involve diverse settings in the community.

The purpose of the clinical experience is to provide an opportunity to integrate theory and practice. Students will be placed in a variety of agencies where they will focus on specific activities as indicated by specific clinical assignments. You are reminded that at all times you are in an assigned clinical area you represent the School of Nursing at Texas A&M International University to the agency and to the community.

Attendance during assigned clinical hours is mandatory. The only reason for an absence is an unavoidable emergency. If, for any reason, you must be absent from the clinical, you are required to call the instructor, preferably 24 hours in advance. You may leave a message, but continue to call until you are sure the instructor has received your message. You are also responsible for notifying the clinical agency that you will be absent. Clinical absences will be made up at the discretion of the clinical instructor and generally on a 2:1 basis.

When you are in the student role you must remain in the student role; do not perform clinical skills unless they are part of your student assignment. To help others respect your role boundaries, you will purchase a student name tag. The name tag can be purchased at the campus bookstore. The background is to be maroon and the letters white. The name tag is to read as follows:

First Initial. Last name, (RN if applicable) TAMIU Nursing Student

At all times you are in the student role you are expected to dress in a professional manner. Be sure to check with clinical faculty for appropriate dress guidelines for clinical setting. Avoid perfume or cologne, because they frequently provoke allergic reactions. Hair should be neat, clean, and no more than collar length and carefully styled away from your face. One pair of small, non-dangling earrings and one small ring may be worn; neck chains should be avoided.

Bring only items necessary to the clinical setting (paper, pen, guidelines, etc.). Leave purses and all valuables or bulky items safely at home. Wear clothing that will allow you to carry items such as your keys or driver's license in your pocket.

Confidentiality

Nurses must know a great deal about their patients in order to plan comprehensive care. The student role requires that some of this information be shared with faculty and other students. Students and faculty share the burden of carefully protecting the privacy of all persons concerned. Please do not identify clients by name in any written work and do not discuss any client information outside of the assigned seminar or class times.

STUDENT ORGANIZATIONS

Students of the Canseco School of Nursing founded a chapter of the Texas Nursing Student Association in Spring 1999, with Ms. Carmen Bruni serving as faculty sponsor. In its first few months, members of the organization participated in several community health fairs and health awareness activities.

All registered nurses in the BSN program are urged to be active members of the ANA/TNA. In this way students can participate in the discussion of professional issues in the district meetings and the students' new knowledge can impact health care delivery in the Laredo area.

During the 2000-2001 Academic year, a student honor society was established in time to induct students from the first graduating class of basic nursing students. This honor society is the precursor of a chapter of the international nursing honor society, Sigma Theta Tau.

Students are also encouraged to explore opportunities to participate in university wide student organizations.

STUDENT-FACULTY COMMUNICATION

1. Advisement

Academic advisement for students enrolled in the nursing program at Texas A&M International University is provided by the director and nursing faculty. Each student is assigned an advisor. This faculty member is the student's academic advisor from admission through graduation unless a change is sought by the student or is necessary due to change in faculty. The advisor's name will be included in the letter notifying the candidate that he/she has been admitted to the School of Nursing. An up to date list of advisors and advisees is available in the main office of the Canseco School of Nursing.

The role of the advisor is to assist students in: (1) planning their course of study, (2) selecting courses congruent with the nursing degree plan and career goals, and (3) utilizing existing University facilities, such as financial aid services.

Students should meet with their advisors prior to or during each registration period. The purpose of this meeting is to inform the student of current offerings in the nursing program and review the advisee's progress in the degree plan. Each student is responsible for awareness and successful completion of all the degree requirements. In addition, the student is responsible for:

1. Making initial contact with academic advisor
2. Contacting academic advisor for degree planning
3. Contacting academic advisor for preregistration appointment each term.

General education requirements can be reviewed with advisors for the School of Nursing. Student transcripts will be used on admission to determine which prerequisite courses have been met by previous course work. The director will review course inventories with the registrar one semester before graduation, but students should keep a record of their own progress toward meeting graduation requirements. If students are taking required courses at another institution, they need to be sure to have their transcripts sent to the TAMIU Registrar.

2. Student Records

Students' records are maintained in the School of Nursing office. The Open Record Policy is followed whereby students can review their own records within the respective office, but cannot take the record outside the office. All nursing students are responsible for keeping the Registrar's Office and the School of Nursing office informed of any change in name, address, or phone number. In addition, students must provide evidence to the School of Nursing of current nursing licensure (if appropriate), biannual successful BLS Completion, and selected immunizations. These are recorded in the student's file. Such verification has to be made prior to clinical experiences each year.

3. Student Participation on Faculty Committees

Student representatives attend and participate in General Faculty, Curriculum and Admission/Progression committee meetings.

4. Bulletin Boards

Two bulletin boards are maintained in the Nursing Resources Center for student faculty communications related to classroom and clinical assignments, projects, deadlines, etc. Please stop by and check the boards for relevant information.

In addition, hallway bulletin boards offer information on programs, activities, employment opportunities and current events of interest to nurses and other health care providers.

5. E-mail Communication Policy

All SON students must establish campus e-mail account, to facilitate essential communications.

TAMIU E-mail for Life

As a student and alumni you are entitled to a TAMIU Internet Account. If you do not have a TAMIU E-mail Account, here's how to get one now!

Step 1: Open an Internet Browser (Netscape 6.0 or higher or Internet Explorer 5.0 or higher).

Step 2: In the Address Bar, type <https://students.tamiau.edu/> and press enter. You should be directed to the TAMIU E-mail for Life Main Page.

Step 3: When the site comes up, click under account setup.

Step 4: Create your e-mail Account. Type in your Campus Wide ID (student ID) and the last 4 digits of your SSN, if you do not know your Campus Wide ID; contact the University Registrar's Office.

Step 5: Create your e-mail address. Under username, type a username of your choice. Enter a password and Click "Submit". Note: If that username is already taken, the system will prompt you to select another one.

Step 6: You will receive a confirmation after your e-mail account has been created!

FINANCIAL AID OPPORTUNITIES

Refer to the Texas A&M International University's Student Handbook. In addition, students should ask advisors about any special financial aid opportunities, which may be available to nursing students. Students may also find many additional opportunities through the Internet. Try the following sites:

CollegeQuest.com

ScholarAid.com

FastWeb.com

AdventuresinEducation.org

PROCEDURES AND POLICIES

- ❖ ADMISSION TO BASIC NURSING PROGRAM
- ❖ ADMISSION TO RN/BSN PROGRAM
- ❖ CRIMINAL BACKGROUND AND DRUG SCREENING
- ❖ PROGRESSION
 - CLINICAL NURSING REQUIREMENTS
 - GRADING POLICIES
 - ATTENDANCE POLICY
 - EXAMINATION POLICY AND GUIDELINES
 - GRIEVANCE
 - ADD/DROP/WITHDRAW/INCOMPLETE
- ❖ GRADUATION REQUIREMENTS

ADMISSION REQUIREMENTS - BASIC NURSING

Nursing students pursue professional courses based on knowledge of physical, biological and social sciences, the humanities, and communication skills. Upon successful completion of requisite courses in these disciplines, students are eligible for admission to the upper-division clinical studies unit of the School of Nursing. All prospective nursing students should seek advisement from faculty of the School of Nursing, in order to plan a program of study that meets the needs of the student as well as the requirements of the degree plan.

Students are accepted into clinical studies in the spring of each year. Transfer students will be accepted into clinical studies in the spring and fall of each year. Admission to clinical studies is competitive and on a space available basis. See "Admission to Clinical Nursing Courses."

APPLICATION PROCESS

Upon completion of prescribed freshman year course work (35 SCH), including prerequisite science courses, students should submit a record of their grades in freshman year courses, two letters of reference, the signed "acknowledgement of license eligibility requirements" form and the School of Nursing Application form. Students meeting all admission requirements will be selected for admission on the basis of scores on a standardized nursing school admission test that evaluates competence in math, reading and critical thinking.

ADMISSION TO CLINICAL COURSES

Students are eligible for admission to clinical nursing courses when the following requirements have been met:

1. Acceptance by Texas A&M International University.
2. Complete School of Nursing application and supporting documentation received by the School of Nursing.
3. Completion of at least 35 semester credit hours of core curriculum and support area courses with a minimum cumulative grade point average of 2.5.
4. Completion of Pre-nursing courses in the Canseco School of Nursing: NURS 1302 Cultural Determinants of Health and NURS 2310 Nutrition and Diet Therapy.
5. Completion of at least three of the four required prerequisite science courses, with a minimum grade of "C" and a grade point average of 2.5.
6. Prerequisite course in the sciences must have been completed within 5 years of the date of admission to the major. The assessment of dated credits and courses requiring updating will be made by the Admission and Progression Committee of the Canseco School of Nursing.
7. Score baseline proficiency on the Nurse Entrance Assessment Test (NEAT), Math 75%, Reading 75%, Grammar 75%.

Field of Study Curriculum for Nursing
Texas Higher Education Coordinating Board 2002

The following annotated set of courses, totaling 28 semester credit hours (SCH) of fully transferable and applicable lower-division academic courses, and an additional set of Workforce Education (WECM) nursing courses, make up the Field of Study Curriculum for Nursing:

Academic Courses

Content Area	Number and type of courses	Texas Common Course Numbering System Equivalents
Anatomy & Physiology	2 courses: A&P I with lab and A&P II with lab	BIOL 2401 and BIOL 2402 only*
Microbiology	1 course: Microbiology with lab	BIOL 2420 OR BIOL 2421
Chemistry	1 course: chemistry with lab	Any 4 SCH ACGM course including lab
Nutrition	1 course: Nutrition & Diet Therapy I	HECO 1322 OR BIOL 1322
Psychology	2 courses: General Psychology and Lifespan Growth & Development	PSYC 2301 AND PSYC 2314
Mathematics	1 course: Elementary Statistical Methods	MATH 1342

*Prerequisite courses to BIOL 2401/2402 or the equivalent are not required for the Field of Study Curriculum for Nursing

Nursing Content Courses

NOTE: Lower-division nursing content is offered at community colleges through one of two general types of programs: Blocked or Integrated. Because of the distribution of content, it is extremely difficult to align curricula from one type of program to another. Students who desire to transfer from a program utilizing one type of program into the other type of program should be prepared to make up some content through a “bridge” course or through the repetition of some content within courses. It is recommended that a student make every effort to avoid transferring from one type of program to the other before completing the associate degree in nursing in order not to lose credit.

Lower-division nursing content courses being transferred from a blocked-curriculum program to another blocked-curriculum program should be applied to the degree on a course-for-course substitution basis, in which the course transferred is applied IN LIEU OF the course at the receiving institution, even if the number of semester credit hours awarded upon the completion of the course varies between the sending and receiving institutions. The same procedure should be used when a student transfers from an integrated-curriculum program into another integrated-curriculum program.

For Nursing Content Courses, CHOOSE EITHER Blocked Curriculum OR Integrated Curriculum BUT NOT BOTH:

BLOCKED CURRICULUM

Content Area	WECM Course Rubric & Number	SCH Range (Required Clinical Corequisite)
Fundamentals (including Basic Skills)	RNSG 1413/RNSG 1513 (basic skills incorporated) OR RNSG 1413/1513 PLUS RNSG 1105/1205 OR RNSG 1209/1309 PLUS RNSG 1105/1205 OR Any equivalent theory/lab combination	2 to 6 SCH
Mental Health	RNSG 2113/2213	1 OR 2 SCH
Obstetrics/Pediatrics	RNSG 1412/1512 OR RNSG 1251 PLUS RNSG 2201 OR RNSG 2208/2308 PLUS RNSG 2201	4 OR 5 SCH
Medical/Surgical Nursing	RNSG 1331/1431 or 1231 PLUS 1232 C. <u>PLUS</u> RNSG 1347/1447 or 1247 PLUS 1248 OR RNSG 1341/1441 PLUS RNSG 1343/1443 OR EQUIVALENT with OR without RNSG 1144/ RNSG 1244	2 to 6 SCH

OR

INTEGRATED CURRICULUM

Content Area	WECM Course Rubric & Number	SCH Range (Required Clinical Co-requisite)
Introduction to Professional Nursing for Integrated Programs	RNSG 1423/RNSG 1523 (basic skills incorporated) OR RNSG 1423/1523 PLUS RNSG 1119/1219 OR RNSG 1222 PLUS RNSG 1223 PLUS RNSG 1119/1219	2 to 6 SCH
Integrated Care of the Client with Common Health Care Needs	RNSG 2404/2504 (basic skills incorporated) OR RNSG 2404/2504 PLUS RNSG 11XX/12XX D. <u>OR</u> RNSG 2203 PLUS RNSG 2204 PLUS RNSG 11XX/12XX	2 to 6 SCH

The following notes address special circumstances and are also part of the field of study curriculum:

- (1) Wherever possible, courses applied to fulfill field of study curriculum requirements should also be used to satisfy requirements in the general academic core curriculum. Generally, the math course, the biology or chemistry course(s), and one psychology course should be able to fulfill requirements in both curricula.
- (2) Courses selected for inclusion in the field of study curriculum are those that are common to most baccalaureate nursing programs.
- (3) Completion of the field of study curriculum shall not prevent a receiving institution from requiring additional courses/content for specific degree programs.
- (4) Students should not be required to repeat courses that they have completed successfully.
- (5) The academic courses and the unmodified WECM courses that are included in the Field of Study Curriculum for Nursing should transfer immediately upon approval of the field of study curriculum by the Coordinating Board. New WECM courses and courses that need modification should be accepted in transfer as soon as those modifications have been approved by the WECM Maintenance committee and added to the WECM inventory. Implementation of the complete field of study curriculum should not take more than one calendar year following addition of the new and modified courses to the WECM inventory. New or modified WECM courses will be initiated with entering students. Programs may allow sophomore students to continue with the previous curricula to prevent changing courses in the middle of their programs. Full implementation of new and modified WECM courses must be complete within two years after their addition to the WECM inventory.

ADMISSION TO THE RN/BSN PROGRAM

APPLICATION PROCESS

Students should submit Texas A&M International University's Undergraduate Application form, two letters of reference, the physical examination form and the School of Nursing Application form.

ADMISSION REQUIREMENTS-RN/BSN STUDENTS

Registered Nurses seeking admission to the RN/BSN program apply directly to the School of Nursing. Admission to the University does not automatically guarantee admission to the School of Nursing. All students entering the RN/BSN track are considered transfer students and accepted into the BSN program on a space available basis. In addition to completing all requirements for general admission to the University, the student must meet the following criteria:

1. Completion of a School of Nursing Application (in addition to the University application form).
2. Evidence of current licensure without restrictions as a Registered Nurse in Texas.
3. A 2.5 (on a 4.0 scale) or better cumulative grade point average (GPA) in all previous subjects taken.
4. A 2.5 (on a 4.0 scale) or better cumulative grade point average (GPA) in all previous nursing coursework.
5. A personal interview with the Nursing Admissions and Progression Committee may be required.
6. All University core coursework complete.
7. Verification of drug and criminal background screening by a designated company or agency at student expense.
8. RN/BSN students will enter the Spring semester with the initial course(s) being NURS 3590 (Bridge) and NURS 3302 (Cultural Determinants). No other nursing coursework may be taken until NURS 3590 is successfully completed.
9. Requests for exception from GPA or other admission requirements, supported by evidence of extenuating circumstances, will be considered by the School of Nursing Admissions and Progression Committee only after an official School of Nursing Application has been filed. Such consideration for exceptions will be based on individual student's work performance, academic record, and motivation to continue professional advancement.
10. At the time of entry, the student will be assigned a faculty advisor and be given a degree plan for completion of courses. Any change in degree plan must be made in writing and approved by the appointed advisor. All changes are subject to space availability.

STUDENT HEALTH REQUIREMENTS FOR CLINICAL NURSING COURSES

In order to be eligible for coursework involving direct patient care experiences, all students must provide evidence of current rubella, varicella and TD immunization, PPD or chest X-Rays, Hepatitis B vaccines or signed informed refusal, and current physical examination certifying good health/no restrictions.

**Canseco School of Nursing
Texas A&M International University**

Criminal Background and Drug Screening Policy and Procedure

Texas A&M International University (TAMIU) Canseco School of Nursing (SON) adheres to the policies of all clinical facilities with which the SON is affiliated for student clinical learning experiences. Many clinical facilities and school districts require criminal background and drug screening.

Purpose

Clinical agencies used by the SON stipulate in clinical affiliation agreements that criminal background and drug screening be performed before students are permitted into the clinical facilities. This screening requirement is the same as that required of employees of public and private clinical agencies. This policy governs the drug and criminal background screening for nursing students. The rationale for this requirement for clinical students is based on the concept of due diligence and competency assessment of all individuals whose assignments bring them in contact with patients and employees. This approach ensures uniform compliance with Joint Commission standards pertaining to human resource management. Successful completion of criminal background and drug screening does not guarantee licensure or employment after graduation. Full acceptance into the nursing program is contingent upon satisfactory results. Students will be notified in their letter of admission for the procedure to follow for the screenings. Admission acceptance will be withdrawn for any student with a positive drug or criminal background screening and for those that refuse to have screening done.

Timing

All drug and criminal background screening will be conducted as a condition of full acceptance into the SON. Verification must be received from the designated company (ies) and/or agency (ies) prior to being fully admitted into the nursing program. The results will be accepted for the duration of the student's enrollment in the nursing program unless there is a change in the clinical facility requirements or if the participating student has not had a break in the nursing program and if the student has had no convictions while enrolled. A break in enrollment is defined as nonattendance of one full semester or more. Attendance must be verifiable through the university. The SON does reserve the right to request random drug or background screenings at any time with the student responsible for all costs.

The SON will designate the company (ies) and/or agency (ies) selected to do the drug and criminal background screening and will not accept results from any other company or agency. The student is responsible for the cost of the criminal and drug screening at the time of screening. The cost is non-refundable.

Process Criminal Background Screening

Criminal background screening will be performed by a SON designated external vendor and the student is responsible for all costs. The check will review the student's criminal history and should include the cities and counties of all known residences. Criminal background checks must include a person's criminal history for seven years prior to date of application. The following histories will disqualify an individual from consideration from admission in the nursing program:

- Misdemeanor convictions/deferred adjudications or felony convictions/deferred adjudications involving crimes against persons
- Misdemeanor convictions/deferred adjudications related to moral turpitude
- Misdemeanor/felony convictions/deferred adjudications for the sale, possession, distribution, or transfer of narcotics or controlled substances
- Registered sex offenders

Individuals with any of the above histories or who refuse to have a criminal background screen will not be eligible to enroll in the nursing program, and if the history is discovered or conviction occurs after enrollment, the student will be required to immediately withdraw from the program. A student who is convicted of a criminal offense while enrolled in the program must report the conviction to the SON Director within three days of conviction. The term conviction for these purposes includes probated sentences and deferred adjudications.

A student may be considered for readmission to the SON if the Board of Nurse Examiners for the State of Texas issues a Declaratory Order stating the individual is eligible for initial licensure or license renewal or determines that the individual is eligible to return to practice.

Note:

1. The student should be aware that the disqualifications listed above are used for employment eligibility by most hospitals in Texas.
2. Completion of a specific program will be determined by the student's ability to successfully complete all required clinical rotations.
3. Clinical rotations are completed at sites specified by and contracted with Texas A&M International University. The university will not locate or provide alternative sites for clinical rotations for a student ineligible to attend clinical rotations at specified sites.
4. All costs for background screening will be paid by the student.

Process Drug Screening

If the student has a positive drug screen or refuses to have a drug screen he/she will not be eligible to enroll in the nursing program. If there is a positive drug screen or the student refuses to have a drug screen after enrollment the student will be required to immediately withdraw from the SON. The student will then be required to complete, at the student's cost, chemical dependency evaluation and treatment, if recommended by the drug assessment. The chemical dependency evaluation must be by a provider approved by the SON. Any student in the program with a

positive drug screen shall be suspended for a minimum of one calendar year from all coursework with the stipulation that the student receive and show proof of treatment to the Director of the SON. Random drug screening will be required as a component of the recovering process by the agency providing treatment with results conveyed to the Director of the SON. Only with documentation of successful treatment after the minimum one calendar year suspension will the student be considered for readmission on a space available basis. Prior to readmission to the SON the student must be retested by a SON approved laboratory and have a negative drug screen. Testing is done at student expense. If the drug screen is positive this will result in permanent ineligibility for readmission. After readmission the student must submit to random drug screens as request by the SON. A positive drug screen will result in permanent dismissal and ineligibility for readmission into the SON.

School of Nursing and Clinical Agency Duty to Report to the Board of Nurse Examiners

The following are excerpts are from The State of Texas Nursing Practice Act, Nursing Peer Review and Nurse Licensure Compact. For entire document and/or section requirements please see: <ftp://www.bne.state.tx.us/npa2005.pdf>

Except as provided by Subsection (b) the following are grounds for reporting a nurse under Section 301.402, 301.403, 301.405, or 301.407.

Sec. 301.401 Grounds for Reporting nurse

- (1) likely exposure by the nurse of a patient or other person to an unnecessary risk of harm
- (2) unprofessional conduct by the nurse
- (3) failure by the nurse to adequately care for a patient
- (4) failure by the nurse to conform to the minimum standards of acceptable nursing practice;
or
- (5) impairment or likely impairment of the nurse's practice by chemical dependency

Section 301.402 Duty of Nurse to report (see actual section for entire reporting requirements)

(a) In this section:

- (1) "Nursing educational program" means a board approved educational program leading to initial licensure as a registered nurse or vocational nurse
- (2) "Nursing student" means an individual who is enrolled in a professional nursing or vocational nursing education program.

(b) A nurse shall report to the board in the manner prescribed under Subsection (d) if the nurse has reasonable cause to suspect that:

- (1) another nurse is subject to a ground for reporting under Section 301.401; or
- (2) the ability of a nursing student to perform the services of the nursing profession would be, or would reasonable be expected to be, impaired by chemical dependency

Sec. 301.403. Duty of Peer Review Committee to Report

A nursing peer review committee operating under Chapter 303 that has a ground for reporting a nurse under Section 301.401 shall file with the Board a written, signed report.

(See actual section for full reporting requirements)

Sec. 301.404 Duty of Nursing Educational Program to Report

- (a) In this section, “nursing educational program” and “nursing student” have the meanings assigned by Section 301.402(a)
- (b) A nursing educational program that has reasonable cause to suspect that the ability of a nursing student to perform the services of the nursing profession would be, or would reasonable be expected to be, impaired by chemical dependency shall file with the Board a written, signed report that includes the identity of the student and any additional information the Board requires.

Compliance and Record Keeping

The designated company will notify TAMIU (SON) Director of all individuals who fail drug or criminal background checks. All records will be kept separate and confidential.

The SON will send verification on adherence to the policy to the clinical affiliate prior to the clinical rotation start date. Verification is accomplished by sending a letter from the SON on letterhead stating that these standards have been met by the student, listing the student’s full name and clinical rotation start date. If more than one student is attending a clinical rotation, a comprehensive list with all of the student’s names may be submitted.

**Texas A&M International University
Canseco School of Nursing**

Criminal and Drug Screening Waiver Agreement

I understand that as a requirement for admission to Texas A&M International University, Canseco School of Nursing, I must submit to criminal background and drug screening from a designated company (ies) and or agency (ies). These companies and/or agencies will provide the results to the Director of the School of Nursing (SON). I understand that either refusal to submit to screenings or positive results will result in denial of admission to the SON.

I further understand that I may be subject to repeated drug and background screenings while enrolled in the SON. A positive result or refusal to submit to screenings will result in immediate dismissal from the SON.

By signing this document, I indicate that I have read, I understand, and I agree to the Canseco School of Nursing Drug and Criminal Background Screening Policy. I understand that a negative drug and criminal background screen is required for admission and for progression in the school of nursing. I also understand that all costs associated with the screening process are the responsibility of the student.

This notarized document constitutes my consent for drug and criminal background screening by a school of nursing designated company and/or agency. It also constitutes consent for results of my laboratory drug and criminal background screening to be released to Director of the School of Nursing.

Student Printed Name

Student Signature

Sworn to me this _____ day of _____, 20 ____

(seal) Notary: _____

My commission expires: _____

in and for the County/State of: _____

TRANSFER APPLICANTS

Transfer applicants must meet the same academic criteria for admission to Clinical Studies as stipulated above for pre-clinical students. Admission is competitive and contingent on available space. Applicants must meet all admission requirements of the University, and in addition, must meet the following criteria:

1. Accepted into the school of nursing on space available basis only.
2. Have a GPA of 2.5 overall on all previous required nursing course work.
3. Have four hours required science courses within the last 5 years with a GPA of 2.5.
4. Pass the HESI entrance exam with a predictive score of 75% or greater on each of the required areas.
5. Have completed all previous nursing course work within the previous 3 years.
6. Meet all other university requirements for transfer and be eligible for a degree from TAMIU.
7. Verification of drug and criminal background screening by a designated company or agency at student expense.

Criteria for acceptance of transfer work is as follows:

1. Courses taken in pharmacology and nutrition will be evaluated for course transferability.
2. Courses in foundations and skills will be evaluated for course compatibility with the SON, credit may be given for foundations and skills if grade is C or better.
3. Introductory medical surgical/adult health nursing, pediatric nursing, mental health nursing, and maternity nursing (if previously taken) must be validated by an exit exam required by the SON for all nursing students. A predictive score of 75% or better is considered passing

LICENSURE AS A REGISTERED NURSE

Rule: §213.30 Declaratory Order of Eligibility for Licensure.

- (a) A person enrolled or planning to enroll in an educational nursing program that prepares a person for an initial license as a registered or vocational nurse or an applicant who seeks licensure by endorsement pursuant to §217.5 of this title (relating to Temporary License and Endorsement) who has reason to believe that he or she may be ineligible for licensure, may petition the Board for a declaratory order or apply for a license by endorsement as to his or her eligibility.
- (b) The person must submit a petition or application on forms provided by the Board which includes:
- (1) a statement by the petitioner or applicant indicating the reason(s) and basis of potential ineligibility;
 - (2) if the potential ineligibility is due to criminal conduct and/or conviction, any court documents including, but not limited to, indictments, orders of deferred adjudication, judgments, probation records and evidence of completion of probation, if applicable;
 - (3) if the potential ineligibility is due to mental illness, evidence of evaluation, including a prognosis, by a psychologist or psychiatrist, evidence of treatment, including any medication;
 - (4) if the potential ineligibility is due to chemical dependency including alcohol, evidence of evaluation and treatment, after care and support group attendance; and
 - (5) The required fee which is not refundable.
- (c) An investigation of the petition/application and the petitioner's/applicant's eligibility shall be conducted.
- (d) The petitioner/applicant or the Board may amend the petition/application to include additional grounds for potential ineligibility at any time before a final determination is made.
- (e) If an applicant under §217.5 of this title has been licensed to practice professional or vocational nursing in any jurisdiction and has been disciplined, or allowed to surrender in lieu of discipline, in that jurisdiction, the following provisions shall govern the eligibility of the applicant under §213.27 of this title (relating to Good Professional Character).
- (1) A certified copy of the order or judgment of discipline from the jurisdiction is prima facie evidence of the matters contained in such order or judgment, and a final adjudication in the other jurisdiction that the applicant has committed professional misconduct is conclusive of the professional misconduct alleged in such order or judgment.
 - (2) An applicant disciplined for professional misconduct in the course of nursing in any jurisdiction or an applicant who resigned in lieu of disciplinary action is deemed to not have present good professional character under §213.27 of this title and is therefore ineligible to file an application under §217.5 of this title during the period of such discipline imposed by such jurisdiction, and in the case of revocation or surrender in lieu of disciplinary action, until the applicant has filed an application for reinstatement in the disciplining jurisdiction and obtained a final determination on that application.
- (f) If a petitioner's/applicant's potential ineligibility is due to criminal conduct and/or conviction, the following provisions shall govern the eligibility of the applicant under §213.28 of this title (relating to Licensure of Persons with Criminal Convictions):
- (1) The record of conviction or order of deferred adjudication is conclusive evidence of guilt.
 - (2) An individual guilty of a felony under this rule is conclusively deemed not to have present good professional character and fitness and should not petition the Board for a Declaratory Order of Eligibility for Licensure for a period of three years after the completion of the sentence and/or

period of probation.

(3) Upon proof that a felony conviction or felony order of probation with or without adjudication of guilt has been set aside or reversed, the petitioner or applicant shall be entitled to a new hearing before the Board for the purpose of determining whether, absent the record of conclusive evidence of guilt, the petitioner or applicant possesses present good professional character and fitness.

(g) If the executive director proposes to find the petitioner or applicant ineligible for licensure, the petitioner or applicant may obtain a hearing before the State Office of Administrative Hearings. The Executive Director shall have discretion to set a hearing and give notice of the hearing to the petitioner or applicant. The hearing shall be conducted in accordance with §213.22 of this title (relating to Formal Proceedings) and the rules of SOAH. When in conflict, SOAH's rules of procedure will prevail. The decision of the Board shall be rendered in accordance with §213.23 of this title (relating to Decision of the Board).

(h) A final Board order is issued after an appeal results in a Proposal for Decision from SOAH. The Board's final order must set out each basis for potential ineligibility and the Board's determination as to eligibility. In the absence of new evidence not disclosed by the petitioner or not reasonably available to the Board at the time the order is issued, the Board's ruling determines the person's eligibility with respect to the grounds for potential ineligibility as set out in the order. An individual whose petition is denied by final order of the Board may not file another petition or application for licensure until after the expiration of three years from the date of the Board's order denying the petition or application for licensure. If the applicant or petitioner does not appeal or request a formal hearing at SOAH after a letter proposal to deny eligibility made by the E&D Committee or the executive director, the applicant or petitioner may re-petition after the expiration of one year from the date of the proposal to deny eligibility, in accordance with this rule and §301.257, Texas Occupations Code.

Source Note: The provisions of this §213.30 adopted to be effective August 15, 2002, 27 TexReg 7107; amended to be effective May 17, 2004, 29 TexReg 4884; amended to be effective February 19, 2006, 31 TexReg 847

SECTION 301.452 GROUNDS FOR DISCIPLINARY ACTION.

(a) In this section, "intemperate use" includes practicing nursing or being on duty or on call while under the influence of alcohol or drugs.

(b) A person is subject to denial of a license or to disciplinary action under this subchapter for:

(1) a violation of this chapter, a rule or regulation not inconsistent with this chapter, or an order issued under this chapter;

(2) fraud or deceit in procuring or attempting to procure a license to practice professional nursing or vocational nursing;

(3) a conviction for, or placement on deferred adjudication community supervision or deferred disposition for, a felony or for a misdemeanor involving moral turpitude;

- (4) conduct that results in the revocation of probation imposed because of conviction for a felony or for a misdemeanor involving moral turpitude;
 - (5) use of a nursing license, diploma, or permit, or the transcript of such a document, that has been fraudulently purchased, issued, counterfeited, or materially altered;
 - (6) impersonating or acting as a proxy for another person in the licensing examination required under Section 301.253 or 301.255;
 - (7) directly or indirectly aiding or abetting an unlicensed person in connection with the unauthorized practice of nursing;
 - (8) revocation, suspension, or denial of, or any other action relating to, the person's license or privilege to practice nursing in another jurisdiction;
 - (9) intemperate use of alcohol or drugs that the Board determines endangers or could endanger a patient;
 - (10) unprofessional or dishonorable conduct that, in the board's opinion, is likely to deceive, defraud, or injure a patient or the public;
 - (11) adjudication of mental incompetency;
 - (12) lack of fitness to practice because of a mental or physical health condition that could result in injury to a patient or the public; or
 - (13) failure to care adequately for a patient or to conform to the minimum standards of acceptable nursing practice in a manner that, in the Board's opinion, exposes a patient or other person unnecessarily to risk of harm.
- (c) The Board may refuse to admit a person to a licensing examination for a ground described under Subsection (b).

The board is entitled to obtain criminal conviction record information maintained by the Department of Public Safety or the Federal Bureau of Investigation identification division to investigate a person who applies for a license or requests a determination of eligibility for a license or who is subject to investigation by the board in connection with a complaint or a formal charge filed against the person. The Department of Public Safety may not provide the board with the criminal conviction record information of a person unless the information relates to:

- (1) a felony;
- (2) a misdemeanor that involves moral turpitude;
- (3) an offense involving the abuse of drugs, including alcohol; or
- (4) conduct resulting in revocation of probation imposed under a conviction for conduct or an offense listed in Subdivision (1), (2), or (3) of this subsection.

(Source: Board of Nurse Examiners for The State of Texas Nurse Practice Act, 4/93)

ADMISSION DELAY POLICY

A student may elect to defer admission to clinical nursing coursework for a period of one year only. If the student fails to enroll within 12 months of the original admission date, the offer of admission will be withdrawn and the student must initiate the process again.

CORE PERFORMANCE STANDARDS*

The Texas A&M International School of Nursing has adopted the following Core Performance Standards for Admission and Progression in compliance with the 1990 Americans with Disabilities Act (ADA).

Issue	Standard	Some Examples of Necessary Activities (not all inclusive)
Critical Thinking	Critical thinking ability sufficient for clinical judgment	Identify cause-effect relationships in clinical situations, developing nursing care plans.
Interpersonal	Interpersonal abilities sufficient to interact with individuals, families, and groups from a variety of social, emotional, cultural, and intellectual backgrounds.	Establish rapport with patients/clients and colleagues
Communication	Communication abilities sufficient for interaction with others in verbal and written form	Explain treatment procedures, initiate health teaching, document and interpret nursing actions and patient/client responses
Mobility	Physical abilities sufficient to move from room to room and maneuver in small spaces	Move around in patients' rooms, work spaces, and treatment areas; administer cardiopulmonary procedures
Motor Skills	Gross and fine motor abilities sufficient to provide safe and effective nursing care	Calibrate and use equipment; position patients/clients
Hearing	Auditory ability sufficient to monitor and assess health needs.	Hear monitor alarm, emergency signals, auscultatory sounds, cries for help
Visual	Visual ability sufficient for observation and assessment necessary in nursing care	Observe patient/client responses
Tactile	Tactile ability sufficient for physical assessment	Perform palpation, functions of physical examinations and/or those related to therapeutic intervention, e.g., insertion of catheter

*Developed by the Southern Council on Collegiate Education for Nursing (SCCEN), March 1993.

STUDENT SELECTION

If at any time the number of qualified applicants should exceed the faculty and facilities available, the final selection of students will be based upon the dates the applications were received and upon the dates the requirements for admission were met. Any students who meet admission requirements but are unable to enroll in a given year will be given priority for enrollment the following year.

PROGRESSION

GENERAL REQUIREMENTS FOR CLINICAL NURSING COURSES

In order to be eligible for coursework involving direct patient care experiences all students must provide evidence of current Rubella, Varicella, and DT immunization, PPD or chest X-ray, Hepatitis B vaccines or signed informed refusal, and current physical examination certifying good health/no restrictions. In addition, students are required to submit clean drug and criminal background checks or declaratory orders from the Texas Board of Nurse Examiners.

GRADING POLICIES

The Canseco School of Nursing has adopted a grading scale in line with other Texas Schools of Nursing.

A – 93 - 100

B – 84 - 92

C – 75 - 83

Nursing students must achieve a grade of C or better and pass both clinical and theory components of a course in order to pass that course.

(*In some cases, students may receive a non-passing grade of D in prenursing courses.)

ATTENDANCE POLICY

The Canseco School of Nursing adheres to the Texas A&M International University classroom attendance policy as stated in the current catalog. Because of in class activities and quizzes class attendance is critical to student success.

Clinical Attendance:

1. It is the student's responsibility to contact the clinical agency if she/he will be tardy.
2. Arriving 15 minutes after the stated beginning time of a clinical rotation constitutes tardiness.
3. Three documented tardies during a clinical rotation constitutes one clinical absence.
4. Two documented clinical absences may be allowed per 15-week semester.
5. One documented clinical absence may be allowed per 7-week semester. (special session)
6. A written warning will be given after the first absence & a follow up documentation will be completed on the student following the 2nd absence.
7. Absences in excess of those allowed per semester will be referred to the faculty committee.

8. Decisions on make-up clinical for absences will be arranged by the faculty at a rate of 2:1.
9. Course syllabi may specify more stringent policies

COURSE POLICIES

Each course syllabus includes a statement of course policies. These policies may be more but not less stringent than overall school or university policies.

EXAMINATION POLICY AND GUIDELINES

(Updated January 13, 2006.)

A. Examinations:

Testing format for the course is identified in the nursing course syllabus. To provide students with practice prior to the licensure examination, all nursing examinations use a NCLEX format, which is different from other methods of testing. All test items will assess the student's ability to apply and analyze knowledge learned in the course. Items will ask the student to apply abilities at assess, plan, implement, or evaluate.

B. All examinations will be proctored.

1. All materials brought into a test, except for a parscore sheet, a number 2 pencil with an eraser, black ink pen, and calculator (unless disallowed) must be left in the front of the classroom or area designated by the faculty proctor. Students may wear coats or jackets during the examination period at the discretion of faculty. Faculty will determine what additional aids will be allowed or used during the examination.
2. Students found obtaining information from sources other than what has been allowed by the proctor will be given a **ZERO (0)** in that exam/quiz
3. If the instructor suspects any sharing during an examination, all students involved will receive a **ZERO (0)** on that examination, and will face all consequences of academic dishonesty according to the Canseco School of Nursing Handbook.
4. Student must use approved calculators (computer provides one that does not allow any saving of any materials) for examinations. Students may not borrow calculators from other students during the examination.

C. Any student who is absent from an examination must notify faculty **prior to the examination.**

The weight of the missed test will be added to the student's final examination. The student will be given the opportunity to review the missed test and key with the faculty member during office hours or during review with the class. Review time set by course faculty.

D. Only one test can be missed and count toward the final grade. Any other missed examinations will be assigned a grade of **ZERO (0)**.

E. Students who need to leave the examination area will be requested to leave all testing materials; questionnaires, parscore, etc. with the proctor.

- F. At the conclusion of the examination period, all examination materials will be submitted to the proctor.
- G. Test tutorials are given at the discretion of the instructor. Test maps will be made available to students prior to examination dates at the discretion of the course instructor.
- H. Test reviews will be provided after the test at the discretion of the instructor.
 - 1. Examination item answers may be challenged in writing delineating rationale and reference for challenge following the review of the examination.
 - 2. Examination challenges will only be accepted within 2 days of the examination review.
 - 3. Proper credit will be given to the student if and when the rationale and reference for the challenged examination item are determined accurate.
- I. Examination grades may be posted according to the TAMIU student handbook or course syllabus.
- J. Course faculty may establish other requirements at their discretion but in no case will these requirements be less stringent.
- K. No Exam grade will be dropped in determining the final grade
- L. Pop quizzes may be given at the discretion of the course instructor(s).
- M. A Zero (0) will be awarded to any student who is absent at the time a Quiz is administered.
- N. Standardized Achievement Tests will be administered at various times during the student's enrollment in the Baccalaureate nursing program. The results are used to identify strengths and weaknesses and assist in prescribing the remedial activities. They may also be included in the final course grade.

GRIEVANCE

It is expected that faculty and students will fulfill their obligations to the instructional process. If, however, a complaint does arise, the parties should meet in an effort to resolve the matter. Students are encouraged to discuss problems using the following chain of communication for resolution, before resorting to the official appeals process.

- (1) Clinical instructor (where appropriate)
- (2) Course Manager
- (3) Advisor
- (4) Director of the School of Nursing

If the problem cannot be resolved by this procedure, the Director should be contacted. If this contact fails to satisfy the complaint, the University's published grievance procedures should be followed. (See also, TAMIU's Student Handbook)

ADD, DROP, WITHDRAW, and INCOMPLETE

The School of Nursing follows the general policies of Texas A&M International University as outlined in the catalog with respect to add, drop, withdraw and incomplete.

In addition the following policies apply to Nursing Courses:

1. The faculty of the School of Nursing supports the idea that the use of an "I" or "W" to hide unsuccessful performance is inappropriate.
2. After the 10th week or 2/3 of class both the course faculty and the Director must approve the withdrawal. Adds or drops must be signed by School of Nursing faculty.
3. All students must maintain a satisfactory (2.00) grade point average:
 - a. Cumulative (includes General Education/Liberal Arts and Nursing).
 - b. Professional (includes only nursing courses). It should be noted that admission to a master's program usually requires a 3.0 GPA in the major at the baccalaureate level.
4. Students must achieve a grade point average. of 2.00 or better in each nursing course. A student may not continue in subsequent courses for which the failed course is prerequisite until a minimum of grade "C" has been achieved.
5. A student receiving an "F" grade in either the theory or the clinical portion of any nursing course will fail the course.
6. Students may repeat a nursing course, as space is available, only once to raise the grade to "C" or above.
7. Under certain circumstances, students may receive an "I" (incomplete) in a course, in keeping with TAMIU policy. The student and course faculty will contract for completion of course requirements.
8. Students who are unable to maintain active continuous enrollment at TAMIU School of Nursing must apply for a Leave of Absence from the School in order to remain in good standing. Such students will be permitted to reenter the School of Nursing on a space available basis and will be given priority for available space.

ACADEMIC PROBATION

Probationary status is a warning to a student to improve his/her academic performance in order to remain in the program.

1. A student is placed on probation if she/he does not maintain a minimum cumulative grade point average of 2.00. The final grade report will carry official notice of academic probation.
2. A student is placed on probation if she/he does not maintain a minimum grade point average of 2.00 in nursing courses. The School of Nursing notifies the student of professional probation.
3. A GPA must be returned to minimum of 2.00 to remove probationary status. Students will have 30 semester credit hours in which to remove probationary status.
4. Restriction: Students on probation are not eligible to represent the School of Nursing in any student activity/committees.
5. Students who fail to attain a 2.00 cumulative grade point average for two full-time consecutive semesters will be suspended from the School of Nursing.
6. Students suspended from clinical studies because of a low grade point average may return after a semester on a space-available basis and take prescribed courses to raise their grade point average. Students unable to raise their grade point average to 2.00 within one semester after returning from suspension will be dismissed from the School of Nursing.
7. Students may also be dismissed from clinical studies for any of the following reasons:
 - a. Academic misconduct such as any act of dishonesty involving academic work.
 - b. Unsafe clinical practice.
 - c. Falsification of credentials.
 - d. Conduct unbecoming to a student as described in the University Student Conduct Code.
8. Academic suspensions and dismissals are nonreversible. However, a student may appeal the course grade which resulted in suspension or dismissal within one semester of the award of the grade. (See grievance procedure)

RE-ADMISSION TO THE SCHOOL OF NURSING

Students not enrolled in Clinical Nursing Courses for two consecutive semesters or formally dismissed may not apply for readmission for a period of at least one academic year. Applicants for readmission to the School of Nursing must be eligible for readmission to the University. Decisions will be made by the School of Nursing Admissions Committee. The deadlines for regular admission apply to students seeking readmission but the process differs. Readmission application materials are available from the Office of the Director, School of Nursing.

GRADUATION REQUIREMENTS

The School of Nursing adheres to all general requirements and procedures of the University for graduation. For deadlines and requirements, see TAMIU catalog. In their final year, students need to verify with their advisors that all requirements for graduation and/or honors have been met. In addition, students are eligible to apply for graduation when the following conditions are met:

1. Completion of required semester credit hours
2. A cumulative GPA of 2.00
3. Completion of all clinical studies course work

ELIGIBILITY FOR GRADUATION IN BASIC NURSING

Policy:

Satisfactory performance on diagnostic examinations designated by the School of Nursing to validate potential performance on the National Council Licensure Examination is required for basic students to be eligible for graduation.

Procedure:

1. All students in the final semester of the clinical nursing program will enroll in NURS 4290: Senior Lab Seminar.
2. At the beginning of the final semester, students will be administered a diagnostic examination by the School of Nursing.
3. Upon receipt of the resulting diagnostic profile, each student will be counseled by the faculty advisor to identify areas of strengths and weaknesses. The student and faculty will develop a contract for an individualized plan to assist in meeting the student's needs.
4. A Nationally standardized comprehensive examination will be administered during the final semester. To be eligible to write the comprehensive examination, the student must provide evidence that the terms of the contract have been met.
5. Students who fail to demonstrate satisfactory performance on the comprehensive examination will not be eligible for graduation.
6. A student who does not achieve satisfactory performance on two attempts of the comprehensive examination will be required to re-enroll in NURS 4290: Senior Seminar and retake the exit examination at the end of the course. If satisfactory performance is not achieved on the second attempt on the comprehensive examination during the second attempt in the course, the student will not be eligible for a degree. A student may withdraw from the course NURS 4290 only once and take the comprehensive exit examinations a maximum of 5 times under such circumstances the course.

Appendix A Faculty/Staff Roster

Faculty

Susan S. Walker, Ph.D., RN
Director / Professor
Carleton College, Boston University,
University of Texas Medical Branch

Louise A. Autio, PhD., FNP, RN
Associate Professor / Program Coordinator
University of Illinois
Texas Woman's University

Natalie Burkhalter, MS, RN, CS, FNP, CCRN
Associate Professor
Corpus Christi State University, Incarnate Word College,
Midwestern State University

Carmen Bruni, MSN, RN, CS, CNA
Assistant Professor
Texas Women's University
University of the Incarnate Word

Linda Flores, MSN, RN
Assistant Professor
Texas A&M University—Corpus-Christi, Texas

Vivian Garcia, MSN, RN, FNP
Assistant Professor
Texas A&M Corpus Christi

Belva Gonzalez, MSN, RN, FNP
Assistant Professor
Texas A&M Corpus Christi

Loretta T. Gottschalk, DrPH, RN, FAAN
Visiting Professor
Case Western Reserve University, University of Missouri,
University of Texas Health Science Center School
Of Public Health (Houston)

Irma Lara, MSN, RN, FNP
Assistant Professor
Texas A&M University–Corpus Christi

Horacio Palacios, MSN, RN
Assistant Professor
Texas A&M University–Corpus Christi
Texas Woman's University

Rose Saldivar, MSN, RN, FNP
Assistant Professor
University of Texas Medical Branch,
Texas A&M University-Corpus Christi
University Health Science Center San Antonio

Marivic Torregosa, MSN, RN, FNP
Assistant Professor
University of Bohol, Philippines
Texas A&M Corpus Christi