

The F.M. CANSECO
SCHOOL OF NURSING



STUDENT HANDBOOK

2009-2010

TEXAS A&M INTERNATIONAL UNIVERSITY
LAREDO, TEXAS

Table of Contents

I. INTRODUCTION	
A. WELCOME!	4
B. ABOUT CANSECO SCHOOL OF NIURSING	4
C. ACCREDITATION	4
II. PHILOSOPHY AND GOALS	
A. TEXAS A&M INTERNATIONAL UNIVERSITY MISSION STATEMENT	9
B. PHILOSOPHY OF THE COLLEGE OF NURSING AND HEALTH SCIENCES	9
C. CONCEPTUAL FRAMEWORK	9
D. SCHOOL OF NURSING PROGRAM OBJECTIVES	9
III. ORGANIZATIONAL STRUCTURE	
A. TEXAS A&M INTERNATIONAL UNIVERSITY FUNCTIONAL ORGANIZATIONAL STRUCTURE	16
B. COLLEGE OF NURSING AND HEALTH SCIENCES ORGANIZATIONAL CHART	16
IV. FACILITIES	
A. NURSING ADMINISTRATION OFFICES AND CLASSROOMS	19
B. SUE AND RADCLIFFE KILLAM LIBRARY	19
C. INTERNATIONAL LANGUAGE INSTITUTE	19
D. COMPUTER FACILITIES AND SERVICES	19
E. CLINICAL SITES	19
V. STUDENT LIFE	
A. STUDENT RIGHTS	27
B. STUDENT RESPONSIBILITIES	27
C. ACADEMIC HONESTY	27
D. STUDENT HEALTH AND SAFETY	27
E. CLINICAL GUIDELINES	27
F. STUDENT ORGANIZATIONS	27
G. STUDENT-FACULTY COMMUNICATION	27
H. FINANCIAL AID OPPORTUNITIES	27
VI. BSN CURRICULUM	
A. DEGREE REQUIREMENTS	36
B. COURSE DESCRIPTIONS	36
C. CURRICULUM	36
D. SEQUENCE OF COURSES	36
E. CREDIT FOR PRIOR LEARNING	36
F. THEORY & CLINICAL LABORATORY HOURS	36
VII. BSN POLICIES AND PROCEDURES	
A. ADMISSION REQUIREMENTS TO BASIC NURSING PROGRAM	50
B. ADMISSION TO RN/BSN PROGRAM	50
C. CRIMINAL BACKGROUND AND SUBSTANCE ABUSE	50
D. UNDERGRADUATE TRANSFER APPLICANTS	50
E. LICENSURE AS A REGISTERED NURSE	50
F. DECLARATORY ORDER REQUIREMENTS OF TEXAS BOARD OF NURSE EXAMINERS	50

G. ADMISSION DELAY POLICY.....	50
H. CORE PERFORMANCE STANDARDS.....	50
I. STUDENT SELECTION	50
J. PROGRESSION.....	50
1. Student Health General Requirements for Clinical Nursing Courses	
2. Grading Policies	
3. Attendance Policy	
4. Course Policies	
5. Examination Policy and Guidelines	
6. Grievance	
7. BSN Program Add, Drop, Withdraw and Incomplete	
8. Academic Probation	
9. Re-admission to the School of Nursing	
10. Student Professional Dress and Appearance Policy	
K. GRADUATION REQUIREMENTS.....	50
VIII. MSN CURRICULUM	
A. MSN DEGREE REQUIREMENTS.....	73
B. MSN COURSE DESCRIPTIONS.....	73
C. CURRICULUM.....	73
D. SEQUENCE OF COURSES.....	73
E. CREDIT FOR PRIOR LEARNING.....	73
F. CLINICAL FACILITIES.....	73
IX. MSN PROCEDURES AND POLICIES	
A. ADMISSION REQUIREMENTS.....	81
1. Purpose	
2. Curriculum	
3. General Requirements	
4. Admission Requirements	
5. Criminal Background and Substance Abuse	
B. PROGRESSION.....	81
1. Progressions, Retention, Suspension	
2. Grading Policies	
3. Examination Policy and Guidelines	
4. Grievance	
5. Add, Drop, Withdraw and Incomplete	
6. Probation/Dismissal/Readmission	
7. Graduation Requirements	
8. Repetition of a Course	
9. Academic Requirements for Graduate Work	
10. Academic Probation and Suspension	
APPENDIX A. FACULTY AND STAFF ROSTER.....	92

I. INTRODUCTION

A. WELCOME!

B. ABOUT THE CANSECO SCHOOL OF NURSING

C. ACCREDITATION

WELCOME!

Welcome Students of the Canseco School of Nursing, College of Nursing and Health Sciences at Texas A&M International University in Laredo, Texas. We are delighted that you chose to further your education in nursing at our School!

These are exciting times in nursing with the aging of our society and the increasingly multicultural nature of our country's population. You have chosen to study nursing at one of seven nursing schools within the Texas A&M University System. Our school offers undergraduate and graduate nursing education within a conceptual framework of transcultural nursing and caring as the essence of nursing. We view nursing as a partnership between the nurse and the client, likewise, we view education as a partnership between the student and the faculty.

The faculty at the Canseco School of Nursing have a broad range of backgrounds, experiences and areas of expertise to assist you in your journey to professional nursing practice. Many of our faculty are advanced practice nurses and most of our faculty hold specialty certification in a variety of areas of nurse specialization.

Within these pages are rules and procedures for success as a nursing student. Please take some time to review our policies, familiarize yourselves with the resources available to you on campus and get to know our curriculum. We have nursing advisors available to help you plan your schedule each semester. Please be sure you read the admissions requirements carefully so that you can complete all the necessary paperwork prior to the deadline for admission.

Once again, welcome to our School of Nursing. Please let us know how we can assist you in your pursuit of higher education in nursing.

Sincerely,

Regina C. Aune

Regina C. Aune, PhD, RN, CLNC, FAAN
Dean, College of Nursing and Health Sciences
Texas A&M International University

B. ABOUT THE CANSECO SCHOOL OF NURSING

1. HISTORICAL OVERVIEW

Summer 1994	Approved by BOR, THECB for RN/BSN program Initial accreditation RN/BSN by State Board of Nurse Examiners
Spring 1995	First class of 32 RN/BSN students admitted
Spring 1996	First BSN graduates Full accreditation RN/BSN by State Board of Nurse Examiners
Spring 1997	Dedication of Canseco Hall Initial accreditation RN/BSN by National League for Nursing Accrediting Commission
Summer 1998	Approval by BOR, THECB for Basic BSN program Initial accreditation Basic BSN by State Board of Nurse Examiners
Fall 1998	Recruitment of faculty and students for Basic Program
Spring 1999	First class of 34 Basic BSN students began coursework Planning authority from THECB for MSN program
Fall 1999	75% of RN/BSN graduates were enrolled in Masters Education
Spring 2000	Second group of 30 Basic BSN students admitted
Spring 2001	Third group of 32 Basic students admitted First group of Basic BSN students graduate 86% pass rate on NCLEX-RN
Spring 2002	Fourth group of 40 basic nursing students admitted Full accreditation by NLNAC 95% pass rate on NCLEX-RN
Spring 2003	Fifth group of 40 basic students admitted 92% pass rate on NCLEX-RN
Spring 2004	Sixth cohort admitted 95% pass rate on NCLEX-RN
Summer 2004	First summer group of 20 basic BSN students admitted
Fall 2004	Initial approval of MSN program First cohort of 14 admitted
Spring 2005	Seventh Cohort admitted 100% pass rate on NCLEX-RN
Summer 2005	Second summer cohort admitted
Spring 2006	First graduates of the basic BSN program
Fall 2006	First cohort of 14 MSN graduates complete their FNP curriculum
Summer 2007	Dr. Susan S. Walker, Professor and second Director, of the Canseco School of Nursing retires; Ms. Natalie Burkhalter, RN, MSN, APN, Associate Professor, designated Interim Dean of the College of Nursing and Health Sciences
Summer 2008	The Canseco School of Nursing becomes the College of Nursing and Health Sciences. SIM Man becomes part of the College's high tech commitment.
Fall 2008	Second cohort of 7 MSN graduates complete their FNP curriculum

Fall 2009

Dr. Regina C. Aune, PhD, RN, CLNC, FAAN, appointed Dean/Professor of Nursing, College of Nursing and Health Sciences, Canseco School of Nursing

2. FACULTY

In Fall 2009, the Canseco School of Nursing operates with thirteen full-time faculty, and ten part time clinical adjunct faculty

3. STUDENTS

Since its inception in Spring 1995, the SON has grown from an RN/BSN program with enrollment of 32 RNs seeking a Baccalaureate Degree to a full inventory of programs at Basic, RN/BSN and MSN levels. Fall 2006 enrollment includes 307 Nursing majors at TAMIU and a projected 150 prospective students completing pre-Nursing coursework elsewhere.

4. SCHOLARSHIP

Scholarly activities of the School of Nursing include publication of journal articles and book chapters, presentations by faculty and/or students at local, national and international professional meetings, and applied research. The School has also actively sought grant support and has received funding from both private foundations and governmental sources.

5. CLINICAL PRACTICE

A majority of the faculty of the Canseco School of Nursing hold advanced practice credentials and maintain active practice as required to renew those credentials. Ongoing involvement in clinical practice is essential to effective, up-to-date teaching.

6. COMMUNITY PARTNERSHIPS

The School of Nursing is an integral part of Laredo's effort to provide accessible, high quality health care in the mid-Rio Grande border region. The growth and development of the School has been made possible by outstanding financial support (currently in excess of \$5 million) received from the Laredo community. The Lamar Bruni Vergara Trust and Mercy Health Systems of Texas provided funding for program development, and faculty and student support. Spacious, state-of-the-art facilities in Canseco Hall and an endowed scholarship fund serve as a family memorial to a noted Laredo physician and his wife, Dr. F.M. and Mrs. Consuelo Canseco. Other endowed scholarships honor Laredo families: Hurd, Epstein, and Carolyn Josey. Local philanthropic organizations also offer scholarships to our nursing students including: LMC Auxiliary and Women's City Club.

The School of Nursing, in turn, is highly aware of its responsibility to prepare nurses to help meet the health care needs of Laredo's culturally diverse population. The innovative, community-based curriculum combines mastery of acute clinical nursing competencies with effective community development strategies. Students and faculty work in community agencies and neighborhoods alongside other health care professionals throughout the program. In the final semester, two unique courses provide an opportunity for students to synthesize their knowledge. One course, Emergent Care Nursing, prepares nurses to meet the high demand for trauma care and intensive care in Laredo, the nation's busiest inland port. During this course, students gain

competence in both Advanced Cardiac Life Support and the Trauma Nursing Core Curriculum. Clinical experiences include disaster preparedness and terrorism training, preparing them to become the leaders of emergency nursing in Laredo. At the same time, students are enrolled in the other synthesis course, International Health Nursing, which challenges them to become active global citizens and advocates for “health for all.”

C. ACCREDITATION

The BSN program has full accreditation from the Texas Board of Nurse Examiners and the NLNAC. The MSN program received full approval from the Texas Board of Nurse Examiners in April, 2007; accreditation was reaffirmed in April, 2008.

II. PHILOSOPHY AND GOALS

- A. TEXAS A&M INTERNATIONAL UNIVERSITY
MISSION STATEMENT
- B. PHILOSOPHY OF THE COLLEGE OF NURSING AND
HEALTH SCIENCES
- C. CONCEPTUAL FRAMEWORK
- D. SCHOOL OF NURSING PROGRAM OBJECTIVES

A. TEXAS A&M INTERNATIONAL UNIVERSITY MISSION STATEMENT

Texas A&M International University (TAMIU), a member of The Texas A&M University System, prepares students for leadership roles in their chosen profession in an increasingly complex, culturally diverse state, national, and global society. A&M International provides students with a learning environment anchored by the highest quality programs built on a solid academic foundation in the arts and sciences. To fulfill its mission, the University offers a range of baccalaureate and master's programs and the Doctor of Philosophy degree in International Business Administration. In addition to offering excellent undergraduate and graduate programs, the University pursues a progressive agenda for global study and understanding across all disciplines.

Through instruction, faculty and student research, and public service, Texas A&M International University embodies a strategic point of delivery for well-defined programs and services that improve the quality of life for citizens of the border region, the State of Texas, and national and international communities.

B. PHILOSOPHY OF THE COLLEGE OF NURSING AND HEALTH SCIENCES

The Faculty believe that the College of Nursing and Health Sciences of Texas A&M International University is in a unique position, as a result of geographic location and institutional affiliation, to prepare professional nurses to improve the well-being of complex and diverse populations. As an international city spanning the border between the United States and Mexico, Laredo (with its sister city Nuevo Laredo) offers a culturally, economically and politically unique setting in which health problems originating in either country merge as residents of Texas and Mexico live and work together. Faculty believe that professional nursing education must address a wide range of health beliefs in combination with dynamic political, social, economic and legal issues. The border setting provides students the opportunity to appreciate that people's health beliefs often vary in significant and meaningful ways, that solutions for health problems are defined by radically different health care contexts, and that measures for resolving or managing health problems are affected by economic and social value systems. Despite the complexities inherent in such an environment, the Faculty are convinced that this bicultural setting affords an ideal opportunity for students to learn to appreciate that clients are unique, worthy of respect, and capable of making their own life choices about matters of health and illness.

The Faculty believe that professional nurses have distinct educational needs and practice responsibilities. As adult learners, students enter the program with a foundation of knowledge and their own unique values, understandings and experiences. The Faculty believe that nursing education is a lifelong process that includes formal and informal components, and that teaching and learning are reciprocal activities during which faculty and students learn from each other. To effectively serve a diverse population and to address rapid changes in health care systems and treatment, nurses must develop critical thinking skills which will enhance creative and flexible problem solving within their own practice. The Faculty believe that diverse and changing health care needs can best be met by practice based on theory and research that is continually evaluating and modifying the standards of care. The Faculty of the School of Nursing are committed to educating outstanding clinicians, scholars, health advocates, mentors and leaders who will be instrumental in addressing the health care needs of communities. The Faculty believe that strong communication skills are essential to enactment of these roles, and that professional nurses must

also be increasingly concerned with the ethical, legal, political and socioeconomic dimensions of their practice. The Faculty believe it is essential to promote the personal development and educational advancement of its students, to provide opportunities for research and creative expression, and to remain highly responsive through its educational program to the community. The Faculty believe that nurses graduating from this program will be instrumental in realizing the University mission of improving the quality of life for citizens of South Texas and nearby international communities.

Nursing is a learned and complex therapeutic process through which the nurse engages individuals, families, or communities for the purpose of meeting health needs. Nurses understand health and illness to be relative conditions of human existence involving intricate balances between life experiences and biological phenomena. To be effective in the nursing role, the nurse is required to develop, synthesize, and work from a broad framework based on the humanities and the social and biological sciences. Furthermore, the unique nature of nurse-client relationships is derived from a broad understanding of persons within their environments and the therapeutic use of self. Effective nurses design and implement innovative strategies that reflect caring through understanding, respect, appreciation, involvement, and advocacy.

Nursing roles and responsibilities in the 21st Century are likely to change significantly from nursing practice as we know it today. The current foundation of health information on which nurses must base their practices is often unclear concerning how many health problems can be prevented. Until research can provide explanatory and predictive models on which to build effective preventive strategies, much nursing time and effort will continue to be devoted to caring for people with health problems and helping people either regain health status jeopardized by illness or adapt to significant, permanent changes in health. Although the present structure of the US health care system has dictated for decades that most of the nursing care provided to ill persons be delivered within institutional settings, current trends suggest that nurses will be increasingly involved in broader community-based health care models and systems. Institution-based care in the future will serve as a short-term, highly technical, and procedure-driven component of the larger community-based system. Nurses will be responsible for overseeing the health care of members of communities over prolonged time intervals. Demands for such changes in the nurses' role will require added emphases on analytic, education, leadership, and scholarship functions. It is also anticipated that nurses in the emergent health care system will need to provide and manage health care in ways that are cost effective, consumer-oriented, and likely to result in optimal health.

There are many challenges which lie ahead for professional nurses. Community-based health care, including care provided in hi-tech institutions, will have to be culturally appropriate and connected with persons at some very personal and intimate level to be effective. Nursing education in a border community presents opportunities for the advancement of nursing practice through the examination and exploration of concepts of culture and human caring.

C. CONCEPTUAL FRAMEWORK

The conceptual framework of the Canseco School of Nursing is portrayed as a pair of hands joined within a globe. The globe signifies the international context of the nursing program. The hands are joined in such a way that the individual fingers are intertwined and hidden within the clasp of the two hands.



At one level, the clasped hands represent the interaction between nurse and partner, be that client, community, family or other health care provider. In this interchange, the fingers of the two hands become so intertwined that it becomes difficult to determine which fingers derive from which hand.

At another level, the two hands represent the two foci of the curriculum: expertise in clinical nursing care and nursing in partnership with communities. Together these two capacities can effect dramatic changes in the world with which they interact.

The hand clasp can be loosened somewhat to reveal individual fingers that represent the strands of the nursing curriculum, as described by the nine curricular objectives: (1) a broad base of knowledge; (2) cultural competence; (3) critical thinking and the research process; (4) the nursing process; (5) health promotion; (6) professional nursing roles; (7) societal trends; (8) law and ethics; and (9) life-long learning.



The nine strands are defined within the context of the overall program philosophy of cultural diversity and community partnership, as follows:

- (1) **A broad base of knowledge** includes grounding in the natural and social sciences, the liberal arts as well as awareness of tradition and prior learning and experience in nursing.
- (2) **Transcultural nursing and cultural aspects of care** include awareness of individual and cultural variations in health status, human development, values, beliefs, attitudes, history and environment and how these differences affect the need for and acceptance of nursing care within a global context.
- (3) **Critical thinking** includes the use of problem solving, clinical judgment and the research process to apply appropriate principles for the resolution of ever changing societal and professional problems. It includes a search for structural causes of illness outside the narrow confines of a biomedical paradigm.
- (4) **The nursing process** involves planning, implementing and evaluating theory-based and culturally-appropriate nursing care in collaboration with individuals, families and communities. It requires an understanding of necessary linkages to other sectors and levels - i.e., state, regional, national, international.
- (5) **Health promotion** strategies incorporate the three modes of Transcultural nursing care (preservation, accommodation and repatterning) to promote health of individuals, families and communities within the limits of culturally acceptable behaviors.
- (6) **Professional nursing roles** of the baccalaureate nurse include those of provider of care, health care team member/collaborator, leader/manager, teacher, scholar, advocate, activist, mentor and entrepreneur.
- (7) **Societal trends** involve analysis of the impact of evolving socioeconomic and political forces on nursing practice and health care systems. Poverty is examined as a primary cause of illness.
- (8) **Legal and ethical principles** that guide professional nursing practice include analysis of the Texas Nurse Practice Act, standards of professional nursing and its specialty organizations, and the application of nursing codes of ethics and statutory and case law and acknowledgment of professional responsibility to strive for systemic change.
- (9) **Life long learning** is a manifestation of professional accountability that involves incorporation of updated knowledge of nursing and health care standards with ongoing service to and empowerment of the community.

D. SCHOOL OF NURSING PROGRAM OBJECTIVES

BSN Program

During the course of studies, the student will have had opportunities to:

1. Synthesize knowledge from the arts, humanities, sciences, and other disciplines in developing a framework for nursing knowledge and practice.
2. Explore needs for nursing care as functions of variations in health status, developmental processes, values, beliefs and attitudes, history, and environment.
3. Use critical thinking, clinical judgment, problem-solving, and the research process in the development of nursing knowledge and practice.
4. Plan, implement, and evaluate theory-based and culturally-appropriate nursing care with individuals, families, and communities.
5. Synthesize health promotion strategies in the development of nursing practice.
6. Develop professional nursing practice frameworks and roles, including the provider of care, health care team member/collaborator, leader/manager, teacher, scholar, advocate, activist, mentor, and entrepreneur.
7. Evaluate the impact of evolving socioeconomic and political forces on nursing practice and health care systems.
8. Synthesize legal and ethical principles in the development of nursing practice.
9. Articulate a commitment to life-long learning, professional accountability, and community service.

Reaffirmed 2009

MSN Program

Upon completion of the Master of Science in Nursing course of study, graduates will be prepared to:

1. Critically analyze, interpret, and utilize appropriate knowledge, research, and theories to meet the health care needs of diverse urban and rural patient/client populations across the life span.
2. Collaboratively plan with the individual/family and other health care providers to provide holistic health care within the context of the individual's/family's culture and worldviews.
3. Contribute to the advancement of the nursing profession through evidence-based research and advanced practice nursing.
4. Synthesize the leadership, management, negotiating, teaching/coaching, and consultation roles to foster continual improvement in health care to meet changing societal and environmental needs.
5. Operationalize ethical, legal, political, and economic principles in application to health care delivery across the lifespan.
6. Act as advocates for advanced practice nursing through a commitment to lifelong learning and community service.

Reaffirmed 2004

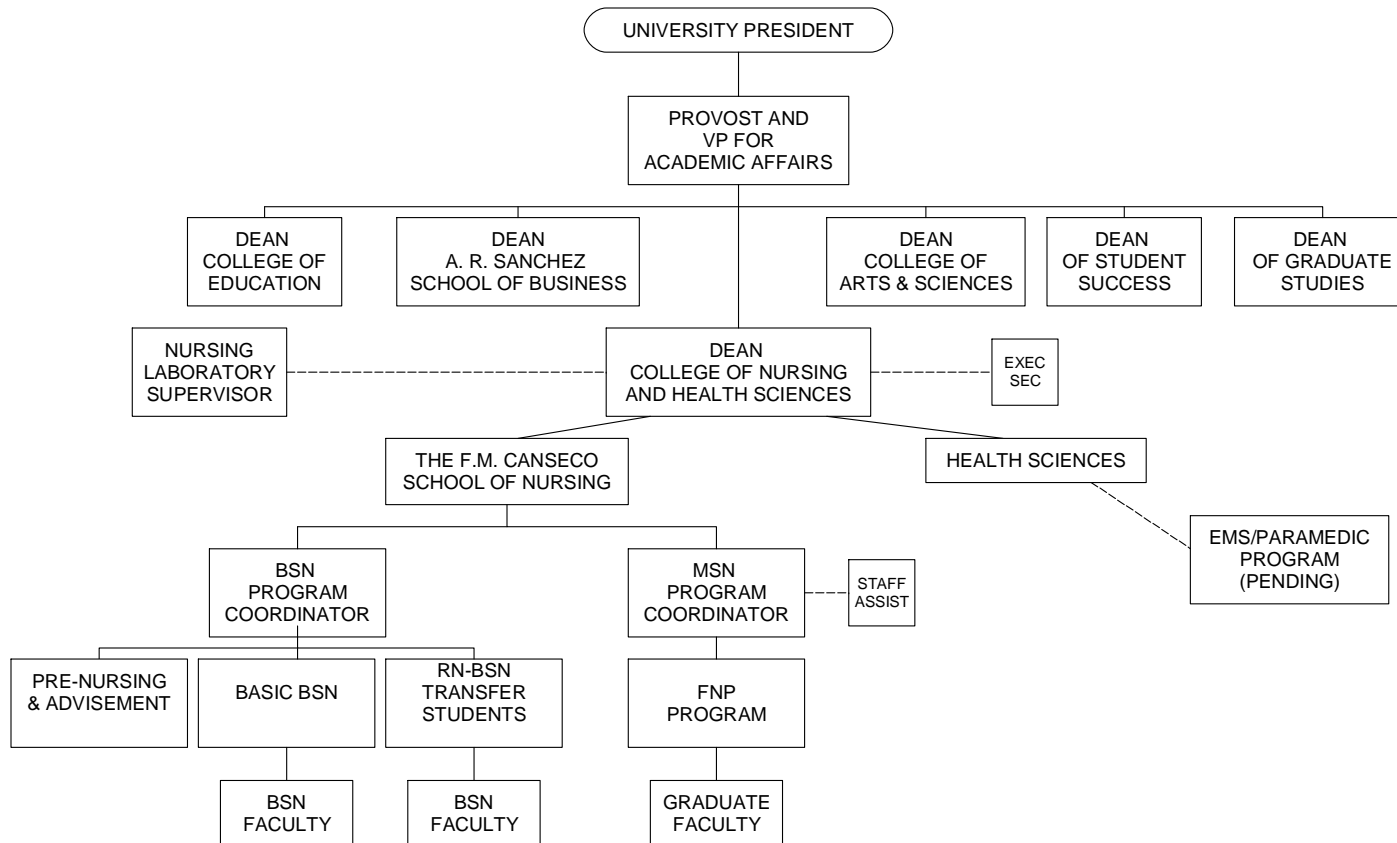
III. ORGANIZATIONAL STRUCTURE

- A. TEXAS A&M INTERNATIONAL UNIVERSITY
FUNCTIONAL ORGANIZATIONAL STRUCTURE**

- B. COLLEGE OF NURSING AND HEALTH SCIENCES
ORGANIZATIONAL CHART**

B. COLLEGE OF NURSING AND HEALTH SCIENCES ORGANIZATIONAL CHART

TEXAS A&M INTERNATIONAL UNIVERSITY COLLEGE OF NURSING AND HEALTH SCIENCES ORGANIZATIONAL STRUCTURE FISCAL YEAR 2009-2010



Rev. 12/09

IV. FACILITIES

- A. NURSING ADMINISTRATION OFFICES AND CLASSROOMS
- B. SUE AND RADCLIFFE KILLAM LIBRARY
- C. INTERNATIONAL LANGUAGE INSTITUTE
- D. COMPUTER FACILITIES AND SERVICES
- E. CLINICAL SITES

A. NURSING ADMINISTRATION OFFICES AND CLASSROOMS

The School of Nursing is located in Canseco Hall (CH), on the East side of the TAMIU campus. The main office of the School of Nursing and that of the Director are in CH 315 and the Graduate Program coordinator's office is in CH 312. Teaching laboratories, classrooms, and the computer laboratory are located on the first floor of the building. Plans include expansion to the second floor of the building.

B. SUE AND RADCLIFFE KILLAM LIBRARY

[\(http://library.tamtu.edu/\)](http://library.tamtu.edu/)

Overview of Killam Library

Students and faculty at Texas A&M International University benefit from an attractive library facility that is well equipped to handle traditional print library resources as well as the rapidly expanding electronic library services. It houses over a quarter of a million bound volumes, one million microfiche and microfilm and over 50,000 state and federal documents. Library users have access to over 1,400 print subscriptions and approximately 29,000 electronic journals in full text or full image. Other research resources include over 46,000 electronic books.

The Texas A&M International University library belongs to TexShare, a state-wide resource sharing network featuring joint electronic databases, and the following state-wide services: an interlibrary loan agreement supported by a courier service and Internet document delivery and a universal library ID card. The Killam Library is also a member of OCLC, the largest library network in North America, which makes the collections of other institutions available to our library through interlibrary loan. The library also belongs to a consortium of other Texas A&M University System libraries, which shares the Voyager Integrated Library System. More information on the Killam Library is available on the library web page (<http://library.tamtu.edu/>).

Your Library Account

Your TAMIU ID card is what you will use to check out books and other materials. You can access your library account at any time by using RIO, the online catalog, and clicking on the little maroon tab "PATRON". You will log onto your account by using your TAMIU ID number and your last name. Here you can see what items you have checked out, when they are due, and you may also renew them yourself without coming into the library. You can also check here at any time to see when your books are due, and at the end of each semester it is a good idea to make sure that all of your items are returned, so that your grades are not delayed and you do not accrue any fines.

Borrowing & Renewing

Library materials can be checked out at the Circulation Desk on the 1st floor. You may also renew items there, as well as online. (see above: "Your Library Account".)

The number of books you may have checked out at one time, and your loan periods are listed below:

Patron Status	Number of Books	Loan Period	Renewals
Undergrad	20	28 days	2
Graduate	40	56 days	1

Please call (956) 326-2112 with any questions about borrowing and renewing.

Library Research and Research Help

The librarians and staff of Killam Library are committed to guiding our students to the scholarly resources they need for their research papers and projects. The reference desk, located on the 1st floor, is staffed during all hours the library is open, including week-ends, and we encourage you to stop by with your questions. Your professor may request an information literacy instruction session for your class, and you may also schedule an appointment with a librarian for a one-on-one research consultation. The library has a presence in the course management system, Angel, so if you have a class with an Angel component, you can find links to library resources there.

When looking for journal articles, you will usually connect to an online database. The database resources for Nursing are found on the library's web page, listed under Nursing and Medicine on the subject pages list. The main databases for nursing research are listed below:

DATABASES (and Host) for Nursing	Description
CINAHL Plus with Full Text (EBSCO):	Comprehensive source of full text for nursing & allied health journals, providing full text for more than 560 journals indexed in CINAHL. With more than 600,000 full-text articles, it is the definitive research tool for all areas of nursing and allied health literature.
PubMed - National Library of Medicine (NLM)	PubMed is a service of the U.S. National Library of Medicine that includes over 18 million citations from MEDLINE and other life science journals for biomedical articles back to 1948. PubMed includes links to full text articles.
MEDLINE (EBSCO)	MEDLINE is the largest component of PubMed (http://pubmed.gov), the freely accessible online database of biomedical journal citations and abstracts created by the U.S. National Library of Medicine.

The library also subscribes to 11 other databases on health subjects, and these are listed below. If you need help finding your articles and searching these databases, please don't hesitate to go to the reference desk with your questions and we will be happy to help you. You may also reach us by phone at all hours the library is open by calling 326-2138.

DATABASES for Nursing	Description
Alt Health Watch - (EBSCO)	Focuses on the many perspectives of complementary, holistic and integrated approaches to health care and wellness.
Cochrane Library (Wiley Interscience)	The Cochrane Library on evidence-based medicine. Please note: Under our subscription the abstracts, author's conclusions and plain language summaries are available, but not the full report.
Consumer Health Complete (EBSCO)	Full text coverage of topics such as aging, cancer, diabetes, drugs & alcohol, fitness, nutrition & dietetics, children's health, men & women's health, etc.
Health Reference Center Academic (Gale)	Integrates the full text and images of respected nursing, allied health and medical journals; consumer health magazines; newsletters; pamphlets; newspaper articles; topical overviews; and reference books.
HealthSource: Nursing/Academic (EBSCO)	Provides nearly 550 scholarly full text journals focusing on many medical disciplines. Also features abstracts and indexing for nearly 850 journals.
Health Source: Consumer Edition	Collection of consumer health information on many health topics including the medical sciences, food sciences and nutrition, childcare, sports medicine and general health. Full-text for over 130 consumer health magazines.
Health & Wellness Resource Center (Gale)	Provides integrated access to medical, statistical, health, and wellness information through a Web interface.
Medic Latina	Spanish language collection of medical research and investigative journals published by renowned Latin American medical publishers providing access to full text for nearly 100 peer-reviewed medical journals in Spanish.
Natural & Alternative Treatments	Coverage includes herbs and supplements, drug-herb and drug-supplement interactions for a wide array of drug categories, alternative therapies, and homeopathy.
Science Direct - (Elsevier)	World's leading full-text scientific database offering articles/chapters from more than 2,500 peer-reviewed journals and more than 10,000 books.

Virtual Health Library	Multi-database search engine that will search Medline (1966-present), LILACS (Latin American & Caribbean Health Sciences, 1982-present), plus databases of the Pan American Health Organization and the World Health Organization. Medline is in English, LILACS in Spanish and English, other databases are in Spanish, English and/or Portuguese. No full text, citations and abstracts only.
-------------------------------	---

Study Areas

There are 10 enclosed group study rooms with doors on the 3rd and 4th floors. Groups have priority over individuals, and groups of TAMIU students and employees have priority over other groups in the study rooms. Groups may also use the study tables on the 2nd and 3rd floors, but the 4th floor has been designated as a library quiet area for individual study. The Great Room on the 3rd floor has been designated as a reading room for the library during regular library hours.

Course Reserves

At times, your professors may put books or other materials for your class on reserve in the library. The professor designates the time limit that you may check out these materials, generally for use while in the library, but occasionally for a longer period. Please ask for course reserve materials at the Circulation Desk on the 1st floor.

Interlibrary Loan

Books and journal articles not owned by Killam Library may be requested without charge from other libraries for use by TAMIU students, faculty, and staff. Requests can be made online using the Interlibrary Loan link on the library web page.

Photocopying

Photocopy machines are located on the 1st floor of the library. Copies cost \$.10 per page. Two machines accept cash and print cards, the other two are cash only. The print card machine is located on the 1st floor across from the Circulation Desk. The microform reader-printers in the Microforms Area accept dimes and print cards. Change is available at the Circulation Desk. There is also a Copy Center located on the 2nd floor of the library which is open from Monday to Friday, 8:00am - 5:00pm. For a small fee you may have copies made for your school and personal projects. (Please visit to check with them for current prices.)

Wireless Internet Access

Wireless Internet access is available inside the Killam Library. To use wireless you will need to have a wireless card in your laptop and a TAMIU email account. When you receive the signal on your laptop that it is active, you will login using your TAMIU email name and password. If you have any problems or questions about wireless Internet access, please go to the OIT help desk, KL 257, or call 326-2310.

C. INTERNATIONAL LANGUAGE INSTITUTE

The [International Language Institute](#) (ILI) offers a dynamic language program which includes English as a Second Language (ESL), Spanish, Arabic, French, Italian, Japanese, Mandarin (Chinese), and other language courses. The ESL program is the most intensive and structured of all the course offerings. All instructors have a vast experience in teaching ESL or their respective other languages, and are unquestionably dedicated to the students' learning. Our courses are intended for the serious student who wants to learn a target language within a short period of time. The information on this website is specifically designed for prospective students who would like to obtain general information about the program. The site also describes expected program outcomes and course descriptions

D. COMPUTER FACILITIES AND SERVICES

The School of Nursing has adequate and up-to-date computer hardware and software resources. All faculty offices have a computer and printer access, with direct access to the Internet and a variety of computer-based services, both within the School of Nursing and the University. School of Nursing faculty can access Killam Library services from their offices, including CINAHL (the online Cumulative Index of Nursing and Allied Health) and are directly connected with the rest of the University's staff and faculty computers through e-mail.

Student computer labs are available to all students. The computer labs are located in the Cowart Hall (C building), in the Sue & Radcliffe Killam Library second floor, in Pellegrino (PH) and in Canseco Hall (CH). All computers in the labs have a log on screen. To receive a username and password, one must setup an email for life account at <https://dusty.tamtu.edu/welcome.aspx>.

The computer laboratory of the School of Nursing has 48 computers to be used for a variety of computer-assisted tutorials as well as giving students access to the Internet, Email and word-processing for the preparation of reports and projects. All computers are networked through fiberoptics building-to-building and floor-to-floor.

The School of Nursing has access to telecommunications links to the School of Nursing of the University of Texas Health Science Center at San Antonio and to the Texas A&M University System. These resources increase student and faculty opportunities for collaboration and enrichment.

Support staff for computer education, troubleshooting and repairs are available within the School of Nursing and from the University. All staff are knowledgeable about computer utilization, with varying levels of expertise. Specialized knowledge and skills are available from the University Office of Instructional Technology (OIT) help desk. OIT has solutions for problems as simple as network access and computer trouble shooting to complex instructional design and advanced telecommunications applications to facilitate the learning process.

Wireless Access through TAMIU "Unplugged" (authentication required)

TAMIU's [Office of Computer and Telecommunications Services](#) strives to provide it's students, faculty, and staff with any available resources that can improve overall productivity. To this end, we have installed publicly accessible wireless access points around the University campus. The purpose of this venture is to provide student, faculty, and staff access to the Internet via a wireless connection untethered by the constraints of a typical network connection.

OIT strives to provide 24-hour wireless access; however, access may be limited by such things as, but not limited to, physical access to buildings during hours outside standard operation of the University, network upgrades, maintenance, etc. The speed of a wireless connection is around 11mbps; however, all users on a segment of the wireless network share the available bandwidth so performance varies according to the number of users currently online.

[TAMIU Email for Life](#) for Students

All students **must** set-up a TAMIU email account. TAMIU Email for Life is a program that provides current and former students a web-based, life-long e-mail account. With this account, you can receive e-mail via the web from any computer with Internet access. There are several other features such as on-line calendar, address book, and notification of upcoming University events. With the TAMIU email for life your account can be used as a primary or secondary email address in which you can read or respond to your email via the web. Your e-mail address will be <yourid>@dusty.tamiu.edu. For more information on TAMIU e-mail accounts refer to URL: <http://oit.tamiu.edu>.

[Uconnect](#)

Uconnect is a single signon portal that provides the TAMIU community with the ability to access, send and receive information and collaborate in a secure and reliable way. This communication tool is customized according to a user's role such as student, faculty and staff allowing the filtering of information that is only targeted to each role.

Because Uconnect is a single signon portal, users now have the ability to access their TAMIU email, eLearning courses, Banner links, HR Single Sign-On without having to visit different web pages and entering their login credentials repeatedly. With the click of a button, users can automatically connect.

E. CLINICAL SITES

Inpatient Facilities/Hospitals	Community-Based Settings
<p>Ben Taub Hospital Trauma Center (affiliation with Prairie View A&M)</p> <p>Border Region Mental Health Mental Retardation</p> <p><i>Doctors Hospital of Laredo</i></p> <p>Driscoll Children’s Hospital</p> <p><i>Laredo Medical Center</i></p> <p><i>Laredo Specialty Hospital</i></p> <p>Providence Surgical Hospital</p> <p>San Antonio State Hospital</p> <p style="text-align: center;">Long Term Care Facilities</p> <p><i>Regents Long Term Care</i></p> <p>Retama Manor South</p> <p><i>Retama Manor West</i></p>	<p><i>Bethany House</i></p> <p><i>Border Region MHMR</i></p> <p><i>City of Laredo Health Department</i></p> <p>City of Laredo Housing Authority</p> <p>City of Laredo Fire Department</p> <p><i>Gateway Community Health Center</i></p> <p><i>Laredo Independent School District</i></p> <p>Laredo Family Planning</p> <p><i>Mercy Ministries Primary Care</i></p> <p>Ruthe B. Cowl Rehabilitation Center</p> <p>Sacred Heart Children’s Home</p> <p>Santa Rita Home Health</p> <p><i>Texas Department of Health Services</i></p> <p>Torres Home Health</p> <p><i>United Independent School District</i></p>
Adult Day Care	Additional FNP Clinical Facilities
<p>Arcos Iris Adult Day Care</p> <p>Santa Maria Adult Day Care</p> <p>Santa Rita Adult Day Care</p>	<p><i>City of Laredo Employee Health</i></p> <p><i>Laredo Health Coalition</i></p> <p><i>LMC & DH Ambulatory Centers</i></p> <p><i>Private physician’s clinics/offices</i></p> <p style="text-align: center;"><i>*Italics indicates BSN / MSN clinical site</i></p>

V. STUDENT LIFE

A. STUDENT RIGHTS

B. STUDENT RESPONSIBILITIES

C. ACADEMIC HONESTY

D. STUDENT HEALTH & SAFETY

E. CLINICAL GUIDELINES

F. STUDENT ORGANIZATIONS

G. STUDENT-FACULTY COMMUNICATION

H. FINANCIAL AID OPPORTUNITIES

A. STUDENT RIGHTS

1. Students should be encouraged to develop the capacity for critical judgment and engage in a sustained and independent search for truth.
2. The freedom to teach and the freedom to learn are inseparable facets of academic freedom: students should exercise their freedom with responsibility.
3. Each institution has a duty to develop policies and procedures which provide and safeguard the student's freedom to learn.
4. Under no circumstances should a student be barred from admission to a particular institution on the basis of race, creed, sex, or marital status.
5. Students should be free to take reasoned exception to the data or views offered in any course of study and to reserve judgment about matters of opinion, but they are responsible for learning the content of any course of study for which they are enrolled.
6. Students should have protection through orderly procedures against prejudiced or capricious academic evaluation, but they are responsible for maintaining standards of academic performance established for each course in which they are enrolled.
7. Information about student views, beliefs, and political associations which instructors acquired in the course of their work should be considered confidential and not released without the knowledge or consent of the student.
8. The student should have the right to have a responsible voice in the determination of the curriculum.
9. Institutions should have a carefully considered policy as to the information which should be a part of a student's permanent educational record and as to the conditions of this disclosure.
10. Students and student organizations should be free to examine and discuss all questions of interest to them, and to express opinions publicly and privately.
11. Students should be allowed to invite and to hear any person of their own choosing, thereby taking the responsibility of furthering their education.
12. The student body should have clearly defined means to participate in the formulation and application of institutional policy affecting academic and student affairs.
13. The institution has an obligation to clarify those standards of behavior which it considers essential to its educational mission and its community life.
14. Disciplinary proceedings should be instituted only for violations of standards of conduct formulated with significant student participation and published in advance through such means as a student handbook or a generally available body of institutional regulations. It is the responsibility of the student to know these regulations. Grievance procedures should be available for every student.
15. As citizens and members of an academic community, students are subject to the obligations which accrue them by virtue of this membership and should enjoy the same freedoms of citizenship.
16. Students have the right to belong or refuse to belong to any organization of their choice.
17. Students have the right to personal privacy in their living space to the extent that the welfare of others is respected.
18. Adequate safety precautions should be provided by schools of nursing, for example, to and from student dorms, adequate street lighting, locks, etc.
19. Dress code, if present in school, should be established by student government in conjunction with the school director and faculty, so the highest professional standards possible are maintained, but also taking into consideration points of comfort and practicality for the student.
20. Grading systems should be carefully reviewed periodically with students and faculty for clarification and better student-faculty understanding.

B. STUDENT RESPONSIBILITIES¹

Students should assume responsibility for:

1. Representative participation in curriculum development by:
 - attending all scheduled meetings
 - preparing ideas, comments, reactions, and suggestions
 - sharing ideas, comments, reactions, and suggestions
 - polling students for their views, comments, reactions, and suggestions
 - formulating mechanisms to increase input
 - following through with assignments regarding curricular activities
 - developing jointly with faculty policies for grading, promotion, and retention

2. Participation in curriculum implementation by:
 - attending classes
 - following through with class and laboratory assignments
 - preparing in advance of scheduled classes and laboratory sessions
 - maximizing all learning opportunities
 - resisting a focus limited to minimal achievement
 - sharing learning experiences with peers
 - striving constantly to broaden their general education base
 - transferring previous learning
 - fostering effective relationships with members of the interdisciplinary health team
 - abiding by the established policies and procedures
 - assuming responsibility for their own learning experiences
 - seeking out new and different learning experiences
 - finding opportunities for decision making, independent judgment, and self-direction
 - operationalizing the philosophy and conceptual frameworks
 - contributing to research and scholarly activities.
 - preparing one's own projects, papers, thesis, dissertation, and other assignments
 - maximizing learning through independent study

3. Participation in the evaluation of the curriculum by:
 - appraising self in relation to stated course, level, and end-of-program behavioral expectations
 - appraising faculty in relation to their facilitation of the meeting of stated course, level and program goals

¹Adopted from the NLN publication by Dorothy Ozimek and Helen Yura. Students Have Responsibilities as Well as Rights

C. ACADEMIC HONESTY

Article 6. Academic Conduct

As a member in an academic community, students at Texas A&M International University are expected to exhibit a high level of honesty and integrity in their pursuit of higher education, be mature, be self directed and be able to manage their own affairs. Students who are unwilling to abide by these basic expectations will find themselves facing academic and/or disciplinary sanctions. Students are expected to share in the responsibility and authority with faculty and staff to challenge and make known acts that violate the [TAMIU Honor Code](#). For more information on the Honor Code, please visit the Office of Student Affairs website. TAMIU Faculty has the discretion to impose grade penalties as deemed necessary. For more information, please visit the TAMIU Faculty Handbook, Section 5.7 Student Violations of Academic Integrity (cheating, plagiarism).

Section 6.01 Violations of Academic Conduct

Academic dishonesty is any act, or attempt, which gives an unfair advantage to the student. Academic dishonesty includes, but is not limited to:

- (a) Plagiarism – The act of passing off some other person’s ideas, words, or works as one’s own. It includes, but is not limited to, the appropriation, buying, receiving as a “gift”, or obtaining, by any other means, another’s work for the submission as one’s own academic work. Examples include, but are not limited to:
 - (i) If, in a paper or assignment, you include material that you researched in a book, magazine, newspaper, and/or on the Web, you MUST cite the source. If you do not, you are committing plagiarism.
 - (ii) If you copy somebody's test answers, take an essay from a magazine and pass it off as your own, lift a well-phrased sentence or two and copy and paste them without crediting the author or using quotation marks, or even pass off somebody's good ideas as examples of your own genius, you are committing plagiarism;
 - (iii) If you borrow/lend a term paper, hand in, as one's own work, a paper purchased from an individual or off the Internet, or submit, as one's own, any papers from living group's, club's, or organization's files;
 - (iv) If you hand in the same paper in more than one class without the permission of the instructor.

- (b) Cheating – An act of deception in which a student misrepresents that he/she has mastered information related to an academic exercise. Examples include:
 - (i) copying from another student’s test, lab report, computer file, data listing, logs, or any other type of report or academic exercise;
 - (ii) using unauthorized materials during a test;
 - (iii) consulting a cell phone, text messages, PDAs, programmable calculators with materials that give an advantage over other students during an exam;
 - (iv) using crib sheets or other hidden notes in an examination, or looking at another student's test paper to copy strategies or answers;
 - (v) having another person supply questions or answers from an examination to be given or in progress;

- (vi) having a person other than oneself (registered for the class) attempt to take or take an examination or any other graded activity. In these cases all consenting parties to the attempt to gain unfair advantage may be charged with an Honor Pledge violation;
 - (vii) deliberate falsification of laboratory results, or submission of samples or findings not legitimately derived in the situation and by the procedures prescribed or allowable;
 - (viii) revising and resubmitting a quiz or exam for regarding, without the instructor's knowledge and consent;
 - (ix) giving or receiving unauthorized aid on a take-home examination;
 - (x) facilitating academic dishonesty: intentionally or knowingly helping or attempting to help another to violate the Honor Pledge;
 - (xi) signing in another student's name on attendance sheets, rosters, Scantrons;
 - (xii) submission in a paper, thesis, lab report, or other academic exercise of falsified, invented, or fictitious data or evidence, or deliberate or knowing concealment or distortion of the true nature, origin, or function of such data or evidence;
 - (xiii) procurement and/or alteration without permission from appropriate authority of examinations, papers, lab reports, or other academic exercises, whether discarded or actually used, and either before or after such materials have been handed in to the appropriate recipient;
 - (xiv) collaborating with others on projects where such collaboration is expressly forbidden, or where the syllabus states the default as being one's own work; and
 - (xv) using, buying, selling, stealing, transporting, soliciting, copying or possessing, the contents of an un-administered test, a required assignment or a past test which has, by the professor, not been allowed to be kept by their students.
- (c) Lying – Deliberate falsification with the intent to deceive in written or verbal form as it applies to an academic submission.
- (d) Bribery – Providing, offering or taking rewards in exchange for a grade, an assignment or the aid of academic dishonesty.

Faculty Handbook: Sec. 5.7 Student Violations of Academic Integrity (Cheating, Plagiarism)

Students are expected to maintain high ethical standards in their academic work, and faculty members are expected to maintain the fairness and integrity of course grades. Students who are caught claiming credit for work that they did not do – whether the dishonesty consists of cheating on exams, intentionally plagiarizing papers or course projects, or other forms of academic misrepresentation and dishonesty – can expect to receive failing grades in the course in question. *Faculty members are required to report such serious breaches of academic honesty to their chair, their dean, the Provost and Vice President of Academic Affairs, and the Executive Director of Student Life.*

In addition to grade penalties, students guilty of academic dishonesty may be placed on probation, temporarily suspended, or permanently expelled from the university by the Provost and Vice President of Academic Affairs, as specified in the Student Handbook. The [Honor Council](#) review each case reported to the Provost and Vice President of Academic Affairs and make recommendations.

D. STUDENT HEALTH & SAFETY

1. ADMISSION REQUIREMENTS

In order to be eligible for coursework involving direct patient care experiences all students must provide evidence of current Rubella, Varicella, and DT immunization, PPD or chest X-ray, Hepatitis B vaccines or signed informed refusal, and current physical examination certifying good health/no restrictions.

2. OSHA REQUIREMENTS

A student nurse should:

- Read the OSHA poster at the jobsite.
- Comply with all applicable OSHA standards.
- Follow all employer safety and health regulations, and wear or use prescribed protective equipment while working.
- Report hazardous conditions to the supervisor.
- Report any job-related injury or illness to the employer, and seek treatment promptly.
- Cooperate with the OSHA compliance officer conducting an inspection if he or she inquires about safety and health conditions in the workplace.
- Exercise rights under the Act in a responsible manner.

3. TAMIU DRUG, ALCOHOL, TOBACCO & WEAPON POLICIES

[Alcohol and Other Drugs Policy](#)

The Texas A&M University System policy on Campus alcohol and other drug policy is very clear. The unlawful manufacture, distribution, possession or use of alcohol or other drugs on our Campus or at any University sponsored event by any member of the University community faculty, staff or student is prohibited.

The University strictly enforces the State of Texas underage drinking laws and therefore discourages the possession or consumption of alcoholic beverages by people under the age of 21, on or off campus.

As a condition of employment or enrollment, all TAMIU employees and students are required to abide by the terms of the policy. Violation of the policy will result in disciplinary action, up to and including employee dismissal or student expulsion.

Recognizing the dangers of alcohol and other drug abuse, TAMIU uses alcohol and drug-free awareness programs to inform people about issues and risks of substance use and abuse. Several counseling and treatment resources are available through the Office of Human Resources or through Student Health Services.

[Smoke Free Environment](#) (TAMIU Student Handbook Sec. 9.11)

Texas A&M International University maintains a smoke-free environment on campus to protect the health of students, faculty, and staff. Smoking is prohibited in all University buildings and in university owned or operated vehicles. The smoke-free policy shall apply to all indoor air space including foyers, entryways and classrooms, and individual faculty and administrative offices. Additionally, all outside areas within 30 feet of any University entrance, foyer, balcony, terrace, classroom, or loading dock shall be smoke-free.

Weapons Policy

Firearms and other dangerous weapons are prohibited, by State law and University policy, on the TAMIU campus and at any University sponsored event. Persons in possession of prohibited weapons will be subject to criminal prosecution and University disciplinary action.

E. CLINICAL GUIDELINES

Nursing courses include a variety of clinical activities. Some of these will involve independent application of the theoretical content to the nurse's own practice. Other clinical activities will involve diverse settings in the community.

The purpose of the clinical experience is to provide an opportunity to integrate theory and practice. Students will be placed in a variety of agencies where they will focus on specific activities as indicated by specific clinical assignments. You are reminded that at all times you are in an assigned clinical area you represent the School of Nursing at Texas A&M International University to the agency and to the community.

Attendance during assigned clinical hours is mandatory. The only reason for an absence is an unavoidable emergency. If, for any reason, you must be absent from the clinical, you are required to call the instructor, preferably 24 hours in advance. You may leave a message, but continue to call until you are sure the instructor has received your message. You are also responsible for notifying the clinical agency that you will be absent. Clinical absences will be made up at the discretion of lead instructor of each course and as per the course syllabus.

When you are in the student role you must remain in the student role; do not perform clinical skills unless they are part of your student assignment. To help others respect your role boundaries, you will purchase a student name tag. The name tag can be purchased at the campus bookstore. The name tag is to read as follows:



At all times you are in the student role you are expected to dress in a professional manner. Be sure to check with course syllabus and clinical faculty for appropriate dress guidelines for clinical setting. Bring only items necessary to the clinical setting (paper, pen, guidelines, etc.). Leave purses and all valuables or bulky items safely at home. Wear clothing that will allow you to carry items such as your keys or driver's license in your pocket.

Confidentiality

Nurses must know a great deal about their patients in order to plan comprehensive care. The student role requires that some of this information be shared with faculty and other students. Students and faculty share the burden of carefully protecting the privacy of all persons concerned. Please do not identify clients by name in any written work and do not discuss any client information outside of the assigned seminar or class times.

F. STUDENT ORGANIZATIONS

Students of the Canseco School of Nursing founded a chapter of the Texas Nursing Student Association in Spring 1999, with Ms. Carmen Bruni serving as faculty sponsor. In its first few months, members of the organization participated in several community health fairs and health awareness activities.

All registered nurses in the BSN program are urged to be active members of the ANA/TNA. In this way students can participate in the discussion of professional issues in the district meetings and the students' new knowledge can impact health care delivery in the Laredo area.

During the 2000-2001 Academic year, a student honor society was established in time to induct students from the first graduating class of basic nursing students. This honor society is the precursor of a chapter of the international nursing honor society, Sigma Theta Tau.

Students are also encouraged to explore opportunities to participate in university wide student organizations.

G. STUDENT-FACULTY COMMUNICATION

1. Advisement

Academic advisement for students enrolled in the nursing program at Texas A&M International University is provided by the Dean and nursing faculty. Each student is assigned an advisor upon admission. The advisor's name will be included in the letter notifying the candidate that he/she has been admitted to the School of Nursing. As the student progresses through the nursing program, their assigned advisor is one who works with the student within their grade level. Thus the student is assured a designated advisor from admission through graduation. An up to date list of advisors and advisees is available in the main office of the Canseco School of Nursing.

The role of the advisor is to assist students in: (1) planning their course of study, (2) selecting courses congruent with the nursing degree plan and career goals, and (3) utilizing existing University facilities, such as financial aid services.

Students should meet with their advisors prior to or during each registration period. The purpose of this meeting is to inform the student of current offerings in the nursing program and review the advisee's progress in the degree plan. Each student is responsible for awareness and successful completion of all the degree requirements. In addition, the student is responsible for:

1. Making initial contact with academic advisor
2. Contacting academic advisor for degree planning
3. Contacting academic advisor for preregistration appointment each term.

General education requirements can be reviewed with advisors for the School of Nursing.

Student transcripts will be used on admission to determine which prerequisite courses have been met by previous course work. The designated senior level advisor will review course inventories with the Registrar one semester before graduation, but students should keep a record of their own progress toward meeting graduation requirements. If students are taking required courses at another institution, they need to be sure to have their transcripts sent to the TAMIU Registrar.

2. Student Records

Students' records are maintained in the School of Nursing office. The Open Record Policy is followed whereby students can review their own records within the respective office, but cannot take the record outside the office. All nursing students are responsible for keeping the Registrar's Office and the School of Nursing office informed of any change in name, address, or phone number. In addition, students must provide evidence to the School of Nursing of current nursing licensure (if appropriate), biannual successful BLS Completion, and selected immunizations. These are recorded in the student's file. Such verification has to be made prior to clinical experiences each year.

3. Student Participation on Faculty Committees

Student representatives attend and participate in General Faculty meetings.

4. Bulletin Boards

Two bulletin boards are maintained in the Nursing Resources Center for student faculty communications related to classroom and clinical assignments, projects, deadlines, etc. Please stop by and check the boards for relevant information. In addition, hallway bulletin boards offer information on programs, activities, employment opportunities and current events of interest to nurses and other health care providers.

5. E-mail Communication Policy

All SON students must establish a campus e-mail account, to facilitate essential communications. As a student and alumni you are entitled to a TAMIU Internet Account. If you do not have a TAMIU E-mail Account, here's how to get one now! [TAMIU Email for Life](https://dusty.tamtu.edu/welcome.aspx) (<https://dusty.tamtu.edu/welcome.aspx>) and [Uconnect](https://lumptl.tamtu.edu) (<https://lumptl.tamtu.edu>).

H. FINANCIAL AID OPPORTUNITIES

Refer to the Texas A&M International University's Student Handbook. In addition, students should ask advisors about any special financial aid opportunities, which may be available to nursing students. Students may also find many additional opportunities through the Internet. Students are encouraged to exercise caution if solicited for financial aid opportunities outside of our University Financial Aid office. Many of these "opportunities" are actually phishing attempts to gain your personal information.

VI. BSN CURRICULUM

A. DEGREE REQUIREMENTS

B. COURSE DESCRIPTIONS

C. CURRICULUM

D. SEQUENCE OF COURSES

E. CREDIT FOR PRIOR LEARNING

F. THEORY & CLINICAL LABORATORY HOURS

A. DEGREE REQUIREMENTS

1. **Hours Required:** A minimum of 120 Semester Credit Hours (SCH): 45 hours must be advanced, and fulfillment of degree requirements as specified in the “Requirements for Graduation” and the Dr. FM Canseco School of Nursing.
2. **University Core Curriculum:** 41 Semester Credit Hours (SCH) as outlined in the suggested plans and as specified in the “Requirements for Graduation”. Wellness/Activity requirements met within nursing courses.
3. **Other Education Requirements:** 11 SCH including BIOL 2415, CHEM 1406, and MATH 1342.
4. **Major:** 68 SCH. Nursing courses for the Basic BSN include:

NURSING (NURS)

NURS [1302](#) Cultural Determinants of Health Behavior
NURS [2310](#) Nutrition
NURS [2312](#) Foundations of Professional Nursing
NURS [2413](#) Basic Nursing Skills
NURS [3305](#) Nursing Research
NURS [3314](#) Pathophysiology
NURS [3315](#) Health Assessment
NURS [3525](#) Childbearing Nursing
NURS [3526](#) Child Health Nursing
NURS [3558](#) Psychosocial Nursing
NURS [3590](#) Nurse Role and Practice Transitions (RN/BSN only)
NURS [3665](#) Introduction to Adult Health Nursing
NURS [4290](#) Senior Lab Seminar
NURS [4340](#) International Health Nursing
NURS [4363](#) Leadership, Management and Issues in Nursing
NURS [4570](#) Comprehensive Emergent Care
NURS [4622](#) Community Health Nursing
NURS [4665](#) Advanced Adult Health Nursing
NURS [4199-4799](#) Current Topics

Nursing courses for RN/BSN include:

NURS [1302/3302](#) Cultural Determinants of Health
NURS [3305](#) Nursing Research
NURS [3314](#) Pathophysiology
NURS [3315](#) Health Assessment
NURS [3590](#) Nurse Role and Practice Transitions (RN/BSN only)
NURS [4199-4799](#) Current Topics
NURS [4340](#) International Health Nursing
NURS [4463](#) Leadership, Management and Issues in Nursing
NURS [4570](#) Comprehensive Emergent Care
NURS [4622](#) Community Health Nursing

B. COURSE DESCRIPTIONS

NURS 1302 (Basic Program)/3302 (RN/BSN) Cultural Determinants of Health Behavior

Three semester hours, theory only. (FL/SP)

This course examines relationships between cultural phenomena and health behavior. The meaning and expression of personal health behaviors are explored as consequences of family and community life set within developmental contexts. For both children and adults, the ways and conditions under which individuals define health status are explored. Cultural forces that enhance or reduce the capacity of individuals, families, or communities to maintain health are analyzed. To earn credit, this course must be completed with a grade of “C” or better. Prerequisite: None.

NURS 2310 Nutrition

Three semester hours, theory only. (FL)

Life cycle nutrition is presented in conjunction with diet therapy principles. Nutritional assessments will include the influencing variables of culture, religion, economics, physiology, and medical regimen. Relevant research will be identified. Counseling and other interventions will be taught within the framework of the nursing process. To earn credit, this course must be completed with a grade of “C” or better. (Advanced standing for RNs.)

NURS 2312 Foundations of Professional Nursing

Three semester hours, theory only. (SP)

This course provides the student with an organizing framework for defining professional nursing practice as a learned and complex therapeutic process through which the nurse engages individuals, families, or communities for the purpose of meeting health needs. Nursing philosophies are explored, with special emphasis given to interpretation of the influence of culture and caring on health. Processes deemed essential to professional nursing are emphasized, including informatics, critical thinking, nursing process, therapeutic communication and teaching-learning. Emerging nursing roles are examined within a historical and cultural context. The student is encouraged to consider a broad scope of roles in establishing a professional nurse identity with special attention to ecology, social justice, gender, and other ethical considerations. To earn credit, this course must be completed with a grade of “C” or better. (Advanced standing for Registered Nurses.) Pre- or co-requisites: Admission to Clinical Nursing, BIOL [2415](#) or [2421](#), CHEM [1406](#), NURS [1302](#), NURS [2310](#).

NURS 2413 Basic Nursing Skills

Four semester hours, theory (1 hour) and clinical lab (3 hours equal nine contact hours). (SP)

Provides an introduction to the psychomotor skills involved in providing basic nursing care to a culturally diverse population. Students are exposed to a variety of psychomotor skills applicable to nursing and other disciplines, such as medication administration, body mechanics, vital signs, patient transport, range of motion exercises, hot and cold therapies, stress management, hygiene, skin and wound care, and cardio-pulmonary resuscitation (CPR). In addition, through laboratory and clinical assignments, students gain competence in nursing technique, including comfort measures, positioning and transporting, asepsis and sterile procedures, and therapeutic modalities related to preoperative and postoperative care. Students will be expected to apply critical thinking to their mastery of basic nursing skills. To earn credit, this course must be completed with a grade of “C” or better. (Advanced standing for Registered Nurses; opportunities for challenge exams available for active currently licensed vocational or practical nurses.) Co-requisite: NURS [2312](#). Course fee: \$100.00.

NURS 3305 Nursing Research

Three semester hours, theory only. (FL)

Nursing research focuses on the introductory use of the research process in the development of nursing knowledge and practice. Steps in the research process are detailed. Research questions are explored with regard for theoretical underpinnings, methods of data collection and analysis, and the interpretation and use of study findings in the care of individuals, families and communities. To earn credit, this course must be completed with a grade of “C” or better. Pre or Co-requisite: Statistics (Math [1342](#)), NURS [3590](#) (RN/BSN), Co-requisite: NURS [3558](#) (Basic)

NURS 3314 Pathophysiology

Three semester hours, theory only. (FL)

This course is a comprehensive study of underlying concepts common to the major pathophysiologic processes of the body. The influence of psychoneuroimmunologic mechanisms upon structure and function of the body's adaptive and compensatory needs will be explored. The interaction of age, life-style, culture, gender differences, and intrinsic and extrinsic environmental factors will be examined in relation to these psychoneuroimmunologic mechanisms. Emphasis is placed upon the pathophysiological concepts essential for understanding the rationale for preventive and therapeutic nursing interventions. To earn credit, this course must be completed with a grade of “C” or better. Prerequisites: NURS [2312](#), NURS [2413](#) and all core requirements (for basic students). NURS [3590](#) for RN/BSN. A 2.5 GPA is required for all four science courses. Co-requisites: NURS [3315](#), NURS [3665](#).

NURS 3315 Health Assessment

Three semester hours, laboratory only (six contact hours). (FL)

This seminar and lab course builds upon the theoretical basis for physical, social, psychological, and cultural assessment of clients. The student applies knowledge of pathophysiology of each body system from health assessments to determine nursing diagnoses. Students compile a health history which includes an assessment of cultural values, health beliefs, and caring practices. Legal and ethical issues implicated in obtaining and managing health data are explored. Students practice in a supervised laboratory setting the procedural steps of a comprehensive health assessment. The importance of the professional nursing role in health assessment is examined. To earn credit, this course must be completed with a grade of “C” or better. Prerequisites: NURS [2312](#), NURS [2413](#), and all core requirements (for basic students). NURS [3590](#) for RN/BSN. A 2.5 GPA is required for all four science courses. Co-requisites: NURS [3314](#), NURS [3665](#). Course fee: \$125.00.

NURS 3525 Child Bearing Nursing.

Five semester hours, two theory, three clinical. (SP)

This course focuses on clinical application of the nursing process in providing culturally specific care to childbearing women, newborn infants, and their family systems during the child rearing period. Clinical experiences in an acute care setting provide students with the opportunity to apply primary, secondary and tertiary prevention within childbearing, childrearing family-client systems and women's health across the lifespan. Critical thinking, health promotion, family-centered care and cultural diversity are stressed. Each content area will be covered with appropriate unit and final examination and clinical rotations. In order for a student to pass the NURS 3525 course, the student will have to demonstrate mastery with a test average of 75 and passing clinical experience. Students who cannot achieve these objectives will be required to repeat NURS 3525 in its entirety. To earn credit, this course must be completed with a grade of “C” or better. (Advanced standing for Registered Nurses.) Prerequisites: NURS [3314](#), NURS [3315](#), NURS [3665](#). Course fee: \$60.00.

NURS 3526 Child Health Nursing

Five semester hours, two theory, three clinical. (SP)

This course focuses on clinical application of the nursing process in providing culturally specific care to children, adolescents and their family systems. Clinical experiences in acute care and community-based settings provide students with the opportunity to apply primary, secondary and tertiary prevention within child health care and family-client systems. Critical thinking, health promotion, family-centered care and cultural diversity are stressed. Contents will be covered over a 16 week period with appropriate unit and final examination and clinical rotations. In order for a student to pass the NURS 3526 course, the student will have to demonstrate mastery with a test average of 75 and passing clinical experience. Students who cannot achieve these objectives will be required to repeat NURS 3526 in its entirety. To earn credit, this course must be completed with a grade of "C" or better. (Advanced standing for Registered Nurses.) Prerequisites: NURS [3314](#), NURS [3315](#), NURS [3665](#). Course fee: \$100.

NURS 3558 Psychosocial Nursing.

Five semester hours, three theory, two clinical (2 hours equals six contact hours). (SS)

This clinical course focuses on culturally competent nursing care for persons experiencing alterations in mental health status, applying the nursing process with individuals, families and groups adapting to those alterations. Particular attention is given to cultural influences and caring psychosocial interventions in a variety of residential and community-based settings. Student competence in therapeutic communication, group process and the counselor role will be further developed. To earn credit, this course must be completed with a grade of "C" or better. (Advanced standing for Registered Nurse students.) Prerequisites: NURS [3314](#), NURS [3315](#), NURS [3625](#), NURS [3665](#), NURS [4463](#). Co-requisite: NURS [3305](#). Course fee: \$125.00.

NURS 3590 Nurse Role and Practice Transitions (RN/BSN only).

Five semester hours, three theory, two clinical (2 hours equals six contact hours). (SP)

This course provides the student with an organizing framework for defining professional nursing practice as a learned and complex therapeutic process through which the nurse engages individuals, families, or communities for the purpose of meeting health needs. The health needs of individuals, families and communities are examined within relevant theoretical contexts. Nursing philosophies are explored, with special emphasis given to the interpretation of the influence of culture and caring on health. To earn credit, this course must be completed with a grade of "C" or better. Prerequisite: Admission to RN/BSN track, completion of all core requirements. Course fee: \$200.00.

NURS 3665 Introduction to Adult Health Nursing

Six semester hours, three theory, three (3 hours equals nine contact hours) clinical. (FL)

This six credit hour clinical course provides an introduction to culture specific caregiving for adult clients experiencing acute and chronic illnesses. An anatomical systems, adult life span approach will structure the course; critical thinking, research applications and professionalism are to be demonstrated. Diverse practice settings will be used for the 135 required hours of student clinical experience. To earn credit, this course must be completed with a grade of "C" or better. (Advanced standing for Registered Nurses.) Prerequisites: NURS [2312](#), NURS [2413](#) and all core requirements. Co-requisites: NURS [3314](#), NURS [3315](#). Course fee: \$60.00.

NURS 4290 Senior Lab Seminar

Two semester hours, laboratory only (6 contact hours). (SP)

This laboratory course provides in-depth diagnosis of mastery and reinforcement of all curricular content in basic nursing knowledge and skills. Critical thinking is used to apply the nursing process to plan and evaluate culturally based care for individuals, families and groups across the life span experiencing alterations in physical and psychosocial health. Computer assisted instruction and standardized testing are used to evaluate student readiness for professional licensure and practice. Successful completion of course requirements includes satisfactory performance on a nationally recognized standardized readiness evaluation instrument. To earn credit, this course must be completed with a grade of “C” or better. (Advanced standing for Registered Nurses.) Co-requisites: NURS [4340](#), NURS [4470](#). Prerequisite: All other degree requirements. Course fee: \$130.00.

NURS 4340 International Health Nursing

Three semester hours, theory only. (SP)

This synthesis level course examines international problems and challenges within the context of current political-social-cultural-economic international realities. Looking at health and health care as a basic human right students will explore basic health-related concepts and trends within a global context. Immigration, socioeconomic conditions and environmental factors will be analyzed in relationship to border health. Special attention will be paid to the impact NAFTA and various "maquila" phenomena have had on border health, the profession of nursing and the future socioeconomic growth and/or development of the two Laredos. To earn credit, this course must be completed with a grade of “C” or better. Prerequisite: NURS [3305](#), NURS [4665](#) or permission of instructor.

NURS 4363 Leadership, Management and Issues in Nursing

Three semester hours. (SP)

In this theoretical and experiential course, current theories of management and leadership are examined and related to nursing practice and focus is placed on prominent national, state and local issues in nursing and health care. Leadership is examined in both historical and evolving contexts as a process which can be learned, key practice, education, and government issues in nursing are examined. Elements that determine the culture of nursing and health care organizations are considered with regard for inherent issues concerning the development of nursing roles. Student will learn the effective use of power as a positive force in bringing about desired change, learn the rights and duties of providers and recipients of care, explore political and legal foundations of the health care profession, learn who controls health care resources, practice decision-making, and develop critical thinking to establish innovative and creative approaches to nursing practice through clinically related applications. To earn credit, this course must be completed with a grade of “C” or better. Prerequisite: Basic: NURS [3314](#), NURS [3315](#), NURS [3590](#), NURS [3665](#) or NLN Mobility Exam. Co-requisite: NURS [3302](#), NURS [3525](#). (Formerly NURS 4463)

NURS 4570 Comprehensive Emergent Care

Five semester hours, two theory, three clinical. (SP)

This course focuses on the development of advanced nursing knowledge and skills in the acute care of high risk populations. Because students will have contact during the course with individuals and families from diverse cultural groups, health care problems and needs are examined with regard for the unique influences of divergent cultural, economic, and political forces. However, the emphasis of the course is on the mastery of competencies and confidence in the provision of direct nursing care to high risk individuals demanding emergent care. Students will assess, plan, implement, and evaluate comprehensive nursing care with clients at risk during post traumatic events, bioterrorism events, and environmental disasters. To earn credit, this course must be completed with a grade of "C" or better. Prerequisites: NURS [3302](#), NURS [3314](#), NURS [3315](#), and NURS [3590](#), and/or Permission of Instructor. (Formerly NURS 4470) Course fee: \$50.00 for basic nursing student; \$200.00 for RN/BSN student.

NURS 4622 Community Health Nursing

Six semester hours, three theory, three clinical (3 hours equals 9 contact hours). (FL)

Community health nursing emphasizes the development of knowledge and skills integral to working with communities. Epidemiological principles will provide the framework for conducting community assessments. Students will work in mutuality with community groups to assess their health care needs, emphasizing the cultural and environmental contexts of health problems. In partnership with this group, students will examine the entire range of health needs and resources (folk and traditional) available within this community, identify strengths and weaknesses of those resources, and work in partnership with the community to address its felt needs. To earn credit, this course must be completed with a grade of "C" or better. Prerequisites: NURS [3302](#), NURS [3314](#), NURS [3315](#), NURS [3590](#), NURS [3665](#). Pre- or Co-requisite: NURS [3305](#), NURS [4665](#).

NURS 4665 Advanced Adult Health Nursing

Six semester hours, three theory, three clinical (3 hours equals nine contact hours). (FL) This course offers expanded knowledge based on clinical experiences in acute care settings. The focus of the course is providing culturally congruent comprehensive nursing care to adults with multi-system and complex health care needs. Post conferences will coordinate clinical experience with theory-based practice and ethical and legal ramification. During the 135 required hours of clinical practice, students will be introduced to the nurse's professional, provider and coordinator of care roles. (Advanced standing for Registered Nurses.) Prerequisites: NURS 3305, NURS 3314, NURS 3315, NURS 3558, NURS 3665. Co-requisite: NURS 4622. Course fee: \$60.00

NURS 4199-4799 Current Topics

One-seven semester hours, theory or clinical.

An in-depth focus upon current issues impacting the profession of nursing and/or the health of society. May be repeated when topic changes. Open to all students with permission of instructor. To earn credit, this course must be completed with a grade of "C" or better.

Texas A&M International University
 Canseco School of Nursing
 C. Basic Curriculum Bachelor of Science in Nursing
 2009-2010

Pre Nursing Coursework

FALL		SPRING		SUMMER	
FRESHMAN					
English I	3	English II	3	English III	3
Anatomy/Physiol. I	4	Anatomy/Physiol. II	4	Math II - Statistics	3
Math I - College Algebra	3	Fine arts	3	Gov't. I	3
Psychology	3	NURS 1302 Cultural Determinants	3	History I	3
Total	13	Total	13	Total	12
SOPHOMORE					
Gov't. II Sep. 1-application	3	<u>Start Clinical Nursing Coursework FOR Students admitted Spring 2007</u>			
Chemistry 2.5 GPA- 2.5 Science	4	Microbiology	4		
NURS 2310 Nutrition	3	Speech	3		
History II	3	NURS 2312 Foundations of Professional Nsg	3		
HESI		NURS 2413 Basic Skills Lab	4		
Total	13	Total	14		
Entrance Exam October					
JUNIOR					
NURS 3314 Pathophysiology	3	NURS 3525 Childbearing Nsg	5	NURS 3558 Psychosocial Mental Health	5
NURS 3315 Health Assessment	3	NURS 3526 Child Health Nsg	5	NURS 3305 Research	3
NURS 3665 Adult Health I	6	NURS 4363 Leadership, Mgmt & Issues in Nsg	3	Total	8
Total	12	Total	13		
SENIOR					
NURS 4665 Adv. Adult Health	6	NURS 4340 International Health	3	TOTAL CREDITHOURS 120	
NURS 4662 Community Health	6	NURS 4570 Emergent Care	5		
Total	12	NURS 4290 Senior Lab Seminar	2		
		Total	10		

Texas A&M International University
 Canseco School of Nursing
 D. RN/BSN Curriculum Bachelor of Science in Nursing
 2009-2010

Pre Nursing Coursework		FALL		SPRING		SUMMER	
				NURS 3590 Nurse Role Practice Transition	5		
				NURS 3302 Cultural Determinants	3		
				Total	8		
JUNIOR							
		NURS 3314 Pathophysiology	3	NURS 4363 Leadership, Mgmt & Issues in Nsg	3		
		NURS 3315 Health Assessment	3				
		Total	12	Total	3		
SENIOR							
		NURS 3305 Research	3	NURS 4340 International Health	3	TOTAL CREDIT HOURS	120
		NURS 4662 Community Health	6	NURS 4570 Emergent Care	5		
		Total	9	Total	8		

E. SEQUENCE OF COURSES

1. BACHELOR OF SCIENCE IN NURSING

Following is one suggested four-year degree plan. Students are encouraged to see their advisor each semester for help with program decisions and enrollment. Students are responsible for reviewing the [Program of Study Requirements](#) and the requirements of the Dr. F. M. Canseco School of Nursing.

FALL	HOURS	SPRING	HOURS
FRESHMAN YEAR		FRESHMAN YEAR	
BIOL 2401	4	BIOL 2402	4
			Anatomy & Physiology I
			Anatomy & Physiology II
ENGL 1301	3	ENGL 1302	3
			English Composition I
			English Composition II
MATH 1314	3		Visual/Performing Arts
			3
PSYC 2301	3	NURS 1302	3
			Cultural Determinants ¹
Total	13		13
		SUMMER	
		ENGL	3
			Survey of Literature *
		HIST 1301	3
			The U.S. to 1877
		MATH 1342	3
			Introductory Statistics
		PSCI 2305	3
			American National Govt
Total			12
SOPHOMORE YEAR		SOPHOMORE YEAR	
CHEM	4	BIOL 2415	4
			Chemistry ²
PSCI 2306	3	NURS 2413	4
			Basic Nursing Skills
NURS 2310	3	NURS 2312	3
			Found of Professional Nurs ¹
HIST 1302	3	SPCH 1311	3
			Fundamentals of Speech
Total	13		14

JUNIOR YEAR

NURS 3314 Pathophysiology ¹	3
NURS 3315 Health Assessment ¹	3
NURS 3665 Intro Adult Health Nurs ¹	6
Total	12

JUNIOR YEAR

NURS 3525 Childbearing Nursing ¹	5
NURS 3526 Child Health Nursing ¹	5
NURS 4363 Leadership, Management and Issues in Nursing ¹	3
Total	13

SUMMER

NURS 3558 Psychosocial Nursing ¹	5
NURS 3305 Nursing Research ¹	3
Total	8

SENIOR YEAR

NURS 4665 Adv Adult Health Nurs ¹	6
NURS 4622 Community Health Nurs ¹	6
Total	12

SENIOR YEAR

NURS 4340 International Health Nurs ¹	3
NURS 4570 Comp Emergent Care ¹	5
NURS 4290 Senior Lab Seminar ¹	2
Total	10

TOTAL SEMESTER CREDIT HOURS: 120

¹All courses required for completion of the basic Bachelor of Science in Nursing degree can be completed in four calendar years of full time study, including eight long semesters and two summers. The nine nursing courses required for completion of the degree Bachelor of Science in Nursing for Registered Nurses can be completed in five long semesters of full time study. Information on tuition, fees, and length of program for accredited U.S. Nursing Programs is available from the National League for Nursing Accrediting Commission, 3343 Peachtree Road NE, Suite 500, Atlanta GA, 30326, P: (404) 975-5000, F: (404) 975-5020, <http://www.nlnac.org>.

²Chemistry, select any 4 SCH chemistry with lab.

Actual degree plans may vary depending on availability of courses in a given semester. Some courses may require prerequisites not listed.

2. BACHELOR OF SCIENCE IN NURSING (RN/BSN)

Registered Nurse students are admitted in the Spring semester on a space available basis and upon completion of all core coursework. Students are responsible for reviewing the Program of Study Requirements and the requirements of the Dr. F.M. Canseco School of Nursing.

**See the University Core Curriculum Requirements in Appendix A for approved list of course options.*

		SPRING	
		SOPHOMORE YEAR	HOURS
		NURS 3590 Nurse Role & Prac	5
		Trans **	
		NURS 3302 Cultural Determinants	5
Total			8
FALL		SPRING	
JUNIOR YEAR		JUNIOR YEAR	
	HOURS	NURS 4363	HOURS
NURS 3314 Pathophysiology	3	Leadership & Mgmt in Nursing	3
NURS 3315 Health Assessment	3		
Total	6		3
SENIOR YEAR		SENIOR YEAR	
		NURS 4340 Int'l Health Nursing	4
NURS 3305 Nursing Research	3	NURS 4570 Comprehensive	
NURS 462 Community Health Nsg	6	Emergent Care	4
Total	9		8

**Upon successful completion of the National League for Nursing Mobility Exams, 22 credits (11 upper division and 11 lower division) will be transferred in for previous nursing coursework in addition to NURS 2311, 2312, and 2313.

All courses required for completion of the basic Bachelor of Science in Nursing degree can be completed in four calendar years of full time study, including eight long semesters and two summers. The nine nursing courses required for completion of the degree Bachelor of Science in Nursing for Registered Nurses can be completed in five long semesters of full time study. Information on tuition, fees, and length of program for accredited U.S. Nursing Programs is available from the National League for Nursing Accrediting Commission, 3343 Peachtree Road NE, Suite 500, Atlanta, GA, 30326, P: (404) 975-5000, F: (404) 975-5020, <http://www.nlnac.org>.

F. CREDIT FOR PRIOR LEARNING

TRANSFER APPLICANTS

Transfer applicants must meet the same academic criteria for admission to Clinical Studies as stipulated above for pre-clinical students. Admission is competitive and contingent on available space. Applicants must meet all admission requirements of the University, and in addition, must meet the following criteria:

1. Accepted into the school of nursing on space available basis only.
2. Have a GPA of 2.5 overall on all previous required nursing course work.
3. Have four hours required science courses within the last 5 years with a GPA of 2.5.
4. Pass the HESI entrance exam with a predictive score of 75% or greater on each of the required areas.
5. Have completed all previous nursing course work within the previous 3 years.
6. Meet all other university requirements for transfer and be eligible for a degree from TAMIU.
7. Verification of drug and criminal background screening by a designated company or agency at student expense.

Criteria for acceptance of transfer work is as follows:

1. Courses taken in pharmacology and nutrition will be evaluated for course transferability.
2. Courses in foundations and skills will be evaluated for course compatibility with the SON, credit may be given for foundations and skills if grade is C or better.
3. Introductory medical surgical/adult health nursing, pediatric nursing, mental health nursing, and maternity nursing (if previously taken) must be validated by an exit exam required by the SON for all nursing students. A predictive score of 75% or better is considered passing.

Registered Nurse Students

All RN/BSN students are transfer students. They need 60 semester credit hours to be admitted junior status at TAMIU. Negotiated articulation plans with neighboring community college A.D.N. programs and challenge exams such as NLN Mobility Profile II are used to grant college credit. Because of its international character, TAMIU also attracts foreign nurses who wish to pursue a baccalaureate degree. TAMIU already has extensive experience with foreign students and has policies for them, as described in the TAMIU catalog.

G. THEORY AND CLINIC LABORATORY HOURS

Credit hour allocation follows the standard university ratio of one semester credit hour for one clock hour of class time and one semester credit hour for every three clock hours of clinical experience. One course, NURS 3315 Health Assessment has a ratio of two clock hours of intensive laboratory experience to one course credit. The reason for a different ratio for this health assessment laboratory is the intensity of the clinical laboratory experience in contrast to a field clinical experience.

Nursing is a practice discipline, requiring substantial hands-on clinical experience in support of classroom learning. Beginning students require more background classroom learning and supportive laboratory instruction, whereas advanced students require increased hours of clinical field experience in preparation for transition to the nursing workplace.

VII. BSN POLICIES AND PROCEDURES

- A. ADMISSION REQUIREMENTS TO BASIC NURSING PROGRAM
- B. ADMISSION TO RN/BSN PROGRAM
- C. CRIMINAL BACKGROUND AND SUBSTANCE ABUSE
- D. UNDERGRADUATE TRANSFER APPLICANTS
- E. LICENSURE AS A REGISTERED NURSE
- F. DECLARATORY ORDER REQUIREMENTS OF TEXAS BOARD OF NURSE EXAMINERS
- G. ADMISSION DELAY POLICY
- H. CORE PERFORMANCE STANDARDS
- I. STUDENT SELECTION
- J. PROGRESSION
 - 1. Student Health General Requirements for Clinical Nursing Courses
 - 2. Grading Policies
 - 3. Attendance Policy
 - 4. Course Policies
 - 5. Examination Policy and Guidelines
 - 6. Grievance
 - 7. BSN Program Add, Drop, Withdraw and Incomplete
 - 8. Academic Probation
 - 9. Re-admission to the School of Nursing
 - 10. Student Professional Dress and Appearance Policy
- K. GRADUATION REQUIREMENTS

A. ADMISSION REQUIREMENTS TO BASIC NURSING PROGRAM

Nursing students pursue professional courses based on knowledge of physical, biological and social sciences, the humanities, and communication skills. Upon successful completion of requisite courses in these disciplines, students are eligible for admission to the upper-division clinical studies unit of the School of Nursing. All prospective nursing students should seek advisement from faculty of the School of Nursing, in order to plan a program of study that meets the needs of the student as well as the requirements of the degree plan.

Students are accepted into clinical studies in the spring of each year. Transfer students will be accepted into clinical studies in the spring and fall of each year. Admission to clinical studies is competitive and on a space available basis. See "Admission to Clinical Nursing Courses."

1. APPLICATION PROCESS

Upon completion of prescribed freshman year course work (35 SCH), including prerequisite science courses, students should submit a record of their grades in freshman year courses, two letters of reference, the signed "acknowledgement of license eligibility requirements" form and the School of Nursing Application form. Students meeting all admission requirements will be selected for admission on the basis of scores on a standardized nursing school admission test that evaluates competence in math, reading and critical thinking.

2. ADMISSION TO CLINICAL COURSES

Students are eligible for admission to clinical nursing courses when the following requirements have been met:

- a. Acceptance by Texas A&M International University.
- b. Complete application and supporting documentation received by the School of Nursing by September 1.
- c. Completion of pre-nursing courses in the Canseco School of Nursing: NURS 1302 Cultural Determinants of Health and NURS 2310 Nutrition. If nutrition is taken at another college/university it will be evaluated for course transferability.
- d. Completion of at least 35 semester credit hours of core curriculum and support area courses with a minimum cumulative grade point average of 2.5 (on a 4.0 scale) for spring entry.
- e. In the event of summer entry, completion of at least 47 semester credit hours of core curriculum and support area courses with a minimum cumulative grade point average of 2.5 (on a 4.0 scale).
- f. Completion of three of the four required science courses, with a minimum grade of "C" and a grade point average of 2.5 (on a 4.0 scale), for spring entry.
- g. In the event of summer entry, all four required science courses, with a minimum grade of "C" and a grade point average of 2.5 (on a 4.0 scale), must be completed.
- h. Prerequisite coursework in the sciences must have been completed within five years of the date of admission to the major. The assessment of dated credits and courses requiring updating will be made by the Admission and Progression Committee of the Canseco School of Nursing.
- i. Score baseline proficiency on the Nurse Entrance Exam: Math 75%, Reading 75% Grammar 75%. The test is administered by the School of Nursing in late September to students meeting criteria a - h above. If unsuccessful on the first attempt, a second opportunity to demonstrate proficiency on the exam will be provided in October to

students who have completed 20 clock hours of Plato remediation in each category (Math, Reading, or Grammar) in which they were unsuccessful. A third and final opportunity to demonstrate proficiency on the exam will be provided the following September.

- j. At student expense, verification of drug and criminal background screening by a company or agency designated by the School of Nursing.
- k. Student must have documentation of a current physical examination with no restriction (less than 1 year old), American Heart Association Health Care Provider CPR certification, and the following immunization: DTAP, Varicella or titer, MMR, TB skin test or chest x-ray (less than three years old), Hepatitis B vaccine or informed refusal.

3. Field of Study Curriculum for Nursing
[Texas Higher Education Coordinating Board 2002](#)

The following annotated set of courses, totaling 28 semester credit hours (SCH) of fully transferable and applicable lower-division academic courses, and an additional set of Workforce Education (WECM) nursing courses, make up the Field of Study Curriculum for Nursing:

Academic Courses

Content Area	Number and type of courses	Texas Common Course Numbering System Equivalents
Anatomy & Physiology	2 courses: A&P I with lab and A&P II with lab	BIOL 2401 and BIOL 2402 only*
Microbiology	1 course: Microbiology with lab	BIOL 2420 OR BIOL 2421
Chemistry	1 course: chemistry with lab	Any 4 SCH ACGM course including lab
Nutrition	1 course: Nutrition & Diet Therapy I	HECO 1322 OR BIOL 1322
Psychology	2 courses: General Psychology and Lifespan Growth & Development	PSYC 2301 AND PSYC 2314
Mathematics	1 course: Elementary Statistical Methods	MATH 1342

*Prerequisite courses to BIOL 2401/2402 or the equivalent are not required for the Field of Study Curriculum for Nursing

Nursing Content Courses

NOTE: Lower-division nursing content is offered at community colleges through one of two general types of programs: Blocked or Integrated. Because of the distribution of content, it is extremely difficult to align curricula from one type of program to another. Students who desire to transfer from a program utilizing one type of program into the other type of program should be prepared to make up some content through a “bridge” course or through the repetition of some content within courses. It is recommended that a student make every effort to avoid transferring from one type of program to the other before completing the associate degree in nursing in order not to lose credit.

Lower-division nursing content courses being transferred from a blocked-curriculum program to another blocked-curriculum program should be applied to the degree on a course-for-course substitution basis, in which the course transferred is applied IN LIEU OF the course at the receiving institution, even if the number of semester credit hours awarded upon the completion of the course varies between the sending and receiving institutions. The same procedure should be used when a student transfers from an integrated-curriculum program into another integrated-curriculum program.

Transfer of courses from either type of program will result in a deficit of upper division course hours and may require additional courses at TAMIU to meet TAMIU graduation requirements.

For Nursing Content Courses, CHOOSE EITHER Blocked Curriculum OR Integrated Curriculum BUT NOT BOTH:

BLOCKED CURRICULUM

Content Area	WECM Course Rubric & Number	SCH Range (Required Clinical Co-requisite)
Fundamentals (including Basic Skills)	RNSG 1413/RNSG 1513 (basic skills incorporated) OR RNSG 1413/1513 PLUS RNSG 1105/1205 OR RNSG 1209/1309 PLUS RNSG 1105/1205 OR Any equivalent theory/lab combination	2 to 6 SCH
Mental Health	RNSG 2113/2213	1 OR 2 SCH
Obstetrics/Pediatrics	RNSG 1412/1512 OR RNSG 1251 PLUS RNSG 2201 OR RNSG 2208/2308 PLUS RNSG 2201	4 OR 5 SCH
Medical/Surgical Nursing	RNSG 1331/1431 or 1231 PLUS 1232 A. PLUS RNSG 1347/1447 or 1247 PLUS 1248 OR RNSG 1341/1441 PLUS RNSG 1343/1443 OR EQUIVALENT with OR without RNSG 1144/ RNSG 1244	2 to 6 SCH

OR
INTEGRATED CURRICULUM

Content Area	WECM Course Rubric & Number	SCH Range (Required Clinical Co-requisite)
Introduction to Professional Nursing for Integrated Programs	RNSG 1423/RNSG 1523 (basic skills incorporated) OR RNSG 1423/1523 PLUS RNSG 1119/1219 OR RNSG 1222 PLUS RNSG 1223 PLUS RNSG 1119/1219	2 to 6 SCH
Integrated Care of the Client with Common Health Care Needs	RNSG 2404/2504 (basic skills incorporated) OR RNSG 2404/2504 PLUS RNSG 11XX/12XX A. <u>OR</u> RNSG 2203 PLUS RNSG 2204 PLUS RNSG 11XX/12XX	2 to 6 SCH

The following notes address special circumstances and are also part of the field of study curriculum:

- (1) Wherever possible, courses applied to fulfill field of study curriculum requirements should also be used to satisfy requirements in the general academic core curriculum. Generally, the math course, the biology or chemistry course(s), and one psychology course should be able to fulfill requirements in both curricula.
- (2) Courses selected for inclusion in the field of study curriculum are those that are common to most baccalaureate nursing programs.
- (3) Completion of the field of study curriculum shall not prevent a receiving institution from requiring additional courses/content for specific degree programs.
- (4) Students should not be required to repeat courses that they have completed successfully.
- (5) The academic courses and the unmodified WECM courses that are included in the Field of Study Curriculum for Nursing should transfer immediately upon approval of the field of study curriculum by the Coordinating Board. New WECM courses and courses that need modification should be accepted in transfer as soon as those modifications have been approved by the WECM Maintenance committee and added to the WECM inventory. Implementation of the complete field of study curriculum should not take more than one calendar year following addition of the new and modified courses to the WECM inventory. New or modified WECM courses will be initiated with entering students. Programs may allow sophomore students to continue with the previous curricula to prevent changing courses in the middle of their programs. Full implementation of new and modified WECM courses must be complete within two years after their addition to the WECM inventory.

B. ADMISSION TO THE RN/BSN PROGRAM

1. APPLICATION PROCESS

Students should submit Texas A&M International University's Undergraduate Application form, two letters of reference, the physical examination form and the School of Nursing Application form.

2. ADMISSION REQUIREMENTS-RN/BSN STUDENTS

Registered Nurses seeking admission to the RN/BSN program apply directly to the School of Nursing. Admission to the University does not automatically guarantee admission to the School of Nursing. All students entering the RN/BSN track are considered transfer students and accepted into the BSN program on a space available basis. In addition to completing all requirements for general admission to the University, the student must meet the following criteria:

1. Completion of a School of Nursing Application (in addition to the University application form).
2. Evidence of current licensure without restrictions as a Registered Nurse in Texas.
3. A 2.5 (on a 4.0 scale) or better cumulative grade point average (GPA) in all previous subjects taken.
4. A 2.5 (on a 4.0 scale) or better cumulative grade point average (GPA) in all previous nursing coursework.
5. A personal interview with the Nursing Admissions and Progression Committee may be required.
6. All University core coursework complete.
7. Verification of drug and criminal background screening by a designated company or agency at student expense.
8. RN/BSN students will enter in the spring semester with the initial course(s) being NURS [3590](#) (Bridge) and NURS 3302 (Cultural Determinants). No other nursing coursework may be taken until NURS [3590](#) is successfully completed.
9. Requests for exceptions from GPA or other admission requirements, supported by evidence of extenuating circumstances, will be considered by the School of Nursing Admissions and Progression Committee only after an official School of Nursing Application has been filed. Such consideration for exceptions will be based on the individual student's work performance, academic record, and motivation to continue professional advancement.
10. At the time of entry, the student will be assigned a faculty advisor and be given a degree plan for completion of courses. Any change in degree plan must be made in writing and approved by the appointed advisor. All changes are subject to space availability

3. STUDENT HEALTH REQUIREMENTS FOR CLINICAL NURSING COURSES

In order to be eligible for coursework involving direct patient care experiences all students must provide evidence of current Rubella, Varicella, and DT immunization, PPD or chest X-ray, Hepatitis B vaccines or signed informed refusal, and current physical examination certifying good health/no restrictions.

C. CRIMINAL BACKGROUND AND SUBSTANCE ABUSE POLICY AND PROCEDURE

Policy:

Texas A&M International University (TAMIU), College of Nursing and Health Sciences (CNHS) and Canseco School of Nursing (SON) adheres to the policies of all clinical facilities with which the SON is affiliated for student clinical learning experiences. Many clinical facilities and school districts require criminal background and drug screening. RN/BSN nursing students will adhere to the Licensed Registered Nurse (MSN) Criminal Background and Substance Abuse policy and procedure.

Purpose:

1. Clinical agencies used by the CNHS and SON stipulate in clinical affiliation agreements that criminal background and drug screening be performed before students are permitted into the clinical facilities. This screening requirement is the same as that required of employees of public and private clinical agencies. This policy governs the drug and criminal background screening for nursing students.
2. The rationale for this requirement for clinical students is based on the concept of due diligence and competency assessment of all individuals whose assignments bring them in contact with patients and employees.
3. This approach ensures uniform compliance with Joint Commission standards pertaining to human resource management.
4. Successful completion of criminal background and drug screening does not guarantee licensure or employment after graduation. Full acceptance into the nursing program is contingent upon satisfactory results. Students will be notified by letter of the procedure to follow for the screenings.
5. Admission acceptance and continued enrollment in the school of nursing will be withdrawn for any student with a positive drug (refers only to drugs that do not address a documented health related purpose) or criminal background screening and for those refusing to have screening done.

Timing:

1. All drug and criminal background screening will be conducted as a condition consideration for and full acceptance into the SON. Verification must be received from the designated company (ies) and/or agency (ies) prior to being fully admitted into the nursing program.
2. The results will be accepted for the duration of the student's enrollment in the nursing program if the student has had no change in background status while enrolled unless there is a change in the clinical facility requirements or if the participating student has had a break in the nursing program.
3. A break in enrollment is defined as nonattendance of one full semester or more. Attendance must be verifiable through the university. The CNHS/SON does reserve the right to request random drug or background screenings at any time with the student responsible for all costs.
4. The CNHS and SON will designate the company (ies) and/or agency (ies) selected to do the drug and criminal background screening and will not accept results from any other company or agency. The student is responsible for the cost of the criminal and drug screening at the time of screening. The cost is non-refundable.

Procedure for Criminal Background Screening:

Upon completion of the HESI entrance exam, nursing applicants must undergo a background check through the Texas Board of Nursing (TBON). Refusal of background check will result in the student not being considered for entry into the SON.

1. Students must pick up a FAST PASS from the school of nursing and make an appointment with L1 Identity Solutions using the originator number (ORI) TX923490Z.
2. The student will pay L1 for both fingerprint scanning services and the cost of the DPS/FBI background check. At this time, we understand the cost to be \$34.25 for the DPS/FBI check and \$9.95 for L1 services. This process must be done by fingerprint scanning. The TBON will not be accepting fingerprint cards.
3. L1 Identity Solutions will electronically submit the fingscan to the Texas Department of Public Safety to initiate the background check and transmit the results to the TBON. Once the TBON receives the DPS/FBI criminal background check, the BON will do the following:
 - a. Mail a postcard directly to those students who have a clear background check or,
 - b. Correspond with those who have a positive background check and request a petition for a declaratory order; or,
 - c. Correspond with the students who have a rejected fingerprint scan and request another fingerprint scan.
4. Upon receipt of the postcard notification of a clear background check students must bring this postcard in to the school of nursing so a copy can be made. Only those students who bring in the postcard as evidence of a clear background check will be considered for admission.
5. If the CNHS/SON is notified of a change in the student's background status that would result in the student's inability to meet any of the clinical site's background clearance requirements or eligibility to take NCLEX the student must withdraw from the nursing program until the matter is satisfactorily resolved.

Procedure for Drug Screening:

Upon passing the HESI exam and meeting all other requirements for consideration for admission to the school of nursing, applicants must undergo a drug screen from a designated agency.

1. If the student has a positive drug screen for drugs (refers only to drugs that do not address a documented health related purpose) or refuses to have a drug screen he/she will not be eligible to enroll in the nursing program.
2. While enrolled if there is a positive drug screen or the student refuses to have a drug screen the student will be required to immediately withdraw from the SON.
3. A positive drug screen (refers only to drugs that do not address a documented health related purpose) will result in permanent dismissal and ineligibility for readmission into the SON.

School of Nursing and Clinical Agency Duty to Report to the Board of Nurse Examiners

The following excerpts are from The [State of Texas Nursing Practice Act](#), [Nursing Peer Review](#) and [Nurse Licensure Compact](#) (effective September, 2007). For entire document and/or section requirements please see: <http://www.bon.state.tx.us/nursinglaw/npacontents.html>.

Except as provided by Subsection (b) the following are grounds for reporting a nurse under Section [301.402](#), [301.403](#), [301.405](#), or [301.407](#).

Sec. 301.401 Definitions

In this subchapter:

- (1) “Conduct subject to reporting” means conduct by a nurse that:
 - (A) violates this chapter or a board rule and contributed to the death or serious injury of a patient;
 - (B) causes a person to suspect that the nurse’s practice is impaired by chemical dependency or drug or alcohol abuse;
 - (C) constitutes abuse, exploitation, fraud, or a violation of professional boundaries; or
 - (D) indicates that the nurse lacks knowledge, skill, judgment, or conscientiousness to such an extent that the nurse’s continued practice of nursing could reasonably be expected to pose a risk of harm to a patient or another person, regardless of whether the conduct consists of a single incident or a pattern of behavior.
- (2) “Minor incident” means conduct by a nurse that does not indicate that the nurse’s continued practice poses a risk of harm to a patient or another person.

Section 301.402 Mandatory Report by Nurse (see actual section for entire reporting requirements)

- (a) In this section:
 - (1) “Nursing educational program” means a board approved educational program leading to initial licensure as a registered nurse or vocational nurse
 - (2) “Nursing student” means an individual who is enrolled in a professional nursing or vocational nursing education program.
- (b) A nurse shall report to the board in the manner prescribed under Subsection (d) if the nurse has reasonable cause to suspect that:
 - (1) another nurse is subject to a ground for reporting under Section 301.401; or
 - (2) the ability of a nursing student to perform the services of the nursing profession would be, or would reasonable be expected to be, impaired by chemical dependency

Sec. 301.403. Duty of Peer Review Committee to Report

A nursing peer review committee operating under Chapter 303 that determines that a nurse has engaged in conduct subject to reporting shall file with the Board a written, signed report. (See actual section for full reporting requirements)

Sec. 301.404 Duty of Nursing Educational Program to Report

- (a) In this section, “nursing educational program” and “nursing student” have the meanings assigned by Section 301.402(a)
- (b) A nursing educational program that has reasonable cause to suspect that the ability of a

nursing student to perform the services of the nursing profession would be, or would reasonably be expected to be, impaired by chemical dependency shall file with the Board a written, signed report that includes the identity of the student and any additional information the Board requires.

Compliance and Record Keeping:

The designated agency/company will notify the TAMU Dean of CNHS of any individual who fails drug screening. All records will be kept separate and confidential.

The SON will send verification on adherence to the policy to the clinical affiliate prior to the clinical rotation start date. Verification is accomplished by sending a letter from the SON on letterhead stating that these standards have been met by the student, listing the student's full name and clinical rotation start date. If more than one student is attending a clinical rotation, a comprehensive list with all of the student's names may be submitted.

Texas A&M International University
College of Nursing and Health Sciences
Canseco School of Nursing

Drug Screening Waiver Agreement

I understand that as a requirement for admission to Texas A&M International University, College of Nursing and Health Science (CNHS) and the Canseco School of Nursing (SON), I must submit to criminal background and drug screening from a designated company (ies) and/or agency (ies). These companies and/or agencies will provide the results of the drug screen to the Dean of the CNHS. Proof of criminal background clearance will be in the form of a postcard from the Texas Board of Nursing that indicates a clear background check.

I understand that either refusal to submit to background or drug screenings or positive results will result in denial of admission to the CNHS/SON.

I further understand that I may be subject to repeated drug and background screenings while enrolled in the CNHS/SON. A positive drug result (to drugs that do not address a documented health related purpose) or refusal to submit to screenings will result in immediate dismissal from the CNHS/SON. If the CNHS/SON is notified of change in background clearance status that would result in the student's inability to meet any of the clinical site's background clearance requirements or eligibility to take NCLEX the student must withdraw from the nursing program until the matter is satisfactorily resolved.

By signing this document, I indicate that I have read, I understand, and I agree to the College of Nursing and Health Sciences, Canseco School of Nursing Drug and Criminal Background Screening Policy. I understand that a negative drug and criminal background screen is required for admission and for progression in the school of nursing. I also understand that all costs associated with the screening process are the responsibility of the student.

This signed document constitutes my consent for drug screening by a school of nursing designated company and/or agency. It also constitutes consent for results of my laboratory drug screen to be released to Dean of the CNHS.

Student (Printed Name)

Student Signature

Date

D. UNDERGRADUATE TRANSFER APPLICANTS POLICY AND PROCEDURE

Policy: The Canseco School of Nursing (SON) in accordance with the field of study for nursing outlined by the Texas Higher Education Coordinating Board has outlined the following procedures for accepting transfer coursework taken from other accredited Texas schools of nursing.

Procedure:

1. Transfer applicants must meet all the university and school of nursing admission requirements (including the entrance exam). Admission is competitive and contingent on available space.
2. All courses may not be more than 36 months old from the date awarded credit and evaluated for equivalency by the transfer coordinator or the Dean of the College of Nursing and Health Sciences.
3. NURS 2310 Nutrition, NURS 2413 Nursing Skills and NURS 2312 Foundations of Nursing can be accepted provided:
 - a. The courses taken at another college/university must be deemed compatible with those offered at the SON, and
 - b. The applicant/student made a C or better in the course.
 - c. Following determination that the course will be accepted for transfer credit a course substitution form must be completed and submitted to the Registrar's office.
4. NURS 3314 Pathophysiology and NURS 3315 Health Assessment can be accepted provided:
 - a. The courses taken at another college/university are deemed equivalent after review of course content and hours, and
 - b. The applicant/student made a C or better in the course.
 - c. If the transfer coordinator or faculty teaching the courses have any questions regarding course compatibility the student must make a score of 75% or better on a predictive exit exam (usually but not limited to the final exam used in the course).
 - d. Following determination that the course will be accepted for transfer credit a course substitution form must be completed and submitted to the registrar's office.
 - e. If credit is given based on testing a letter on SON letterhead explaining the SON exam that was administered must be routed through the Testing Center and then sent to the Registrar's office.
5. NURS 3665 Adult Health Nursing, NURS 3525 Childbearing Nursing, NURS 3526 Child Health Nursing, and NURS 3558 Mental Health Nursing can be accepted provided:
 - a. The courses taken at another college/university are deemed equivalent after review of course content and hours.
 - b. The applicant/student made a C or better in the course, and
 - c. The student makes a score of 75% or better on a predictive exit exam (usually but not limited to the final exam used in the course).

- d. Following determination that the course will be accepted for transfer credit based on testing a letter on SON letterhead explaining the SON exam that was administered must be routed through the Testing Center and then sent to the Registrar's office.

E. LICENSURE AS A REGISTERED NURSE

TEXAS BOARD OF NURSING
CHAPTER 213 PRACTICE AND PROCEDURE
[RULE §213.30 Declaratory Order of Eligibility for Licensure](#)

- (a) A person enrolled or planning to enroll in an educational nursing program that prepares a person for an initial license as a registered or vocational nurse or an applicant who seeks licensure by endorsement pursuant to §217.5 of this title (relating to Temporary License and Endorsement) who has reason to believe that he or she may be ineligible for licensure, may petition the Board for a declaratory order or apply for a license by endorsement as to his or her eligibility.
- (b) The person must submit a petition or application on forms provided by the Board which includes:
- (1) a statement by the petitioner or applicant indicating the reason(s) and basis of potential ineligibility;
 - (2) if the potential ineligibility is due to criminal conduct and/or conviction, any court documents including, but not limited to, indictments, orders of deferred adjudication, judgments, probation records and evidence of completion of probation, if applicable;
 - (3) if the potential ineligibility is due to mental illness, evidence of evaluation, including a prognosis, by a psychologist or psychiatrist, evidence of treatment, including any medication;
 - (4) if the potential ineligibility is due to chemical dependency including alcohol, evidence of evaluation and treatment, after care and support group attendance; and
 - (5) the required fee which is not refundable.
- (c) An investigation of the petition/application and the petitioner's/applicant's eligibility shall be conducted.
- (d) The petitioner/applicant or the Board may amend the petition/application to include additional grounds for potential ineligibility at any time before a final determination is made.
- (e) If an applicant under §217.5 of this title has been licensed to practice professional or vocational nursing in any jurisdiction and has been disciplined, or allowed to surrender in lieu of discipline, in that jurisdiction, the following provisions shall govern the eligibility of the applicant under §213.27 of this title (relating to Good Professional Character).
- (1) A certified copy of the order or judgment of discipline from the jurisdiction is prima facie evidence of the matters contained in such order or judgment, and a final adjudication in the other jurisdiction that the applicant has committed professional misconduct is conclusive of the professional misconduct alleged in such order or judgment.
 - (2) An applicant disciplined for professional misconduct in the course of nursing in any jurisdiction or an applicant who resigned in lieu of disciplinary action is deemed to not have present good professional character under §213.27 of this title and is therefore ineligible to file an application under §217.5 of this title during the period of such discipline imposed by such jurisdiction, and in the case of revocation or surrender in lieu of disciplinary action, until the applicant has filed an application for reinstatement in the disciplining jurisdiction and obtained a final determination on that application.

- (f) If a petitioner's/applicant's potential ineligibility is due to criminal conduct and/or conviction, the following provisions shall govern the eligibility of the applicant under §213.28 of this title (relating to Licensure of Persons with Criminal Convictions):
 - (1) The record of conviction or order of deferred adjudication is conclusive evidence of guilt.
 - (2) Upon proof that a felony conviction or felony order of probation with or without adjudication of guilt has been set aside or reversed, the petitioner or applicant shall be entitled to a new hearing before the Board for the purpose of determining whether, absent the record of conclusive evidence of guilt, the petitioner or applicant possesses present good professional character and fitness.
- (g) If the executive director proposes to find the petitioner or applicant ineligible for licensure, the petitioner or applicant may obtain a hearing before the State Office of Administrative Hearings (SOAH). The Executive Director shall have discretion to set a hearing and give notice of the hearing to the petitioner or applicant. The hearing shall be conducted in accordance with §213.22 of this title (relating to Formal Proceedings) and the rules of SOAH. When in conflict, SOAH's rules of procedure will prevail. The decision of the Board shall be rendered in accordance with §213.23 of this title (relating to Decision of the Board).
- (h) A final Board order is issued after an appeal results in a Proposal for Decision from SOAH. The Board's final order must set out each basis for potential ineligibility and the Board's determination as to eligibility. In the absence of new evidence not disclosed by the petitioner or not reasonably available to the Board at the time the order is issued, the Board's ruling determines the person's eligibility with respect to the grounds for potential ineligibility as set out in the order. An individual whose petition is denied by final order of the Board may not file another petition or application for licensure until after the expiration of three years from the date of the Board's order denying the petition or application for licensure. If the applicant or petitioner does not appeal or request a formal hearing at SOAH after a letter proposal to deny eligibility made by the E&D Committee or the executive director, the applicant or petitioner may re-petition after the expiration of one year from the date of the proposal to deny eligibility, in accordance with this rule and §301.257, Texas Occupations Code.

Source Note: The provisions of this §213.30 adopted to be effective August 15, 2002, 27 TexReg 7107; amended to be effective May 17, 2004, 29 TexReg 4884; amended to be effective February 19, 2006, 31 TexReg 847; amended to be effective October 10, 2007, 32 TexReg 7058; amended to be effective July 2, 2008, 33 TexReg 5007

[SECTION 301.452 GROUNDS FOR DISCIPLINARY ACTION](#)

- (a) In this section, “intemperate use” includes practicing nursing or being on duty or on call while under the influence of alcohol or drugs.
- (b) A person is subject to denial of a license or to disciplinary action under this subchapter for:
 - (1) a violation of this chapter, a rule or regulation not inconsistent with this chapter, or an order issued under this chapter;
 - (2) fraud or deceit in procuring or attempting to procure a license to practice professional nursing or vocational nursing;
 - (3) a conviction for, or placement on deferred adjudication community supervision or deferred disposition for, a felony or for a misdemeanor involving moral turpitude;
 - (4) conduct that results in the revocation of probation imposed because of conviction for a felony or for a misdemeanor involving moral turpitude;
 - (5) use of a nursing license, diploma, or permit, or the transcript of such a document, that has been fraudulently purchased, issued, counterfeited, or materially altered;

- (6) impersonating or acting as a proxy for another person in the licensing examination required under Section 301.253 or 301.255;
 - (7) directly or indirectly aiding or abetting an unlicensed person in connection with the unauthorized practice of nursing;
 - (8) revocation, suspension, or denial of, or any other action relating to, the person's license or privilege to practice nursing in another jurisdiction;
 - (9) intemperate use of alcohol or drugs that the Board determines endangers or could endanger a patient;
 - (10) unprofessional or dishonorable conduct that, in the board's opinion, is likely to deceive, defraud, or injure a patient or the public;
 - (11) adjudication of mental incompetency;
 - (12) lack of fitness to practice because of a mental or physical health condition that could result in injury to a patient or the public; or
 - (13) failure to care adequately for a patient or to conform to the minimum standards of acceptable nursing practice in a manner that, in the Board's opinion, exposes a patient or other person unnecessarily to risk of harm.
- (c) The Board may refuse to admit a person to a licensing examination for a ground described under Subsection (b).
- (d) The board by rule shall establish guidelines to ensure that any arrest information, in particular information on arrests in which criminal action was not proven or charges were not filed or adjudicated, that is received by the board under this section is used consistently, fairly, and only to the extent the underlying conduct relates to the practice of nursing.

[Amended by Acts 2007 (H.B. 2426), 80th Leg., eff. Sept. 1, 2007]

F. DECLARATORY ORDER REQUIREMENTS OF TEXAS BOARD OF NURSE EXAMINERS

A petition for Declaratory Order must be submitted by the nursing candidate/applicant if one of the following criteria apply:

- I. For any criminal offense, including those pending appeal, has the candidate/applicant:
 - A) been convicted of a misdemeanor?
 - B) been convicted of a felony?
 - C) pled *nolo contendere*, no contest, or guilty?
 - D) received deferred adjudication?
 - E) been placed on community supervision or court-ordered probation, whether or not adjudicated guilty?
 - F) been sentenced to serve jail or prison time? court-ordered confinement?
 - G) been granted pre-trial diversion?
 - H) been arrested or have any pending criminal charges?
 - I) been cited or charged with any violation of the law?
 - J) been subject of a court-martial; Article 15 violation; or received any form of military judgment/punishment/action?

(Only exclude Class C misdemeanor traffic violations.)

Note: Expunged and Sealed Offenses: While expunged or sealed offenses, arrests, tickets, or citations need not be disclosed, it is the applicant's responsibility to ensure the offense, arrest, ticket or citation has, in fact, been expunged or sealed. It is recommended that the applicant

submit a copy of the Court Order expunging or sealing the record in question with the application. Failure to reveal an offense, arrest, ticket, or citation that is not in fact expunged or sealed, will at a minimum, subject the license to a disciplinary fine. Non-disclosure of relevant offenses raises questions related to truthfulness and character.

NOTE: Orders of Non-Disclosure: Pursuant to Tex. Gov't Code § 552.142(b), if the applicant has criminal matters that are the subject of an order of non-disclosure the applicant is not required to reveal those criminal matters on this form. However, a criminal matter that is the subject of an order of non-disclosure may become a character and fitness issue. Pursuant to other sections of the Gov't Code, chapter 411, the Texas Nursing Board is entitled to access criminal history record information that is the subject of an order of non-disclosure. If the Board discovers a criminal matter that is the subject of an order of non-disclosure, even if the applicant properly did not reveal that matter, the Board may require that the applicant provide information about any conduct that raises issues of character.

In addition a petition for Declaratory Order must be submitted if the nursing candidate/applicant answers YES to the following questions:

- II. Are you currently the target or subject of a grand jury or governmental agency investigation?
- III. Has any licensing authority refused to issue you a license or ever revoked, annulled, cancelled, accepted surrender of suspended, placed on probation, refused to renew a license, certificate or multi-state privilege held by you now or previously, or ever fines, censured, reprimanded or otherwise disciplined you?
- IV. Within the past five (5) years have you been addicted to and/or treated for the use of alcohol or any other drug?*
- V. Within the past five (5) years have you been diagnosed with, treated, or hospitalized for schizophrenia and/or psychotic disorders, bipolar disorder, paranoid personality disorder, antisocial personality disorder, or borderline personality disorder?*

If "YES" is answered to any question I-V, the applicant must provide a signed and dated letter describing the incidence(s) that is being reported to the Texas Board of Nursing. The applicant may indicate "NO" if he/she has completed and/or is in compliance with Texas Peer Assistance Program for Nurses (TPAPN) for substance abuse or mental illness.

Documentation requirements and forms for Declaratory Order Application may be found at <http://bon.state.tx.us/olv/pdfs/DOapp.pdf>

G. ADMISSION DELAY POLICY

A student may elect to defer admission to clinical nursing coursework for a period of one year only. If the student fails to enroll with 12 months of the original admission date, the offer of admission will be withdrawn and the student must initiate the process again.

H. CORE PERFORMANCE STANDARDS*

The Texas A&M International University Dr. F.M. Canseco School of Nursing has adopted the following Core Performance standards for Admission and Progression in compliance with the 1990 Americans with Disabilities Act (ADA).

Issue	Standard	Some Examples of Necessary Activities (not all inclusive)
Critical Thinking	Critical thinking ability sufficient for clinical judgment	Identify cause-effect relationships in clinical situations, developing nursing care plans.
Interpersonal	Interpersonal abilities sufficient to interact with individuals, families, and groups from a variety of social, emotional, cultural, and intellectual backgrounds.	Establish rapport with patients/clients and colleagues
Communication	Communication abilities sufficient for interaction with others in verbal and written form	Explain treatment procedures, initiate health teaching, document and interpret nursing actions and patient/client responses
Mobility	Physical abilities sufficient to move from room to room and maneuver in small spaces	Move around in patients' rooms, work spaces, and treatment areas; administer cardiopulmonary procedures
Motor Skills	Gross and fine motor abilities sufficient to provide safe and effective nursing care	Calibrate and use equipment; position patients/clients
Hearing	Auditory ability sufficient to monitor and assess health needs.	Hear monitor alarm, emergency signals, auscultatory sounds, cries for help
Visual	Visual ability sufficient for observation and assessment necessary in nursing care	Observe patient/client responses
Tactile	Tactile ability sufficient for physical assessment	Perform palpation, functions of physical examinations and/or those related to therapeutic intervention, e.g., insertion of catheter

*Developed by the Southern Council on Collegiate Education for Nursing (SCCEN), March 1993.

I. STUDENT SELECTION

If at any time the number of qualified applicants should exceed the faculty and facilities available, the Admission and Progression Committee will determine the final selection of students based upon the completion and grade point average on prerequisite core curriculum and support area courses. Any student who meets admission requirements but is unable to enroll in a given year will be given priority for enrollment the following year.

J. PROGRESSION

1. STUDENT HEALTH REQUIREMENTS FOR CLINICAL NURSING COURSES

In order to be eligible for coursework involving direct patient care experiences all students must provide evidence of current Rubella, Varicella, and DT immunization, PPD or chest X-ray, Hepatitis B vaccines or signed informed refusal, and current physical examination certifying good health/no restrictions.

2. GRADING POLICIES

The Canseco School of Nursing has adopted a grading scale in line with other Texas Schools of Nursing, as required by the Board of Examiners:

A- 93-100
B- 84-92
C- 75-83
*D- 70-74

Nursing students must achieve a grade of C or better and pass both clinical and theory components of a course in order to pass that course. (*In some cases, students may receive a non-passing grade of D in pre-nursing courses.)

3. ATTENDANCE POLICY

The Canseco School of Nursing adheres to the Texas A&M International University classroom attendance policy as stated in the current catalog. In addition, each course has specific attendance requirements for both classroom and clinical activities in order to comply with accreditation requirements.

4. COURSE POLICIES

Each course syllabus includes a statement of course policies. These may be more, but not less, stringent than overall school or university policies.

5. EXAMINATION POLICY AND GUIDELINES (Updated January 13, 2006.)

a. Examinations:

Testing format for the course is identified in the nursing course syllabus. To provide students with practice prior to the licensure examination, all nursing examinations use a NCLEX format, which is different from other methods of testing. All test items will assess the student's ability to apply and analyze knowledge learned in the course. Items will ask the student to apply abilities at assess, plan, implement, or evaluate.

b. All examinations will be proctored.

- 1) All materials brought into a test, except for a ParScore sheet, a number 2 pencil with an eraser, black ink pen, and calculator (unless disallowed) must be left in the front of the classroom or area designated by the faculty proctor. Students may wear coats or jackets during the examination period at the discretion of faculty. Faculty will determine what additional aids will be allowed or used during the examination.
 - 2) Students found obtaining information from sources other than what has been allowed by the proctor will be given a **ZERO (0)** in that exam/quiz
 - 3) If the instructor suspects any sharing during an examination, all students involved will receive a **ZERO (0)** on that examination, and will face all consequences of academic dishonesty according to the Canseco School of Nursing Handbook.
 - 4) Student must use approved calculators (computer provides one that does not allow any saving of any materials) for examinations. Students may not borrow calculators from other students during the examination.
- c. Any student who is absent from an examination must notify faculty **prior to the examination**. The weight of the missed test will be added to the student's final examination. The student will be given the opportunity to review the missed test and key with the faculty member during office hours or during review with the class. Review time set by course faculty.
 - d. Only one test can be missed and count toward the final grade. Any other missed examinations will be assigned a grade of **ZERO (0)**.
 - e. Students who need to leave the examination area will be requested to leave all testing materials; questionnaires, ParScore, etc. with the proctor.
 - f. At the conclusion of the examination period, all examination materials will be submitted to the proctor.
 - g. Test tutorials are given at the discretion of the instructor. Test maps will be made available to students prior to examination dates at the discretion of the course instructor.
 - h. Test reviews will be provided after the test at the discretion of the instructor.
 - 1) Examination item answers may be challenged in writing delineating rationale and reference for challenge following the review of the examination.
 - 2) Examination challenges will only be accepted within 2 days of the examination review.
 - 3) Proper credit will be given to the student if and when the rationale and reference for the challenged examination item are determined accurate.
 - i. Examination grades may be posted according to the TAMIU student handbook or course syllabus.
 - j. Course faculty may establish other requirements at their discretion but in no case will these requirements be less stringent.
 - k. No exam grade will be dropped in determining the final grade
 - l. Pop quizzes may be given at the discretion of the course instructor(s).
 - m. A Zero (0) will be awarded to any student who is absent at the time a Quiz is administered.

- n. Standardized Achievement Tests will be administered at various times during the student's enrollment in the Baccalaureate nursing program. The results are used to identify strengths and weaknesses and assist in prescribing the remedial activities. They may also be included in the final course grade.

6. GRIEVANCE

It is expected that faculty and students will fulfill their obligations to the instructional process. If, however, a complaint does arise, the parties should meet in an effort to resolve the matter. Students are encouraged to discuss problems using the following chain of communication for resolution, before resorting to the official appeals process.

- 1) Clinical instructor (where appropriate)
- 2) Course Manager
- 3) Advisor
- 4) Dean of the School of Nursing

If the problem cannot be resolved by this procedure, the Dean should be contacted. If this contact fails to satisfy the complaint, the University's published grievance procedures should be followed. (See also, TAMIU's Student Handbook)

7. BSN PROGRAM ADD, DROP, WITHDRAW, AND INCOMPLETE

The School of Nursing follows the general policies of Texas A&M International University as outlined in the catalog with respect to add, drop, withdrawal and incomplete grades. In addition the following policies apply to Nursing Courses:

- a. The faculty of the School of Nursing supports the idea that the use of an "I" or "W" to hide unsuccessful performance is inappropriate.
- b. After the 10th week or 2/3 of class both the course faculty and the Dean must approve the withdrawal. Adds or drops must be signed by School of Nursing faculty.
- c. All students must maintain a satisfactory (2.00) grade point average:
 - 1) Cumulative (includes General Education/Liberal Arts and Nursing).
 - 2) Professional (includes only nursing courses). It should be noted that admission to a master's program usually requires a 3.0 GPA in the major at the baccalaureate level.
- d. Students must achieve a "C" (2.00) or better in each nursing course. A student may not continue in subsequent courses for which the failed course is prerequisite until a minimum of "C" has been achieved.
- e. A student receiving an "F" grade in either the theory or the clinical portion of any nursing course will fail the course.
- f. Students may repeat a nursing course, as space is available, only once to raise the grade to "C" or above,
- g. Students will automatically and permanently be ineligible to continue in the nursing program if:
 - 1) Two F's are earned in the same nursing course.
 - 2) Any nursing course is taken three times, withdrawal or failure or combination of both, without earning a "C" or better.
 - 3) There is failure of two nursing courses, excluding NURS [1302](#), NURS [2310](#) and NURS [4290](#).
- h. Students may receive an "I" (incomplete) in a course, in keeping with TAMIU policy. The student and course faculty will contract for completion of course requirements.

- i. Students who are unable to maintain active continuous enrollment at TAMIU School of Nursing must apply for a Leave of Absence from the School in order to remain in good standing. Such students will be permitted to re-enter the School of Nursing on a space available basis and will be given priority for available space.

8. ACADEMIC PROBATION

Probationary status is a warning to a student to improve his/her academic performance in order to remain in the program.

- a. A student is placed on probation if she/he does not maintain a minimum cumulative grade point average of 2.00. The final grade report will carry official notice of academic probation.
- b. A student is placed on probation if she/he does not maintain a minimum grade point average of 2.00 in nursing courses. The School of Nursing notifies the student of professional probation.
- c. A GPA must be returned to minimum of 2.00 to remove probationary status. Students will have 30 semester credit hours in which to remove probationary status.
- d. Restriction: Students on probation are not eligible to represent the School of Nursing in any student activity/committees.
- e. Students who fail to attain a 2.00 cumulative grade point average for two full-time consecutive semesters will be suspended from the School of Nursing.
- f. Students suspended from clinical studies because of a low grade point average may return after a semester on a space available basis and take prescribed courses to raise their grade point average. Students unable to raise their grade point average to 2.00 within one semester after returning from suspension will be dismissed from the School of Nursing.
- g. Students may also be dismissed from clinical studies for any of the following reasons:
 - 1) Academic misconduct such as any act of dishonesty involving academic work.
 - 2) Unsafe clinical practice.
 - 3) Falsification of credentials.
 - 4) Conduct unbecoming to a student as described in the University Student Conduct Code.
- h. Academic suspensions and dismissals are nonreversible. However, a student may appeal the course grade which resulted in suspension or dismissal within one semester of the award of the grade. (See grievance procedure.)

9. RE-ADMISSION TO THE SCHOOL OF NURSING

Students not enrolled in Clinical Nursing Courses for two consecutive semesters or formally dismissed will be placed on inactive status. Applicants for re-admission to the School of Nursing must be eligible for re-admission to the University. Decisions will be made by the School of Nursing Admissions Committee. The deadlines for regular admission apply to students seeking re-admission. However, admission will be on a space available basis. Re-admission application materials are available from the Office of the Dean of the College of Nursing and Health Sciences.

10. STUDENT PROFESSIONAL DRESS AND APPEARANCE POLICY

All students will dress uniformly for the Canseco School of Nursing clinical rotations. These Canseco SON guidelines are as follows:

- a. Professional attire: Neat, clean, white, nurse's uniform of appropriate size is to be worn. Dresses should not be shorter than the midpoint of the knee. White slacks should come to the top of the shoes. White socks and hosiery are required. All undergarments must

be solid white.

- 1) Uniform style selected by the school of nursing: Style Landau (Female #8265 top) (Men #1140/8550). Al and Rob 724-4245 is one location in Laredo. Uniform tops must have the school logo embroidered at Lozano's 1603 Calle Del Norte 726-1035.
 - 2) Additionally, you will need a school polo shirt solid maroon (from bookstore or student nurses association) and black hemmed slacks when selecting client assignments before clinical and all out of hospital assignments. No jeans are allowed.
- b. Hair: Hair must be tied up and back from the face. Buns, braids and secure ponytails that do not touch the collar or fall toward the face are acceptable. Plain barrettes are accepted. No ribbons or flowers are permitted. Beards and mustaches must be neatly trimmed. Bangs must be pinned back at all times.
 - c. Fingernails: Nails must be clean, trimmed, and moderate length so as not to injure clients. Nail polish and artificial nails are prohibited.
 - d. Shoes: Clean, white nursing shoes or all white leather tennis shoes must be worn. No clogs, open heel or open toe shoes are allowed. Shoelaces must be clean and white. Black shoes are to be used with black slacks, refer to 10a. Low heeled shoes are necessary (you should be able to move quickly in them).
 - e. Jewelry: No jewelry except a plain band should be worn during client contact. Necklaces, bracelets and rings with stones must not be worn. One pair of small studded earrings may be worn if ears are pierced. A watch with a second hand must be worn.
 - f. Student ID: TAMIU student ID is required and **MUST BE WORN AT ALL TIMES IN THE CLINICAL AREA**, during class time, and during Canseco Hall computer lab use. The student ID can be purchased at the TAMIU Student Center, Room 128.
 - g. Personal/Cosmetics: Be generous with antiperspirant/deodorant but avoid perfume, aftershave or cologne because this frequently provokes allergic reactions.
 - h. Accessories:
 - 1) Bandage scissors, penlight, 6 inch hemostat (Kelly forceps), pen light, pen with black ink, pill cutter, pill crusher and a stethoscope (bell and diaphragm - Lippi-Lite) is standard equipment and should be taken to the clinical area each time. (Pocket protector)
 - 2) Bring only items necessary to the clinical setting (paper, pen, guidelines, etc.). Leave purses, and all valuables or bulky items safely at home. No sun-glasses or base ball caps or head gear will be permitted.
 - 3) Cell phones are not permitted in clinical settings.
 - 4) Gum: No gum chewing is allowed during clinical.
 - i. Tattoo/skin piercing: All tattoos, skin piercings and ear gauges **MUST** be removed. Other visible piercings, including tongue studs will not be permitted.
 - j. Tobacco Use: No tobacco products are to be used immediately before or during clinical times. The smell of smoke lingers in hair and clothing which can cause breathing problems for clients and colleagues.
 - k. **The lead or clinical instructor reserves the right to dismiss any student who is not compliant with the dress code and that individual will receive an "F" for the day.**

K. GRADUATION REQUIREMENTS

The School of Nursing adheres to all general requirements and procedures of the university for graduation. For deadlines and requirements, see TAMIU catalog. In their final year, students need to verify with their advisors that all requirements for graduation and/or honors have been met. In addition, students are eligible to apply for graduation when the following conditions are met:

- a. completion of required semester credit hours
- b. a cumulative GPA of 2.00
- c. completion of all clinical studies coursework

1. ELIGIBILITY FOR GRADUATION IN BASIC NURSING

Satisfactory performance on diagnostic examinations designated by the School of Nursing to validate potential successful performance on the National Council Licensure Examination is required for basic students to be eligible for graduation.

- a. All students in the final semester of the clinical nursing program will enroll in NURS [4290](#): Senior Lab Seminar.
- b. At the beginning of the final semester, students will be administered a diagnostic examination by the School of Nursing.
- c. Upon receipt of the resulting diagnostic profile, each student will be counseled by the faculty advisor to identify areas of strength and weaknesses. The student and faculty will develop a contract for an individualized plan to assist in meeting the student's needs.
- d. A comprehensive examination will be administered during the final semester. To be eligible to write the comprehensive examination, the student must provide evidence that the terms of the contract have been met.
- e. Students who fail to demonstrate satisfactory performance on the comprehensive examination will not be eligible for graduation.
- f. A student who does not achieve satisfactory performance on the comprehensive examination will be required to re-enroll in NURS [4290](#): Senior Seminar and retake the exit examination at the end of the course. If satisfactory performance is not achieved on the second attempt at the course NURS [4290](#), the student will not be eligible for a degree.

VIII. MSN CURRICULUM

A. MSN DEGREE REQUIREMENTS

B. MSN COURSE DESCRIPTIONS

C. CURRICULUM

D. SEQUENCE OF COURSES

E. CREDIT FOR PRIOR LEARNING

F. CLINICAL FACILITIES

A. MSN DEGREE REQUIREMENTS

Hours Required: A minimum of 30 Semester Credit Hours (SCH). The Family Nurse Practitioner Major also requires 675 clinical practice hours.

NURSING (NURS)

The MSN Core Courses are:

NURS [5301](#) Theoretical Foundations of Nursing Practice

NURS [5302](#) Research Methods/Designs in Nursing

NURS [5304](#) Advanced Practice Role

NURS [5310](#) Diversity and Social Issues in Health Care

The Advanced Practice Foundation Courses are:

NURS [5406](#) Advanced Health Assessment

NURS [5305](#) Advanced Pharmacotherapeutics

NURS [5303](#) Advanced Pathophysiology

The FNP Clinical Practicum courses are:

NURS [5211](#) Diagnostic Lab Applications

NURS [5407](#) FNP I : Wellness and Health Promotion

NURS [5608](#) FNP II: Management of Acute and Chronic Illness Part I

NURS [5509](#) FNP III: Management of Acute and Chronic Illness Part II

NURS [5612](#) FNP IV: Integrated Clinical Practice

B. MSN COURSE DESCRIPTIONS

NURS 5301: Theoretical Foundations of Nursing Practice

Three semester hours, theory only.

The focus of this course is on the exploration of selected theories and conceptual frameworks, and their relationship to nursing practice and research. Emphasis is on the utilization of theories and models in nursing as a basis for a practice to provide a caring, comprehensive, and holistic approach to health care within a multicultural society.

NURS 5302: Research Methods/Designs in Nursing

Three semester hours, theory only.

This course focuses on the study of a variety of designs and methods of the research process to prepare students to be proficient in the evaluation and utilization of research within the clinical practice setting. Students will have the opportunity to critically examine reported research to determine the utilization of scientific knowledge in order to provide high quality nursing health care, initiate change, and improve patient outcomes. Legal and ethical issues related to research in health care are explored and discussed. The interrelationships of theory, research and practice that serve as the basis for clinical and organization decision-making are analyzed.

NURS 5303: Advanced Pathophysiology

Three semester hours, theory only.

This course is a comprehensive study of underlying concepts common to the major pathophysiologic processes of the body. The focus of this course is on the interaction of age, life style, culture, gender differences, and intrinsic and extrinsic environmental factors on the dynamic aspects of physiologic mechanisms altered by disease in the human organism. Emphasis is on the pathophysiological concepts essential for understanding the rationale for preventive and therapeutic treatment/intervention.

NURS 5304: Advanced Practice Role

Three semester hours, theory only.

This course explores the advanced practice roles of teacher, change agent, researcher, advocate, clinician, consultant, collaborator, and manager of systems. The historical development and acceptance of the nurse practitioner and other advanced practice roles are traced through nursing practice acts, requirements imposed by state nursing boards, national certification efforts, third party payment systems, and various professional organizations. Selected issues such as the scope of practice, political, economic, and legislative influences are analyzed.

NURS 5305: Advanced Pharmacotherapeutics

Three semester hours, theory only.

This course covers the essentials of clinical pharmacological therapeutics for advanced practice nursing. Drugs of choice and alternatives for selected disease management, illness prevention and health maintenance will be discussed based on patient/client's age, life style, culture, expected outcomes, protocol utilization, cost and other health conditions.

NURS 5406: Advanced Health Assessment

Four semester hours, two theory, six clinical.

This course explores the method of collecting a comprehensive data base, including complete functional assessment, health history, and physical examination for patients/clients of all ages and in all phases of individual and family life style. Students will learn key symptom-focused physical exams. Communication of findings maintaining privacy and terseness and meeting legal standards of documentation are emphasized. Students will begin formulating differential diagnoses after interpreting the collected data. The clinical portion offers the opportunity to perform and interpret assessments on patients. Course fee: \$25.00.

NURS 5407: FNP I: Wellness and Health Promotion

Four semester hours, two theory, six clinical.

This course is designed to develop theoretical and clinical competencies of the FNP in health promotion of individuals and families in diverse populations in a variety of settings. The focus of the course is on concepts and skills of health promotion, disease prevention, and health maintenance. The emphasis is on: 1) developing advanced practice skills in comprehensive assessment and management strategies that reflect current nursing and medical knowledge to improve patient/client outcomes; and 2) evidence-based research and theory in the promotion of health and prevention of disease across the life span, in the context of healthy communities. Prerequisites: NURS [5303](#), NURS [5305](#), NURS [5406](#).

NURS 5608: FNP II: Management of Acute and Chronic Illness, Part I

Six semester hours, three theory, nine clinical.

This course focuses on clinical management of commonly occurring acute and chronic conditions in primary care settings. Content includes symptom complexes, pathophysiology, epidemiology, clinical management, and prevention of complications. Emphasis is on symptom analysis, diagnostic reasoning, differential diagnosis, prescription and documentation of therapeutic regimens. Attention is given to research-based pharmacological and non-pharmacological treatments and integration of nursing, developmental, family and transcultural theories to the diagnostic and management process. The clinical practice provides the opportunity for the student to perform comprehensive and episodic assessments, practice advanced skills in health assessments, diagnose commonly occurring illnesses, and suggest treatments and referrals under supervision. Prerequisite: NURS [5407](#).

NURS 5509: FNP III: Management of Acute and Chronic Illness, Part II

Five semester hours, three theory and two clinical (six hours).

This course builds on the advanced knowledge and skills acquired in FNP I and II. The focus is on developing advanced practice skills in the management of individuals with acute and chronic disorders of selected body systems. Emphasis is on addressing care of unstable and complex health care problems through synthesis and prioritization of historical and immediately derived data. Students critically evaluate clinical guidelines for prevention as well as treatment, and participate in the delivery of care to individuals and families from varying cultures with an emphasis on the financial aspects of primary care. Prerequisite: NURS [5407](#).

NURS 5310: Diversity and Social Issues in Health Care (3 semester hours; theory only)

Three semester hours, theory only. This course focuses on global awareness that is necessary to provide culturally sensitive care. The inclusion of this content helps students to develop an understanding and appreciation of human diversity in health and illness and to assure the delivery of appropriate or individualized health care. Students evaluate and appropriately address social issues that affect health outcomes. Prerequisite: NURS [5302](#).

NURS 5211: Diagnostic Laboratory

Two semester hours, one theory, one clinical.

This two credit hour clinical course is composed of theory, diagnostic procedures, invasive treatments and protocols designed for the advanced practice nurse. The students will acquire both noninvasive skills and invasive skills in the clinical management of acute and chronically ill clients. Student progress will be evaluated through examinations, papers, class participation, seminars and clinical practice. Course fee: \$25.00.

NURS 5612: FNP IV: Integrated Clinical Practicum

Six semester hours, one theory, 15 clinical.

This capstone course builds on advanced knowledge and concepts from FNP I, II, III and the practicum for each course. The emphasis is on continued study of assessment and clinical management of selected health problems frequently seen in primary health care. The clinical portion provides for the development of clinical competence as the student integrates previously acquired knowledge into the enactment of the multiple roles of the nurse practitioner, and allows for a greater degree of interdependent practice based on the student's abilities and progress. The student works with one or more preceptors in multicultural urban and rural communities. Prerequisites: NURS [5608](#), NURS [5509](#). Course fee: \$425.00.

Texas A&M International University
 Canseco School of Nursing
 C. Curriculum Master of Science in Nursing, FNP Major
 2009-2010

BSN Completed

FALL		SPRING		SUMMER	
Semester 1		Semester 2		Semester 3	
NURS 5301	3	NURS 5303	3	NURS 5305	3
NURS 5302	3	NURS 5406	4	NURS 5304	3
Total	6	Total	7	Total	6
Semester 4		Semester 5		Semester 6	
NURS 5407	4	NURS 5608	6	NURS 5509	5
NURS 5310	3	NURS 5211	2		
Total	7	Total	8	Total	5
Semester 7					
NURS 5612	6				
Total	6				
Total Hours (SCH: Clinical)	(30:675)				

D. SEQUENCE OF COURSES

1. MASTER OF SCIENCE IN NURSING, FNP MAJOR

Following is the suggested degree plan for students who have no prior graduate work in nursing. Students see their advisor each semester for enrollment in classes for the next semester. Students are responsible for reviewing the [Program of Study Requirements](#) and the requirements of the Dr. F. M. Canseco School of Nursing.

FALL	HOURS	SPRING	HOURS
YEAR 1 SEMESTER 1		YEAR 1 SEMESTER 2	
NURS 5301	3	NURS 5303	3
Theory		Adv. Pathophysiology	
NURS 5302	3	NURS 5406	4
Research		Adv. Health Assessment	
Total	6	Total	7
		SUMMER	
		YEAR 1 SEMESTER 3	
		NURS 5304	3
		Adv. Practice Role	
		NURS 5305	3
		Adv. Pharmacotherapeutics	
		Total	6
FALL		SPRING	
YEAR 2 SEMESTER 1		YEAR 2 SEMESTER 2	
NURS 5407	4	NURS 5608	6
FNP I		FNP II	
NURS 5310	3	NURS 5211	2
Diversity		Diagnostic Lab	
Total	7	Total	8
		SUMMER	
		YEAR 2 SEMESTER 3	
		NURS 5509	5
		FNP III	
		Total	5
FALL		YEAR 3 SEMESTER 1	
NURS 5612	6		
FNP IV			
Total	6		

TOTAL SEMESTER CREDIT HOURS: CLINICAL (45:675)

Actual degree plans may vary depending on availability of courses. Some courses may require prerequisites not listed.

DIDACTIC AND CLINICAL HOURS

The formula for calculating semester credit hours (SCH) for didactic content is one SCH for every hour of class time each week. Thus a 3 SCH theory course will meet 3 hours each week and 45 hours total in a 15 week semester.

The formula for calculating clock hours of clinical practice is three hours per SCH. Thus one semester hour of credit (SCH) for clinical equals 3 clock hours per week and 45 hours per 15 week semester. In the summer the shorter 10 week semester results in an increased number of hours each week. Students are given a 10 minute recess for each hour.

There are 30 SCH of didactic instruction and 15 SCH (675 clock hours of clinical practice) in the FNP curriculum.

E. CREDIT FOR PRIOR LEARNING (FROM UNIVERSITY CATALOG)

In keeping with University policy, six (6) hours of graduate level study with a minimum grade of 3.0(B) on a 4.0 scale may be transferred, with the consent of the MSN Coordinator and the Dean, from other accredited institutions of higher education. The graduate Admission and Progression Committee will evaluate courses for consistency with TAMIU curriculum.

F. CLINICAL FACILITIES

Clinical facilities where TAMIU BSN and MSN Nursing students meet the clinical practice requirements of their curricula are listed elsewhere in this Handbook.

In addition, the SON has developed partnerships with community organizations and individuals to work directly with a number of underserved communities in Laredo, Webb County, Jim Hogg County, and Zapata County, including inner city neighborhoods, rural towns, *Colonias*, and unincorporated rural population centers. Several times a year, a loosely organized group of providers and organizations provide health services in one or the other of the underserved or inaccessible communities.

Students and faculty in the Community Health Nursing course have linkages with more than nine different communities in Laredo and the surrounding rural areas. As a result of their detailed community assessments, it is clear that a top priority for residents in these communities (some as far as 50 miles from Laredo) is access to appropriate health care services and educational opportunities. One aim of the SON and the MSN FNP program in particular is to establish a nurse-managed clinic in one or more of these outlying, rural and underserved areas. A grant proposal was submitted to HRSA in December 2003 to support such a clinic. The proposal was approved but not funded in this cycle.

Preceptors and Sites Used by Family Nurse Practitioner Students

Preceptors appropriate for use in all clinical experiences include: Family physicians, family nurse practitioners in primary care and internists providing primary care. Pediatricians, family nurse practitioners working with pediatricians and nurse practitioners/nurse midwives working in women's health care would be appropriate preceptors beyond NURS 5406 Advanced Health Assessment. Before that time it would be too specialized for the beginner. There would not be a broad enough experience for Advanced Health Assessment. The bulk of the clinical experience will be with adults. Generally if students have a minimum of 75 hours with pediatric patients and 75

hours with women's health including working with pregnant women over NURS 5608 Management of Acute and Chronic Illness, Part I; NURS 5509 Management of Acute and Chronic Illness, Part II; NURS 5612 Integrated Clinical Practice, that will be enough exposure to apply the theoretical content to prepare for the certification exam.

In the first clinical course, NURS 5406 Advanced Health Assessment, the student tries to become comfortable working with the preceptor while assessing patients and presenting findings to the preceptor. Clinical faculty discuss strategies to present themselves to the preceptor to reassure them they won't slow them down. Clinical evaluation focuses on the taped history and physical to note what techniques need correcting.

By the second course NURS 5407 Wellness and Health Promotion the student reviews risk factors with patients and suggests primary and secondary preventive strategies. At this time, the clinical faculty makes two site visits and is present in the room while the student interacts with the patient. The faculty member may also ask the patient a few questions to demonstrate useful historical techniques to the student. The faculty is present while the student presents findings and teaching done with the preceptor. Student performance and the interaction between preceptor and student show the faculty whether this is a good site for the student by judging whether the student is thriving and trusted or not. Does the preceptor offer clinical pearls to the student? It helps to match challenging preceptors with students who don't mind the stress.

In general in the beginning courses, students should stay with one preceptor to get an idea of that preceptor's style. Then when the student has gained confidence they can tolerate using more than one preceptor in a course.

IX. MSN PROCEDURES AND POLICIES

A. ADMISSION REQUIREMENTS

1. Purpose
2. Curriculum
3. General Requirements
4. Admission Requirements
5. Criminal Background and Substance Abuse

B. PROGRESSION

1. Progression, Retention, Suspension
2. Grading Policies
3. Examination Policy and Guidelines
4. Grievance
5. Add, Drop, Withdraw and Incomplete
6. Probation/Dismissal/Readmission
7. Graduation Requirements
8. Repetition of a Course
9. Academic Requirements for Graduate Work
10. Academic Probation and Suspension

A. ADMISSION REQUIREMENTS

1. PURPOSE

The purpose of the Master of Science in Nursing degree program in the Canseco School of Nursing of the College of Nursing and Health Sciences is to produce culturally competent nursing leaders who are prepared with role specialization as a Family Nurse Practitioner (FNP). The curriculum is designed to prepare nurses for an increasingly active role in evidence based practice to improve patient/client care outcomes by translating research into practice. Graduates of the program will be eligible to take national certification examinations in their specialty.

2. CURRICULUM

The curriculum includes coursework required by the Texas Board of Nurse Examiners (BNE) to be qualified as an Advanced Practice Nurse (APN). The Texas Board of Nurse Examiners (BNE) defines APNs as:

"registered nurses who hold authorization from the board to practice as advanced practice nurses based on completing an advanced educational program acceptable to the Board. The term includes a nurse practitioner, nurse-midwife, nurse anesthetist, and a clinical nurse specialist. The advanced practice nurse is prepared to practice in an expanded role to provide health care to individuals, families, and/or groups in a variety of settings including but not limited to homes, hospitals, institutions, offices, industry, schools, community agencies, public and private clinics, and private practice. The advanced practice nurse acts independently and/or in collaboration with other health care professionals in the delivery of health care services." (<http://www.bne.state.tx.us/default.htm>)

3. GENERAL REQUIREMENTS

See Academic Regulations-Graduate Degrees for Specific TAMIU regulations.

- A. Admission: To be admitted to the School of Nursing, applicants must submit an application to the Office of Graduate Studies. A complete application includes:
 1. A valid RN license without restrictions in the State of Texas.
 2. A minimum of one year of work experience as a Registered Nurse.
 3. A baccalaureate nursing degree from a nationally discipline accredited college or university.
 4. Successful completion of an undergraduate statistics course.
 5. A minimum grade point average of 3.0 or better (on a 4.0 scale) for all college work and a 3.0 in all upper division courses.
 6. A personal interview with a faculty member.
 7. Three academic and professional references indicating achievement and motivation for graduate study. At least one reference should be from a faculty member who taught in the applicant's baccalaureate degree.
 8. Special conditions:
 - a. Degree-seeking students who are Registered Nurses with baccalaureate degrees in disciplines other than nursing and who meet all other requirements for admission into the MSN degree program are required to enroll in 27 hours of undergraduate nursing coursework, designated as follows: NURS [3314](#), NURS [3315](#), NURS [4375](#), NURS [4440](#), NURS [4470](#), NURS [4463](#) and NURS [4622](#).

- b. Graduates of baccalaureate level foreign nursing schools may be eligible to enroll in collaborative MSN degree programs between TAMIU and collaborating schools of nursing in Mexico and Latin America.
- B. In addition, the following must be submitted separately to the Dean of the College of Nursing and Health Sciences:
 - 1. Immunizations: DT (Diphtheria/Tetanus), Measles, Mumps, Rubella, Hepatitis B vaccine or informed refusal, TB Skin Test, Varicella.
 - 2. Verification of drug and criminal background screening by a designated company or agency at student expense.
- C. Provisional Admission Requirements: If the requirements for full admission are not met, provisional admission may be available. The Admissions Committee of the School of Nursing will review any application for provisional admission.
- D. Special Student Enrollment: Based on certain circumstances, it may be appropriate for an individual to enroll for coursework in Master of Science in Nursing courses as a special non-degree seeking student. Enrollment would be limited to selected courses and would not grant the student admission to the degree program.
- E. Leave of Absence: Under unusual circumstances, a student may petition for a leave of absence. The student's Advisory Committee Chairperson and the Chair of the Department must approve the petition. If the petition is granted, the registration requirement will be set aside during the period of the leave and will not count towards the requirement that the student complete a master's degree within a period of five years or within the time specified for the particular program. Leaves will be granted only under conditions that require the suspension of all activities associated with the thesis.

4. ADMISSION REQUIREMENTS

See Academic Regulations: Graduate Degrees for Specific TAMIU regulations.

To be admitted to the School of Nursing, applicants must submit an application for Graduate Studies to the Office of Graduate Studies and Research. A complete application includes:

- A. A valid RN license without restrictions in the State of Texas
- B. A minimum of one year of work experience as a Registered Nurse
- C. A baccalaureate nursing degree from a nationally discipline accredited college or university
- D. Successful completion of an undergraduate statistics course
- E. A minimum grade point average of 3.0 or better (on a 4.0 scale) for all college work and a 3.0 in all upper division courses
- F. A personal interview with a faculty member
- G. Three academic and professional references indicating achievement and motivation for graduate study. At least one reference should be from a faculty member who taught in the applicant's baccalaureate degree.
- H. Special conditions:
 - 1. Degree seeking students who are Registered Nurses with baccalaureate degrees in disciplines other than nursing and who meet all other requirements for admission into the MSN degree program are required to enroll in 27 hours of undergraduate nursing coursework, designated as follows: NURS 3314, NURS 3315, NURS 4375, NURS 4440, NURS 4470, NURS 4463 and NURS 4622.

2. Graduates of baccalaureate level foreign nursing schools may be eligible to enroll in collaborative MSN degree programs between TAMIU and collaborating schools of nursing in Mexico and Latin America.
- I. Criminal and Drug Screening Waiver Agreement read, signed and notarized.

5. **CRIMINAL BACKGROUND AND SUBSTANCE ABUSE POLICY AND PROCEDURE FOR APPLICANTS/STUDENTS LICENSED AS REGISTERED NURSES**

Policy:

Texas A&M International University (TAMIU), College of Nursing and Health Sciences (CNHS) and Canseco School of Nursing (SON) adheres to the policies of all clinical facilities with which the SON is affiliated for student clinical learning experiences. Many clinical facilities and school districts require criminal background and drug screening.

Purpose:

- A. Clinical agencies used by the CNHS and SON stipulate in clinical affiliation agreements that criminal background and drug screening be performed before students are permitted into the clinical facilities. This screening requirement is the same as that required of employees of public and private clinical agencies. This policy governs the drug and criminal background screening for nursing students.
- B. The rationale for this requirement for clinical students is based on the concept of due diligence and competency assessment of all individuals whose assignments bring them in contact with patients and employees.
- C. This approach ensures uniform compliance with Joint Commission standards pertaining to human resource management.
- D. Successful completion of criminal background and drug screening does not guarantee employment after graduation. Full acceptance into the nursing program is contingent upon satisfactory results. Students will be notified by letter of the procedure to follow for the screenings.
- E. Admission acceptance and continued enrollment in the school of nursing will be withdrawn for any student with a positive drug (refers only to drugs that do not address a documented health related purpose) or criminal background screening and for those refusing to have screening done.

Timing:

- A. All drug and criminal background screening will be conducted as a condition of consideration for and full acceptance into the SON. Verification must be received from the designated company (ies) and/or agency (ies) prior to being fully admitted into the nursing program.
- B. The results will be accepted for the duration of the student's enrollment in the nursing program if the student has had no change in background status while enrolled unless there is a change in the clinical facility requirements or if the participating student has had a break in the nursing program.
- C. A break in enrollment is defined as nonattendance of one full semester or more. The CNHS/SON does reserve the right to request random drug or background screenings at any time with the student responsible for all costs.
- D. The CNHS and SON will designate the company (ies) and/or agency (ies) selected to do

the drug and criminal background screening and will not accept results from any other company or agency. The student is responsible for the cost of the criminal background check and drug screening at the time of screening. The cost is non-refundable.

Procedure for Criminal Background Check and Drug Screen:

1. Go to www.tamiubackgroundcheck.com.
2. On the Texas A&M International University Students Background Check Home Page, READ the instructions giving information you need to have ready to complete the process. This includes a residential history with correct zip codes.
3. Now you are ready to begin your order. See: **“Click Here to Order”** (it’s in maroon), and click your mouse on it.
4. Select the **BASIC BACKGROUND CHECK PACKAGE**.
5. Follow the application steps. During the process you may elect to receive a copy of your background check. You will be asked to electronically sign a disclosure and Release form during the ordering process. Before completing the application be sure to include the method of **PAYMENT** (select Credit Card or Money Order).
6. When you receive confirmation of payment from American Data Bank, forward the email to Yolanda Cantu, Staff Assistant at ycantu@tamiu.edu or you can bring a copy to Canseco Hall 312 and request the Chain of Custody Form for the drug screen. Please call (956) 326-3110 ahead of time to ensure someone will be in the office to attend to you. **YOU MUST PICK UP THE CHAIN OF CUSTODY FORM IN PERSON.**
7. When you receive the Chain of Custody Form for the Drug Screen, you must make an appointment for the Drug Screen with:

Laredo Examiners, Inc.
802 E. Saunders Street, Suite B
Laredo, TX 78041
(Corner of Saunders & Logan), 956-791-6992

Please bring the Chain of Custody Form that was provided to you by the University and your phot ID. The report of your Criminal Background Check and drug screen results will be sent to the Dean of the College of Nursing and Health Sciences. The Dean will notify the School of Nursing if you have passed the Criminal Background Check and drug screen or if you hold another status.

School of Nursing and Clinical Agency Duty to Report to the Board of Nurse Examiners

The following excerpts are from The [State of Texas Nursing Practice Act](#), [Nursing Peer Review](#) and [Nurse Licensure Compact](#). For entire document and/or section requirements please see: <http://www.bon.state.tx.us/nursinglaw/npacontents.html>.

Except as provided by Subsection (b) the following are grounds for reporting a nurse under Section [301.402](#), [301.403](#), [301.405](#), or [301.407](#).

Sec. 301.401 Definitions

In this subchapter:

- (1) “Conduct subject to reporting” means conduct by a nurse that:
 - (A) violates this chapter or a board rule and contributed to the death or serious injury of a patient;
 - (B) causes a person to suspect that the nurse’s practice is impaired by chemical dependency or drug or alcohol abuse;
 - (C) constitutes abuse, exploitation, fraud, or a violation of professional boundaries; or
 - (D) indicates that the nurse lacks knowledge, skill, judgment, or conscientiousness to such an extent that the nurse’s continued practice of nursing could reasonably be expected to pose a risk of harm to a patient or another person, regardless of whether the conduct consists of a single incident or a pattern of behavior.

- (2) “Minor incident” means conduct by a nurse that does not indicate that the nurse’s continued practice poses a risk of harm to a patient or another person.

Section 301.402 Mandatory Report by Nurse (see actual section for entire reporting requirements)

- (a) In this section:
 - (3) “Nursing educational program” means a board approved educational program leading to initial licensure as a registered nurse or vocational nurse
 - (4) “Nursing student” means an individual who is enrolled in a professional nursing or vocational nursing education program.

- (b) A nurse shall report to the board in the manner prescribed under Subsection (d) if the nurse has reasonable cause to suspect that:
 - (3) another nurse is subject to a ground for reporting under Section 301.401; or
 - (4) the ability of a nursing student to perform the services of the nursing profession would be, or would reasonable be expected to be, impaired by chemical dependency

Sec. 301.403 Duty of Peer Review Committee to Report

A nursing peer review committee operating under Chapter 303 that determines that a nurse has engaged in conduct subject to reporting shall file with the Board a written, signed report. (See actual section for full reporting requirements)

Sec. 301.404 Duty of Nursing Educational Program to Report

- (a) In this section, “nursing educational program” and “nursing student” have the meanings assigned by Section 301.402(a)
- (b) A nursing educational program that has reasonable cause to suspect that the ability of a

nursing student to perform the services of the nursing profession would be, or would reasonably be expected to be, impaired by chemical dependency shall file with the Board a written, signed report that includes the identity of the student and any additional information the Board requires.

Compliance and Record Keeping

The designated agency/company will notify the TAMIU Dean of CNHS of any individual who fails drug screening . All records will be kept separate and confidential.

The SON will send verification on adherence to the policy to the clinical affiliate prior to the clinical rotation start date. Verification is accomplished by sending a letter from the SON on letterhead stating that these standards have been met by the student, listing the student's full name and clinical rotation start date. If more than one student is attending a clinical rotation, a comprehensive list with all of the student's names may be submitted.

[TEXAS PEER ASSISTANCE PROGRAM FOR NURSES \(TPAPN\)](#)

The purpose of TPAPN is to identify and assist Licensed Vocational Nurses and Registered Nurses of Texas whose ability to provide nursing services has been impaired by chemical dependency or mental illness so that they can return to competent practice and be a useful member of the profession. Emphasis of the program is on education, advocacy, and opportunity as opposed to punitive action against the nurse. All aspects of the program are conducted with compassion, dignity, and confidentiality.

TPAPN helps provide referral, support, and monitoring services to nurses whose ability to practice nursing has been impaired by chemical dependency or mental illness. TPAPN also assists the employers of such nurses. For additional information, contact the office of the Director of the School of Nursing or call TPAPN at 1-800-288-5528.

B. PROGRESSION

1. PROGRESSION, RETENTION, SUSPENSION

- a. Students must repeat a course in which they earn an F and will be placed on academic probation if their GPA falls below 3.0.
- b. Academic probation status will be removed in accordance with University policy.
- c. Students earning a grade of F, W or I (Incomplete) may not progress to courses for which that course is a prerequisite.
- d. Students who earn a third C or below in the program cannot progress further and will be required to withdraw from the program.
- e. Administration and faculty reserve the right to dismiss students without previous warning for unsafe and/or unprofessional behavior. The conduct of nursing students should meet ethical standards as defined by the American Nurses Association (ANA) in Code for Nurses. Personal integrity is reflected in professional judgments. Consequently, the Canseco School of Nursing reserves the right to dismiss students from the program for unprofessional or unsafe behavior. (See [Canseco School of Nursing Student Handbook](#) for examples.)
- f. Reapplication may be considered after 12 consecutive months following withdrawal or dismissal. Readmission is competitive and based upon availability of space in the

program. Students must meet the standards for minimal performance and progression established by Texas A&M International University (See catalog section on [Academic Regulations - Graduate](#)).

2. GRADING POLICIES

The Graduate Program of Canseco School of Nursing has adopted a grading scale in line with other Texas Schools of Nursing.

A	90-100
B	81-89
C	75 -80
F	74 and below

Graduate nursing students must achieve a grade of B or better in order to remain in good academic standing. In addition, students must pass both clinical and theory components of a course in order to pass that course. In keeping with university policy, a student may receive no more than two Cs.

Clinical evaluation is covered in depth in the Preceptor Handbook. Both preceptors and faculty will evaluate student clinical performance. Clinical evaluation tools specify the behaviors that must be demonstrated to meet the clinical objectives of each course. Satisfactory clinical performance requires a score of 3 or better on all critical elements and a score of 2 or better on all other elements of grading.

3. EXAMINATION POLICY AND GUIDELINES

The following examination policy and guidelines are in addition to the policies in the current catalog.

1. All personal belongings are to be placed under the desk or in a designated area.
2. A #2 lead pencil and Scantron (if appropriate) will be required. Scratch paper will be provided.
3. Faculty will determine what additional aids may be used during the examination and/or quiz.
4. Exams and/or Quizzes will be proctored.
5. Students who need to leave the examination area will be required to leave the exam/quiz, Scantron, etc. with the proctor.
6. At the conclusion of the examination period, the examination booklet, Scantron, etc. will be collected by the proctor.
7. Students found obtaining information from sources other than what has been allowed by the proctor will be given a ZERO (0) for that Exam/Quiz.
8. Review of exams and/or quizzes will be announced and written in the syllabus.
9. Exam and/or Quiz item answers may be challenged in writing delineating rationale for challenge following the review of the Exam and/or Quiz.
10. Exam and/or Quiz challenges will be accepted on the day of exam or at exam review.
11. An Exam and/or Quiz challenge item determined to be accurate will be adjusted for that exam and/or Quiz.
12. Exams and/or Quiz grades may be posted by permission of student and at the discretion of the instructor.
13. Makeup exam/quizzes are not routinely given, and are at the discretion of the instructor.
14. No Exam grade will be dropped in determining the final grade.

15. Pop quizzes may be given at the discretion of the course instructor(s).
16. A ZERO (0) will be awarded to any student who is absent at the time a Quiz is administered.

4. GRIEVANCE

It is expected that faculty and students will fulfill their obligations to the instructional process. If, however, a complaint does arise, the parties should meet in an effort to resolve the matter. Students are encouraged to discuss problems using the following chain of communication for resolution, before resorting to the official appeals process.

1. Clinical instructor (where appropriate)
2. Course Manager
3. Advisor
4. Dean of the College of Nursing and Health Sciences

If the problem cannot be resolved by this procedure, the Dean should be contacted. If this contact fails to satisfy the complaint, the University's published grievance procedures should be followed. (See also [TAMIU's Student Handbook](#))

5. ADD, DROP, WITHDRAW, AND INCOMPLETE

The School of Nursing follows the general policies of Texas A&M International University as outlined in the catalog with respect to add, drop, withdraw and incomplete. In addition the following policies apply to Nursing Courses:

1. The faculty of the School of Nursing supports the idea that the use of an "I" or "W" to hide unsuccessful performance is inappropriate.
2. After the 10th week or 2/3 of class both the course faculty and the Dean must approve the withdrawal. Adds or drops must be signed by School of Nursing faculty.
3. All students must maintain a satisfactory 3.00 grade point average:
 - a. Students must achieve a grade point average of 3.00 or better in each nursing.
 - b. A student receiving an "F" grade in either the theory or the clinical portion of any nursing course will fail the course.
4. Under certain circumstances, students may receive an "I" (incomplete) in a course, in keeping with TAMIU policy. The student and course faculty will contract for completion of course requirements.
5. Students who are unable to maintain active continuous enrollment at TAMIU School of Nursing must apply for a Leave of Absence from the School in order to remain in good standing. Such students will be permitted to reenter the School of Nursing on a space available basis and will be given priority for available space.

6. PROBATION/ DISMISSAL/ READMISSION

Probationary status is a warning to a student to improve his/her academic performance in order to remain in the program.

1. A student is placed on probation if she/he does not maintain a minimum cumulative grade point average of 3.00. The final grade report will carry official notice of academic probation.
2. A GPA must be returned to minimum of 3.00 to remove probationary status.

3. Students who fail to attain a 3.00 cumulative grade point average for two fulltime consecutive semesters will be suspended from the School of Nursing.
4. Students may also be dismissed from graduate studies for any of the following reasons:
 - a. Academic misconduct such as any act of dishonesty involving academic work.
 - b. Unsafe clinical practice.
 - c. Falsification of credentials.
 - d. Conduct unbecoming to a student as described in the University Student Conduct Code.
5. Academic suspensions and dismissals are nonreversible. However, a student may appeal the course grade which resulted in suspension or dismissal within one semester of the award of the grade. (See grievance procedure)

7. GRADUATION REQUIREMENTS

The School of Nursing adheres to all general requirements and procedures of the University for Graduation. For deadlines and requirements, see TAMU online catalog.

8. REPETITION OF A COURSE

Repetition of a Course to Raise a Grade: A course in which the final grade is C may be repeated for a higher grade. A graduate student may retake a maximum of two courses during graduate study at the University. The student may repeat each course only one time. Only the final grade received for the course will be computer in the grade point average although the initial grade will remain on the transcript.

9. ACADEMIC REQUIREMENTS FOR GRADUATE WORK

Good Standing: Graduate students, including degree-seeking, certificate-seeking, and non-degree-seeking students, are considered in "good academic standing," making satisfactory academic progress, if they maintain a minimum 3.0 cumulative grade point average (GPA) on all graduate course work; and earn a 3.0 semester average on all course work.

Minimum grade requirement: Only grades of A, B, C, S (Satisfactory), and CR (Credit) are acceptable for graduate credit. Grades of F, U (Unsatisfactory) or NC (No credit) are not accepted for graduate credit. No more than two grades of C earned at this University will be accepted as credit for any nursing graduate program.

10. ACADEMIC PROBATION AND SUSPENSION

Placement on Academic Probation: A nursing graduate student will be placed on academic probation if, at the end of any semester or term, the student's cumulative grade point average falls below 3.0 and/or the student's semester grade point average is below 3.0. A nursing graduate student receiving a second C grade or lower will be placed on academic probation.

Removal from Academic Probation: A student must achieve a cumulative 3.0 GPA while in the graduate nursing program to be removed from academic probation if academic probation was due to unsatisfactory GPA. A student who receives two grades of C or less may be removed from academic probation if the student achieves a cumulative 3.0 GPA. A student will not be placed on academic probation in a graduating semester if the cumulative GPA is 3.0 or higher and there are no more than two C's for courses on the degree plan.

Placement on Academic Suspension: A student who is on academic probation will be placed on academic suspension if

- a. The student's grade point average for the subsequent semester falls below 3.0 or
- b. The student receives a third grade of C or lower.

Reinstatement: A student on academic suspension may not enroll in any graduate program for a minimum of 12 consecutive months. A student must reapply, meet current requirements for degree-seeking students, and be accepted by the University and the program to enroll for graduate studies following the period of academic suspension. The application may be submitted prior to the requested enrollment date.

Appendix A. Faculty /Staff Roster

Regina C. Aune, PhD, RN, CLNC, FAAN
Dean and Professor of Nursing
St. John College of Cleveland
University of California
University of Utah

Louise A. Autio, PhD, FNP, RN
Coordinator, Master's of Nursing
Associate Professor
Texas Woman's University
University of Illinois

Whitney R. Bischoff, DrPH, RN
Associate Professor
Univ. of Tx. HSC, Houston
Texas A&M University-Corpus Christi
University of Hawaii-Manoa

Carmen Bruni, MSN, RN, CS, CNA
Assistant Professor
Texas Woman's University
Incarnate Word College

Natalie Burkhalter, MSN, RN, CS, ACNP
Associate Professor
RN-BSN Transfer Advisor
Corpus Christi State University
Incarnate Word College
Midwestern State University

Linda Flores, MSN, RN, NCSN
Assistant Professor
Houston Baptist University
Texas A&M University-Corpus Christi

Vivian Garcia, MSN, RN, FNP
Clinical Assistant Professor
Regents College
Texas A&M University-Corpus Christi

Belva Gonzalez, PhD(c) MSN, RN, FNP-BC
Clinical Assistant Professor
Texas A&M University-Corpus Christi
Univ. of Wisconsin, Milwaukee

Loretta T. Gottschalk, DrPH, RN, FAAN
Visiting Professor
Case Western Reserve University
University of Missouri
Univ. of Tx. HSC School of Public Health

Rita Haber, RN, MSN, FNP-BC
Clinical Assistant Professor
Texas A&M International University

Irma Lara, MSN, RN, FNP
Clinical Assistant Professor
Texas A&M University-Corpus Christi
University Health Sciences Center, San Antonio

Maria De Jesus Mena, RN, MSN, FNP
Clinical Assistant Professor
Texas A&M University-Corpus Christi

Samuel G. Oliveros, BAAS, RN
Laboratory Supervisor
Laredo Junior College
Texas A&M International University

Horacio Palacios, MSN, RN
Clinical Assistant Professor
Texas Woman's University
Texas A&M University-Corpus Christi

Rose A. Saldivar, MSN, RN, FNP, FPMHNP
Clinical Assistant Professor
University of Texas Medical Branch Galveston
Texas A&M University-Corpus Christi
Univ. of Texas HSC, San Antonio

Marivic Torregosa, PhD(c) MSN, RN, FNP
Clinical Assistant Professor
University of Bohol, Philippines
Texas A&M University-Corpus Christi
University of Wisconsin, Milwaukee

Susan S. Walker, PhD, MS, RN
Professor Emeritus, Canseco School of Nursing
Carleton College
Boston University
University of Texas Medical Branch, Galveston

Indicates a member of Graduate Faculty

Appendix B

Abbreviations Used in this Document

BON	(Texas) Board of Nursing
BOR	Board of Regents
BSN/MSN	Bachelor's of Science in Nursing/Master's of Science in Nursing
NCLEX	National Council Licensure Examination
NLNAC	National League for Nursing Accrediting Commission
OSHA	Occupational Safety and Health Administration
TAMU	Texas A&M International University
THECB	Texas Higher Education Coordinating Board